

Info

1 Quarter turns

2 Rod controls

3 Locking systems

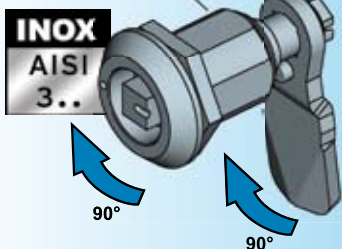
4 Hinges

5 Gasketing

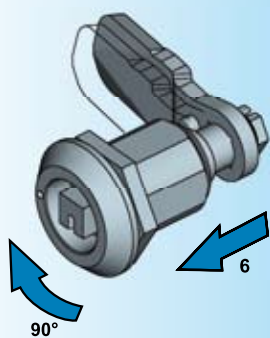
6 Handles

7 Aluminium windows

8 Stainless steel



Open condition
The first 90° of rotation of the insert also turns the cam 90°.



Closed position
The second 90° of rotation of the insert draws the cam toward the door 6 mm axially.



Compressed condition

Unlock:
Reversed rotation

Note:
Further inserts on request

Further parts see page
 – Accessories 1C-320
 – Escutcheon 3B-140
 – Key 12B-120



Vibration proof

The compression latch is of vibration-proof design. Depending on the installation location and operational conditions specific checks are necessary and/or supplementary measures of fastening required.

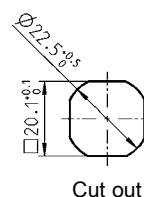
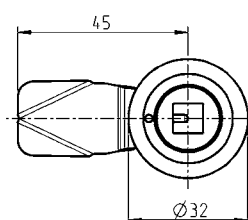
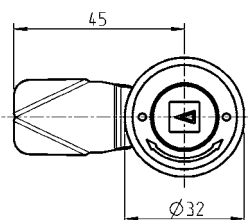
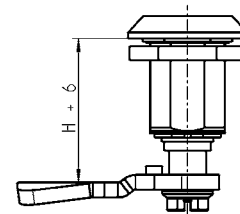
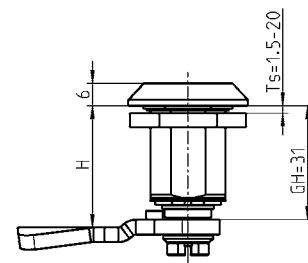
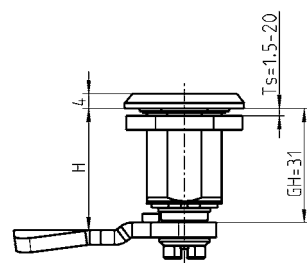


with arrow and red - green mark



with mark

Note:
The H-dimension will be reduced by 2 mm when used with finger pull (see page 1C-320)



| | |
|--|----------------|
| Compression latch with arrow and red - green mark AISI 316, with spring and flat seal | |
| Square 8 right-hand version | 1000-U834-REPH |
| Square 8 left-hand version | 1000-U834-LIPH |
| Compression latch AISI 316, with spring and gasket | |
| Square 8 with mark | 1000-U755-01 |
| Double bit 3 | 1000-U749-01 |
| Double bit 5 | 1000-U748-01 |
| Slot 2 x 4 | 1000-U777-01 |
| Cam AISI 304 | |
| H | GH = 31 |
| 19 | 1000-221 |
| 23 | 1000-223 |
| 27 | 1000-225 |
| 31 | 1000-227 |
| 33 | 1000-228 |
| 35 | 1000-179 |
| 37 | 1000-229 |
| 39 | 1000-230 |
| 41 | 1000-180 |