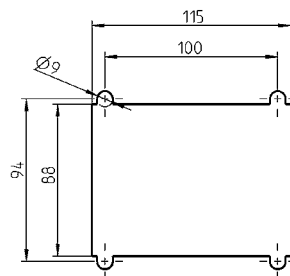
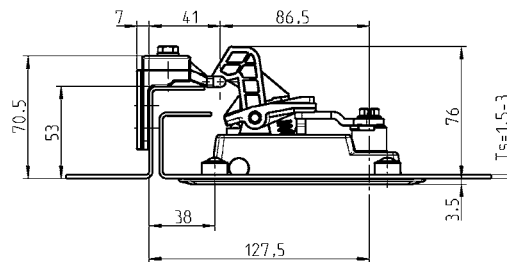
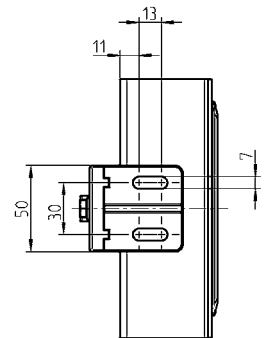
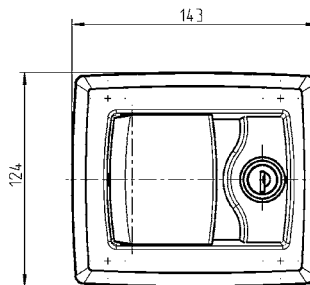


Note:
The Version 1130-U1 and -U2 are made for RH use by default.

Version for LH use is created by removal of the round cylinder rotating 180° and refitting.



Cut out



Function:
The spring-loaded locking hook is equipped with a "door-slam" effect. Thereby door can also be closed when locked.

Further parts see page
– Spare key 12B-140

Hinged pattern handle polyamide GF black, compensator and lock catch zinc die zinc pl., round cylinder zinc die with stainless steel cap and dust cap, springs stainless steel, cam and fastening material m.s. zinc pl., with seal
Each round cylinder has one silver steel key with polyamide grip GF black.

keyed EK 333

1130-U1

keyed different

1130-U2