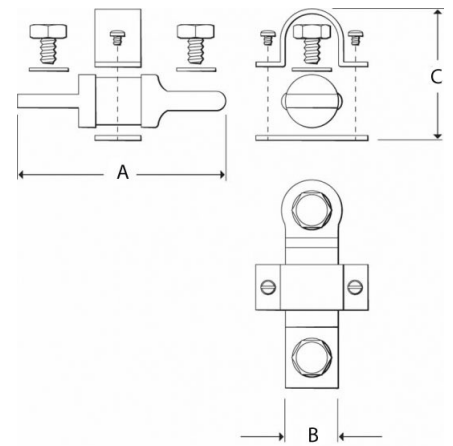
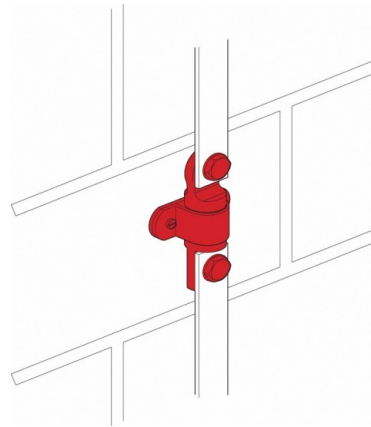


Bi Metallic Connectors



BIM253

BSS253



These connectors are used to join aluminium and copper tapes together. They are a neat and practical jointing method without the need for tinning, riveting or wrapping the joint.

Fix using countersunk woodscrew 1 1/2" x No. 10 wall plug.

Conductor Size (mm)	Material Type	A (mm)	B (mm)	C (mm)	Unit Weight kg	Pack Quantity	Part Number
25 x 3	Aluminium & Copper	98	29	25	0.20	10	BIM 253
	Stainless Steel	76	21	20	0.16		BSS 253