

# Small scale pilot range for high performance applications Büchi «miniPilot 5», «miniPilot 10» and «miniPilot 15»



- Büchi quality
- modular and compact
- safe and reliable
- ATEX-CE-cGMP
- «büchiflex» connections
- corrosion resistant
- easy handling
- turn-key
- extensive accessories

#### Applications /

- scale-up
- multi-component reactions
- API production
- low temperature reactions



BÜCHI – THE WAY TO GET RESULTS!

# Büchi «miniPilot 5», «miniPilot 10» and «miniPilot 15»

## Features

- - 1.0 to + 1.0 bar in vessel
- - 60°C (-90°C) to +200°C
- 0 – 600 rpm, viscosity 2500 cP
- ATEX Zone 1 (0) / CE / cGMP
- Dry running mechanical seal
- Highly corrosion resistant materials: Glass / PTFE/ PFA / PEEK
- Reactor lift for easy vessel cleaning and stirrer exchange
- Optional glass overhead
- Optional triple jacket (for cryogenic application)
- Easy exchangeable stirrer: anchor, impeller, or other
- Compact design
- CIP

## System Setup

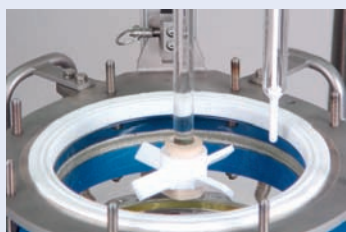
- 5, 10 or 15 liter glass reactor, interchangeable
- Distillation overhead (optional)
- 1" stainless frame fits in standard fume hood, with weels or feet
- Table top or mobile floor version

## Applications

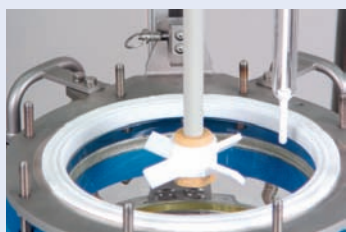
- Distillation
- Azeotropic distillation (phase separation) in glass overhead (optional)
- Evaporation to any desired consistency
- Multi-component reactions
- Gas dispersion below liquid surface
- Extraction multi phase mixture
- Crystallization
- Refluxing
- Common chemical reactions liquid/liquid, liquid/solid



## Modular glass / PTFE agitator



Glass stirrer shaft

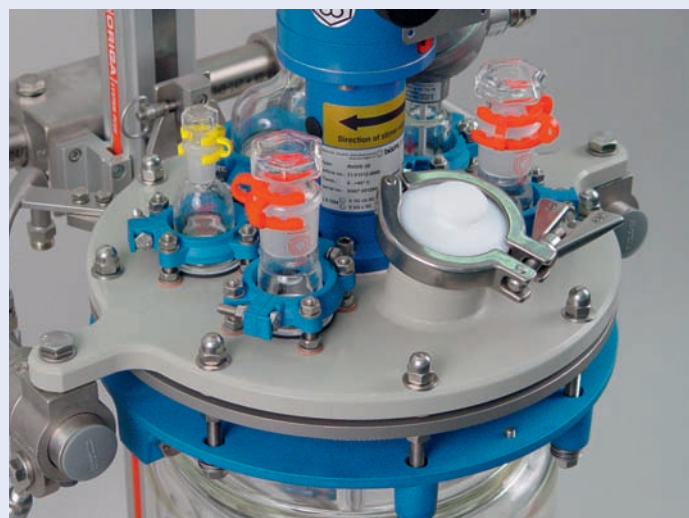


PFA coated stirrer shaft



Interchangeable stirrers

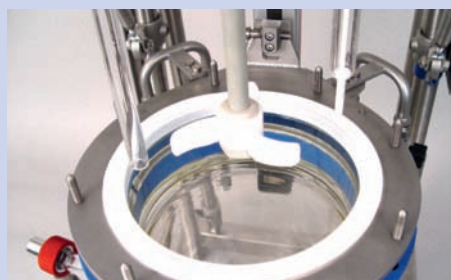
## PFA- coated cover plate with 7 openings



optional triple jacket



Glass overhead with spiral condenser, reflux divider, phase separator and distillate receiver



Vessel lowering device



Flush-mount drain valve

# Options



Gas Scrubber

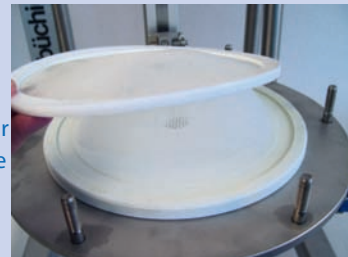


Nutsch filter with hand-stirrer

Manual lift for easy opening/closing



Quick filter change



CIP spray head made of PTFE



pH-measurement



Control / Display  
Different versions upon request

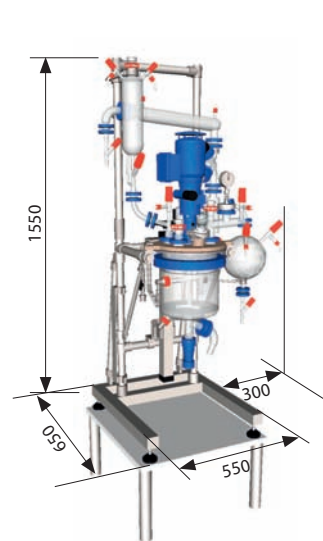
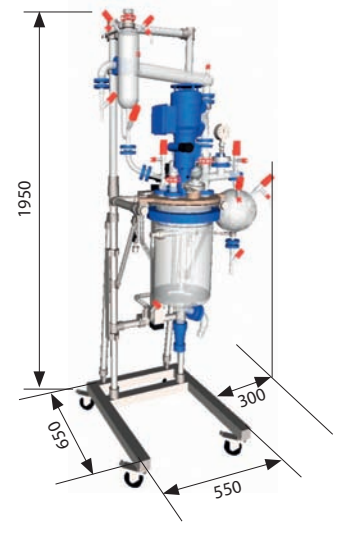


Table top model



Floor model



**KEN KIMBLE (Reactor Vessels) Ltd**  
 85 Thomas Way, Lakesview International Business Park  
 Hersden, Canterbury, Kent. CT3 4NH  
 Tel: 01227 710274 Fax: 01227 258840  
 Email: general@kenkimble.co.uk Web: www.kenkimble.com

