

Hydraulic Directional Control Valves

FAT-N | Vickers

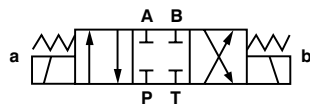
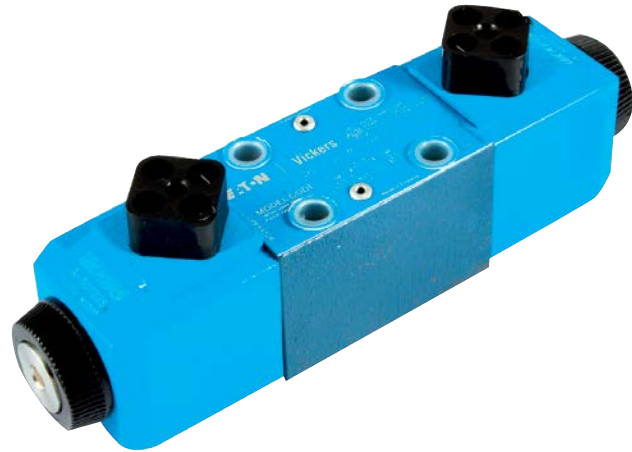
Page Tech Sheet **3111**

CETOP3 Double Solenoid Directional Control Valves

Max flow rates up to 80 l/min.
 Mounting Interface:
 ISO 4401 Size 3.
 ANSI/B93.7M Size 3.
 CETOP RP6SH Size 3.
 DIN 24340 (NG6).

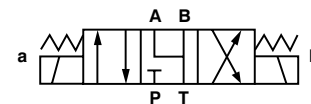
Temperature Limits:
 Min -20°C (-4°F)
 Max +70°C (+150°F)

Maximum Pressure:
 350 bar (5075 psi)



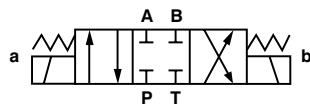
3 Position, All Ports Closed, Spring Centred

0343		Manufacturer's Code
529761	110V AC	DG4V 3 2C M U A6 60



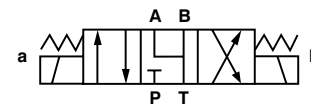
3 Position, A, B & T Connected, Spring Centred

0343		Manufacturer's Code
565465	24V DC	DG4V 3 6C M U H7 60
859177	110V AC	DG4V 3 6C M U A6 60



3 Position, All Ports Closed, Spring Centred, Water Resistant Override

0343		Manufacturer's Code
859172	220/240V	DG4V 3 2C H M U D6 60
870177	24V DC	DG4V 3 2C H M U H7 60
870378	12V DC	DG4V 3 2C H M U G7 60



3 Position, A, B & T Connected, Spring Centred, Water Resistant Override

0343		Manufacturer's Code
869952	12V DC	DG4V 3 6C H M U G7 60
869953	24V DC	DG4V 3 6C H M U H7 60
02-146111	110/120V 50/60Hz	DG4V 3 6C H M U B6 60

Other voltages are available. Please contact Business Development Team for more details.

Section 1 – Hydraulics

Hydraulics

Hydraulic QRC

Pneumatic QRC

Ind. Air Prep., Monitor & Test

KELM™ Pneumatics

Pneumatic & Vacuum Equipment

Valves

Ring Main Systems

Adaptors & Fittings

Stainless Steel

Malleable Iron

Hose, Tubing & Couplings

Clamps & Clips

Sprays & Adhesives

Blow Guns & Vacuum

Wash Down & Fuelling

Air Tools

Tools, Hardware & PPE