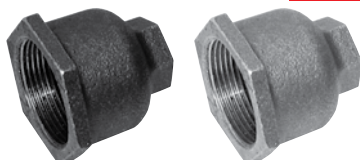


Malleable Iron Pipe Fittings

CRANE

Reducing Socket (Fig 179)

Tech Sheet
20774



Black, BSPT

1091



C179-38-14N	3/8"	1/4"
C179-12-14N	1/2"	1/4"
C179-12-38N	1/2"	3/8"
C179-34-14N	3/4"	1/4"
C179-34-38N	3/4"	3/8"
C179-34-12N	3/4"	1/2"
C179-1-14N	1"	1/4"
C179-1-12N	1"	1/2"
C179-1-34N	1"	3/4"
C179-114-12N	1.1/4"	1/2"
C179-114-1N	1.1/4"	1"
C179-112-34N	1.1/2"	3/4"
C179-112-1N	1.1/2"	1"
C179-112-114N	1.1/2"	1.1/4"
C179-2-34N	2"	3/4"
C179-2-1N	2"	1"
C179-2-114N	2"	1.1/4"
C179-2-112N	2"	1.1/2"
C179-212-112N	2.1/2"	1.1/2"
C179-212-2N	2.1/2"	2"
C179-3-1N	3"	1"
C179-3-2N	3"	2"
C179-3-212N	3"	2.1/2"
C179-4-2N	4"	2"
C179-4-212N	4"	2.1/2"

Galvanised, BSPT

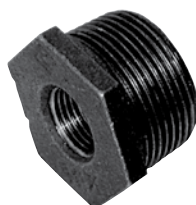
1091



C179-38-14	3/8"	1/4"
C179-12-14	1/2"	1/4"
C179-12-38	1/2"	3/8"
C179-34-14	3/4"	1/4"
C179-34-12	3/4"	1/2"
C179-1-12	1"	1/2"
C179-1-34	1"	3/4"
C179-114-34	1.1/4"	3/4"
C179-114-1	1.1/4"	1"
C179-112-34	1.1/2"	3/4"
C179-112-1	1.1/2"	1"
C179-112-114	1.1/2"	1.1/4"
C179-2-12	2"	1/2"
C179-2-34	2"	3/4"
C179-2-1	2"	1"
C179-2-114	2"	1.1/4"
C179-2-112	2"	1.1/2"
C179-212-1	2.1/2"	1"
C179-212-112	2.1/2"	1.1/2"
C179-212-2	2.1/2"	2"
C179-3-1	3"	1"
C179-3-2	3"	2"
C179-3-212	3"	2.1/2"
C179-4-2	4"	2"
C179-4-212	4"	2.1/2"
C179-4-3	4"	3"

Hexagon Bush (Fig 140)

Tech Sheet
10671



Black, BSPT

1091



C140-14-18N	1/4"	1/8"
C140-38-18N	3/8"	1/8"
C140-38-14N	3/8"	1/4"
C140-12-18N	1/2"	1/8"
C140-12-14N	1/2"	1/4"
C140-12-38N	1/2"	3/8"
C140-34-18N	3/4"	1/8"
C140-34-14N	3/4"	1/4"
C140-34-38N	3/4"	3/8"
C140-34-12N	3/4"	1/2"
C140-1-14N	1"	1/4"
C140-1-38N	1"	3/8"
C140-1-12N	1"	1/2"
C140-1-34N	1"	3/4"
C140-114-14N	1.1/4"	1/4"
C140-114-38N	1.1/4"	3/8"
C140-114-34N	1.1/4"	3/4"
C140-114-1N	1.1/4"	1"
C140-112-14N	1.1/2"	1/4"
C140-112-38N	1.1/2"	3/8"
C140-112-12N	1.1/2"	1/2"
C140-112-34N	1.1/2"	3/4"
C140-112-1N	1.1/2"	1"
C140-112-114N	1.1/2"	1.1/4"
C140-2-12N	2"	1/2"
C140-2-34N	2"	3/4"
C140-2-1N	2"	1"
C140-2-114N	2"	1.1/4"
C140-2-112N	2"	1.1/2"
C140-212-12N	2.1/2"	1/2"
C140-212-34N	2.1/2"	3/4"
C140-212-1N	2.1/2"	1"
C140-212-114N	2.1/2"	1.1/4"
C140-212-112N	2.1/2"	1.1/2"
C140-212-2N	2.1/2"	2"
C140-3-114N	3"	1.1/4"
C140-3-112N	3"	1.1/2"
C140-3-2N	3"	2"
C140-3-212N	3"	2.1/2"
C140-4-1N	4"	1"
C140-4-112N	4"	1.1/2"
C140-4-2N	4"	2"
C140-4-212N	4"	2.1/2"
C140-4-3N	4"	3"

Galvanised, BSPT

1091



C140-14-18	1/4"	1/8"
C140-38-18	3/8"	1/8"
C140-38-14	3/8"	1/4"
C140-12-18	1/2"	1/8"
C140-12-14	1/2"	1/4"
C140-12-38	1/2"	3/8"
C140-34-18	3/4"	1/8"
C140-34-14	3/4"	1/4"
C140-34-38	3/4"	3/8"
C140-34-12	3/4"	1/2"
C140-1-14	1"	1/4"
C140-1-38	1"	3/8"
C140-1-12	1"	1/2"
C140-1-34	1"	3/4"
C140-114-12	1.1/4"	1/2"
C140-114-34	1.1/4"	3/4"
C140-114-1	1.1/4"	1"
C140-112-14	1.1/2"	1/4"
C140-112-38	1.1/2"	3/8"
C140-112-12	1.1/2"	1/2"
C140-112-34	1.1/2"	3/4"
C140-112-1	1.1/2"	1"
C140-112-114	1.1/2"	1.1/4"
C140-2-12	2"	1/2"
C140-2-34	2"	3/4"
C140-2-1	2"	1"
C140-2-114	2"	1.1/4"
C140-2-112	2"	1.1/2"
C140-212-12	2.1/2"	1/2"
C140-212-34	2.1/2"	3/4"
C140-212-1	2.1/2"	1"
C140-212-114	2.1/2"	1.1/4"
C140-212-112	2.1/2"	1.1/2"
C140-212-2	2.1/2"	2"
C140-3-1	3"	1"
C140-3-112	3"	1.1/2"
C140-3-2	3"	2"
C140-3-212	3"	2.1/2"
C140-4-114	4"	1.1/4"
C140-4-2	4"	2"
C140-4-212	4"	2.1/2"
C140-4-3	4"	3"