



PLC based  
controller for presses



Helm-Pak® utilizes the latest design technology from Allen-Bradley for superior performance, excellent functionality and ease of use.



Helm-Pak features models 1520 and 1530 strain gage and resolver input modules for the MicroLogix™ 1500 and CompactLogix™ platforms.

# Enabled™

by Rockwell Automation  
TECHNOLOGIES



# HELM



### Standard features include:

- Resolver based brake monitor
- 8 channels PLS
- 8 channels die monitoring
- Unlimited job recipe
- Downtime reporting
- 12 inch color touch screen
- Counters: stroke, parts, batch
- Ethernet port
- SPC reporting

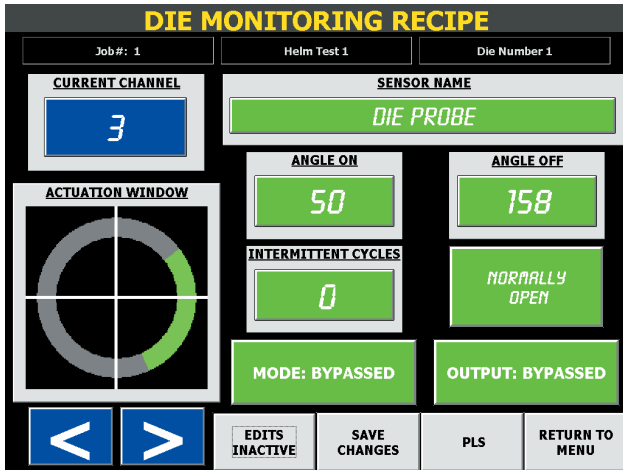
### Available Options:

- 2 and 4 channel load monitoring
- Servo feed interface
- Remote access modem
- Shut height monitor
- In-Die force sensors
- Analog inputs for In-Die gaging
- FirstMate reporting software

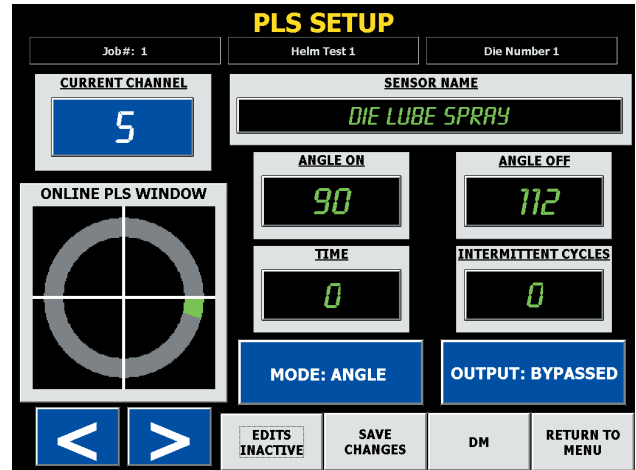


### Global support.

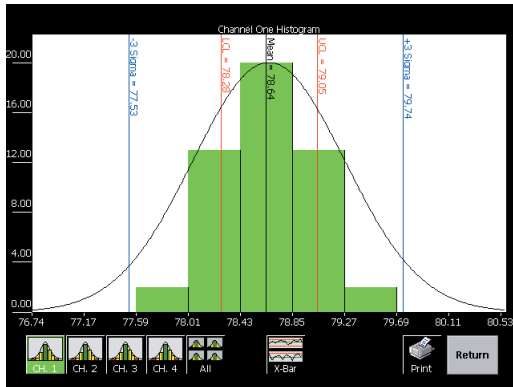
Australia, Austria, Belgium, Brazil, China, People's Republic of Croatia, Czech Republic, Denmark, France, Germany, Hong Kong, Hungary, India, Indonesia, Ireland, Israel, Italy, Japan, Malaysia, Mexico, The Netherlands, Norway, Phillipines, Poland, Russia, Singapore, Slovakia, Slovenia, South Africa, Republic of South Korea, Spain, Sweden, Switzerland.



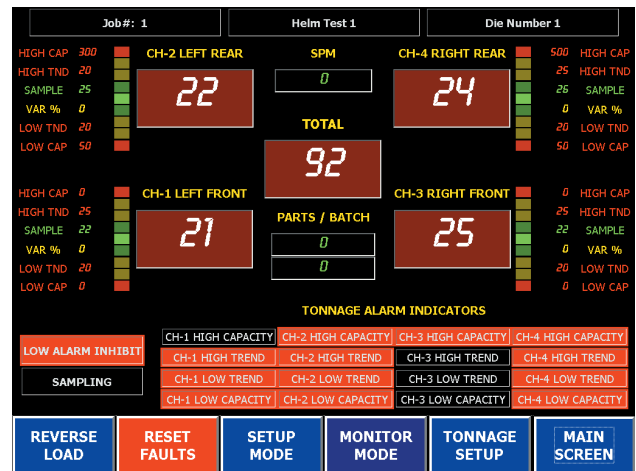
Die Monitoring



Programmable Limit Switch



SPC reporting from tonnage monitor



Tonnage Monitoring



Contact us to see how the Helm-Pak Automation Controller can be upgraded to a complete clutch brake control system.



Featuring an embedded PC, the Helm-Pak Micro-Series has virtually unlimited job recipe storage.



Visit our Web Site at: <http://www.helminstrument.com> or  
E-Mail us at: [sales@helminstrument.com](mailto:sales@helminstrument.com)

Helm Instrument Company, Inc.  
361 West Dussel Drive  
Maumee, OH 43537  
419/893-4356 Phone  
419/893-1371 Fax