

Cable entry systems

perfect – innovative – smart



Patent

Cable entry systems
Control systems engineering
Switch cabinet engineering
Vehicle engineering
Plant engineering
Machine construction
Electrical installation
...

The cable entry system is a combination of cable entry frame and captive split inserts. The extraordinary advantage is the consequential split of the system, which enables pre-terminated cables, wires and conduits to be routed into panels, machines, junction boxes and through walls. Particularly suitable for the following applications: measuring-servo-, computer-cables and bus-systems. The KEL-System is available in several sizes.

Cables with various diameters can be installed using the captive split inserts. Both a high protection to IP 54 and strain relief are achieved through correct selection of inserts.

A gasket (included in shipment) between frame and surface of the cabinet provides a gasket and balances roughness.



Supplier-warranty of pre-terminated cables remains valid, as connectors do not have to be cut/unsoldered and then soldered on again

Perfect, simple assembly, cost-effective



1. Consistently split system

The cube-shaped, split insert gets positively guided and compressed, thereby sealing is achieved.

2. Quick and simple assembly

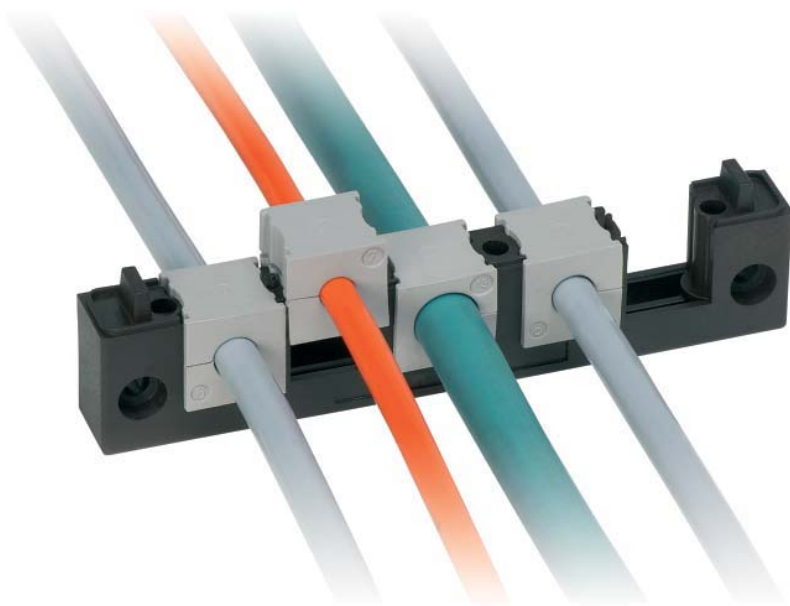
Captive inserts, with fixed and secure hold in the half shell, **secure hold according to DIN EN-50262.**

3. No new punching tool

Drilling templates, as well as cut-outs according to the standard-dimensions for connectors (e.g. Harting, Wieland).

4. Tight connection

The pre-defined gap assures a tight, secure and sealed connection (**IP 54**).



KEL cable entry frames

The split insert is matched with the cable diameter, then put around the cable and inserted into the cable entry frame.

The split frame is assembled with Allen screws M5x50 DIN 912 (included in delivery). The screws are secured i.e. trouble-free assembly when working overhead.

 The matching inserts can be found on pages 18 and 19.



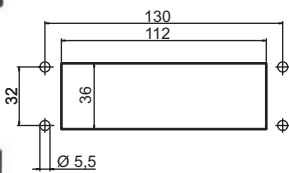
Captive insert

KEL cable entry frame for standard-dimensions of 24-pole connectors



KEL cable entry frame with closed half shell

Dimensions KEL 24
Standardised cutout for multi pole connectors series 24
36 x 112 mm

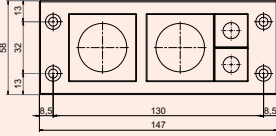
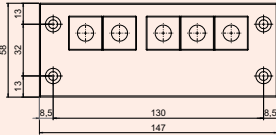
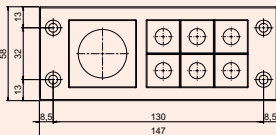
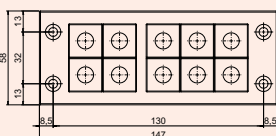


Instead of 36 mm, 46 mm can also be chosen for the cut-out width.
Thus pre-fabricated multi pole connectors can be used with our KEL-system



Surrounding flange-clip-connection seals

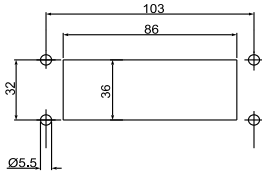
Specification:
Material: Polyamide
UL-94 V0, self-extinguishing, halogen-free, silicone-free, IP54 with gasket and correct selection of the cable inserts

Description	Type	Order No.	Number of inserts small / large	PU
	KEL 24/4	42244	2 / 2	10
	KEL 24/5	42248	5 / -	10
	KEL 24/7	42247	6 / 1	10
	KEL 24/10	42241	10 / -	10

KEL cable entry frame for standard-dimensions of 16-pole connectors

Dimensions KEL 16

Standardised cut-out for multi pole connectors series 16
36 x 86 mm



Instead of 36 mm, 46 mm can also be chosen for the cut-out width.

Thus pre-fabricated multi pole connectors can be used with our KEL-system.

Specification:

Material: Polyamide
UL-94 V0, self-extinguishing,
halogen-free, silicone-free,
IP54 with gasket and correct
selection of the cable inserts

Description	Type	Order No.	Number of inserts small / large	PU
	KEL 16/2	42162	- / 2	10
	KEL 16/4	42164	4 / -	10
	KEL 16/5	42165	4 / 1	10
	KEL 16/8	42168	8 / -	10

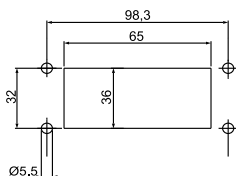
The matching inserts can be found on pages 18 and 19.

KEL cable entry frame for standard-dimensions of 10-pole connectors



Dimensions KEL 10

Standardised cut-out type of multi pole connectors of the series 10
36 x 65 mm



Specification:

Material: Polyamide, UL-94 V0, self-extinguishing,
halogen-free, silicone-free,
IP54 with gasket and correct selection of the
cable inserts

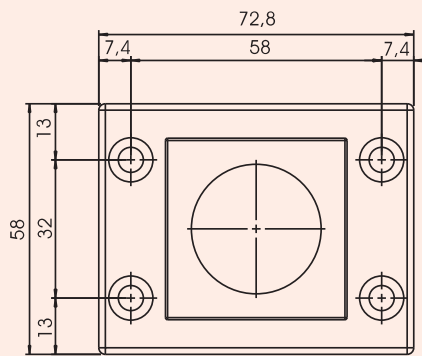
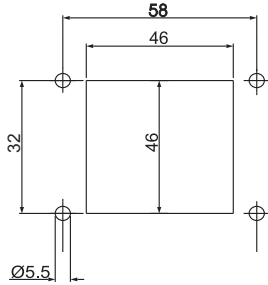
Cut-out dimensions 36 x 65 corresponds to the standardised cut-out type for 10-pole connectors. Instead of 36 mm, 46 mm can also be chosen for the cut-out width.

Description	Type	Order No.	Number of inserts small / large	PU
	KEL 10/3	42212	2 / 1	10
	KEL 10/6	42216	6 / -	10

Cable entry frames

KEL-B1 KEL-B4

Cable entry frame KEL-B1 KEL-B4

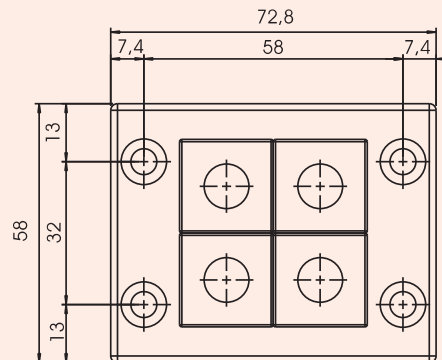


KEL-B1

42206

- / 1

10



KEL-B4

42204

4 / -

10

Required cut-out dimensions
46 x 46 mm

Specification:
Material: Polyamide
UL-94 V0, self-extinguishing,
halogen-free, silicone-free,
IP54 with gasket and correct
selection of the cable inserts

 The matching inserts can be found on pages 18 and 19.

Cable entry frames

KEL 24/14 KEL 24/24

The matching inserts can be found on pages 18 and 19.

Cable entry frame KEL 24/14 KEL 24/24



Specification:
 Material: Polyamide
 UL-94 V0, self-extinguishing,
 halogen-free, silicone-free,
 IP54 with gasket and correct
 selection of the cable inserts

Description	Type	Order No.	Number inserts small / large	PU
<p>Required cut-out dimensions 82 x 112 mm</p>	KEL 24/14	42225	12 / 2	1
<p>Required cut-out dimensions 126 x 112 mm</p>	KEL 24/24	42227	22 / 2	1

Cable entry frames

KEL 24/20 KEL 24/30

The matching inserts can be found on pages 18 and 19.

Cable entry frame KEL 24/20 KEL 24/30

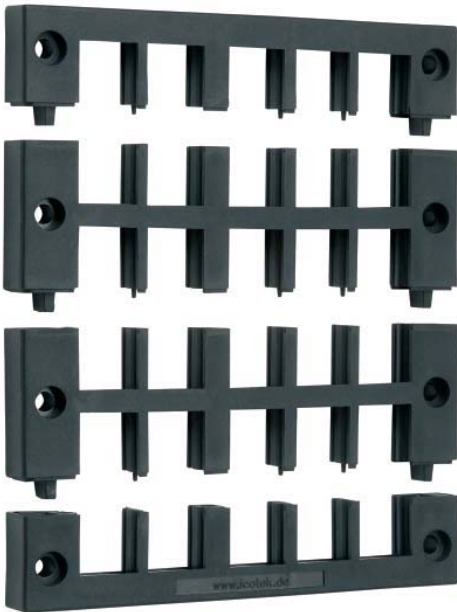


Specification:
 Material: Polyamide
 UL-94 V0, self-extinguishing,
 halogen-free, silicone-free,
 IP54 with gasket and correct
 selection of the cable inserts

Description	Type	Order No.	Number inserts small / large	PU
<p>Required cut-out dimensions 82 x 112 mm</p>	KEL 24/20	42232	20 / -	1
<p>Required cut-out dimensions 126 x 112 mm</p>	KEL 24/30	42234	30 / -	1

Cable entry frames

KEL-MT

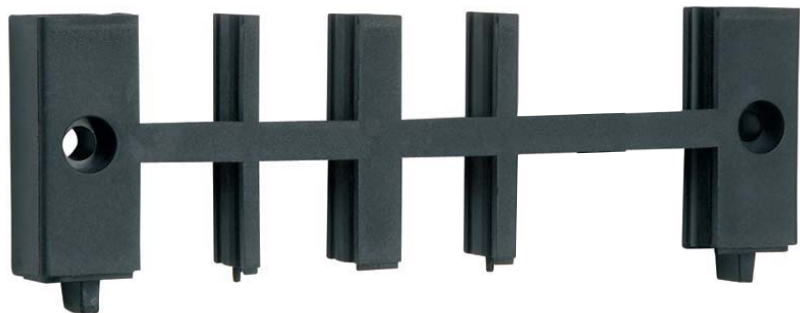
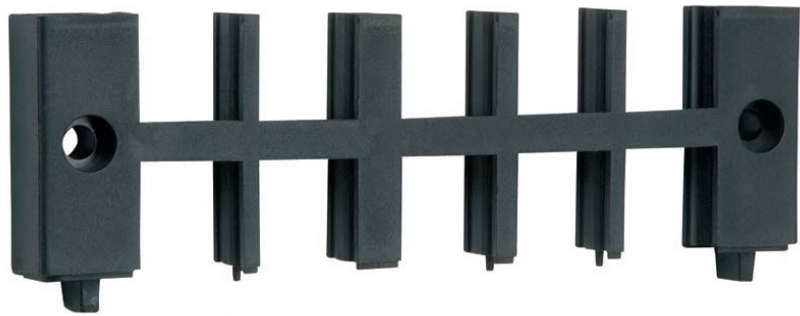


The KEL-MT centre piece opens up numerous possibilities which expand the standard KEL frames 24/7 and 24/10. By using the KEL-MT centre piece, the packing density can be increased considerably. This is also a good idea for space reasons because space and costs can be saved. icotek offers you extension sets which contain all required parts.

Extension sets

Each consisting of

- The appropriate centre piece(s)
- Appropriate gasket, self-adhesive on one side
- The appropriate screws



Specification:

Material: Polyamide
 UL-94 V0, self-extinguishing,
 halogen-free, silicone-free,
 IP54 with gasket and correct
 selection of the cable inserts

From	To	KEL 24/14	KEL 24/20	KEL 24/24	KEL 24/30	PU
KEL 24/7		42193	-	42194	-	1
KEL 24/10		-	42190	-	42191	1
KEL 24/20		-	-	-	42192	1

Cable entry frames

KEL-E2 KEL-E5



The cable entry frames of model E are particularly suited for flat connectors. Space-saving and thereby ideal with limited space.

The matching inserts can be found on pages 18 and 19.

Cable entry frame KEL-E2 / KEL-E5

Description	Type	Order No.	Number of inserts small / large	PU
<p>Required cut-out dimensions 43 x 24 mm</p>	KEL-E 2	42249	2 / -	10
<p>Required cut-out dimensions 116 x 24 mm</p> <p>Specification: Material: Polyamide, UL-94 V0, self-extinguishing, halogen-free, silicone-free, IP54 with gasket and correct selection of the cable inserts</p>	KEL-E 5	42250	5 / -	10