



**WORKSHOP CRANES
& ACCESS PLATFORMS**

W O R - L I F T S







WE'RE GETTING DOWN TO IT!

THINKING OUTSIDE THE BOX

We understand, in the workshop, space is at a premium. Which is why when we developed the Advanced folding crane, we thought small. Very small.

However, when it comes down to performance, this is no dinky toy, nor will you find it in the matchbox series.

Light on its feet and highly manoeuvrable, this unique workshop crane can lift 1000 kgs to a height of 2.4 metres. No small feat.

Job done, simply fold it down and tuck it away on a 30 cm. sq. footprint!

This innovation in inner space is just one example of our ongoing commitment to reducing the size, weight and cost of materials handling equipment, but at the same time increasing performance.

If you are looking to give your business a little lift, box clever, size up the competition, then tell them to sling their hook!

FOLDING WORKSHOP CRANES

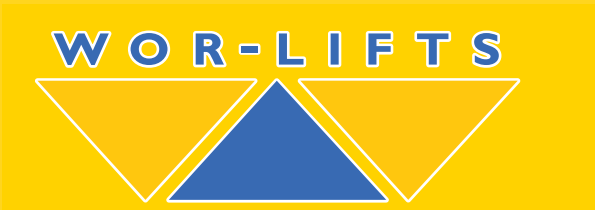
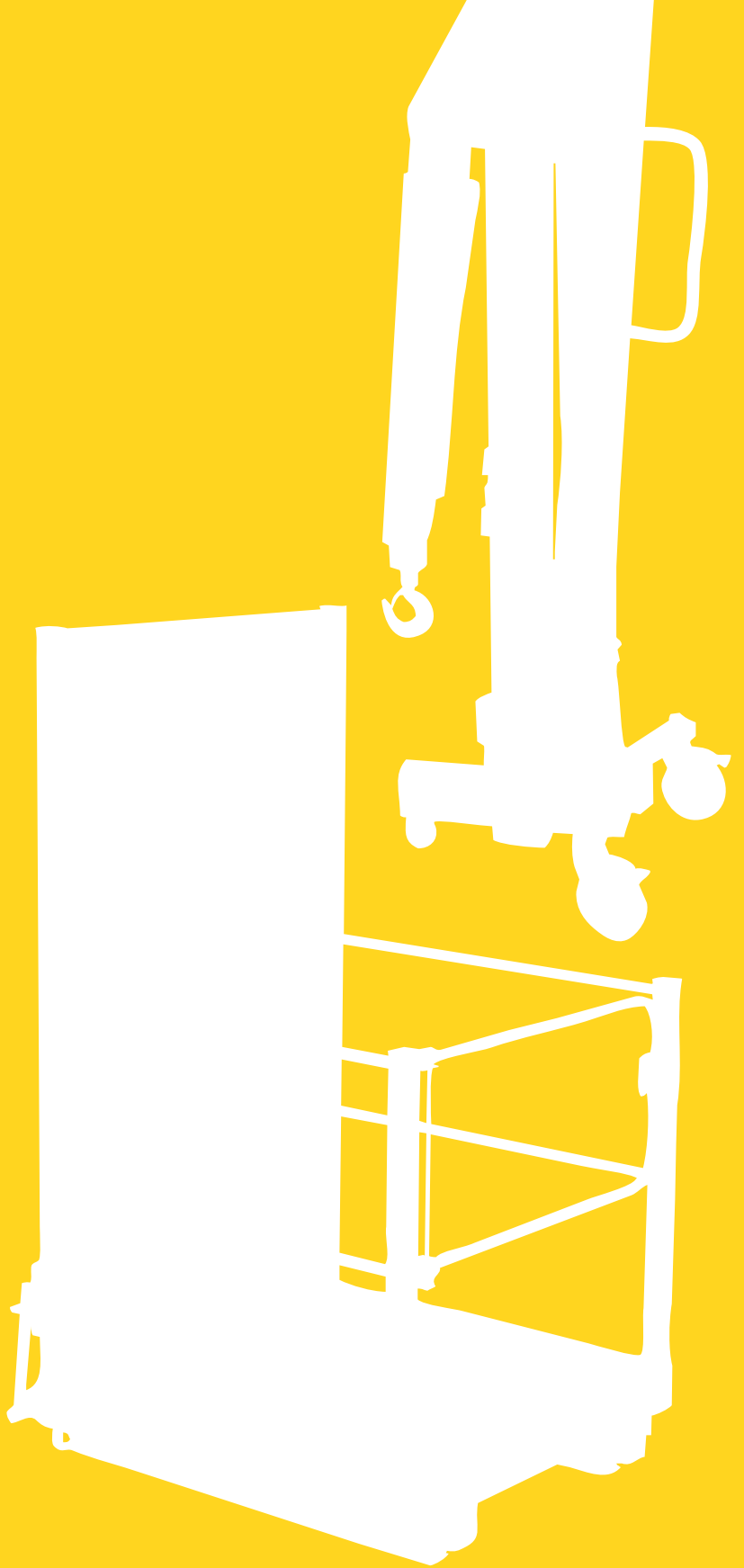
- **Small Footprint:** for storage when not in use
- **Flow Control Valve:** for precise, controlled lowering
- **Deadman Lowering System:** for increased safety
- **4 Different Hook Positions:** the right position for every job
- **Capacity:** 500kg - 1000kg
- **Maximum height of Crane jib:** 2670mm
- **Manual hydraulic operation**
- **Heavy duty** full swivel hook fitted with a safety clip.
- **Versatile:** 4 separate hook positions.
- **Ergonomic:** Jacks from folded position. Folds into vertical position for ease of storage



ACCESS PLATFORMS

- **Protection:** total protection for the user
- **Automatic Locking Mechanism:** without damaging the forks
- **Gate Locking Mechanism:** automatic
- **Complimentary:** essential for any fork lift
- **Capacity:** 250kg
- **Overall Height:** 1900mm
- **Platform size:** 1000 x 1000mm with fork pocket width of 164mm x 80mm in depth. Fork centres 640mm
- **Safe:** Manufactured to Health & Safety guidance note PM28.
- **Optional extras include:** Tool tray, fluorescent tube holder, 4 swivel castors, safety harness and an overhead guard.





WORLIFTS Limited

Guild House,
Sandy Lane,
Wildmoor,
Bromsgrove,
Worcestershire.
B61 0QU

Tel: 0121 460 1113

Fax: 0121 460 1116

Email: sales@worlifts.co.uk

Web: www.worlifts.co.uk