

ELECTRIC EXTERNAL VIBRATORS

MODEL M3

- Rotary Vibrator
- Protection IP66, IK 08 shock-resistance level
- Insulation Class F (155°C)
- 24V to 690V available
- Ambient temperature -20°C to +40°C
- Atex rated as standard for zone 21 & 22

2 CHAPEL ROAD, PORTSLADE, BRIGHTON, BN41 1PF ENGLAND
Tel. +44(0) 1273 430977 Fax. +44 (0) 1273 430978
Web. www.vibtec.com E-mail. sales@vibtec.com

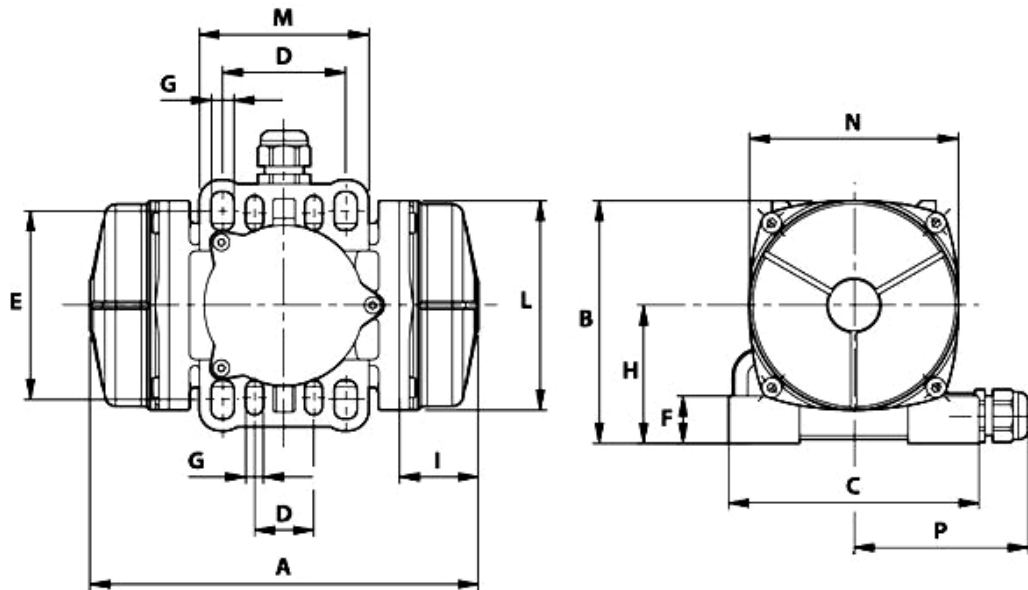
PERFORMANCE DATA

2 POLES 3000 RPM

MODEL	Category	Max C/F kg	Amps	Watts	RPM	Weight kg
M3/65-S02	220V 1Ph 50Hz	64.7	0.56	110	3000	4.30
M3/105-S02		97.0	0.75	165	3000	5.2
M3/205-S02		211	0.75	165	3000	6.0
M3/305-S02		311	0.75	165	3000	6.3
M3/65-S02	400V 3Ph 50Hz	64.7	0.27	120	3000	4.30
M3/105-S02		97.0	0.35	180	3000	5.2
M3/205-S02		211	0.35	180	3000	6.0
M3/305-S02		311	0.35	180	3000	6.3

4 POLES 1500 RPM

MODEL	Category	Max C/F kg	Amps	Watts	RPM	Weight kg
M15/36-S02	220V 1Ph 50Hz	30.2	0.43	90	1500	5.4
M15/81-S02		77.9	0.43	90	1500	6.3
M15/36-S02	400V 3Ph 50Hz	30.2	0.21	85	1500	5.4
M15/81-S02		77.9	0.21	85	1500	6.3



DIMENSIONS

MODEL	A	B	C	Multi-hole		F	ØG	No. Holes	H	I	ØL	M	N	P	Gland
				D	E										
M3/65-S02	197	123	127	30-60 65-62	85-100 85-106	24	9	4	70	40	106	86	106	88.5	M20x1.5
M3/105-S02	211									47					
M3/205-S02	235									59					
M3/305-S02	235									59					
M15/36-S02	235									59					
M15/81-S02	235									59					