

Vibration Solutions



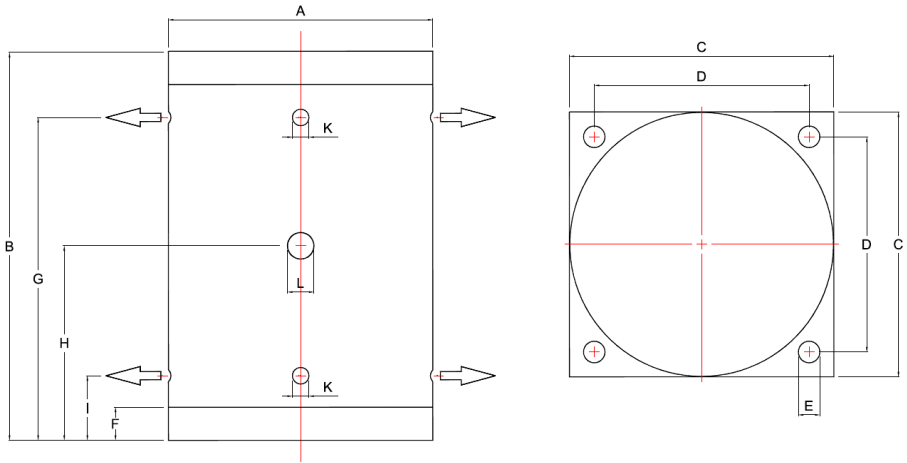
Technical Characteristics

| Model | Frequency VPM | | | Force N | | | Working Moment cmkg | | | Air Consumption l/min | | |
|-----------|------------------|-------|-------|------------|-------|-------|------------------------|-------|-------|--------------------------|-------|-------|
| | 2 bar | 4 bar | 6 bar | 2 bar | 4 bar | 6 bar | 2 bar | 4 bar | 6 bar | 2 bar | 4 bar | 6 bar |
| VFP 75/01 | 2890 | 3780 | 4450 | 400 | 770 | 1180 | 0.9 | 1.0 | 1.1 | 110 | 235 | 370 |
| VFP 50/01 | 2280 | 2736 | 3260 | 450 | 750 | 1130 | 1.6 | 1.8 | 1.9 | 108 | 225 | 350 |
| VFP 54/02 | 1630 | 2350 | 2760 | 450 | 1210 | 2130 | 3.1 | 4.0 | 5.1 | 100 | 300 | 420 |
| VFP 50/04 | 2000 | 2500 | 3000 | 1130 | 2390 | 3500 | 5.2 | 7.0 | 7.1 | 126 | 282 | 450 |
| VFP 50/10 | 1800 | 2300 | 2850 | 2160 | 4930 | 8020 | 13 | 17 | 18 | 150 | 700 | 940 |
| VFP 30/10 | 840 | 1044 | 1300 | 1940 | 4780 | 8900 | 50 | 80 | 96 | 280 | 730 | 1060 |
| VFP 50/20 | 1940 | 2120 | 2800 | 8050 | 13730 | 18640 | 39 | 43 | 56 | 794 | 1658 | 2280 |
| VFP 30/20 | 1200 | 1300 | 1750 | 5890 | 12750 | 19600 | 75 | 117 | 138 | 1036 | 2246 | 3110 |
| VFP 24/20 | 980 | 1200 | 1420 | 6870 | 14700 | 20600 | 130 | 186 | 186 | 1038 | 2076 | 3028 |

IMPORTANT NOTICE

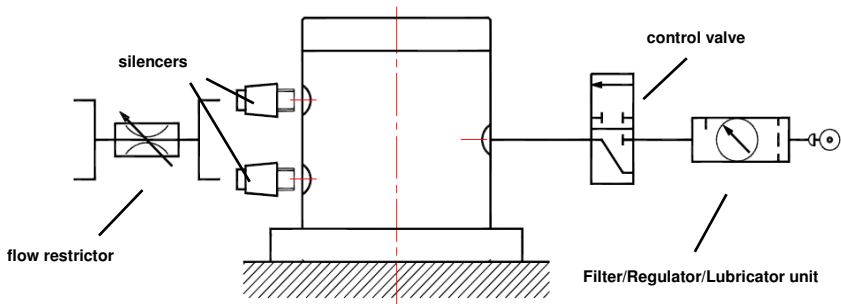
Vibrators and vibrating equipment can be dangerous if not used correctly.

- DO NOT** hold or touch when running.
- DO NOT** stand or sit on vibratory equipment when running.
- USE ONLY** for the purpose intended.
- USE ONLY** when vibrators are securely mounted.
- USE ONLY** when pneumatic hoses and fittings are securely tightened.
- ALWAYS** wear ear protectors.



| Dimensions | | | | | | | | | | | | | | |
|------------|------|------|------|------|------|------|------|------|------|--------|--------|-------------|---------------|--------------|
| MODEL | A mm | B mm | C mm | D mm | E mm | F mm | G mm | H mm | I mm | K inch | L inch | Body Wt kgs | Piston Wt kgs | Total Wt kgs |
| VFP 75/01 | 79 | 115 | 90 | 72 | 8.5 | 20 | 81 | 60 | 38 | 1/4" | 1/4" | 1.1 | 0.8 | 1.9 |
| VFP 50/01 | 79 | 155 | 90 | 72 | 8.5 | 20 | 121 | 80 | 40 | 1/4" | 1/4" | 1.5 | 1.4 | 2.9 |
| VFP 54/02 | 100 | 156 | 110 | 90 | 9 | 19 | 111 | 77.5 | 44 | 3/8" | 3/8" | 2.3 | 1.6 | 3.9 |
| VFP 50/04 | 140 | 157 | 150 | 124 | 13 | 20 | 112 | 89 | 45 | 3/8" | 3/8" | 11.6 | 4.3 | 15.9 |
| VFP 50/10 | 190 | 157 | 200 | 165 | 17 | 20 | 110 | 79 | 45 | 3/8" | 1/2" | 20 | 9 | 29 |
| VFP 30/10 | 190 | 340 | 200 | 165 | 17 | 20 | 290 | 170 | 50 | 3/8" | 1/2" | 41 | 25 | 66 |
| VFP 50/20 | 250 | 190 | 250 | 210 | 21 | 30 | 134 | 95 | 57 | 3/8" | 3/4" | 42 | 19 | 61 |
| VFP 30/20 | 250 | 278 | 250 | 210 | 21 | 30 | 218 | 139 | 61 | 3/8" | 3/4" | 54 | 37 | 91 |
| VFP 24/20 | 250 | 360 | 250 | 210 | 21 | 30 | 298 | 180 | 62 | 3/8" | 3/4" | 68 | 54 | 122 |

Standard Installation



OPERATING AND MAINTENANCE INSTRUCTIONS



The VFP range of Linear Vibrators operate on compressed air up to 6.5 bar max. via a Filter/ Regulator/ Lubricator unit (FRL). The working temperature should be in range +5°C - +60°C. Noise level with efficient silencers 75 - 85dB(A).

Installation

1. The vibrator must be securely bolted to a flat surface by suitably sized high tensile bolts (quality 8.8 - DIN 931-933).
2. Before starting the vibrator for the first time ensure all bolts, screws and hose connections are secure.

Operating

1. Adjusting the air pressure varies the vibrator's frequency and therefore the force.
2. Adjusting the exhaust flow regulates the amplitude, keeping the frequency constant.

Maintenance

Generally little maintenance is required if good quality filtered air is used.

1. If vibrator is not to be used for long periods, add a few drops of oil into the ports.
2. If the vibrator becomes sluggish or reluctant to start, try a few drops of WD 40 in the ports and allow to soak.
3. Only if the above fails should the vibrator be dismantled and carefully cleaned in paraffin. The vibrator consists of a body, top plate, base plate and piston.
4. Care should be taken when removing the heavy piston from the body not to damage the edges.
5. If the piston has seized in the body, carefully knock out with a soft mallet and if its not damage clean surfaces with fine emery paper.

Safety

1. Always ensure compressed air is off during installation or maintenance.
2. Always ensure lubrication is working adequately. Use oil SAE 5 - SAE 20.
3. Always use locknuts, locking washers or Loctite with fixing bolts to secure the vibrator.
4. Always maintain a regular check on the tightness of the fixing bolts.
5. Always check tightness of hose connections regularly.



VIBTEC
VIBRATECHNIQUES LTD

Vibration Solutions

2 CHAPEL ROAD, PORTSLADE, BRIGHTON, BN41 1PF ENGLAND
Tel. +44(0) 1273 430977 Fax. +44 (0) 1273 430978

Web. www.vibtec.com E-mail. sales@vibtec.com