

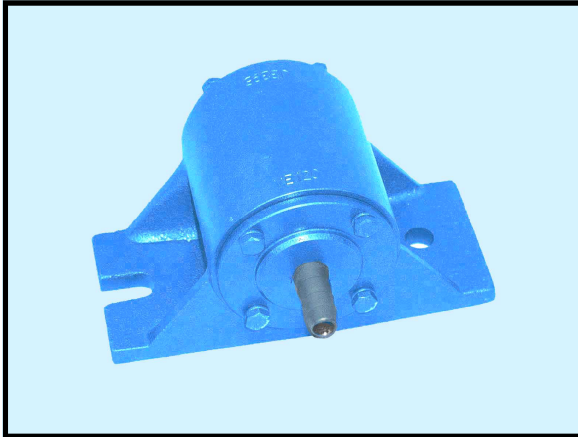
VIBTEC

VIBRATECHNIQUES LTD

Vibration Solutions



VE PNEUMATIC VIBRATORS OPERATING MANUAL



Technical Characteristics

Model	Frequency VPM	C/Force N	Amplitude mm	Air Consumption l/min	Noise level dBA	Weight Kgs
VE 75	13000	7500	1.2	1170	102	9.6
VE 120	15000	12000	1.5	1170	102	10.2

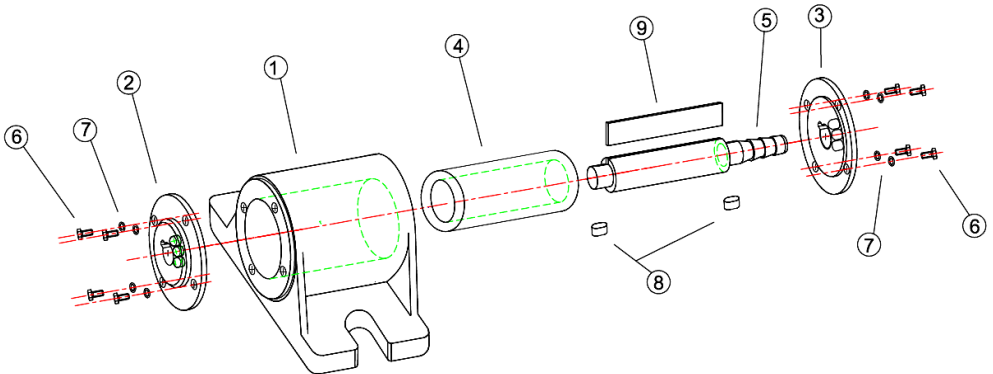
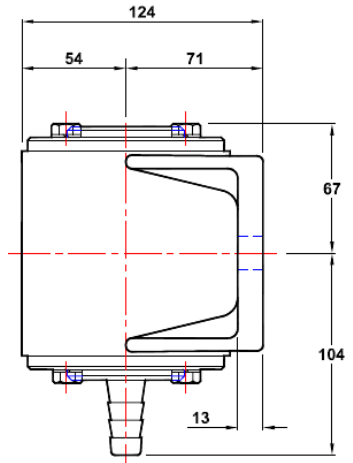
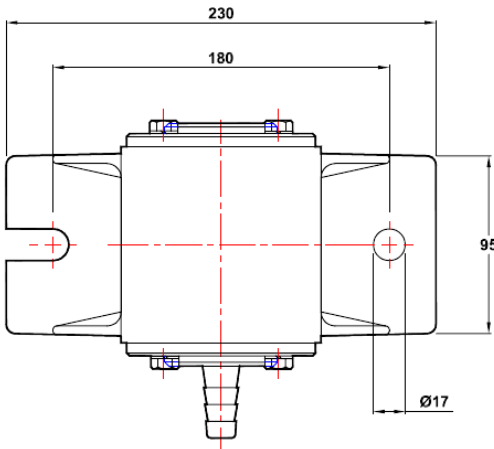
Performance data established in free air with a supply pressure of 6 Bar (87 p.s.i.)

IMPORTANT NOTICE

Vibrators and vibrating equipment can be dangerous if not used correctly.

1. **DO NOT** hold or touch when running.
2. **DO NOT** stand or sit on vibratory equipment when running.
3. **USE ONLY** for the purpose intended.
4. **USE ONLY** when vibrators are securely mounted.
5. **USE ONLY** when pneumatic hoses and fittings are securely tightened.
6. **ALWAYS** wear ear protectors.

We reserve the right to improve, modify or withdraw specifications or products without notice or obligation.



Spare Parts

Ref. No.	Qty.	Part Number	Description
1	1	646	Body
2	1	642	Front Plate
3	1	644	Rear Plate
4	1	533	Rotor 75
4	1	647	Rotor 120
5	1	643	Shaft
6	8	170	M8 x 25 Hex Bolts or Skt/Hd Cap Screws
7	8	169	M8 Spring Washers
8	2	530	Shaft Keys
9	1	532	Vane



Installation & General Maintenance

1. Vibrators are delivered without lubrication. Ensure to add oil before starting the vibrator.
2. Before connecting the vibrator, ensure the air line is clean from any dirt or water it may contain.
3. Once a day or every two hours of continuous use, introduce 4 cc of 20/30 S.A.E. non-detergent oil into the vibrator air line.
4. Ensure vibrators are securely bolted to sturdy flat mounting plates welded or bolted to your equipment. Check regularly that bolts remain tight.

See the back page for our suggestion on method of attaching the vibrator on wooden shuttering.

Dismantling Instructions

Remove hose from end of shaft (5). Remove bolts (6) and spring washers (7). Using a soft drift, drive shaft (5) out of front plate (2). The shaft (5) will come out with the rear plate (3) still attached. The front plate (2) remains mounted in the vibrator body (1). Care must be taken not to drop and lose the keys (8) which may fall out of the shaft (5). Remove rotor (4) from the assembly. Clean all parts with paraffin and dry carefully. Check the length of the rotor (4), which should be 100 - 0.06/0.008mm when new. Maximum wear of the rotors must not exceed 0.2mm as speed and power will greatly reduce. Check vane (9) and replace with a new one if worn.

Re-assembly Instructions

When fitting a new vane (9), ensure that it fits freely, but snug in the groove of the shaft (5). If necessary, carefully sand down the thickness with fine emery paper. The top of the vane must be flush or slightly under the lip of the groove in the shaft. Lightly oil all parts. Place the body (1), with front plate (2) attached, on a bench with front plate downwards. Locate rotor (4) centrally in the body (1). After re-fitting vane (9) in the groove of the shaft (5), fit keys (8) and insert shaft (5) with rear plate (3) attached through the rotor and locate in the front plate (2). Check alignment of key (8) in the front plate (2) and tap together. Refit bolts and washers. Refit hose.

ATTENTION

- Always ensure compressed air is off during installation or maintenance.**
- Always ensure only filtered air is used and the filter is cleaned regularly.**
- Always check tightness of securing bolts regularly.**
- Always check tightness of hose connections regularly.**



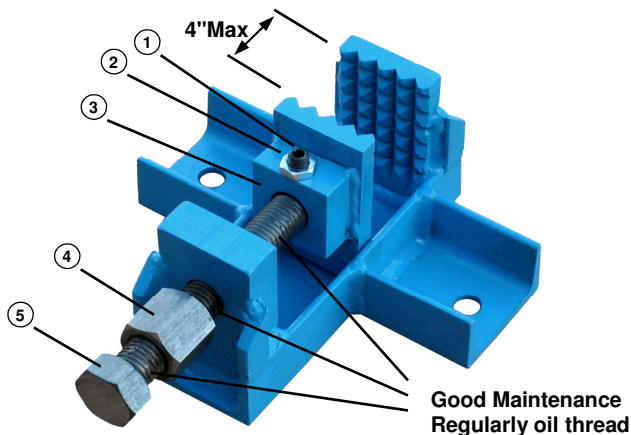
Alternative method of attaching vibrators on wooden shuttering using the VIBTEC Vice Clamp.



Important notice when using Vice Clamps

Vice Clamps are for use on **wooden shuttering only** and **must not** be used on steel directly. Attach vibrator **using only** M16 bolts, flat washers and spring washers and/or 'nyloc' nuts.

Check tightness of bolts before use and regularly during use.



Spare Parts

Ref. No.	Qty.	Part Number	Description
1	1	38617	Dog Point Grub Screw
2	1	38625	Hexagon Locking Nut
3	1	38616	Moving Jaw Block
4	1	38250	Clamp Nut
5	1	38618	Clamping Screw

VIBTEC

VIBRATECHNIQUES LTD

Vibration Solutions

2 CHAPEL ROAD, PORTSLADE, BRIGHTON, BN41 1PF ENGLAND

Tel. +44(0) 1273 430977 Fax. +44 (0) 1273 430978

Web. www.vibtec.com E-mail. sales@vibtec.com