

## FLOPLAST THERMAL FIRE PIPE SLEEVE



Tested to BS476: Part 20 & 22 2 Hours Plus.

Excellent Acoustic Insulation

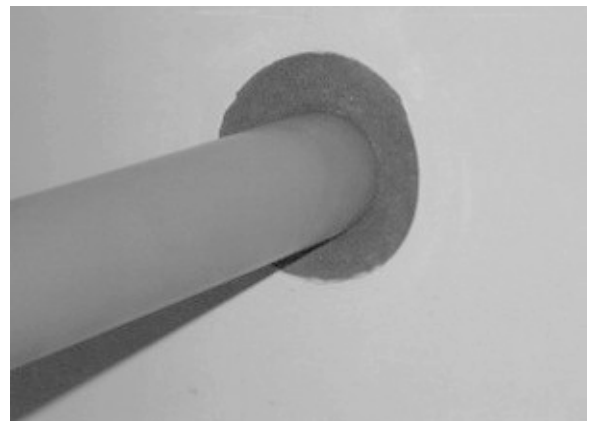
Suitable for use through a wide range of fire partition walls and floors.

Suitable for a wide range of plastic, copper and mild steel pipes.

Allows for thermal movement of pipe and maintains thermal insulation for the pipe through the penetration

LANTAC Building Control Approval

NHBC Type Approval



### Description

Steel, copper and plastic pipes are found in all commercial and domestic buildings. A high percentage of these pipes will penetrate through fire rated constructions such as ceilings, floors and walls. Once a hole is made in a fire rated construction for the passage of pipes or services the integrity of the compartment is compromised.

To solve this problem FloPlast have developed Thermal Fire Pipe Sleeve, which reinstates the fire rating of the construction and prevents fire spreading from one compartment to another, and prevents copper pipes from cement erosion.

The sleeve is a cost effective product for the fire stopping of pipe penetrations e.g. Plumbing pipe and metallic pipes whilst maintaining similar thermal and acoustic properties as standard mineral fibre insulation. These properties ensure compliance to water by-laws and building regulations for cold and hot water pipes and heating systems.

In a fire situation the sleeve expands to fill the available space between the pipe and the penetration. In the case of plastic pipes the sleeve will crush and close off the pipe forming a solid char and preventing the passage of fire and smoke to the adjacent compartment.

**Tested on the following Pipe Sizes to BS476 Part 20 for 2 Hours**

Copper 12mm-160mm  
Mild Steel 22mm-160mm  
Polybutylene 12mm-28mm  
PVC 55mm-160mm

All sleeves have been tested with a 25mm nominal wall thickness. Sleeves have been tested cut both flush to the wall / floor structure and leaving 25mm exposed for connection to standard pipe insulation.

The sleeve is simple to install, easy to cut and one sleeve can replace two collars, the sleeve may also be fitted flush to the wall for a clean line solution.

**Fire Test and Assessment Reports**

BS476: Part 20/22 2 hour rated at Chiltern international fire  
132 minutes integrity and insulation  
LANTAC Building Control Approval  
NHBC Type Approval

**Health and Safety**

See COSHH Sheet

**Installation**

Please refer to our install sheet

**Issue 09/07**

As part of our policy of ongoing improvements, we reserve the right to modify, alter or change product specifications without giving notice. Product illustrations are representations only. All information contained in this document is provided for guidance only, and as FloPlast Limited has no control over the installation methods of the products, or of the prevailing site conditions, no warranties expressed or implied are intended to be given as to the actual performance of the products mentioned or referred to, and no liability whatsoever will be accepted for any loss, damage or injury arising from the use of the information given of products mentioned or referred to herein.

The above information to the best of our knowledge is true and accurate and based upon current test data and is supplied for your guidance only. Customers should satisfy themselves to the suitability of the product in its intended use and no guarantee is given or implied since the conditions of actual use are beyond our control. FloPlast Limited, disclaim any liability for loss, damage or other expense arising from the use of information, data or products mentioned or referred to and reserve the right to change any details or specifications without notice.

FloPlast Limited. Castle Road, Eurolink Business Park,  
Sittingbourne, Kent ME10 3FP

Tel: 01795 431731 Fax: 01795 31188

Email: [sales@floplast.co.uk](mailto:sales@floplast.co.uk)