

FLOPLAST INTUMESCENT PIPE COLLARS

Introduction

The purpose of this document is to give guidance to approved contractors and suppliers who are engaged in the fire stopping of service penetrations in fire rated structures using the Fire Pipe Sleeve.

All service holes through floors and compartment walls must be fire stopped to prevent the passage of fire, smoke and hot gases.

The key points for intumescent passive fire protection products are:

- Prevent The Spread of Fire, Smoke And Hot Gases Through A Building By Containing It In The Compartment Of Origin.
- Maintain The Integrity Of Escape Routes From A Building.
- Reduce Loss Or Damage To Property From The Effect Of Fire And Smoke.
- Maintain Pressure Differential Between Compartments And Ventilation Channels

The FloPlast Thermal Pipe Sleeve System

The sleeve is a cost effective product for the fire stopping of pipe penetrations e.g. plumbing pipe and metallic pipes whilst maintaining similar thermal and acoustic properties as standard mineral fibre insulation. These properties ensure compliance to water by-laws and building regulations for cold and hot water pipes and heating systems.

In a fire situation the sleeve expands to fill the available space between the pipe and the penetration.

In the case of plastic pipes the sleeve will crush and close off the pipe forming a solid char and preventing the passage of fire and smoke to the adjacent compartment.

Tested on the following pipe sizes to BS 476 part 20 for 2 Hours. LANTAC Building Control Approval. NHBC Type Approval.

Copper 12mm-160mm

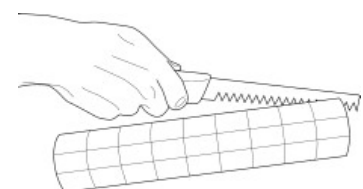
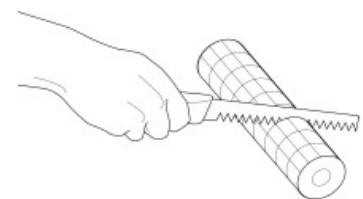
Mild Steel 22mm-160mm

Polybutylene 12mm-28mm

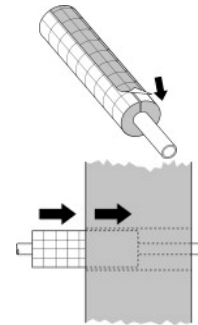
PVC 55mm-160mm

Installation

1. CAREFULLY CUT THERMAL FIRE PIPE SLEEVE TO REQUIRED LENGTH
2. IF NECESSARY MAKE SINGLE SLIT ALONG SLEEVE LENGTH TO ALLOW FITTING AROUND INSTALLED PIPE



3. FIT SLEEVE AROUND PIPE AND RESEAL THE CUT WITH REPAIR TAPE
4. SLIDE SLEEVE ALONG PIPE AND INTO CAVITY AND TAPE SLEEVE TO EXISTING INSULATION IF REQUIRED



Please note: for irregular holes or gaps of greater than 15mm around the pipe sleeve fill with mortar, mastic or similar.

Compliance

FloPlast Pipe Sleeves are manufactured in the EU, meeting the highest quality standard in compliance with ISO EN 9001:2000. For fire test certification contact FloPlast technical department.

Fire Test and Assessment Reports

BS Standard 476 part 20/22 2 hour rated at Chiltern International Fire. 132 minutes integrity and insulation.

Storage and Disposal

For long term storage and ease of installation, it is recommended that the product should be stored indoors. No shelf life is given, as the collars will not deteriorate in storage.

For additional testing, certification or technical information please contact FloPlast Limited.

Issue 09/07

As part of our policy of ongoing improvements, we reserve the right to modify, alter or change product specifications without giving notice. Product illustrations are representations only. All information contained in this document is provided for guidance only, and as FloPlast Limited has no control over the installation methods of the products, or of the prevailing site conditions, no warranties expressed or implied are intended to be given as to the actual performance of the products mentioned or referred to, and no liability whatsoever will be accepted for any loss, damage or injury arising from the use of the information given of products mentioned or referred to herein.

FloPlast Limited. Castle Road, Eurolink Business Park,
Sittingbourne, Kent ME10 3FP
Tel: 01795 431731 Fax: 01795 31188
Email: sales@floplast.co.uk