

Modular Clean Rooms

The brand new Modular Clean Rooms available exclusively from Monmouth Scientific offer a cost-effective solution to create a clean area within an existing room or space.

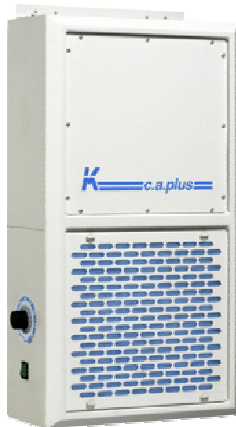
The entire area is constructed from standard elements that can be assembled on site in just a few hours. As each room is entirely bespoke, we can accommodate sizes from 2m² to almost any size imaginable. We can offer the Modular Clean Rooms on a supply only basis or as a fully installed product.

Following construction, we add a wall or ceiling mounted filtration system (positive pressure room air cleaner) to create a HEPA filtered air positive pressure system creating up to a Class 1000 environment.

If necessary, Class 100 environments can then be achieved at the work surface with the addition of a Monmouth Scientific Laminar Airflow Cabinet.



Example shows Module A: 2m x 1.5m enclosure



c.a.plus Wall Mounted Room Air Cleaner
350m³/hr max.



c.a.850plus Wall Mounted Room Air Cleaner
850m³/hr max.

Ceiling Mounted Room Air Cleaner
2500m³/hr max.

All components are manufactured from long lasting and easily cleaned materials to ensure years of uninterrupted service. The construction is lightweight and can easily be dismantled and relocated if required.

With a choice of different size standard elements, a variety of working areas can be constructed. Some typical examples are detailed on the following pages.

Monmouth Scientific

Monmouth Scientific

Unit D4, Bath Bridge Business Park, Bath Road,
Bridgwater, Somerset TA6 4SZ, United Kingdom
Tel: +44 (0)1278 458090 Fax: +44 (0)1278 458091
Email: info@monmouthscientific.co.uk
Monmouth Scientific is a trading division of Monmouth Surgical Ltd.



Modular Clean Room Standard Elements



Product Code: 500mm element - White board
KM:1/2



Product Code: 1000mm element - White board
KM:1



Product Code: 500mm element - 1/2 White board & 1/2 Clear Acrylic
KM:1/2L



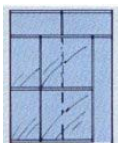
Product Code: 1000mm element - 1/2 White board & 1/2 Clear Acrylic
KM:1L



Product Code: 1000mm hinged door element
KM:SO



Product Code: 1000mm folding door element
KM:PO



Product Code: 1000mm sliding door element
KM:LO



Product Code: c.a.plus Wall Mounted Room Air Cleaner - 350m³/hr max
KM:caplus



Product Code: c.a.850plus Wall Mounted Room Air Cleaner - 850m³/hr max.
KM:ca850plus

Product Code: Ceiling Mounted Room Air Cleaner - 2500m³/hr max.
KM:ca2500

Product Code: 1500mm x 1000mm ceiling element
KM:C1A

Product Code: 2000mm x 1000mm ceiling element
KM:C2A

Special size panels are available upon request

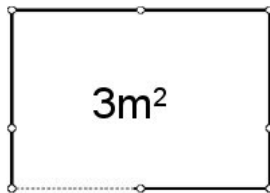
Monmouth Scientific

Monmouth Scientific

Unit D4, Bath Bridge Business Park, Bath Road,
Bridgwater, Somerset TA6 4SZ, United Kingdom
Tel: +44 (0)1278 458090 Fax: +44 (0)1278 458091
Email: info@monmouthscientific.co.uk
Monmouth Scientific is a trading division of Monmouth Surgical Ltd.



Modular Clean Room Examples



Module A – 3m²

Size: 1500mm(d) x 2000mm (w) x 2500mm (h)

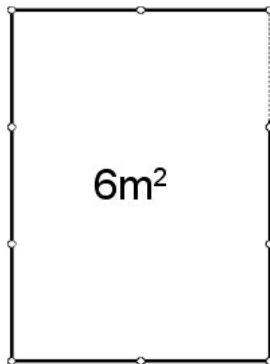
Installed costs from: £4,319 + VAT



Module B – 4.5m²

Size: 1500mm(d) x 3000mm (w) x 2500mm (h)

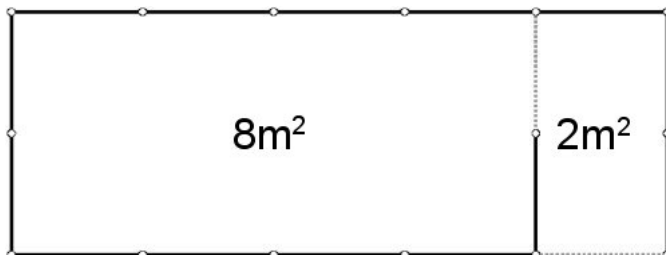
Installed costs from: £5,159 + VAT



Module C – 6m²

Size: 3000mm(d) x 2000mm (w) x 2500mm (h)

Installed costs from: £6,389 + VAT

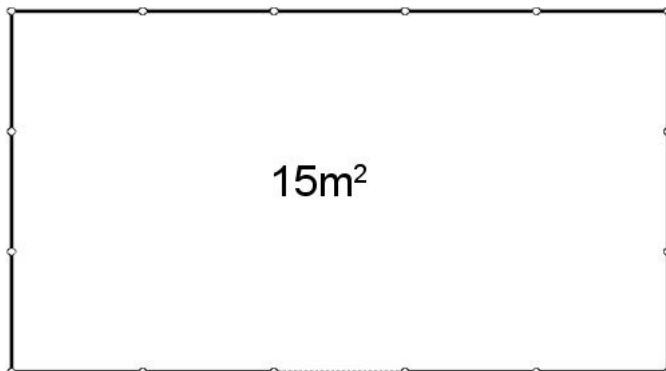


Module D – 8m² + 2m²

Main room with entrance atrium

Size: 1500mm(d) x 2000mm (w) x 2500mm (h)

Installed costs from: £9,683 + VAT



Module E – 15m²

Size: 3000mm(d) x 5000mm (w) x 2500mm (h)

Installed costs from: £11,799 + VAT

Monmouth Scientific

Monmouth Scientific

Unit D4, Bath Bridge Business Park, Bath Road,

Bridgwater, Somerset TA6 4SZ, United Kingdom

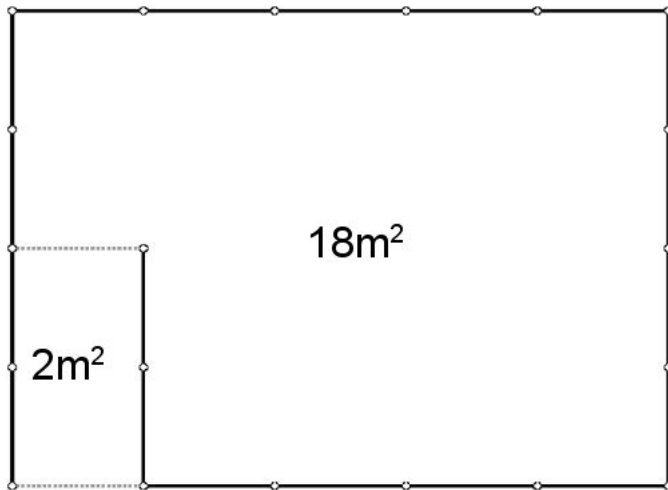
Tel: +44 (0)1278 458090 Fax: +44 (0)1278 458091

Email: info@monmouthscientific.co.uk

Monmouth Scientific is a trading division of Monmouth Surgical Ltd.



Modular Clean Room Examples

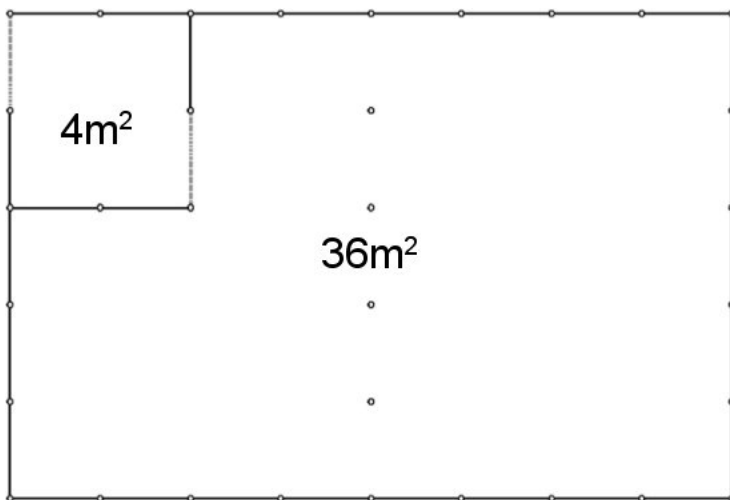


Module F – 18m² + 2m²

Main room with entrance atrium

Size: 5000mm(d) x 4000mm (w) x 2500mm (h)

Installed costs from: £15,258 + VAT



Module G – 36m² + 4m²

Main room with entrance atrium

Size: 5000mm(d) x 8000mm (w) x 2500mm (h)

Installed costs from: £26,408 + VAT

Elements listed are all solid units. Elements can be upgraded to glazed elements for all or part of the installation.

Doors listed are sliding doors. Alternative doors can be provided: e.g. Folding or hinged

Installation excludes any electrical work including provision of lighting or electrical sockets etc.

Installation and delivery assumes mainland UK only within 200 miles of Somerset. Extra costs will be incurred outside of this area.

NB: All modules are quoted at the standard height of 2500mm - Special sizes can be accommodated

Typical Clean Room Installations



Monmouth Scientific

Monmouth Scientific

Unit D4, Bath Bridge Business Park, Bath Road,
Bridgwater, Somerset TA6 4SZ, United Kingdom
Tel: +44 (0)1278 458090 Fax: +44 (0)1278 458091

Email: info@monmouthscientific.co.uk

Monmouth Scientific is a trading division of Monmouth Surgical Ltd.

