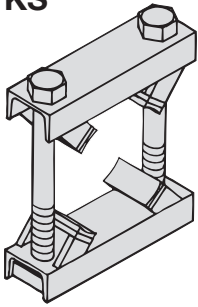
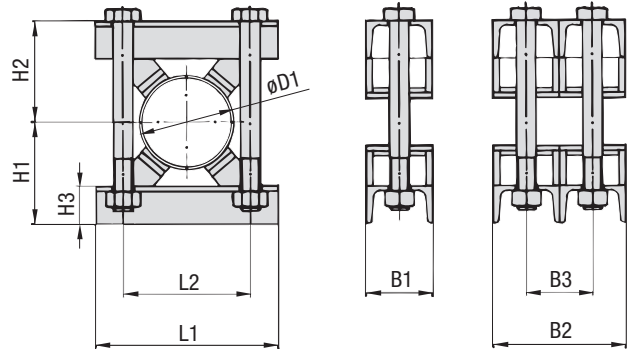
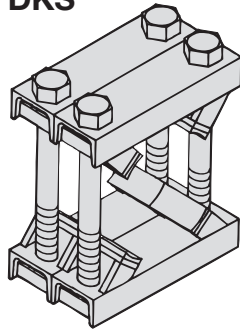


Two-part weld-construction with plastic pads

KS

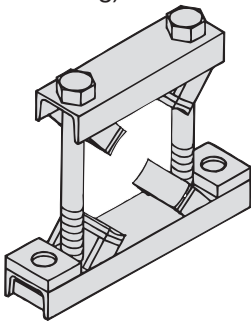


DKS



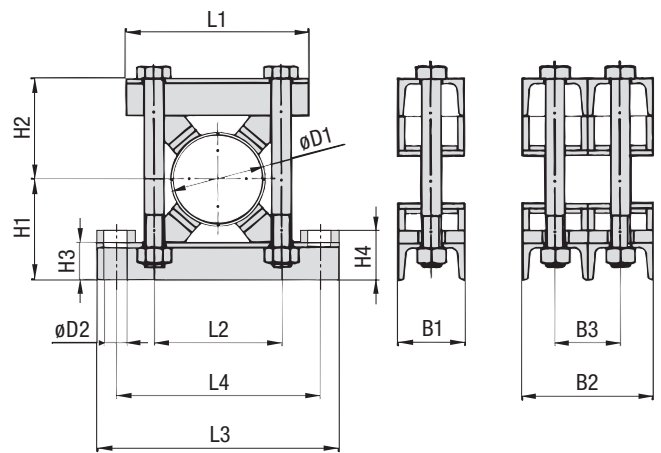
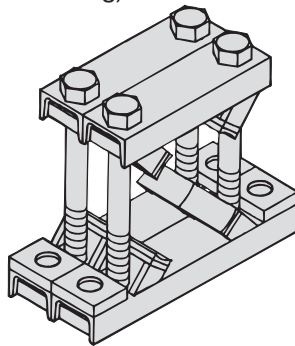
KSV

(for anchor bolt fastening)



DKSV

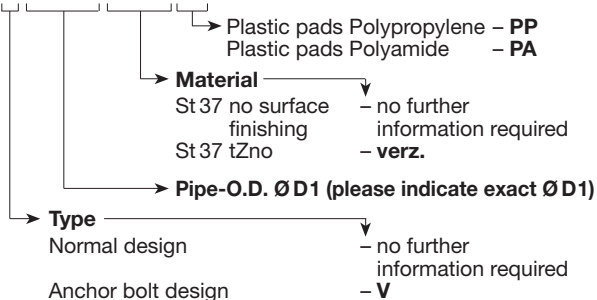
(for anchor bolt fastening)



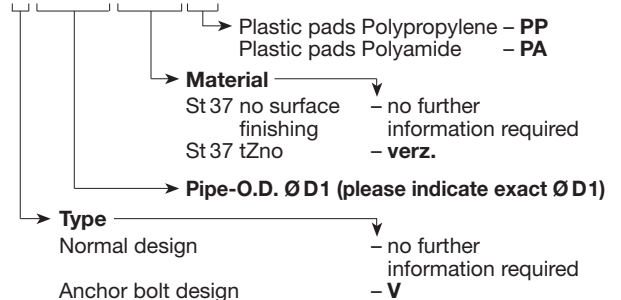
Pipe-O.D. Ø D1	L1	L2	L3	L4	H1	H2	H3	H4	B1	B2	B3	D2	Hexagon Head Bolt	Number of plastic pads
220 bis 275	420	330	580	490	220	220	60	90	140	280	140	35	M30 x 420	4
276 bis 325	460	370	620	530	240	240	60	90	140	280	140	35	M30 x 460	4
326 bis 370	510	420	670	580	260	260	60	90	140	280	140	35	M30 x 500	4
371 bis 425	570	480	750	640	290	290	60	90	140	280	140	35	M30 x 560	4
426 bis 485	620	530	800	730	305	305	60	90	140	280	140	35	M30 x 590	4
486 bis 550	680	590	860	790	370	370	60	90	140	280	140	35	M30 x 720	5
551 bis 630	760	670	940	870	410	410	60	90	140	280	140	35	M30 x 800	5
631 bis 715	845	755	1025	955	452	452	60	90	140	280	140	35	M30 x 884	5
716 bis 800	940	850	1120	1050	495	495	60	90	140	280	140	35	M30 x 970	5

Order Code

KSx ** xxxx xx**



DKSx ** xxxx xx**



Other materials and O.D. on request.