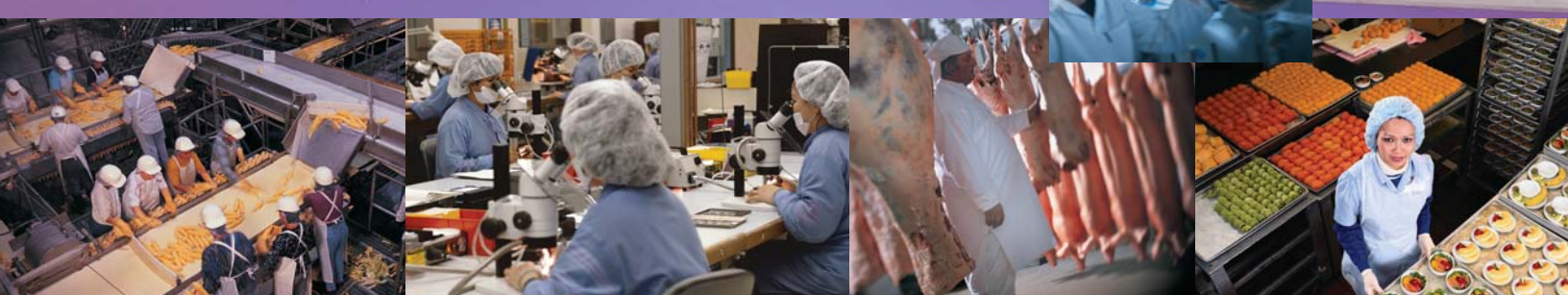


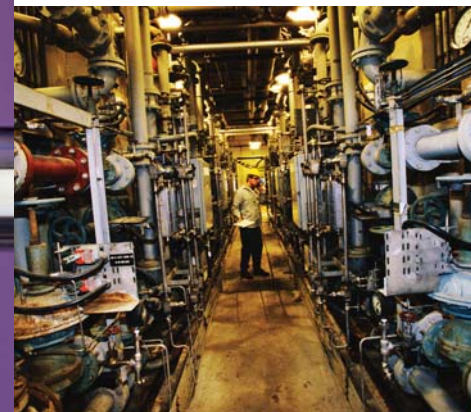
HI-CLEAN™ CLAMPS



Sanitary and Process Pipe Support Systems



HI-CLEAN™ Your Sanitary Processing Solution



Hi-Clean™ is a complete system of suspended pipe and tube supports designed specifically for sanitary processing applications in the process, food and pharmaceutical industries.

Hi-Clean™ construction materials—polypropylene, santoprene, and stainless steel—are all FDA compliant.

Quality Design, Quality Construction

Hi-Clean™ suspended pipe, tube and hose supports are designed and manufactured by Stauff, the world leader in hydraulic clamping systems.

Precision engineered to minimize contamination, Stauff's Hi-Clean™ system allows for the efficient maintenance of a clean operating environment during washdown.

The Best Service

You'll get fast turnaround time on all orders for standard products from inventory in both the USA and Canada.

- Experienced product support staff and the necessary in-house manufacturing capabilities to customize products for a wide variety of customer requirements
- Well trained sales engineers for local product and application advice
- A customer-oriented attitude with excellent warranty and business policies
- New products are introduced consistently to meet industry demands

Trust Stauff for your Hi-Clean™ system and service needs.



HI-CLEAN™ SERIES

Supports: For use with Process, Food and Pharmaceutical Applications

Specifications

- Smooth Clamping Surface for Sanitary, Clean in Place (CIP) Installations
- Body Material
 - Polypropylene (PP-Blue)
 - Santoprene (SA-Natural)
 - UHMW (special order)
- Support Hardware
 - 304 Stainless Steel
 - 316 Stainless Steel (special order)
 - Zinc Plated Carbon Steel (special order)
- Modular Design for Multiple Mounting Configurations
- Santoprene (SA) is FDA Approved
- Hardware Compatible with Standard Series Clamps



Hi-Clean Support Bodies

	GRP	SIZE	O. D.	H	L	POLYPROPYLENE	SANTOPRENE
	3	1/4" T	0.25"	1.40"	1.96"	3064 PPC	3064 SAC
		3/8" T	0.375"			3095 PPC	3095 SAC
		1/2" T	0.50"			3127 PPC	3127 SAC
		3/4" T	0.75"			3190 PPC	3190 SAC
		1/2" P	0.84"			3213 PPC	3213 SAC
		1" T	1.00"			3254 PPC	3254 SAC
	6	1/4" T	0.25"	2.53"	3.38"	6064 PPC	6064 SAC
		1/2" T	0.50"			6127 PPC	6127 SAC
		5/8" T	0.625"			6160 PPC	6160 SAC
		3/4" T	0.75"			6190 PPC	6190 SAC
		1/2" P	0.84"			6213 PPC	6213 SAC
		7/8" T	0.875"			6222 PPC	3222 SAC
		1" T	1.00"			6254 PPC	6254 SAC
		3/4" P	1.05"			6266 PPC	6266 SAC
		1" P	1.315"			6334 PPC	6334 SAC
		1 1/2" T	1.50"			6381 PPC	6381 SAC
		1 1/2" P	1.90"			6483 PPC	6483 SAC
		2" T	2.00"			6508 PPC	6508 SAC
	7L	2" T	2.00"	4.26"	5.04"	7508 LPPC	7508 LSAC
		2" P	2.375"			7603 LPPC	7603 LSAC
		2 1/2" T	2.50"			7635 LPPC	7635 LSAC
		2 1/2" P	2.875"			7730 LPPC	7730 LSAC
		3" T	3.00"			7762 LPPC	7762 LSAC
	8	4" T	4.00"	4.56"	5.75"	8102 PPC	8102 SAC
		9L	6" T			6.00"	7.52"

P = Pipe T = Tube

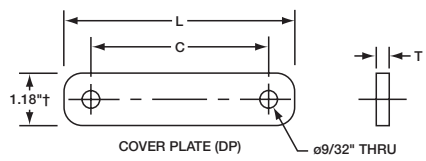
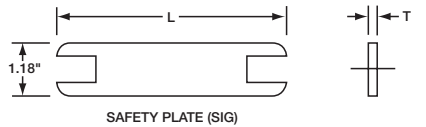
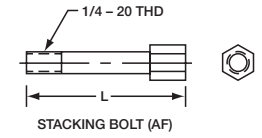
Other sizes and materials available on request.

Hi-Clean Mounting Components

	GROUP	PART #	DIMENSIONS		
			L	C	T
STANDARD WELD PLATE (SP) * SP9L has 3/8-16 UNC Thread † SP9L width is 1.38" For Weld in Place Use	3	SP3-UW4	1.97"	1.30"	0.11"
	6	SP6-UW4	3.48"	2.60"	0.11"
	7L	SP7L-UW4	5.00"	4.25"	0.11"
	8	SP8-UW4	5.75"	4.72"	0.19"
ROUNDED CORNER WELD PLATE (SPR) * SPR9L has 3/8-16 UNC Thread † SPR9L width is 1.38" For Suspension Use	3	SPR3-UW4	1.97"	1.30"	0.11"
	6	SPR6-UW4	3.48"	2.60"	0.11"
	7L	SPR7L-UW4	5.00"	4.25"	0.11"
	8	SPR8-UW4	5.75"	4.72"	0.19"
9L	*	*	*	*	*
BASE PLATE (SPV) For Bolt or Weld in Place	3	SPV3-UW4	3.07"	1.30"	0.11"
	6	SPV6-UW4	4.52"	2.60"	0.11"
	7L	SPV7L-UW4	6.50"	4.25"	0.11"
	8	*	—	—	—
9L	*	—	—	—	
TRANSFER PLATE (TDP) * TDP9L has ø7/16" THRU For Stacking Different Clamp Groups	3/6	TDP3-UW4	3.38"	2.60"	0.20"
	6/7	TDP6-UW4	5.00"	4.25"	0.20"
	7L/3	TDP7L-UW4	5.00"	4.25"	0.20"
	8	*	—	—	—
	9L	*	—	—	—
SWIVEL PLATE (SDP) * SDP9L has ø7/16" THRU For Hanging	3	SDP3-UW4	1.89"	1.30"	0.20"
	6	SDP6-UW4	3.38"	2.60"	0.20"
	7L	SDP7L-UW4	5.00"	4.25"	0.20"
	8	SDP8-UW4	5.75"	4.72"	0.25"
	9L	*	—	—	—
HEX BOLT (ASDP) 	3	ASDP3-UW4	1.50"	1/4"-20 UNC	—
	6	ASDP6-UW4	2.75"	1/4"-20 UNC	—
	7L	ASDP7L-UW4	4.375"	1/4"-20 UNC	—
	8	ASDP8-UW4	4.875"	1/4"-20 UNC	—
	9L	ASDP9L-UW4	8.00"	3/8"-16 UNC	—
HANG PLATE (SHP) For Hanging	3	SHP3-UW4	1.95"	1.30"	0.20"
	6	SHP6-UW4	3.38"	2.60"	0.20"
	7L	SHP7L-UW4	5.00"	4.25"	0.20"
	8	SHP8-UW4	5.75"	4.72"	0.25"
	9L	*	—	—	—

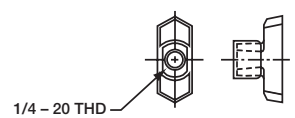

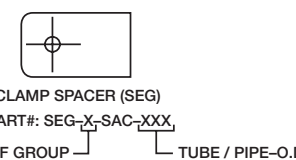
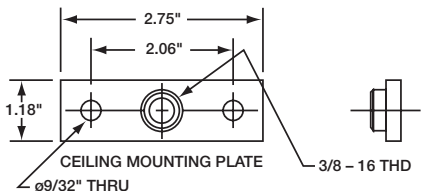
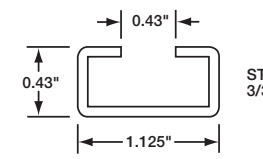
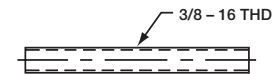
* Consult factory

Hi-Clean Mounting Components

	GROUP	PART #	DIMENSIONS		
			L	C	T
COVER PLATE (DP) * DP9L has $\varnothing 7/16"$ THRU † DP9L width is 1.38" 	3	DP3-W4	1.89"	1.30"	0.11"
	6	DP6-W4	3.38"	2.60"	0.11"
	7L	DP7L-W4	5.00"	4.25"	0.11"
	8	DP8-W4	5.67"	4.72"	0.19"
	9L	DP9L-W4	8.75"	7.67"	0.16"
SAFETY PLATE (SIG) 	3	SIG3-W4	1.85"	—	0.03"
	6	SIG6-W4	3.34"	—	0.03"
	7L	SIG7L-W4	5.00"	—	0.03"
	8	*	—	—	0.03"
	9L	*	—	—	—
STACKING BOLT (AF) 	3	AF3-UW4	1.73"	—	—
	6	AF6-UW4	2.91"	—	—
	7L	AF7L-UW4	4.57"	—	—
	8	*	—	—	—
	9L	*	—	—	—

* Consult factory

Accessories for Hi-Clean Support Installation

 HEXAGON RAIL NUT PART#: SM1-8/1D-UW4 * Group 3-8 only	 HEX LOCK NUT PART#: SLN-UW4	 CLAMP SPACER (SEG) PART#: SEG-X-SAC-XXX Use For "Sliding" Installations
 CEILING MOUNTING PLATE PART#: SCP-UW4	 MOUNTING RAIL PART#: TS11-1-W4 (3.3') PART#: TS11-2-W4 (6.6')	 THREADED ROD STANDARD LENGTH 6 FT SPECIAL LENGTHS MADE TO ORDER PART#: THR-6-UW4

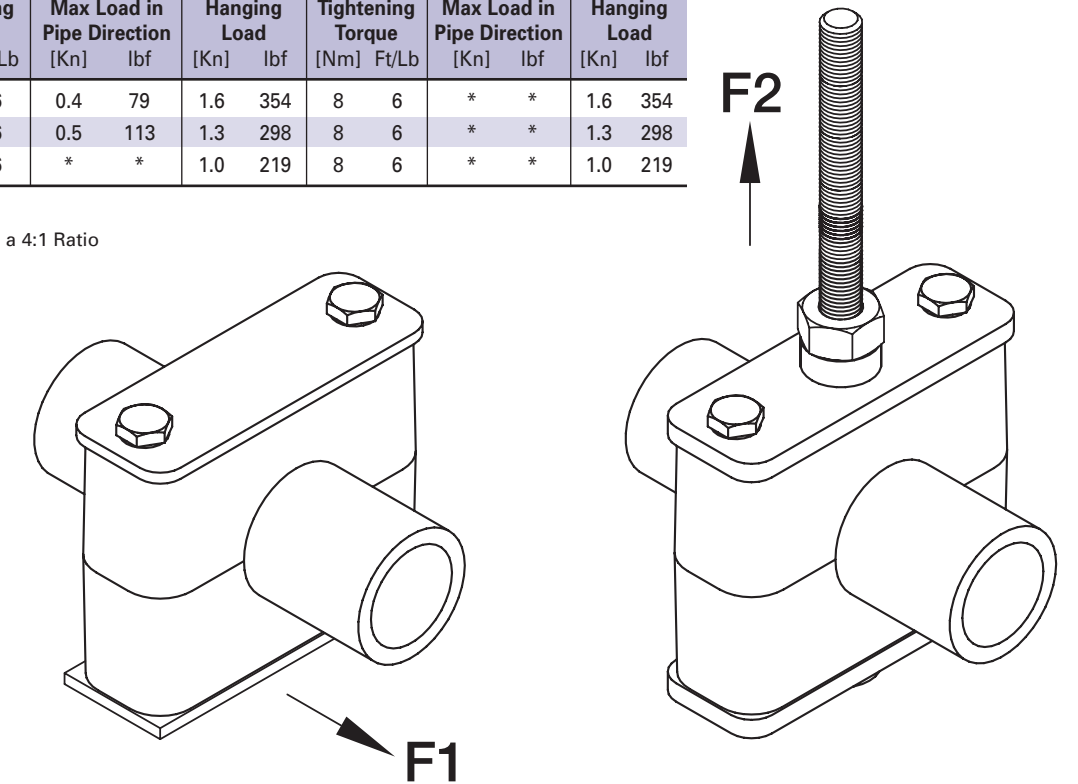
Technical Data

Hi-Clean Clamps Maximum Load in Pipe Direction (F1) Hanging Load Rating for Hang Plate / Swivel Plate Assemblies (F2)

STAUFF Group	Hexagon Hex Bolt	Polypropylene				Santoprene							
		Tightening Torque [Nm]	Tightening Torque Ft/Lb	Max Load in Pipe Direction [Kn]	Max Load in Pipe Direction lbf	Hanging Load [Kn]	Hanging Load lbf	Tightening Torque [Nm]	Tightening Torque Ft/Lb	Max Load in Pipe Direction [Kn]	Max Load in Pipe Direction lbf	Hanging Load [Kn]	Hanging Load lbf
3	1/4"-20UNC	8	6	0.4	79	1.6	354	8	6	*	*	1.6	354
6	1/4"-20UNC	8	6	0.5	113	1.3	298	8	6	*	*	1.3	298
7L	1/4"-20UNC	8	6	*	*	1.0	219	8	6	*	*	1.0	219

* Consult Factory

Safety Factor for Hanging Loads is a 4:1 Ratio



Technical Notes

Properties of Clamp Body Materials

MATERIAL PROPERTIES	POLYPROPYLENE PP Color: Blue	SANTOPRENE SA Color: Natural
MECHANICAL PROPERTIES		
Flexural Deflection	36 N/mm ²	
Impact Resistance	no failure	
Compressive Strength	90 N/mm ²	Hardness: 50° Shore D
Modulus of Elasticity	1150 N/mm ²	10 N/mm ²
Tensile Stress	28 N/mm ²	27.6 N/mm ²
THERMAL PROPERTIES		
Maximum Temperature	-22° to +215° F	-40° to +425° F
- Brief Exposure	-30° to +102° C	-40° to +218° C
Operating Temperature	-22° to +194° F	-40° to +210° F
- Continuous Exposure	-30° to +90° C	-40° to +99° C
CHEMICAL PROPERTIES		
Weak Acids, Solvents	conditionally consistent	conditionally consistent
Benzine, Mineral Oils	conditionally consistent	conditionally consistent
Alcohol, Other Oils, Seawater	consistent	consistent

Contact factory for further information.

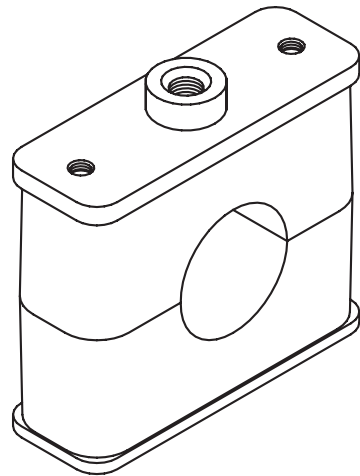
Ordering Examples



**RESPONSE AND FLEXIBILITY • COMPETENT SERVICE
• PROMPT DELIVERY • ENSURED QUALITY • FRIENDLY
SERVICE • PROVEN IN PRACTICE**

Hi-Clean Assembly Hang Plate / Cover Plate Style

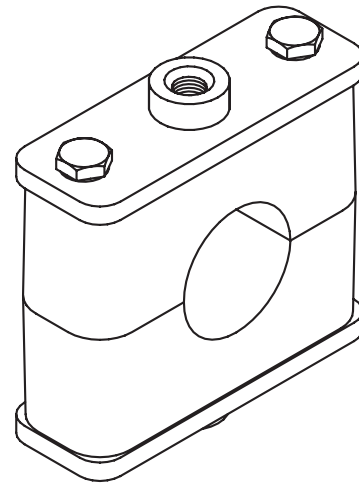
SHP X, XXX, XXC, DPAS U W4
 STAUFF GROUP
 TUBE / PIPE-O.D.
 MATERIAL OF CLAMP BODY



Clamp Consisting of:
 1x Hang Plate
 1x Clamp Body
 (2 Halves)
 1x Cover Plate
 2x Hex Head Bolt

Hi-Clean Assembly Hang Plate / Swivel Plate Style

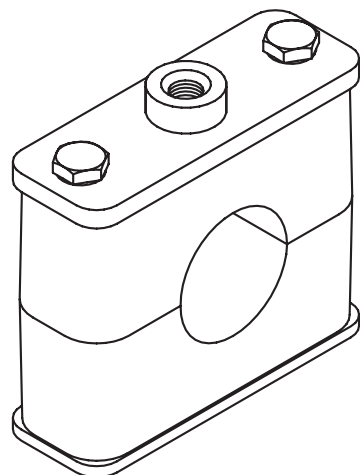
SHP X, XXX, XXC, SDPAS U W4
 STAUFF GROUP
 TUBE / PIPE-O.D.
 MATERIAL OF CLAMP BODY



Clamp Consisting of:
 1x Hang Plate
 1x Clamp Body
 (2 Halves)
 1x Swivel Plate
 2x Hex Head Bolt

Hi-Clean Assembly Rounded Weld Plate / Swivel Plate Style

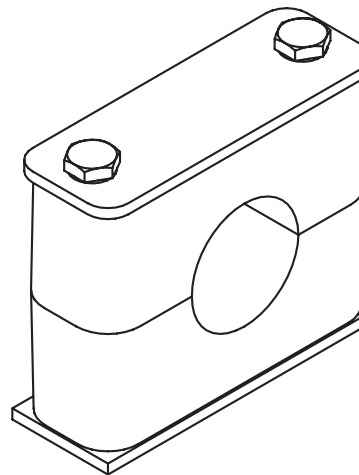
SPR X, XXX, XXC, SDPAS U W4
 STAUFF GROUP
 TUBE / PIPE-O.D.
 MATERIAL OF CLAMP BODY



Clamp Consisting of:
 1x Rounded Weld Plate
 1x Clamp Body
 (2 Halves)
 1x Swivel Plate
 2x Hex Head Bolt

Hi-Clean Assembly Weld Plate / Cover Plate Style

SP X, XXX, XXC, DPAS U W4
 STAUFF GROUP
 TUBE / PIPE-O.D.
 MATERIAL OF CLAMP BODY



Clamp Consisting of:
 1x Weld Plate
 1x Clamp Body
 (2 Halves)
 1x Cover Plate
 2x Hex Head Bolt

AUSTRALIA

STAUFF Corporation Pty. Ltd.
 P. O. Box 227
 Unanderra Wollongong, NSW, 2526
 24-26 Doyle Avenue
 Unanderra Wollongong, NSW, 2526
 Tel.: +61 2 4271 18 77
 Fax: +61 2 4271 84 32

BRAZIL

STAUFF Brasil Ltda.
 Avenida Gupê 10767
 Galpão 2 - Bloco A
 Barueri - São Paulo
 CEP 06422-120
 Tel.: +55 11 47 72 72 00
 Fax: +55 11 47 72 72 10

CHINA

STAUFF Intern.Trading Co., Ltd.
 Shangdian Mansion, Pudong
 331, Binzhou Road
 200126 Shanghai
 Tel.: +86 21 58 45 65 60
 Fax: +86 21 58 45 66 80

FRANCE

STAUFF S.A.
 230, Avenue du Grain d'Or
 Z.I. de Vineuil - Blois Sud
 41354 Vineuil-cedex
 Tel.: +33 2 54 50 55 50
 Fax: +33 2 54 42 29 19

GERMANY

Walter Stauffenberg GmbH & Co. KG
 Postfach 1745
 58777 Werdohl
 Im Ehrenfeld 4
 58791 Werdohl
 Tel.: +49 23 92 916-0
 Fax: +49 23 92 2505

INDIA

STAUFF India Pvt. Ltd.
 Gat. No. 2340
 Pune Nagar Road, Wagholi
 Pune, 412207
 Tel.: +91 202 705 19 90
 Fax: +91 202 705 19 89

GLOBALLY AVAILABLE THROUGH DISTRIBUTORS IN ALL INDUSTRIAL COUNTRIES.

UNITED STATES OF AMERICA

STAUFF Corporation
 7 Wm. Demarest Place
 Waldwick, New Jersey 07463-1542
 Tel.: +1 201 444 7800
 Fax: +1 201 444 7852
www.stauffusa.com
sales@stauffusa.com

CANADA

STAUFF Canada Ltd.
 866 Milner Avenue
 Scarborough
 Ontario M1B 5N7
 Tel.: +1 416 282 4608
 Fax: +1 416 282 3039
www.stauffcanada.com
sales@stauffcanada.com

YOUR LOCAL DISTRIBUTOR: