



Area of Application:

Visual fluid level indication in hydraulic reservoirs

Characteristics:

- suitable for hydraulic oil HL, HLP, gasoline up to 80°C max, and diesel fuels up to 60°C max
- option available with dial thermometer with probe or thermo switch (Page 6)
- UV-resistant

Please consult our office before you use SNA with other fluids such as biological oils. Special requirements on request.

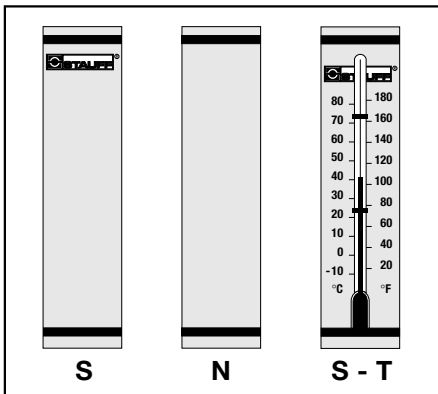
Technical Data:

Temperature range: -20°C ... +80°C
 Calibration of capillary tube thermometer:
 SNA 076 +20°C ... +80°C
 SNA 127/176/254 -10°C ... +80°C
 Calibration of dial thermometer with probe:
 0°C ... +100°C
 Tank pressure: 1 bar max
 Recommended tightening torque: 8 Nm

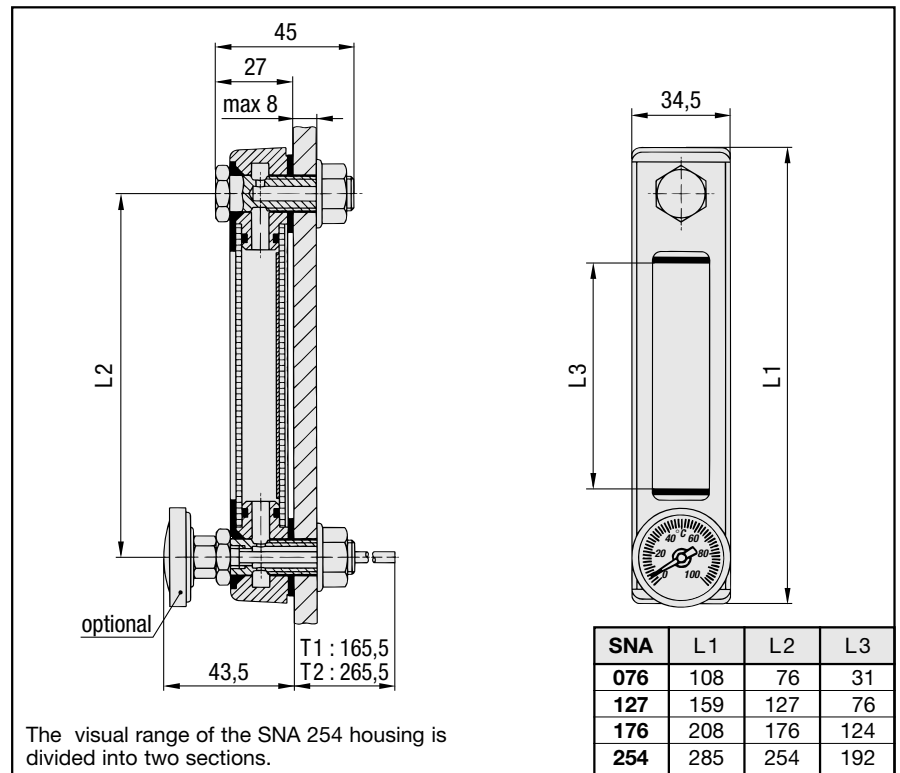
Materials:

Housing: St 12 (black epoxy)
 Plugs, Sight tube: PA
 Scale Plates: PVC

Design of scale plates



Dimensions



The visual range of the SNA 254 housing is divided into two sections.

Ordering Code

SNA 127 B - S - T1 - 12 - O60

Type		Thermo Switch for size M12 only	
SNA		(none)	without thermo switch
Series		O60	TS-SNA/SNK-O-60
076	SNA 076	O70	TS-SNA/SNK-O-70
127	SNA 127	O80	TS-SNA/SNK-O-80
176	SNA 176	Banjo bolts	
254	SNA 254	12	M12 (standard)
Seal material		10	M10
B	NBR (standard)	Thermometer	
V	FPM	Dial thermometer with probe T1/T2 for size M12 only	
Design of scale plate		O	without thermometer
S	with STAUFF-Logo	T	Capillary tube thermometer on scale plate
N	neutral	T1	Dial thermometer with 200 mm probe
X	Special executions	T2	Dial thermometer with 300 mm probe



Area of Application:

Visual / electrical fluid level indication in hydraulic reservoirs

Characteristics:

- suitable for hydraulic oil HL, HLP, gasoline up to 80°C max, and diesel fuels up to 60°C max
- option available with dial thermometer with probe or thermo switch (Page 6)
- UV-resistant
- available either as a break contact (Type O) or make contact (Type C)

Please consult our office before you use SNA with other fluids such as biological oils. Special requirement on request.

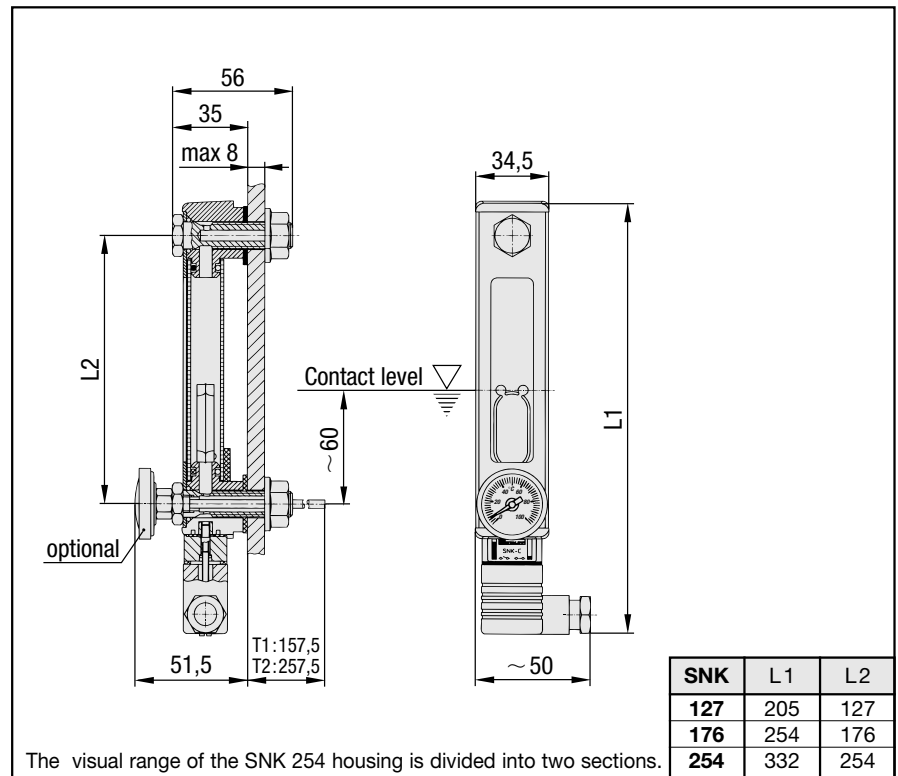
Technical Data:

Temperature range: -20°C ... +80°C
 Calibration of dial thermometer with probe:
 0°C ... +100°C
 Tank pressure: 1 bar max
 Recommended tightening torque: 8 Nm
 Please allow a minimum spacing of 10 mm between other components.

Materials:

Housing: AL (plastic coated)
 Plugs, Sight tube: PA
 Float: PA

Dimensions



Electrical Connections and Functions

Contact load:
 max 10 W (Type C)
 max 3 W (Type O)
 Bias-reducing Potential:
 50 V AC/DC
 Current on Contact:
 max 0,50 A (Type C)
 max 0,25 A (Type O)
 Electrical switch PG9
 Protection IP 65
 Connection 3 is not engaged

Type C

Type O

Type C

Type O

Ordering Code

When assembling the electrical contacts the orientation of the electrical switch (right or left hand side) can be chosen according to the requirements.

SNK 127 V - C - T1 - 12 - O60

Type SNK		Thermo Switch for size M12 only	
Series		(none) without thermo switch	
127	SNK 127	O60	TS-SNA/SNK-O-60
176	SNK 176	O70	TS-SNA/SNK-O-70
254	SNK 254	O80	TS-SNA/SNK-O-80
Seal material		Banjo bolts	
V	FPM (standard)	12	M12 (standard)
Electrical function		10	M10
C	Make contact, closes at minimum level (n/o)	Thermometer	
O	Break contact, opens at minimum level (n/c)	Dial thermometer with probe T1/T2	
		for size M12 only	
		O	without thermometer
		T1	Dial thermometer with 200 mm probe
		T2	Dial thermometer with 300 mm probe



Area of Application:

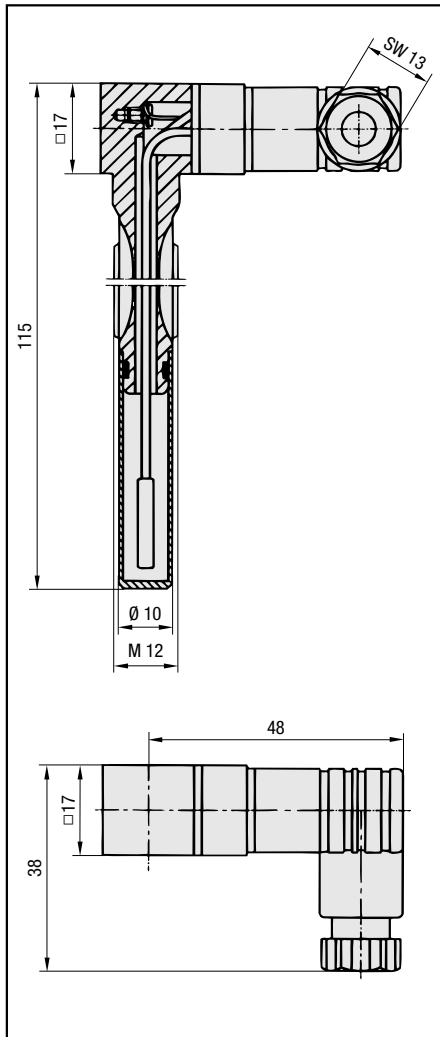
Oil temperature indication in conjunction with STAUFF level gauges SNA and SNK

Characteristics / Materials:

- available with 60°C, 70°C or 80°C switching temperature
- Activation takes place when the respective switching temperature is exceeded.
- Electrical function: break contact
- Steel parts made out of 1.0718
- Plastic parts made out of glass fibre reinforced polyamide

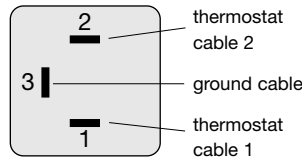
Thermo switches are available for the standard mounting size M12 only.

Dimensions



Technical Data (Break contact):

Switching temperature: see ordering code
 Hysteresis: 20° C
 Switching temperature tolerance: ± 5°C.



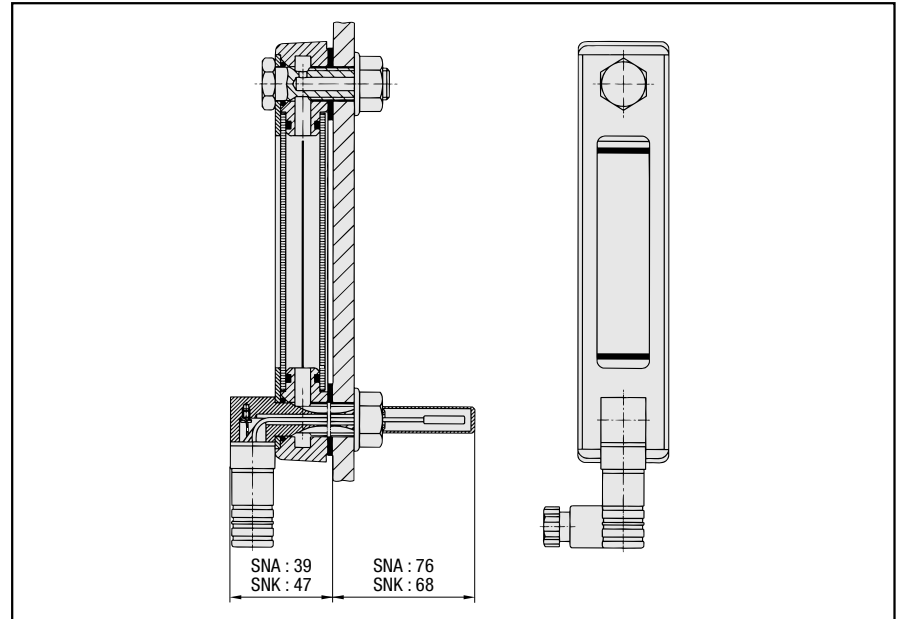
Alternating current

- max voltage 250 V
- max current at 10.000 circuits
 - 2,5 A at cos φ = 1,0
 - 1,6 A at cos φ = 0,6
- max current at 100.000 circuits
 - 0,5 A at cos φ = 1,0
 - ≈ 0,25 A at cos φ = 0,6
- min voltage 50 mA

Direct current

- max voltage 42 V
- max current at 10.000 circuits 1 A

Example of application



Ordering Code and Temperature Range

TS - SNA / SNK - O - 60	
Type	Switching temperature
TS Thermo Switch	60 60°C / 140°F
Series	70 70°C / 158°F
SNA / SNK	80 80°C / 176°F
Electrical function	
O Break Contact (n/c)	

Thermo switches can be ordered both as a single component and in combination with STAUFF level gauges SNA and SNK. See pages 4 and 5.



Area of Application:

Electrical level and temperature indication

Characteristics:

- suitable for mineral oil and HFC fluids
- either 1 or 2 level contacts available
- 1 integrated temperature sensor
- standard electrical function:
 Level contacts: normally closed, opens with falling level
 Temperature contact: normally closed, opens with rising temperature

STAUFF Level-Temperature switches SLTS are available with other electrical functions on request.

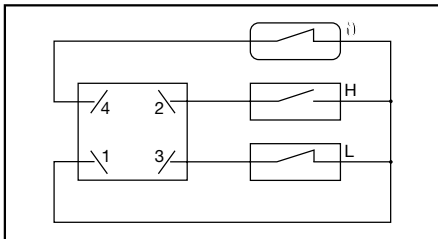
Technical Data

Stem:	Brass
Float:	NBR
max operating temperature:	80°C
max operating voltage:	48 V
max current (level contact):	0,5 A
max current (temperature contact):	2,0 A
contact load level contact:	10 VA
system of protection:	IP65
Hysteresis:	12°C

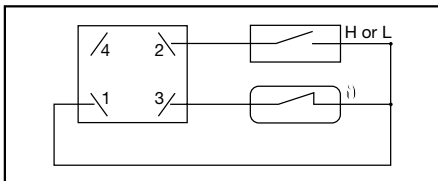
Level contact positions (L, H) are set as given in the chart. They can be adjusted individually lateron.

Please consider a minimum distance of 40 mm between the switching points.

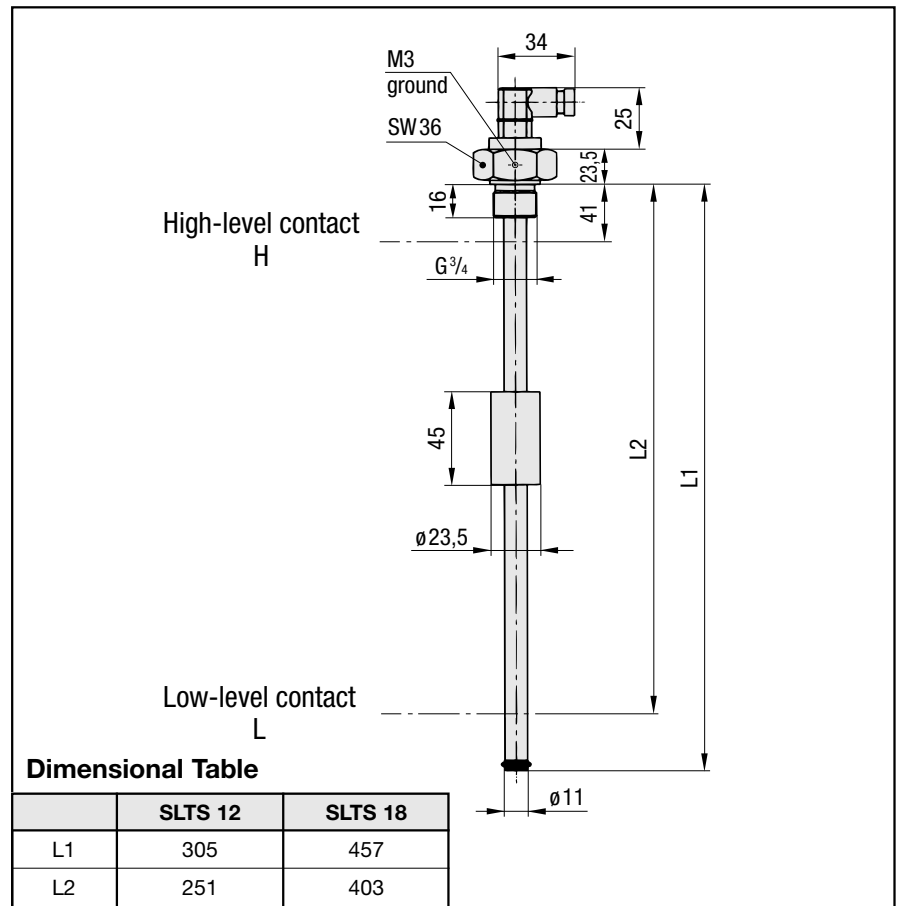
Wiring Scheme for type 2LH



Wiring Scheme for type 1L or 1H



Dimensions



Dimensional Table

	SLTS 12	SLTS 18
L1	305	457
L2	251	403

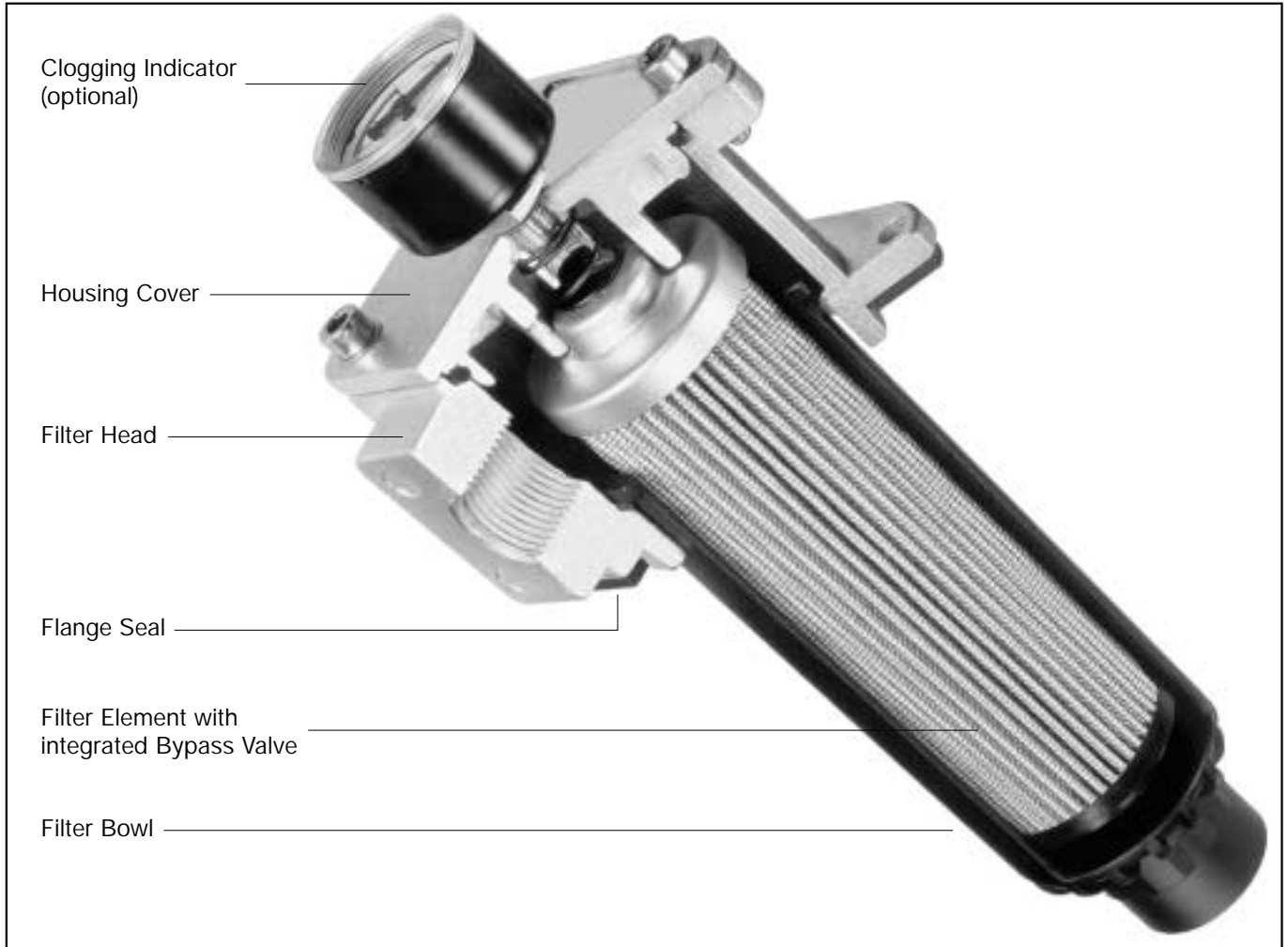
Ordering Code

SLTS 12 - 140 - 2LH - B12 - G048

<table border="1" style="width: 100%; border-collapse: collapse;"> <tr> <th colspan="2">Type</th> </tr> <tr> <td style="width: 10%;">SLTS</td> <td>Level-temperature switch</td> </tr> </table> <table border="1" style="width: 100%; border-collapse: collapse;"> <tr> <th colspan="2">Stem Length</th> </tr> <tr> <td style="width: 10%;">12</td> <td>305 mm</td> </tr> <tr> <td>18</td> <td>457 mm</td> </tr> </table> <table border="1" style="width: 100%; border-collapse: collapse;"> <tr> <th colspan="2">Switching temperature</th> </tr> <tr> <td style="width: 10%;">140</td> <td>60°C / 140°F</td> </tr> <tr> <td>158</td> <td>70°C / 158°F</td> </tr> <tr> <td>O</td> <td>without temperature switch</td> </tr> </table>	Type		SLTS	Level-temperature switch	Stem Length		12	305 mm	18	457 mm	Switching temperature		140	60°C / 140°F	158	70°C / 158°F	O	without temperature switch	<table border="1" style="width: 100%; border-collapse: collapse;"> <tr> <th colspan="2">Voltage</th> </tr> <tr> <td style="width: 10%;">G048</td> <td>48 Volt max (standard)</td> </tr> <tr> <td>G115</td> <td>115 Volt max (for thread N16 only)</td> </tr> </table> <table border="1" style="width: 100%; border-collapse: collapse;"> <tr> <th colspan="2">Thread</th> </tr> <tr> <td style="width: 10%;">B12</td> <td>G 3/4 (standard)</td> </tr> <tr> <td>N16</td> <td>1 NPT (only on request)</td> </tr> </table>	Voltage		G048	48 Volt max (standard)	G115	115 Volt max (for thread N16 only)	Thread		B12	G 3/4 (standard)	N16	1 NPT (only on request)	<table border="1" style="width: 100%; border-collapse: collapse;"> <tr> <th colspan="2">Number of level switches</th> </tr> <tr> <td style="width: 10%;">1</td> <td>1 level switch (L, H)*</td> </tr> <tr> <td>2</td> <td>2 level switch (LH)*</td> </tr> </table> <p style="font-size: small;">* please indicate level position(s): L = low, H = high</p>	Number of level switches		1	1 level switch (L, H)*	2	2 level switch (LH)*
Type																																						
SLTS	Level-temperature switch																																					
Stem Length																																						
12	305 mm																																					
18	457 mm																																					
Switching temperature																																						
140	60°C / 140°F																																					
158	70°C / 158°F																																					
O	without temperature switch																																					
Voltage																																						
G048	48 Volt max (standard)																																					
G115	115 Volt max (for thread N16 only)																																					
Thread																																						
B12	G 3/4 (standard)																																					
N16	1 NPT (only on request)																																					
Number of level switches																																						
1	1 level switch (L, H)*																																					
2	2 level switch (LH)*																																					

Technical Data

STAUFF RF return line filters are designed as tank top filters. They are mounted directly on the tank top and if 100% of the system oil is filtered, they provide the optimum removal of contaminant from the system. This provides the pump with clean oil thus reducing contaminant generated wear. The filter bowl or funnel is designed to return the oil beneath the surface thus preventing the entrainment of air by the returning oil.



Technical Specification

Construction	Tank Top flange mounting
Filter head	Aluminium
Filter bowl	Steel
Seals	NBR (Perbunan), FPM (Viton) or EPDM (Ethylene-Propylene)
Threaded connection	BSP, NPT- and SAE-"O"-Ring thread as well as SAE-flange (3000 psi)
max. Operating press.	16 bar
Proof pressure	24 bar
Temperature Range	-10 up to +100°C
Bypass valve (integrated in the filter element)	Opening pressure 3 bar ± 0,3 bar other pressures on request

Clogging indicator	Gauge type indicator 0...4 bar coloured segments; Electrical switch, setting 2,5 bar
Filter elements	Specification see page 12.
Media	Mineral oils, other fluids on request

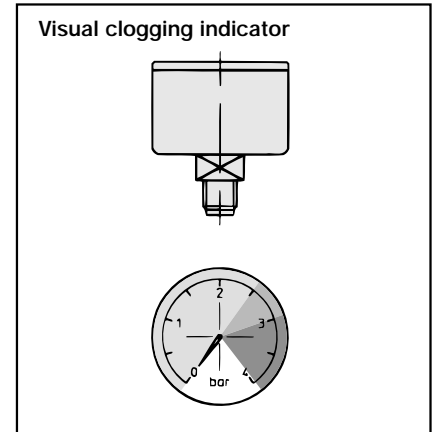
Options

1. Visual clogging indicator

The gauge visually displays the degree of contamination of the element. The coloured segments allow quick visual checking.

green	0...2,5 bar	element has service life left
yellow	2,5...3,0 bar	element is contaminated and should be changed
red	> 3,0 bar	bypass valve open, unfiltered oil passing to tank

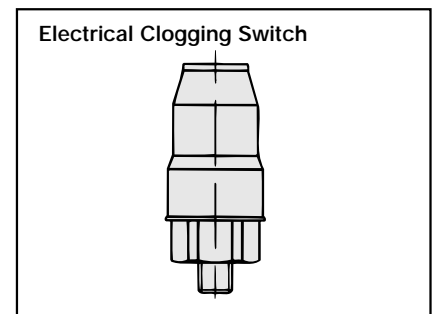
The clogging indicator can be mounted on the top or on the side of the filter head (see drawing on page 10).



2. Electrical clogging switch

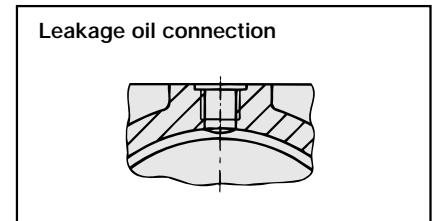
The switch is used where an electrical signal is needed to indicate when the element needs changing. The switch can turn on a light, or shut the machine down, or any other function controlled by an electric signal. The switching pressure is 2,5 bar and this allows the element to be changed before the bypass setting of 3 bar is reached.

Maximum Voltage	Max. Current	Switch Type
42 V		G 42
110 V		G 110
220 V		G 220



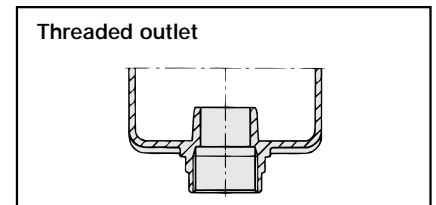
3. Leakage oil connection

Seal or case drain lines can be connected to the filter through either of the clogging indicator ports providing that the leakage oil can accept a pressure of 3 bar. It ensures that no un-filtered oil can return to the reservoir. It may save the cost of a manifold.



4. Filter bowl with threaded connection

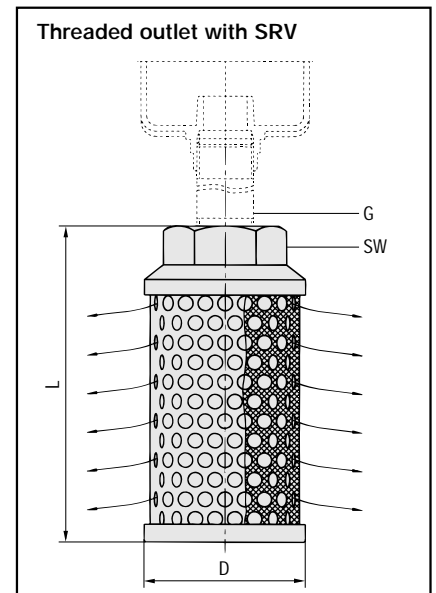
Under some circumstances such as a tall reservoir or one with oil levels which vary greatly during operation, it is necessary to extend the filter bowl so that the returning oil returns beneath the surface and does not entrain air in the process. The optional bowl with a female thread allows an extension to be fitted quite simply.



5. Filter bowl with threaded connection and diffuser

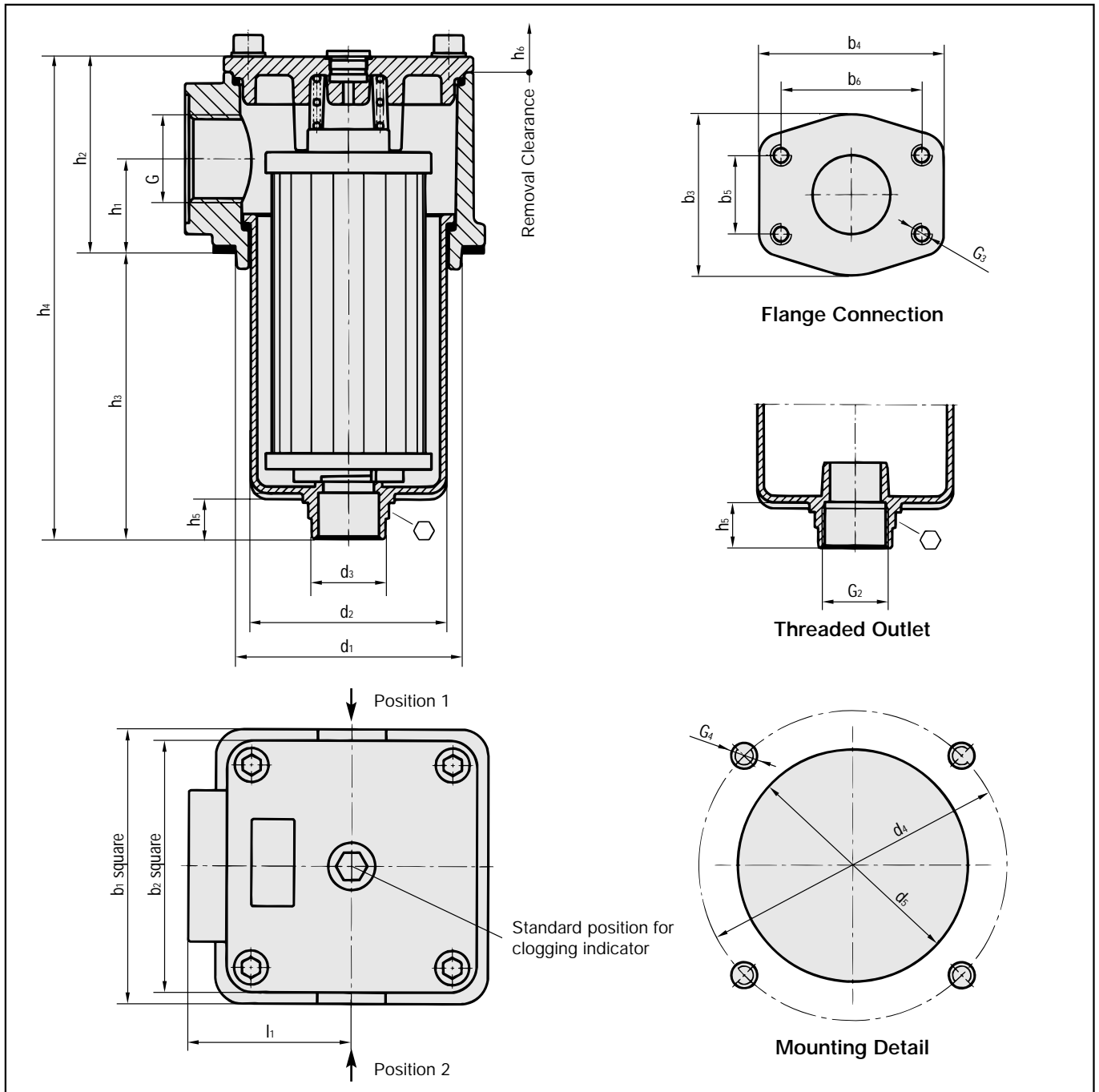
Diffusers mounted to the filter bowl minimize foaming and reduce noise of backstreaming fluids. For further details on STAUFF diffusers please refer to our catalogue "Hydraulic Accessories".

N. B.: Adaption tubes are not included in the range of items delivered!



Size SRV	Dimensions			
	ø D	L	Thread G	SW
for RF 014/030	60	139	G 1	46
for RF 045/070	82	200	G 1 1/4	60
for RF 090/130	82	200	G 1 1/2	60

Dimensions



Dimensions Return Line Filters

Filter Size	Thread connection G				Dimensions																					
	BSP	NPT	SAE-"O" Ring thread	SAE- flange 3000 psi	b ₁	b ₂	b ₃	b ₄	b ₅	b ₆	d ₁	d ₂	d ₃	d ₄	d ₅	h ₁	h ₂	h ₃	h ₄	h ₅	h ₆	l ₁	G ₂	G ₃	G ₄	
RF 014	G 3/4	3/4"	1 1/16-12 UN	-	89	80					73	57,5	36	100	78	33	66	91,5	157,5	23,5	140	48	G 1			M 6
RF 030	G 1	1"	1 5/16-12 UN	-														159,5	225,5		210					
RF 045	G 1 1/4	1 1/4"	1 5/8-12 UN	-	120	110					100	84	48	135	105	41	86	119	206	24	180	66	G 1 1/4			M 8
RF 070	G 1 1/2	1 1/2"	1 7/8-12 UN	-														180	267		240					
RF 090	G 2	2"	1 7/8-12 UN	2"	150	135	88	102	42,9	77,8	126	112,5	54,5	170	131	47	98	172,5	273,5	27	235	85	G 1 1/2	1/2 UNC 15 deep		M 10
RF 130	G 2	2"	1 7/8-12 UN	2"														252,5	353,5		315					

Ordering Code Filter Housings

RF 090 ... B / B M2 G L1

Filter type	RF		
Group			
Size	Flow		
	l/min	GPM	
014	60	14	
030	110	30	
045	160	45	
070	240	70	
090	330	90	
130	500	130	
for complete filters:			
identification filter material + micron rating code (see ordering code filter elements below)			
Seal material			
B	NBR		
V	FPM		
E	EPDM		
other seal material on request			

Additional Features		Pos.*	
L	Leakage oil connection	1	2
*) position of leakage oil connection see page 10 without any code: assembly in the middle of the filter cover			

Outlet Style	
O	Standard outlet (without thread)
G	Filter bowl with threaded outlet

Clogging indicator see page 10		Pos.*	
M	Pressure gauge	1	2
G 42	Electrical switch 42 V		
G 110	Electrical switch 110 V		
G 220	Electrical switch 220 V		
*) position of clogging indicator see page 11 without any code: assembly in the middle of the filter cover			

Connection style		Group					
Code	Connection style	014	030	045	070	090	130
B	BSP	G ³ / ₄	G1	G1 ¹ / ₄	G1 ¹ / ₂	G2	G2
B 1	BSP	G ¹ / ₂	G ¹ / ₂	G1 ¹ / ₂	G1 ¹ / ₄	G1 ¹ / ₄	G1 ¹ / ₄
B 2	BSP	G1	G ³ / ₄	–	–	G1 ¹ / ₂	G1 ¹ / ₂
N	NPT	³ / ₄ "	1"	1 ¹ / ₄ "	1 ¹ / ₂ "	2"	2"
N 1	NPT	1"	³ / ₄ "	1 ¹ / ₂ "	1 ¹ / ₄ "	1 ¹ / ₂ "	1 ¹ / ₂ "
U	SAE-"O"-Ring thread	1 ¹ / ₁₆	1 ⁵ / ₁₆	1 ⁵ / ₈	1 ⁷ / ₈	1 ⁷ / ₈	1 ⁷ / ₈
U 1	SAE-"O"-Ring thread	1 ⁵ / ₁₆	1 ¹ / ₁₆	1 ⁷ / ₈	1 ⁵ / ₈	1 ⁵ / ₈	1 ⁵ / ₈
F	SAE-flange (3000 psi)	–	–	–	–	2"	2"
Flanges do not belong to the scope of supply!							

Ordering Code Filter Elements

RE 090 G 10 B

Series	RE		
Group			
according to filter housing			
Filter material			Micron ratings available
Code	Material	max. Δp*	
A	Stainless fiber	30 bar	03, 05, 10, 20
N, D	Paper	16 bar	
G, E	Inorganic glass fiber	30 bar	
S, B	Stainless mesh	30 bar	25, 40, 60, 100
*) collapse / burst resistance as per ISO 2941			

Seal material	
B	NBR
V	FPM
E	EPDM
other seal materials on request	

Micron rating	
03	3 µm
05	5 µm
10	10 µm
20	20 µm
25	25 µm
40	40 µm
60	60 µm
100	100 µm
other micron ratings on request	



Area of Application: Fluid control and flow shut off

- DV: in both directions
- DRV: in direction A-B (free flow in reverse direction)

Characteristics / Materials:

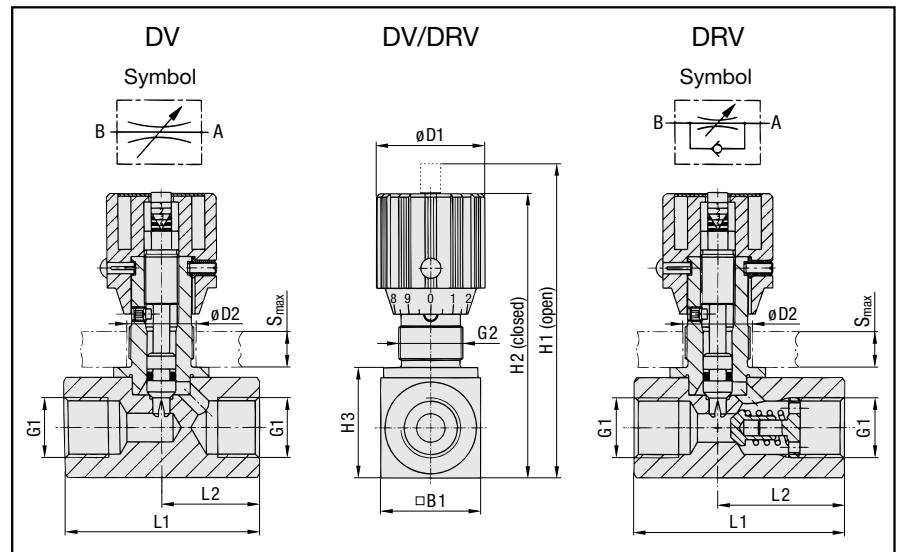
- designed for in-line mounting
- suitable for mineral oil
- Nuts for panel-mounting are available on request
- Housing: Steel (1.0715), zinc plated (Fe/Zn 8 C)
- Turning knob: Polyamide; aluminium or steel available on request

Please consult our office before using with other fluids, or for special stainless steel material.

Technical Data:

max Working Pressure p_N : 350 bar
Temperature t_{max} : 100°C
Opening Pressure DRV:
0,5 bar (4,5 bar on request)

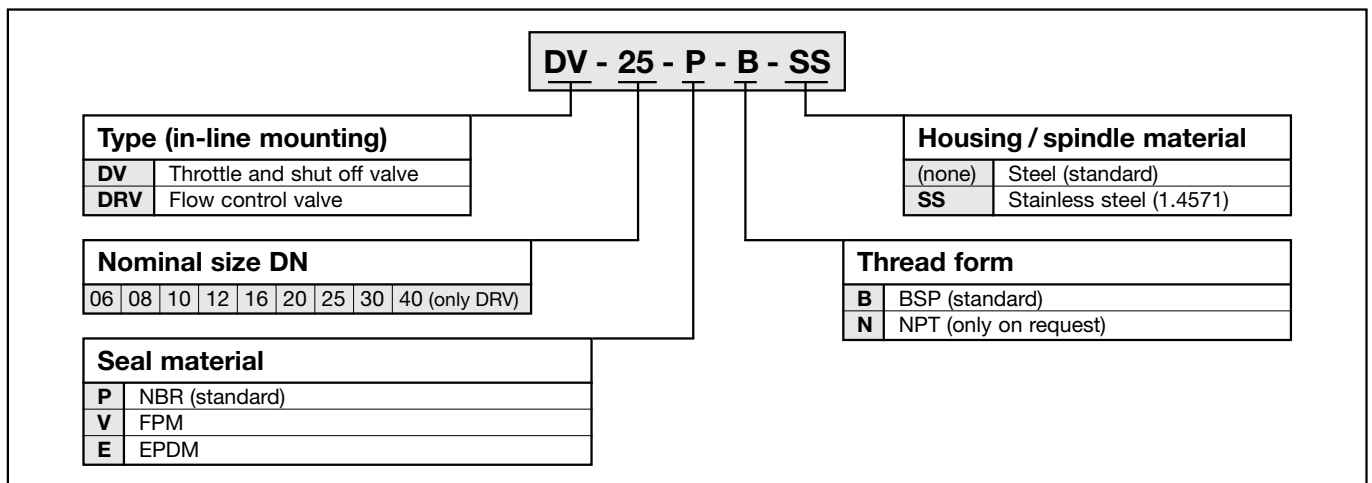
Dimensions



Dimensional Table

Nominal Size DN	G1		DV/DRV								DV		wt. (kg)	DRV		wt. (kg)
	BSP	NPT	G2	H1	H2	H3	B1	D1	D2	S	L1	L2		L1	L2	
06	G 1/8	1/8 NPT	PG 7	68	63	18	16	24	13	3	38	19	0,12	45	26	0,13
08	G 1/4	1/4 NPT	PG 11	83,5	77,5	27	25	29	19	7	48	24	0,25	55	33,5	0,3
10	G 3/8	3/8 NPT	PG 11	90	83	32	30	29	19	7	58	29	0,4	65	41	0,45
12	G 1/2	1/2 NPT	PG 16	109,5	99,5	38,5	35	38	23	7	68	34	0,7	73	44	0,8
16	G 3/4	3/4 NPT	PG 16	128,5	118,5	48,5	45	38	23	7	78	39	1,2	88	57	1,3
20	G 1	1 NPT	PG 29	174	157	55	50	55	38	11	108	54	2,1	127	77	2,4
25	G 1 1/4	1 1/4 NPT	PG 29	184	167	65	60	55	38	11	108	54	2,8	143	93	3,5
30	G 1 1/2	1 1/2 NPT	PG 29	194	177	75	70	55	38	11	108	54	3,5	143	91	4,6
40	G 2	2 NPT	PG 29	214	197	95	90	55	38	11	-	-	-	165	111	7,7

Ordering Code





Area of Application: Fluid control and flow shut off

- DVP: in both directions
- DRVP: in direction A-B (free flow in reverse direction)

Characteristics / Materials:

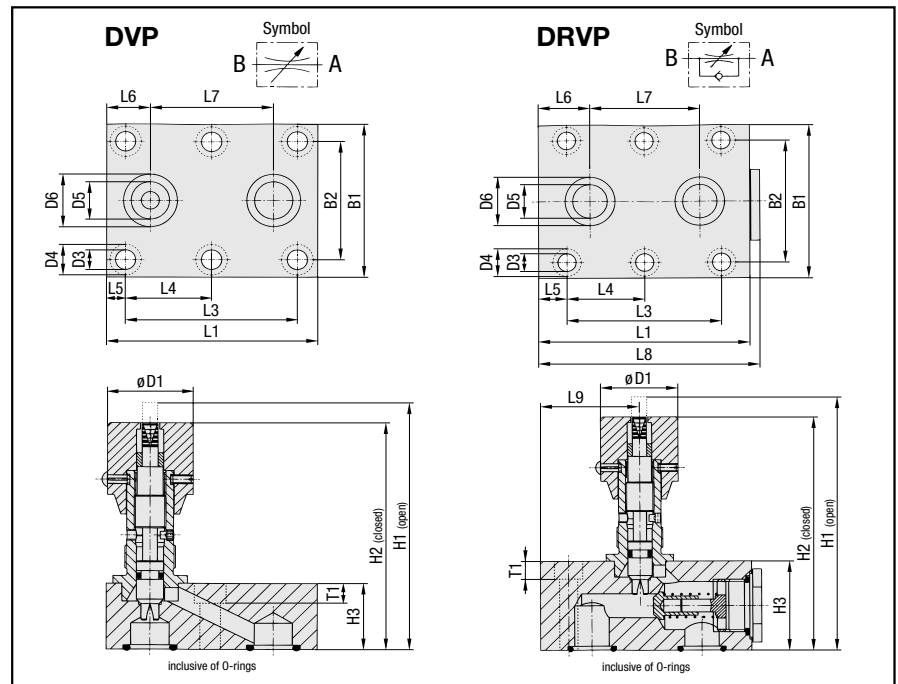
- designed for manifold mounting
- suitable for mineral oils
- Housing: Steel (1.0715), zinc plated (Fe/Zn 8 C)
- Turning knob: Polyamide; aluminium or steel available on request

Please consult our office before using with other fluids, or for special stainless steel material.

Technical Data:

max Working Pressure p_N : 350 bar
 Temperature t_{max} : 100°C
 Opening Pressure DRVP:
 0,5 bar (4,5 bar on request)

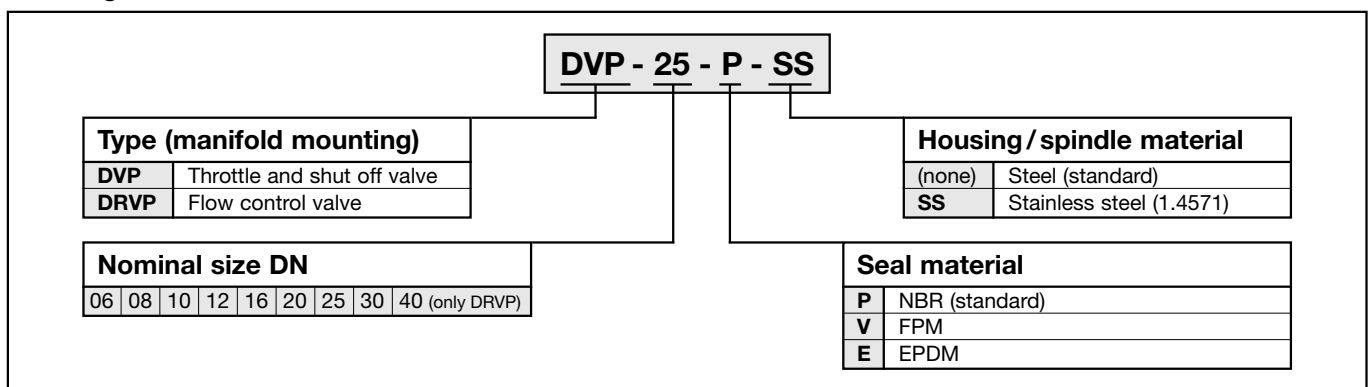
Dimensions



Dimensional Table

Nom. Size DN	DVP and DRVP												DVP						DRVP									
	D1	D3	D4	D5	D6	L3	L4	L7	B1	B2	T1	O-Ring	L1	L5	L6	H1	H2	H3	wt. (kg)	L1	L5	L6	L8	L9	H1	H2	H3	wt. (kg)
06	24	6,6	11	5	9,8	19	-	16	41,5	28,5	7	6,75 x 1,78	35	8	9,5	68	63	16	0,2	41,5	6,4	8	43	13,5	68	63	16	0,26
08	29	6,6	11	7	12,4	35	-	25,5	46	33,5	7	8,5 x 2	47,5	6,5	11	79	72	20	0,4	63,5	14,2	16,7	65	31	79	72	20	0,5
10	29	6,6	11	10	15,7	33,5	-	25,5	51	38	7	12 x 2	51	8,5	12,7	84	78	25	0,6	70	18	22	73	29,5	84	78	25	0,8
12	38	6,6	11	13	18,7	38	-	30	57,5	44,5	7	15 x 2	75	18,5	22,5	100	89	25	1,0	80	21	25	84	36,5	107	96	32	1,2
16	38	8,5	13,5	17	23,9	76	38	54	70	54	9	19 x 2,5	93,5	8,5	19,5	113	103	30	1,5	104	14	25,4	108	49	128	118	45	2,5
20	55	8,5	13,5	22	30,5	95	47,5	57	76,5	60	9	25 x 3	111	8	27	169	152	45	3,4	127	16	35	131	49	174	157	50	3,9
25	55	11	18	28,5	37,5	120	60	79,5	100	76	11	32 x 3	143	11	32	169	152	45	5,15	165	15	35,6	169	77	179	162	55	6,7
30	55	14	20	35	43,5	143	71,5	95	115	92	13	38 x 3	171	15	39	174	157	50	7,5	186	15	38,8	190	85	199	182	75	11,0
40	55	14	20	47,5	57,5	133,5	67	89	140	111	13	52 x 3	-	-	-	-	-	-	-	192	15	40,5	196	64	224	207	100	18,8

Ordering Code





Area of Application:

Fluid control and flow shut off

Characteristics / Materials:

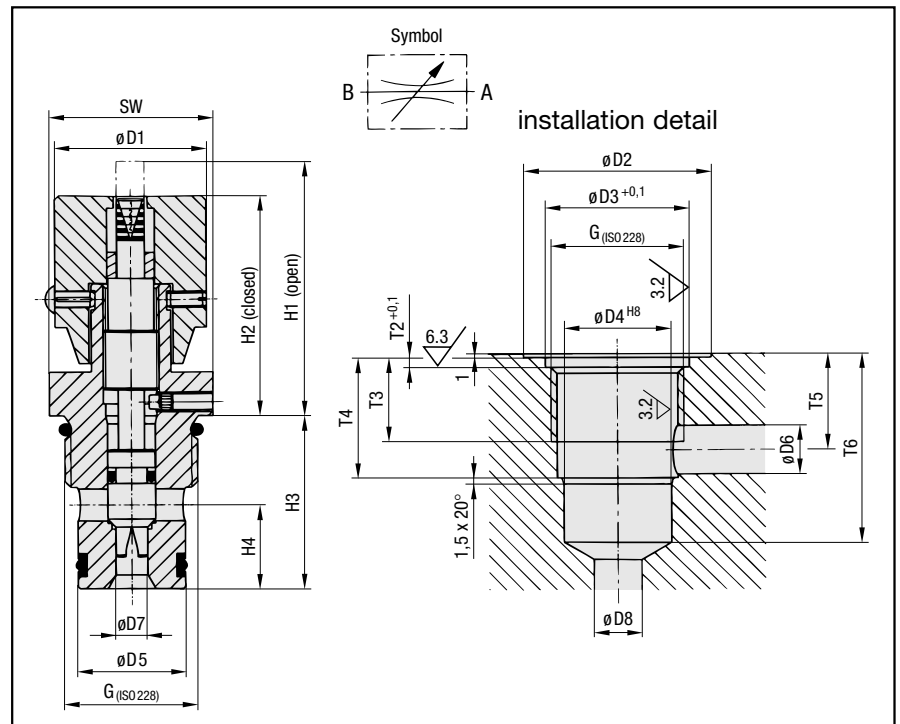
- designed for direct installation into hydraulic control blocks
- suitable for mineral oils
- Housing: Steel (1.0715), zinc plated (Fe/Zn 8 C)
- Standard thread form: BSP; NPT on request
- Turning Knob: Polyamide; aluminium or steel available on request

Please consult our office before using with other fluids, or for special stainless steel material and other thread forms.

Technical Data:

max Working Pressure p_N : 350 bar
Temperature t_{max} : 100°C

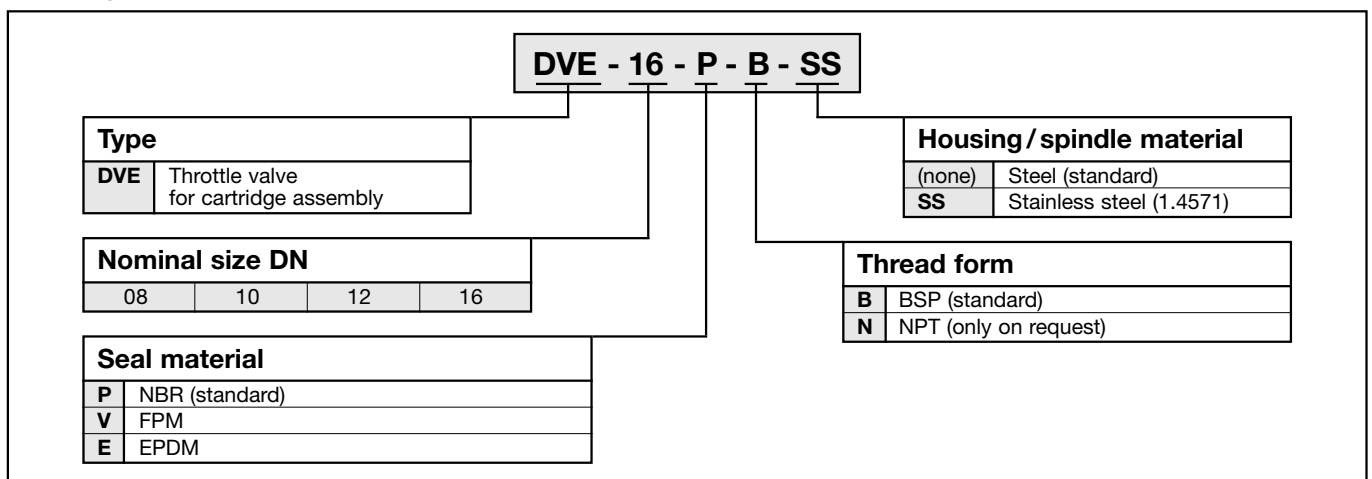
Dimensions

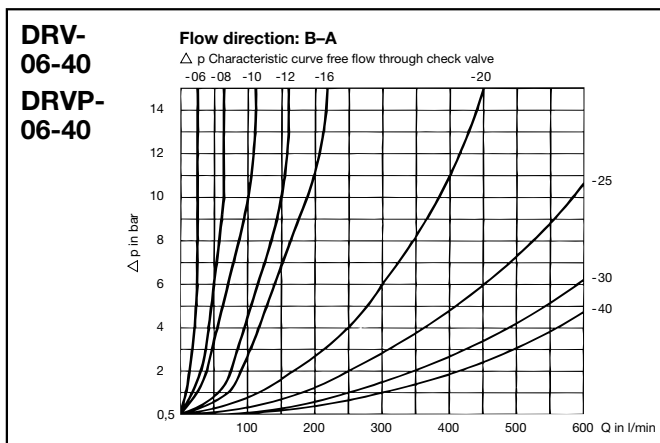
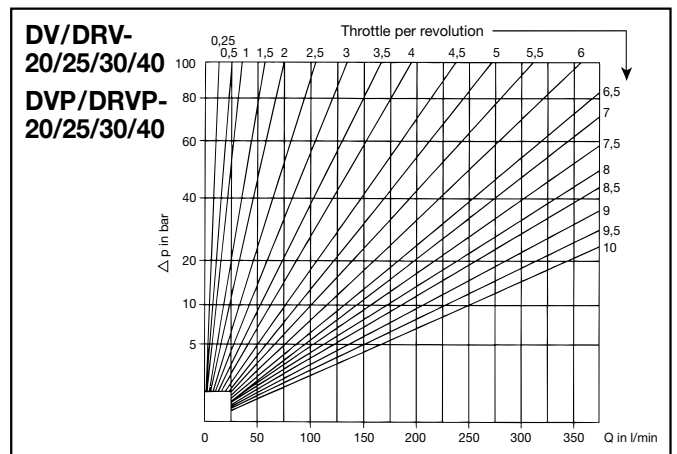
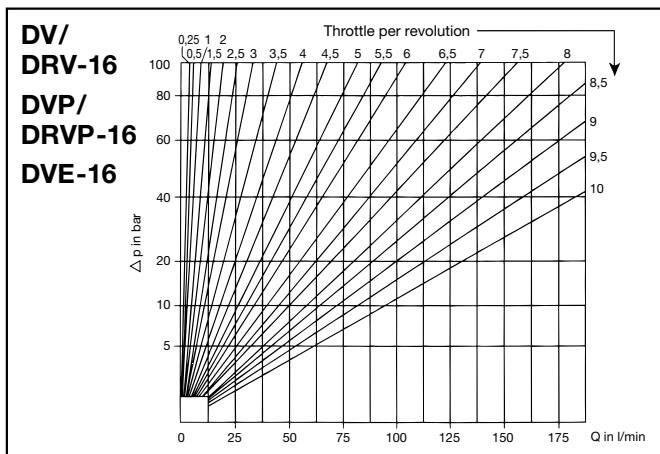
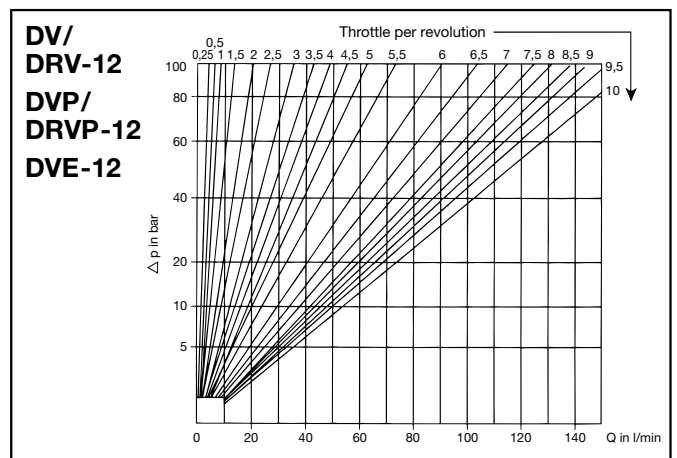
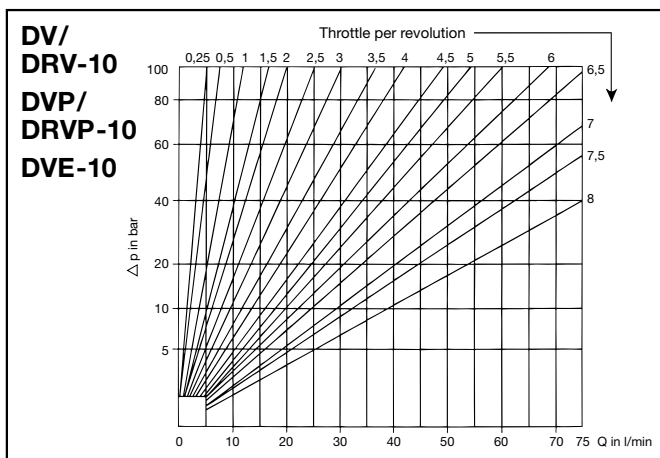
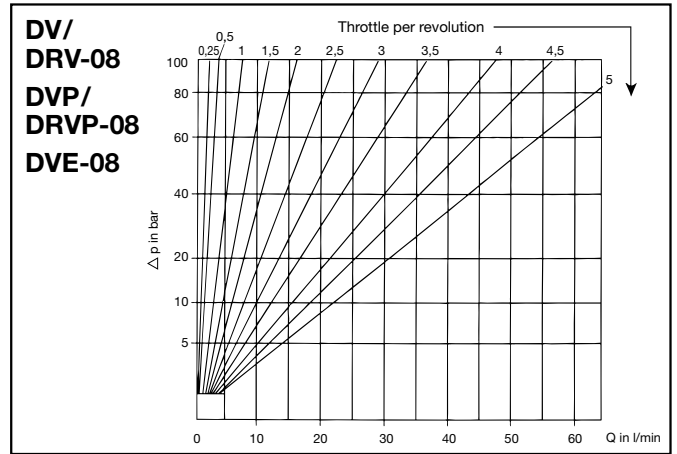
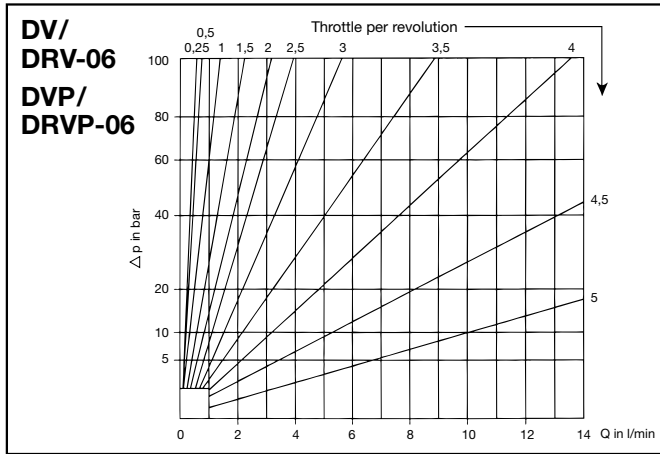


Dimensional Table

Nominal Size wt.	G		H1	H2	H3	H4	D1	D2	D3	D4	D5	D6	D7	D8	SW	T2	T3	T4	T5	T6	Gew (kg)
	BSP	NPT																			
08	G 1/2	1/2 NPT	47	41	27,5	12	29	32	24	14	14	5	5	5	27	1,9	14	17,5	15	29	0,15
10	G 1/2	1/2 NPT	64	54	30,7	14,5	38	32	24	16	16	8	6	8	27	1,9	14	20,5	17	33	0,25
12	G 3/4	3/4 NPT	65	55	40	17,5	38	37	30	19	19	10	8	10	32	1,9	21	29	24	43	0,5
16	G 1	1 NPT	65	55	43,5	21,1	38	47	36	27	27	12	8	12	41	2,4	21	30	24	47	0,7

Ordering Code





STAUFF throttle and flow control valves are designed to shut off and control the flow of liquid media. The flow rate is regulated on a direct reading device by turning the handle from completely closed to fully open and is set by screws.

The increase in flow is also indicated by a colour and number scale. This is revealed on a central spindle emerging from the turning during operation.

The values given refer to a viscosity of 35 cSt.



Area of Application:

Check valves allow a single-directional flow only.

Characteristics / Materials:

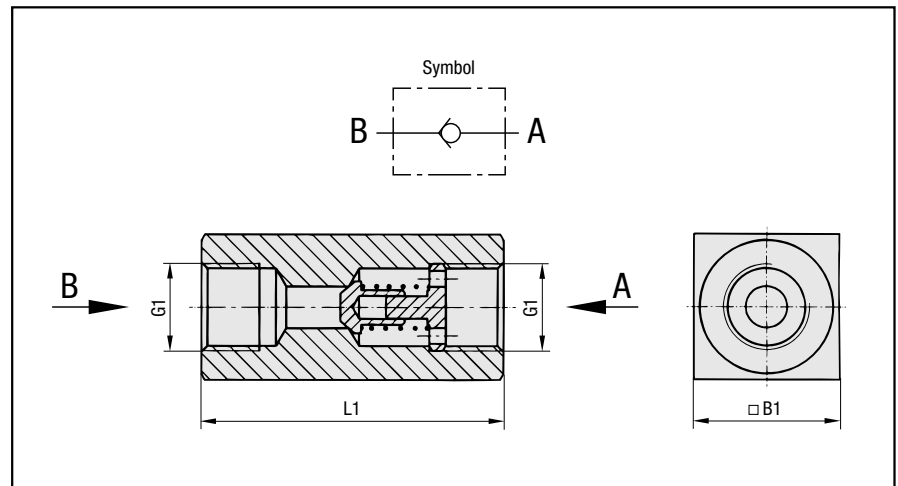
- designed for in-line mounting
- suitable for mineral oil
- Housing: Steel (1.0715), zinc plated (Fe/Zn 8 C)
- Standard thread form: BSP; NPT on request
- metal-to-metal seals

Please consult our office before using with other fluids, or for special material and thread sizes.

Technical Data:

Temperature t_{max} : 100°C
 Opening Pressure RV:
 0,5 bar (4,5 bar on request)

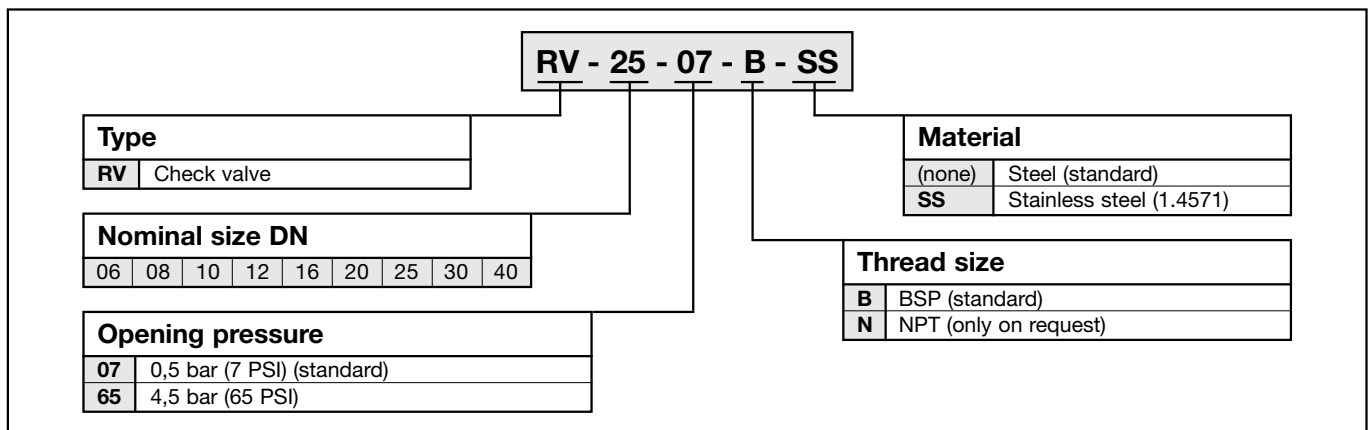
Dimensions



Dimensional Table

Nominal Size DN	p_N (bar)	G1		L1	B1	Weight (kg)
		BSP	NPT			
06	500	G 1/8	1/8 NPT	45	16	0,1
08	500	G 1/4	1/4 NPT	55	25	0,2
10	500	G 3/8	3/8 NPT	65	30	0,4
12	500	G 1/2	1/2 NPT	73	35	0,7
16	500	G 3/4	3/4 NPT	88	45	1,2
20	500	G 1	1 NPT	127	50	2,0
25	400	G 1 1/4	1 1/4 NPT	143	60	3,3
30	315	G 1 1/2	1 1/2 NPT	143	70	4,2
40	315	G 2	2 NPT	165	90	7,2

Ordering Code





Area of Application:

Reservoir installation for direct suction line connection

Characteristics:

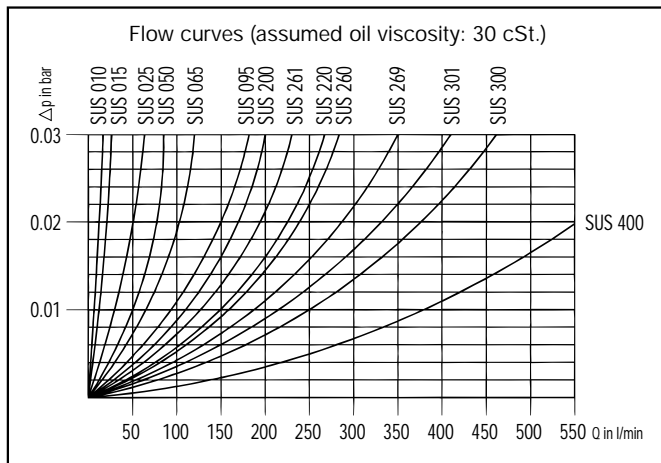
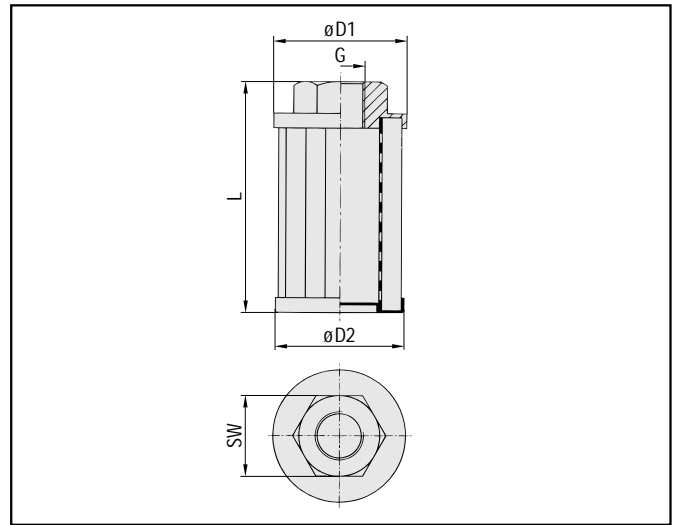
- suitable for mineral oil
- thread form: BSP
- threaded end caps made out of glass fibre reinforced polyamide or aluminium (see Technical Data)

STAUFF suction strainers SUS are available with NPT threads and/or with an integrated bypass on request.

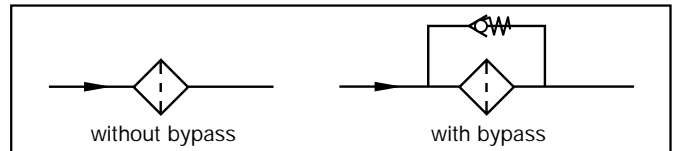
Technical Data

Temperature range:	-20°C ... +100°C
Flow range:	400 l/min max
Connection thread sizes:	G ^{3/8} - G3
Filtermedia:	Stainless steel wire mesh
Support tube material:	Steel, zinc plated
Threaded end cap material:	glass fibre reinforced polyamide; SUS 220-B32-A ... : Aluminium
Bypass opening pressure:	0,20 bar (bypass option on request)

Dimensions



Symbols



Ordering Code and Dimensional Table

SUS - 025 - B12 - P - O - 125

Type							Micron Rating						
SUS	Suction Strainer						<table border="1" style="width: 100%; border-collapse: collapse;"> <tr> <td>060</td> <td>60 µm (on request)</td> </tr> <tr> <td>125</td> <td>125 µm (standard)</td> </tr> <tr> <td>250</td> <td>250 µm (on request)</td> </tr> </table>	060	60 µm (on request)	125	125 µm (standard)	250	250 µm (on request)
060	60 µm (on request)												
125	125 µm (standard)												
250	250 µm (on request)												
							Bypass Option						
							<table border="1" style="width: 100%; border-collapse: collapse;"> <tr> <td>O</td> <td>no bypass (standard)</td> </tr> <tr> <td>3</td> <td>integrated bypass (0,2 bar / 3 PSI)</td> </tr> </table>	O	no bypass (standard)	3	integrated bypass (0,2 bar / 3 PSI)		
O	no bypass (standard)												
3	integrated bypass (0,2 bar / 3 PSI)												
Size	Threaded end cap material	Q max	G	L	D1	D2	SW						
010-B06-P	Plastic	10 l/min	G ^{3/8}	67	50	49	26						
015-B08-P	Plastic	15 l/min	G ^{1/2}	102	50	49	26						
025-B12-P	Plastic	25 l/min	G ^{3/4}	105	68	66	34						
050-B16-P	Plastic	50 l/min	G1	140	68	66	42						
065-B20-P	Plastic	65 l/min	G1 ^{1/4}	140	88	85	50						
095-B24-P	Plastic	95 l/min	G1 ^{1/2}	140	88	85	60						
200-B24-P	Plastic	200 l/min	G1 ^{1/2}	200	102	100	72						
220-B32-A	Aluminium	220 l/min	G2	151	150	145	70						
260-B32-P	Plastic	260 l/min	G2	260	102	100	72						
261-B32-P	Plastic	210 l/min	G2	210	102	100	72						
269-B32-P	Plastic	300 l/min	G2	300	102	100	72						
300-B40-P	Plastic	300 l/min	G2 ^{1/2}	212	131	128	86						
301-B40-P	Plastic	290 l/min	G2 ^{1/2}	210	131	128	86						
400-B48-P	Plastic	400 l/min	G3	272	131	128	96						



Area of Application: In-line or tank top installation

Characteristics / Technical Data:

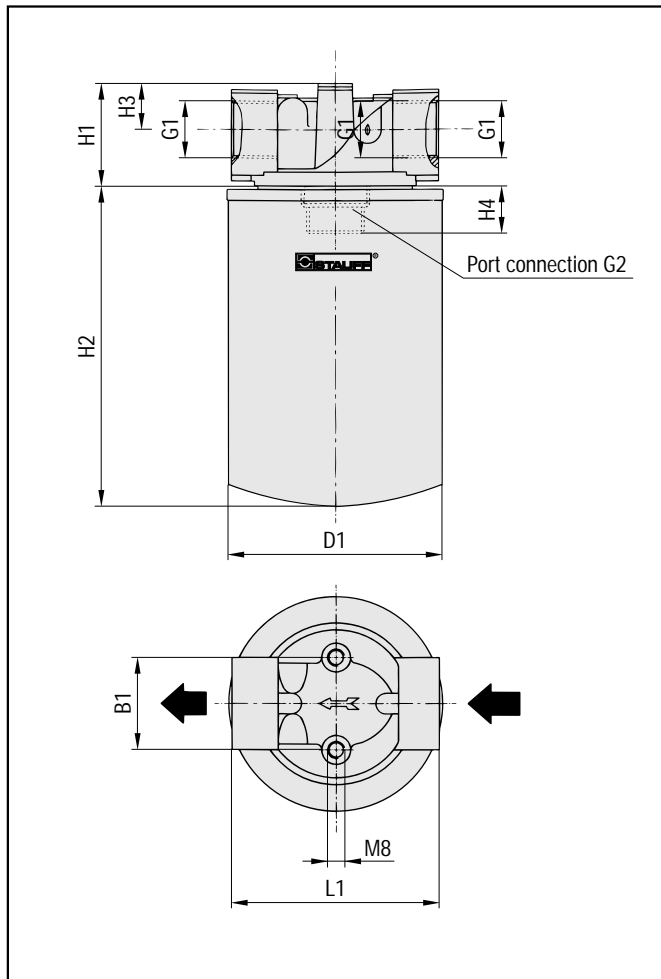
- suitable for hydraulic oil
- available as suction line or return line filter
- Temperature range: $-25^{\circ}\text{C} \dots +110^{\circ}\text{C}$
- max operating pressure: 12 bar
- burst pressure: 18 bar
- standard filter materials: paper; 10 μm , 25 μm
- opening pressure bypass valves: suction filters: 0,25 bar \pm 10%
return line filters: 1,70 bar \pm 10%
- standard seal material: NBR

Replacement filter elements are available with other micron ratings on request.

This chapter includes in particular:

Page	Topic	Notes
24	Characteristics / Technical Data	for all STAUFF Spin-On Filter series
24	Series SSF 12 / SSF 20	
25	Series SSF 24 / SSF 25	
26	Series SSFT 12 / SSFT 20	
26	Clogging indicators	for all STAUFF Spin-On Filter series
27	Replacement Elements	for all STAUFF Spin-On Filter series
27	Flow curves	for mostly required filter heads and replacement elements
28	Ordering Code	for complete filters and filter elements

Series SSF 12, SSF 20



Spin-On Filters for in-line assembly with one filter element.

Dimensional Table

Type	SSF12	SSF20
G1	G 3/4	G 1 1/4
G2	G 3/4	G 1 1/4 und 1 1/2 - 16 UNF (dual spigot)
D1	98	132
H1	44	61
H2	see element length for SFC35/36 (S.27)	see element length for SFC57/58 (S.27)
H3	22	29
H4	15	35
B1	38	50
L1	95	133

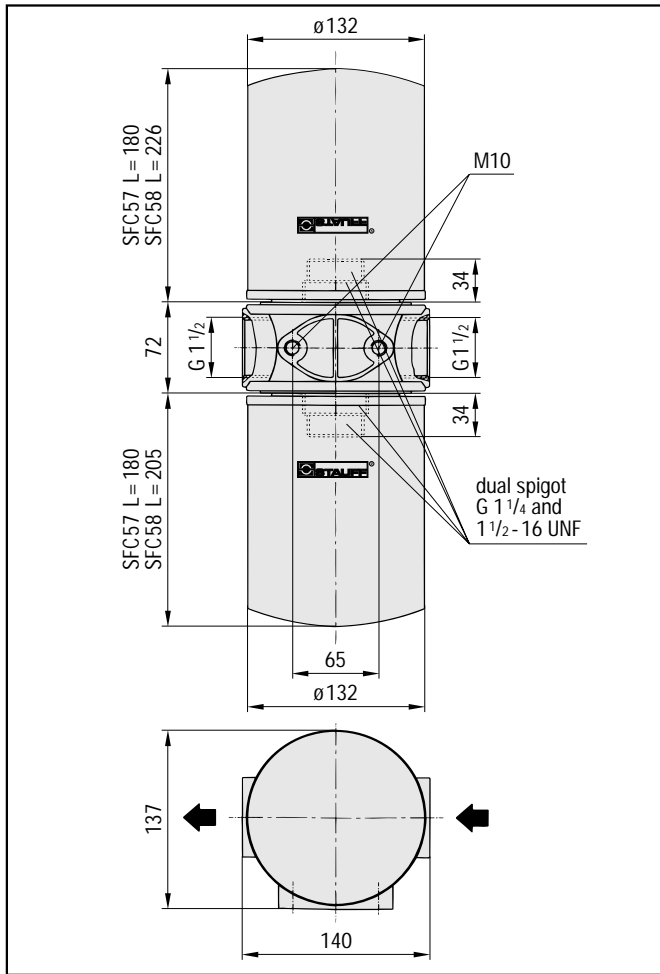
minimum clearance for element installation:
element length + 20 mm (SSF 12) / + 40 mm (SSF 20)

Styles available:

- SSF xx-R** Return line filter with bypass valve 1,7 bar
- SSF xx-S** Suction filter with bypass valve 0,25 bar
- SSF xx-N** Return line or suction filter without bypass

Details on elements, clogging indicators and ordering codes see pages 26 - 28.

Series SSF 24



Spin-On Filters for in-line assembly with two filter elements (top/bottom mounting).

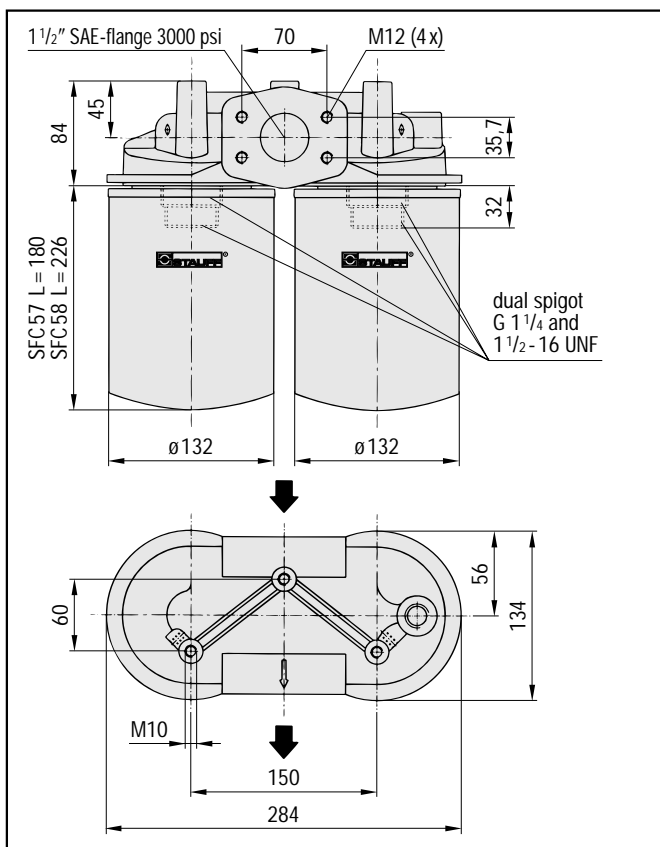
minimum clearance for element installation:
element length + 40 mm

Styles available:

- SSF 24-R** Return line filter with bypass valve 1,7 bar
- SSF 24-S** Suction filter with bypass valve 0,25 bar
- SSF 24-N** Return line or suction filter without bypass

Details on elements, clogging indicators and ordering codes see pages 26 – 28.

Series SSF 25



Spin-On Filters for in-line assembly with two filter elements (parallel mounting).

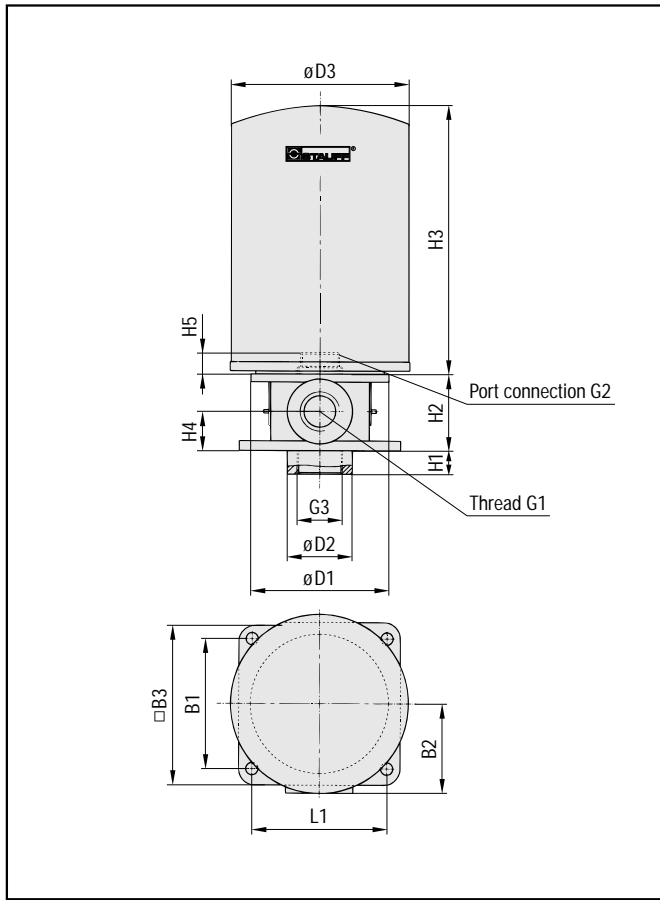
minimum clearance for element installation:
element length + 40 mm

Styles available:

- SSF 25-R** Return line filter with bypass valve 1,7 bar
- SSF 25-S** Suction filter with bypass valve 0,25 bar
- SSF 25-N** Return line or suction filter without bypass

Details on elements, clogging indicators and ordering codes see pages 26 – 28.

Series SSFT 12, SSFT 20



Spin-On Filters for tank top assembly with one filter element.

Dimensional Table

Type	SSFT12	SSFT20
D1	76	135
D2	35	60
D3	98	132
G1	G 3/4	G 1 1/2
G2	G 3/4	G 1 1/4 und 1 1/2 - 16 UNF (dual spigot)
G3	G 3/4	G 1 1/2
H1	16	20
H2	50	73
H3	see element length for SFCT35/36 (S.27)	see element length for SFCT57/58 (S.27)
H4	25	50
H5	14	34
L1	70	100
B1	70	100
B2	50	70
B3	90	120

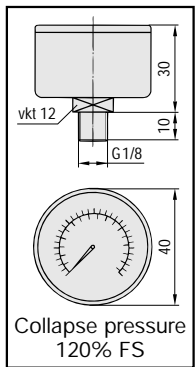
minimum clearance for element installation:
 element length + 20 mm (SSFT 12) / + 40 mm (SSFT 20)

Styles available:

SSFT xx Return line filter

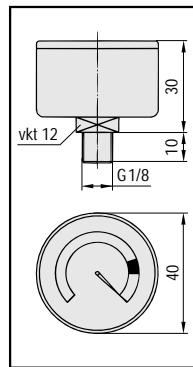
Details on elements, clogging indicators and ordering codes see pages 26 – 28.

Clogging indicators



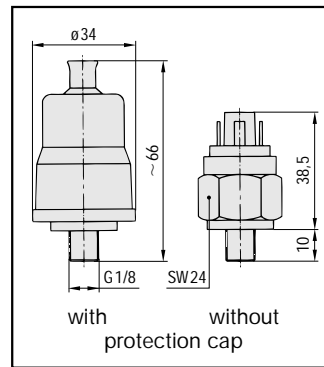
SIM

Function: Pressure gauge for return line filter
 Pressure range:
 SIM-12 0 - 12 bar
 SIM-04 0 - 4 bar
 SIM-02 0 - 2,5 bar



SIS

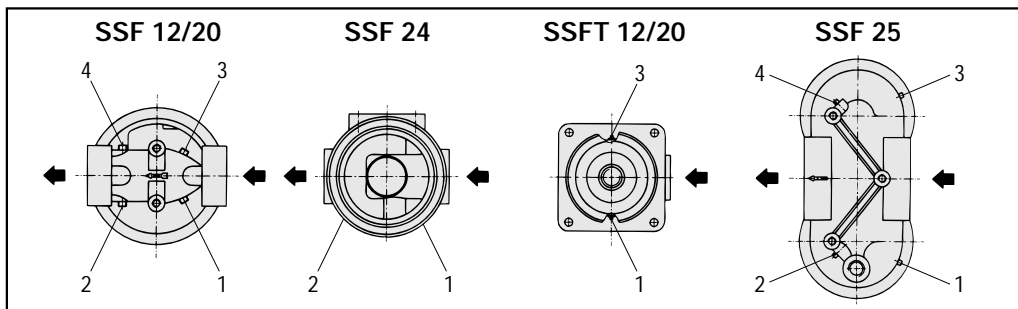
Function: Vacuum gauge for suction filters
 Vacuum range:
 0 - 76 cm HG



SIE-NO/SIE-NC

Function: Electrical pressure switch for return line filters
 pick-up pressure: 1,3 bar
SIE-NO: "break contact" (standard contact "normally open")
SIE-NC: "make contact" (standard contact "normally closed")

Clogging indicator mounting instruction

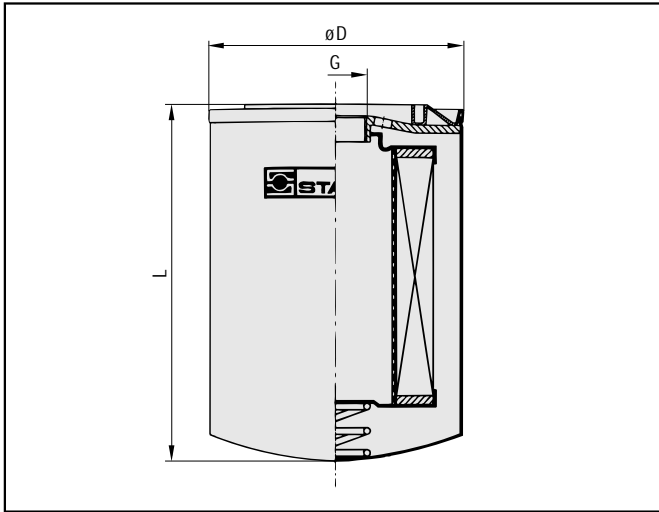


Technical Data SIE-NO and SIE-NC

max operating voltage: 48 V
 max current (res.): 0,5 A
 max current (ind.): 0,2 A
 Materials
 Membrane: NBR
 Housing: Brass
 Operating temperature: -5 ... +60°C
 System of protection: IP54
 max working pressure (static): 80 bar

Pos. No.	Mounting Position of clogging indicator	Filter type	Clogging indicator
1	filter entry; left handside	return line filter	pressure gauge SIM, electrical pressure switch SIE
2	filter exit; left handside	suction filter	vacuum gauge SIS
3	filter entry; right handside	return line filter	pressure gauge SIM, electrical pressure switch SIE
4	filter exit; right handside	suction filter	vacuum gauge SIS

Replacement elements

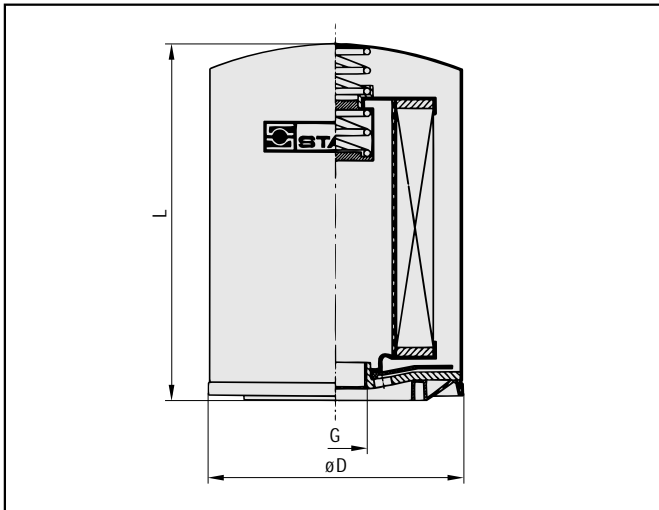


SFC elements for series SSF (in-line mounting)

Dimensional Table

Type	SFC-35	SFC-36	SFC-57	SFC-58
G	G 3/4	G 3/4	G 1 1/4	G 1 1/4
D	98	98	132	132
L	145	190	180	226

Details on ordering codes (single parts and combinations) see page 28.



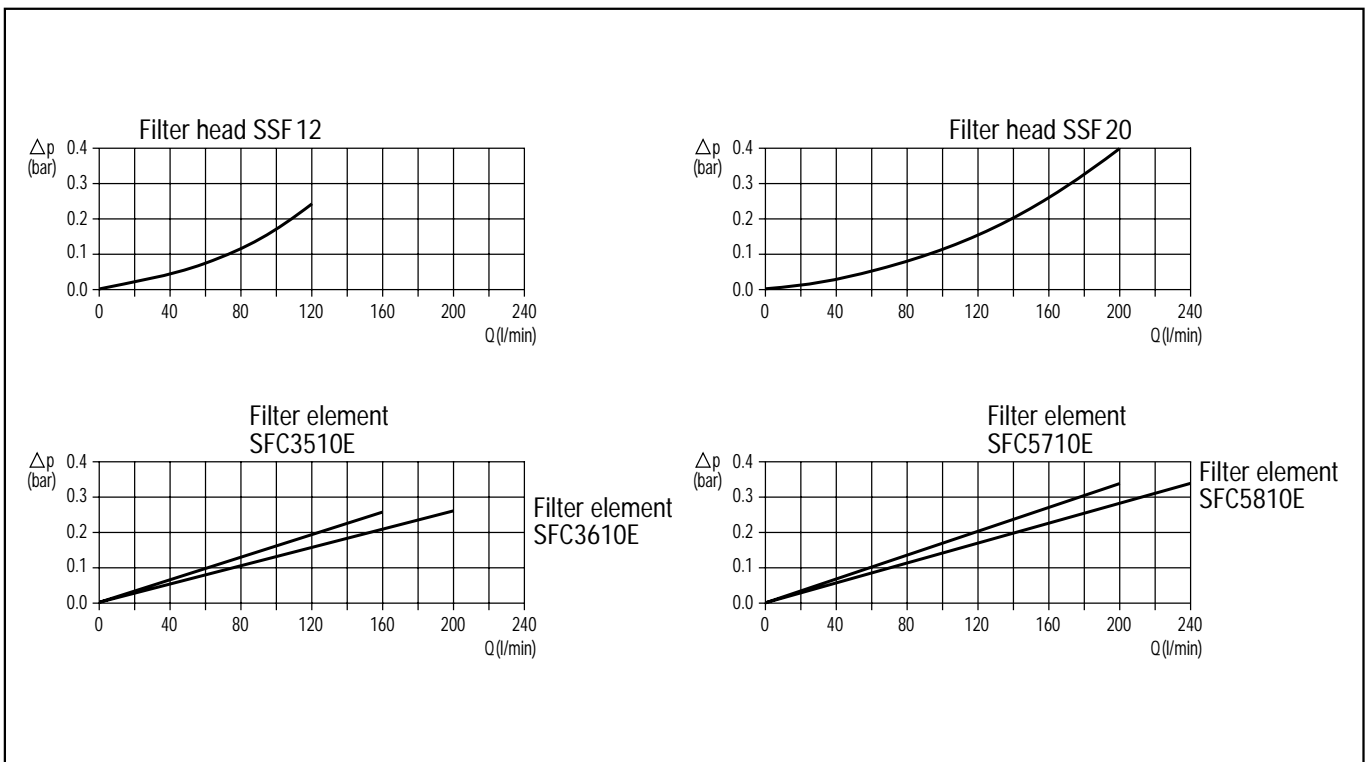
SFCT elements for series SSFT (tank top mounting)

Dimensional Table

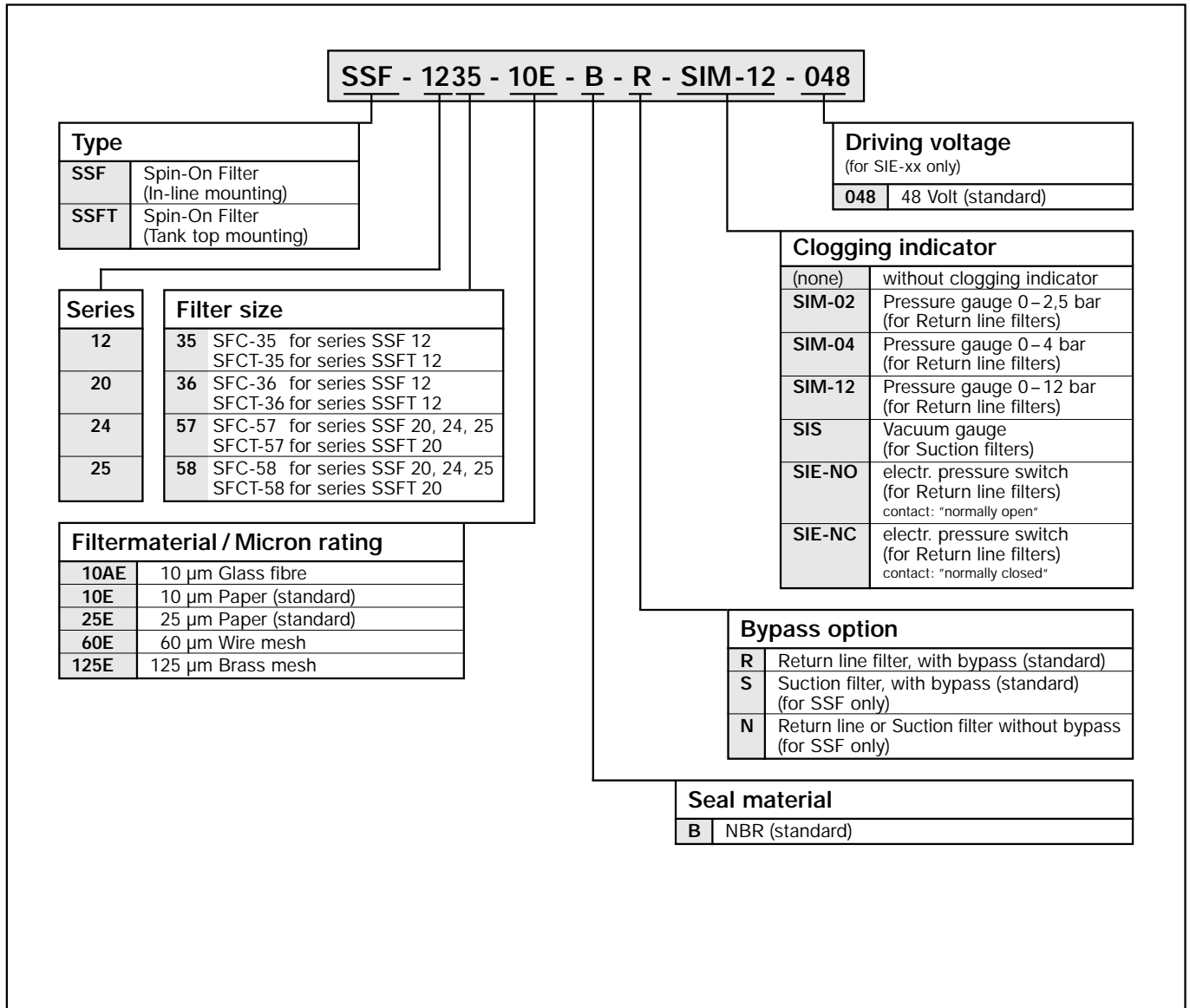
Type	SFCT-35	SFCT-36	SFCT-57	SFCT-58
G	G 3/4	G 3/4	G 1 1/4	G 1 1/4
D	98	98	132	132
L	145	190	180	226

Details on ordering codes (single parts and combinations) see page 28.

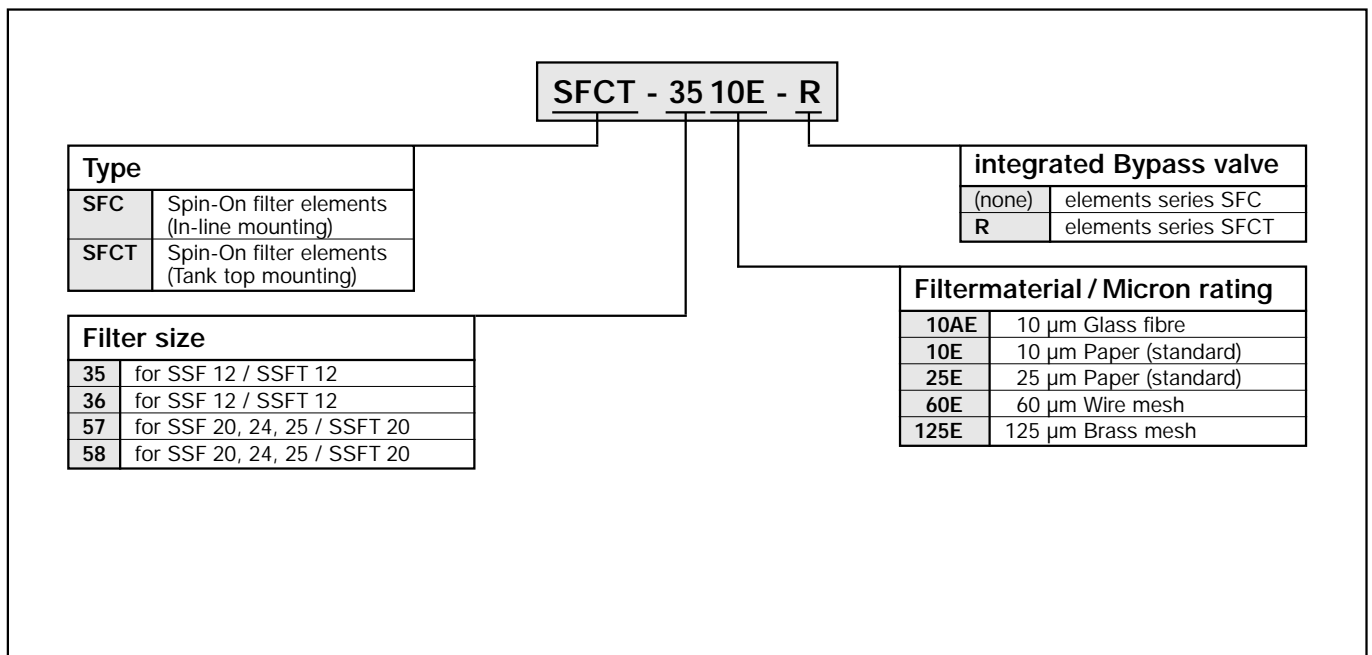
Flow curves (l/min) – assumed oil viscosity: 30 cSt.



Ordering Code for complete filters



Ordering Code for filter elements





Area of Application:

Foaming and noise reduction in tanks

Characteristics:

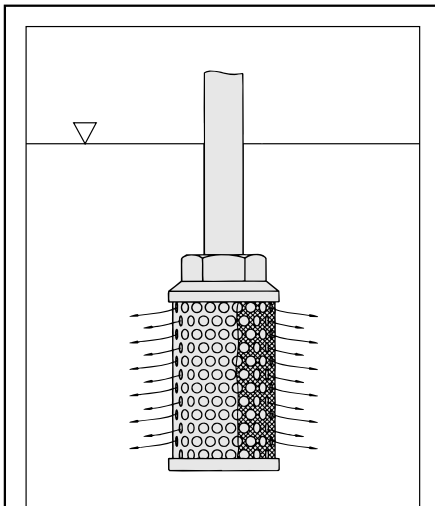
- suitable for mineral oil
- reduce fluid aeration
- silencing
- standard thread form: BSP
- consist of two concentric tubes with discharge holes

STAUFF-Diffusers SRV are available with NPT threads on request.

Technical Data

Temperature range: -20°C ... +100°C
 Flow range: 950 l/min max
 Connection thread sizes: G^{3/4} – G3
 End cap material: Aluminium
 Body material: Steel, zinc plated

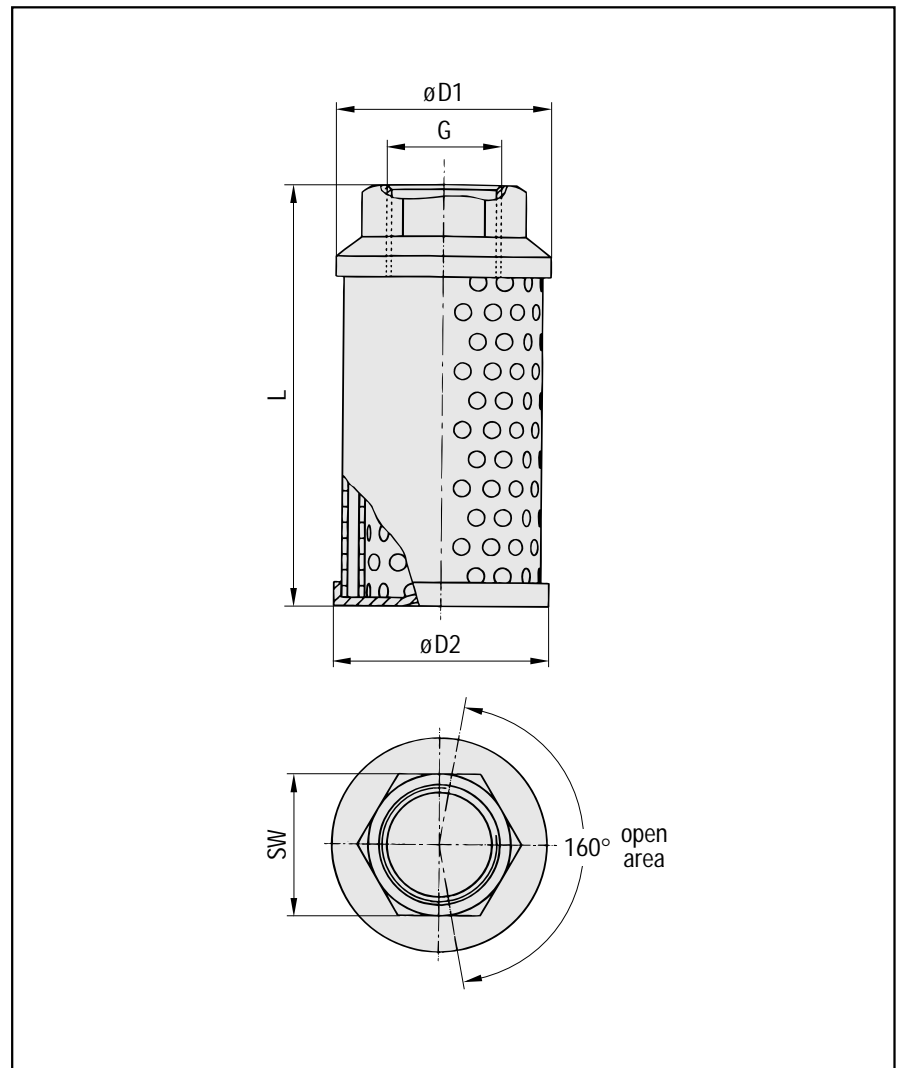
Example of Application SRV



Note

SRV must be completely installed below the liquid level. Its plain area on the outside must be facing the pump inlet.

Dimensions



Ordering Code and Dimensional Table

Type	Q max	G	L	D1	D2	SW
SRV-050-B12	50 l/min	G ^{3/4}	109	64	60	36
SRV-114-B16	114 l/min	G1	139	64	60	46
SRV-200-B20	200 l/min	G1 ^{1/4}	139	86	82	60
SRV-227-B24	227 l/min	G1 ^{1/2}	200	86	82	60
SRV-454-B32	454 l/min	G2	260	86	82	70
SRV-650-B40	650 l/min	G2 ^{1/2}	211	150	145	90
SRV-950-B48	950 l/min	G3	272	150	145	100



Area of Application:

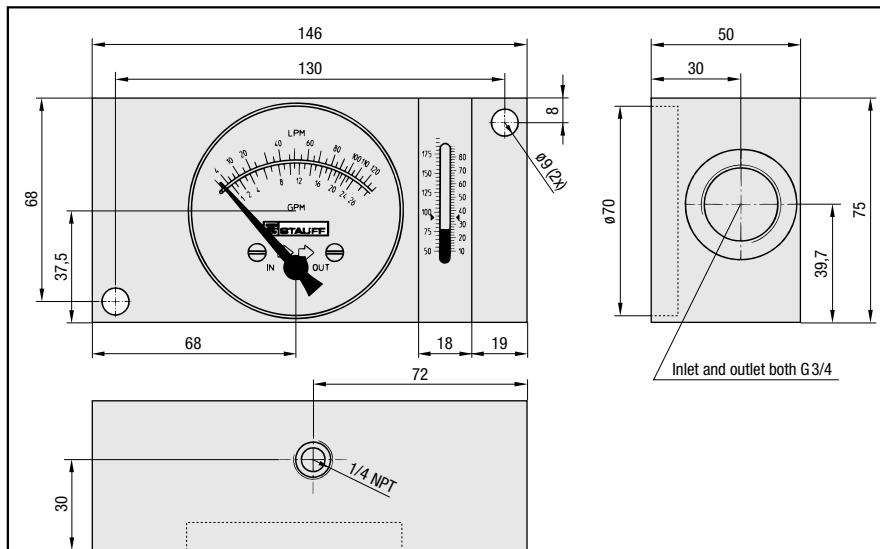
Flow, pressure and temperature measuring of fluids (mobile and industrial hydraulics)

Characteristics:

- suitable for mineral oil (aluminium), HFC fluids and water (bronze)
- designed for in-line installation
- mechanical process (off the line)
- with 1/4 NPT connection for pressure gauge adaption

SDM indicator offer a simultaneous measurement of pressure, flow and temperature (dual scale in °C and °F).

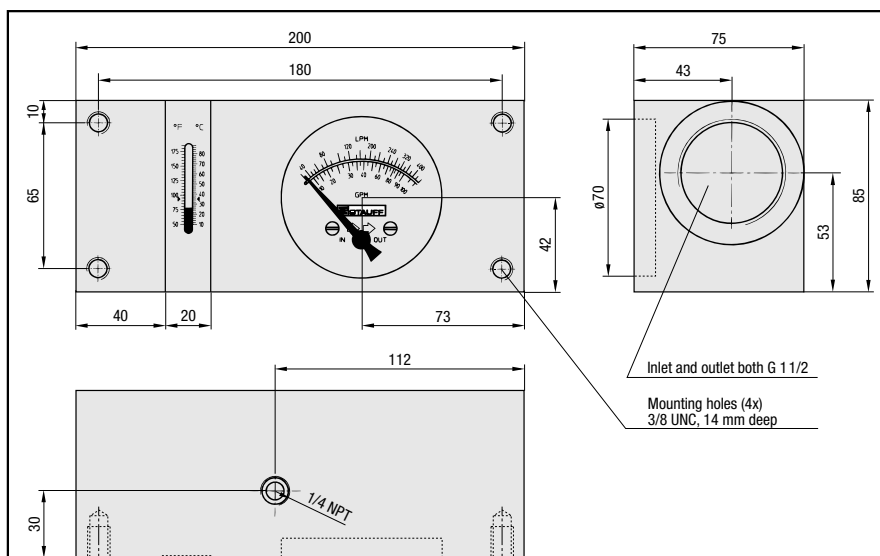
Dimensions SDM-750



Technical Data

Accuracy:
 Flow: ± 4% FSD
 Temperature: ± 2°C
 Temperature measuring range: 10°C ... 80°C

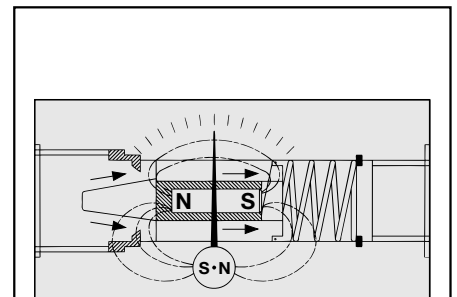
Dimensions SDM-1500



Technical Data

Accuracy:
 Flow: ± 4% FSD
 Temperature: ± 2°C
 Temperature measuring range: 10°C ... 80°C

Functional principal

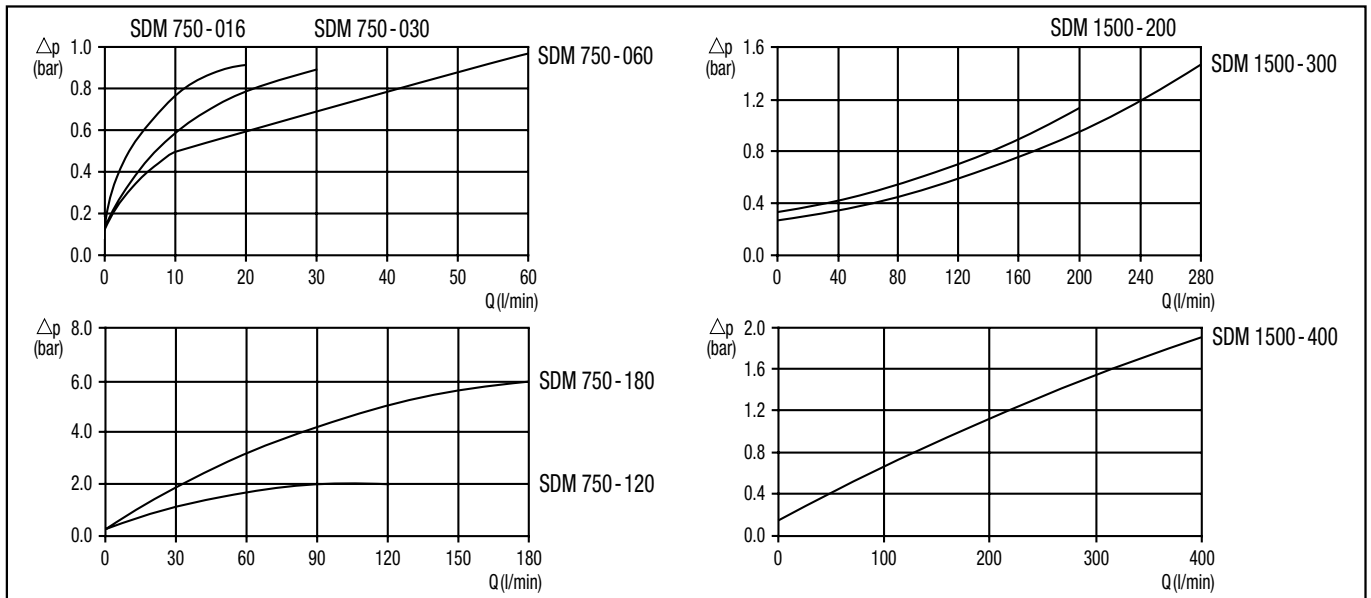


The flow indicator SDM has a sharp-edged orifice and a tapered metering piston, which moves in proportion to changes of flow against a spring. In no flow condition the piston closes the opening and the pointer indicates zero. With increasing flow and differential pressure the piston moves against the calibrated spring. The piston movement is directly proportional to the flow rate and is magnetically coupled to the rotary pointer. During this function the sharp-edged orifice minimises the effects of viscosity. The flow is shown on a calibrated scale in l/min and gal/min.

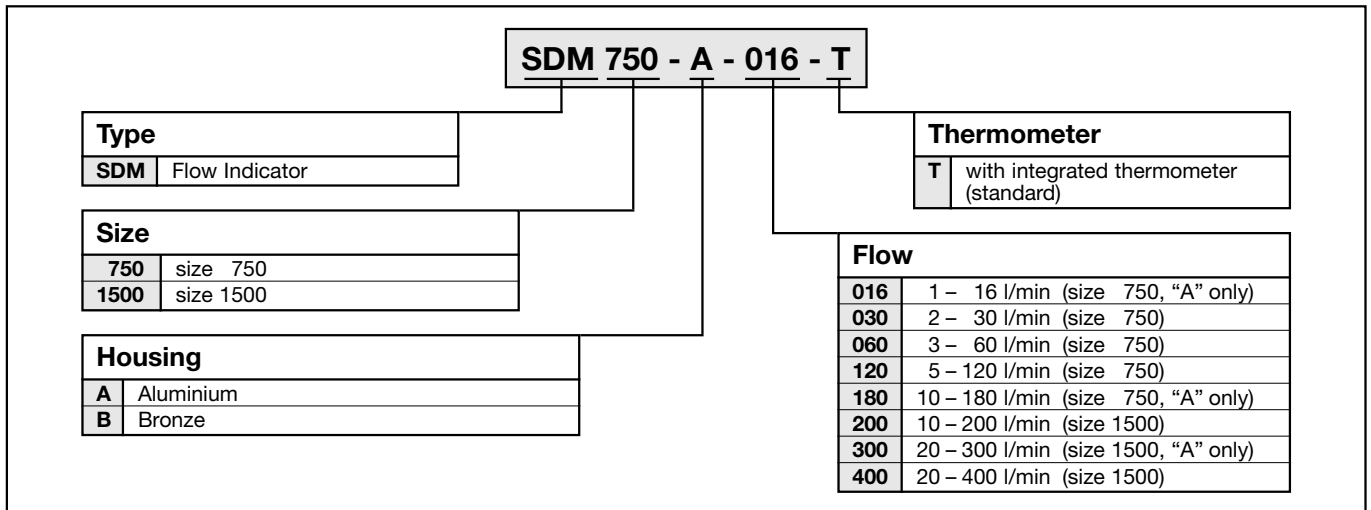
Technical Data

Part Number	max Working press.	Flow range	Weight	Connection	Dimensions (mm)
SDM-750-A-016-T	420 bar	1 – 16 l/min	1,360 kg	G 3/4	146 x 75 x 50
SDM-750-A-030-T	420 bar	2 – 30 l/min	1,360 kg	G 3/4	146 x 75 x 50
SDM-750-A-060-T	420 bar	3 – 60 l/min	1,360 kg	G 3/4	146 x 75 x 50
SDM-750-A-120-T	420 bar	5 – 120 l/min	1,360 kg	G 3/4	146 x 75 x 50
SDM-750-A-180-T	420 bar	10 – 180 l/min	1,360 kg	G 3/4	146 x 75 x 50
SDM-750-B-030-T	420 bar	2 – 35 l/min	4,250 kg	G 3/4	146 x 75 x 50
SDM-750-B-060-T	420 bar	3 – 70 l/min	4,250 kg	G 3/4	146 x 75 x 50
SDM-750-B-120-T	420 bar	5 – 140 l/min	4,250 kg	G 3/4	146 x 75 x 50
SDM-1500-A-200-T	280 bar	10 – 200 l/min	3,000 kg	G 1 1/2	200 x 85 x 75
SDM-1500-A-300-T	280 bar	20 – 300 l/min	3,000 kg	G 1 1/2	200 x 85 x 75
SDM-1500-A-400-T	280 bar	30 – 400 l/min	3,000 kg	G 1 1/2	200 x 85 x 75
SDM-1500-B-200-T	280 bar	10 – 200 l/min	8,000 kg	G 1 1/2	200 x 85 x 75
SDM-1500-B-400-T	280 bar	30 – 400 l/min	8,000 kg	G 1 1/2	200 x 85 x 75

Flow Curves



Ordering Code





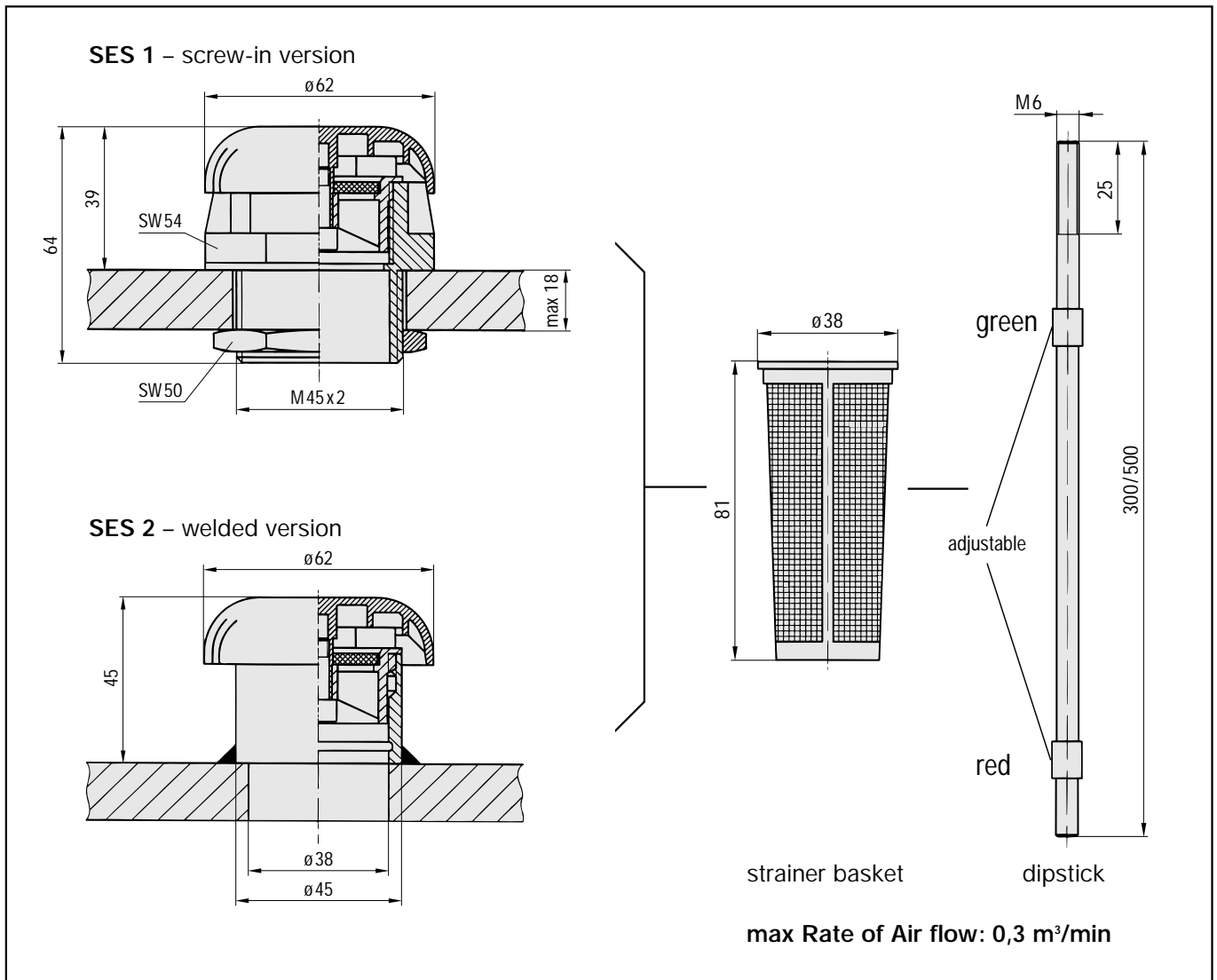
Area of Application:
Ventilation and tank filling

Materials:

- Breather cap: PA
- Plastic stud: PA
- Socket: Steel (1.0718)
- Nut: Steel (1.0718); PA available on request
- Air filter insert: Sintered bronze; Rating 45 µm
- Basket: PA; micron rating 300 µm
- Dipstick: Steel (9SMnPb28)

Combinations with basket or dipstick.

Dimensions



Ordering Code

SES 1 - M300	
Type	Accessories
SES Filler Breather	(none) no accessory
Execution	S Basket, 81 mm
1 screw-in version	M300 Dipstick, 300 mm
2 welded version	M500 Dipstick, 500 mm



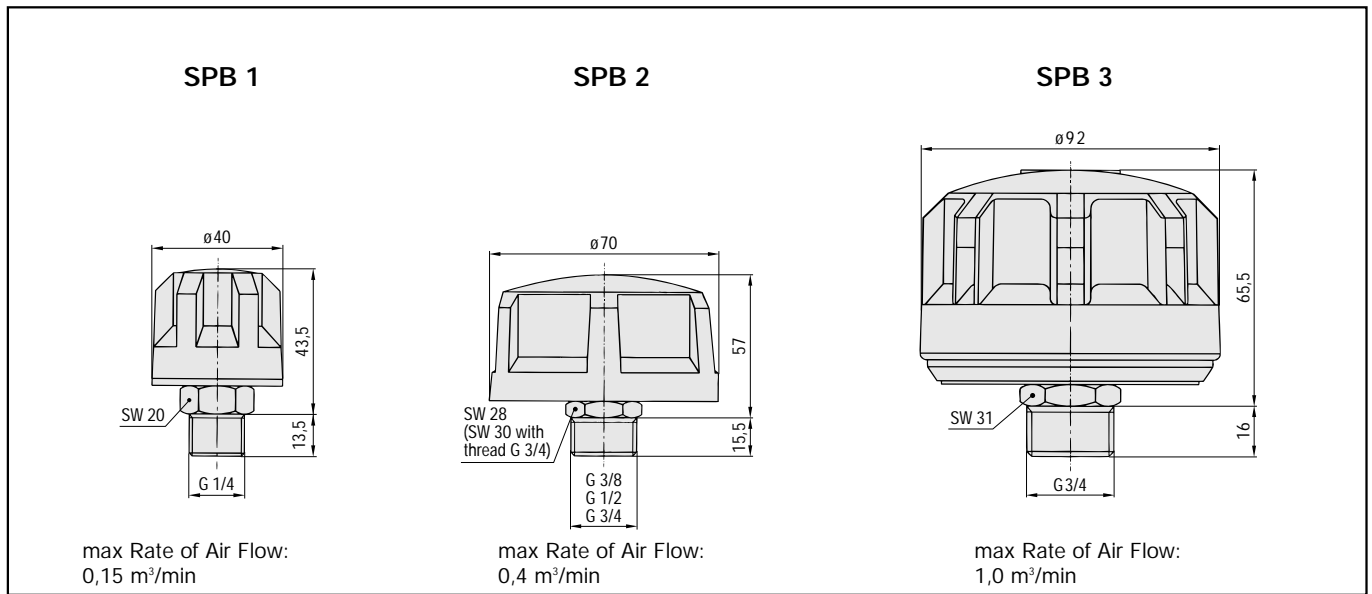
Area of Application:
Ventilation and tank filling

Characteristics / Materials:

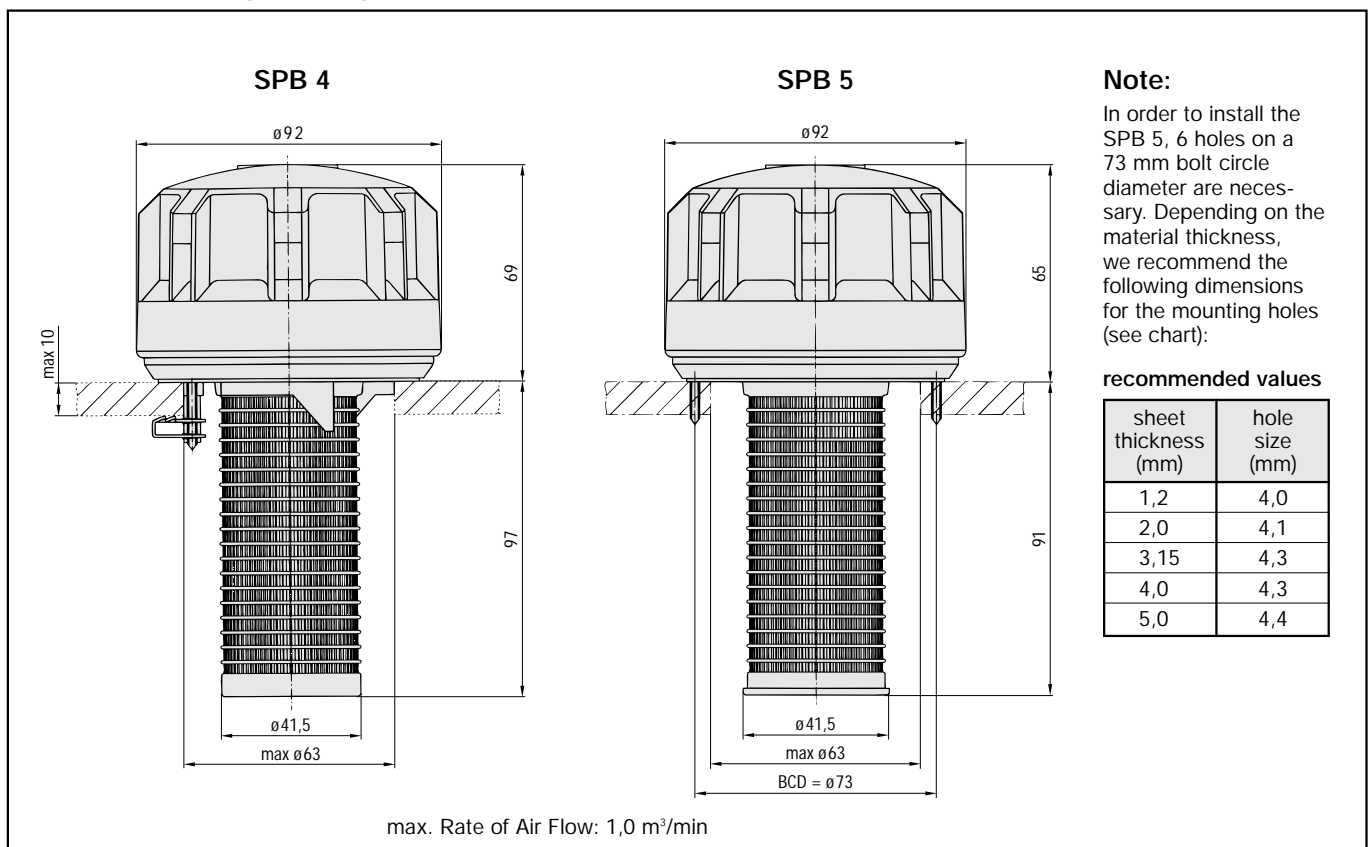
- available as screw-in or bayonet version
- non-corrosive
- Temperature range: - 40°C ... + 120°C
- Materials: glass fiber reinforced PA and PP
- Seals: NBR; Flange seal SPB 5: Cork
- Air filter insert: 10 µm foam (PUR)

Custom built combinations and special requirements available on request.

Dimensions and Styles – Screw-in versions (Breathers)



Dimensions and Styles – Bayonet version (Filler breathers)



Note:
In order to install the SPB 5, 6 holes on a 73 mm bolt circle diameter are necessary. Depending on the material thickness, we recommend the following dimensions for the mounting holes (see chart):

recommended values

sheet thickness (mm)	hole size (mm)
1,2	4,0
2,0	4,1
3,15	4,3
4,0	4,3
5,0	4,4

Combinations / Special Requirements:

By combining STAUFF plastic filler breathers with additional components, they can easily be designed for your individual requirements.

The options available open up immense possibilities to create a custom built filler breather that is suitable for your special application.

Please give us your enquiry, and you will receive your personal quotation.

Options available on request:

- Pressurised version for SPB 2
- Air filter rating 40 µm
- Dipsticks for Screw-in versions (Material: PA)
- Thread form NPT for SPB 1 – 3

Dipstick option

Description and Dimensional Table

SPB style	SPB 2	SPB 3
SPB cap size	70	92
Thread size	G 1/2 G 3/4	G 3/4
Dipstick Part No.	DS 1- 300	

The dipstick option is available for the given thread sizes only!

Ordering Code

SPB - S - 2 - 10 - B12 - D300

Type	SPB Plastic filler breather	Accessories (for screw-in versions only)	(none) without dipstick
Version (Pressurisation for SPB 2 only)	S without pressurisation (standard)	D300 Dipstick 300 mm	
	P1 pressurised at 0,20 bar		
	P2 pressurised at 0,35 bar		
	P3 pressurised at 0,70 bar		
Cap size	1 40 mm, screw-in version	Connection	B04 screw-in version, G 1/4 (for SPB 1)
	2 70 mm, screw-in version		B06 screw-in version, G 3/8 (for SPB 1+2)
	3 92 mm, screw-in version		B08 screw-in version, G 1/2 (for SPB 2)
	4 92 mm, single hole reservoir installation		B12 screw-in version, G 3/4 (for SPB 2/3)
	5 92 mm, six hole reservoir installation		S080 basket (for SPB 4/5 only)
			X no basket (for SPB 4/5 only)
		Micron rating	10 10 µm (standard)



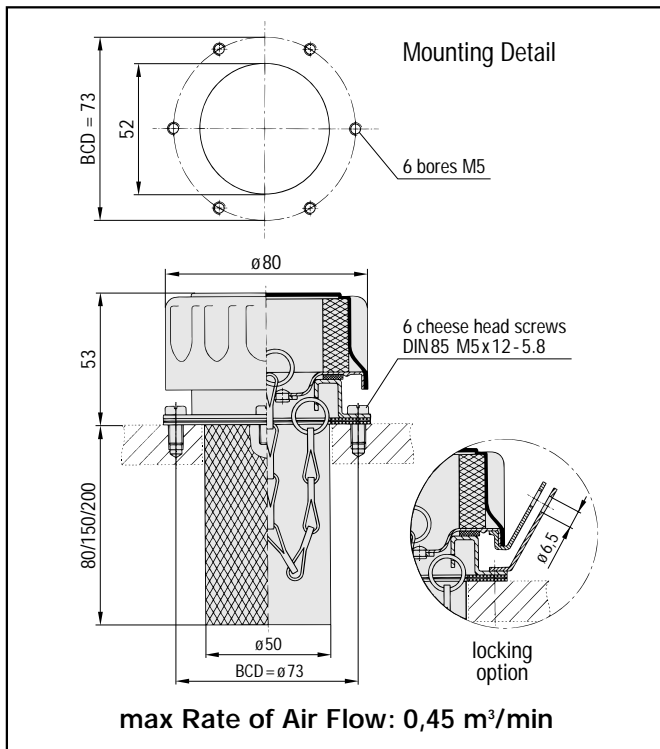
Area of Application:
Ventilation and tank filling

Standard Versions:

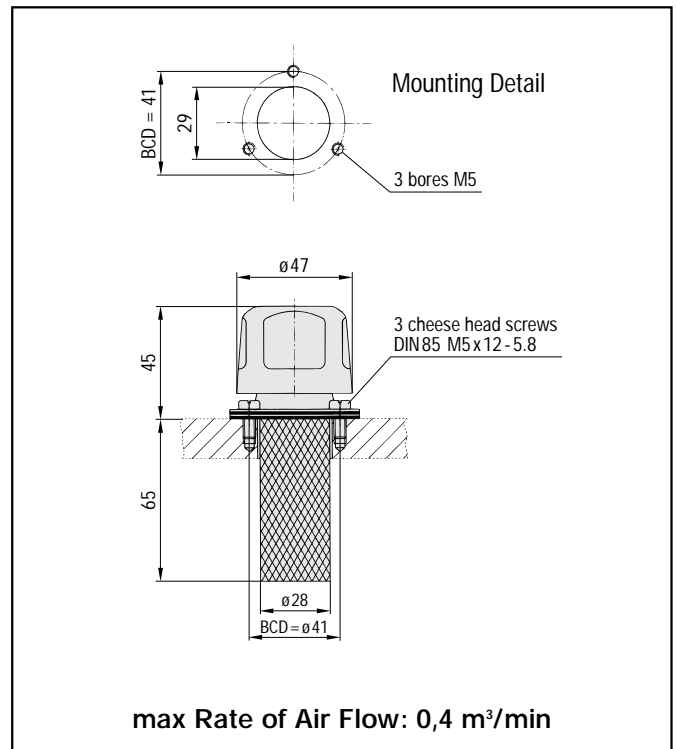
- Breather cap: Steel, chrome-plated
- Socket: Steel, chrome plated
- Air filter insert: 10 µm foam (PUR)
- Basket: Steel, zinc plated
- Basket Micron Rating: 300 µm
- Gaskets: Cork, Rubber

Custom built combinations and specials are available on request.

Dimensions SES 3



Dimensions SES 6



Ordering Code

SES 3 - 10 - S080 - O - L - W

Type		Metal cap design	
SES	Filler breather	O	chrome-plated (standard)
		W	black epoxy
Cap size		Accessories	
3	80 mm	O	none
6	47 mm	L	locking option (for SES 3 only)
Micron rating		Dipstick	
03	3 µm paper (for SES 3 only)	O	none (standard)
10	10 µm foam (PUR) (standard)	Dxxx	Dipstick (on request)
40	40 µm foam (PUR)		
Basket			
S080	80 mm (for SES 3 only)		
S150	150 mm (for SES 3 only)		
S200	200 mm (for SES 3 only)		
S065	65 mm (for SES 6 only)		
X	no basket		



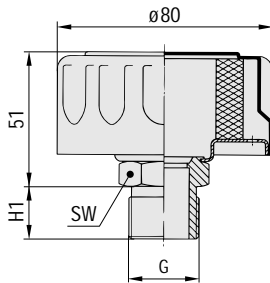
Area of Application:
Tank ventilation

Standard Versions:

- Breather cap: Steel, chrome plated
- Socket: Steel, chrome plated
- Air filter insert: 10 µm foam (PUR)
- Thread form: BSP

Custom built combinations and specials are available on request.

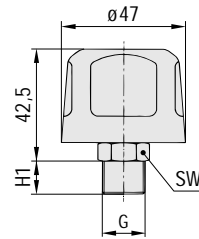
Dimensions SES 5



max Rate of Air Flow:
0,45 m³/min

Type SES 5...	B08	B12	B16
G	G 1/2	G 3/4	G 1
H1	14	19,5	19
SW	22	32	34

Dimensions SES 9



max Rate of Air Flow:
0,4 m³/min

Type SES 9...	B04	B06	B08
G	G 1/4	G 3/8	G 1/2
H1	10,5	12,5	13,5
SW	17	19	22

Ordering Code

SES 5 - 10 - B12 - O - W

Type		Metal cap design	
SES	Breather	O	chrome-plated (standard)
Cap size		W	
5	80 mm	black epoxy	
9	47 mm	Dipstick	
Micron rating		O	
03	3 µm paper (for SES 5 only)	none (standard)	
10	10 µm foam (PUR) (standard)	Dxxx	
40	40 µm foam (PUR)	Dipstick (on request)	
Thread			
B04	G 1/4 (SES 9 only)		
B06	G 3/8 (SES 9 only)		
B08	G 1/2		
B12	G 3/4		
B16	G 1		



Area of Application:

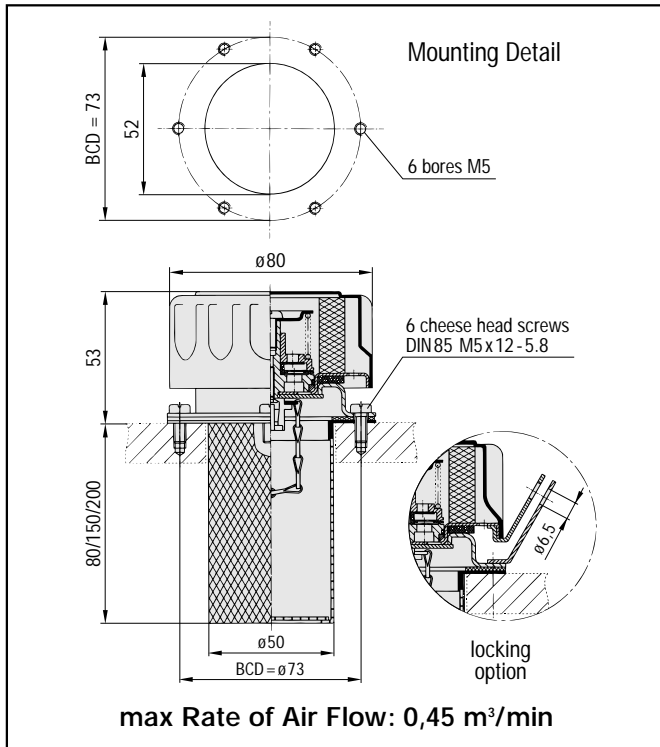
Ventilation and tank filling with tank stress

Standard Versions:

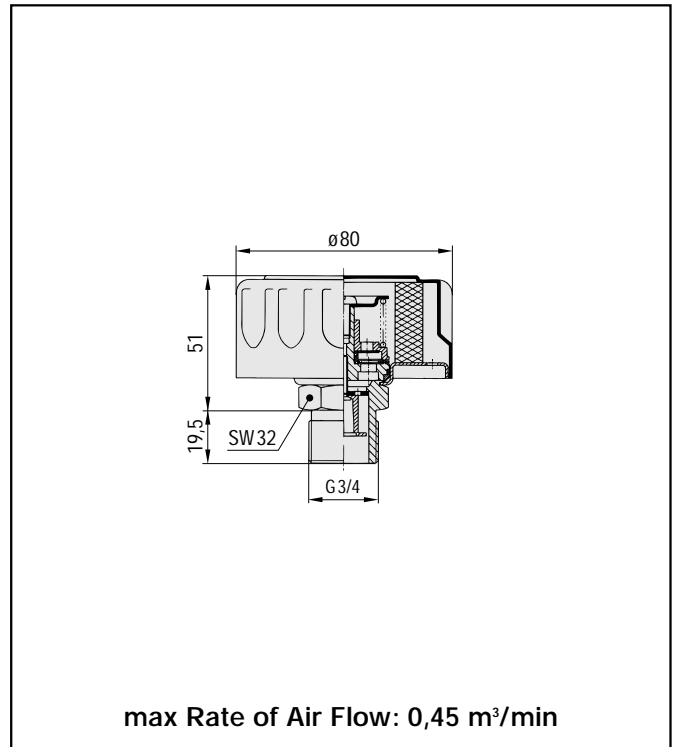
- Breather cap: Steel, chrome-plated
- Socket: Steel, chrome-plated
- Air filter insert: 10 µm foam (PUR)
- SES 7 Basket: Steel, zinc plated
Basket Micron rating: 300 µm
Gaskets: NBR
- SES 8 Thread form: BSP

2 pressure versions (0,35 bar and 0,7 bar) available

Dimensions SES 7



Dimensions SES 8



Ordering Code

SES 7 - 10 - 05 - S080 - O - L - W

Type	SES Filler breather	Metal cap design	O chrome-plated (standard) W black epoxy
Designation	7 pressurised filler breather, bayonet style 8 pressurised breather, screw-in style	Accessories	O none L locking option (for SES 7 only)
Micron rating	03 3 µm paper (for SES 7 only) 10 10 µm foam (PUR) (standard) 40 40 µm foam (PUR)	Dipstick	O none (standard) Dxxx Dipstick (on request)
Opening pressure	05 0,35 bar (5 PSI) 10 0,70 bar (10 PSI)	Adaption	S080 Basket 80 mm (standard) (SES 7) S150 Basket 150 mm (SES 7) S200 Basket 200 mm (SES 7) B12 Thread G ³ / ₄ (SES 8) X no basket (SES 7)



Area of Application:

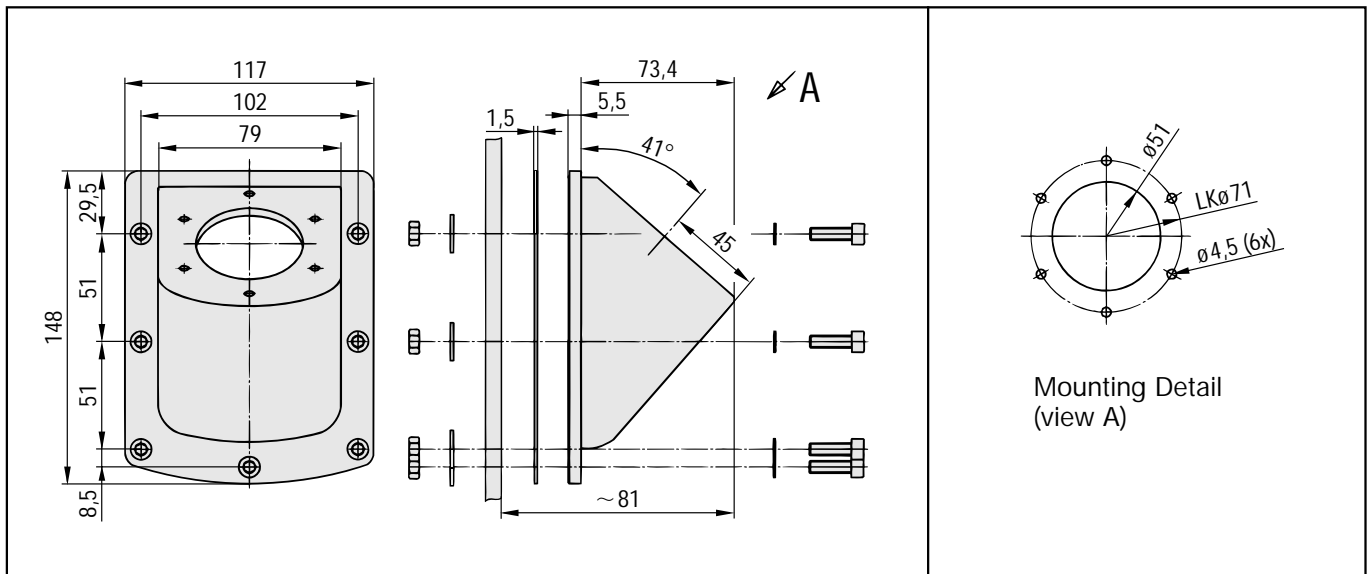
Lateral fastening of filler breathers (suitable with SES 3, SES 7 and SPB 5) with flange connection

Materials:

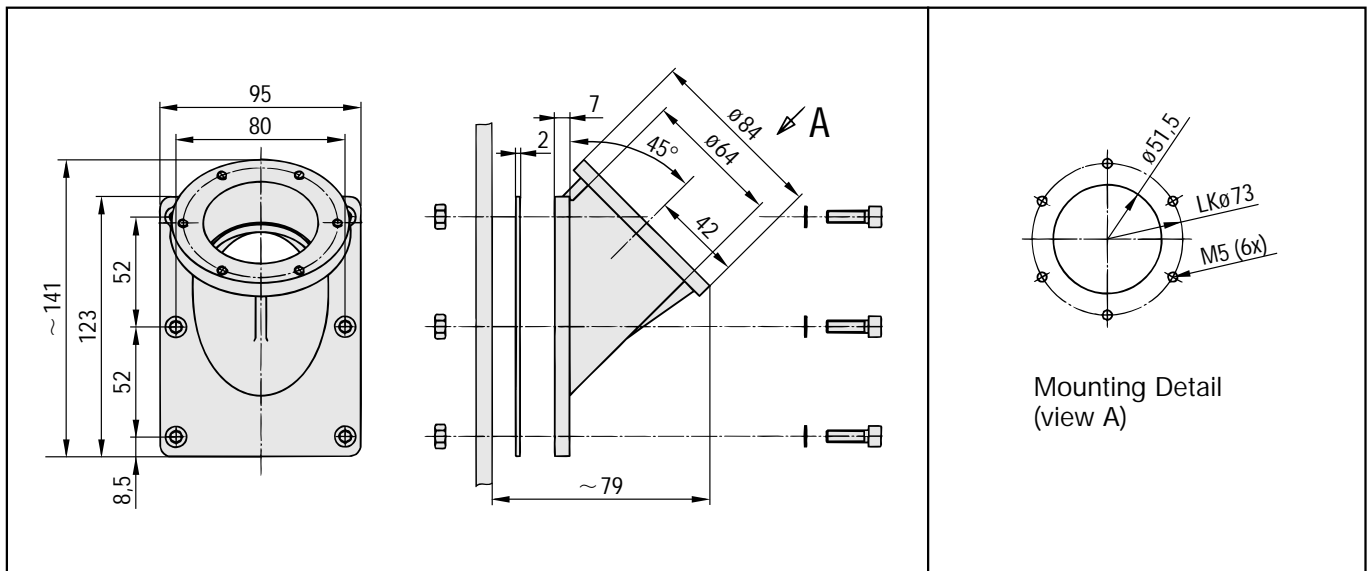
	SES-ASMB-1	SES-ASMB-2
• Housing:	Polyamide	Aluminium
• Seals:	Klingerit	Klingerit
• Screws:	Steel, zinc plated M6 x 25 DIN 912	Steel, zinc plated M6 x 25 DIN 912
• Nuts:	Steel, zinc plated M6 DIN 934	Steel, zinc plated M6 DIN 934
• Washers:	Steel, zinc plated	Steel, zinc plated
• Mounting screws:	Steel, zinc plated 4,8x13 DIN 7981	

Seals, screws, washers and nuts are supplied with the SES-ASMB as standard

Dimensions SES-ASMB-1

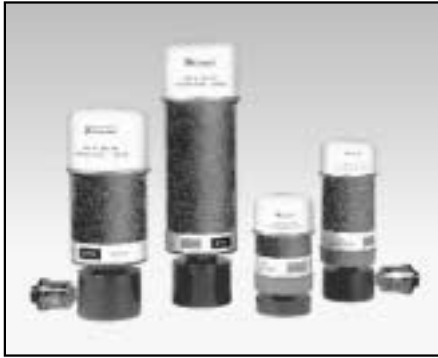


Dimensions SES-ASMB-2



Ordering Code

SES-ASMB-1		
Type	SES-ASMB	Angled side Mounting Bracket for SES 3, SES 7 and SPB 5
Version	1	Housing polyamide
	2	Housing aluminium



Area of Application:

Ventilation and moisture absorption

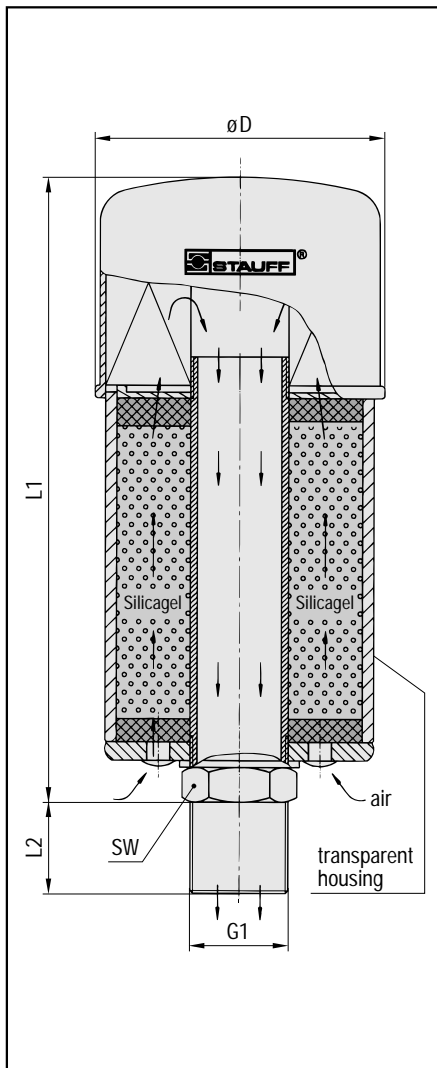
Characteristics:

- available in 4 sizes
- Temperature range: 70°C max
- refillable with drying agent (silica gel; available separately)
- can be delivered complete with adaptor plates and contamination indicator
- replacement air filter insert SGB separately available (see page 22)

Easy hygroscopic indication is possible with the drying agent's capability to change colours with increasing moisture.

Dimensions

	SDB-093	SDB-096	SDB-121	SDB-122
D	100	100	132,5	132,5
L1	159,5	228	266,5	375
L2	20	20	min 25	min 25
G1	G ^{3/4}	G ^{3/4}	G1 ^{1/4}	G1 ^{1/4}
SW	32	32	50	50



Hygroscopic indication

As moisture is absorbed, the silica gel granules will gradually change colour from a deep blue to pink.

When the granules have become pink, replace them.

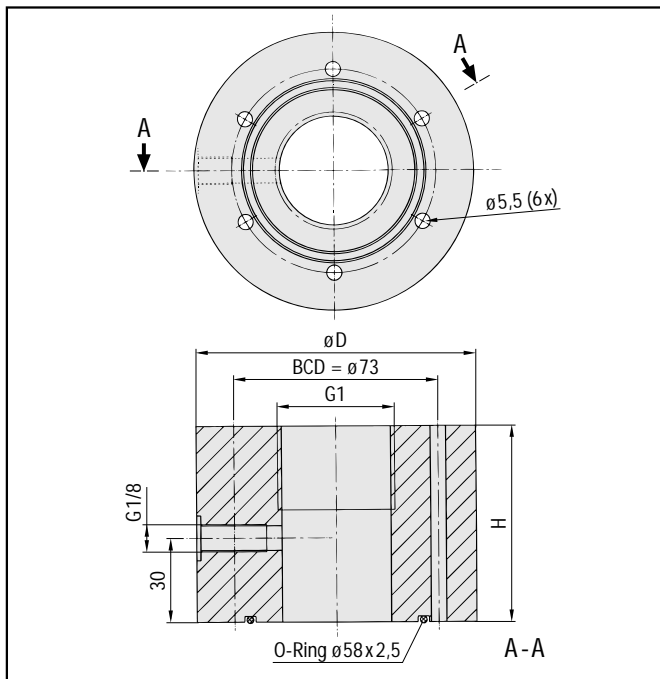
Note:

At the bottom, desiccant air breathers are sealed with a folio and a plastic plug. Both must be removed before installation!

Technical Data

	SDB-093	SDB-096	SDB-121	SDB-122
max Rate of air flow (m ³ /min)	0,5	0,5	1,25	1,25
Air filter micron rating (µm)	3	3	3	3
Weight (g)	850	1100	2700	4000
Connection thread (BSP)	G ^{3/4}	G ^{3/4}	G1 ^{1/4}	G1 ^{1/4}
Silica gel filling weight (g)	225	450	750	1500
max hygroscopicity (g)	72	144	240	480

Adaptor Plates AP



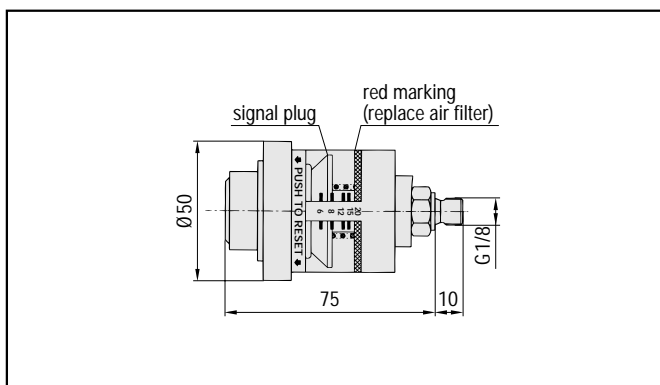
With AP plastic adaptor plates desiccant air breathers can directly be mounted to existing connections.

Plug, O-ring and socket cap screws (DIN 912) are supplied with AP as a standard.

Dimensions

	AP-1	AP-2
D	88	100
H	50	70
G1	G 3/4	G 1 1/4

Contamination Indicator FM



Adaptor plates AP are provided with a thread connection for the optical contamination indicator FM. The FM indicates the contamination level of the air breather SGB. You can restore the indicator by pressing the RESET knob for re-use.

Ordering Code

SDB - 122 - AP - FM

Type		Contamination indicator (in conjunction with AP only)		
SDB	Desiccant air breather	(none) without contamination indicator		
		FM optical contamination indicator		
Size		Adaptor plate		
093	096	121	122	(none) without adaptor plate
				AP with adaptor plate

Spare parts	
AP-1	adaptor plate for SDB-093/096
AP-2	adaptor plate for SDB-121/122
FM	contamination indicator for all sizes
RD-093	Silica gel refilling material for SDB-093
RD-096	Silica gel refilling material for SDB-096
RD-121	Silica gel refilling material for SDB-121
RD-122	Silica gel refilling material for SDB-122
SGB-090-03-B	Replacement air filter insert for SDB-093/096
SGB-120-03-B	Replacement air filter insert for SDB-121/122



Area of Application:

Tank ventilation

Characteristics:

- Standard micron rating: 3 µm glass fibre
- Rate of air flow
 SGB-090: 0,5 m³/min.
 SGB-120: 1,5 m³/min.

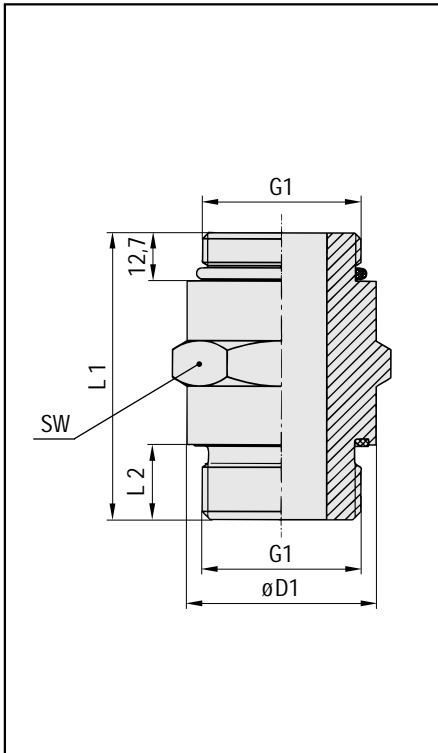
- Adaptors*
 TBA-075-B for SGB-090
 TBA-125-B for SGB-120

Also, SGB are designed to be used as air filters for STAUFF desiccant breathers (see pages 20 and 21).

*** Adaptors**

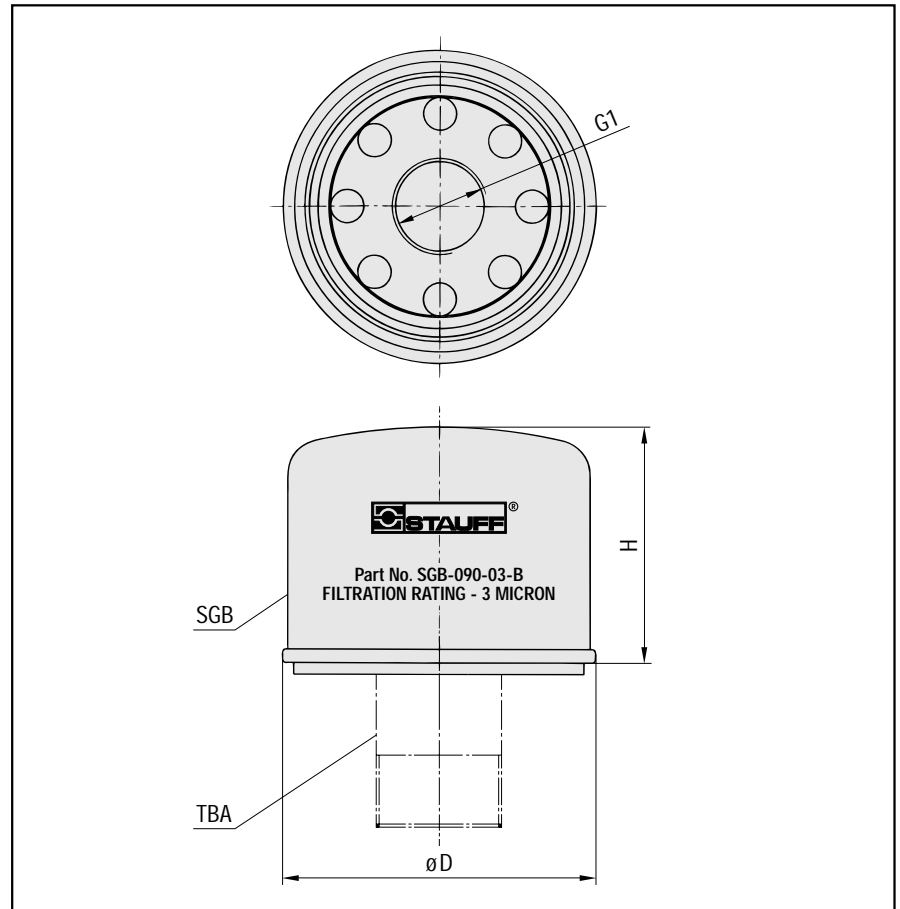
On request, screw-in adaptors for giant breathers SGB-090 and SGB-120 are available in combination with giant air breathers.

Dimensions TBA



Type	L1	L2	G1	D1	SW	O-Ring
TBA-075-B	57	16	G ³ / ₄	32	32	ø 23,5 x 3
TBA-125-B	76	20	G1 ¹ / ₄	50	50	ø 38,5 x 3

Dimensions SGB

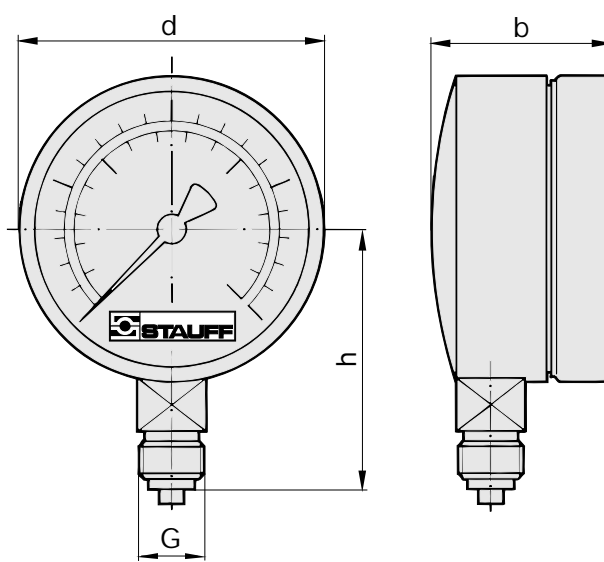


Type	D	H	G1
SGB-090	100	64	G ³ / ₄
SGB-120	132,5	104	G1 ¹ / ₄

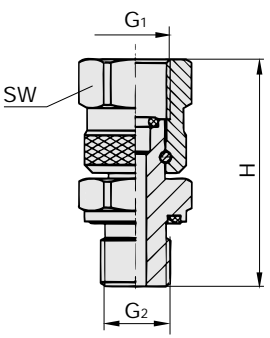
Ordering Code

SGB - 090 - 03 - B - A

Type	Adaptor option	
SGB Giant air breather	(none) without adaptor	
	A with adaptor TBA	
Version	Thread form	
090 SGB-090	B BSP	
120 SGB-120		
	Micron rating	
	03 3 µm (standard)	

	d	b	h	Pressure range [bar]	Order No.	
					G = G ^{1/4}	G = 1/4 NPT
	63	36	53	-1 ... +3	SMM-G ^{1/4} -1-3 BAR	SMM-1/4 NPT--1-3 BAR
				10	SMM-G ^{1/4} -10 BAR	SMM-1/4 NPT-10 BAR
				16	SMM-G ^{1/4} -16 BAR	SMM-1/4 NPT-16 BAR
				25	SMM-G ^{1/4} -25 BAR	SMM-1/4 NPT-25 BAR
				40	SMM-G ^{1/4} -40 BAR	SMM-1/4 NPT-40 BAR
				60	SMM-G ^{1/4} -60 BAR	SMM-1/4 NPT-60 BAR
				100	SMM-G ^{1/4} -100 BAR	SMM-1/4 NPT-100 BAR
				160	SMM-G ^{1/4} -160 BAR	SMM-1/4 NPT-160 BAR
				250	SMM-G ^{1/4} -250 BAR	SMM-1/4 NPT-250 BAR
				400	SMM-G ^{1/4} -400 BAR	SMM-1/4 NPT-400 BAR
600	SMM-G ^{1/4} -600 BAR	SMM-1/4 NPT-600 BAR				
	d	b	h		G = G ^{1/2}	G = 1/2 NPT
<p>Other entries on request Stainless steel version: see catalogue "Stauff Hydraulic Accessories"</p>	100	53,5	87	-1 ... +3	SMM-G ^{1/2} -1-3 BAR	SMM-1/2 NPT--1-3-BAR
				10	SMM-G ^{1/2} -10 BAR	SMM-1/2 NPT-10 BAR
				16	SMM-G ^{1/2} -16 BAR	SMM-1/2 NPT-16 BAR
				25	SMM-G ^{1/2} -25 BAR	SMM-1/2 NPT-25 BAR
				40	SMM-G ^{1/2} -40 BAR	SMM-1/2 NPT-40 BAR
				60	SMM-G ^{1/2} -60 BAR	SMM-1/2 NPT-60 BAR
				100	SMM-G ^{1/2} -100 BAR	SMM-1/2 NPT-100 BAR
				160	SMM-G ^{1/2} -160 BAR	SMM-1/2 NPT-160 BAR
				250	SMM-G ^{1/2} -250 BAR	SMM-1/2 NPT-250 BAR
				400	SMM-G ^{1/2} -400 BAR	SMM-1/2 NPT-400 BAR
600	SMM-G ^{1/2} -600 BAR	SMM-1/2 NPT-600 BAR				

Adjustable Gauge Fitting EMV

	G ₁	G ₂	H	SW	Order No.	
					NBR	FPM
	G ^{1/4}	G ^{1/4}	42	19	EMV-G ^{1/4} -P-OR-PC	EMV-G ^{1/4} -V-OR-VC
	G ^{1/4}	G ^{1/2}	47	19	EMV-G ^{1/4} /G ^{1/2} -P-OR-PC	EMV-G ^{1/4} /G ^{1/2} -V-OR-VC
	G ^{1/2}	G ^{1/4}	51	27	EMV-G ^{1/2} /G ^{1/4} -P-OR-PC	EMV-G ^{1/2} /G ^{1/4} -V-OR-VC
	G ^{1/2}	G ^{1/2}	55,5	27	EMV-G ^{1/2} -P-OR-PC	EMV-G ^{1/2} -V-OR-VC



Area of Application: mechanical pressure measurement

Characteristics:

- suitable for hydraulic oil and gaseous media that do not attack any copper base alloy
- available in nominal sizes 63 and 100
- standard thread form: BSP
- housing made out of stainless steel (1.4301)
- sight glass made out of acrylic
- glycerine filled
- standard dual scales with pressure indication in bar and PSI
- U-bolt or flange mounting kit on request

Please consult our office before you use SPG with other media.

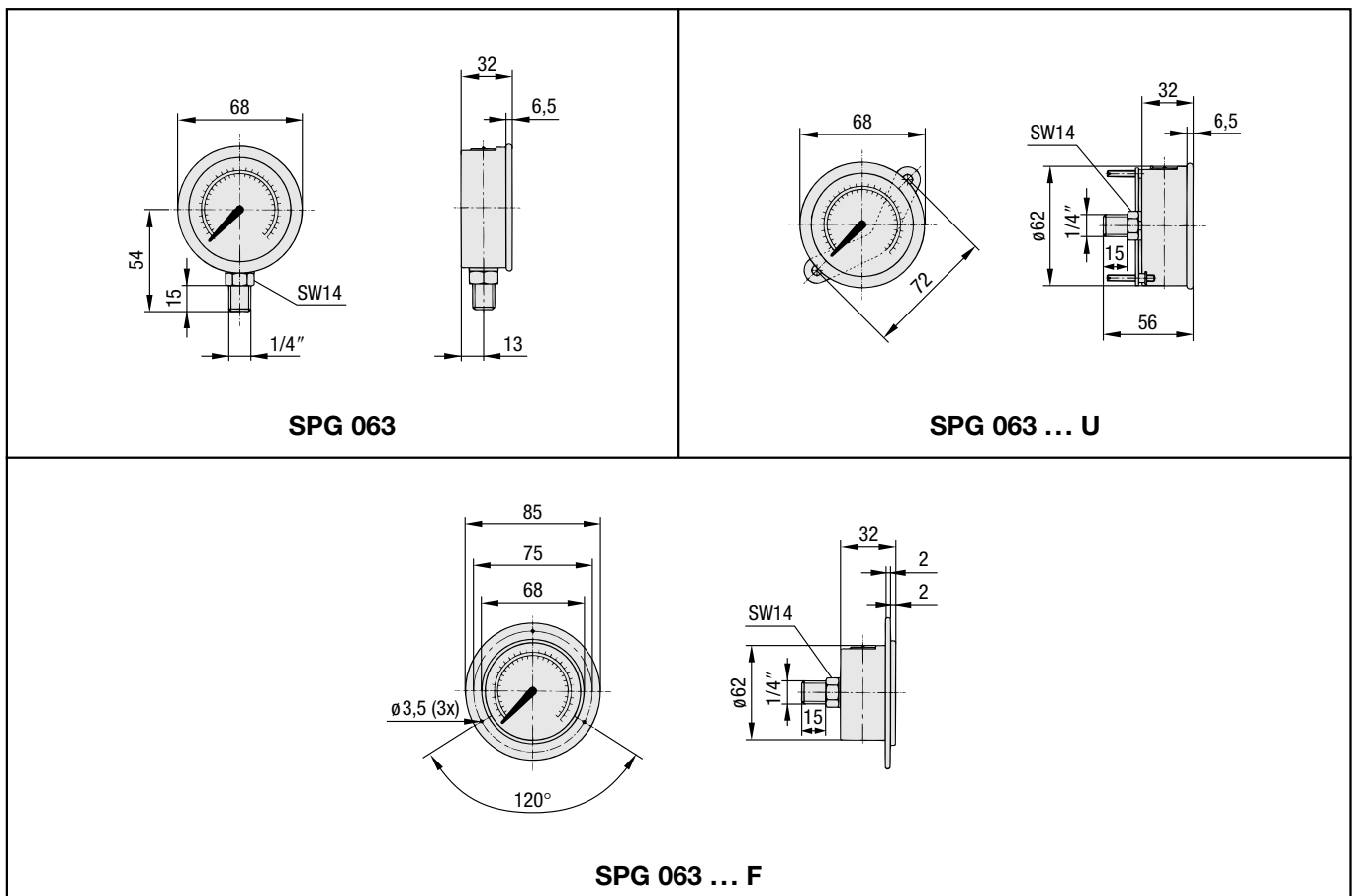
Technical Data:

System of protection: IP 65 (EN 60 529 / IEC 529)
 Accuracy class SPG-063: 1.6 ($\pm 1,6\%$ FS as per EN 837-1)
 Accuracy class SPG-100: 1.0 ($\pm 1,0\%$ FS as per EN 837-1)
 environmental temp. range: $-20^{\circ}\text{C} \dots +60^{\circ}\text{C}$
 temperature range medium: max $+60^{\circ}\text{C}$

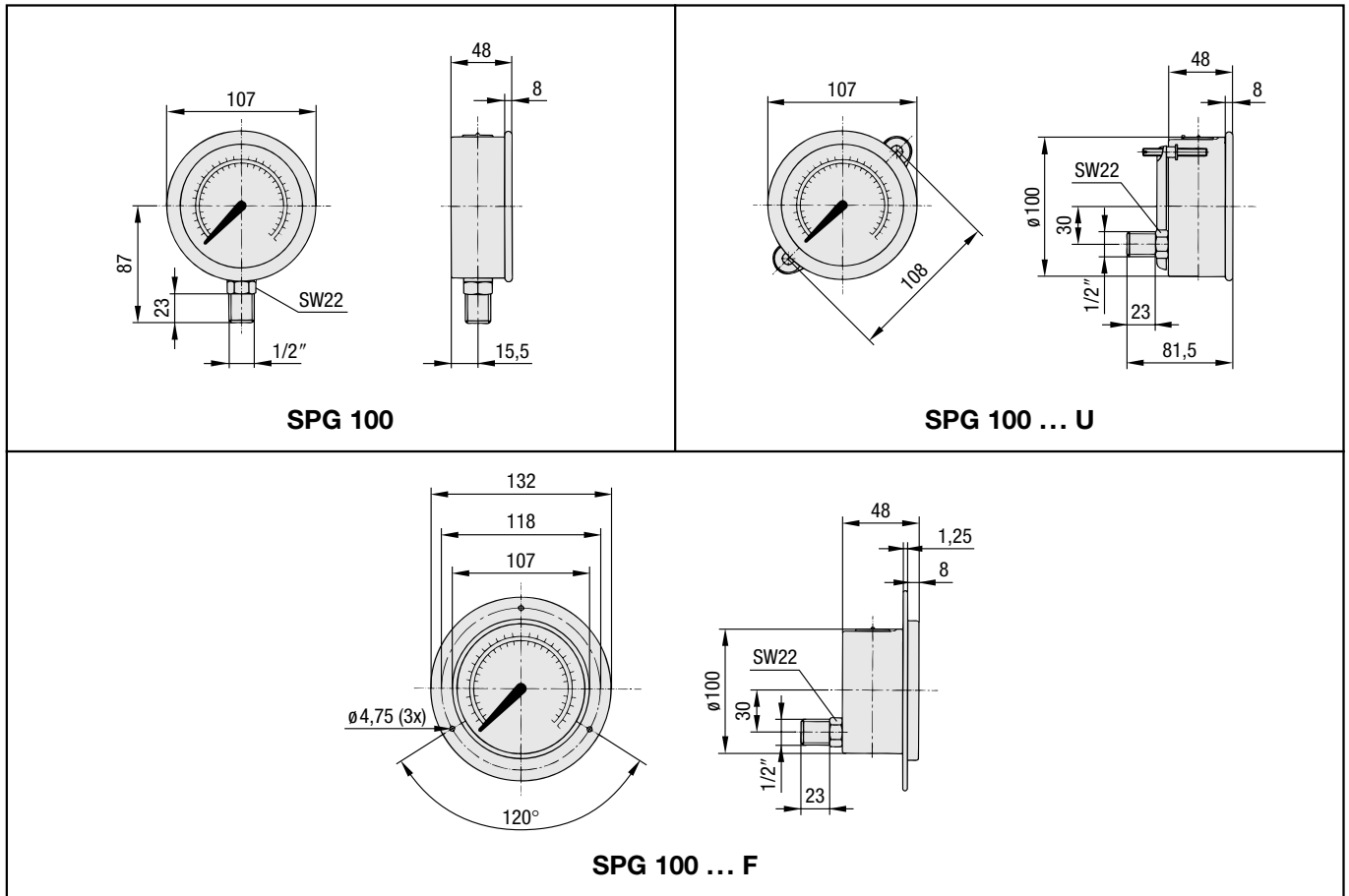
Options (on request):

- additional scale readings including personalisation
- thread form NPT
- U-bolt and flange mounting kits are available separately as spare parts
- additional pressure ranges up to 1.000 bar max

Dimensions SPG 063



Dimensions SPG 100



Ordering Code

SPG 063 - 0-160 - 1 - R - B - U

Type		Accessories (for rear entry only)	
SPG	Stainless steel pressure gauge	(none)	no accessory
Size		U	U-bolt assembly
063	63 mm with G ^{1/4} or 1/4 NPT connection	F	Front flange assembly
100	100 mm with G ^{1/2} or 1/2 NPT connection	Thread size	
Pressure range		B	BSP (G ^{1/4} or G ^{1/2}) (standard)
-1 - 1,5	(-1) - 1,5 bar / 21 PSI	N	NPT (1/4 NPT or 1/2 NPT) (only on request)
-1 - 3	(-1) - 3 bar / 42 PSI	Adaption	
0 - 10	0 - 10 bar / 145 PSI	S	Stem mounting
0 - 16	0 - 16 bar / 230 PSI	R	Rear mounting
0 - 25	0 - 25 bar / 360 PSI	Style of scales	
0 - 40	0 - 40 bar / 580 PSI	1	BAR/PSI (bar outside / PSI inside)
0 - 60	0 - 60 bar / 850 PSI		
0 - 100	0 - 100 bar / 1.450 PSI		
0 - 160	0 - 160 bar / 2.300 PSI		
0 - 250	0 - 250 bar / 3.600 PSI		
0 - 400	0 - 400 bar / 5.800 PSI		
0 - 600	0 - 600 bar / 8.500 PSI		
0 - 680	0 - 680 bar / 10.000 PSI		
0 - 700	0 - 700 bar / 10.000 PSI		
0 - 1000	0 - 1000 bar / 14.500 PSI		



Area of Application:

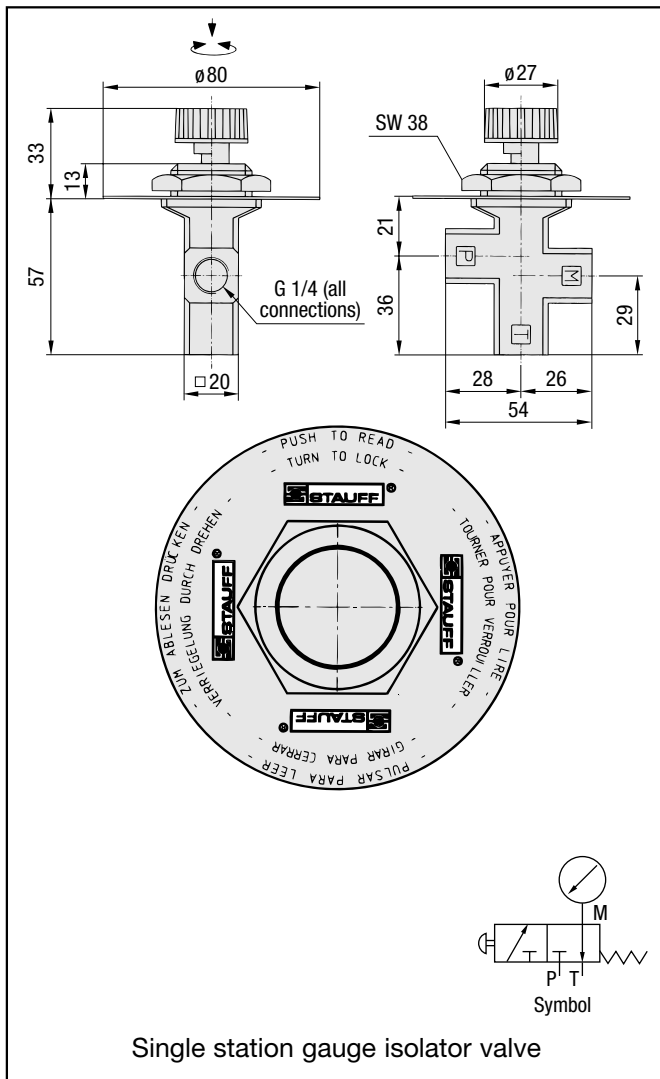
protection against pressure gauge overload (single station) or 6 position pressure measurement (multi-station)

Characteristics:

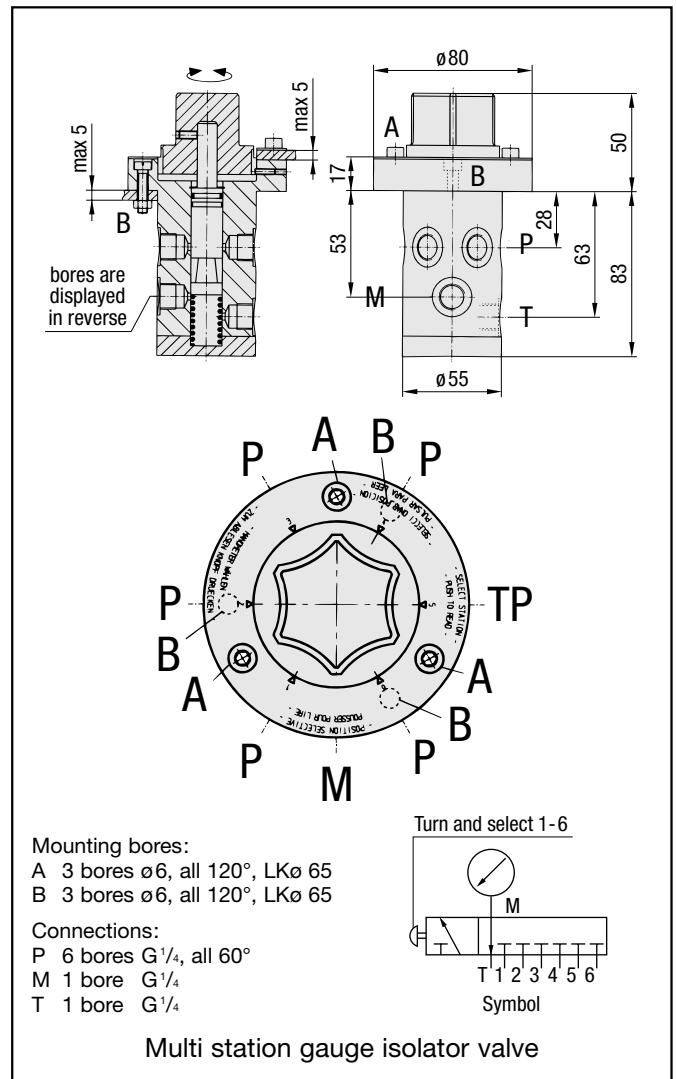
- suitable for hydraulic fluids
- max operating pressure: 350 bar
- connection thread size: G 1/4; 1/4 NPT for single station valves on request
- temperature range: 100°C max
- complete with operation manual (plate mounted to the product)

Please consult our office before you use SWS with other fluids.

Dimensions SWS-B04-S1



Dimensions SWS-B04-M



Ordering Code

SWS - B04 - S1											
<table border="1"> <tr> <th colspan="2">Type</th> </tr> <tr> <td>SWS</td> <td>Gauge isolator valve</td> </tr> </table>	Type		SWS	Gauge isolator valve	<table border="1"> <tr> <th colspan="2">Style</th> </tr> <tr> <td>S1</td> <td>Single station gauge isolator valve</td> </tr> <tr> <td>M</td> <td>multi station gauge isolator valve</td> </tr> </table>	Style		S1	Single station gauge isolator valve	M	multi station gauge isolator valve
Type											
SWS	Gauge isolator valve										
Style											
S1	Single station gauge isolator valve										
M	multi station gauge isolator valve										
<table border="1"> <tr> <th colspan="2">Adaption thread</th> </tr> <tr> <td>B04</td> <td>G 1/4 (standard)</td> </tr> <tr> <td>N04</td> <td>1/4 NPT (for style "S1" only)</td> </tr> </table>		Adaption thread		B04	G 1/4 (standard)	N04	1/4 NPT (for style "S1" only)				
Adaption thread											
B04	G 1/4 (standard)										
N04	1/4 NPT (for style "S1" only)										



Area of Application:

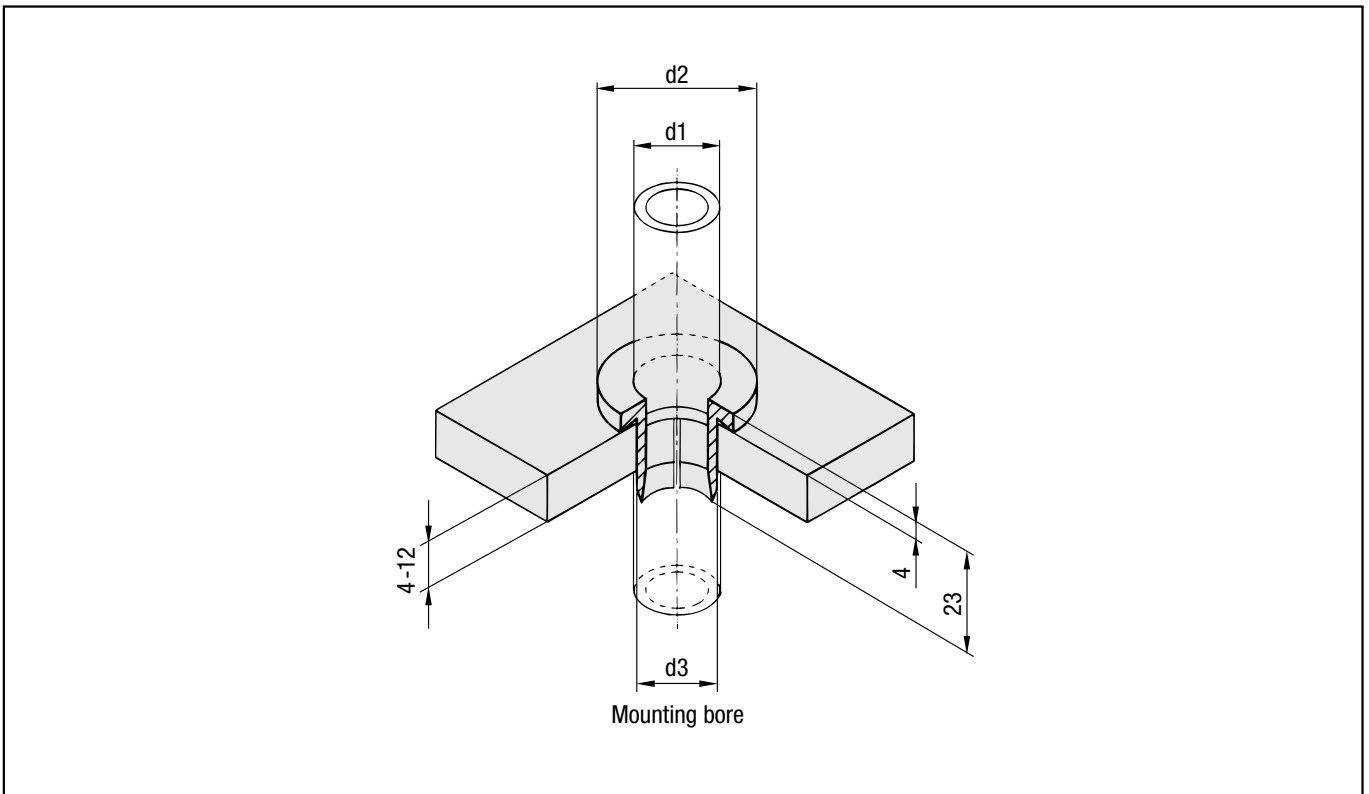
Tubular support and seal for tank entry return lines (ODs from 6 mm up to 42 mm)

Characteristics:

- vibration damping and sound absorbing
- resistant against oil and solvents
- available in santoprene or polypropylene
- A positive bulkhead installation is ensured by a special lip seal.

A remarkable feature of return line bushes is easy installation and they offer assembly costs compared to fittings.

Dimensions



Dimensional Table

Pipe Ø d1	06	08	10	12	14	15	16	18	20	22	25	28	30	35	38	42
d2	18	20	22	24	26	28	28	30	32	34	38	41	43	48	51	55
d3	10	12	14	16	18	20	20	22	24	26	30	33	35	40	43	47

Ordering Code

