



When welding fumes are extracted on a regular, or even continuous, basis considerable quantities of heated air will be extracted together with the welding fumes. From a cost point of view this may not always be acceptable.

The alternative is to clean the extracted air and re-circulate it into the work area. The Euromate Pro-Line range includes several mobile welding fume extractors, which are combined with various extraction arms and filter systems. Mobile units also provide increased flexibility when extracting welding fumes at various work locations and at locations which are not accessible with a fixed installation.



MOBILE WELDING FUME EXTRACTORS



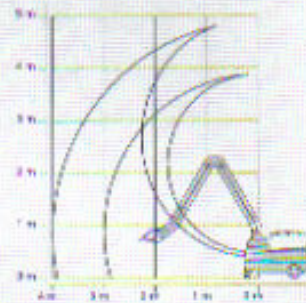
MFD MECHANICAL FILTER

The Euromate MFD mobile welding fume extractor is based on the mechanical DuraFilter® system and can be equipped with Flex and UltraFlex extraction arms. The MFD is designed for infrequent to regular welding operations at various work locations, whereby dry welding fumes are released.

The system is equipped as standard with a clogged filter indicator, which shows whether the extraction is still satisfactory or whether the filter needs to be replaced.



Reach of MFD with (Ultra)Flex 3 and 4



MFD specifications

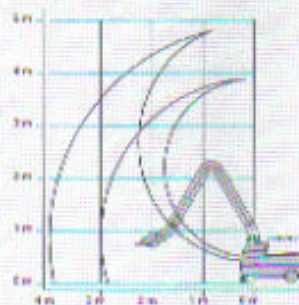
- Impact resistant synthetic housing
- DuraFilter® with SurfacePlus® treatment
- Filter surface area 50 m²
- Filter efficiency up to 99.8%
- Motor power consumption 0.75 kW
- Motor speed 2800 rpm
- Net extraction capacity 1250 m³/h
- Max. noise level 60 dB(A)
- Aluminium spark arrester
- Clogged filter indicator
- Suitable for Flex and UltraFlex extraction arms or flexible hoses, maximum 10 metres long, diameter 200 mm
- Dimensions without extraction arm 1210 x 810 x 900 mm
- Weight 108 kg
- Available in all standard voltages, 1 or 3 phase(s), 50 Hz
- BIA-W3 certificate optional
- Working light and hood switch, or working light and automatic start/stop switching optional
- Activated carbon filter optional

MFS SELF-CLEANING FILTER

The mobile welding fume extraction system with the MFS self-cleaning filter has been specially designed for intensive welding operations with dry welding fumes, executed at various work locations. The MFS utilises the patented RoboClean® cleaning system. RoboClean® operates with compressed air and is equipped accordingly with an external connection as standard. The MFS is also available with a built-in compressor so that the unit can be used anywhere. The MFS can also be equipped with Euromate Flex or UltraFlex extraction arms.



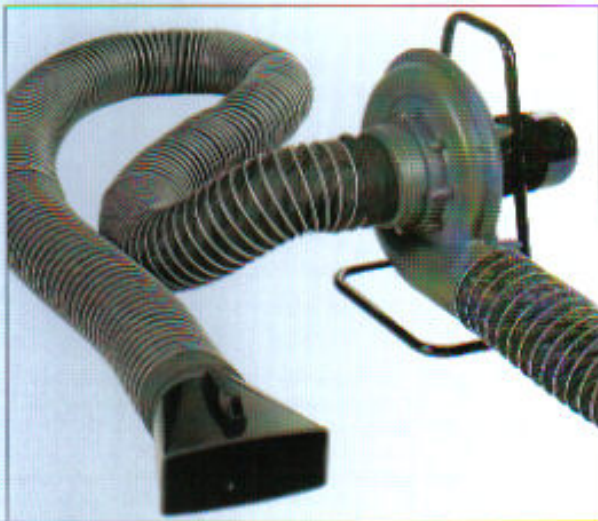
Reach of MFS with (Ultra)Flex 3 and 4



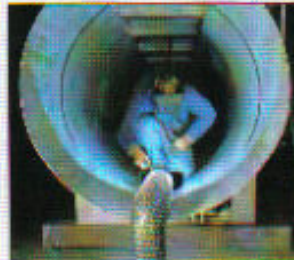
MFS specifications

- Impact resistant synthetic housing
- RoboClean® automatic filter cleaning
- Cartridge filter with SurfacePlus® treatment
- Filter surface area 30 m²
- Filter efficiency up to 99.8%
- Motor power consumption 0.75 kW
- Motor speed 2800 rpm
- Net extraction capacity 1250 m³/h
- Max. noise level 69 dB(A)
- Aluminium spark arrester
- Compressed air connection 4-5 bar
- Available with built-in compressor (optional)
- Suitable for Flex and UltraFlex extraction arms or flexible hoses, maximum 10 metres long, diameter 200 mm
- Dimensions without extraction arm 1210 x 810 x 1020 mm
- Weight 130 kg
- Available in all standard voltages, 1 or 3 phases, 50 Hz
- MFS/C: 3 phases + N
- BIA-W2 certificate optional
- Working light and hood switch, or working light and automatic start/stop switching optional

MNF PORTABLE FAN



Sometimes welding operations take place in confined spaces, e.g. pipe structures or tanks, or at excessive heights, e.g. on assembled steel structures. In these cases the use of a mobile extraction unit is not practical and the work location cannot be accessed with a fixed unit. This is why the Pro Line range includes a portable fan, which can be combined with flexible extraction and exhaust hoses.



MNF specifications

- Motor power consumption 0.75 kW
- Motor speed 2900 rpm
- Unrestricted air flow 2400 m³/h
- Max. noise level 69 dB(A)
- Weight 17 kg
- Available in all standard voltages, 1 or 3 phases, 50 Hz
- Motor protection switch (MPS) optional

FLEXIBLE HOSES



This type of flexible hose is made of synthetic material and reinforced with an external metal spiral. The extraction hose is equipped as standard with a suction nozzle, fitted with a magnetic foot. This is used to fix the welding fume extractor close to the welding area. The extraction hose is available in a version which fits the MNF portable fan and another type for mobile units. Hoses can be combined with coupling pieces. As a guide the maximum extension for mobile units is ten metres, for the MNF it is twenty metres.

Hose specifications

Extraction hose:

- Synthetic with external metal spiral reinforcement, wear resistant
- Extraction nozzle with magnetic foot
- Actual hose diameter 203 mm for mobile units
- Actual hose diameter 160 mm for MNF portable fan
- Length 5 metres
- Equipped with two hose clamps

Exhaust/extension hose:

- Synthetic with external metal spiral reinforcement, wear resistant
- Actual hose diameter 203 mm for mobile units
- Actual hose diameter 160 mm for MNF portable fan
- Length 5 metres
- Coupling piece with hose clamp
- Maximum hose length on mobile units 10 metres, on MNF portable fan 20 metres

Modern technology: the heart of the Euromate Pro Line range



DualFilter



RoboClean



Electrostatic Filter

The DualFilter cartridge filter has an effective surface area of no less than 60 m². Its special structure and SurfacePlus[®] treatment guarantees high filter efficiency and a long lifespan. This keeps the operational cost for the filter system to a minimum. The system is suitable for dry welding fumes.

RoboClean is a self-cleaning filter system whereby the filter sections are periodically purged with air pulses from a pressure vessel. The extraction capacity remains constant, even during intensive use. The residue is collected in a collector. The cartridge filter has an effective surface area of 30 m² and is treated in accordance with the SurfacePlus[®] method. This ensures high filter efficiency and a long lifespan. The system is suitable for dry welding fumes.

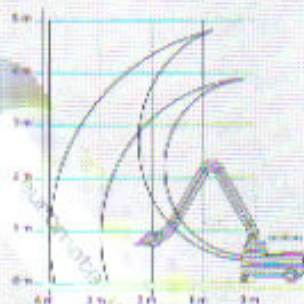
The electrostatic filter is made up of three sections, i.e. a mechanical pre-filter, an ioniser where the polluted particles are charged, and a collector with an effective surface area of 14.2 m². The collector is equipped with electrically charged plates which attract the polluted particles. The purified air is re-circulated via an after filter. The system is particularly suitable for the extraction of welding fumes released during the processing of oil treated steel.

MFE ELECTROSTATIC FILTER

The MFE is eminently suitable for the extraction of welding fumes originating from oil treated steel.

The open filter structure ensures a constant suction level. The aluminium filter cell is easy to clean and the filters do not have to be replaced. Using the convenient slide system the filter can be removed quickly and easily and, because of regular maintenance, the efficiency of the filter remains high.

Reach of MFE with
UltraFlex 3 and 4



MFE specifications

- Impact resistant synthetic hose top
- Euromate electrostatic filter system, easy clean
- Collector surface area 14.2 m²
- Filter efficiency up to 99%
- Motor power consumption 0.75 kW
- Motor speed 2900 rpm
- Hot extraction capacity 1300 m³/h
- Max. noise level 69 dB(A)
- Aluminium spark arrester
- High voltage indicator light
- Suitable for Flex and UltraFlex extraction arms or flexible hoses, maximum 10 metres long, diameter 200 mm
- Dimensions without extraction arm 1210 x 810 x 900 mm
- Weight 145 kg
- Available in all standard voltages, 1 or 3 phase/50 Hz
- Working light and hood switch, or working light and automatic start/stop switching optional
- Activated carbon filter optional



Service

Euromate suppliers have wide ranging technical (welding) know how and meet the strict Euromate training standards. Where necessary they can refer back to Euromate's long term international experience. Together with other data the nature of the welding operations, the welding processes used, the applicable legislation and the annual use of consumables are the basis for professional and expert advice, combined with practical and personal service.

Euromate B.V.
Wazekkoog 11
1822 BL Alkmaar - Holland
Tel. +31 72 5640634
Fax +31 72 5644469
E-mail: info@euromate.nl
Internet: www.euromate.com

Lucomex B.V.
Arnbachtweg 7
4854 MK Bavel-Brada - Holland
Tel. +31 161 438410
Fax +31 161 438432
E-mail: info@lucom.nl
Internet: www.lucom.nl

Euromate GmbH
Siemensring 44 i
47877 Willich - Germany
Tel. +49 2154 4994110
Fax +49 2154 4996120
E-mail: info@euromate.de
Internet: www.euromate.de

Euromate beba
Boomssteenweg 49B
2610 Wilrijk-Antwerp - Belgium
Tel. +32 3 7420000
Fax +32 3 7442642
E-mail: info@euromate.be
Internet: www.euromate.be



Why Euromate?

- Attractive price-performance ratio
- Innovative and reliable technology
- Comprehensive range
- ISO 9002 quality guarantee
- Professional advice for tailor made solutions
- Fast and reliable service

Which solution?

- Dry welding fumes, standard welding operations:
MFD mechanical DuraFilter®
- Dry welding fumes, intensive welding operations:
MFS self-cleaning RoboClean® filter
- Welding operations on oil treated steel:
MFE electrostatic filter
- Welding operations in vessels and other confined spaces:
MNF portable fan