



MARINE

Subsea Intervention Daughter Craft

The KD Marine Daughter Craft DC01 and DC02 provides an enhanced and highly efficient access system for divers or ROVs around offshore production installations and facilities. It also facilitates diving to be performed from non diving support vessels.

As well as being able to access difficult and remote positions they can also facilitate simultaneous working on multiple work faces thus increasing productivity.



Main Particulars

LoA 12.02m
BoA 3.6m
Draft 0.72m
Displacement/Weight 10t
Road transportable
Forklift handlable in light weight cradle
Davit launch and recovery via MacGregor/Hydramarine davit
Hydraulic towing boom
12t Henriksen auto release hook

Approvals/Standards

Year Built 2009
MCA Category 3
Lloyds Register certified design and construction
IMCA Marine M 189
IMCA Diving D 018, D 040

Performance/Capacities

Speed appx 12 knts
Maximum operating sea state 2.5m
Max L&R sea state 3m
Self righting capability
Fuel 300 ltr in 2 x 150 ltr tanks
Diving Gas 120m3 in 12 x 50ltr 200 bar
Emergency air 10m3 in 1 x 50ltr 200bar
Max PoB 12

Machinery

2 x Cummins MerCruiser 1.7 MJ 120hp Jets
1 x Cummins Onan 4.0MDKBH 4kW/4kVA, 18.2 amps 220 v generator
2 x battery charging alternators 12 v DC
1 x 160 AH 12 v DC battery
1 x 65 AH 12 v DC battery
Electric and manual bilge pumps

Communications/Instrumentation

1 x Icom 88 channel VHF IC-M505 class D DSC
1 x Icom 88 channel VHF IC-411 class D DSC
1 x waterproof mobile VHF IC-M71
1 x Icom 256 channel UHF IC-F610
1 x Deck PA
1 x Furno 1832 Radar
1 x Echomax Radar reflector
1 x Plastimo quartz clock and barometer
2 x Compass 1 x Danfoth A154 86 mm & 1x Silva 73R

Lifesaving/Safety Equipment

Man overboard/diver recovery hoist
12 man life raft with hydrostatic release
Light weight evacuation stretcher
Oxygen resuscitation set
Installed Pyrogen fire suppression system
Portable fire fighting appliances and pumps
2 x Crowcon multi gas alarms
MCA approved Pyrotechnics and signals
MCA & DMAC first aid kits
12 MCA approved life jackets and immersion suits
2 x life buoys
2 x Work harnesses and lanyards
Installed emergency breathing system for 12 PoB

Accommodation/Facilities

Heated and ventilated wheel house
Screen demist and wipers
Anti-glare windows
Retractable diver's ladder
WC compartment
Seating, seat belts and PPE for all PoB
Deck flood lights
Cargo lashing points

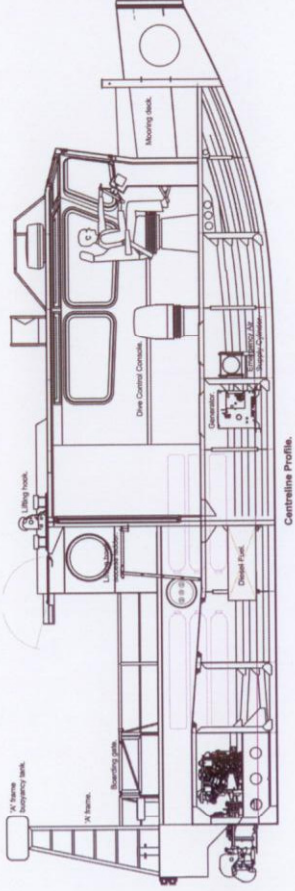
Diving Equipment

Built in 3 diver Nitrox/Air panel
Analox Oxygen analysers
1 x Nautronix 3520 Diver/Deck communications
Divers dressing-in chair
3 x 50-70m Diver umbilicals
3 x Kongsberg Sea Hawk Helmet mounted CCTV systems
2 x Panasonic DVRs and monitors
Support Equipment
Resupply cables and hoses
Mooring hawsers and fenders
Containerised suit drying and changing facilities
Containerised Haskell gas transfer pump
Containerised Twin Lock DDC
Containerised work shops and stores

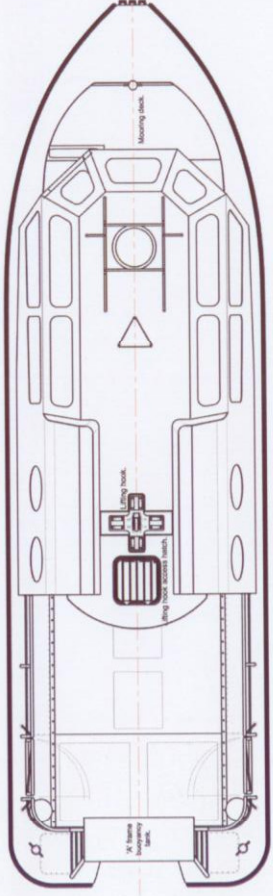
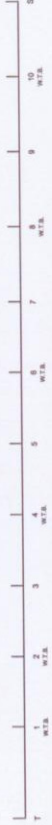
Safe • Reliable • Competent • Cost Effective



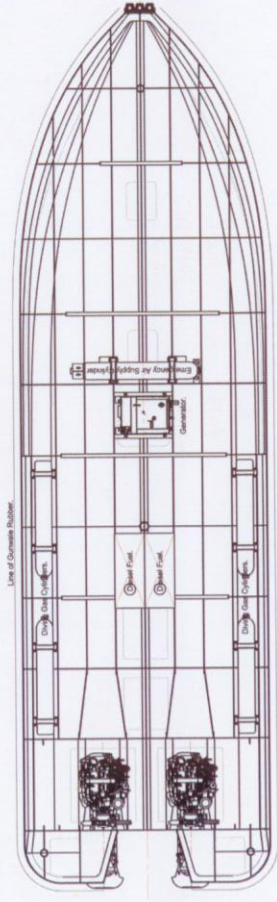
MARINE



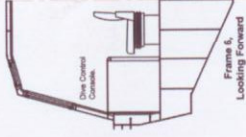
Centreline Profile.



Plan Above Deck.



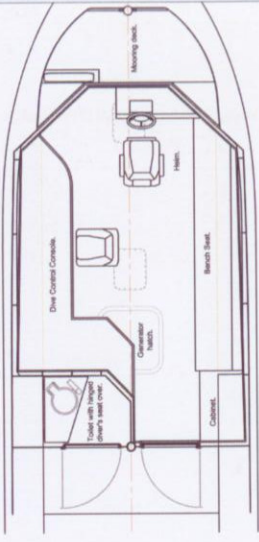
Plan Below Deck.



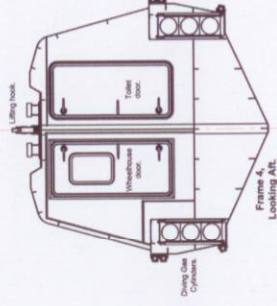
Frame 5,
Looking Forward

Principal Particulars

- Moulded Hull Length 11.65 Metres
- Breadth Moulded 3.25 Metres
- Depth Moulded (to wall deck) 1.10 Metres
- Overall Length (over tenders) 12.05 Metres
- Breadth Overall (over tenders) 3.60 Metres
- Total Installed Power 2 x 120 b.h.p.
- Full Load Draught (about) 0.72 Metres
- Full Load Displacement (about) 10 Tonnes



Wheelhouse.



Frame 4,
Looking Aft.

