

# Kingbright

## Optoelectronic Components



**Light Pipe** 92

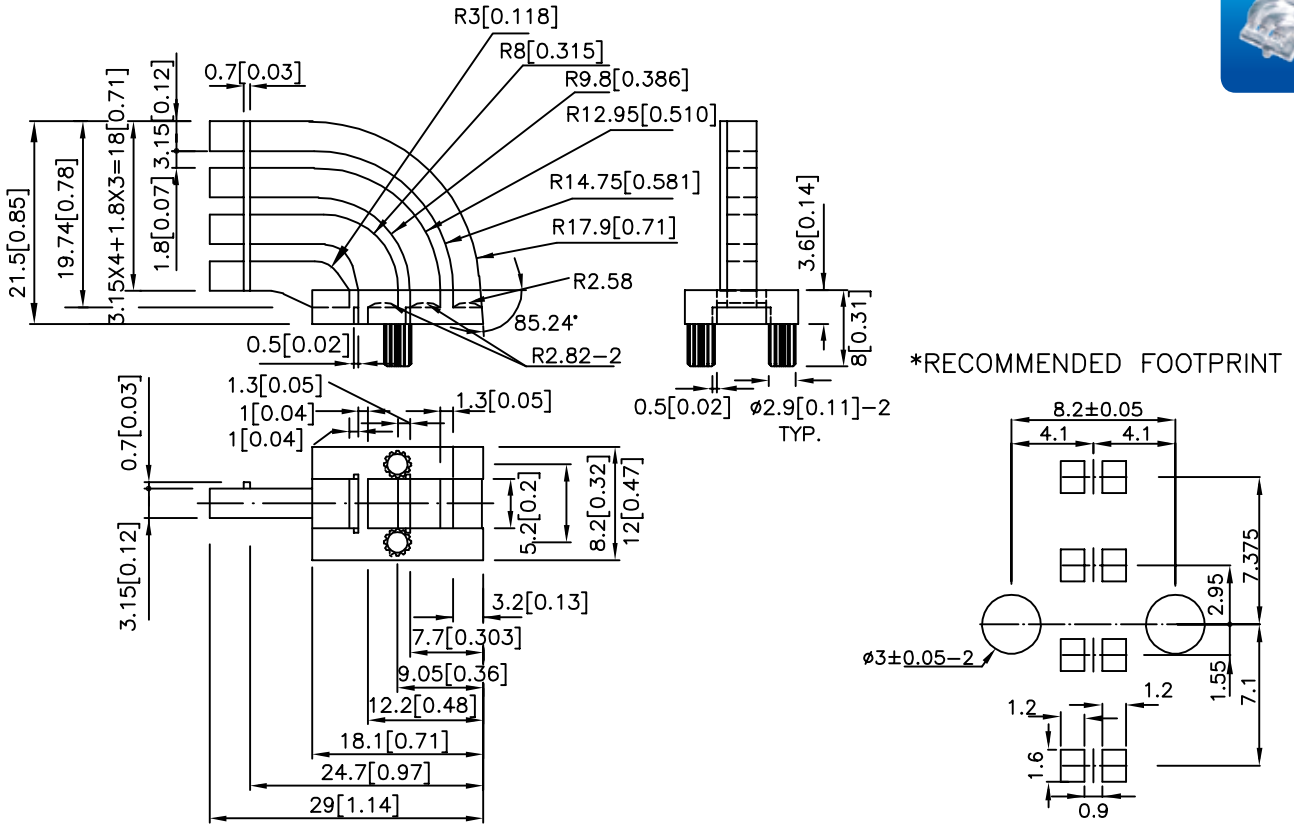
**Based LED lamps** 93

**Cluster** 94

KL-05



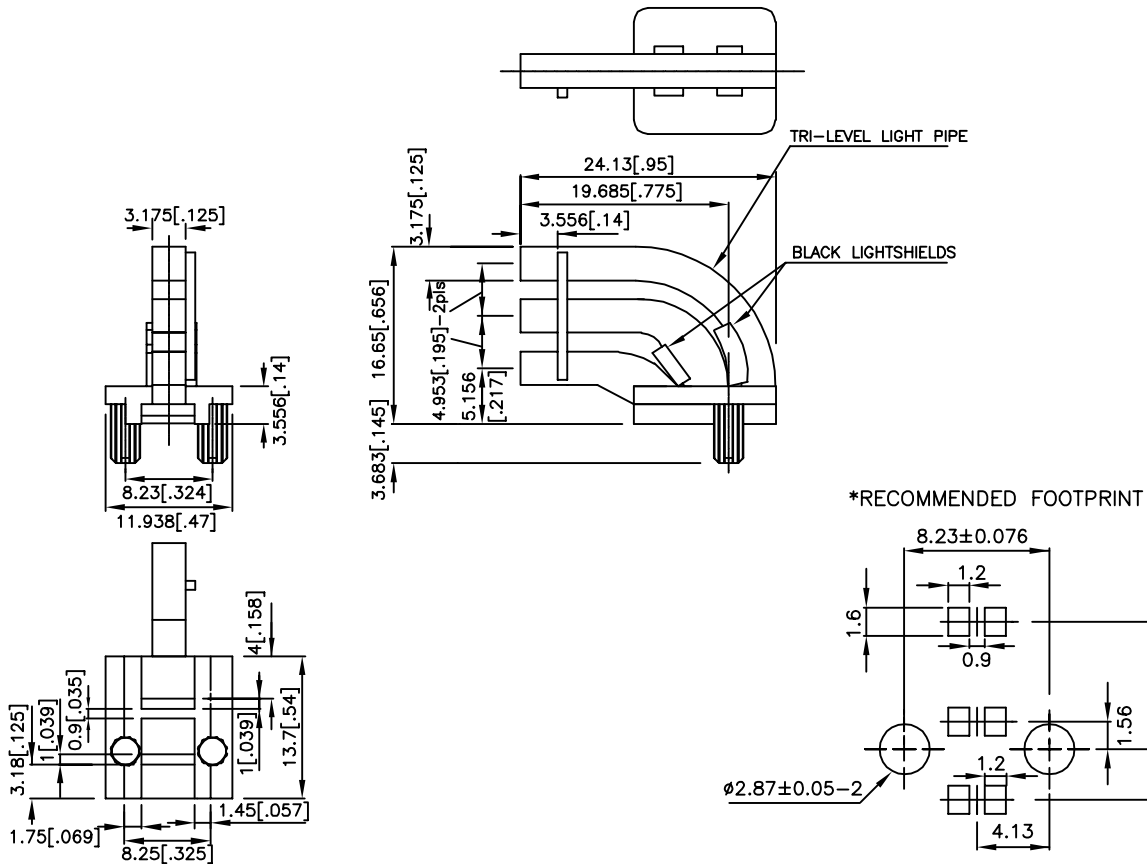
KL-05



KL-07LS




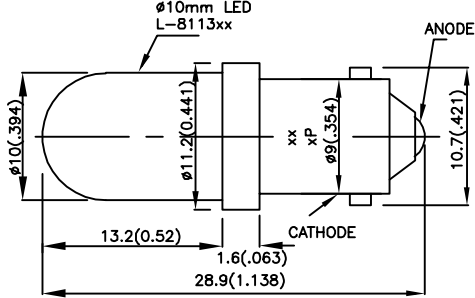
KL-07LS




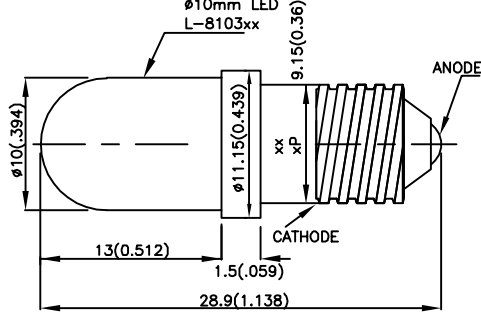
NOTES:

1. All dimensions are in millimeters(inches).
2. Tolerance is ±0.25mm(0.01") unless otherwise noted.

BAYONET BASE

PART NUMBER	MATERIAL	$\lambda_D$ (nm)	LENS TYPE	Iv (mcd)		VIEWING ANGLE	DIMENSION
				*V=12V MIN.	V=6V **V=28V TYP.		
BLB101SURC-E-6V-P	AlGaInP	630	water clear	1800	3300	20°	10mm Bayonet Base  
BLB101SURC-E-12V-P	AlGaInP	630	water clear	*1500	*2500	20°	
BLB101SURC-E-28V-P	AlGaInP	630	water clear	**1200	**2100	20°	
BLB101SYC-6V-P	AlGaInP	590	water clear	1500	2500	20°	
BLB101SYC-12V-P	AlGaInP	590	water clear	*900	*1800	20°	
BLB101SYC-28V-P	AlGaInP	590	water clear	**650	**1400	20°	
BLB101MGC-6V-P	AlGaInP	570	water clear	380	900	20°	
BLB101MGC-12V-P	AlGaInP	570	water clear	*280	*800	20°	
BLB101MGC-28V-P	AlGaInP	570	water clear	**180	**600	20°	

SCREW BASE

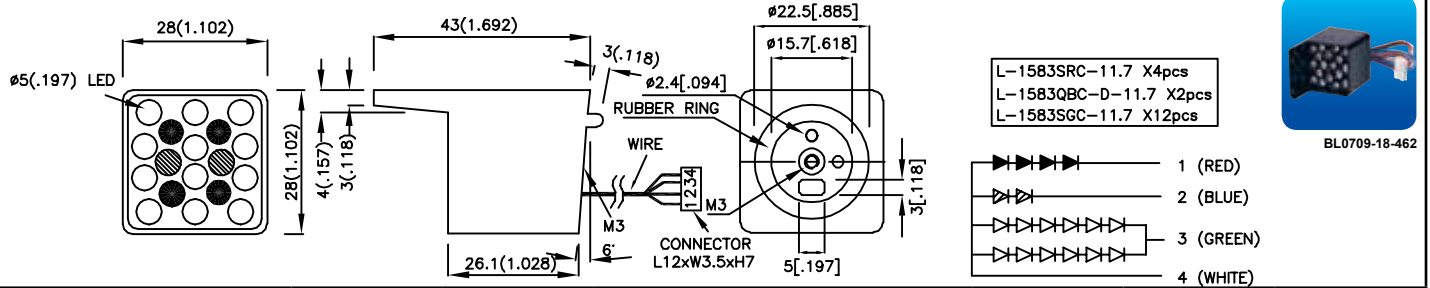
PART NUMBER	MATERIAL	$\lambda_D$ (nm)	LENS TYPE	Iv (mcd)		VIEWING ANGLE	DIMENSION
				*V=12V MIN.	V=6V **V=28V TYP.		
BLS101SURC-E-6V-P	AlGaInP	630	water clear	1800	3100	20°	10mm Screw Base  
BLS101SURC-E-12V-P	AlGaInP	630	water clear	*1200	*2500	20°	
BLS101SURC-E-28V-P	AlGaInP	630	water clear	**900	**2100	20°	
BLS101SYC-6V-P	AlGaInP	590	water clear	1500	2800	20°	
BLS101SYC-12V-P	AlGaInP	590	water clear	*1200	*2300	20°	
BLS101SYC-28V-P	AlGaInP	590	water clear	**650	**1800	20°	
BLS101MGC-6V-P	AlGaInP	570	water clear	480	1100	20°	
BLS101MGC-12V-P	AlGaInP	570	water clear	*380	*1000	20°	
BLS101MGC-28V-P	AlGaInP	570	water clear	**280	**800	20°	

NOTES:

1. All dimensions are in millimeters(inches).
2. Tolerance is  $\pm 0.25\text{mm}(0.01")$  unless otherwise noted.

## 28mmX28mm

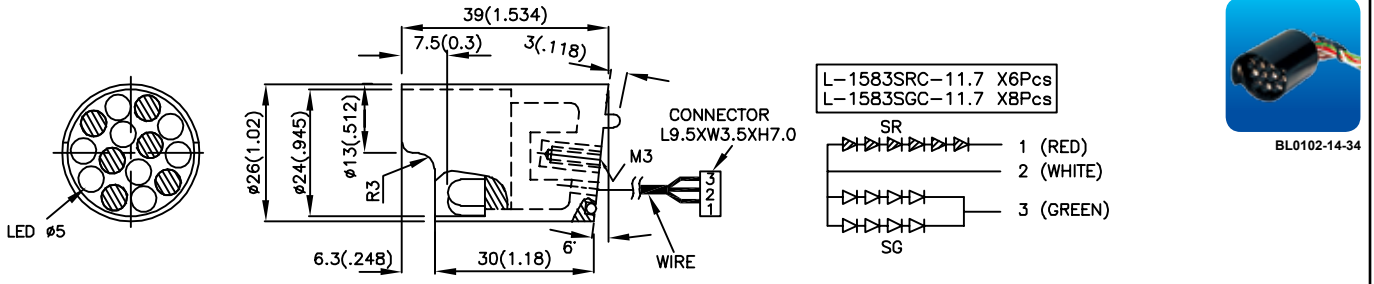
PART NUMBER	MATERIAL	λD (nm)	LENS TYPE	Iv (mcd)		VIEWING ANGLE	IF(mA)
				MIN.	TYP.		
BL0709-18-462	GaAlAs	640	water clear	900	1800	40°	20
	InGaN	470	water clear	280	650	40°	20
	GaP	568	water clear	650	1200	40°	40



BL0709-18-462

## 26mm

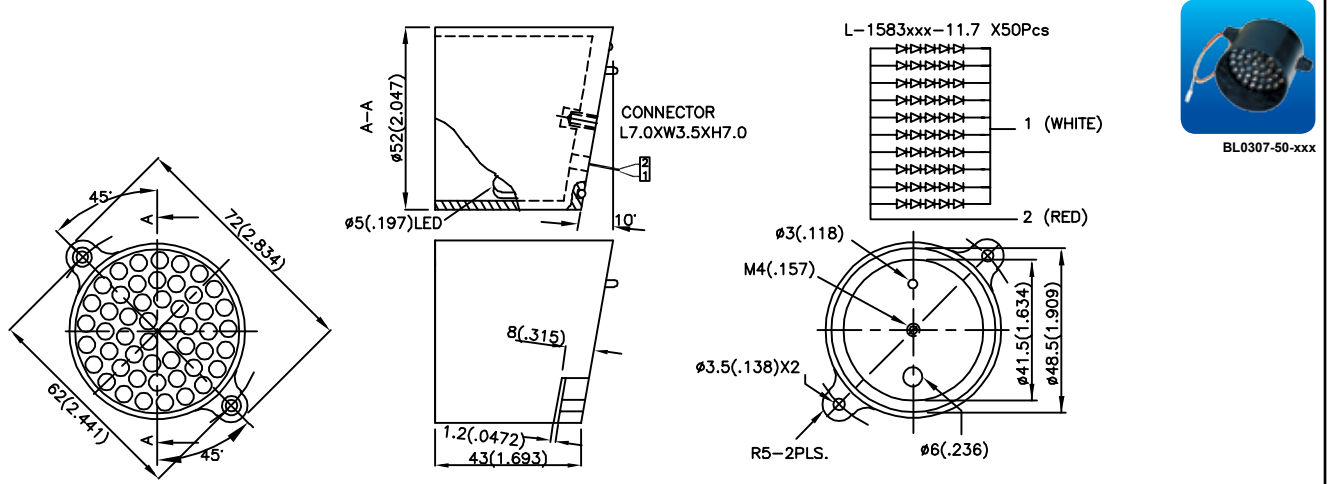
PART NUMBER	MATERIAL	λD (nm)	LENS TYPE	Iv (mcd)		VIEWING ANGLE	IF(mA)
				MIN.	TYP.		
BL0102-14-34	GaAlAs	640	water clear	1500	2800	40°	20
	GaP	568	water clear	650	1600	40°	40



BL0102-14-34

## 52mm

PART NUMBER	MATERIAL	λD (nm)	LENS TYPE	Iv (mcd)		VIEWING ANGLE	IF(mA)
				MIN.	TYP.		
BL0307-50-360	AlGaInP	570	water clear	7500	12000	40°	200
BL0307-50-374	AlGaInP	590	water clear	7500	15000	40°	200
BL0307-50-433	AlGaInP	630	water clear	8000	16000	40°	200



BL0307-50-xxx

NOTES:  
 1. All dimensions are in millimeters(inches).  
 2. Tolerance is ±0.25mm(0.01") unless otherwise noted.