



**PRIMOFIT<sup>®</sup>**  
Compression  
Fittings System

**DRAWLOCK<sup>®</sup>**  
System & Non-System  
Products

For Natural &  
LP Gas Installations

Versatile Pipe  
Fittings  
Systems

**+GF+**

## Pipe Specifications

Code Letter	Pipe Specification
a	BS 1387 - Steel Pipe
b	DIN 2440/2441/2442/2448 - steel pipe
c	GBE/PL2 - Yellow PE gas pipe (metric)
d	DIN 8074 PN10 - Black PE pipe (metric)
e	BS 6572 - Blue PE water pipe (metric)
o	British Gas Imperial SDR11 - Yellow PE gas pipe (imperial)

- Identify the code letter for your particular pipe specification
- Use this to identify relevant fittings in the catalogue.
- If your pipe specification code letter does not correspond to the fitting you require, please ask for details

## Key

*	British Gas Anti-Shear assembly - conforms to GBE/PL3
**	Sleeved Nut to accept GRP Riser Sleeve
—	Not in range
+	May be subject to extended lead times and minimum order quantities
Stl	Steel
PE	Polyethylene

- All unit weights quoted are approximate and in grammes
- Fittings for use with PE are supplied complete with insert stiffeners
- Standard Conditions of Sale apply to all transactions,.

**The technical data given in this publication is for general purposes only. They imply no warranty of whatever kind. Please consult our General Conditions of Supply.**

# Operating Temperatures & Pressures

## PRIMOFIT

Seal	Medium	Steel Pipe		PE Pipe	
		Max. Temp.	Max Working Pressure**	Max Temp	Max Pressure @ 20°C†
Nitrile	Gas***	70°C	10 bar	40°C	5 bar
Firejoint††	Gas	70°C	75mbar		

For all mediums minimum operating temperature is -20°C

\*\* Minimum operating pressure for steel pipe -0.8bar

\*\*\* Below ground applications only

**If your application is outside of these operating temperatures and pressures please contact supplier**

† Maximum operating pressure is dependent upon PE pipe specification and standard

†† **Must be used for internal gas service risers and laterals**

## DRAWLOCK

Medium	PE Pipe	
	Max. Temp.	Max Pressure @ 20°C
Gas	40°C	7 bar†
Water	40°C	7 bar†

† Maximum operating pressure is dependent upon PE pipe specification and standard

## Swivel Joints

Medium	Steel / Cast Iron Main	
	Max. Temp.	Max Pressure @ 20°C
Gas	40°C	2 bar*

\* As per British Gas codes of practice

## PRIMOFIT Joints

Temperature and pressure ratings for end load joints are as above.

## Angular Deflection - PRIMOFIT Joint

The PRIMOFIT joint will cope with ground subsidence and misalignment of connecting pipes up to 6° inclusive

**Important - PRIMOFIT FIREJOINT must be used for internal gas service risers and laterals**

# Contents

Pipe Specification & Key	2
Operating Temperatures & Pressures	3
<b>The PRIMOFIT<sup>®</sup> Compression Fitting System</b>	
Couplings	5-6
Male Adaptors	7
Female Adaptors	8
Tees	9
Threaded Outlet Tees	10
Elbows	11
Caps	12
Under Pressure Swivel Top Tees	13
Two Piece Under Pressure Swivel Top Tees	14
PRIMOFIT FIREJOINT Couplings	15
PRIMOFIT FIREJOINT Tees	15
PRIMOFIT FIREJOINT Elbows	16
PRIMOFIT FIREJOINT Spares Pack	17-18
Insert Stiffeners	19
Anti-shear Sleeves	19
GRP Riser Sleeves	20
PVC Preformed Bends	20
<b>The DRAWLOCK<sup>®</sup> System &amp; Non System Products</b>	
The DRAWLOCK System	21
Applications	22
Meter Box Adaptors	23-25
Service Insertion Adaptors	26-27
Steel to PE Transition Fitting	27
DRAWLOCK Tooling	28-30
Non-System Products	31

# Couplings



Type	Size	Nitrile Seals		Pipe Specs
		Cat No		
		Black	Galv	
Stl x Stl	1/2" x 1/2"	775 101 051	775 102 051	ab
	3/4" x 3/4"	775 101 052	775 102 052	ab
	1" x 1"	775 101 053	775 102 053	ab
	1 1/4" x 1 1/4"	775 101 054	775 102 054	ab
	1 1/2" x 1 1/2"	775 101 055	775 102 055	ab
	2" x 2"	775 101 056	775 102 056	ab
	2 1/2" x 2 1/2"	-	775 102 057	ab
	3" x 3"	-	775 102 058	ab
	3/4" x 3/4"	-	775 102 061	ab
	3" x 1/2"	-	775 102 062	ab
	1" x 3/4"	-	775 102 063	ab
	1 3/4" x 1"	-	775 102 066	ab
	1 1/2" x 1 1/4"	-	775 102 070	ab
	2" x 1 1/2"	-	775 102 075	ab
	Stl x PE	1/2" x 20mm	-	775 102 501
3/4" x 25mm		-	775 102 502	abde
1" x 32mm		-	775 102 503	abde
1 1/4" x 40mm		-	775 102 504	abde
1 1/2" x 50mm		-	775 102 505	abde
2" x 63mm		775 101 506	775 102 506	abcde
1/2" x 25mm		-	775 102 526	abde
1 1/2" x 40mm		-	775 102 520	abde
1 1/2" x 63mm		775101 540	-	abcde
Stl x PE*	3/4" x 25mm	-	775 101 152	abc
	1" x 32mm	-	775 101 153	abc
	3/4" x 20mm	-	775 101 161	abc

# Couplings



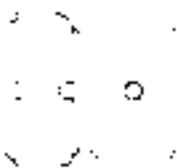
Type	Size	Nitrile Seals		Pipe Specs	
		Cat No			
		Black	Galv		
Stl x PE*	1" x 20mm	775 101 162	-	abc	
	1" x 25mm	775 101 163	-	abc	
	1 1/4" x 32mm	775 101 166	-	abc	
PE x PE	20 x 20mm	775 101 201	775 102 201	cde	
	25 x 25mm	775 101 202	775 102 202	cde	
	32 x 32mm	775 101 203	775 102 203	cde	
	40 x 40mm	-	775 102 204	de	
	50 x 50mm	775 101 205	775 102 205	de	
	63 x 63mm	775 101 206	775 102 206	cde	
	25 x 20mm	775 101 211	775 102 211	cde	
	32 x 20mm	-	775 102 212	cde	
	32 x 25mm	-	775 102 213	cde	
	63 x 50mm	-	775 102 541		
	PE x PE	1/2" x 20mm	775 101 961	-	cdeo
	(Imp)	3/4" x 25mm	775 101 962	-	cdeo
		1 x 32mm	775 101 963	-	cdeo
2 x 63mm		775 101 966	-	cdeo	
1 x 25mm		775 101 950	-	cdeo	
1 1/4" x 32mm		775 101 976	-	cdeo	
1 1/2" x 63mm		775 101 991	-	cdeo	

# Male Adaptors



Type	Size	Nitrile Seals		Pipe Specs
		Cat No		
		Black	Galv	
BSP x Stl	1/2" x 1/2"	775 201 051	775 202 051	ab
	3/4" x 3/4"	775 201 052	775 202 052	ab
	1" x 1"	775 201 053	775 202 053	ab
	1 1/4" x 1 1/4"	775 201 054	775 202 054	ab
	1 1/2" x 1 1/2"	775 201 055	775 202 055	ab
	2" x 2"	775 201 056	775 202 056	ab
	2 1/2" x 2 1/2"	775 201 057	775 202 057	ab
	3" x 3"	775 201 058	775 202 058	ab
BSP x PE	1/2" x 20mm	-	775 202 201	cde
	3/4" x 25mm	-	775 202 202	cde
	1" x 32mm	-	775 202 203	cde
	1 1/4" x 40mm	-	775 202 204	de
	1 1/2" x 50mm	-	775 202 205	de
	2" x 63mm	775 201 206	775 202 206	cde
BSP x PE*	1/2" x 20mm	775 201 101	-	cd
	3/4" x 25mm	775 201 102	-	cd
	1 x 32mm	775 201 103	-	cd
BSP x PE**	1/2" x 20mm	-	775 222 101	cde
	3/4" x 25mm	-	775 222 102	cde
	3/4" x 25mm with C Clip & Boss 1/8" BSP	-	775 232 202	cde
	1" x 32mm with C Clip & Boss 1/8" BSP		775 232 203	cde
	3/4" x 25mm with C Clip & Boss 1/8" BSP	-	775 232 202	cde
	3/4" x 20mm with C Clip	-	775 232 211	cde

## Female Adaptors



Type	Size	Nitrile Seals		Pipe
		Cat No		
		Black	Galv	
<b>BSP x Stl</b>	1/2" x 1/2"	-	775 212 051	ab
	3/4" x 3/4"	-	775 212 052	ab
	1" x 1"	-	775 212 053	ab
	1 1/4" x 1 1/4"	-	775 212 054	ab
	1 1/2" x 1 1/2"	-	775 212 055	ab
	2" x 2"	-	775 212 056	ab
	2 1/2" x 2 1/2"	-	775 212 057	ab
	3" x 3"	-	775 212 058	ab
	1" x 1 1/4"	-	-	ab
<b>BSP x PE</b>	1/2" x 20mm	-	775 212 201	cde
	3/4" x 25mm	-	775 212 202	cde
	1" x 32mm	-	775 212 203	cde
	1 1/4" x 40mm	-	775 212 204	de
	1 1/2" x 50mm	-	775 212 205	de
	2" x 63mm	775 211 206	775 212 206	cde
<b>BSP x PE*</b>	1/2" x 20mm	775 211 101	-	cd
	3/4" x 25mm	775 211 102	-	cd
	1" x 32mm	775 211 103	-	cd
	3/4" x 20mm	775 211 211	-	cd
	1" x 25mm	775 211 213	-	cd
<b>BSP x PE**</b>	3/4" x 20mm	-	775 322 111	cd
	3/4" x 25mm	-	775 322 102	cd
	1" x 32mm	-	775 322 103	cd



# Tees



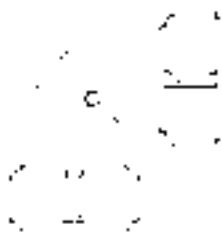
Type	Size	Nitrile Seals		Pipe Specs
		Cat No		
		Black	Galv	
Stl x Stl	1/2"	-	775 302 051	ab
x Stl	3/4"	-	775 302 052	ab
	1"	-	775 302 053	ab
	1 1/4"	-	775 302 054	ab
	1 1/2"	-	775 302 055	ab
	2"	-	775 302 056	ab
	3/4" x 1/2"	-	775 302 061	ab
	1" x 1/2"	-	775 302 062	ab
	1" x 3/4"	-	775 302 063	ab
	1 1/4" x 1/2"	-	775 302 064	ab
	1 1/2" x 1/2"	-	775 302 067	ab
	2" x 3/4"	-	775 302 072	ab
PE x PE	20mm	775 301 201	775 302 201	cde
x PE	25mm	775 301 202	775 302 202	cde
	32mm	775 301 203	775 302 203	cde
	63mm	775 301 206	775 302 206	cde
	25 x 20mm	-	775 302 211	cde
	32 x 20mm	-	775 302 212	cde
	32 x 25mm	-	775 302 213	cde
	63 x 25mm	-	775 302 222	cde

# Threaded Outlet Tees



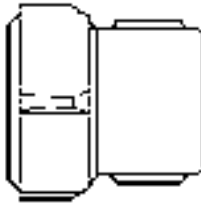
Type	Size	Nitrile Seals		Pipe Specs
		Cat No		
		Black	Galv	
Stl x Stl	1/2"	-	775 312 051	ab
x BSP	3/4"	-	775 312 052	ab
	1"	-	775 312 053	ab
	1 1/4"	-	775 312 054	ab
	1 1/2"	-	775 312 055	ab
	2"	-	775 312 056	ab

# Elbows



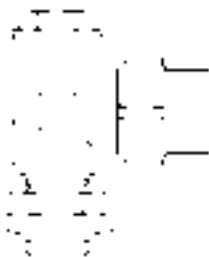
Type	Size	Nitrile Seals		Pipe Specs
		Cat No		
		Black	Galv	
Stl x Stl	1/2"	-	775 402 051	ab
	3/4"	-	775 402 052	ab
	1"	-	775 402 053	ab
	1 1/4"	-	775 402 054	ab
	1 1/2"	-	775 402 055	ab
	2"	-	775 402 056	ab
Stl x PE**	3/4" x 25mm	-	775 412 152	abcde
	1" x 32mm	-	775 412 153	abcde
PE x PE	20 x 20mm	775 401 201	-	cde
	25 x 25mm	775 401 202	775 402 202	cde
	32 x 32mm	775 401 203	-	cde
	40 x 40mm	-	-	de
	63 x 63mm	775 401 206	-	cde

# Caps



Type	Size	Nitrile Seals		Pipe Specs
		Cat No		
		Black	Galv	
Stl	1/2"	775 451 051	775 452 051	ab
	3/4"	775 451 052	775 452 052	ab
	1"	775 451 053	775 452 053	ab
	1 1/4"	775 451 054	775 452 054	ab
	1 1/2"	775 451 055	775 452 055	ab
	2"	775 451 056	775 452 056	ab
PE	20mm	775 451 201	775 452 201	cd
	25mm	775 451 202	775 452 202	cde
	32mm	775 451 203	775 452 203	cde
	40mm	-	775 452 204	de
	50mm	-	775 452 205	de
	63mm	775 451 206	775 452 206	cde

## Under Pressure Swivel Top Tees



\* Includes a screw down plug and BSP swivel mains connection

Type	Size	Nitrile Seals		Pipe Specs
		Black	Galv	
BSP x PE*	3/4" x 25mm	775 801 102	-	cd
	1" x 32mm	775 801 103	-	cd
	3/4" x 20mm	775 801 111	-	cd
	1" x 20mm	775 801 112	-	cd
	1" x 25mm	775 801 113	-	cd
	3/4" x 32mm	775 801 131	-	cd

## AST Under Pressure Swivel Service Tee

- \* Plastic service tee approved to GBE/F2
- \* Assembled and distributed under agreement with Uponor
- \* Supplied complete with electrofusion coupling

Type	Size	Nitrile Seals		Pipe Specs
		Black	Galv	
BSP x PE	1" x 20mm	775 801 242	-	c
	1" x 25mm	775 801 243	-	c
	1" x 32mm	775 801 244	-	c

# Two Piece under Pressure Swivel Top Tees



- \* Includes drop down under pressure plug and BSP swivel mains connection
- \* Catalogue number 775 851 206 is supplied without under pressure plug and BSP swivel mains connection (ie. Top Body only)

Type	Size	Nitrile Seals		Pipe Specs
		Black	Galv	
BSP x PE	1 1/2" x 63mm	775 801 240	-	cd
	2" x 63mm	775 801 206	-	cd
	2" x 63mm (top body)	775 851 206	-	cd

# PRIMOFIT FIREJOINT

## Couplings



Type	Size	Nitrile Seals		Pipe Specs
		Black	Galv	
Stl x Stl	1/2" x 1/2"	-	775 104 051	ab
	3/4" x 3/4"	-	775 104 052	ab
	1" x 1"	-	775 104 053	ab
	1 1/4" x 1 1/4"	-	775 104 054	ab
	1 1/2" x 1 1/2"	-	775 104 055	ab
	2" x 2"	-	775 104 056	ab

## Tees



Type	Size	Nitrile Seals		Pipe Specs
		Black	Galv	
Stl x Stl	3/4"	-	775 304 052	ab
x Stl	1"	-	775 304 053	ab
	2"	-	775 304 056	ab
	1 x 3/4"	-	775 304 063	ab
	2 x 3/4"	-	775 304 072	ab

Primofit Firejoint is British Gas approved for use on above ground internal and external steel gas pipes.

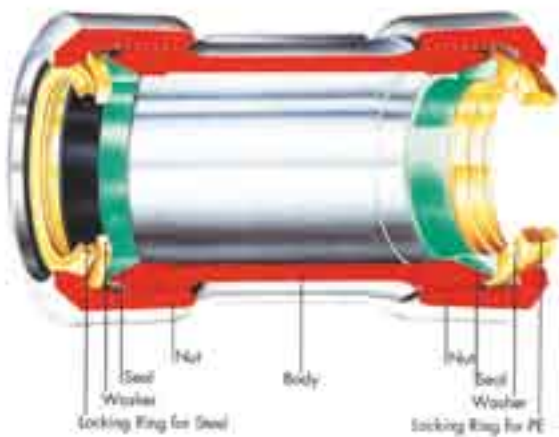
# Elbows



Type	Size	Nitrile Seals		Pipe Specs
		Cat No		
		Black	Galv	
Stl x Stl	3/4"	-	775 404 052	ab
	1"	-	775 404 053	ab
	2"	-	775 404 056	ab

Primofit Firejoint is British Gas approved for use on above ground internal and external steel gas pipes.

Spare seal kits are available to fit full range of Primofit fittings.





# Spare Packs

Steel Joint

PE Joint



- \* Each pack contains; seal, washer and locking ring.
- \* Order insert stiffeners separately

Type	Size	Cat No
		Nitrile Seals
Steel Joint	1/2"	775 958 951
	3/4"	775 958 952
	1"	775 958 953
	1 1/4"	775 958 954
	1 1/2"	775 958 955
	2"	775 958 956
	2 1/2"	775 958 917
	3"	775 958 918
	PE Joint	20mm
25mm		775 958 962
32mm		775 958 963
40mm		775 958 964
50mm		775 958 965
63mm		775 958 966
PE Joint	1/2"	775 963 961
	3/4"	775 963 962
	1"	775 963 963
	1 1/4"	775 963 964
	1 1/2"	775 963 965
	2"	775 963 966

\* For pipe specifications please refer to the relevant fitting pipe specification

# FIREJOINT Spare Packs\*

Steel Joint

---

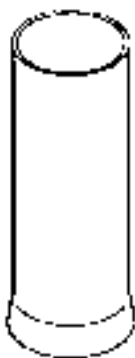


\* Each pack contains; rubber and graphite seal, washer, locking ring and nut

Type	Size	Cat No	Pipe Specs
		Nitrile Seals	
Steel Joint	1/2"	775 958 971	ab
	3/4"	775 958 972	ab
	1"	775 958 973	ab
	1 1/4"	775 958 974	ab
	1 1/2"	775 958 975	ab
	2"	775 958 976	ab

\* For use on above ground, external and internal gas service risers and laterals

## Insert Stiffeners

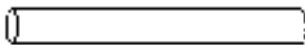


\* The same insert stiffener is suitable for fittings with either nitrile or EPDM seals.

Type	Size	Cat. No.	Pipe Specs
PN10	20mm	775 950 201	cde
	25mm	775 950 202	cde
	32mm	775 950 203	cde
	40mm	775 950 204	cde
	50mm	775 950 205	cde
	63mm	775 950 206	cde

\* Fittings for PE pipe are supplied with insert stiffeners

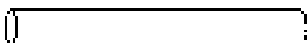
## Anti-Shear Sleeves



\* For Anti-Shear Assembly to conform with BGE/PL3

Type	Size	Cat No	To Suit PE Service	Pipe Specs
PE*	32 x 250mm	775 950 353	20mm	c
	50 x 250mm	775 090 363	25/32mm	c

## GRP Riser Sleeves



\* Protective sleeve for gas PE risers

Type	Size o.d. x length	Cat No £ per metre	To Suit PE Service	Pipe Specs
	38mm x 2m	775 091 404	25mm	-
	44mm x 2m	775 091 414	32mm	-

## PVC Preformed Bends



\* Sleeve for gas services

Type	Size	Cat No	To Suit PE Service	Pipe Specs
	38-900-R450	775 095 307	20/25mm	-
	44-900R450	775 095 317	32mm	-

# The DRAW-LOCK System

## Joining Principle (Section through Meter Box Adaptor)



GF specialises in gas service fittings 'from main to meter' for both steel and PE pipes for natural gas and LPG. The sizes range from 20mm to 63mm PE and 1/2" to 2" steel.

It is generally preferred that gas fittings used in above ground applications are tamperproof in order to discourage interference from authorised personnel.

DRAW-LOCK is the natural choice, since the joint can only be made once and is permanent. The joint is made inside the pipe and is therefore protected from external damage and corrosive influences. Special tools are necessary which are pocket sized and reusable.

A cross-section of a DRAW-LOCK joint is shown above.

### GBE/PL3 Specification

PE Service Pipe	PE Sleeve Pipe
16mm	32mm SDR 17
20mm	32mm SDR 17
25mm	50mm SDR 17
32mm	50mm SDR 17

### Technical Data

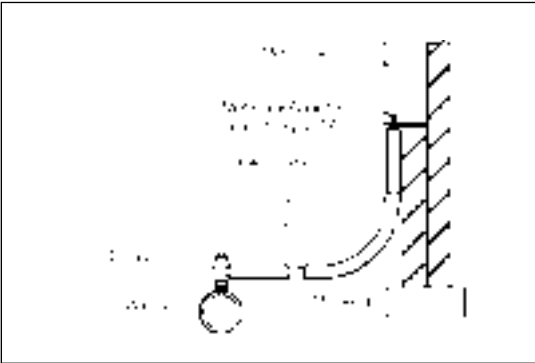
Joint approved to:	GBE/PL3
P.E. Pipe Standard:	GBE/PL2 (Other standards upon request)
Working Pressure:	Up to 7 bar*
Working Temperature:	-20°C to 40°C
Galvanised Fittings:	Hot dip galvanised to BS 729, DIN 2950
Zinc Plating	BS 1706 Zn3, DIN 50961

\*Dependent on pipe and temperature

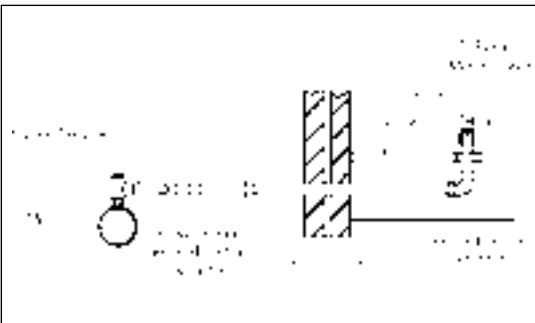
Component	Material	Material Standards
Body	Malleable Cast Iron	BS 6681, DIN 1692
Liners	Copper	BS 2871, C106, DIN 17671

# Application of Service Fittings

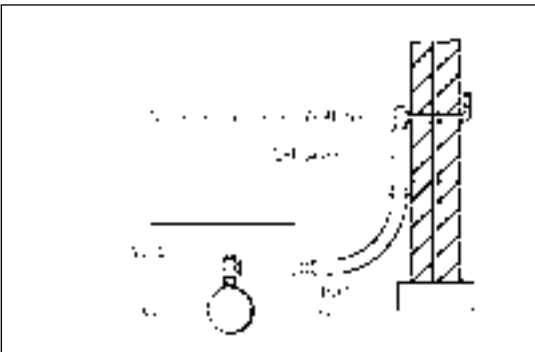
## Meter Box Adaptors



## Service Insertion Adaptors



## Above Ground Through Wall Fittings



## The DRAW-LOCK System - GBE/PL3 Approved

### Meter Box Adaptor (2385)



- Light, compact design
- Hot dip galvanised

PE Service	BSP Male	Cat No.
16mm	3/4"	775 063 531
20mm	3/4"	775 063 532
25mm	3/4"	775 063 533
32mm	1"	775 063 544

### Top Entry Meter Box Adaptor (2835S)



- Light, compact design
- Hot dip galvanised

PE Service	BSP Male	Cat No.
20mm	3/4"	775 063 592
25mm	3/4"	775 063 593

- For use where GRP sleeving, PVC bend and ducting have to be installed prior to service being laid

## Semi-Concealed Meter Box Adaptor (2835P)



- Light, compact design
- Hot dip galvanised
- Shrink wrapped for corrosion protection

PE Service	BSP Male	Cat No.
20mm	3/4"	775 063 582
25mm	3/4"	775 063 583

- For semi-concealed meter installations

## Push-Fit Meter Box Adaptor GBE/PL3 Approved (2816)



- Light, compact design
- Hot dip galvanised

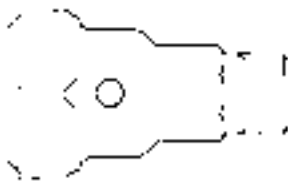
PE Service	BSP Male	Cat No.
25mm	3/4"	775 063 633

- C/W BSP Tapping



## The DRAW-LOCK System - GBE/PL3 Approved

### Service Insertion Adaptors - Compression - 2 port



- With 2 off 1/4" BSP vent for foam filling
- Supplied with 1/4" BSP nipple and plug

PE Service	Compression	BSP Male	Cat No.
16mm	3/4"	3/4"	775 053 451
16mm	1"	3/4"	775 053 452
20mm	1"	3/4"	775 053 462
25mm	1 1/4"	3/4"	775 053 472
25mm	1 1/2"	3/4"	775 053 473
32mm	1 1/2"	1"	775 053 482
32mm	1 1/2"	3/4"	775 053 483
32mm	2"	3/4"	775 053 484
32mm	2"	1"	775 053 485

## Service Insertion Adaptors - Screwed - 2 port



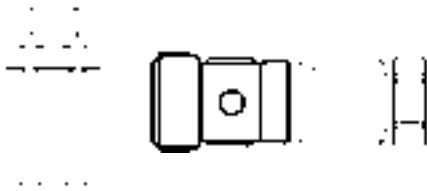
- With 2 off  $\frac{1}{4}$ " BSP vent for foam filling
- Supplied with  $\frac{1}{4}$ " BSP nipple and plug
- Black finish

PE Service	Compression	BSP Male	Cat No.
16mm	$\frac{3}{4}$ "	$\frac{3}{4}$ "	775 059 551
16mm	1"	$\frac{3}{4}$ "	775 059 552
20mm	1"	$\frac{3}{4}$ "	775 059 562
20mm	$1\frac{1}{4}$ "	$\frac{3}{4}$ "	775 059 564
25mm	$1\frac{1}{4}$ "	$\frac{3}{4}$ "	775 059 572
25mm	$1\frac{1}{2}$ "	$\frac{3}{4}$ "	775 059 573
25mm	2"	$\frac{3}{4}$ "	775 059 575
32mm	2"	$\frac{3}{4}$ "	775 059 584
32mm	$1\frac{1}{2}$ "	1"	775 059 585
32mm	2"	1"	775 059 586

# The DRAW-LOCK System

## - GBE/PL3 Approved

### Fittings for Serviflex pipe



- Supplied with plugs and nipple for annular fill/venting process

Description	Size	Cat. No.
Service Insertion Adaptor	20 Serviflex 1" FBSP x 3/4" MBSP	775 083 022
Service Insertion Adaptor	20 Serviflex 1"	775 030 112 Stl x 20 PE*

### Steel to PE Transition Fittings - Above Ground (2856S)

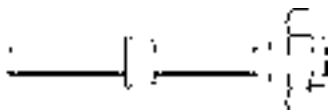


- For GRP sleeving
- Zinc plated
- Female BSP

Description	BSP Female	Description	Cat. No.
63mm	2"	Bracket, 1m Wavin, GRP	775 065 637

## DRAW-LOCK Tooling

### Draw-Tool with Expander (3000)



17mm A/F

- 25mm Draw-Tool supplied with 25mm expander. By changing the expander 20mm and 32mm joints can be made.

Size	Cat. No.	Size	Cat. No.
16mm	775 093 001	40mm	775 093 005
20mm	775 093 002	50mm	775 093 006
25mm	775 093 003	63mm	775 093 007
32mm	775 093 004		

### Expander (spare) (3001)



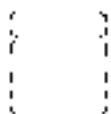
Size	Cat. No.	Size	Cat. No.
16mm	775 093 011	40mm	775 093 015
20mm	775 093 012	50mm	775 093 016
25mm	775 093 013	63mm	775 093 017
32mm	775 093 014		

## Draw-Tool Stems (3002)



Size	Cat. No.	Size	Cat. No.
16mm	775 925 705	-	
20, 25 32mm	775 093 022	-	775 093 025

## Adaptor Bush (3006)



- For joint making with service insertion adaptors

Size	Cat. No.	Size	Cat. No.
16mm	775 093 061	25mm	775 093 063
20mm	775 093 062	32mm	775 093 064

## Combination Tool with Cap (3100)



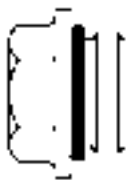
Size	Cat. No.	Size	Cat. No.
3/4"	775 093 103	1"	775 093 104

## Combination Tool Stem (3100)



Size	Cat. No.
3/4" / 1"	775 093 133

## Cap (spare) (3101)



Size	Cat. No.	Size	Cat. No.
3/4"	775 093 113	2"	775 093 117
1"	775 093 114		

## Carrier for plastic tees

Size	Cat. No.	Size	Cat. No.
1"	775 093 120		

## Tool Kits

13 piece

10 piece

Size	Cat. No.	Size	Cat. No.
16 - 32mm	775 093 050	20 - 32mm	775 093 048

## Tool Kits Contents

**775 093 050**

Size	Cat. No.	Description
16mm*	775 093 001	Draw Tool with expander
20mm	775 093 012	Draw Tool expander
25mm	775 093 013	Draw Tool expander
32mm	775 093 014	Draw Tool expander
20-25-32mm	775 093 022	Draw Tool Stem
16mm*	775 093 061	Live Insertion Adaptor Bush
20mm	775 093 062	Live Insertion Adaptor Bush
25mm	775 093 063	Live Insertion Adaptor Bush
32mm	775 093 064	Live Insertion Adaptor Bush
3/4"	775 093 113	Cap
1"	775 093 114	Cap
2"*	775 093 117	Cap
3/4" - 1" & 2"	775 093 133	Combination Tool

10 piece Tool Kit Set available 775 093 048

Please Note - 10 piece kit available without \* parts

## Non-System Products

### Swivel Nipple (2826)



- Black finish

---

Size	Cat. No.
1" x 2"	775 082 614
1½" x 2"	775 082 616
2" x 2"	775 082 617

### Emid Completion Plug (2827)



- Black finish

---

Size	Cat. No.
¾"	775 082 713
1"	775 082 714
1¼"	775 082 715
1½"	775 082 716
2"	775 082 717

Stockist

--



**George Fischer Sales Limited**  
**Paradise Way, Coventry CV2 2ST**  
**Tel. 024 7653 5535, Fax. 024 7653 0450**  
**email** [uk.ps@georgfischer.com](mailto:uk.ps@georgfischer.com)  
**website** [www.georgefischer.co.uk](http://www.georgefischer.co.uk)