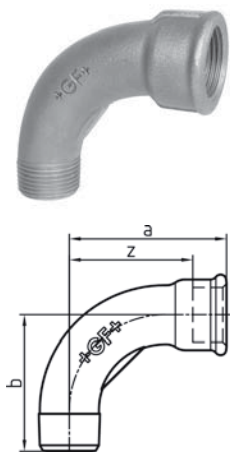


Malleable cast iron fittings

1

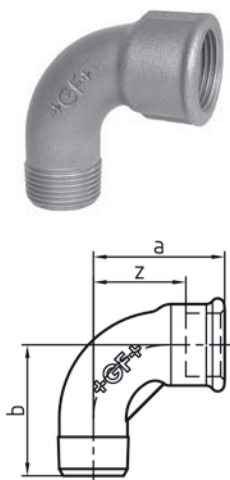
Long sweep bend 90°, ISO/EN G4



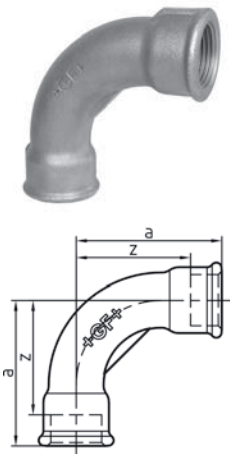
EN		Dim. [inch]	Code	a [mm]	b [mm]	z [mm]	
•	B	1/8	770 001 101	35	32	28	
•	G	1/8	770 001 201	35	32	28	
•	B	1/4	770 001 102	40	36	30	
•	G	1/4	770 001 202	40	36	30	
•	B	3/8	770 001 103	48	42	38	
•	G	3/8	770 001 203	48	42	38	
•	B	1/2	770 001 104	55	48	42	
•	G	1/2	770 001 204	55	48	42	
•	B	3/4	770 001 105	69	60	54	
•	G	3/4	770 001 205	69	60	54	
•	B	1	770 001 106	85	75	68	
•	G	1	770 001 206	85	75	68	
•	B	1 1/4	770 001 107	105	95	86	
•	G	1 1/4	770 001 207	105	95	86	
•	B	1 1/2	770 001 108	116	105	97	
•	G	1 1/2	770 001 208	116	105	97	
•	B	2	770 001 109	140	130	116	
•	G	2	770 001 209	140	130	116	
•	B	2 1/2	770 001 110	176	165	149	
•	G	2 1/2	770 001 210	176	165	149	
•	B	3	770 001 111	205	190	175	
•	G	3	770 001 211	205	190	175	
•	B	4	770 001 112	260	245	224	
•	G	4	770 001 212	260	245	224	

1a

Short bend 90°, ISO/EN D4

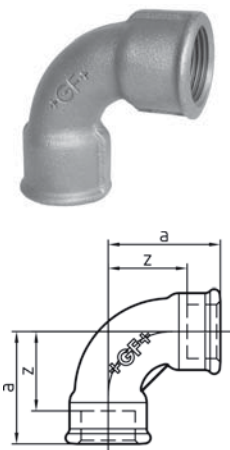


EN	BS		Dim. [inch]	Code	a [mm]	b [mm]	z [mm]	
•	-	B	1/4	770 011 102	30	30	20	
•	-	G	1/4	770 011 202	30	30	20	
•	-	B	3/8	770 011 103	36	36	26	
•	-	G	3/8	770 011 203	36	36	26	
•	-	B	1/2	770 011 104	45	45	32	
•	-	G	1/2	770 011 204	45	45	32	
•	-	B	3/4	770 011 105	50	50	35	
•	-	G	3/4	770 011 205	50	50	35	
•	-	B	1	770 011 106	63	63	46	
•	-	G	1	770 011 206	63	63	46	
•	-	B	1 1/4	770 011 107	76	76	57	
•	-	G	1 1/4	770 011 207	76	76	57	
•	-	B	1 1/2	770 011 108	85	85	66	
•	-	G	1 1/2	770 011 208	85	85	66	
•	-	B	2	770 011 109	102	102	78	
•	-	G	2	770 011 209	102	102	78	
-	•	B	2 1/2	770 011 110	115	115	88	
-	•	G	2 1/2	770 011 210	115	115	88	
-	•	B	3	770 011 111	127	127	97	
-	•	G	3	770 011 211	127	127	97	
-	•	B	4	770 011 112	165	165	129	
-	•	G	4	770 011 212	165	165	129	



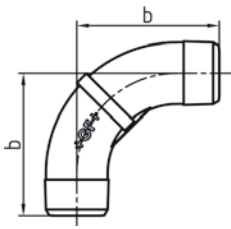
2 Long sweep bend 90°, ISO/EN G1

EN		Dim. [inch]	Code	a [mm]	z [mm]
•	B	¼	770 002 102	40	30
•	G	¼	770 002 202	40	30
•	B	⅜	770 002 103	48	38
•	G	⅜	770 002 203	48	38
•	B	½	770 002 104	55	42
•	G	½	770 002 204	55	42
•	B	¾	770 002 105	69	54
•	G	¾	770 002 205	69	54
•	B	1	770 002 106	85	68
•	G	1	770 002 206	85	68
•	B	1 ¼	770 002 107	105	86
•	G	1 ¼	770 002 207	105	86
•	B	1 ½	770 002 108	116	97
•	G	1 ½	770 002 208	116	97
•	B	2	770 002 109	140	116
•	G	2	770 002 209	140	116
•	B	2 ½	770 002 110	176	149
•	G	2 ½	770 002 210	176	149
•	B	3	770 002 111	205	175
•	G	3	770 002 211	205	175
•	B	4	770 002 112	260	224
•	G	4	770 002 212	260	224



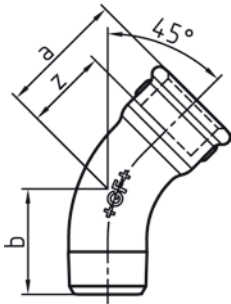
2a Short bend 90°, ISO/EN D1

EN	BS		Dim. [inch]	Code	a [mm]	z [mm]
•	-	B	¼	770 012 102	30	20
•	-	G	¼	770 012 202	30	20
•	-	B	⅜	770 012 103	36	26
•	-	G	⅜	770 012 203	36	26
•	-	B	½	770 012 104	45	32
•	-	G	½	770 012 204	45	32
•	-	B	¾	770 012 105	50	35
•	-	G	¾	770 012 205	50	35
•	-	B	1	770 012 106	63	46
•	-	G	1	770 012 206	63	46
•	-	B	1 ¼	770 012 107	76	57
•	-	G	1 ¼	770 012 207	76	57
•	-	B	1 ½	770 012 108	85	66
•	-	G	1 ½	770 012 208	85	66
•	-	B	2	770 012 109	102	78
•	-	G	2	770 012 209	102	78
-	•	B	2 ½	770 012 110	115	88
-	•	G	2 ½	770 012 210	115	88
-	•	B	3	770 012 111	127	97
-	•	G	3	770 012 211	127	97
-	•	B	4	770 012 112	165	129
-	•	G	4	770 012 212	165	129



3 Long sweep bend 90°, ISO/EN G8

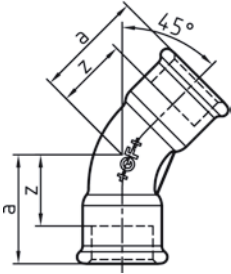
EN		Dim. [inch]	Code	b [mm]	
-	B	¼	770 003 102	33	
-	G	¼	770 003 202	33	
•	B	⅜	770 003 103	42	
•	G	⅜	770 003 203	42	
•	B	½	770 003 104	48	
•	G	½	770 003 204	48	
•	B	¾	770 003 105	60	
•	G	¾	770 003 205	60	
•	B	1	770 003 106	75	
•	G	1	770 003 206	75	
•	B	1 ¼	770 003 107	95	
•	G	1 ¼	770 003 207	95	
•	B	1 ½	770 003 108	105	
•	G	1 ½	770 003 208	105	
•	B	2	770 003 109	130	
•	G	2	770 003 209	130	
-	G	2 ½	770 003 210	165	



40 Long sweep bend 45°, ISO/EN G4/45°

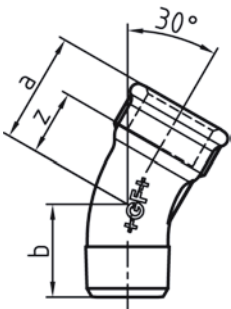
EN		Dim. [inch]	Code	a [mm]	b [mm]	z [mm]	
•	B	¼	770 040 102	26	21	16	
•	G	¼	770 040 202	26	21	16	
•	B	⅜	770 040 103	30	24	20	
•	G	⅜	770 040 203	30	24	20	
•	B	½	770 040 104	36	30	23	
•	G	½	770 040 204	36	30	23	
•	B	¾	770 040 105	43	36	28	
•	G	¾	770 040 205	43	36	28	
•	B	1	770 040 106	51	42	34	
•	G	1	770 040 206	51	42	34	
•	B	1 ¼	770 040 107	64	54	45	
•	G	1 ¼	770 040 207	64	54	45	
•	B	1 ½	770 040 108	68	58	49	
•	G	1 ½	770 040 208	68	58	49	
•	B	2	770 040 109	81	70	57	
•	G	2	770 040 209	81	70	57	
•	B	2 ½	770 040 110	99	86	72	
•	G	2 ½	770 040 210	99	86	72	
•	B	3	770 040 111	113	100	83	
•	G	3	770 040 211	113	100	83	
-	B	4	770 040 112	141	130	105	
-	G	4	770 040 212	141	130	105	

41 Long sweep bend 45°, ISO/EN G1/45°



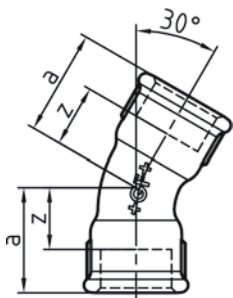
EN		Dim. [inch]	Code	a [mm]	z [mm]
•	B	3/8	770 041 103	30	20
•	G	3/8	770 041 203	30	20
•	B	1/2	770 041 104	36	23
•	G	1/2	770 041 204	36	23
•	B	3/4	770 041 105	43	28
•	G	3/4	770 041 205	43	28
•	B	1	770 041 106	51	34
•	G	1	770 041 206	51	34
•	B	1 1/4	770 041 107	64	45
•	G	1 1/4	770 041 207	64	45
•	B	1 1/2	770 041 108	68	49
•	G	1 1/2	770 041 208	68	49
•	B	2	770 041 109	81	57
•	G	2	770 041 209	81	57
•	B	2 1/2	770 041 110	99	72
•	G	2 1/2	770 041 210	99	72
•	B	3	770 041 111	113	83
•	G	3	770 041 211	113	83
-	G	4	770 041 212	141	105

50 Bend 30°



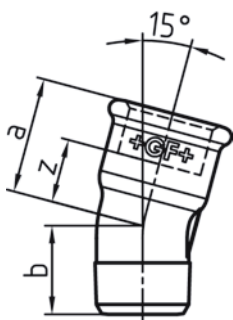
EN		Dim. [inch]	Code	a [mm]	b [mm]	z [mm]
-	G	1/2	770 050 204	30	24	17
-	G	3/4	770 050 205	36	30	21
-	G	1	770 050 206	44	36	27
-	G	1 1/4	770 050 207	52	44	33
-	G	1 1/2	770 050 208	56	46	37
-	G	2	770 050 209	66	54	42
-	G	2 1/2	770 050 210	80	66	53
-	G	3	770 050 211	92	77	62
-	G	4	770 050 212	114	100	78

51 Bend 30°



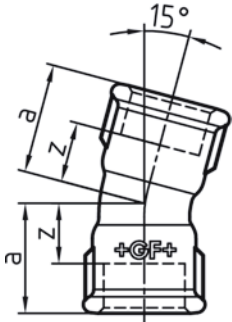
EN		Dim. [inch]	Code	a [mm]	z [mm]	
-	G	½	770 051 204	30	17	
-	G	¾	770 051 205	36	21	
-	G	1	770 051 206	44	27	
-	G	1 ¼	770 051 207	52	33	
-	G	1 ½	770 051 208	56	37	
-	G	2	770 051 209	66	42	

53 Bend 15°



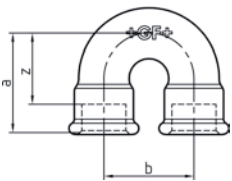
EN		Dim. [inch]	Code	a [mm]	b [mm]	z [mm]	
-	G	½	770 053 204	28	21	15	
-	G	¾	770 053 205	33	25	18	
-	G	1	770 053 206	37	29	20	
-	G	1 ¼	770 053 207	43	34	24	
-	G	1 ½	770 053 208	45	35	26	
-	G	2	770 053 209	51	41	27	
-	G	2 ½	770 053 210	62	52	35	

54 Bend 15°



EN		Dim. [inch]	Code	a [mm]	z [mm]
-	G	½	770 054 204	28	15
-	G	¾	770 054 205	33	18
-	G	1	770 054 206	37	20
-	G	1 ¼	770 054 207	45	26
-	G	1 ½	770 054 208	47	28
-	G	2	770 054 209	51	27

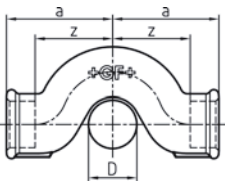
60 Return bend



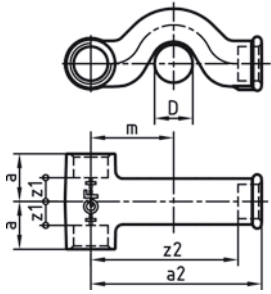
EN	BS		Dim. [inch]	Code	a [mm]	b [mm]	z [mm]
-	•	B	½	770 060 104	45	38	32
-	•	G	½	770 060 204	45	38	32
-	•	B	¾	770 060 105	52	50	37
-	•	G	¾	770 060 205	52	50	37
-	•	B	1	770 060 106	64	64	47
-	•	G	1	770 060 206	64	64	47
-	•	B	1 ¼	770 060 107	73	76	54
-	•	G	1 ¼	770 060 207	73	76	54
-	•	B	1 ½	770 060 108	80	89	61
-	•	G	1 ½	770 060 208	80	89	61
-	•	B	2	770 060 109	90	102	66
-	•	G	2	770 060 209	90	102	66

85 Crossover

* D=¾

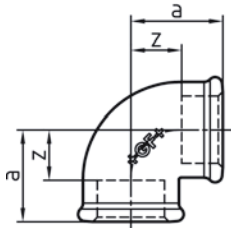


EN		Dim. [inch]	Code	a [mm]	D [inch]	z [mm]
-	B	⅜	770 085 103	38	⅜	28
-	G	⅜	770 085 203	38	⅜	28
-	B	½	770 085 104	47	½	34
-	G	½	770 085 204	47	½	34
*-	B	½	770 085 115	49	¾	36
*-	G	½	770 085 215	49	¾	36
-	B	¾	770 085 105	55	¾	40
-	G	¾	770 085 205	55	¾	40
-	B	1	770 085 106	70	1	53
-	G	1	770 085 206	70	1	53
-	B	1 ¼	770 085 107	85	1 ¼	66
-	G	1 ¼	770 085 207	85	1 ¼	66



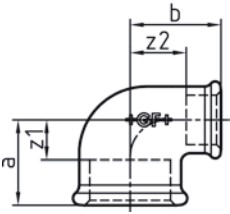
87 Tee with crossover branch

EN		Dim. [inch]	Code	a [mm]	a2 [mm]	z1 [mm]	z2 [mm]	D [inch]	m [mm]
-	G	1/2	770 087 204	26	93	13	80	1/2	45



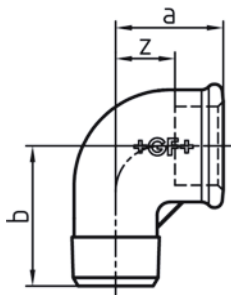
90 Elbow 90°, equal, ISO/EN A1

EN		Dim. [inch]	Code	a [mm]	z [mm]
•	B	1/8	770 090 101	19	12
•	G	1/8	770 090 201	19	12
•	B	1/4	770 090 102	21	11
•	G	1/4	770 090 202	21	11
•	B	3/8	770 090 103	25	15
•	G	3/8	770 090 203	25	15
•	B	1/2	770 090 104	28	15
•	G	1/2	770 090 204	28	15
•	B	3/4	770 090 105	33	18
•	G	3/4	770 090 205	33	18
•	B	1	770 090 106	38	21
•	G	1	770 090 206	38	21
•	B	1 1/4	770 090 107	45	26
•	G	1 1/4	770 090 207	45	26
•	B	1 1/2	770 090 108	50	31
•	G	1 1/2	770 090 208	50	31
•	B	2	770 090 109	58	34
•	G	2	770 090 209	58	34
•	B	2 1/2	770 090 110	69	42
•	G	2 1/2	770 090 210	69	42
•	B	3	770 090 111	78	48
•	G	3	770 090 211	78	48
•	B	4	770 090 112	96	60
•	G	4	770 090 212	96	60



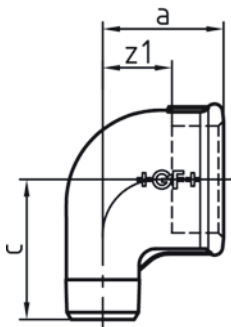
90 Elbow 90°, reducing, ISO/EN A1

EN	BS		Dim. (1-2) [inch]	Code	a [mm]	b [mm]	z1 [mm]	z2 [mm]	
-	-	B	¼ - ⅙	770 090 115	20	20	10	13	
-	-	G	¼ - ⅙	770 090 215	20	20	10	13	
•	-	B	⅜ - ¼	770 090 116	23	23	13	13	
•	-	G	⅜ - ¼	770 090 216	23	23	13	13	
-	•	B	½ - ¼	770 090 117	24	24	11	14	
-	•	G	½ - ¼	770 090 217	24	24	11	14	
•	-	B	½ - ⅜	770 090 118	26	26	13	16	
•	-	G	½ - ⅜	770 090 218	26	26	13	16	
•	-	B	¾ - ⅜	770 090 119	28	28	13	18	
•	-	G	¾ - ⅜	770 090 219	28	28	13	18	
•	-	B	¾ - ½	770 090 120	30	31	15	18	
•	-	G	¾ - ½	770 090 220	30	31	15	18	
-	-	B	1 - ⅜	770 090 145	32	34	15	24	
-	-	G	1 - ⅜	770 090 245	32	34	15	24	
•	-	B	1 - ½	770 090 121	32	34	15	21	
•	-	G	1 - ½	770 090 221	32	34	15	21	
•	-	B	1 - ¾	770 090 122	35	36	18	21	
•	-	G	1 - ¾	770 090 222	35	36	18	21	
-	•	B	1 ¼ - ½	770 090 132	35	38	16	25	
-	•	G	1 ¼ - ½	770 090 232	35	38	16	25	
•	-	B	1 ¼ - ¾	770 090 123	36	41	17	26	
•	-	G	1 ¼ - ¾	770 090 223	36	41	17	26	
•	-	B	1 ¼ - 1	770 090 124	40	42	21	25	
•	-	G	1 ¼ - 1	770 090 224	40	42	21	25	
-	•	B	1 ½ - ¾	770 090 125	38	44	19	29	
-	•	G	1 ½ - ¾	770 090 225	38	44	19	29	
•	-	B	1 ½ - 1	770 090 126	42	46	23	29	
•	-	G	1 ½ - 1	770 090 226	42	46	23	29	
•	-	B	1 ½ - 1 ¼	770 090 127	46	48	27	29	
•	-	G	1 ½ - 1 ¼	770 090 227	46	48	27	29	
-	•	B	2 - 1	770 090 128	44	52	20	35	
-	•	G	2 - 1	770 090 228	44	52	20	35	
-	•	B	2 - 1 ¼	770 090 129	48	54	24	35	
-	•	G	2 - 1 ¼	770 090 229	48	54	24	35	
•	-	B	2 - 1 ½	770 090 130	52	55	28	36	
•	-	G	2 - 1 ½	770 090 230	52	55	28	36	
•	-	G	2 ½ - 2	770 090 231	61	66	34	42	



92 Elbow 90°, equal, ISO/EN A4

EN		Dim. [inch]	Code	a [mm]	b [mm]	z [mm]
•	B	1/8	770 092 101	19	25	12
•	G	1/8	770 092 201	19	25	12
•	B	1/4	770 092 102	21	28	11
•	G	1/4	770 092 202	21	28	11
•	B	3/8	770 092 103	25	32	15
•	G	3/8	770 092 203	25	32	15
•	B	1/2	770 092 104	28	37	15
•	G	1/2	770 092 204	28	37	15
•	B	3/4	770 092 105	33	43	18
•	G	3/4	770 092 205	33	43	18
•	B	1	770 092 106	38	52	21
•	G	1	770 092 206	38	52	21
•	B	1 1/4	770 092 107	45	60	26
•	G	1 1/4	770 092 207	45	60	26
•	B	1 1/2	770 092 108	50	65	31
•	G	1 1/2	770 092 208	50	65	31
•	B	2	770 092 109	58	74	34
•	G	2	770 092 209	58	74	34
•	B	2 1/2	770 092 110	69	88	42
•	G	2 1/2	770 092 210	69	88	42
•	B	3	770 092 111	78	98	48
•	G	3	770 092 211	78	98	48
•	B	4	770 092 112	96	118	60
•	G	4	770 092 212	96	118	60

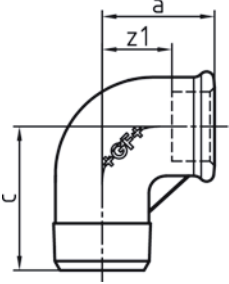


92 Elbow 90°, male thread reduced, ISO/EN A4

EN		Dim. (1-2) [inch]	Code	a [mm]	c [mm]	z1 [mm]
•	B	1/2 - 3/8	770 092 116	26	33	13
•	G	1/2 - 3/8	770 092 216	26	33	13
•	B	3/4 - 1/2	770 092 117	30	40	15
•	G	3/4 - 1/2	770 092 217	30	40	15
•	B	1 - 1/2	770 092 130	32	46	15
•	G	1 - 1/2	770 092 230	32	46	15
•	B	1 - 3/4	770 092 118	35	46	18
•	G	1 - 3/4	770 092 218	35	46	18
-	G	1 1/4 - 3/4	770 092 219	44	51	17
•	B	1 1/4 - 1	770 092 120	40	56	21
•	G	1 1/4 - 1	770 092 220	40	56	21
-	B	1 1/2 - 1	770 092 121	47	62	28
-	G	1 1/2 - 1	770 092 221	47	62	28
-	B	1 1/2 - 1 1/4	770 092 122	52	64	33
-	G	1 1/2 - 1 1/4	770 092 222	52	64	33

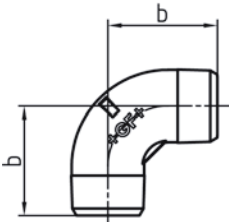


92 Elbow 90°, female thread reduced, ISO/EN A4



EN		Dim. (1-2) [inch]	Code	a [mm]	c [mm]	z1 [mm]
-	B	3/8 - 1/2	770 092 124	28	37	18
-	G	3/8 - 1/2	770 092 224	28	37	18
-	B	1/2 - 3/4	770 092 125	34	42	21
-	G	1/2 - 3/4	770 092 225	34	42	21
-	B	3/4 - 1	770 092 126	39	50	24
-	G	3/4 - 1	770 092 226	39	50	24
-	B	1 - 1 1/4	770 092 127	44	59	27
-	G	1 - 1 1/4	770 092 227	44	59	27

94 Elbow 90°



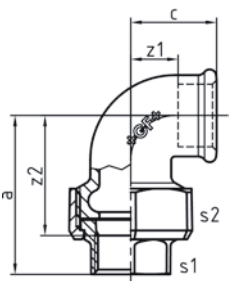
EN		Dim. [inch]	Code	b [mm]
-	B	3/8	770 094 103	29
-	G	3/8	770 094 203	29
-	B	1/2	770 094 104	37
-	G	1/2	770 094 204	37
-	B	3/4	770 094 105	40
-	G	3/4	770 094 205	40
-	B	1	770 094 106	47
-	G	1	770 094 206	47
-	B	1 1/4	770 094 107	56
-	G	1 1/4	770 094 207	56
-	B	1 1/2	770 094 108	59
-	G	1 1/2	770 094 208	59
-	B	2	770 094 109	68
-	G	2	770 094 209	68

95 Union elbow, flat seat, ISO/EN UA1

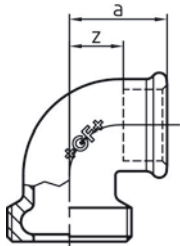
Supplied without sealing gaskets; a and z2 include the seal thickness as per table "Sealing Gasket Dimension".

374 G ... refers to the thread size G according to ISO 228 of the union nut 374.

* Inside hexagon



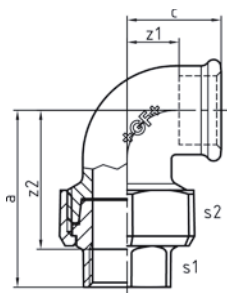
EN		Dim. [inch]	374 G [inch]	Code	a [mm]	c [mm]	z1 [mm]	z2 [mm]	s1 [mm]	s2 [mm]
•	B	3/8	3/4	770 095 103	52	25	15	42	*12	32
•	G	3/8	3/4	770 095 203	52	25	15	42	*12	32
•	B	1/2	1	770 095 104	58	28	15	45	26	41
•	G	1/2	1	770 095 204	58	28	15	45	26	41
•	B	3/4	1 1/4	770 095 105	62	33	18	47	31	48
•	G	3/4	1 1/4	770 095 205	62	33	18	47	31	48
•	B	1	1 1/2	770 095 106	72	38	21	55	38	55
•	G	1	1 1/2	770 095 206	72	38	21	55	38	55
•	B	1 1/4	2	770 095 107	82	45	26	63	48	67
•	G	1 1/4	2	770 095 207	82	45	26	63	48	67
•	B	1 1/2	2 1/4	770 095 108	90	50	31	71	54	74
•	G	1 1/2	2 1/4	770 095 208	90	50	31	71	54	74
•	B	2	2 3/4	770 095 109	100	58	34	76	67	90
•	G	2	2 3/4	770 095 209	100	58	34	76	67	90



95 ET Union bush to fig. 95

* Is usually not supplied as a separate piece.

EN		Dim. Rp [inch]	G...B [inch]	Code	a [mm]	z [mm]
* -	B	3/8	3/4	-	25	15
* -	G	3/8	3/4	-	25	15
-	B	1/2	1	770 695 104	28	15
-	G	1/2	1	770 695 204	28	15
-	B	3/4	1 1/4	770 695 105	33	18
-	G	3/4	1 1/4	770 695 205	33	18
-	B	1	1 1/2	770 695 106	38	21
-	G	1	1 1/2	770 695 206	38	21
-	B	1 1/4	2	770 695 107	45	26
-	G	1 1/4	2	770 695 207	45	26
-	B	1 1/2	2 1/4	770 695 108	50	31
-	G	1 1/2	2 1/4	770 695 208	50	31
-	B	2	2 3/4	770 695 109	58	34
-	G	2	2 3/4	770 695 209	58	34



96 Union elbow, taper seat, ISO/EN UA11

Torque and notes for installation please find in "Technical Product Notes".

374 G ... refers to the thread size G according to ISO 228 of the union nut 374.

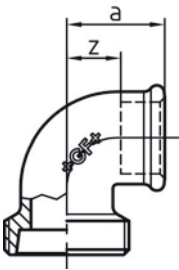
* Inside hexagon

EN		Dim. [inch]	374 G [inch]	Code	a [mm]	c [mm]	z1 [mm]	z2 [mm]	s1 [mm]	s2 [mm]
•	B	1/4	5/8	770 096 102	48	21	11	38	*10	28
•	G	1/4	5/8	770 096 202	48	21	11	38	*10	28
•	B	3/8	3/4	770 096 103	52	25	15	42	*12	32
•	G	3/8	3/4	770 096 203	52	25	15	42	*12	32
•	B	1/2	1	770 096 104	58	28	15	45	25	41
•	G	1/2	1	770 096 204	58	28	15	45	25	41
•	B	3/4	1 1/4	770 096 105	62	33	18	47	32	48
•	G	3/4	1 1/4	770 096 205	62	33	18	47	32	48
•	B	1	1 1/2	770 096 106	72	38	21	55	38	55
•	G	1	1 1/2	770 096 206	72	38	21	55	38	55
•	B	1 1/4	2	770 096 107	82	45	26	63	48	67
•	G	1 1/4	2	770 096 207	82	45	26	63	48	67
•	B	1 1/2	2 1/4	770 096 108	90	50	31	71	54	74
•	G	1 1/2	2 1/4	770 096 208	90	50	31	71	54	74
•	B	2	2 3/4	770 096 109	100	58	34	76	66	90
•	G	2	2 3/4	770 096 209	100	58	34	76	66	90
-	B	2 1/2	3 1/2	770 096 110	130	72	45	103	85	111
-	G	2 1/2	3 1/2	770 096 210	130	72	45	103	85	111
-	B	3	4	770 096 111	134	79	49	104	96	131
-	G	3	4	770 096 211	134	79	49	104	96	131



96 ET Union bush to fig. 96

Is usually not supplied as a separate piece.



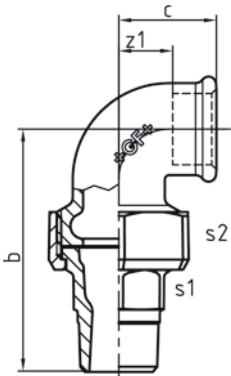
EN		Dim. Rp [inch]	G...B [inch]	Code	a [mm]	z [mm]
-	B	1/4	5/8	-	21	11
-	G	1/4	5/8	-	21	11
-	B	1/4	3/4	-	25	15
-	G	1/4	3/4	-	25	15
-	B	1/4	1/2	-	28	15
-	G	1/4	1/2	-	28	15
-	B	3/4	1 1/4	-	33	18
-	G	3/4	1 1/4	-	33	18
-	B	1	1 1/2	-	38	21
-	G	1	1 1/2	-	38	21
-	B	1 1/4	2	-	45	26
-	G	1 1/4	2	-	45	26
-	B	1 1/2	2 1/4	-	50	31
-	G	1 1/2	2 1/4	-	50	31
-	B	2	2 3/4	-	58	34
-	G	2	2 3/4	-	58	34
-	B	2 1/2	3 1/2	-	72	45
-	G	2 1/2	3 1/2	-	72	45
-	B	3	4	-	79	49
-	G	3	4	-	79	49



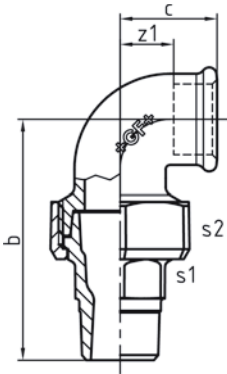
97 Union elbow, flat seat, ISO/EN UA2

Supplied without sealing gaskets; b includes the seal thickness as per table "Sealing Gasket Dimension".

374 G ... refers to the thread size G according to ISO 228 of the union nut 374.



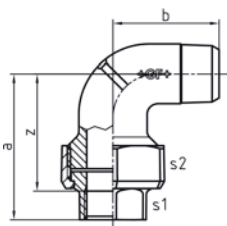
EN		Dim. [inch]	374 G [inch]	Code	b [mm]	c [mm]	z1 [mm]	s1 [mm]	s2 [mm]
•	B	3/8	3/4	770 097 103	65	25	15	19	32
•	G	3/8	3/4	770 097 203	65	25	15	19	32
•	B	1/2	1	770 097 104	76	28	15	25	41
•	G	1/2	1	770 097 204	76	28	15	25	41
•	B	3/4	1 1/4	770 097 105	82	33	18	32	48
•	G	3/4	1 1/4	770 097 205	82	33	18	32	48
•	B	1	1 1/2	770 097 106	93	38	21	39	55
•	G	1	1 1/2	770 097 206	93	38	21	39	55
•	B	1 1/4	2	770 097 107	107	45	26	48	67
•	G	1 1/4	2	770 097 207	107	45	26	48	67
•	B	1 1/2	2 1/4	770 097 108	115	50	31	54	74
•	G	1 1/2	2 1/4	770 097 208	115	50	31	54	74
•	B	2	2 3/4	770 097 109	128	58	34	66	90
•	G	2	2 3/4	770 097 209	128	58	34	66	90



98 Union elbow, taper seat, ISO/EN UA12

Torque and notes for installation please find in "Technical Product Notes".
374 G ... refers to the thread size G according to ISO 228 of the union nut 374.

EN		Dim. [inch]	374 G [inch]	Code	b [mm]	c [mm]	z1 [mm]	s1 [mm]	s2 [mm]
•	B	1/4	5/8	770 098 102	61	21	11	15	28
•	G	1/4	5/8	770 098 202	61	21	11	15	28
•	B	3/8	3/4	770 098 103	65	25	15	20	32
•	G	3/8	3/4	770 098 203	65	25	15	20	32
•	B	1/2	1	770 098 104	76	28	15	25	41
•	G	1/2	1	770 098 204	76	28	15	25	41
•	B	3/4	1 1/4	770 098 105	82	33	18	32	48
•	G	3/4	1 1/4	770 098 205	82	33	18	32	48
•	B	1	1 1/2	770 098 106	94	38	21	38	55
•	G	1	1 1/2	770 098 206	94	38	21	38	55
•	B	1 1/4	2	770 098 107	107	45	26	48	67
•	G	1 1/4	2	770 098 207	107	45	26	48	67
•	B	1 1/2	2 1/4	770 098 108	115	50	31	54	74
•	G	1 1/2	2 1/4	770 098 208	115	50	31	54	74
•	B	2	2 3/4	770 098 109	128	58	34	67	90
•	G	2	2 3/4	770 098 209	128	58	34	67	90
-	B	2 1/2	3 1/2	770 098 110	164	72	45	85	111
-	G	2 1/2	3 1/2	770 098 210	164	72	45	85	111
-	B	3	4	770 098 111	167	79	49	95	131
-	G	3	4	770 098 211	167	79	49	95	131

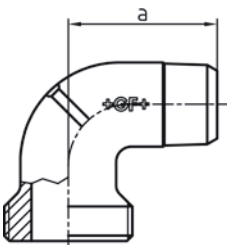


100 Union elbow, flat seat

Supplied without sealing gaskets; a and z include the seal thickness as per table "Sealing Gasket Dimension".

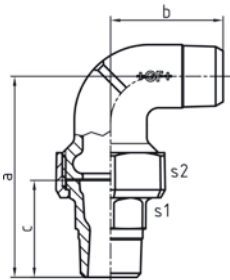
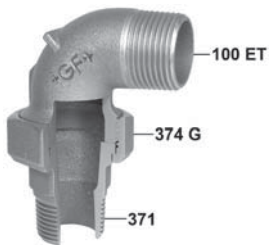
374 G ... refers to the thread size G according to ISO 228 of the union nut 374.

EN		Dim. [inch]	374 G [inch]	Code	a [mm]	b [mm]	z [mm]	s1 [mm]	s2 [mm]
-	B	1/2	1	770 100 104	58	39	45	26	41
-	G	1/2	1	770 100 204	58	39	45	26	41
-	B	3/4	1 1/4	770 100 105	61	43	46	31	48
-	G	3/4	1 1/4	770 100 205	61	43	46	31	48
-	B	1	1 1/2	770 100 106	71	52	55	38	55
-	G	1	1 1/2	770 100 206	71	52	55	38	55



100 ET Union bush to fig. 100

EN		Dim. R [inch]	G...B [inch]	Code	a [mm]
-	B	1/2	1	770 600 104	39
-	G	1/2	1	770 600 204	39
-	B	3/4	1 1/4	770 600 105	43
-	G	3/4	1 1/4	770 600 205	43
-	B	1	1 1/2	770 600 106	52
-	G	1	1 1/2	770 600 206	52

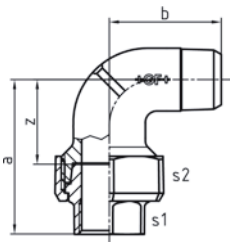
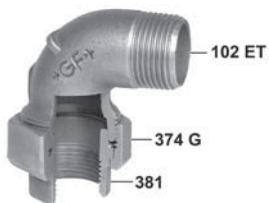


101 Union elbow, flat seat

Supplied without sealing gaskets; a includes the seal thickness as per table "Sealing Gasket Dimension".

374 G ... refers to the thread size G according to ISO 228 of the union nut 374.

EN		Dim. [inch]	374 G [inch]	Code	a [mm]	b [mm]	c [mm]	s1 [mm]	s2 [mm]
-	B	1/2	1	770 101 104	77	39	40	25	41
-	G	1/2	1	770 101 204	77	39	40	25	41
-	B	3/4	1 1/4	770 101 105	81	43	42	32	48
-	G	3/4	1 1/4	770 101 205	81	43	42	32	48
-	B	1	1 1/2	770 101 106	93	52	47	39	55
-	G	1	1 1/2	770 101 206	93	52	47	39	55

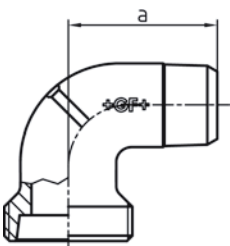


102 Union elbow, taper seat

Torque and notes for installation please find in "Technical Product Notes".

374 G ... refers to the thread size G according to ISO 228 of the union nut 374.

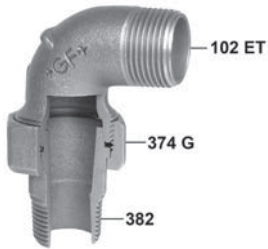
EN		Dim. [inch]	374 G [inch]	Code	a [mm]	b [mm]	z [mm]	s1 [mm]	s2 [mm]
-	B	1/2	1	770 102 104	59	39	46	25	41
-	G	1/2	1	770 102 204	59	39	46	25	41
-	B	3/4	1 1/4	770 102 105	61	43	46	32	48
-	G	3/4	1 1/4	770 102 205	61	43	46	32	48
-	B	1	1 1/2	770 102 106	71	52	54	38	55
-	G	1	1 1/2	770 102 206	71	52	54	38	55



102 ET Union bush to Fig. 102

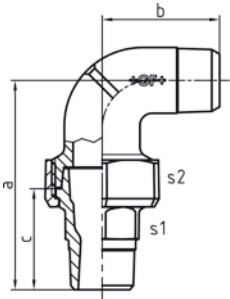
Is usually not supplied as a separate piece.

EN		Dim. R [inch]	G...B [inch]	Code	a [mm]
-	B	1/2	1	-	39
-	G	1/2	1	-	39
-	B	3/4	1 1/4	-	43
-	G	3/4	1 1/4	-	43
-	B	1	1 1/2	-	52
-	G	1	1 1/2	-	52



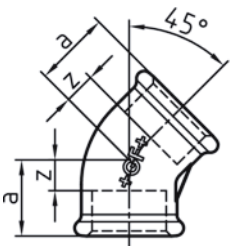
103 Union elbow, taper seat

Torque and notes for installation please find in "Technical Product Notes".
374 G ... refers to the thread size G according to ISO 228 of the union nut 374.



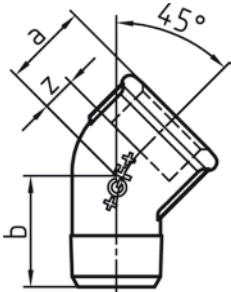
EN		Dim. [inch]	374 G [inch]	Code	a [mm]	b [mm]	c [mm]	s1 [mm]	s2 [mm]
-	B	1/2	1	770 103 104	76	39	40.5	25	39
-	G	1/2	1	770 103 204	76	39	40.5	25	39
-	B	3/4	1 1/4	770 103 105	81	43	42.5	32	48
-	G	3/4	1 1/4	770 103 205	81	43	42.5	32	48
-	B	1	1 1/2	770 103 106	93	52	47.5	38	55
-	G	1	1 1/2	770 103 206	93	52	47.5	38	55

120 Elbow 45°, ISO/EN A1/45°



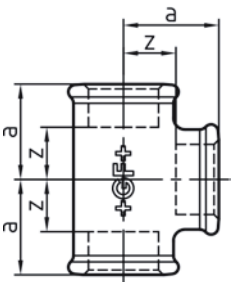
EN	BS		Dim. [inch]	Code	a [mm]	z [mm]
•	-	B	3/8	770 120 103	20	10
•	-	G	3/8	770 120 203	20	10
•	-	B	1/2	770 120 104	22	9
•	-	G	1/2	770 120 204	22	9
•	-	B	3/4	770 120 105	25	10
•	-	G	3/4	770 120 205	25	10
•	-	B	1	770 120 106	28	11
•	-	G	1	770 120 206	28	11
•	-	B	1 1/4	770 120 107	33	14
•	-	G	1 1/4	770 120 207	33	14
•	-	B	1 1/2	770 120 108	36	17
•	-	G	1 1/2	770 120 208	36	17
•	-	B	2	770 120 109	43	19
•	-	G	2	770 120 209	43	19
-	•	B	2 1/2	770 120 110	48	21
-	•	G	2 1/2	770 120 210	48	21
-	•	B	3	770 120 111	54	24
-	•	G	3	770 120 211	54	24

121 Elbow 45°, ISO/EN A4/45°



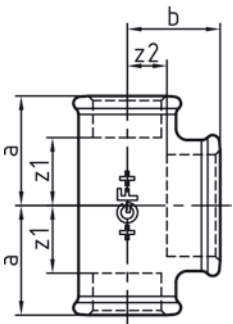
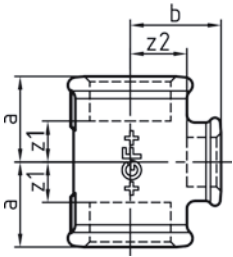
EN	BS		Dim. [inch]	Code	a [mm]	b [mm]	z [mm]
•	-	B	3/8	770 121 103	20	25	10
•	-	G	3/8	770 121 203	20	25	10
•	-	B	1/2	770 121 104	22	28	9
•	-	G	1/2	770 121 204	22	28	9
•	-	B	3/4	770 121 105	25	32	10
•	-	G	3/4	770 121 205	25	32	10
•	-	B	1	770 121 106	28	37	11
•	-	G	1	770 121 206	28	37	11
•	-	B	1 1/4	770 121 107	33	43	14
•	-	G	1 1/4	770 121 207	33	43	14
•	-	B	1 1/2	770 121 108	36	46	17
•	-	G	1 1/2	770 121 208	36	46	17
•	-	B	2	770 121 109	43	55	19
•	-	G	2	770 121 209	43	55	19
-	•	B	2 1/2	770 121 110	46	54	19
-	•	G	2 1/2	770 121 210	46	54	19
-	•	B	3	770 121 111	52	61	22
-	•	G	3	770 121 211	52	61	22

130 Tee, equal, ISO/EN B1

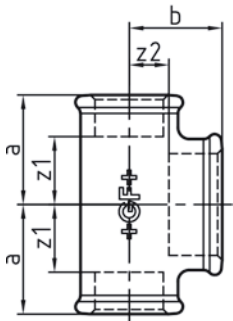
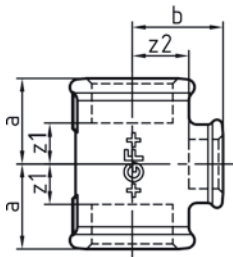


EN		Dim. [inch]	Code	a [mm]	z [mm]
•	B	1/8	770 130 101	19	12
•	G	1/8	770 130 201	19	12
•	B	1/4	770 130 102	21	11
•	G	1/4	770 130 202	21	11
•	B	3/8	770 130 103	25	15
•	G	3/8	770 130 203	25	15
•	B	1/2	770 130 104	28	15
•	G	1/2	770 130 204	28	15
•	B	3/4	770 130 105	33	18
•	G	3/4	770 130 205	33	18
•	B	1	770 130 106	38	21
•	G	1	770 130 206	38	21
•	B	1 1/4	770 130 107	45	26
•	G	1 1/4	770 130 207	45	26
•	B	1 1/2	770 130 108	50	31
•	G	1 1/2	770 130 208	50	31
•	B	2	770 130 109	58	34
•	G	2	770 130 209	58	34
•	B	2 1/2	770 130 110	69	42
•	G	2 1/2	770 130 210	69	42
•	B	3	770 130 111	78	48
•	G	3	770 130 211	78	48
•	B	4	770 130 112	96	60
•	G	4	770 130 212	96	60

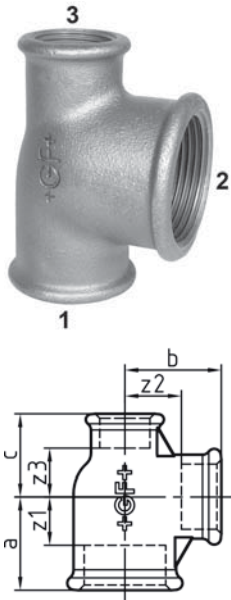
130 Tee, reducing or increasing on the branch, ISO/EN B1



EN	BS		Dim. (1-2) [inch]	Code	a [mm]	b [mm]	z1 [mm]	z2 [mm]
•	-	B	3/8 - 1/4	770 130 115	23	23	13	13
•	-	G	3/8 - 1/4	770 130 215	23	23	13	13
•	-	B	3/8 - 1/2	770 130 116	26	26	16	13
•	-	G	3/8 - 1/2	770 130 216	26	26	16	13
•	-	B	1/2 - 1/4	770 130 117	24	24	11	14
•	-	G	1/2 - 1/4	770 130 217	24	24	11	14
•	-	B	1/2 - 3/8	770 130 119	26	26	13	16
•	-	G	1/2 - 3/8	770 130 219	26	26	13	16
•	-	B	1/2 - 3/4	770 130 121	31	30	18	15
•	-	G	1/2 - 3/4	770 130 221	31	30	18	15
•	-	B	1/2 - 1	770 130 130	34	32	21	15
•	-	G	1/2 - 1	770 130 230	34	32	21	15
•	-	B	3/4 - 1/4	770 130 122	26	27	11	17
•	-	G	3/4 - 1/4	770 130 222	26	27	11	17
•	-	B	3/4 - 3/8	770 130 124	28	28	13	18
•	-	G	3/4 - 3/8	770 130 224	28	28	13	18
•	-	B	3/4 - 1/2	770 130 127	30	31	15	18
•	-	G	3/4 - 1/2	770 130 227	30	31	15	18
•	-	B	3/4 - 1	770 130 132	36	35	21	18
•	-	G	3/4 - 1	770 130 232	36	35	21	18
•	-	B	1 - 1/4	770 130 133	28	31	11	21
•	-	G	1 - 1/4	770 130 233	28	31	11	21
•	-	B	1 - 3/8	770 130 134	30	32	13	22
•	-	G	1 - 3/8	770 130 234	30	32	13	22
•	-	B	1 - 1/2	770 130 137	32	34	15	21
•	-	G	1 - 1/2	770 130 237	32	34	15	21
•	-	B	1 - 3/4	770 130 140	35	36	18	21
•	-	G	1 - 3/4	770 130 240	35	36	18	21
•	-	B	1 - 1 1/4	770 130 145	42	40	25	21
•	-	G	1 - 1 1/4	770 130 245	42	40	25	21
•	-	B	1 - 1 1/2	770 130 159	46	42	29	23
•	-	G	1 - 1 1/2	770 130 259	46	42	29	23
•	-	B	1 1/4 - 3/8	770 130 146	32	36	13	26
•	-	G	1 1/4 - 3/8	770 130 246	32	36	13	26
•	-	B	1 1/4 - 1/2	770 130 148	34	38	15	25
•	-	G	1 1/4 - 1/2	770 130 248	34	38	15	25
•	-	B	1 1/4 - 3/4	770 130 151	36	41	17	26
•	-	G	1 1/4 - 3/4	770 130 251	36	41	17	26
•	-	B	1 1/4 - 1	770 130 155	40	42	21	25
•	-	G	1 1/4 - 1	770 130 255	40	42	21	25
•	-	B	1 1/4 - 1 1/2	770 130 161	48	46	29	27
•	-	G	1 1/4 - 1 1/2	770 130 261	48	46	29	27
•	-	B	1 1/4 - 2	770 130 177	54	48	35	24
•	-	G	1 1/4 - 2	770 130 277	54	48	35	24
-	•	B	1 1/2 - 3/8	770 130 162	33	38	14	28
-	•	G	1 1/2 - 3/8	770 130 262	33	38	14	28
•	-	B	1 1/2 - 1/2	770 130 164	36	42	17	29
•	-	G	1 1/2 - 1/2	770 130 264	36	42	17	29
•	-	B	1 1/2 - 3/4	770 130 166	38	44	19	29
•	-	G	1 1/2 - 3/4	770 130 266	38	44	19	29
•	-	B	1 1/2 - 1	770 130 169	42	46	23	29
•	-	G	1 1/2 - 1	770 130 269	42	46	23	29
•	-	B	1 1/2 - 1 1/4	770 130 172	46	48	27	29
•	-	G	1 1/2 - 1 1/4	770 130 272	46	48	27	29
•	-	B	1 1/2 - 2	770 130 179	55	52	36	28
•	-	G	1 1/2 - 2	770 130 279	55	52	36	28
•	-	B	2 - 1/2	770 130 181	38	48	14	35
•	-	G	2 - 1/2	770 130 281	38	48	14	35
•	-	B	2 - 3/4	770 130 183	40	50	16	35
•	-	G	2 - 3/4	770 130 283	40	50	16	35



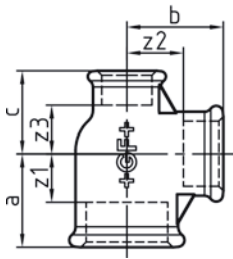
EN	BS		Dim. (1-2) [inch]	Code	a [mm]	b [mm]	z1 [mm]	z2 [mm]	
•	-	B	2 - 1	770 130 185	44	52	20	35	
•	-	G	2 - 1	770 130 285	44	52	20	35	
•	-	B	2 - 1 ¼	770 130 188	48	54	24	35	
•	-	G	2 - 1 ¼	770 130 288	48	54	24	35	
•	-	B	2 - 1 ½	770 130 191	52	55	28	36	
•	-	G	2 - 1 ½	770 130 291	52	55	28	36	
-	•	B	2 - 2 ½	770 130 197	66	61	42	34	
-	•	G	2 - 2 ½	770 130 297	66	61	42	34	
-	•	B	2 ½ - ½	770 130 198	41	56	14	43	
-	•	G	2 ½ - ½	770 130 298	41	56	14	43	
-	•	B	2 ½ - ¾	770 130 199	45	59	18	44	
-	•	G	2 ½ - ¾	770 130 299	45	59	18	44	
•	-	B	2 ½ - 1	770 129 115	47	60	20	43	
•	-	G	2 ½ - 1	770 129 215	47	60	20	43	
•	-	B	2 ½ - 1 ¼	770 129 116	52	62	25	43	
•	-	G	2 ½ - 1 ¼	770 129 216	52	62	25	43	
•	-	B	2 ½ - 1 ½	770 129 118	55	63	28	44	
•	-	G	2 ½ - 1 ½	770 129 218	55	63	28	44	
•	-	B	2 ½ - 2	770 129 120	61	66	34	42	
•	-	G	2 ½ - 2	770 129 220	61	66	34	42	
-	•	G	3 - ½	770 129 224	46	63	15	50	
-	•	G	3 - ¾	770 129 225	48	66	18	51	
•	-	G	3 - 1	770 129 226	51	67	21	50	
•	-	G	3 - 1 ¼	770 129 227	55	70	25	51	
•	-	G	3 - 1 ½	770 129 228	58	71	28	52	
•	-	G	3 - 2	770 129 230	64	73	34	49	
•	-	B	3 - 2 ½	770 129 131	72	76	42	49	
•	-	G	3 - 2 ½	770 129 231	72	76	42	49	
-	•	G	4 - 1	770 129 233	56	80	20	63	
-	•	G	4 - 1 ½	770 129 235	64	84	28	65	
•	-	G	4 - 2	770 129 236	70	86	34	62	
-	•	G	4 - 2 ½	770 129 237	77	89	41	62	
•	-	G	4 - 3	770 129 238	84	92	48	62	



130

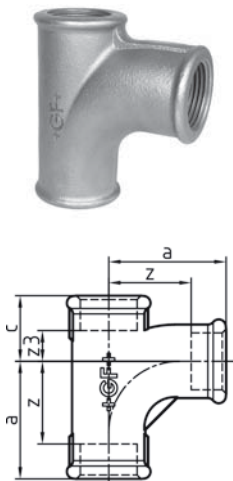
Tee, reducing or increasing on the branch, reducing on the run, ISO/EN B1

EN	BS		Dim. (1-2-3) [inch]	Code	a [mm]	b [mm]	c [mm]	z1 [mm]	z2 [mm]	z3 [mm]
•	-	B	1/2 - 3/8 - 3/8	770 130 118	26	26	25	13	16	15
•	-	G	1/2 - 3/8 - 3/8	770 130 218	26	26	25	13	16	15
•	-	B	1/2 - 1/2 - 3/8	770 130 120	28	28	26	15	15	16
•	-	G	1/2 - 1/2 - 3/8	770 130 220	28	28	26	15	15	16
•	-	B	3/4 - 3/8 - 1/2	770 130 123	28	28	26	13	18	13
•	-	G	3/4 - 3/8 - 1/2	770 130 223	28	28	26	13	18	13
•	-	B	3/4 - 1/2 - 3/8	770 130 125	30	31	26	15	18	16
•	-	G	3/4 - 1/2 - 3/8	770 130 225	30	31	26	15	18	16
•	-	B	3/4 - 1/2 - 1/2	770 130 126	30	31	28	15	18	15
•	-	G	3/4 - 1/2 - 1/2	770 130 226	30	31	28	15	18	15
•	-	B	3/4 - 3/4 - 3/8	770 130 128	33	33	28	18	18	18
•	-	G	3/4 - 3/4 - 3/8	770 130 228	33	33	28	18	18	18
•	-	B	3/4 - 3/4 - 1/2	770 130 129	33	33	31	18	18	18
•	-	G	3/4 - 3/4 - 1/2	770 130 229	33	33	31	18	18	18
-	-	B	3/4 - 1 - 1/2	770 130 131	36	35	34	21	18	21
-	-	G	3/4 - 1 - 1/2	770 130 231	36	35	34	21	18	21
•	-	B	1 - 1/2 - 1/2	770 130 135	32	34	28	15	21	15
•	-	G	1 - 1/2 - 1/2	770 130 235	32	34	28	15	21	15
•	-	B	1 - 1/2 - 3/4	770 130 136	32	34	30	15	21	15
•	-	G	1 - 1/2 - 3/4	770 130 236	32	34	30	15	21	15
•	-	B	1 - 3/4 - 1/2	770 130 138	35	36	31	18	21	18
•	-	G	1 - 3/4 - 1/2	770 130 238	35	36	31	18	21	18
•	-	B	1 - 3/4 - 3/4	770 130 139	35	36	33	18	21	18
•	-	G	1 - 3/4 - 3/4	770 130 239	35	36	33	18	21	18
•	-	B	1 - 1 - 3/8	770 130 141	38	38	32	21	21	22
•	-	G	1 - 1 - 3/8	770 130 241	38	38	32	21	21	22
•	-	B	1 - 1 - 1/2	770 130 142	38	38	34	21	21	21
•	-	G	1 - 1 - 1/2	770 130 242	38	38	34	21	21	21
•	-	B	1 - 1 - 3/4	770 130 143	38	38	36	21	21	21
•	-	G	1 - 1 - 3/4	770 130 243	38	38	36	21	21	21
-	-	B	1 - 1 1/4 - 3/4	770 130 144	42	40	41	25	21	26
-	-	G	1 - 1 1/4 - 3/4	770 130 244	42	40	41	25	21	26
•	-	B	1 1/4 - 1/2 - 1	770 130 147	34	38	32	15	25	15
•	-	G	1 1/4 - 1/2 - 1	770 130 247	34	38	32	15	25	15
•	-	B	1 1/4 - 3/4 - 3/4	770 130 149	36	41	33	17	26	18
•	-	G	1 1/4 - 3/4 - 3/4	770 130 249	36	41	33	17	26	18
•	-	B	1 1/4 - 3/4 - 1	770 130 150	36	41	35	17	26	18
•	-	G	1 1/4 - 3/4 - 1	770 130 250	36	41	35	17	26	18
•	-	B	1 1/4 - 1 - 3/4	770 130 153	40	42	36	21	25	21
•	-	G	1 1/4 - 1 - 3/4	770 130 253	40	42	36	21	25	21
•	-	B	1 1/4 - 1 - 1	770 130 154	40	42	38	21	25	21
•	-	G	1 1/4 - 1 - 1	770 130 254	40	42	38	21	25	21
•	-	B	1 1/4 - 1 1/4 - 1/2	770 130 156	45	45	38	26	26	25
•	-	G	1 1/4 - 1 1/4 - 1/2	770 130 256	45	45	38	26	26	25
•	-	B	1 1/4 - 1 1/4 - 3/4	770 130 157	45	45	41	26	26	26
•	-	G	1 1/4 - 1 1/4 - 3/4	770 130 257	45	45	41	26	26	26
•	-	B	1 1/4 - 1 1/4 - 1	770 130 158	45	45	42	26	26	25
•	-	G	1 1/4 - 1 1/4 - 1	770 130 258	45	45	42	26	26	25
-	-	B	1 1/4 - 1 1/2 - 1	770 130 160	48	46	46	29	27	29
-	-	G	1 1/4 - 1 1/2 - 1	770 130 260	48	46	46	29	27	29
•	-	B	1 1/2 - 1/2 - 1 1/4	770 130 163	36	42	34	17	29	15
•	-	G	1 1/2 - 1/2 - 1 1/4	770 130 263	36	42	34	17	29	15
•	-	B	1 1/2 - 3/4 - 1 1/4	770 130 165	38	44	36	19	29	17
•	-	G	1 1/2 - 3/4 - 1 1/4	770 130 265	38	44	36	19	29	17
•	-	B	1 1/2 - 1 - 1	770 130 167	42	46	38	23	29	21
•	-	G	1 1/2 - 1 - 1	770 130 267	42	46	38	23	29	21
•	-	B	1 1/2 - 1 - 1 1/4	770 130 168	42	46	38	23	29	21
•	-	G	1 1/2 - 1 - 1 1/4	770 130 268	42	46	38	23	29	21
•	-	B	1 1/2 - 1 1/4 - 1	770 130 170	46	48	42	27	29	25
•	-	G	1 1/2 - 1 1/4 - 1	770 130 270	46	48	42	27	29	25

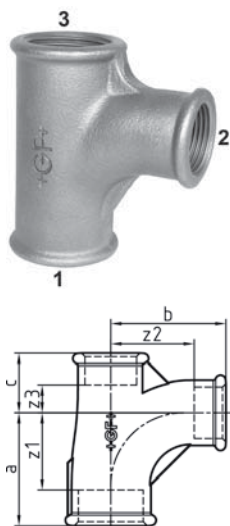


EN	BS		Dim. (1-2-3) [inch]	Code	a [mm]	b [mm]	c [mm]	z1 [mm]	z2 [mm]	z3 [mm]
•	-	B	1 1/2 - 1 1/4 - 1 1/4	770 130 171	46	48	45	27	29	26
•	-	G	1 1/2 - 1 1/4 - 1 1/4	770 130 271	46	48	45	27	29	26
•	-	B	1 1/2 - 1 1/2 - 1/2	770 130 173	50	50	42	31	31	29
•	-	G	1 1/2 - 1 1/2 - 1/2	770 130 273	50	50	42	31	31	29
•	-	B	1 1/2 - 1 1/2 - 3/4	770 130 174	50	50	44	31	31	29
•	-	G	1 1/2 - 1 1/2 - 3/4	770 130 274	50	50	44	31	31	29
•	-	B	1 1/2 - 1 1/2 - 1	770 130 175	50	50	46	31	31	29
•	-	G	1 1/2 - 1 1/2 - 1	770 130 275	50	50	46	31	31	29
•	-	B	1 1/2 - 1 1/2 - 1 1/4	770 130 176	50	50	48	31	31	29
•	-	G	1 1/2 - 1 1/2 - 1 1/4	770 130 276	50	50	48	31	31	29
-	-	B	1 1/2 - 2 - 1 1/4	770 130 178	56	54	56	37	30	37
-	-	G	1 1/2 - 2 - 1 1/4	770 130 278	56	54	56	37	30	37
-	-	B	2 - 1/2 - 1 1/2	770 130 180	38	48	38	14	35	19
-	-	G	2 - 1/2 - 1 1/2	770 130 280	38	48	38	14	35	19
•	-	B	2 - 3/4 - 1 1/2	770 130 182	40	50	38	16	35	19
•	-	G	2 - 3/4 - 1 1/2	770 130 282	40	50	38	16	35	19
•	-	B	2 - 1 - 1 1/2	770 130 184	44	52	42	20	35	23
•	-	G	2 - 1 - 1 1/2	770 130 284	44	52	42	20	35	23
•	-	B	2 - 1 1/4 - 1 1/4	770 130 186	48	54	45	24	35	26
•	-	G	2 - 1 1/4 - 1 1/4	770 130 286	48	54	45	24	35	26
•	-	B	2 - 1 1/4 - 1 1/2	770 130 187	48	54	46	24	35	27
•	-	G	2 - 1 1/4 - 1 1/2	770 130 287	48	54	46	24	35	27
•	-	B	2 - 1 1/2 - 1 1/2	770 130 190	52	55	50	28	36	31
•	-	G	2 - 1 1/2 - 1 1/2	770 130 290	52	55	50	28	36	31
-	•	B	2 - 2 - 1/2	770 130 192	58	58	48	34	34	35
-	•	G	2 - 2 - 1/2	770 130 292	58	58	48	34	34	35
•	-	B	2 - 2 - 3/4	770 130 193	58	58	50	34	34	35
•	-	G	2 - 2 - 3/4	770 130 293	58	58	50	34	34	35
•	-	B	2 - 2 - 1	770 130 194	58	58	52	34	34	35
•	-	G	2 - 2 - 1	770 130 294	58	58	52	34	34	35
•	-	B	2 - 2 - 1 1/4	770 130 195	58	58	54	34	34	35
•	-	G	2 - 2 - 1 1/4	770 130 295	58	58	54	34	34	35
•	-	B	2 - 2 - 1 1/2	770 130 196	58	58	55	34	34	36
•	-	G	2 - 2 - 1 1/2	770 130 296	58	58	55	34	34	36
-	•	B	2 1/2 - 2 - 2	770 129 119	67	72	62	40	48	38
-	•	G	2 1/2 - 2 - 2	770 129 219	67	72	62	40	48	38
-	•	G	2 1/2 - 2 1/2 - 1	770 129 221	71	71	71	44	44	54
-	•	G	2 1/2 - 2 1/2 - 1 1/2	770 129 222	69	69	64	42	42	45
-	•	G	2 1/2 - 2 1/2 - 2	770 129 223	73	73	68	46	46	34
-	•	G	3 - 2 - 2	770 129 229	64	73	60	34	49	36
-	•	G	3 - 3 - 2	770 129 232	78	79	72	48	49	48

131 Pitcher tee, equal, ISO/EN E1

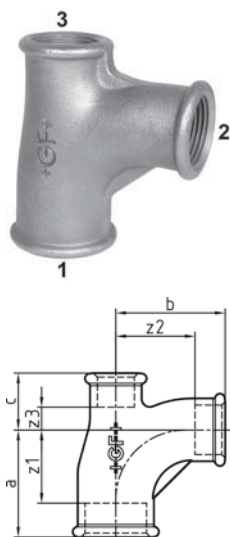


EN		Dim. [inch]	Code	a [mm]	c [mm]	z [mm]	z3 [mm]
•	B	1/2	770 131 104	45	24	32	11
•	G	1/2	770 131 204	45	24	32	11
•	B	3/4	770 131 105	50	28	35	13
•	G	3/4	770 131 205	50	28	35	13
•	B	1	770 131 106	63	33	46	16
•	G	1	770 131 206	63	33	46	16
•	B	1 1/4	770 131 107	76	40	57	21
•	G	1 1/4	770 131 207	76	40	57	21
•	B	1 1/2	770 131 108	85	43	66	24
•	G	1 1/2	770 131 208	85	43	66	24
•	B	2	770 131 109	102	53	78	29
•	G	2	770 131 209	102	53	78	29
-	B	2 1/2	770 131 110	115	62	88	35
-	G	2 1/2	770 131 210	115	62	88	35
-	B	3	770 131 111	127	70	97	40
-	G	3	770 131 211	127	70	97	40
-	B	4	770 131 112	165	87	129	51
-	G	4	770 131 212	165	87	129	51



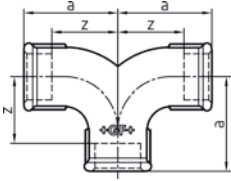
131 Pitcher tee, reducing on the branch, ISO/EN E1

EN		Dim. (1-2) [inch]	Code	a [mm]	b [mm]	c [mm]	z1 [mm]	z2 [mm]	z3 [mm]
•	B	¾ - ½	770 131 116	47	48	25	32	35	10
•	G	¾ - ½	770 131 216	47	48	25	32	35	10
•	B	1 - ½	770 131 119	49	51	28	32	38	11
•	G	1 - ½	770 131 219	49	51	28	32	38	11
•	B	1 - ¾	770 131 121	53	54	30	36	39	13
•	G	1 - ¾	770 131 221	53	54	30	36	39	13
•	B	1 ¼ - ½	770 131 122	51	56	30	32	43	11
•	G	1 ¼ - ½	770 131 222	51	56	30	32	43	11
•	B	1 ¼ - ¾	770 131 123	55	58	33	36	43	14
•	G	1 ¼ - ¾	770 131 223	55	58	33	36	43	14
•	B	1 ½ - 1	770 131 125	66	68	36	47	51	17
•	G	1 ½ - 1	770 131 225	66	68	36	47	51	17
-	B	1 ½ - ½	770 131 140	52	58	29	33	45	10
-	G	1 ½ - ½	770 131 240	52	58	29	33	45	10
•	B	1 ½ - ¾	770 131 126	55	61	33	36	46	14
•	G	1 ½ - ¾	770 131 226	55	61	33	36	46	14
•	B	1 ½ - 1	770 131 127	66	71	36	47	54	17
•	G	1 ½ - 1	770 131 227	66	71	36	47	54	17
•	B	1 ½ - 1 ¼	770 131 128	77	79	41	58	60	22
•	G	1 ½ - 1 ¼	770 131 228	77	79	41	58	60	22
-	B	2 - ¾	770 131 129	69	75	39	45	60	15
-	G	2 - ¾	770 131 229	69	75	39	45	60	15
•	B	2 - 1	770 131 130	70	77	40	46	60	16
•	G	2 - 1	770 131 230	70	77	40	46	60	16
•	B	2 - 1 ¼	770 131 131	80	85	45	56	66	21
•	G	2 - 1 ¼	770 131 231	80	85	45	56	66	21
•	B	2 - 1 ½	770 131 132	91	94	48	67	75	24
•	G	2 - 1 ½	770 131 232	91	94	48	67	75	24
-	G	2 ½ - 1 ¼	770 131 233	103	108	58	76	89	31
-	B	3 - 2	770 131 135	138	143	69	108	119	39
-	G	3 - 2	770 131 235	138	143	69	108	119	39



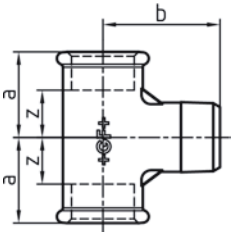
131 Pitcher tee, equal or reducing on the branch and run, ISO/EN E1

EN		Dim. (1-2-3) [inch]	Code	a [mm]	b [mm]	c [mm]	z1 [mm]	z2 [mm]	z3 [mm]
•	B	¾ - ½ - ½	770 131 115	47	48	24	31	34	11
•	G	¾ - ½ - ½	770 131 215	47	48	24	31	34	11
•	B	¾ - ¾ - ½	770 131 117	49	49	27	34	34	14
•	G	¾ - ¾ - ½	770 131 217	49	49	27	34	34	14
-	B	1 - ½ - ¾	770 131 118	49	51	25	32	38	10
-	G	1 - ½ - ¾	770 131 218	49	51	25	32	38	10
•	B	1 - ¾ - ¾	770 131 120	53	54	28	36	39	13
•	G	1 - ¾ - ¾	770 131 220	53	54	28	36	39	13



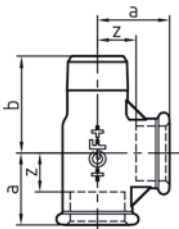
132 Twin elbow, equal, ISO/EN E2

EN		Dim. [inch]	Code	a [mm]	z [mm]
•	B	½	770 132 104	45	32
•	G	½	770 132 204	45	32
•	B	¾	770 132 105	50	35
•	G	¾	770 132 205	50	35
•	B	1	770 132 106	63	46
•	G	1	770 132 206	63	46
•	B	1 ¼	770 132 107	76	57
•	G	1 ¼	770 132 207	76	57
•	B	1 ½	770 132 108	85	66
•	G	1 ½	770 132 208	85	66
•	B	2	770 132 109	102	78
•	G	2	770 132 209	102	78



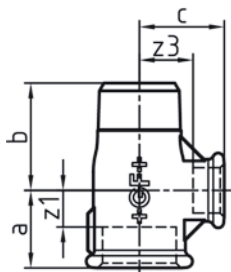
133 Tee, equal

EN		Dim. [inch]	Code	a [mm]	b [mm]	z [mm]
-	B	¾	770 133 103	22	31	12
-	G	¾	770 133 203	22	31	12
-	B	½	770 133 104	25	38	12
-	G	½	770 133 204	25	38	12
-	B	¾	770 133 105	33	45	18
-	G	¾	770 133 205	33	45	18
-	B	1	770 133 106	39	53	22
-	G	1	770 133 206	39	53	22



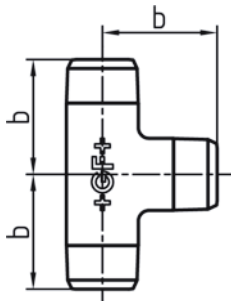
134 Tee, equal

EN		Dim. [inch]	Code	a [mm]	b [mm]	z [mm]
-	B	¼	770 134 102	22	28	12
-	G	¼	770 134 202	22	28	12
-	B	¾	770 134 103	24	32	14
-	G	¾	770 134 203	24	32	14
-	B	½	770 134 104	27	37	14
-	G	½	770 134 204	27	37	14
-	B	¾	770 134 105	33	43	17
-	G	¾	770 134 205	33	43	17
-	B	1	770 134 106	37	50	20
-	G	1	770 134 206	37	50	20
-	B	1 ¼	770 134 107	45	58	26
-	G	1 ¼	770 134 207	45	58	26
-	B	1 ½	770 134 108	50	65	31
-	G	1 ½	770 134 208	50	65	31
-	B	2	770 134 109	59	69	35
-	G	2	770 134 209	59	69	35



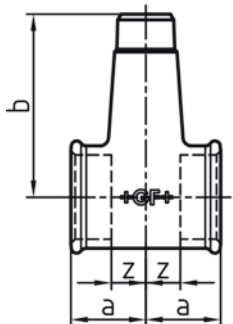
134 Tee, reducing on branch

EN		Dim. (1-2) [inch]	Code	a [mm]	b [mm]	c [mm]	z1 [mm]	z3 [mm]
-	B	1/2 - 1/4	770 134 116	24	34	24	11	14
-	G	1/2 - 1/4	770 134 216	24	34	24	11	14
-	B	3/4 - 1/2	770 134 118	30	40	30	15	17
-	G	3/4 - 1/2	770 134 218	30	40	30	15	17
-	B	1 - 1/2	770 134 119	32	44	35	15	22
-	G	1 - 1/2	770 134 219	32	44	35	15	22



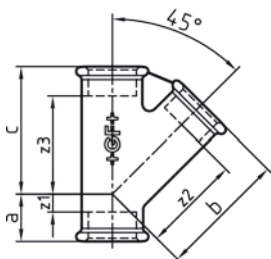
135 Tee, equal

EN		Dim. [inch]	Code	b [mm]
-	B	1/2	770 135 104	37
-	G	1/2	770 135 204	37
-	B	3/4	770 135 105	43
-	G	3/4	770 135 205	43
-	B	1	770 135 106	48
-	G	1	770 135 206	48



137 Distribution Tee reducing on branch

EN		Dim. (1-2) [inch]	Code	a [mm]	b [mm]	z [mm]	
-	G	1 ¼ - ¾	770 137 216	35	85	16	
-	G	1 ¼ - 1	770 137 217	35	75	16	
-	G	1 ½ - 1	770 137 219	40	86	21	



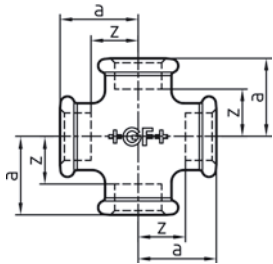
165 Tee 45°, equal

EN		Dim. [inch]	Code	a [mm]	b [mm]	c [mm]	z1 [mm]	z2 [mm]	z3 [mm]	
-	B	¾	770 165 103	16	46	46	6	36	36	
-	B	½	770 165 104	23	54	54	10	41	41	
-	G	½	770 165 204	23	54	54	10	41	41	
-	B	¾	770 165 105	24	64	64	9	49	49	
-	G	¾	770 165 205	24	64	64	9	49	49	
-	B	1	770 165 106	28	77	77	11	60	60	
-	G	1	770 165 206	28	77	77	11	60	60	
-	B	1 ¼	770 165 107	34	91	91	14	72	72	
-	G	1 ¼	770 165 207	34	91	91	14	72	72	
-	B	1 ½	770 165 108	34	98	98	15	79	79	
-	G	1 ½	770 165 208	34	98	98	15	79	79	
-	B	2	770 165 109	40	106	106	16	82	82	
-	G	2	770 165 209	40	106	106	16	82	82	



180 Cross, equal, ISO/EN C1

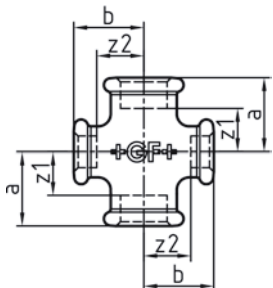
* Available as long as our stock will last



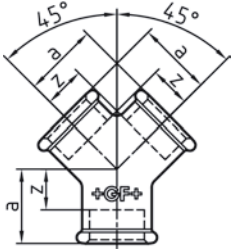
EN		Dim. [inch]	Code	a [mm]	z [mm]
•	B	¼	770 180 102	21	11
•	G	¼	770 180 202	21	11
•	B	⅜	770 180 103	25	15
•	G	⅜	770 180 203	25	15
•	B	½	770 180 104	28	15
•	G	½	770 180 204	28	15
•	B	¾	770 180 105	33	18
•	G	¾	770 180 205	33	18
•	B	1	770 180 106	38	21
•	G	1	770 180 206	38	21
•	B	1 ¼	770 180 107	45	26
•	G	1 ¼	770 180 207	45	26
•	B	1 ½	770 180 108	50	31
•	G	1 ½	770 180 208	50	31
•	B	2	770 180 109	58	34
•	G	2	770 180 209	58	34
•	B	2 ½	770 180 110	69	42
•	G	2 ½	770 180 210	69	42
•	B	3	770 180 111	78	48
•	G	3	770 180 211	78	48
*•	B	4	770 180 112	96	60
•	G	4	770 180 212	96	60



180 Cross, reducing, ISO/EN C1

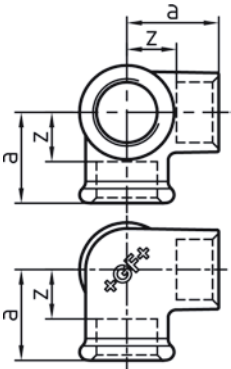


EN		Dim. (1-2) [inch]	Code	a [mm]	b [mm]	z1 [mm]	z2 [mm]
•	B	¾ - ½	770 180 115	30	31	15	18
•	G	¾ - ½	770 180 215	30	31	15	18
•	B	1 - ½	770 180 116	32	34	15	21
•	G	1 - ½	770 180 216	32	34	15	21
•	B	1 - ¾	770 180 117	35	36	18	21
•	G	1 - ¾	770 180 217	35	36	18	21
•	B	1 ¼ - 1	770 180 118	40	42	21	25
•	G	1 ¼ - 1	770 180 218	40	42	21	25
•	B	1 ½ - 1	770 180 120	42	46	23	29
•	G	1 ½ - 1	770 180 220	42	46	23	29
-	B	2 - 1	770 180 121	44	52	20	35
-	G	2 - 1	770 180 221	44	52	20	35



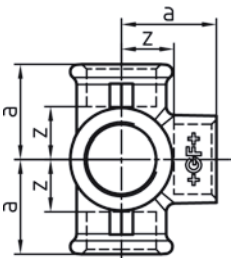
220 Y-piece

EN		Dim. [inch]	Code	a [mm]	z [mm]
-	B	3/8	770 220 103	24	14
-	G	3/8	770 220 203	24	14
-	B	1/2	770 220 104	27	14
-	G	1/2	770 220 204	27	14
-	B	3/4	770 220 105	33	18
-	G	3/4	770 220 205	33	18
-	B	1	770 220 106	40	23
-	G	1	770 220 206	40	23



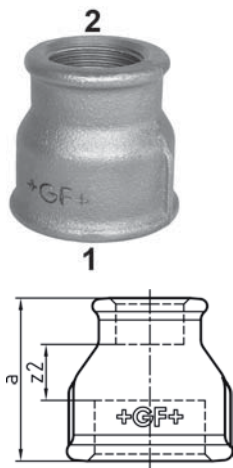
221 Side outlet elbow, ISO/EN Za1

EN		Dim. [inch]	Code	a [mm]	z [mm]
•	B	3/8	770 221 103	25	15
•	G	3/8	770 221 203	25	15
•	B	1/2	770 221 104	28	15
•	G	1/2	770 221 204	28	15
•	B	3/4	770 221 105	33	18
•	G	3/4	770 221 205	33	18
•	B	1	770 221 106	38	21
•	G	1	770 221 206	38	21
-	B	1 1/4	770 221 107	45	26
-	G	1 1/4	770 221 207	45	26
-	B	1 1/2	770 221 108	50	31
-	G	1 1/2	770 221 208	50	31
-	B	2	770 221 109	58	34
-	G	2	770 221 209	58	34



223 Side outlet tee, ISO/EN Za2

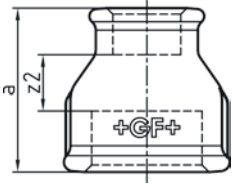
EN		Dim. [inch]	Code	a [mm]	z [mm]
•	B	1/2	770 223 104	28	15
•	G	1/2	770 223 204	28	15
•	B	3/4	770 223 105	33	18
•	G	3/4	770 223 205	33	18
•	B	1	770 223 106	38	21
•	G	1	770 223 206	38	21



240 Socket, reducing, ISO/EN M2

ST ... these types of fittings are made from steel (galvanised finish = electroplated) and not suitable for drinking water installations. Steel parts are hexagonal instead of beaded at the end no. 1.

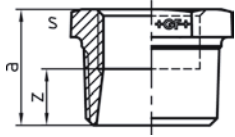
EN		Dim. (1-2) [inch]	Code	a [mm]	s [mm]	z2 [mm]
ST.	B	¼ - ⅛	770 240 115	27	17	10
ST.	G	¼ - ⅛	770 240 215	27	17	10
ST.	B	⅜ - ⅛	770 240 116	30	22	13
ST.	G	⅜ - ⅛	770 240 216	30	22	13
ST.	B	⅜ - ¼	770 240 117	30	22	10
ST.	G	⅜ - ¼	770 240 217	30	22	10
•	B	½ - ¼	770 240 118	36		13
•	G	½ - ¼	770 240 218	36		13
•	B	½ - ⅜	770 240 119	36		13
•	G	½ - ⅜	770 240 219	36		13
•	B	¾ - ¼	770 240 120	39		14
•	G	¾ - ¼	770 240 220	39		14
•	B	¾ - ⅜	770 240 121	39		14
•	G	¾ - ⅜	770 240 221	39		14
•	B	¾ - ½	770 240 122	39		11
•	G	¾ - ½	770 240 222	39		11
•	B	1 - ⅜	770 240 123	45		18
•	G	1 - ⅜	770 240 223	45		18
•	B	1 - ½	770 240 124	45		15
•	G	1 - ½	770 240 224	45		15
•	B	1 - ¾	770 240 125	45		13
•	G	1 - ¾	770 240 225	45		13
-	B	1 ¼ - ⅜	770 240 126	50		21
-	G	1 ¼ - ⅜	770 240 226	50		21
•	B	1 ¼ - ½	770 240 127	50		18
•	G	1 ¼ - ½	770 240 227	50		18
•	B	1 ¼ - ¾	770 240 128	50		16
•	G	1 ¼ - ¾	770 240 228	50		16
•	B	1 ¼ - 1	770 240 129	50		14
•	G	1 ¼ - 1	770 240 229	50		14
•	B	1 ½ - ½	770 240 130	55		23
•	G	1 ½ - ½	770 240 230	55		23
•	B	1 ½ - ¾	770 240 131	55		21
•	G	1 ½ - ¾	770 240 231	55		21
•	B	1 ½ - 1	770 240 132	55		19
•	G	1 ½ - 1	770 240 232	55		19
•	B	1 ½ - 1 ¼	770 240 133	55		17
•	G	1 ½ - 1 ¼	770 240 233	55		17
•	B	2 - ½	770 240 134	65		28
•	G	2 - ½	770 240 234	65		28
•	B	2 - ¾	770 240 135	65		26
•	G	2 - ¾	770 240 235	65		26
•	B	2 - 1	770 240 136	65		24
•	G	2 - 1	770 240 236	65		24
•	B	2 - 1 ¼	770 240 137	65		22
•	G	2 - 1 ¼	770 240 237	65		22
•	B	2 - 1 ½	770 240 138	65		22
•	G	2 - 1 ½	770 240 238	65		22
-	B	2 ½ - 1	770 240 139	74		30
-	G	2 ½ - 1	770 240 239	74		30
•	B	2 ½ - 1 ¼	770 240 140	74		28
•	G	2 ½ - 1 ¼	770 240 240	74		28
•	B	2 ½ - 1 ½	770 240 141	74		28
•	G	2 ½ - 1 ½	770 240 241	74		28
•	B	2 ½ - 2	770 240 142	74		23
•	G	2 ½ - 2	770 240 242	74		23
-	B	3 - 1 ½	770 240 143	80		31
-	G	3 - 1 ½	770 240 243	80		31
•	B	3 - 2	770 240 144	80		26



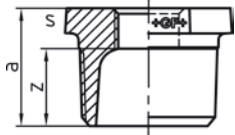
EN		Dim. (1-2) [inch]	Code	a [mm]	s [mm]	z2 [mm]	
•	G	3 - 2	770 240 244	80		26	
•	B	3 - 2 ½	770 240 145	80		23	
•	G	3 - 2 ½	770 240 245	80		23	
•	B	4 - 2	770 240 146	94		34	
•	G	4 - 2	770 240 246	94		34	
•	B	4 - 2 ½	770 240 147	94		31	
•	G	4 - 2 ½	770 240 247	94		31	
•	B	4 - 3	770 240 148	94		28	
•	G	4 - 3	770 240 248	94		28	



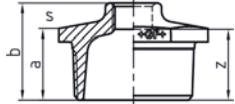
Form I



Form II



Form III

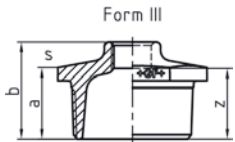
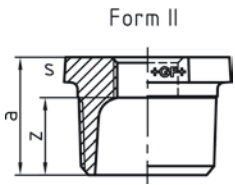
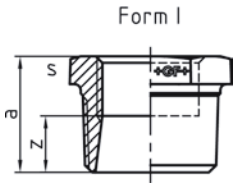


241 Reducing bush, ISO/EN N4

Forms I, II, III are available only as marked under column "Form", Form I can also be supplied with continuous internal thread (=241D).

ST ... these types of fittings are made from steel (galvanised finish = electroplated) and not suitable for drinking water installations.

EN		Dim. (1-2) [inch]	Form	Code	a [mm]	b [mm]	z [mm]	s [mm]
ST.	B	¼ - ⅛	I	770 241 115	20		13	17
ST.	G	¼ - ⅛	I	770 241 215	20		13	17
ST.	B	⅜ - ⅛	I	770 241 116	20		13	19
ST.	G	⅜ - ⅛	I	770 241 216	20		13	19
ST.	B	⅜ - ¼	I	770 241 117	20		10	19
ST.	G	⅜ - ¼	I	770 241 217	20		10	19
•	B	½ - ⅛	II	770 241 118	24		17	23
•	G	½ - ⅛	II	770 241 218	24		17	23
•	B	½ - ¼	I	770 241 119	24		14	23
•	G	½ - ¼	I	770 241 219	24		14	23
•	B	½ - ⅜	I	770 241 120	24		14	23
•	G	½ - ⅜	I	770 241 220	24		14	23
•	B	¾ - ¼	II	770 241 121	26		16	30
•	G	¾ - ¼	II	770 241 221	26		16	30
•	B	¾ - ⅜	II	770 241 122	27		16	30
•	G	¾ - ⅜	II	770 241 222	27		16	30
•	B	¾ - ½	I	770 241 123	26		13	30
•	G	¾ - ½	I	770 241 223	26		13	30
•	B	1 - ¼	II	770 241 124	29		19	36
•	G	1 - ¼	II	770 241 224	29		19	36
•	B	1 - ⅜	II	770 241 125	29		19	36
•	G	1 - ⅜	II	770 241 225	29		19	36
•	B	1 - ½	II	770 241 126	29		16	36
•	G	1 - ½	II	770 241 226	29		16	36
•	B	1 - ¾	II	770 241 127	29		14	36
•	G	1 - ¾	II	770 241 227	29		14	36
•	B	1 ¼ - ⅜	II	770 241 128	31		21	46
•	G	1 ¼ - ⅜	II	770 241 228	31		21	46
•	B	1 ¼ - ½	II	770 241 129	31		18	46
•	G	1 ¼ - ½	II	770 241 229	31		18	46
•	B	1 ¼ - ¾	II	770 241 130	31		16	46
•	G	1 ¼ - ¾	II	770 241 230	31		16	46
•	B	1 ¼ - 1	II	770 241 131	31		14	46
•	G	1 ¼ - 1	II	770 241 231	31		14	46
•	B	1 ½ - ⅜	II	770 241 132	31		21	50
•	G	1 ½ - ⅜	II	770 241 232	31		21	50
•	B	1 ½ - ½	II	770 241 133	31		18	50
•	G	1 ½ - ½	II	770 241 233	31		18	50
•	B	1 ½ - ¾	II	770 241 134	31		16	50
•	G	1 ½ - ¾	II	770 241 234	31		16	50
•	B	1 ½ - 1	II	770 241 135	31		14	50
•	G	1 ½ - 1	II	770 241 235	31		14	50
•	B	1 ½ - 1 ¼	I	770 241 136	33		12	50
•	G	1 ½ - 1 ¼	I	770 241 236	33		12	50
•	B	2 - ½	III	770 241 137	35	48	35	65
•	G	2 - ½	III	770 241 237	35	48	35	65
•	B	3 - ¾	III	770 241 138	35	48	33	65
•	G	2 - ¾	III	770 241 238	35	48	33	65
•	B	2 - 1	II	770 241 139	37		20	65
•	G	2 - 1	II	770 241 239	37		20	65
•	B	2 - 1 ¼	II	770 241 140	37		18	65
•	G	2 - 1 ¼	II	770 241 240	37		18	65
•	B	2 - 1 ½	II	770 241 141	37		18	65
•	G	2 - 1 ½	II	770 241 241	37		18	65
•	B	2 ½ - 1	III	770 241 142	40	54	37	80
•	G	2 ½ - 1	III	770 241 242	40	54	37	80
•	B	2 ½ - 1 ¼	III	770 241 143	40	54	37	80
•	G	2 ½ - 1 ¼	III	770 241 243	40	54	37	80



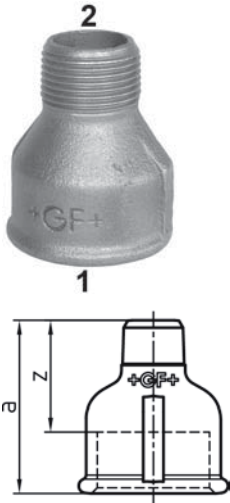
EN		Dim. (1-2) [inch]	Form	Code	a [mm]	b [mm]	z [mm]	s [mm]
•	B	2 ½ - 1 ½	II	770 241 144	40		21	80
•	G	2 ½ - 1 ½	II	770 241 244	40		21	80
•	B	2 ½ - 2	II	770 241 145	40		16	80
•	G	2 ½ - 2	II	770 241 245	40		16	80
•	B	3 - 1	III	770 241 146	44	59	42	95
•	G	3 - 1	III	770 241 246	44	59	42	95
•	B	3 - 1 ¼	III	770 241 147	44	59	40	95
•	G	3 - 1 ¼	III	770 241 247	44	59	40	95
•	B	3 - 1 ½	III	770 241 148	44	59	40	95
•	G	3 - 1 ½	III	770 241 248	44	59	40	95
•	B	3 - 2	II	770 241 149	44		20	95
•	G	3 - 2	II	770 241 249	44		20	95
•	B	3 - 2 ½	II	770 241 150	44		17	96
•	G	3 - 2 ½	II	770 241 250	44		17	96
•	B	4 - 2	III	770 241 151	51	69	45	120
•	G	4 - 2	III	770 241 251	51	69	45	120
•	B	4 - 2 ½	III	770 241 152	51	69	42	120
•	G	4 - 2 ½	III	770 241 252	51	69	42	120
•	B	4 - 3	II	770 241 153	51		21	120
•	G	4 - 3	II	770 241 253	51		21	120



245 Hexagon nipple, reducing, ISO/EN N8

ST ... these types of fittings are made from steel (galvanised finish = electroplated) and not suitable for drinking water installations.

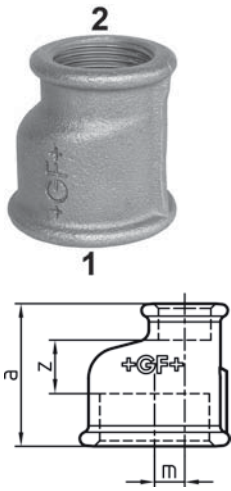
EN	BS		Dim. (1-2) [inch]	Code	a [mm]	s [mm]
ST_	•	B	¼ - ⅛	770 245 115	35	17
ST_	•	G	¼ - ⅛	770 245 215	35	17
ST_	-	B	⅜ - ⅛	770 245 116	34	19
ST_	-	G	⅜ - ⅛	770 245 216	34	19
ST•	-	B	⅜ - ¼	770 245 117	38	19
ST•	-	G	⅜ - ¼	770 245 217	38	19
•	-	B	½ - ¼	770 245 118	44	27
•	-	G	½ - ¼	770 245 218	44	27
•	-	B	½ - ⅜	770 245 119	44	22
•	-	G	½ - ⅜	770 245 219	44	22
-	-	B	¾ - ¼	770 245 120	43	30
-	-	G	¾ - ¼	770 245 220	43	30
•	-	B	¾ - ¼	770 245 121	47	30
•	-	G	¾ - ⅜	770 245 221	47	30
•	-	B	¾ - ½	770 245 122	47	31
•	-	G	¾ - ½	770 245 222	47	31
•	-	B	1 - ½	770 245 123	53	36
•	-	G	1 - ½	770 245 223	53	36
•	-	B	1 - ¾	770 245 124	53	36
•	-	G	1 - ¾	770 245 224	53	36
•	-	B	1 ¼ - ½	770 245 125	57	46
•	-	G	1 ¼ - ½	770 245 225	57	46
•	-	B	1 ¼ - ¾	770 245 126	57	46
•	-	G	1 ¼ - ¾	770 245 226	57	46
•	-	B	1 ¼ - 1	770 245 127	57	46
•	-	G	1 ¼ - 1	770 245 227	57	46
•	-	B	1 ½ - ¾	770 245 128	59	50
•	-	G	1 ½ - ¾	770 245 228	59	50
•	-	B	1 ½ - 1	770 245 129	59	50
•	-	G	1 ½ - 1	770 245 229	59	50
•	-	B	1 ½ - 1 ¼	770 245 130	59	50
•	-	G	1 ½ - 1 ¼	770 245 230	59	50
•	-	B	2 - 1	770 245 131	68	65
•	-	G	2 - 1	770 245 231	68	65
•	-	B	2 - 1 ¼	770 245 132	68	65
•	-	G	2 - 1 ¼	770 245 232	68	65
•	-	B	2 - 1 ½	770 245 133	68	65
•	-	G	2 - 1 ½	770 245 233	68	65
-	•	B	2 ½ - 1 ½	770 245 134	75	80
-	•	G	2 ½ - 1 ½	770 245 234	75	80
•	-	B	2 ½ - 2	770 245 135	75	80
•	-	G	2 ½ - 2	770 245 235	75	80
•	-	B	3 - 2	770 245 136	83	95
•	-	G	3 - 2	770 245 236	83	95
•	-	B	3 - 2 ½	770 245 137	83	95
•	-	G	3 - 2 ½	770 245 237	83	95
-	-	B	4 - 3	770 245 138	93	120
-	-	G	4 - 3	770 245 238	93	120



246 Socket, reducing, ISO/EN M4

ST ... these types of fittings are made from steel (galvanised finish = electroplated) and not suitable for drinking water installations. Steel parts are hexagonal instead of beaded at the end no. 1.

EN		Dim. (1-2) [inch]	Code	a [mm]	s [mm]	z [mm]
ST_	B	¼ - ⅛	770 246 115	32	17	22
ST_	G	¼ - ⅛	770 246 215	32	17	22
ST_	B	⅜ - ¼	770 246 116	35	22	25
ST_	G	⅜ - ¼	770 246 216	35	22	25
•	B	½ - ¼	770 246 117	43		30
•	G	½ - ¼	770 246 217	43		30
•	B	½ - ⅜	770 246 118	43		30
•	G	½ - ⅜	770 246 218	43		30
•	B	¾ - ⅜	770 246 119	48		33
•	G	¾ - ⅜	770 246 219	48		33
•	B	¾ - ½	770 246 120	48		33
•	G	¾ - ½	770 246 220	48		33
•	B	1 - ½	770 246 121	55		38
•	G	1 - ½	770 246 221	55		38
•	B	1 - ¾	770 246 122	55		38
•	G	1 - ¾	770 246 222	55		38
-	B	1 ¼ - ½	770 246 123	60		41
-	G	1 ¼ - ½	770 246 223	60		41
•	B	1 ¼ - ¾	770 246 124	60		41
•	G	1 ¼ - ¾	770 246 224	60		41
•	B	1 ¼ - 1	770 246 125	60		41
•	G	1 ¼ - 1	770 246 225	60		41
-	B	1 ½ - ¾	770 246 126	60		41
-	G	1 ½ - ¾	770 246 226	60		41
•	B	1 ½ - 1	770 246 127	63		44
•	G	1 ½ - 1	770 246 227	63		44
•	B	1 ½ - 1 ¼	770 246 128	63		44
•	G	1 ½ - 1 ¼	770 246 228	63		44
-	B	2 - 1	770 246 129	70		46
-	G	2 - 1	770 246 229	70		46
•	B	2 - 1 ¼	770 246 130	70		46
•	G	2 - 1 ¼	770 246 230	70		46
•	B	2 - 1 ½	770 246 131	70		46
•	G	2 - 1 ½	770 246 231	70		46
-	B	2 ½ - 1 ½	770 246 132	83		56
-	G	2 ½ - 1 ½	770 246 232	83		56
-	B	2 ½ - 2	770 246 133	80		53
-	G	2 ½ - 2	770 246 233	80		53
-	B	3 - 2	770 246 134	87		57
-	G	3 - 2	770 246 234	87		57
-	B	3 - 2 ½	770 246 135	91		61
-	G	3 - 2 ½	770 246 235	91		61

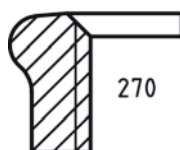
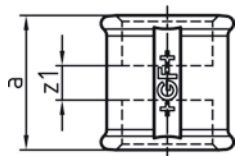


260 Socket eccentric, reducing

EN		Dim. (1-2) [inch]	Code	a [mm]	z [mm]	m [mm]
-	B	¾ - ½	770 260 122	41	13	3.0
-	G	¾ - ½	770 260 222	41	13	3.0
-	B	1 - ½	770 260 115	45	15	6.0
-	G	1 - ½	770 260 215	45	15	6.0
-	B	1 - ¾	770 260 116	45	13	3.5
-	G	1 - ¾	770 260 216	45	13	3.5
-	B	1 ¼ - ½	770 260 117	50	18	11.0
-	G	1 ¼ - ½	770 260 217	50	18	11.0
-	B	1 ¼ - ¾	770 260 118	50	16	8.0
-	G	1 ¼ - ¾	770 260 218	50	16	8.0
-	B	1 ¼ - 1	770 260 119	50	14	5.0
-	G	1 ¼ - 1	770 260 219	50	14	5.0
-	B	1 ½ - ½	770 260 120	56	24	14.0
-	G	1 ½ - ½	770 260 220	56	24	14.0
-	B	1 ½ - ¾	770 260 123	56	22	11.0
-	G	1 ½ - ¾	770 260 223	56	22	11.0
-	B	1 ½ - 1	770 260 121	56	20	8.0
-	G	1 ½ - 1	770 260 221	56	20	8.0
-	B	1 ½ - 1 ¼	770 260 124	56	18	3.0
-	G	1 ½ - 1 ¼	770 260 224	56	18	3.0
-	B	2 - ½	770 260 125	65	28	20.0
-	G	2 - ½	770 260 225	65	28	20.0
-	B	2 - ¾	770 260 126	65	26	17.0
-	G	2 - ¾	770 260 226	65	26	17.0
-	B	2 - 1	770 260 127	65	24	14.0
-	G	2 - 1	770 260 227	65	24	14.0
-	B	2 - 1 ¼	770 260 128	65	22	10.0
-	G	2 - 1 ¼	770 260 228	65	22	10.0
-	B	2 - 1 ½	770 260 129	65	22	7.0
-	G	2 - 1 ½	770 260 229	65	22	7.0
-	B	2 ½ - 2	770 260 130	74	23	8.0
-	G	2 ½ - 2	770 260 230	74	23	8.0

270 Socket, ISO/EN M2

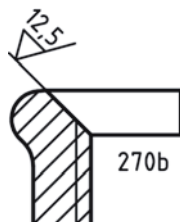
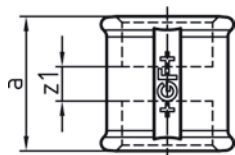
ST ... these types of fittings are made from steel (galvanised finish = electroplated) and not suitable for drinking water installations. Steel parts are hexagonal instead of beaded at the end no. 1.



EN		Dim. [inch]	Code	a [mm]	s [mm]	z1 [mm]
ST.	B	1/8	770 270 101	25	17	11
ST.	G	1/8	770 270 201	25	17	11
ST.	B	1/4	770 270 102	27	19	7
ST.	G	1/4	770 270 202	27	19	7
•	B	3/8	770 270 103	30		10
•	G	3/8	770 270 203	30		10
•	B	1/2	770 270 104	36		10
•	G	1/2	770 270 204	36		10
•	B	3/4	770 270 105	39		9
•	G	3/4	770 270 205	39		9
•	B	1	770 270 106	45		11
•	G	1	770 270 206	45		11
•	B	1 1/4	770 270 107	50		12
•	G	1 1/4	770 270 207	50		12
•	B	1 1/2	770 270 108	55		17
•	G	1 1/2	770 270 208	55		17
•	B	2	770 270 109	65		17
•	G	2	770 270 209	65		17
•	B	2 1/2	770 270 110	74		20
•	G	2 1/2	770 270 210	74		20
•	B	3	770 270 111	80		20
•	G	3	770 270 211	80		20
•	B	4	770 270 112	94		22
•	G	4	770 270 212	94		22

270b Socket, equal

Is usually not supplied as a separate piece.
One side with larger chamfer, thread = fastening thread to ISO 228.

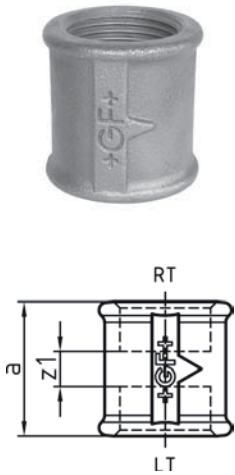


EN		Dim. [inch]	Code	a [mm]	z1 [mm]
-	G	1/2	-	36	10
-	G	3/4	-	39	9
-	G	1	-	45	11
-	G	1 1/4	-	50	12
-	G	1 1/2	-	55	17
-	G	2	-	65	17

271

Socket, right and left hand thread, ISO/EN M2 R-L

RT ... right hand thread, LT ... left hand thread

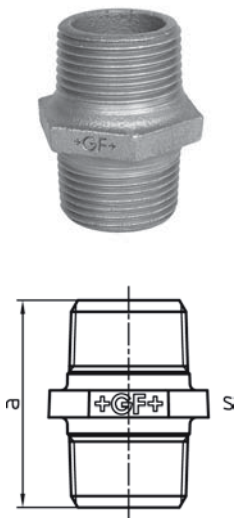


EN		Dim. [inch]	Code	a [mm]	z1 [mm]
•	B	3/8	770 271 103	30	10
•	G	3/8	770 271 203	30	10
•	B	1/2	770 271 104	36	10
•	G	1/2	770 271 204	36	10
•	B	3/4	770 271 105	39	9
•	G	3/4	770 271 205	39	9
•	B	1	770 271 106	45	11
•	G	1	770 271 206	45	11
•	B	1 1/4	770 271 107	50	12
•	G	1 1/4	770 271 207	50	12
•	B	1 1/2	770 271 108	55	17
•	G	1 1/2	770 271 208	55	17
-	B	2	770 271 109	65	17
-	G	2	770 271 209	65	17

280

Hexagon nipple, ISO/EN N8

ST ... these types of fittings are made from steel (galvanised finish = electroplated) and not suitable for drinking water installations.

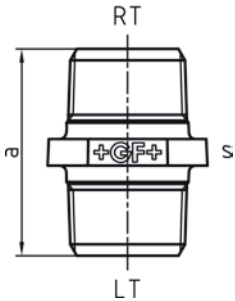


EN		Dim. [inch]	Code	a [mm]	s [mm]
ST•	B	1/8	770 280 101	29	17
ST•	G	1/8	770 280 201	29	17
ST•	B	1/4	770 280 102	36	19
ST•	G	1/4	770 280 202	36	19
•	B	3/8	770 280 103	38	22
•	G	3/8	770 280 203	38	22
•	B	1/2	770 280 104	44	28
•	G	1/2	770 280 204	44	28
•	B	3/4	770 280 105	47	33
•	G	3/4	770 280 205	47	33
•	B	1	770 280 106	53	42
•	G	1	770 280 206	53	42
•	B	1 1/4	770 280 107	57	50
•	G	1 1/4	770 280 207	57	50
•	B	1 1/2	770 280 108	59	55
•	G	1 1/2	770 280 208	59	55
•	B	2	770 280 109	68	70
•	G	2	770 280 209	68	70
•	B	2 1/2	770 280 110	75	85
•	G	2 1/2	770 280 210	75	85
•	B	3	770 280 111	83	100
•	G	3	770 280 211	83	100
•	B	4	770 280 112	95	131
•	G	4	770 280 212	95	131

281

Hexagon nipple, right and left hand thread, ISO/EN N8 R-L

RT ... right hand thread, LT ... left hand thread



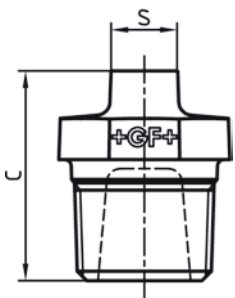
EN		Dim. [inch]	Code	a [mm]	s [mm]
-	G	3/8	770 281 203	38	22
•	B	1/2	770 281 104	44	28
•	G	1/2	770 281 204	44	28
•	B	3/4	770 281 105	47	33
•	G	3/4	770 281 205	47	33
•	B	1	770 281 106	53	42
•	G	1	770 281 206	53	42
-	B	1 1/4	770 281 107	57	50
-	G	1 1/4	770 281 207	57	50
-	B	1 1/2	770 281 108	59	55
-	G	1 1/2	770 281 208	59	55
-	B	2	770 281 109	68	70
-	G	2	770 281 209	68	70

290

Plug, beaded, ISO/EN T9

ST ... these types of fittings are made from steel (galvanised finish = electroplated) and not suitable for drinking water installations.

* Solid



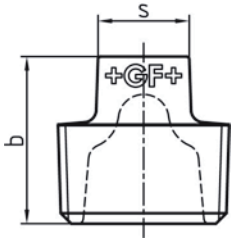
EN		Dim. [inch]	Code	c [mm]	s [mm]
ST*	B	1/8	770 290 101	20	7
ST*	G	1/8	770 290 201	20	7
ST*	B	1/4	770 290 102	24	8
ST*	G	1/4	770 290 202	24	8
•	B	3/8	770 290 103	28	10
•	G	3/8	770 290 203	28	10
•	B	1/2	770 290 104	32	11
•	G	1/2	770 290 204	32	11
•	B	3/4	770 290 105	37	17
•	G	3/4	770 290 205	37	17
•	B	1	770 290 106	41	19
•	G	1	770 290 206	41	19
•	B	1 1/4	770 290 107	47	22
•	G	1 1/4	770 290 207	47	22
•	B	1 1/2	770 290 108	47	22
•	G	1 1/2	770 290 208	47	22
•	B	2	770 290 109	53	27
•	G	2	770 290 209	53	27
•	B	2 1/2	770 290 110	64	32
•	G	2 1/2	770 290 210	64	32
•	B	3	770 290 111	71	36
•	G	3	770 290 211	71	36
•	B	4	770 290 112	81	41
•	G	4	770 290 212	81	41



291 Plug, plain, ISO/EN T8

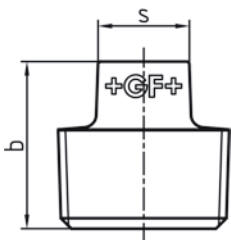
ST ... these types of fittings are made from steel (galvanised finish = electroplated) and not suitable for drinking water installations.

* Solid



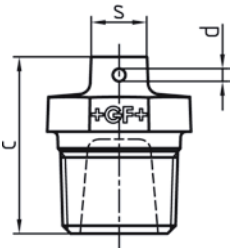
EN		Dim. [inch]	Code	b [mm]	s [mm]
ST*	B	1/8	770 291 101	16.0	7
ST*	G	1/8	770 291 201	16.0	7
ST*	B	1/4	770 291 102	18.0	8
ST*	G	1/4	770 291 202	18.0	8
ST*	B	3/8	770 291 103	20.0	10
ST*	G	3/8	770 291 203	20.0	10
.	B	1/2	770 291 104	24.0	11
.	G	1/2	770 291 204	24.0	11
.	B	3/4	770 291 105	25.5	17
.	G	3/4	770 291 205	25.5	17
.	B	1	770 291 106	33.0	19
.	G	1	770 291 206	33.0	19
.	B	1 1/4	770 291 107	36.0	22
.	G	1 1/4	770 291 207	36.0	22
.	B	1 1/2	770 291 108	37.0	22
.	G	2 1/2	770 291 208	37.0	22
.	B	2	770 291 109	44.0	27
.	G	2	770 291 209	44.0	27
.	B	2 1/2	770 291 110	52.0	32
.	G	2 1/2	770 291 210	52.0	32
.	B	3	770 291 111	59.0	36
.	G	3	770 291 211	59.0	36
.	B	4	770 291 112	66.0	41
.	G	4	770 291 212	66.0	41

291a Plug, plain, solid



EN		Dim. [inch]	Code	b [mm]	s [mm]
-	B	3/4	770 292 105	28	17
-	G	3/4	770 292 205	28	17
-	B	1	770 292 106	33	19
-	G	1	770 292 206	33	19
-	B	1 1/4	770 292 107	36	22
-	G	1 1/4	770 292 207	36	22
-	B	1 1/2	770 292 108	38	23
-	G	1 1/2	770 292 208	38	23
-	B	2	770 292 109	44	27
-	G	2	770 292 209	44	27

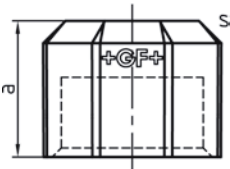
294 Plug, with hole in square head



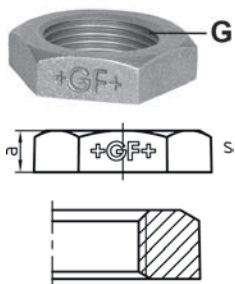
EN		Dim. [inch]	Code	c [mm]	s [mm]	d [mm]	
-	B	½	770 294 104	32	11	4	
-	G	½	770 294 204	32	11	4	
-	B	¾	770 294 105	37	17	4	
-	G	¾	770 294 205	37	17	4	
-	B	1	770 294 106	41	19	5	
-	G	1	770 294 206	41	19	5	
-	B	1 ¼	770 294 107	47	22	5	
-	G	1 ¼	770 294 207	47	22	5	
-	B	1 ½	770 294 108	47	22	5	
-	G	1 ½	770 294 208	47	22	5	
-	B	2	770 294 109	53	27	5	
-	G	2	770 294 209	53	27	5	

300 Cap, ISO/EN T1

ST ... these types of fittings are made from steel (galvanised finish = electroplated) and not suitable for drinking water installations.



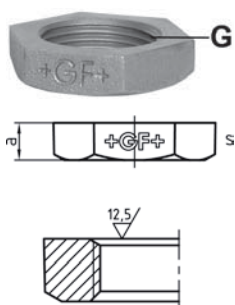
EN		Dim. [inch]	Code	a [mm]	s [mm]		
ST.	B	⅛	770 300 101	14	14	hexagon	
ST.	G	⅛	770 300 201	14	14	hexagon	
ST.	B	¼	770 300 102	17	17	hexagon	
ST.	G	¼	770 300 202	17	17	hexagon	
ST.	B	⅜	770 300 103	18	22	hexagon	
ST.	G	⅜	770 300 203	18	22	hexagon	
•	B	½	770 300 104	24	26	hexagon	
•	G	½	770 300 204	24	26	hexagon	
•	B	¾	770 300 105	26	32	hexagon	
•	G	¾	770 300 205	26	32	hexagon	
•	B	1	770 300 106	29	38	octagon	
•	G	1	770 300 206	29	38	octagon	
•	B	1 ¼	770 300 107	36	47	octagon	
•	G	1 ¼	770 300 207	36	47	octagon	
•	B	1 ½	770 300 108	36	53	octagon	
•	G	1 ½	770 300 208	36	53	octagon	
•	B	2	770 300 109	37	68	octagon	
•	G	2	770 300 209	37	68	octagon	
•	B	2 ½	770 300 110	41	86	octagon	
•	G	2 ½	770 300 210	41	86	octagon	
•	B	3	770 300 111	50	96	octagon	
•	G	3	770 300 211	50	96	octagon	
•	B	4	770 300 112	52	128	octagon	
•	G	4	770 300 212	52	128	octagon	



310 Backnut, ISO/EN P4

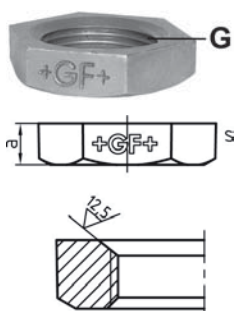
ST ... these types of fittings are made from steel (galvanised finish = electroplated).

EN		G...B [inch]	Code	a [mm]	s [mm]
ST.	B	1/8	770 310 101	7.0	19
ST.	G	1/8	770 310 201	7.0	19
ST.	B	1/4	770 310 102	7.5	22
ST.	G	1/4	770 310 202	7.5	22
ST.	B	3/8	770 310 103	8.0	27
ST.	G	3/8	770 310 203	8.0	27
•	B	1/2	770 310 104	9.0	32
•	G	1/2	770 310 204	9.0	32
•	B	3/4	770 310 105	10.0	36
•	G	3/4	770 310 205	10.0	36
•	B	1	770 310 106	11.5	46
•	G	1	770 310 206	11.5	46
•	B	1 1/4	770 310 107	13.0	56
•	G	1 1/4	770 310 207	13.0	56
•	B	1 1/2	770 310 108	14.0	60
•	G	1 1/2	770 310 208	14.0	60
•	B	2	770 310 109	16.0	73
•	G	2	770 310 209	16.0	73
•	B	2 1/2	770 310 110	19.0	95
•	G	2 1/2	770 310 210	19.0	95
•	B	3	770 310 111	22.0	105
•	G	3	770 310 211	22.0	105



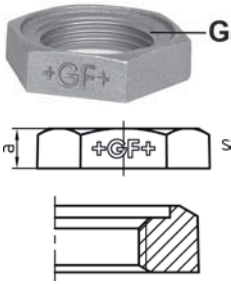
310a Backnut, with one machined face, ISO/EN P4

EN		G...B [inch]	Code	a [mm]	s [mm]
•	B	1/2	770 309 104	8.5	32
•	G	1/2	770 309 204	8.5	32
•	B	3/4	770 309 105	9.5	36
•	G	3/4	770 309 205	9.5	36
•	B	1	770 309 106	11.5	46
•	G	1	770 309 206	11.5	46
•	B	1 1/4	770 309 107	12.5	56
•	G	1 1/4	770 309 207	12.5	56
•	B	1 1/2	770 309 108	13.5	60
•	G	1 1/2	770 309 208	13.5	60
•	B	2	770 309 109	15.5	73
•	G	2	770 309 209	15.5	73



310b Backnut, strongly faced on one end, ISO/EN P4

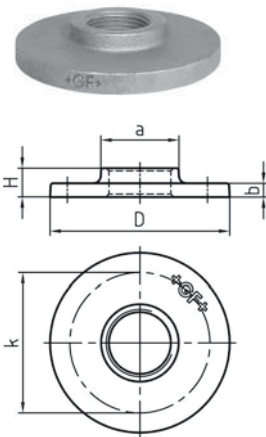
EN		G...B [inch]	Code	a [mm]	s [mm]
•	G	1/2	770 308 204	9.0	32
•	G	3/4	770 308 205	10.0	36
•	G	1	770 308 206	11.5	46
•	G	1 1/4	770 308 207	13.0	56
•	G	1 1/2	770 308 208	14.0	60
•	G	2	770 308 209	16.0	73



312 Backnut, recessed, ISO/EN P4

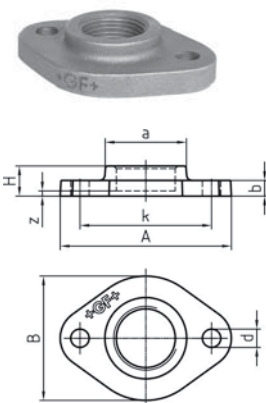
ST ... these types of fittings are made from steel (galvanised finish = electroplated).

EN		G...B [inch]	Code	a [mm]	s [mm]
ST.	B	¼	770 312 102	7.5	22
ST.	G	¼	770 312 202	7.5	22
ST.	B	⅜	770 312 103	8.0	27
ST.	G	⅜	770 312 203	8.0	27
•	B	½	770 312 104	9.0	32
•	G	½	770 312 204	9.0	32
•	B	¾	770 312 105	10.0	37
•	G	¾	770 312 205	10.0	37
•	B	1	770 312 106	12.0	46
•	G	1	770 312 206	12.0	46
•	B	1 ¼	770 312 107	13.0	55
•	G	1 ¼	770 312 207	13.0	55
•	B	1 ½	770 312 108	14.0	60
•	G	1 ½	770 312 208	14.0	60
•	B	2	770 312 109	16.0	73
•	G	2	770 312 209	16.0	73



321 Screwed flange, undrilled

EN		Dim. [inch]	PN	Code	a [mm]	b [mm]	k [mm]	H [mm]	D [mm]
-	B	½	PN 1	770 320 104	28	5	55	13	80
-	G	½	PN 1	770 320 204	28	5	55	13	80
-	B	¾	PN 1	770 320 105	38	6	65	14	90
-	G	¾	PN 1	770 320 205	38	6	65	14	90
-	B	1	PN 1	770 320 106	47	9	75	17	100
-	G	1	PN 1	770 320 206	47	9	75	17	100
-	B	1 ¼	PN 1	770 320 107	51	10	90	21	120
-	G	1 ¼	PN 1	770 320 207	51	10	90	21	120
-	B	1 ½	PN 1	770 320 108	56	10	100	21	130
-	G	1 ½	PN 1	770 320 208	56	10	100	21	130
-	B	2	PN 1	770 320 109	68	11	110	22	140
-	G	2	PN 1	770 320 209	68	11	110	22	140



326 Screwed flange, drilled, 2 holes

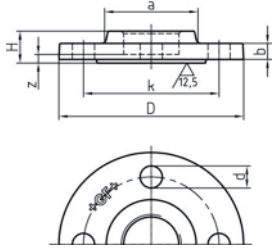
EN		Dim. [inch]	PN	Code	a [mm]	b [mm]	d [mm]	k [mm]	z [mm]	A [mm]	B [mm]	H [mm]
-	B	½	PN 10	770 326 104	32	11	11.5	55	4	80	45	17
-	G	½	PN 10	770 326 204	32	11	11.5	55	4	80	45	17
-	B	¾	PN 10	770 326 105	38	11	11.5	65	4	90	64	19
-	G	¾	PN 10	770 326 205	38	11	11.5	65	4	90	64	19
-	B	1	PN 10	770 326 106	46	11	11.5	75	3	100	72	20
-	G	1	PN 10	770 326 206	46	11	11.5	75	3	100	72	20
-	B	1 ¼	PN 10	770 326 107	56	12	14.0	90	3	120	85	22
-	G	1 ¼	PN 10	770 326 207	56	12	14.0	90	3	120	85	22
-	B	1 ½	PN 10	770 326 108	63	13	14.0	100	4	130	95	23
-	G	1 ½	PN 10	770 326 208	63	13	14.0	100	4	130	95	23
-	B	2	PN 10	770 326 109	77	13	14.0	110	0	140	100	24
-	G	2	PN 10	770 326 209	77	13	14.0	110	0	140	100	24



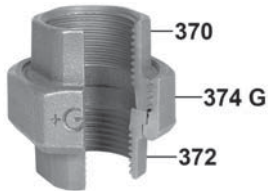
329 Screwed flange, drilled, 4 holes

Diameter of pitch circle and sealing face compatible to EN 1092-2 and DIN 2566.

* 8 holes



EN		Dim. [inch]	PN	Code	a [mm]	b [mm]	d [mm]	k [mm]	z [mm]	H [mm]	D [mm]
-	B	1/2	PN 16	770 329 104	35	14	14	65	7	20	95
-	G	1/2	PN 16	770 329 204	35	14	14	65	7	20	95
-	B	3/4	PN 16	770 329 105	45	16	14	75	9	24	105
-	G	3/4	PN 16	770 329 205	45	16	14	75	9	24	105
-	B	1	PN 16	770 329 106	52	17	14	85	7	24	115
-	G	1	PN 16	770 329 206	52	17	14	85	7	24	115
-	B	1 1/4	PN 16	770 329 107	60	17	18	100	7	26	140
-	G	1 1/4	PN 16	770 329 207	60	17	18	100	7	26	140
-	B	1 1/2	PN 16	770 329 108	72	13	18	110	8	26	150
-	G	1 1/2	PN 16	770 329 208	72	13	18	110	8	26	150
-	B	2	PN 16	770 329 109	87	16	18	125	5	29	165
-	G	2	PN 16	770 329 209	87	16	18	125	5	29	165
-	B	2 1/2	PN 16	770 329 110	100	16	18	145	5	32	185
-	G	2 1/2	PN 16	770 329 210	100	16	18	145	5	32	185
-	B	3	PN 10	770 329 111	115	18	18	160	6	36	200
-	G	3	PN 10	770 329 211	115	18	18	160	6	36	200
*-	B	3	PN 16	770 329 115	115	18	18	160	6	36	200
*-	G	3	PN 16	770 329 215	115	18	18	160	6	36	200
*-	B	4	PN 16	770 329 112	140	20	18	180	2	38	220
*-	G	4	PN 16	770 329 212	140	20	18	180	2	38	220

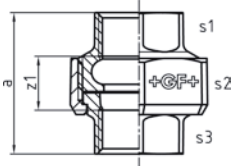


330 Union flat seat, ISO/EN U1

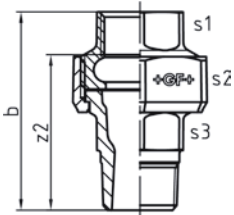
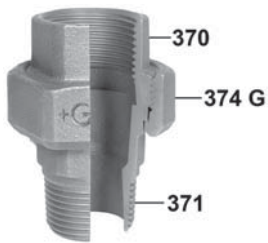
Dim. 1/2 to 2 only are supplied with sealing gaskets; a and z1 include the seal thickness as per table "Sealing Gasket Dimension".

374 G ... refers to the thread size G according to ISO 228 of the union nut 374.

* Inside hexagon



EN		Dim. [inch]	374 G [inch]	Code	a [mm]	z1 [mm]	s1 [mm]	s2 [mm]	s3 [mm]
•	B	1/4	5/8	770 330 102	42	22	19	28	*10
•	G	1/4	5/8	770 330 202	42	22	19	28	*10
•	B	3/8	3/4	770 330 103	47	27	22	32	*12
•	G	3/8	3/4	770 330 203	47	27	22	32	*12
•	B	1/2	1	770 330 104	48	22	26	41	26
•	G	1/2	1	770 330 204	48	22	26	41	26
•	B	3/4	1 1/4	770 330 105	52	22	31	48	31
•	G	3/4	1 1/4	770 330 205	52	22	31	48	31
•	B	1	1 1/2	770 330 106	59	25	38	55	38
•	G	1	1 1/2	770 330 206	59	25	38	55	38
•	B	1 1/4	2	770 330 107	65	27	48	67	48
•	G	1 1/4	2	770 330 207	65	27	48	67	48
•	B	1 1/2	2 1/4	770 330 108	70	32	54	74	54
•	G	1 1/2	2 1/4	770 330 208	70	32	54	74	54
•	B	2	2 3/4	770 330 109	80	32	66	90	67
•	G	2	2 3/4	770 330 209	80	32	66	90	67
•	B	2 1/2	3 1/2	770 330 110	85	31	85	111	85
•	G	2 1/2	3 1/2	770 330 210	85	31	85	111	85
•	B	3	4	770 330 111	96	36	96	130	96
•	G	3	4	770 330 211	96	36	96	130	96
-	B	4	5	770 330 112	111	39	120	151	122
-	G	4	5	770 330 212	111	39	120	151	122

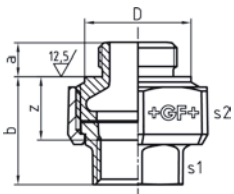
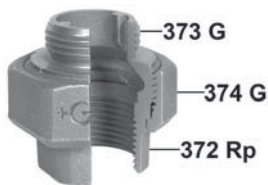


331 Union flat seat, ISO/EN U2

Supplied without sealing gaskets; b and z2 include the seal thickness as per table "Sealing Gasket Dimension".

374 G ... refers to the thread size G according to ISO 228 of the union nut 374.

EN		Dim. [inch]	374 G [inch]	Code	b [mm]	z2 [mm]	s1 [mm]	s2 [mm]	s3 [mm]
•	B	1/4	5/8	770 331 102	55	45	19	28	15
•	G	1/4	5/8	770 331 202	55	45	19	28	15
•	B	3/8	3/4	770 331 103	58	48	22	32	19
•	G	3/8	3/4	770 331 203	58	48	22	32	19
•	B	1/2	1	770 331 104	66	53	26	41	23
•	G	1/2	1	770 331 204	66	53	26	41	23
•	B	3/4	1 1/4	770 331 105	72	57	31	48	30
•	G	3/4	1 1/4	770 331 205	72	57	31	48	30
•	B	1	1 1/2	770 331 106	80	63	38	55	36
•	G	1	1 1/2	770 331 206	80	63	38	55	36
•	B	1 1/4	2	770 331 107	90	71	48	67	48
•	G	1 1/4	2	770 331 207	90	71	48	67	48
•	B	1 1/2	2 1/4	770 331 108	95	76	54	74	54
•	G	1 1/2	2 1/4	770 331 208	95	76	54	74	54
•	B	2	2 3/4	770 331 109	107	83	66	90	66
•	G	2	2 3/4	770 331 209	107	83	66	90	66
-	B	2 1/2	3 1/2	770 331 110	118	91	85	111	85
-	G	2 1/2	3 1/2	770 331 210	118	91	85	111	85
-	B	3	4	770 331 111	131	101	96	130	95
-	G	3	4	770 331 211	131	101	96	130	95

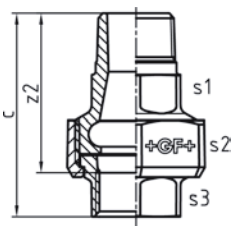
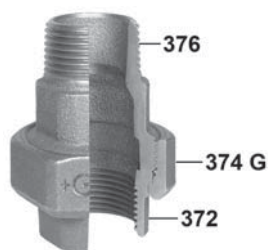


332 Union flat seat

Supplied without sealing gaskets; b and z include the seal thickness as per table "Sealing Gasket Dimension".

374 G ... refers to the thread size G according to ISO 228 of the union nut 374.

EN		Dim. Rp/G [inch]	374 G [inch]	Code	a [mm]	b [mm]	z [mm]	s1 [mm]	s2 [mm]	D [mm]
-	B	3/4	1 1/4	770 332 105	12	39	24	31	48	36
-	G	3/4	1 1/4	770 332 205	12	39	24	31	48	36
-	B	1	1 1/2	770 332 106	14	42	25	38	55	43
-	G	1	1 1/2	770 332 206	14	42	25	38	55	43
-	B	1 1/4	2	770 332 107	16	50	31	48	67	53
-	G	1 1/4	2	770 332 207	16	50	31	48	67	53

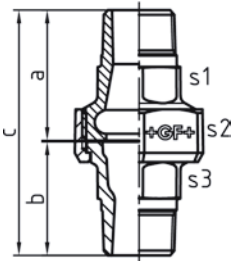


335 Union flat seat

Supplied without sealing gaskets; c includes the seal thickness as per table "Sealing Gasket Dimension".

374 G ... refers to the thread size G according to ISO 228 of the union nut 374.

EN		Dim. [inch]	374 G [inch]	Code	c [mm]	z2 [mm]	s1 [mm]	s2 [mm]	s3 [mm]
-	B	1/2	1	770 335 104	66	53	26	41	26
-	G	1/2	1	770 335 204	66	53	26	41	26
-	B	3/4	1 1/4	770 335 105	72	57	32	48	31
-	G	3/4	1 1/4	770 335 205	72	57	32	48	31
-	B	1	1 1/2	770 335 106	82	65	38	55	38
-	G	1	1 1/2	770 335 206	82	65	38	55	38
-	B	1 1/4	2	770 335 107	90	71	48	67	48
-	G	1 1/4	2	770 335 207	90	71	48	67	48
-	B	1 1/2	2 1/4	770 335 108	95	76	54	74	54
-	G	1 1/2	2 1/4	770 335 208	95	76	54	74	54

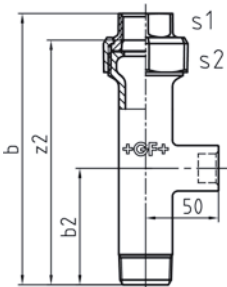
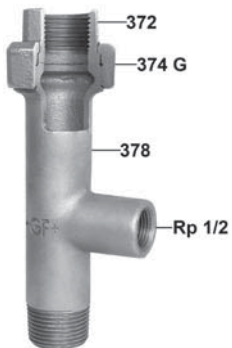


336 Union flat seat

Supplied without sealing gaskets; c includes the seal thickness as per table "Sealing Gasket Dimension".

374 G ... refers to the thread size G according to ISO 228 of the union nut 374.

EN		Dim. [inch]	374 G [inch]	Code	a [mm]	b [mm]	c [mm]	s1 [mm]	s2 [mm]	s3 [mm]
-	B	1/2	1	770 336 104	43	40	85	26	41	23
-	G	1/2	1	770 336 204	43	40	85	26	41	23
-	B	3/4	1 1/4	770 336 105	48	42	92	32	48	30
-	G	3/4	1 1/4	770 336 205	48	42	92	32	48	30
-	B	1	1 1/2	770 336 106	54	47	103	38	55	36
-	G	1	1 1/2	770 336 206	54	47	103	38	55	36
-	B	1 1/4	2	770 336 107	57	55	114	48	67	48
-	G	1 1/4	2	770 336 207	57	55	114	48	67	48
-	B	1 1/2	2 1/4	770 336 108	61	57	120	54	74	54
-	G	1 1/2	2 1/4	770 336 208	61	57	120	54	74	54

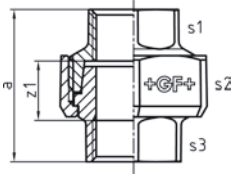
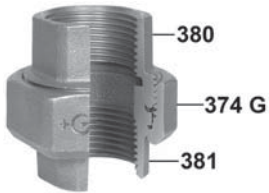


338 Distribution union flat seat

Supplied without sealing gaskets; b includes the seal thickness as per table "Sealing Gasket Dimension".

374 G ... refers to the thread size G according to ISO 228 of the union nut 374.

EN		Dim. [inch]	374 G [inch]	Code	b [mm]	b2 [mm]	z2 [mm]	s1 [mm]	s2 [mm]
-	G	3/4	1 1/4	770 338 220	177	74	160	31	48
-	G	1	1 1/2	770 338 221	174	67	155	38	55
-	G	1 1/4	2	770 338 222	174	59	153	48	67



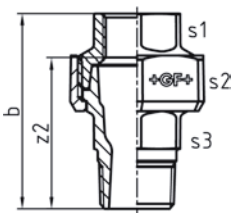
340 Union taper seat, ISO/EN U11

Torque and notes for installation please find in "Technical Product Notes".
374 G ... refers to the thread size G according to ISO 228 of the union nut 374.

* Inside hexagon

** Version

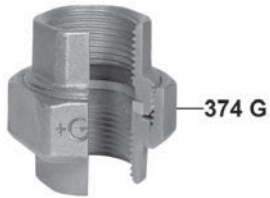
EN		Dim. [inch]	**	374 G [inch]	Code	a [mm]	z1 [mm]	s1 [mm]	s2 [mm]	s3 [mm]
•	B	1/8		1/2	770 340 101	38	24	15	26	15
•	G	1/8		1/2	770 340 201	38	24	15	26	15
•	B	1/4		5/8	770 340 102	42	22	19	28	*10
•	G	1/4		5/8	770 340 202	42	22	19	28	*10
•	B	3/8		3/4	770 340 103	48	28	22	32	*12
•	G	3/8		3/4	770 340 203	48	28	22	32	*12
•	B	1/2		1	770 340 104	48	22	26	41	25
•	G	1/2		1	770 340 204	48	22	26	41	25
•	B	1/2	s	1 1/8	770 340 120	48	22	26	44	26
•	G	1/2	s	1 1/8	770 340 220	48	22	26	44	26
•	B	3/4		1 1/4	770 340 105	52	22	31	48	32
•	G	3/4		1 1/4	770 340 205	52	22	31	48	32
•	B	1		1 1/2	770 340 106	58	24	38	55	38
•	G	1		1 1/2	770 340 206	58	24	38	55	38
•	B	1 1/4		2	770 340 107	65	27	48	67	48
•	G	1 1/4		2	770 340 207	65	27	48	67	48
•	B	1 1/2		2 1/4	770 340 108	70	32	54	74	54
•	G	1 1/2		2 1/4	770 340 208	70	32	54	74	54
•	B	2		2 3/4	770 340 109	78	30	66	90	66
•	G	2		2 3/4	770 340 209	78	30	66	90	66
•	B	2 1/2		3 1/2	770 340 110	90	36	85	111	85
•	G	2 1/2		3 1/2	770 340 210	90	36	85	111	85
•	B	3		4	770 340 111	101	41	96	130	96
•	G	3		4	770 340 211	101	41	96	130	96
•	B	4		5	770 340 112	114	42	120	151	120
•	G	4		5	770 340 212	114	42	120	151	120



341 Union taper seat, ISO/EN U12

Torque and notes for installation please find in "Technical Product Notes".
374 G ... refers to the thread size G according to ISO 228 of the union nut 374.

EN		Dim. [inch]	374 G [inch]	Code	b [mm]	z2 [mm]	s1 [mm]	s2 [mm]	s3 [mm]
•	B	1/4	5/8	770 341 102	55	45	19	28	15
•	G	1/4	5/8	770 341 202	55	45	19	28	15
•	B	3/8	3/4	770 341 103	59	49	22	32	20
•	G	3/8	3/4	770 341 203	59	49	22	32	20
•	B	1/2	1	770 341 104	66	53	26	41	23
•	G	1/2	1	770 341 204	66	53	26	41	23
•	B	3/4	1 1/4	770 341 105	72	57	31	48	30
•	G	3/4	1 1/4	770 341 205	72	57	31	48	30
•	B	1	1 1/2	770 341 106	80	63	38	55	36
•	G	1	1 1/2	770 341 206	80	63	38	55	36
•	B	1 1/4	2	770 341 107	90	71	48	67	48
•	G	1 1/4	2	770 341 207	90	71	48	67	48
•	B	1 1/2	2 1/4	770 341 108	96	77	54	74	54
•	G	1 1/2	2 1/4	770 341 208	96	77	54	74	54
•	B	2	2 3/4	770 341 109	106	82	66	90	66
•	G	2	2 3/4	770 341 209	106	82	66	90	66
•	B	2 1/2	3 1/2	770 341 110	122	95	85	111	85
•	G	2 1/2	3 1/2	770 341 210	122	95	85	111	85
•	B	3	4	770 341 111	134	104	96	130	95
•	G	3	4	770 341 211	134	104	96	130	95
-	B	4	5	770 341 112	153	117	120	151	120
-	G	4	5	770 341 212	153	117	120	151	120



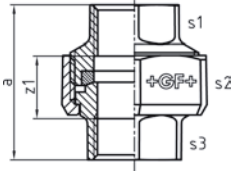
342

Union, spherical seat/taper seat Bronze to Iron, ISO/EN U11

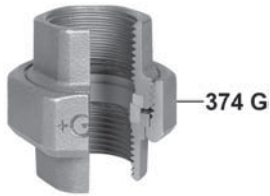
Torque and notes for installation please find in "Technical Product Notes".

Not suitable for drinking water installation!

374 G ... refers to the thread size G according to ISO 228 of the union nut 374.



EN		Dim. [inch]	374 G [inch]	Code	a [mm]	z1 [mm]	s1 [mm]	s2 [mm]	s3 [mm]
•	B	1/2	1 1/8	770 342 104	48	22	26	44	26
•	G	1/2	1 1/8	770 342 204	48	22	26	44	26
•	B	3/4	1 1/4	770 342 105	52	23	31	48	31
•	G	3/4	1 1/4	770 342 205	52	23	31	48	31
•	B	1	1 1/2	770 342 106	58	24	38	55	38
•	G	1	1 1/2	770 342 206	58	24	38	55	38
•	B	1 1/4	2	770 342 107	65	27	48	67	48
•	G	1 1/4	2	770 342 207	65	27	48	67	48
•	B	1 1/2	2 1/4	770 342 108	70	32	54	73	54
•	G	1 1/2	2 1/4	770 342 208	70	32	54	73	54
•	B	2	2 3/4	770 342 109	78	32	66	90	66
•	G	2	2 3/4	770 342 209	78	32	66	90	66



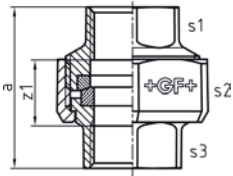
342a

Union, spherical seat/taper seat Bronze to Bronze, ISO/EN U11

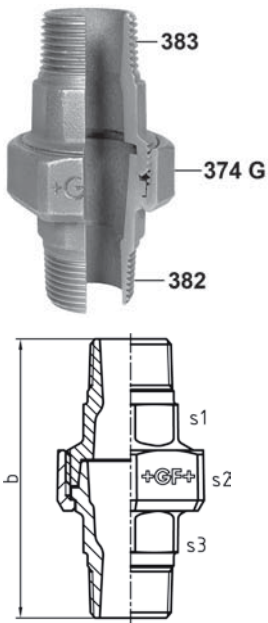
Torque and notes for installation please find in "Technical Product Notes".

Not suitable for drinking water installation!

374 G ... refers to the thread size G according to ISO 228 of the union nut 374.



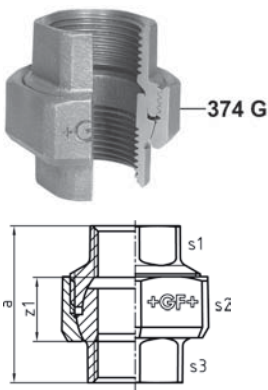
EN		Dim. [inch]	374 G [inch]	Code	a [mm]	z1 [mm]	s1 [mm]	s2 [mm]	s3 [mm]
•	B	1/2	1 1/8	770 345 104	48	22	26	44	26
•	G	1/2	1 1/8	770 345 204	48	22	26	44	26
•	B	3/4	1 1/4	770 345 105	52	23	31	48	31
•	G	3/4	1 1/4	770 345 205	52	23	31	48	31
•	B	1	1 1/2	770 345 106	58	24	38	55	38
•	G	1	1 1/2	770 345 206	58	24	38	55	38
•	B	1 1/4	2	770 345 107	65	27	48	67	48
•	G	1 1/4	2	770 345 207	65	27	48	67	48
•	B	1 1/2	2 1/4	770 345 108	75	32	54	73	54
•	G	1 1/2	2 1/4	770 345 208	75	32	54	73	54
•	B	2	2 3/4	770 345 109	85	32	66	90	66
•	G	2	2 3/4	770 345 209	85	32	66	90	66



344 Union taper seat

Torque and notes for installation please find in "Technical Product Notes".
374 G ... refers to the thread size G according to ISO 228 of the union nut 374.

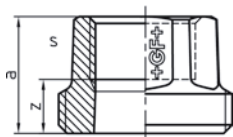
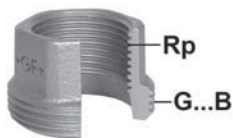
EN		Dim. [inch]	374 G [inch]	Code	b [mm]	s1 [mm]	s2 [mm]	s3 [mm]
-	B	1/4	5/8	770 344 102	69	18	28	15
-	G	1/4	5/8	770 344 202	69	18	28	15
-	B	3/8	3/4	770 344 103	75	22	32	20
-	G	3/8	3/4	770 344 203	75	22	32	20
-	B	1/2	1	770 344 104	85	26	39	23
-	G	1/2	1	770 344 204	85	26	39	23
-	B	3/4	1 1/4	770 344 105	93	32	48	30
-	G	3/4	1 1/4	770 344 205	93	32	48	30
-	B	1	1 1/2	770 344 106	103	38	55	36
-	G	1	1 1/2	770 344 206	103	38	55	36
-	B	1 1/4	2	770 344 107	114	48	67	48
-	G	1 1/4	2	770 344 207	114	48	67	48
-	B	1 1/2	2 1/4	770 344 108	123	54	74	54
-	G	1 1/2	2 1/4	770 344 208	123	54	74	54
-	B	2	2 3/4	770 344 109	136	66	90	67
-	G	2	2 3/4	770 344 209	136	66	90	67



346 Union, spherical seat angular deviation max. 6°, ISO/EN U11

Torque and notes for installation please find in "Technical Product Notes".
374 G ... refers to the thread size G according to ISO 228 of the union nut 374.

EN		Dim. [inch]	374 G [inch]	Code	a [mm]	z1 [mm]	s1 [mm]	s2 [mm]	s3 [mm]
•	B	1/2	1 1/8	770 346 104	48	22	26	44	26
•	G	1/2	1 1/8	770 346 204	48	22	26	44	26
•	B	3/4	1 1/4	770 346 105	52	23	31	48	31
•	G	3/4	1 1/4	770 346 205	52	23	31	48	31
•	B	1	1 1/2	770 346 106	58	24	38	55	38
•	G	1	1 1/2	770 346 206	58	24	38	55	38
•	B	1 1/4	2	770 346 107	65	27	48	67	48
•	G	1 1/4	2	770 346 207	65	27	48	67	48
•	B	1 1/2	2 1/4	770 346 108	75	32	54	73	54
•	G	1 1/2	2 1/4	770 346 208	75	32	54	73	54
•	B	2	2 3/4	770 346 109	85	32	66	90	66
•	G	2	2 3/4	770 346 209	85	32	66	90	66

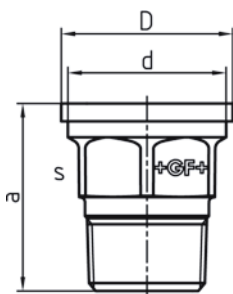
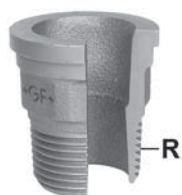


370 Union bush flat seat

* Is usually not supplied as a separate piece.

** Version

EN		Dim. Rp [inch]	**	G...B [inch]	Code	a [mm]	z [mm]	s [mm]	
*-	B	1/4		5/8	-	21	11	19	hexagon
*-	G	1/4		5/8	-	21	11	19	hexagon
*-	B	3/8		3/4	-	23	13	22	hexagon
*-	G	3/8		3/4	-	23	13	22	hexagon
-	B	1/2		1	770 370 119	25	12	26	hexagon
-	G	1/2		1	770 370 219	25	12	26	hexagon
-	B	1/2	s	1 1/8	770 370 120	25	12	26	hexagon
-	G	1/2	s	1 1/8	770 370 220	25	12	26	hexagon
-	B	3/4		1 1/4	770 370 105	28	13	32	hexagon
-	G	3/4		1 1/4	770 370 205	28	13	32	hexagon
-	B	1		1 1/2	770 370 106	31	14	38	hexagon
-	G	1		1 1/2	770 370 206	31	14	38	hexagon
-	B	1 1/4		2	770 370 107	33	14	48	hexagon
-	G	1 1/4		2	770 370 207	33	14	48	hexagon
-	B	1 1/2		2 1/4	770 370 108	36	17	54	hexagon
-	G	1 1/2		2 1/4	770 370 208	36	17	54	hexagon
-	B	2		2 3/4	770 370 109	42	18	66	hexagon
-	G	2		2 3/4	770 370 209	42	18	66	hexagon
-	B	2 1/2		3 1/2	770 370 110	41	14	85	octagon
-	G	2 1/2		3 1/2	770 370 210	41	14	85	octagon
-	B	3		4	770 370 111	48	18	96	octagon
-	G	3		4	770 370 211	48	18	96	octagon
*-	B	4		5	-	62	26	122	octagon
*-	G	4		5	-	62	26	122	octagon

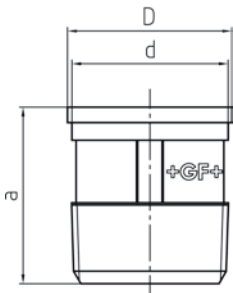


371 Union end flat seat, equal

G ... refers to the thread size G of the union nut 374, which can be combined with the union end.

* Is usually not supplied as a separate piece.

EN		Dim. R [inch]	G [inch]	Code	a [mm]	d [mm]	s [mm]	
*-	B	1/4	5/8	-	32	18.1	15	hexagon
*-	G	1/4	5/8	-	32	18.1	15	hexagon
*-	B	3/8	3/4	-	34	21.6	19	octagon
*-	G	3/8	3/4	-	34	21.6	19	octagon
-	B	1/2	1	770 371 104	40	27.0	23	hexagon
-	G	1/2	1	770 371 204	40	27.0	23	hexagon
-	B	3/4	1 1/4	770 371 105	42	35.5	30	hexagon
-	G	3/4	1 1/4	770 371 205	42	35.5	30	hexagon
-	B	1	1 1/2	770 371 106	47	40.9	36	hexagon
-	G	1	1 1/2	770 371 206	47	40.9	36	hexagon
-	B	1 1/4	2	770 371 107	57	52.4	48	hexagon
-	G	1 1/4	2	770 371 207	57	52.4	48	hexagon
-	B	1 1/2	2 1/4	770 371 108	57	58.4	54	hexagon
-	G	1 1/2	2 1/4	770 371 208	57	58.4	54	hexagon
-	B	2	2 3/4	770 371 109	62	73.4	66	hexagon
-	G	2	2 3/4	770 371 209	62	73.4	66	hexagon
-	B	2 1/2	3 1/2	770 371 110	75	91.9	85	octagon
-	G	2 1/2	3 1/2	770 371 210	75	91.9	85	octagon
-	B	3	4	770 371 111	80	104.4	95	octagon
-	G	3	4	770 371 211	80	104.4	95	octagon



371

Union end flat seat, reducing

Union end for 374 1 d=42.5

G ... refers to the thread size G of the union nut 374, which can be combined with the union end.

EN		Dim. R [inch]	G [inch]	Code	a [mm]	d [mm]		
-	B	1 - 1 ¼	1 ½	770 371 115	47	42.2	round	



372

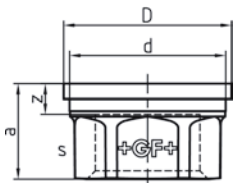
Union end flat seat, equal

G ... refers to the thread size G of the union nut 374, which can be combined with the union end.

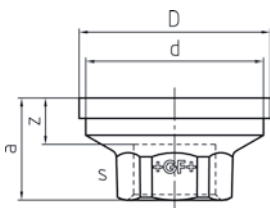
* Is usually not supplied as a separate piece.

** Version

l hex = Internal hexagon



EN		Dim. Rp [inch]	**	G [inch]	Code	a [mm]	d [mm]	z [mm]	s [mm]	
*-	B	¼		5/8	-	20.0	18.1	10.0	10	l hex
*-	G	¼		5/8	-	20.0	18.1	10.0	10	l hex
*-	B	3/8		3/4	-	22.0	21.6	12.0	12	l hex
*-	G	3/8		3/4	-	22.0	21.6	12.0	12	l hex
-	B	½		1	770 372 119	22.0	27.1	9.0	25	hexagon
-	G	½		1	770 372 219	22.0	27.1	9.0	25	hexagon
-	B	½	s	1 1/8	770 372 104	22.0	31.5	9.0	26	hexagon
-	G	½	s	1 1/8	770 372 204	22.0	31.5	9.0	26	hexagon
-	B	¾		1 ¼	770 372 105	22.0	35.5	7.0	31	hexagon
-	G	¾		1 ¼	770 372 205	22.0	35.5	7.0	31	hexagon
-	B	1		1 ½	770 372 106	26.0	40.9	9.0	38	hexagon
-	G	1		1 ½	770 372 206	26.0	40.9	9.0	38	hexagon
-	B	1 ¼		2	770 372 107	31.0	52.4	12.0	48	hexagon
-	G	1 ¼		2	770 372 207	31.0	52.4	12.0	48	hexagon
-	B	1 ½		2 ¼	770 372 108	32.5	58.4	13.5	54	hexagon
-	G	1 ½		2 ¼	770 372 208	32.5	58.4	13.5	54	hexagon
-	B	2		2 ¾	770 372 109	35.0	73.4	11.0	67	hexagon
-	G	2		2 ¾	770 372 209	35.0	73.4	11.0	67	hexagon
-	B	2 ½		3 ½	770 372 110	39.0	91.9	12.0	85	octagon
-	G	2 ½		3 ½	770 372 210	39.0	91.9	12.0	85	octagon
-	B	3		4	770 372 111	45.0	104.4	15.0	96	octagon
-	G	3		4	770 372 211	45.0	104.4	15.0	96	octagon
*-	B	4		5	-	46.0	128.7	12.0	122	octagon
*-	G	4		5	-	46.0	128.7	12.0	122	octagon

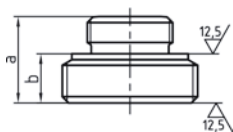
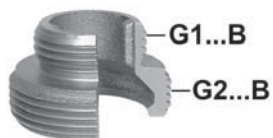


372

Union end flat seat, reducing

G ... refers to the thread size G of the union nut 374, which can be combined with the union end.

EN		Dim. Rp [inch]	G [inch]	Code	a [mm]	d [mm]	z [mm]	s [mm]	
-	B	1 - ¾	1 ½	770 372 115	25.0	41.0	10.0	32	hexagon
-	G	1 - ¾	1 ½	770 372 215	25.0	41.0	10.0	32	hexagon
-	B	1 ¼ - ¾	2	770 372 133	30.0	52.5	15.0	32	hexagon
-	G	1 ¼ - ¾	2	770 372 233	30.0	52.5	15.0	32	hexagon
-	B	1 ¼ - 1	2	770 372 116	30.5	52.5	13.5	38	hexagon
-	G	1 ¼ - 1	2	770 372 216	30.5	52.5	13.5	38	hexagon

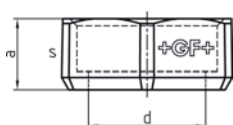


373 Union bush flat seat

Sealing gaskets for sealing surface as per table "Sealing Gasket Dimension" (catalogue no. 332, symbol ◯).

* Is usually not supplied as a separate piece.

EN		G1...B [inch]	G2...B [inch]	Code	a [mm]	b [mm]	
*-	G	1/2	1	-	23	13	
-	B	3/4	1 1/4	770 373 105	27	15	
-	G	3/4	1 1/4	770 373 205	27	15	
-	B	1	1 1/2	770 373 106	29	15	
-	G	1	1 1/2	770 373 206	29	15	
-	B	1 1/4	2	770 373 107	33	17	
-	G	1 1/4	2	770 373 207	33	17	



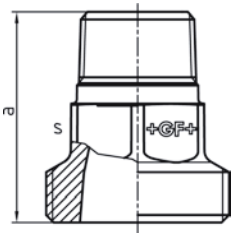
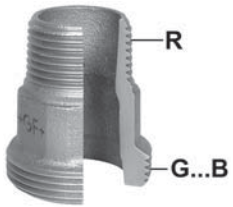
374 Union nut

* Is usually not supplied as a separate piece.

** Version

*** Union nut for 371 1 - 1 1/4

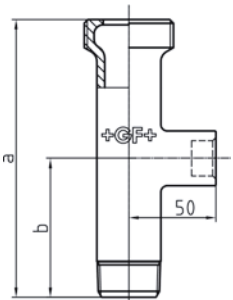
EN		Dim. [inch]	**	Dim. G [inch]	Code	a [mm]	d [mm]	s [mm]	
*-	B	1/8		1/2	-	15	16.6	26	hexagon
*-	G	1/8		1/2	-	15	16.6	26	hexagon
*-	B	1/4	s	5/8	-	15	18.4	28	hexagon
*-	G	1/4	s	5/8	-	15	18.4	28	hexagon
*-	B	1/4		3/4	-	16	21.9	32	hexagon
*-	G	1/4		3/4	-	16	21.9	32	hexagon
-	B	3/8		3/4	770 374 116	16	21.9	32	hexagon
-	G	3/8		3/4	770 374 216	16	21.9	32	hexagon
-	B	3/8	s	7/8	770 374 118	17	24.9	36	hexagon
-	G	3/8	s	7/8	770 374 218	17	24.9	36	hexagon
-	B	1/2		1	770 374 119	18	27.3	41	hexagon
-	G	1/2		1	770 374 219	18	27.3	41	hexagon
-	B	1/2	s	1 1/8	770 374 120	19	31.8	44	hexagon
-	G	1/2	s	1 1/8	770 374 220	19	31.8	44	hexagon
-	B	3/4		1 1/4	770 374 105	20	35.8	48	hexagon
-	G	3/4		1 1/4	770 374 205	20	35.8	48	hexagon
-	B	3/4	34,4	1 1/4	770 374 135	20	34.4	48	hexagon
-	B	1	s	1 1/2	770 374 106	22	41.3	55	hexagon
-	G	1	s	1 1/2	770 374 206	22	41.3	55	hexagon
-	B	1		1 1/2	770 960 180	22	41.3	55	octagon
***	B	1	42,5	1 1/2	770 374 121	22	42.5	55	hexagon
-	B	1 1/4		2	770 374 107	24	52.8	67	hexagon
-	G	1 1/4		2	770 374 207	24	52.8	67	hexagon
-	B	1 1/2		2 1/4	770 374 108	25	58.8	74	hexagon
-	G	1 1/2		2 1/4	770 374 208	25	58.8	74	hexagon
-	B	2		2 3/4	770 374 109	27	73.8	90	hexagon
-	G	2		2 3/4	770 374 209	27	73.8	90	hexagon
-	B	2 1/2		3 1/2	770 374 110	30	92.3	111	octagon
-	G	2 1/2		3 1/2	770 374 210	30	92.3	111	octagon
-	B	3		4	770 374 111	31	104.8	131	octagon
-	G	3		4	770 374 211	31	104.8	131	octagon
*-	B	4		5	-	35	129.2	151	octagon
*-	G	4		5	-	35	129.2	151	octagon



376 Union bush flat seat

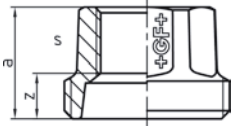
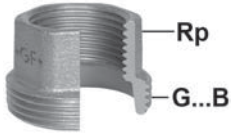
** Version

EN		Dim. R [inch]	**	G...B [inch]	Code	a [mm]	s [mm]	
-	B	1/2		1	770 376 105	43.0	26	hexagon
-	G	1/2		1	770 376 205	43.0	26	hexagon
-	B	1/2	s	1 1/8	770 376 125	41.5	26	hexagon
-	G	1/2	s	1 1/8	770 376 225	41.5	26	hexagon
-	B	3/4		1 1/4	770 376 106	48.0	32	hexagon
-	G	3/4		1 1/4	770 376 206	48.0	32	hexagon
-	B	1		1 1/2	770 376 107	54.0	38	hexagon
-	G	1		1 1/2	770 376 207	54.0	38	hexagon
-	B	1 1/4		2	770 376 108	57.0	48	hexagon
-	G	1 1/4		2	770 376 208	57.0	48	hexagon
-	B	1 1/2		2 1/4	770 376 109	61.0	54	hexagon
-	G	1 1/2		2 1/4	770 376 209	61.0	54	hexagon



378 Distribution union bush, flat seat

EN		Dim. R [inch]	G...B [inch]	Code	a [mm]	b [mm]
-	G	3/4	1 1/4	770 378 220	153	74
-	G	1	1 1/2	770 378 221	146	67
-	G	1 1/4	2	770 378 222	141	59

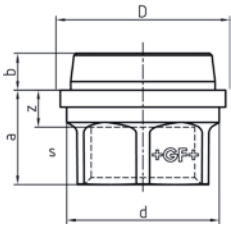
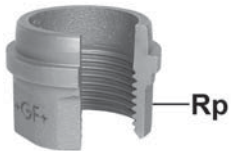


380 Union bush taper seat

Is usually not supplied as a separate piece.

** Version

EN		Dim. Rp [inch]	**	G...B [inch]	Code	a [mm]	z [mm]	s [mm]		
-	B	1/8		1/2	-	19	12	15	hexagon	
-	G	1/8		1/2	-	19	12	15	hexagon	
-	B	1/4		5/8	-	21	11	19	hexagon	
-	G	1/4		5/8	-	21	11	19	hexagon	
-	B	3/8		3/4	-	23	13	22	hexagon	
-	G	3/8		3/4	-	23	13	22	hexagon	
-	B	1/2		1	-	25	11	26	hexagon	
-	G	1/2		1	-	25	11	26	hexagon	
-	B	1/2	s	1 1/8	-	25	11	26	hexagon	
-	G	1/2	s	1 1/8	-	25	11	26	hexagon	
-	B	3/4		1 1/4	-	28	13	32	hexagon	
-	G	3/4		1 1/4	-	28	13	32	hexagon	
-	B	1		1 1/2	-	31	14	38	hexagon	
-	G	1		1 1/2	-	31	14	38	hexagon	
-	B	1 1/4		2	-	33	14	48	hexagon	
-	G	1 1/4		2	-	33	14	48	hexagon	
-	B	1 1/2		2 1/4	-	36	17	54	hexagon	
-	G	1 1/2		2 1/4	-	36	17	54	hexagon	
-	B	2		2 3/4	-	42	18	66	hexagon	
-	G	2		2 3/4	-	42	18	66	hexagon	
-	B	2 1/2		3 1/2	-	41	14	85	octagon	
-	G	2 1/2		3 1/2	-	41	14	85	octagon	
-	B	3		4	-	48	18	96	octagon	
-	G	3		4	-	48	18	96	octagon	
-	B	4		5	-	62	26	120	octagon	
-	G	4		5	-	62	26	120	octagon	



381 Union end taper seat

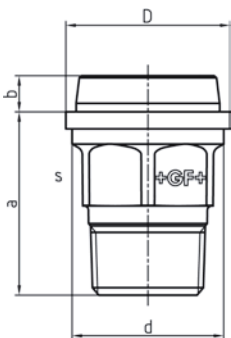
Is usually not supplied as a separate piece.

G ... refers to the thread size G of the union nut 374, which can be combined with the union end.

** Version

I hex = Internal hexagon

EN		Dim. Rp [inch]	**	G [inch]	Code	a [mm]	b [mm]	d [mm]	z [mm]	s [mm]	
-	B	1/8		1/2	-	17.5	6.5	15.8	10.5	15	hexagon
-	G	1/8		1/2	-	17.5	6.5	15.8	10.5	15	hexagon
-	B	1/4		5/8	-	20.5	6.0	18.1	10.5	10	I hex
-	G	1/4		5/8	-	20.5	6.0	18.1	10.5	10	I hex
-	B	3/8		3/4	-	22.0	6.5	21.6	12.0	12	I hex
-	G	3/8		3/4	-	22.0	6.5	21.6	12.0	12	I hex
-	B	1/2		1	-	22.5	7.5	27.0	9.5	25	octagon
-	G	1/2		1	-	22.5	7.5	27.0	9.5	25	octagon
-	B	1/2	s	1 1/8	-	21.0	8.0	31.5	8.0	26	hexagon
-	G	1/2	s	1 1/8	-	21.0	8.0	31.5	8.0	26	hexagon
-	B	3/4		1 1/4	-	22.5	8.0	35.5	6.5	31	hexagon
-	G	3/4		1 1/4	-	22.5	8.0	35.5	6.5	31	hexagon
-	B	1		1 1/2	-	26.5	8.5	40.9	8.5	38	hexagon
-	G	1		1 1/2	-	26.5	8.5	40.9	8.5	38	hexagon
-	B	1 1/4		2	-	31.5	9.0	52.4	12.0	48	hexagon
-	G	1 1/4		2	-	31.5	9.0	52.4	12.0	48	hexagon
-	B	1 1/2		2 1/4	-	33.0	9.5	58.4	14.0	54	hexagon
-	G	1 1/2		2 1/4	-	33.0	9.5	58.4	14.0	54	hexagon
-	B	2		2 3/4	-	35.5	11.5	73.4	10.5	66	hexagon
-	G	2		2 3/4	-	35.5	11.5	73.4	10.5	66	hexagon
-	B	2 1/2		3 1/2	-	42.5	13.5	91.9	15.5	85	octagon
-	G	2 1/2		3 1/2	-	42.5	13.5	91.9	15.5	85	octagon
-	B	3		4	-	45.5	14.5	104.4	15.5	96	octagon
-	G	3		4	-	45.5	14.5	104.4	15.5	96	octagon
-	B	4		5	-	46.5	15.5	128.7	10.5	120	octagon
-	G	4		5	-	46.5	15.5	128.7	10.5	120	octagon

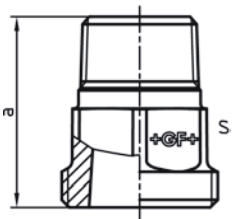
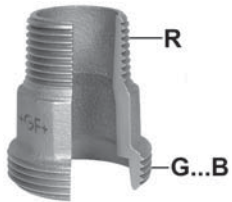


382 Union end taper seat

Is usually not supplied as a separate piece.

G ... refers to the thread size G of the union nut 374, which can be combined with the union end.

EN		Dim. R [inch]	G [inch]	Code	a [mm]	b [mm]	d [mm]	s [mm]	
-	B	1/4	5/8	-	32.0	6.0	18.1	15	hexagon
-	G	1/4	5/8	-	32.0	6.0	18.1	15	hexagon
-	B	3/8	3/4	-	34.0	6.5	21.6	19	octagon
-	G	3/8	3/4	-	34.0	6.5	21.6	19	octagon
-	B	1/2	1	-	40.5	7.5	27.0	23	hexagon
-	G	1/2	1	-	40.5	7.5	27.0	23	hexagon
-	B	3/4	1 1/4	-	43.8	8.0	35.5	30	hexagon
-	G	3/4	1 1/4	-	43.8	8.0	35.5	30	hexagon
-	B	1	1 1/2	-	49.5	8.5	40.9	36	hexagon
-	G	1	1 1/2	-	49.5	8.5	40.9	36	hexagon
-	B	1 1/4	2	-	56.0	9.0	52.4	48	hexagon
-	G	1 1/4	2	-	56.0	9.0	52.4	48	hexagon
-	B	1 1/2	2 1/4	-	58.0	9.5	58.4	54	hexagon
-	G	1 1/2	2 1/4	-	58.0	9.5	58.4	54	hexagon
-	B	2	2 3/4	-	62.5	11.5	73.4	66	hexagon
-	G	2	2 3/4	-	62.5	11.5	73.4	66	hexagon
-	B	2 1/2	3 1/2	-	75.5	13.5	91.9	85	octagon
-	G	2 1/2	3 1/2	-	75.5	13.5	91.9	85	octagon
-	B	3	4	-	80.5	14.5	104.4	95	octagon
-	G	3	4	-	80.5	14.5	104.4	95	octagon
-	B	4	5	-	87.0	15.5	128.7	120	hexagon
-	G	4	5	-	87.0	15.5	128.7	120	hexagon

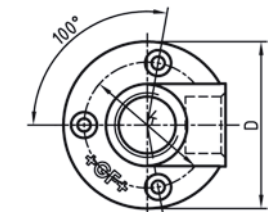
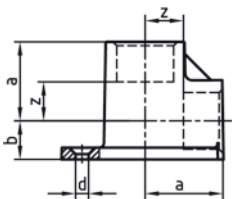


383 Union bush taper seat

Is usually not supplied as a separate piece.

EN		Dim. R [inch]	G...B [inch]	Code	a [mm]	s [mm]	
-	B	1/4	5/8	-	35	19	hexagon
-	G	1/4	5/8	-	35	19	hexagon
-	B	3/8	3/4	-	39	22	hexagon
-	G	3/8	3/4	-	39	22	hexagon
-	B	1/2	1	-	44	26	hexagon
-	G	1/2	1	-	44	26	hexagon
-	B	3/4	1 1/4	-	48	32	hexagon
-	G	3/4	1 1/4	-	48	32	hexagon
-	B	1	1 1/2	-	54	38	hexagon
-	G	1	1 1/2	-	54	38	hexagon
-	B	1 1/4	2	-	58	48	hexagon
-	G	1 1/4	2	-	58	48	hexagon
-	B	1 1/2	2 1/4	-	61	54	hexagon
-	G	1 1/2	2 1/4	-	61	54	hexagon
-	B	2	2 3/4	-	71	66	hexagon
-	G	2	2 3/4	-	71	66	hexagon

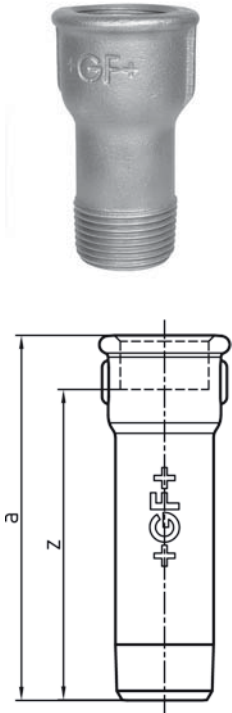
471 Bracket elbow



EN		Dim. [inch]	Code	a [mm]	b [mm]	d [mm]	z [mm]	k [mm]	D [mm]
-	G	3/8	770 471 203	25	12	4.5	15	41.5	60
-	G	1/2	770 471 204	28	14	5.5	15	44.5	62
-	G	3/4	770 471 205	33	17	5.5	18	53.5	70

526 Extension tube

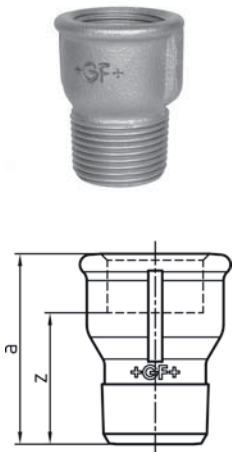
* Due to overall fitting length, the length of the external thread does not comply with the standard.



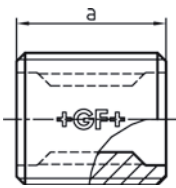
EN		Dim. [inch]	Length [mm]	Code	a [mm]	z [mm]
-	B	3/8	100	770 526 119	100	90
-	G	3/8	100	770 526 219	100	90
*-	B	1/2	30	770 526 120	30	17
*-	G	1/2	30	770 526 220	30	17
-	B	1/2	50	770 526 121	50	37
-	G	1/2	50	770 526 221	50	37
-	B	1/2	60	770 526 122	60	47
-	G	1/2	60	770 526 222	60	47
-	B	1/2	70	770 526 123	70	57
-	G	1/2	70	770 526 223	70	57
-	B	1/2	80	770 526 124	80	67
-	G	1/2	80	770 526 224	80	67
-	B	1/2	100	770 526 125	100	87
-	G	1/2	100	770 526 225	100	87
-	B	1/2	120	770 526 126	120	107
-	G	1/2	120	770 526 226	120	107
*-	B	3/4	30	770 526 127	30	15
*-	G	3/4	30	770 526 227	30	15
*-	B	3/4	40	770 526 128	40	25
*-	G	3/4	40	770 526 228	40	25
-	B	3/4	60	770 526 129	60	45
-	G	3/4	60	770 526 229	60	45
-	B	3/4	70	770 526 130	70	55
-	G	3/4	70	770 526 230	70	55
-	B	3/4	80	770 526 131	80	65
-	G	3/4	80	770 526 231	80	65
-	B	3/4	100	770 526 132	100	85
-	G	3/4	100	770 526 232	100	85
*-	B	1	40	770 526 133	40	23
*-	G	1	40	770 526 233	40	23
-	B	1	80	770 526 134	80	63
-	G	1	80	770 526 234	80	63
-	B	1	100	770 526 135	100	83
-	G	1	100	770 526 235	100	83

529a Extension socket, left and right hand thread, ISO/EN M4

ST ... these types of fittings are made from steel (galvanised finish = electroplated) and not suitable for drinking water installations. Steel parts are hexagonal instead of beaded.



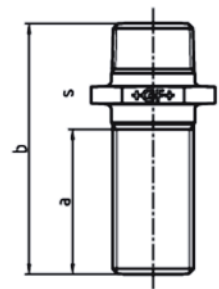
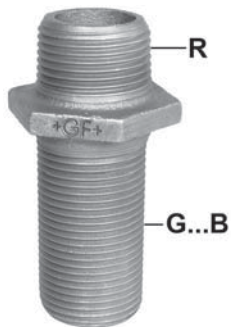
EN		Dim. [inch]	Code	a [mm]	s [mm]	z [mm]
ST_	B	1/4	770 529 102	28	17	18
ST_	G	1/4	770 529 202	28	17	18
ST_	B	3/8	770 529 103	35	22	25
ST_	G	3/8	770 529 203	35	22	25
•	B	1/2	770 529 104	43		30
•	G	1/2	770 529 204	43		30
•	B	3/4	770 529 105	48		33
•	G	3/4	770 529 205	48		33
•	B	1	770 529 106	55		38
•	G	1	770 529 206	55		38
-	B	1 1/4	770 529 107	60		41
-	G	1 1/4	770 529 207	60		41
-	B	1 1/2	770 529 108	63		44
-	G	1 1/2	770 529 208	63		44
-	B	2	770 529 109	70		46
-	G	2	770 529 209	70		46



531 Nipple

ST ... these types of fittings are made from steel (galvanised finish = electroplated) and not suitable for drinking water installations.

EN		G...B [inch]	Code	a [mm]	
ST_	B	3/8	770 970 145	23	
ST_	G	3/8	770 970 245	23	
ST_	B	1/2	770 970 146	25	
ST_	G	1/2	770 970 246	25	
ST_	B	3/4	770 970 147	30	
ST_	G	3/4	770 970 247	30	
ST_	B	1	770 970 148	35	
ST_	G	1	770 970 248	35	



534 Longscrew hexagon nipple

Hot dip galvanised, thread electroplated.

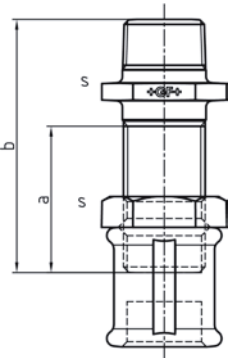
EN		Dim. [inch]	Code	a [mm]	b [mm]	s [mm]	
-	G	1/2	770 534 204	46	77	32	
-	G	3/4	770 534 205	49	82	36	
-	G	1	770 534 206	56	92	46	



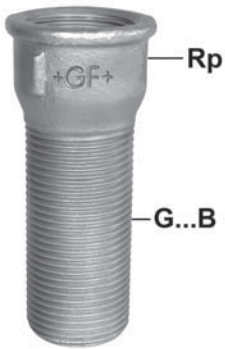
535

Longscrew hexagon nipple, complete

* Large chamfer (gasket chamber)



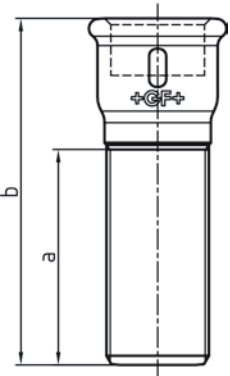
EN		Dim. [inch]	Code	a [mm]	b [mm]	s [mm]
-	G	1/2	770 535 204	46	77	32
-	G	3/4	770 535 205	49	82	36
-	G	1	770 535 206	56	92	46



536

Longscrew socket

Hot dip galvanised, thread electroplated.



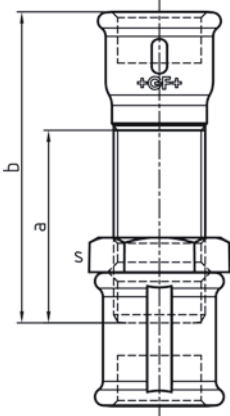
EN		Dim. [inch]	Length [mm]	Code	a [mm]	b [mm]
-	G	1/2	80	770 536 204	50	80
-	G	3/4	90	770 536 205	57	90
-	G	1	100	770 536 206	65	100
-	G	1 1/4	116	770 536 207	75	116
-	G	1 1/2	125	770 536 208	84	125
-	G	2	143	770 536 209	98	143



537 Longscrew socket, complete

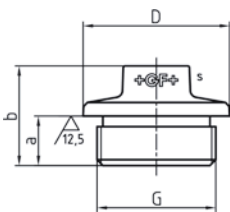
* Large chamfer (gasket chamber)

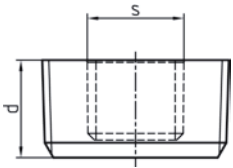
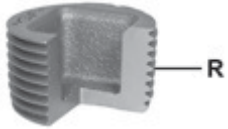
EN		Dim. [inch]	Code	a [mm]	b [mm]	s [mm]	
-	G	1/2	770 537 204	50	80	32	
-	G	3/4	770 537 205	57	90	36	
-	G	1	770 537 206	65	100	46	
-	G	1 1/4	770 537 207	75	116	55	
-	G	1 1/2	770 537 208	84	125	60	
-	G	2	770 537 209	98	143	73	



595 Plug with one machined face

EN		G...B [inch]	Code	a [mm]	b [mm]	D [mm]	s [mm]	
-	B	1/2	770 595 104	11	23	28	11	
-	G	1/2	770 595 204	11	23	28	11	
-	B	3/4	770 595 105	11	24	35	17	
-	G	3/4	770 595 205	11	24	35	17	
-	B	1	770 595 106	14	28	41	19	
-	G	1	770 595 206	14	28	41	19	



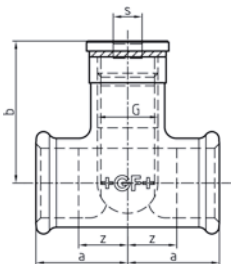
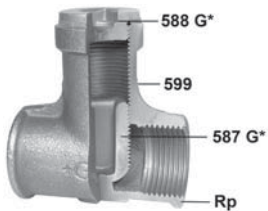


596

Plug, hexagon/square inside, ISO/EN T11

ST ... these types of fittings are made from steel (galvanised finish = electroplated) and not suitable for drinking water installations.

EN	BS		Dim. R [inch]	Code	d [mm]	s [mm]	
ST_	-	B	1/8	770 596 101	8	5	hexagonal
ST_	-	G	1/8	770 596 201	8	5	hexagonal
ST_	•	B	1/4	770 596 102	10	7	hexagonal
ST_	•	G	1/4	770 596 202	10	7	hexagonal
ST•	-	B	3/8	770 596 103	10	8	hexagonal
ST•	-	G	3/8	770 596 203	10	8	hexagonal
•	-	B	1/2	770 596 104	15	10	square
•	-	G	1/2	770 596 204	15	10	square
•	-	B	3/4	770 596 105	17	12	square
•	-	G	3/4	770 596 205	17	12	square
•	-	B	1	770 596 106	19	16	square
•	-	G	1	770 596 206	19	16	square
-	•	B	1 1/4	770 596 107	22	22	square
-	•	G	1 1/4	770 596 207	22	22	square
-	•	B	1 1/2	770 596 108	22	22	square
-	•	G	1 1/2	770 596 208	22	22	square
-	•	B	2	770 596 109	27	27	square
-	•	G	2	770 596 209	27	27	square



599a

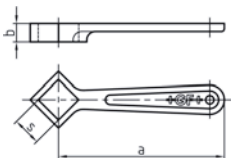
Regulation socket

* brass

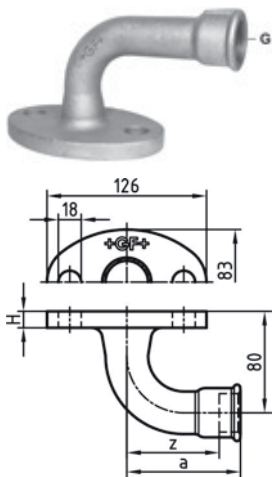
EN		Dim. Rp [inch]	G...B [inch]	Code	a [mm]	b [mm]	z [mm]	s [mm]
-	B	1/2	3/8	770 599 104	27	45.5	14	8
-	G	1/2	3/8	770 599 204	27	45.5	14	8
-	B	3/4	1/2	770 599 105	32	55.5	17	10
-	G	3/4	1/2	770 599 205	32	55.5	17	10
-	B	1	3/4	770 599 106	38	64.5	21	12
-	G	1	3/4	770 599 206	38	64.5	21	12
-	B	1 1/4	1 1/8	770 599 107	45	81.0	26	17
-	G	1 1/4	1 1/8	770 599 207	45	81.0	26	17
-	B	1 1/2	1 1/4	770 599 108	47	77.0	28	22
-	B	2	1 3/4	770 599 109	57	98.5	33	27

901

Stopcock spanner

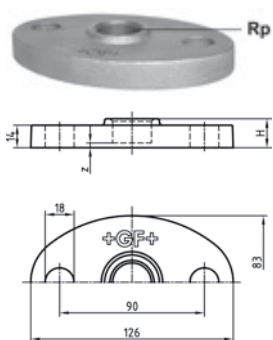


Dim. s [mm]	Code	a [mm]	b [mm]
10	770 901 215	88	11
12	770 901 217	95	12
14	770 901 218	110	13
17	770 901 219	130	14



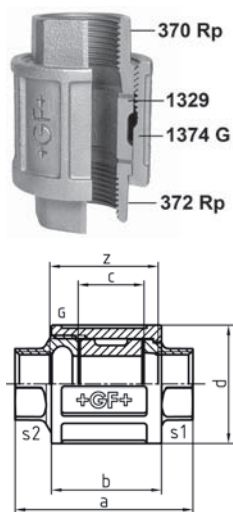
933 Water meter bend

EN		G...B [inch]	Code	a [mm]	z [mm]	H [mm]	
-	G	¾	770 933 205	115	100	14	
-	G	1	770 933 206	90	73	13	
-	G	1 ¼	770 933 207	90	71	13	



933a Counter Flange to fig. 933

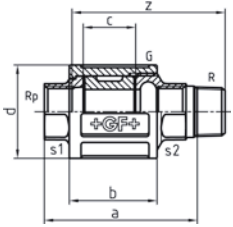
EN		Dim. Rp [inch]	Code	H [mm]	z [mm]	
-	G	¾	770 932 205	18	3	
-	G	1	770 932 206	19	2	
-	G	1 ¼	770 932 207	22	3	



1330 "Baumer" union flat seat

* Piece parts: 370 ½ s and 372 ½ s

EN		Dim. Rp [inch]	G...B [inch]	Code	a [mm]	b [mm]	c [mm]	d [mm]	z [mm]	s1 [mm]	s2 [mm]	
*	B	½	1 ½	770 970 174	71	44	24	46	45	25	26	
-	B	¾	1 ¼	770 970 175	74	44	24	50	44	31	31	
-	B	1	1 ½	770 970 176	85	51	28	57	51	38	38	



1335 "Baumer" union flat seat

* Piece parts: 372 ½ s and 376 ½ s

EN		Dim. R, Rp [inch]	G...B [inch]	Code	a [mm]	b [mm]	c [mm]	d [mm]	z [mm]	s1 [mm]	s2 [mm]
*-	B	½	1 ⅛	770 970 177	87.5	44	24	46	74.5	25	26
-	B	¾	1 ¼	770 970 178	94.0	44	24	50	79.0	31	32
-	B	1	1 ½	770 970 179	108.0	51	28	57	91.0	38	38