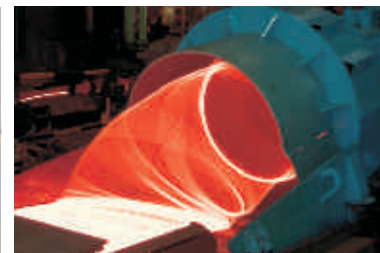




Giving Edge to your Business
Stainless Steel
WIRE ROD • BARS • WIRES



Steel Making



Hot Rolling



Cold Finishing

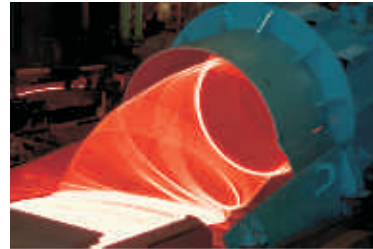
ABOUT US

Panchmahal Steel Limited, with 35 years of steel making experience, is a global supplier of Stainless Steel long products, offering a comprehensive range of Austenitic, Ferritic and Martensitic Stainless Steels in various sizes and finishes; in the form of billets, hot rolled bars, wire rod and cold finished bars & wires.

With fully integrated facilities from steel making to cold finishing, Panchmahal's core strength lies in its ability to meet customer's unique requirements of product selection, service and delivery across the globe.

Panchmahal's list of prestigious clients include wire & bar drawers, re-rollers, forge shops, manufacturers of welding electrodes, fasteners, springs, balls; as well as machinists, fabricators, traders, distributors & stock holders around the world.

The year 2008 will be a major turning point in the history of the company which will see the commissioning of several projects catapulting us into the next phase of increased productivity and further value additions for our customers. The expansions include the commissioning of the state-of-the-art 150,000mt capacity steel melting shop, heat treatment shops for bars & wire rod, new coil-to-bar drawing & bar-to-bar peeling lines and a brand new wire rod pickling line.

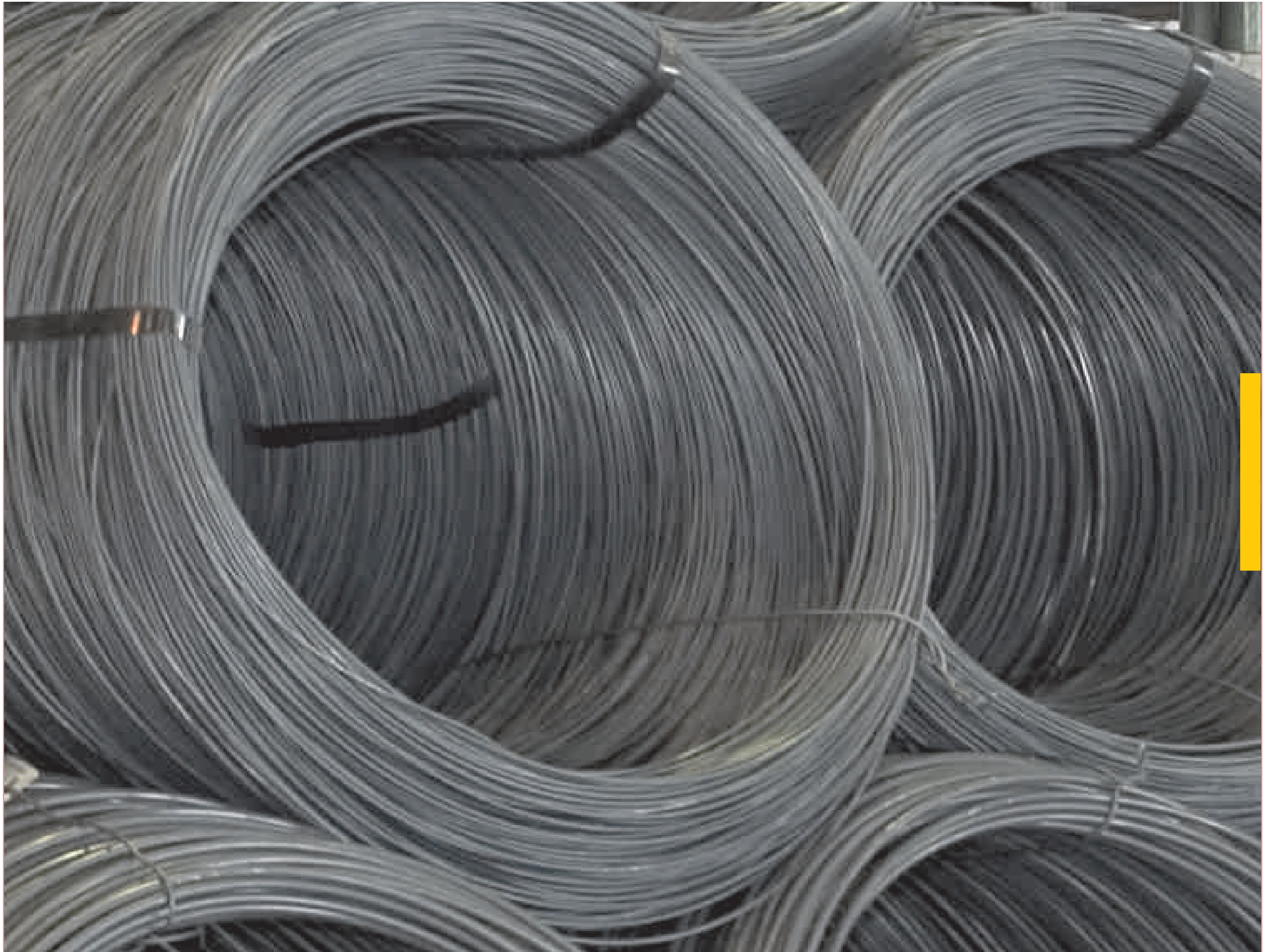




The new 150,000mt steel melting shop



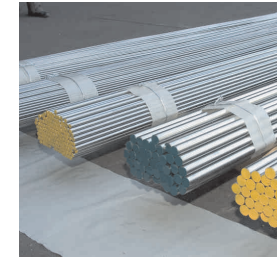
VESSEL TILT



PRODUCT RANGE

Wire Rod, Bars & Wires for:

- Architecture, Building & Construction
- Automobile components
- Ball manufacturing
- Bar & Wire Drawing
- Cold Heading
- Food processing equipment
- Hot Forging
- Machining
- Refractory anchors
- Shafting bars
- Spokes
- Springs
- Surgical Instruments
- Thread rolling
- Welding
- White Goods &
- Consumer Durables



Stainless Steel Wire Rod

Supply condition	: Hot Rolled Hot Rolled, Annealed & Pickled
Coil weight	: 650 kg
Size range	: 5.5 mm to 26.3 mm

Stainless Steel Bars

Supply condition	: Hot Rolled & Straightened Hot Rolled, Annealed & Straightened Cold drawn & polished Peeled & polished Strain hardened (Class 1 and 2)
Size range	: 2.00 mm to 84.00 mm
Tolerances	: h8, h9, h10, h11, k12, DIN 1013, A484, GRIT 240 & 320
Length	: 1000 - 12000 mm
Packing	: 100 - 1000 kg bundles

Stainless Steel Wires

Supply condition	: Soft Annealed Bright Annealed $\frac{1}{4}$ hard, $\frac{1}{2}$ hard, full hard EPQ
Size range	: 0.6 mm to 16.0 mm
Coil weight	: 10 kg to 650 kg
Packing	: Loose coils Metal carriers Core Packing (with/without pallet) Drums Cheese wound/Euro Coils Spools

PRODUCT FORM & APPLICATIONS

Panchmahal	Equivalent			Forms of Product					Application						
	EN	JIS	ASTM / UNS	Wire Rod	Bars	Wires	Re - Bar	General Purpose	Cold Heading	Welding	Free Machining	Heat Resisting	Ball Mfg.	Spring	Shaft
AISI 201	-	-	201 / S 20100	•	•	•		•							
201	-	-	-	•	•	•		•							
201CU	-	-	-	•	•	•		•	•						
201PNI3	-	-	-	•	•	•			•						
202	-	SUS 202	202 / S20200	•	•	•		•							
203	-	-	XM-1 / S20300	•	•	•					•				
204Cu	-	-	S20430	•	•	•	•	•	•					•	
1.4597	1.4597	-	-	•	•	•		•	•						
301	1.4310	SUS 301	301	•	•	•		•						•	
302	-	SUS 302	302 / S30200	•		•		•						•	
302HQ	1.4567	SUS XM7	S30430	•		•			•						
303	1.4305	SUS 303	303 / S30300	•	•	•					•				
303Cu	-	SUS 303Cu	-	•	•	•					•				
304 / 304 S	1.4301	SUS 304	304 / S30400	•	•	•	•	•	•		•		•	•	•
304Cu2	-	SUS 304J3	-	•		•			•				•		
304L / 304LS	1.4307	-	304L / S30403	•	•	•		•	•		•				
310S	1.4845	SUS 310S	310S / S31008	•	•	•						•			
1.4828	1.4828	-	-	•	•	•						•			
314	-	-	314 / S31400	•	•	•						•			
1.4841	1.4841	-	314 / S31400	•	•	•						•			
316 / 316S	1.4401	SUS 316	316 / S31600	•	•	•		•	•		•			•	•
316L / 316LS	1.4404	-	316L / S31603	•	•	•		•	•		•				
1.4436	1.4436	-	-	•	•	•	•						•		
1.4429	1.4429	-	-	•	•	•	•								

The above table is a general representation based on Panchmahal's current customer profiles. Customer specific grades can be produced upon request.

PRODUCT FORM & APPLICATIONS

Panchmahal	Equivalent			Forms of Product					Application							
	EN	JIS	ASTM / UNS	Wire Rod	Bars	Wires	Re- Bar	Forgings	General Purpose	Cold Heading	Welding	Free Machining	Heat Resisting	Ball Mfg.	Spring	Shaft
1.4435	1.4435	SUS 316L	316L / S31603	•	•	•		•	•							
316Ti	1.4571	SUS 316Ti	316Ti / S31635	•	•	•		•	•							•
317L	1.4438	SUS 317L	317L / S31703	•	•	•		•	•							
321	1.4541	SUS 321	321 / S32100	•	•	•		•	•							•
403	-	SUS 403	403 / S40300	•	•	•			•	•						•
409	1.4512	-	409 / S40900	•	•	•			•	•						
409Cb	-	-	S40940	•	•	•			•	•						
410	1.4006	SUS 410	410 / S41000	•	•				•	•						•
410L	-	SUS 410L	-	•		•				•						
416	1.4005	SUS 416	416 / S41600	•	•							•				
420	1.4021	SUS 420J1	420 / S42000	•	•				•					•		•
420B	1.4028	SUS 420J2	-	•	•									•		•
420C	1.4034	-	-	•	•									•		•
420NiMo	-	-	-	•		•								•		
430	1.4016	SUS 430	430 / S43000	•	•	•			•							
430L	1.4016	SUS 430	430 / S43000	•	•	•			•	•				•		
430F	-	SUS 430F	430F / S43020	•	•	•						•				
431	-	SUS 431	431 / S43100	•	•	•										•
1.4057	1.4057	SUS 431	431 / S43100	•	•	•										•
434	1.4113	SUS 434	434 / S43400	•	•	•			•							
446	-	-	446 / S44600	•	•	•			•				•			
1.4104	1.4104	-	-	•	•							•				
1.4105	1.4105	-	-	•	•							•				
1.4511	1.4511	-		•	•	•			•	•						•
17-4PH	1.4542	SUS 630	630 / S17400	•	•	•			•							•

The above table is a general representation based on Panchmahal's current customer profiles. Customer specific grades can be produced upon request.



PRODUCT FORM & APPLICATIONS



Panchmahal	Equivalent			Forms of Product					Application							
	EN	AWS	ASTM / UNS	Wire Rod	Bars	Wires	Re-Bar	Forgings	General Purpose	Cold Heading	Welding	Free Machining	Heat Resisting	Ball Mfg.	Spring	Shaft
ER 307		ER307		•		•					•					
ER308		ER308		•		•					•					
ER 308H		ER308H		•		•					•					
ER 308L		ER308L		•		•					•					
ER 308Mo		ER308Mo		•		•					•					
ER 308LMo		ER308LMo		•		•					•					
ER 308Si		ER308Si		•		•					•					
ER 308LSi		ER308LSi		•		•					•					
ER 309		ER309		•		•					•					
ER 309L		ER309L		•		•					•					
ER 309Si		ER309Si		•		•					•					
ER 309LSi		ER309LSi		•		•					•					
ER 310		ER310		•		•					•					
ER 312		ER312				•					•					
ER 316		ER316		•		•					•					
ER 316H		ER316H		•		•					•					
ER 316L		ER316L		•		•					•					
ER 316Si		ER316Si		•		•					•					
ER 316LSi		ER316LSi		•		•					•					
ER 317		ER317		•		•					•					
ER 317L		ER317L		•		•					•					
ER 321		ER321		•		•					•					
ER 347		ER347		•		•					•					
ER 347Si		ER347Si		•		•					•					
ER 409		ER409		•		•					•					
ER 409Cb		ER409Cb		•		•					•					
ER 410		ER410		•							•					
ER 410NiMo		ER410NiMo		•							•					
ER 420		ER420		•							•					
ER 1.4122		-		•							•					
ER 430		ER430		•		•					•					

The above table is a general representation based on Panchmahal's current customer profiles. Customer specific grades can be produced upon request.

GENERAL APPLICATIONS

Austenitic, Ferritic and Martensitic Stainless Steels are available in the form of cold finished bars and wires for general applications. The range also includes the increasingly popular low Nickel - high Manganese grades, better known as 200 series for applications such as white goods & consumer durables and architecture, building & construction.



COLD HEADING & FASTENERS

A range of wire rod, bar and wire products are available for cold heading and fasteners. The products include normal and high tensile bright bars for thread rolling as well as coated & un-coated wire rod & wires for forging.



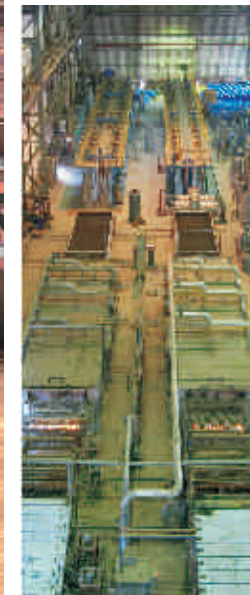
Panchmahal	COLD HEADING		
	Equivalent		
	EN	JIS	ASTM / UNS
201CU	-	-	-
201PNI3	-	-	-
204Cu	-	-	S20430
1.4597	1.4597	-	-
302HQ	1.4567	SUS XM7	S30430
304 / 304 S	1.4301	SUS 304	304 / S30400
304Cu2	-	SUS 304J3	-
304L / 304LS	1.4307	-	304L / S30403
316 / 316S	1.4401	SUS 316	316 / S31600
316L / 316LS	1.4404	-	316L / S31603
403	-	SUS 403	403 / S40300
409	1.4512	-	409 / S40900
409Cb	-	-	S40940
410	1.4006	SUS 410	410 / S41000
410L	-	SUS 410L	-
430L	1.4016	SUS 430	430 / S43000
1.4511	1.4511	-	-

Panchmahal	GENERAL PURPOSE		
	Equivalent		
	EN	JIS	ASTM / UNS
AISI 201	-	-	201 / S 20100
201	-	-	-
201CU	-	-	-
202	-	SUS 202	202 / S20200
204Cu	-	-	S20430
1.4597	1.4597	-	-
301	1.4310	SUS 301	301
302	-	SUS 302	302 / S30200
304 / 304 S	1.4301	SUS 304	304 / S30400
304L / 304LS	1.4307	-	304L / S30403
316 / 316S	1.4401	SUS 316	316 / S31600
316L / 316LS	1.4404	-	316L / S31603
1.4435	1.4435	SUS 316L	316L / S31603
316Ti	1.4571	SUS 316Ti	316Ti / S31635
317L	1.4438	SUS 317L	317L / S31703
321	1.4541	SUS 321	321 / S32100
403	-	SUS 403	403 / S40300
409	1.4512	-	409 / S40900
409Cb	-	-	S40940
410	1.4006	SUS 410	410 / S41000
420	1.4021	SUS 420J1	420 / S42000
430	1.4016	SUS 430	430 / S43000
430L	1.4016	SUS 430	430 / S43000
434	1.4113	SUS 434	434 / S43400
446	-	-	446 / S44600
1.4511	1.4511	-	-
17-4PH	1.4542	SUS 630	630 / S17400



WIRE ROD & WIRES FOR WELDING

WELDING	
Panchmahal	Equivalent
	AWS
ER 307	ER307
ER308	ER308
ER 308H	ER308H
ER 308L	ER308L
ER 308Mo	ER308Mo
ER 308LMo	ER308LMo
ER 308Si	ER308Si
ER 308LSi	ER308LSi
ER 309	ER309
ER 309L	ER309L
ER 309Si	ER309Si
ER 309LSi	ER309LSi
ER 310	ER310
ER 312	ER312
ER 316	ER316
ER 316H	ER316H
ER 316L	ER316L
ER 316Si	ER316Si
ER 316LSi	ER316LSi
ER 317	ER317
ER 317L	ER317L
ER 321	ER321
ER 347	ER347
ER 347Si	ER347Si
ER 409	ER409
ER 409Cb	ER409Cb
ER 410	ER410
ER 410NiMo	ER410NiMo
ER 420	ER420
ER 1.4122	-
ER 430	ER430



Wire Rod

Supply Condition	: Hot Rolled Hot Rolled, Annealed & Pickled
Coil weight	: 500 - 600 kg
Size	: 5.5 mm

Core wires in coils

Sizes	: 0.8 mm to 5.0 mm
Finish	: Matt or bright
Packing	: 25 kg to 600 kg coils

Core wire in cut length

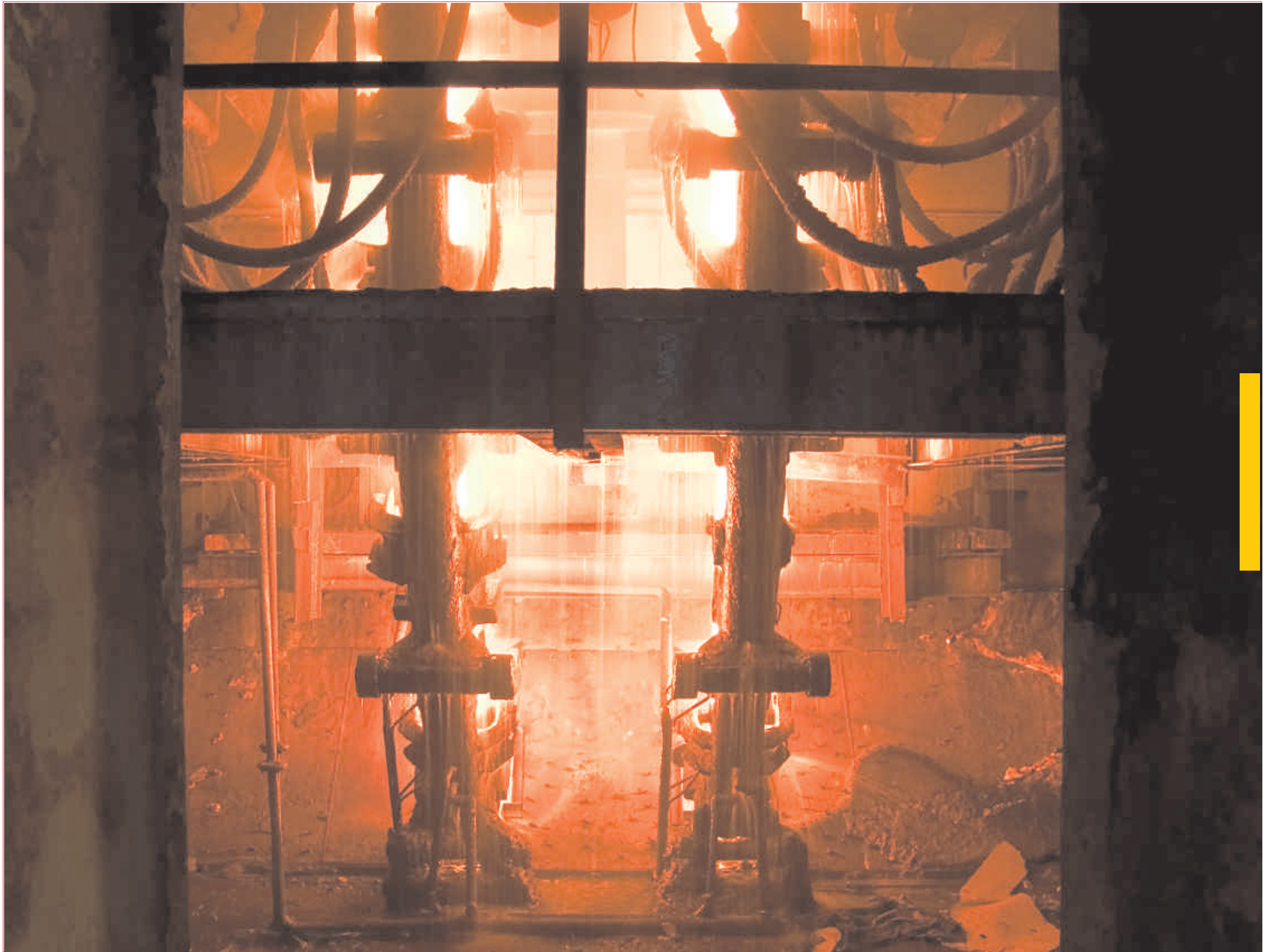
Sizes	: 0.8 mm to 5.0 mm
Length	: 300 mm and 350 mm
Packing	: 500 kg to 1000 kg wooden boxes

TIG wires

Sizes	: 0.8 mm to 5.0 mm
Length	: 1000 mm or 36"
Packing	: 5 kg, 10 kg & 10 Lbs plastic tubes

MIG wires

Sizes	: 0.80 mm to 1.60 mm
Packing	: Precision layer wound plastic or metal spools Precision layer wound wire basket Pay-off pack for automatic welding
Coil weights	: 1 kg or 2 Lbs 5 kg or 10 Lbs 12.5 kg or 25 Lbs 15 kg or 30 Lbs 150 kg 300 kg



WIRES FOR SPRINGS



SPRING			
Panchmahal	Equivalent		
	EN	JIS	ASTM / UNS
204Cu	-	-	S20430
301	1.4310	SUS 301	301
302	-	SUS 302	302 / S30200
304 / 304 S	1.4301	SUS 304	304 / S30400
316 / 316S	1.4401	SUS 316	316 / S31600

WIRE ROD & WIRES FOR BALL MAKING



BALL MANUFACTURING			
Panchmahal	Equivalent		
	EN	JIS	ASTM / UNS
304 / 304 S	1.4301	SUS 304	304 / S30400
304Cu2	-	SUS 304J3	-
420	1.4021	SUS 420J1	420 / S42000
420B	1.4028	SUS 420J2	-
420C	1.4034	-	-
420NiMo	-	-	-
430L	1.4016	SUS 430	430 / S43000



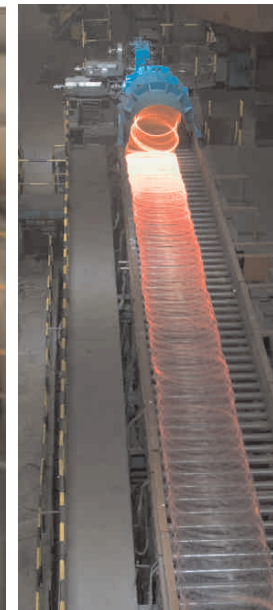
BARS & WIRES FOR FREE MACHINING

A range of Austenitic, Ferritic and Martensitic free machining grades are available with Sulphur 0.15-0.35% for improved machining and better tool life. All free machining grades are Ca-Si treated.



FREE MACHINING			
Panchmahal	Equivalent		
	EN	JIS	ASTM / UNS
203	-	-	XM-1 / S20300
303	1.4305	SUS 303	303 / S30300
303Cu	-	SUS 303Cu	-
304 / 304 S	1.4301	SUS 304	304 / S30400
304L / 304LS	1.4307	-	304L / S30403
316 / 316S	1.4401	SUS 316	316 / S31600
316L / 316LS	1.4404	-	316L / S31603
416	1.4005	SUS 416	416 / S41600
430F	-	SUS 430F	430F / S43020
1.4104	1.4104	-	-
1.4105	1.4105	-	-

HEAT RESISTANT BARS & WIRES



HEAT RESISTANT			
Panchmahal	Equivalent		
	EN	JIS	ASTM / UNS
310S	1.4845	SUS 310S	310S / S31008
1.4828	1.4828	-	-
314	-	-	314 / S31400
1.4841	1.4841	-	314 / S31400
446	-	-	446 / S44600

STAINLESS STEEL SHAFTING BARS

Hot rolled and cold finished bars are available from 5.0 mm to 84.0mm in standard as well as customized lengths. Heat treatment options include un-treated, annealed and quenched & tempered (hardened & tempered). Surface options include drawn & polished and ground & polished.



Panchmahal	SHAFTS		
	Equivalent		
	EN	JIS	ASTM / UNS
304 / 304 S	1.4301	SUS 304	304 / S30400
316 / 316S	1.4401	SUS 316	316 / S31600
316Ti	1.4571	SUS 316Ti	316Ti / S31635
321	1.4541	SUS 321	321 / S32100
403	-	SUS 403	403 / S40300
410	1.4006	SUS 410	410 / S41000
420	1.4021	SUS 420J1	420 / S42000
420B	1.4028	SUS 420J2	-
420C	1.4034	-	-
431	-	SUS 431	431 / S43100
1.4057	1.4057	SUS 431	431 / S43100
1.4511	1.4511	-	-
17-4PH	1.4542	SUS 630	630 / S17400

STAINLESS STEEL RE-BAR

Marketed under the PANCH brand Panchmahal offers Stainless Steel re-bars manufactured and tested as per BS 6744:2001. To compliment the re-bar product range we also offer tie wire for building and construction in grades 304, 316 as well as 204Cu/1.4597.



Size Range
Sizes : 4 - 14 mm
Weight : 600 kgs per coil
Inside diameter of Rib

Panchmahal	RE-BAR		
	Equivalent		
	EN	JIS	ASTM / UNS
204Cu	-	-	S20430
304 / 304 S	1.4301	SUS 304	304 / S30400
1.4429	1.4429	-	-
1.4436	1.4436	-	-

QUALITY ASSURANCE

Stringent process check programs at all stages of production, from steel meting to cold finishing, ensure reproducibility, consistency and reliability of all products to meet each customer's unique requirements. All deliveries are accompanied by the required certifications.



PED - Bars



PED - Forgings



ADW0 - Bars



ADW0 - Forgings



ISO 9001 - 2000



Corporate Office:

Landmark, 7th Floor, Race Course Circle
Vadodara - 390 007, Gujarat, INDIA
Phone: +91 265 305 1777
Fax: +91 265 305 1705
E-mail: sales@panchmahalsteel.co.in
Website: www.panchmahalsteel.co.in

Regd. Office:

GIDC Estate, Kalol - 389 330
Dist. Panchmahal, Gujarat, INDIA
Phone: +91 2676 304 777
Fax: +91 2676 304 888