

# TAG•EYE Professional Wireless Security

- Maximises Security Coverage
- Quick & Easy to Deploy
- Portable & Scalable Systems

- Local & Remote Protection
- Indoor & Outdoor Use
- Advanced Sensor Technology

**TAG•EYE** integrates the latest innovations in wireless communications and 3D seismic motion sensing technology into the ultimate long range battery powered security tag.

When attached to assets, site perimeters and access points the tag provides security alerts by sensing changes in motion, tilt and position due to tampering, intrusion and attempted theft.

Tags can communicate locally to pager units worn by security staff, or remotely via a gateway unit enabling alerts by SMS text, email and web browser.

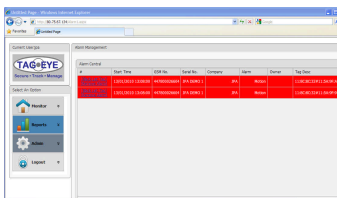
**TAG•EYE** systems can be deployed in minutes as they are battery operated and require no power or cabling. Systems are highly portable and can be re deployed easily in applications where security threats change over time.

## TAG•EYE Local



- **Tags send alarms directly to pager unit**
- Lowest cost system
- Supports multiple tags & pagers
- Range up to 500 meters outdoors
- Extended range with repeaters
- Improves security guard effectiveness

## TAG•EYE Remote



- **Alarms sent by text message, email or to 24/7 monitoring centre**
- Simple solution to secure remote sites and assets
- Supports multiple tags
- Extended tag range secures large sites
- Systems can be easily redeployed at different locations
- Remotely configurable
- One security guard can monitor several sites simultaneously



## Key Benefits

- Increases security without increasing manpower
- Eliminates blind spots inherent in patrolled security
- Fully battery powered systems
- Ultra portable solution for protecting mobile assets
- Quick and easy to install
- Precision sensing technology minimises false alarms

## Deployments

- British Transport Police trackside security
- Overhead power cable protection
- Hospital security
- Mobile alarm system for vacant premises
- Bicycle theft prevention for Universities
- Monitoring unauthorised use of emergency exits
- Vandal & trespass alarm



TAG•EYE products are exclusive to JPA Electronics Ltd  
JPA Electronics Ltd, Highfields, Dalbury Lees, Ashbourne DE6 5BE  
Tel 01332 824797 : Fax 0870 622 1797 : Email [tageye@jpaelectronics.co.uk](mailto:tageye@jpaelectronics.co.uk)