





# We are a design led manufacturer of storage solutions and office furniture

Our reputation has been built over many years through listening to our clients, offering unparalleled levels of service and consistently exceeding expectations. Our company ethos is based on having a friendly approach and on placing an equal level of importance to our suppliers, staff and customers alike, so from concept to creation our team will lead the way forward and demonstrate the true meaning of a working partnership. No matter how large or small the project, we approach it with the same level of dedication and professionalism, working with you and understanding your needs to ensure that our products exceed your expectations in every way.

## Our approach

### A passion for design

The entire workforce share a passion for design which is at the heart of every project we undertake.

Our highly skilled design team, who are used to working with specifiers, architects and dealers alike, are the backbone of the company.

It is through their extensive knowledge of available materials and production techniques that we are able to offer our clients the perfect solution.

### Created by craftsmen

Our experienced and highly skilled engineers pride themselves on having the traditional values so essential in ensuring that the highest levels of craftsmanship are continually maintained on each and every item we produce whatever its scale and complexity.

### Unrivalled levels of service

The team here are dedicated to delivering an unrivalled level of service with attention to detail being at the forefront of every department and every project we undertake.



## Contents

Introduction	2
Mobile shelving	4 - 13
Picture racking	14 - 15
Office storage	16 - 25
HTM-71	26
Library shelving	27 - 29
Ask the experts	30
Environmental commitment	30
Finishes	31

**'We pride ourselves on the quality of our workmanship, service and total commitment to the complete satisfaction of our customers'**



# Mobile shelving - the creation of space

## Why mobile shelving?

With property costs accounting for an ever increasing proportion of overheads, it has become increasingly important over recent years to optimise the utilisation of office space.

Mobile shelving systems allow you to either halve the space required for your shelving or double the storage capacity within the same footprint of traditional shelving.



### Traditional shelving

Traditional static shelving providing 120 linear metres of storage.



### Half the space

Reduce your shelf space, freeing up room for more productive uses of space such as additional desking. Providing 120 linear metres of storage.



### Double the capacity

Double your storage capacity within the same footprint as traditional shelving systems. Provide up to 240 linear metres of storage in the same footprint as traditional shelving – a 100% increase...

**Benefit: up to 50% savings on storage costs**

## Endless possibilities

A mobile shelving system can be tailored to your individual requirements to offer the most cost effective and flexible storage solution available today...

...and with our free six step design process it really could not be simpler.

## Ideal for...

- General office filing and archiving
- Surgery and hospital records
- Library and museum archives
- Schools and colleges
- Solicitors practices
- Retail storage

## A minimum of disruption

Mobile shelving is a surface mounted system requiring no additional building works or fixing to the floor. Installation is noise and dust free and quicker than most other systems.

## Relocation, relocation

The system is 100% relocatable. The modular design ensures that if the system needs to be relocated, there is no need for any additional parts and no additional building works. 100% relocatable means the system is cost efficient and minimises environmental impact.



# Single skin shelving system

Single skin shelving is a cost competitive system utilising the latest manufacturing techniques to blend strength, versatility and a pleasing aesthetic.

Form and Function demanded a product which is simple and economical to install, single skin is ideal for most commercial and light industrial applications, but it is not limited to these, and as a result it is a popular choice for a wide variety of public organisations including: libraries, museums & hospitals.

## Accessories

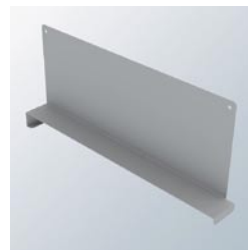
Designed with the customer in mind, a vast range of accessories are available for both single and double skin shelving



Wire divider



Part height divider



Pull out file rail



Fixed file rail



Tambour door



Al hanging drawing storage

# Double skin shelving system

Double skin shelving balances a clean front line, concealed fixings and ease of adjustment to form a premium product. It is ideally suited to the storage of books, valuable documents or files susceptible to damage from protrusions.

It provides clear uninterrupted access to the full width of the shelf and forms a practical storage solution for all types of installations where aesthetics and performance of stored media are important.

## Single and double skin, a system that always makes sense

We manufacture all standard size bays, but can manufacture bays up to a maximum of 3025mm high on all our products. We can also manufacture any depth and width from 125mm upwards.

### Standard heights

1825 - 2125 - 2425

### Standard widths

600 - 750 - 900 - 1000  
- 1100 - 1200 - 1250

### Standard depths

150 - 200 - 250 - 300 - 350  
- 400 - 450 - 500 - 600





## Designed just for you

We will tailor our products to cost effectively meet your specific requirements and maximise your available storage area. All designed to function perfectly in today's complex and demanding office environments.



### The options are endless

We will tailor the mobile shelving system to match your individual storage and space requirements to make a bold statement or blend seamlessly into your existing office décor.



## Better by design

Steel 'C' section track supports the infill floor to provide a level and trip free system.

The mobile shelving system also features anti-tilt devices and safety lock handles to ensure safe operation at all times – complying with all health & safety legislation.

### Hand pull

Up to two bays deep and a total load of no more than 3 tonnes. Pull required is approximately 4.5kg per tonnes of load.



### Mechanically assisted handles

A drive shaft is connected by a chain and sprocket to a manually operated hand wheel.

The standard drive gives a mechanical advantage of 4:1. A force of 0.4kg is required to move each tonne of load.



### Electric motor drive

With a 24vDC motor which can be operated by pressing a key or linked to a computer pc system.





## Chassis mobile shelving system

The Chassis mobile shelving system is a heavy duty mobile storage solution with an active Load Transfer System which enables each bay to easily accommodate up to 500kg.

Ideal for mixed shelving applications, the Chassis mobile storage system is particularly suited to Pallet Racking, Widespan and Cantilever racking.



### Flexibility as standard

The Chassis mobile storage system is ideal for applications where a bespoke storage solution is required.

The wide choice of colours and the unlimited range of interior storage options coupled with a high load bearing capacity, makes the Chassis mobile storage system incredibly flexible and hard wearing.







## Recessed track system

The tracks on the Chassis mobile storage system can be sunk into screed floors for a level surface.

The addition of carpets laid up to the track edges reduces the visual impact of the track system further.



## Providing the perfect solution for you...

The option of bespoke cabinets ensure that whatever your requirement, we will be able to provide you with the perfect solution.



## Versatile

Chassis bases are designed to suit any type of cabinets, shelving or racking system. This enables flexibility in configuration and versatility in design.



## Slide-a-side shelving

Our slide-a-side mobile shelving system maximises the flexibility of the system and has been designed as the ideal solution for corridors and walkways.

Slide-a-side mobile shelving enables the front bays to be moved from side to side to reveal shelving behind.

**“maximise your storage capabilities by using slide-a-side in walkways and corridors.”**

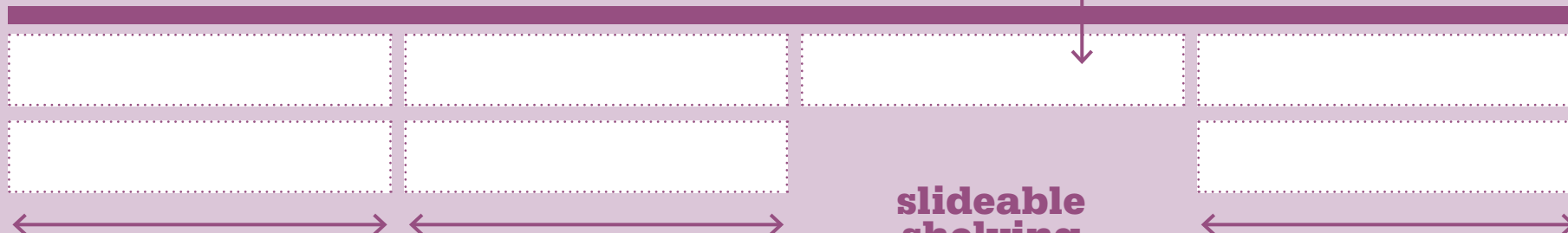


**Available in a wide range of sizes, finishes and with the option of lockable tambours, slide-a-side can be tailored to your exact specification**

Wall



Static/fixed shelving



**slideable shelving**





## Picture racking

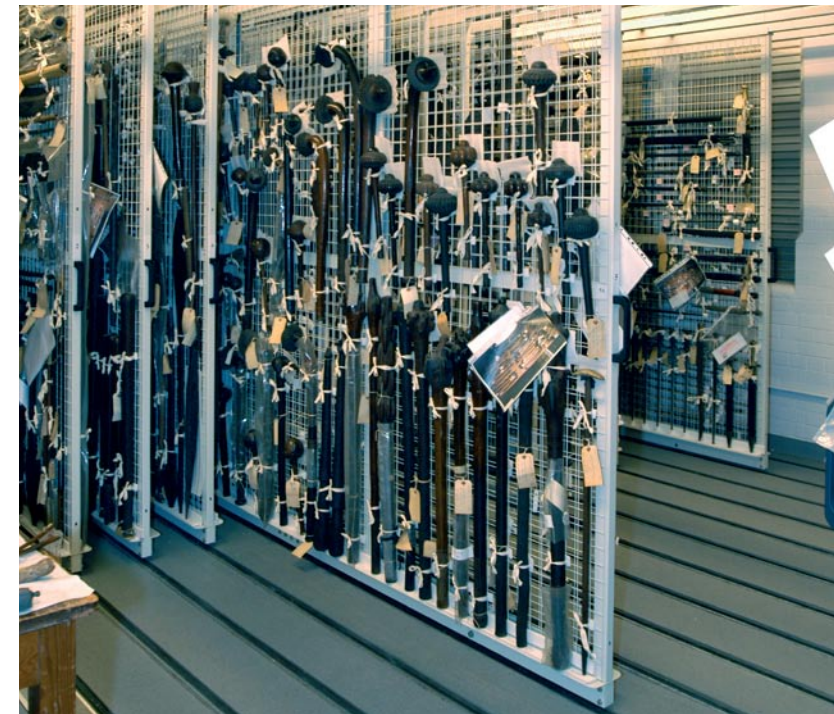
Our range of picture racking is the perfect choice if you wish to store valuable artwork both efficiently and safely.

The high density nature of picture racking ensures that artwork can be stored efficiently, without stacking or touching and yet can be accessed easily and viewed in situ.

### Configured to your exact requirements

We can configure our picture racking to your exact requirements, aiding you to achieve the maximum storage density possible.

We are also able to offer a range of colours for your picture racking so that it can be blended into the existing aesthetics or be used to make a bold statement.





## Suspended from above, or floor mounted... the choice is yours

Our picture racking offers the choice of being either suspended from above or floor mounted.

The option of ceiling suspension racking ensures that your floorspace can be kept clear. A floor mounted system is the perfect choice where there are high ceilings or a lack of suitable structure to affix to.

So whatever your requirement and whatever the volume of pictures you need to store, we can help you to achieve it perfectly...



## Axis rotary storage

Axis has been innovatively designed to meet the needs of office environments today. Offering a higher level of efficiency than traditional filing cabinets, Axis is a high density, fast retrieval rotary filing system.

Halve your retrieval times – the files rotate, the operator stands still.

Rigid steel case, flush fit closure and lockable door for maximum security.

Available in a wide range of colours, with accessories to compliment or replace your existing filing systems.

Installation is faster and dust free and the modular design ensures that the system is 100% relocatable with no need for extra parts or building works.







## Low rotary storage

Axis Low incorporates all of the features and benefits of a rotary storage unit. The low level design is ideal for office environments where higher level storage is inappropriate or undesirable.



## Wave rotary storage

Axis Wave is suitable when a premium storage unit is required. Axis Wave's design combines all of the great features of the standard unit with a curved front adding contemporary style.



## Steel storage

With a focus on getting the basics such as clean elegant lines, incredible ease of use and enhanced access just right, the Edia storage system raises the bar in office storage.

A wide range of modules allows you to maximise your storage requirements and create flexible units that help define your office environment.



**Key lockable**



**Dial locking**



**Auto dial locking**





**Sleek handles**



**Slim doors**



**Flat hinges**



## Lockers

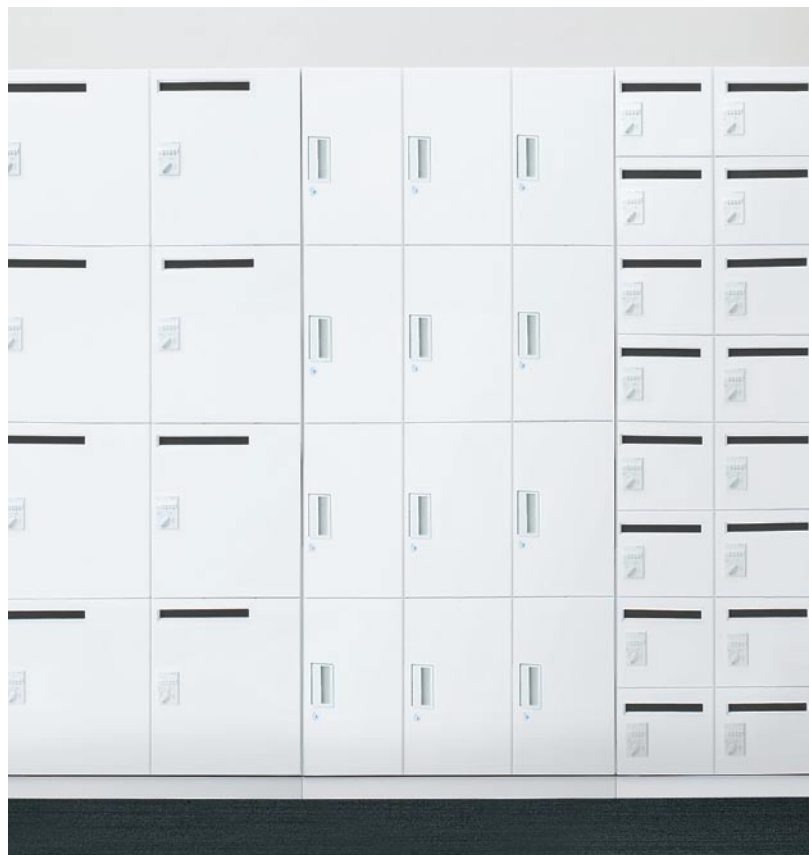
Storage systems by their very nature have a significant visual impact on any environment.

That is why it is essential for a truly design led office environment to choose a storage system where both design and functionality are taken to new levels of excellence.

Edia is the perfect choice for hot desking scenarios where secure personal storage solutions are required.







**Magnetic name cards**



**Interior wiring**



**Optional bag holder**

## Storage wall is the infinitely flexible storage solution

Storage wall is an infinitely flexible storage wall solution that can be individually designed to meet your exact requirements.

So whatever your specification, we can achieve it with a variety of finishes, internal storage fittings, waved or even curved doors and our new large format graphics panels.

Storage walls' structural design enables the units to be used as either standard storage cupboards or, as room dividers complete with pass through doors. Reducing cost and maximising space.

## Flexible design

The options of up and over or side opening tambour doors are available.

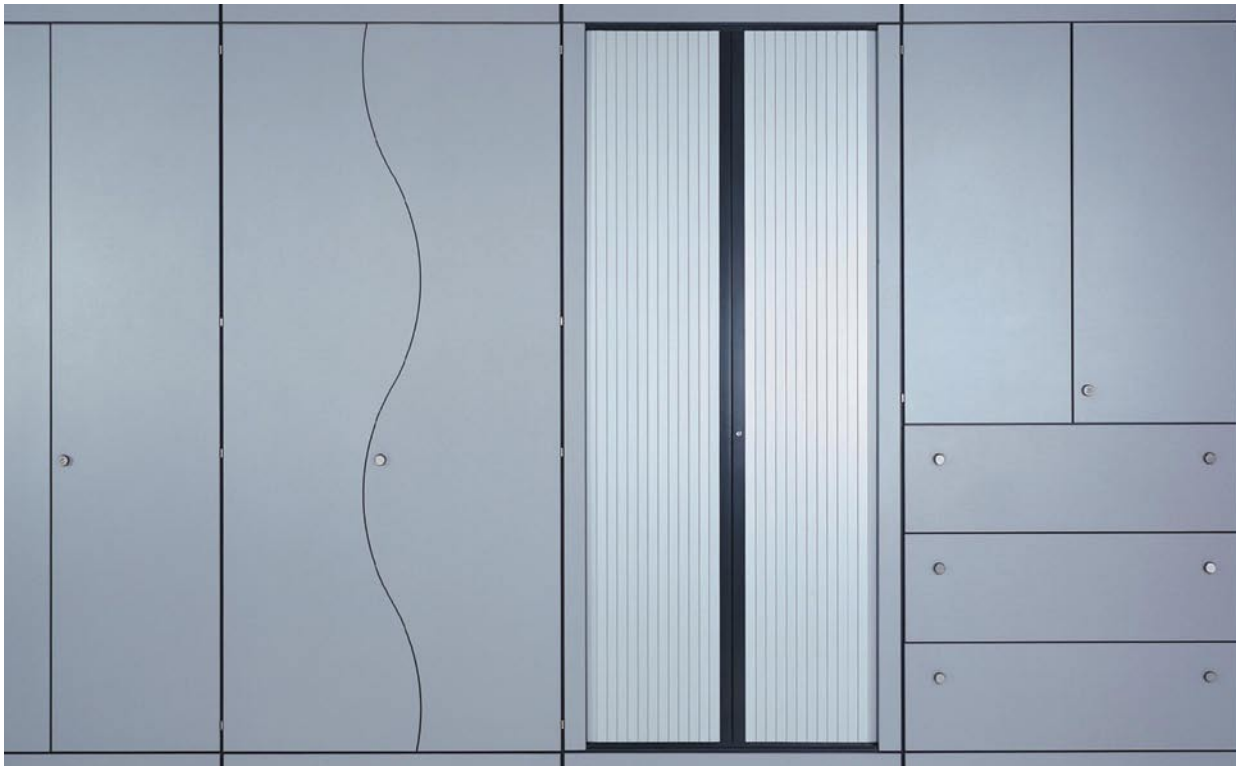
## Versatile materials tailored to your exact specification

To round off the perfect impression, the units can be manufactured in a range of finishes including real wood veneer, laminate, glass and mfc.

We are also able to offer large format graphics, for a truly bespoke addition to your office.







The Storage wall system is capable of meeting the toughest demands of today's working environments through:

**Flexible design**

**Versatile materials**

**Durable fittings and components**

Storage wall allows designers the freedom to create units that reflect the style of the company or environment. The mix of modern manufacturing techniques and new materials enhance the design opportunities such as waves and curved walls.





## Storage wall... offering premium features as standard

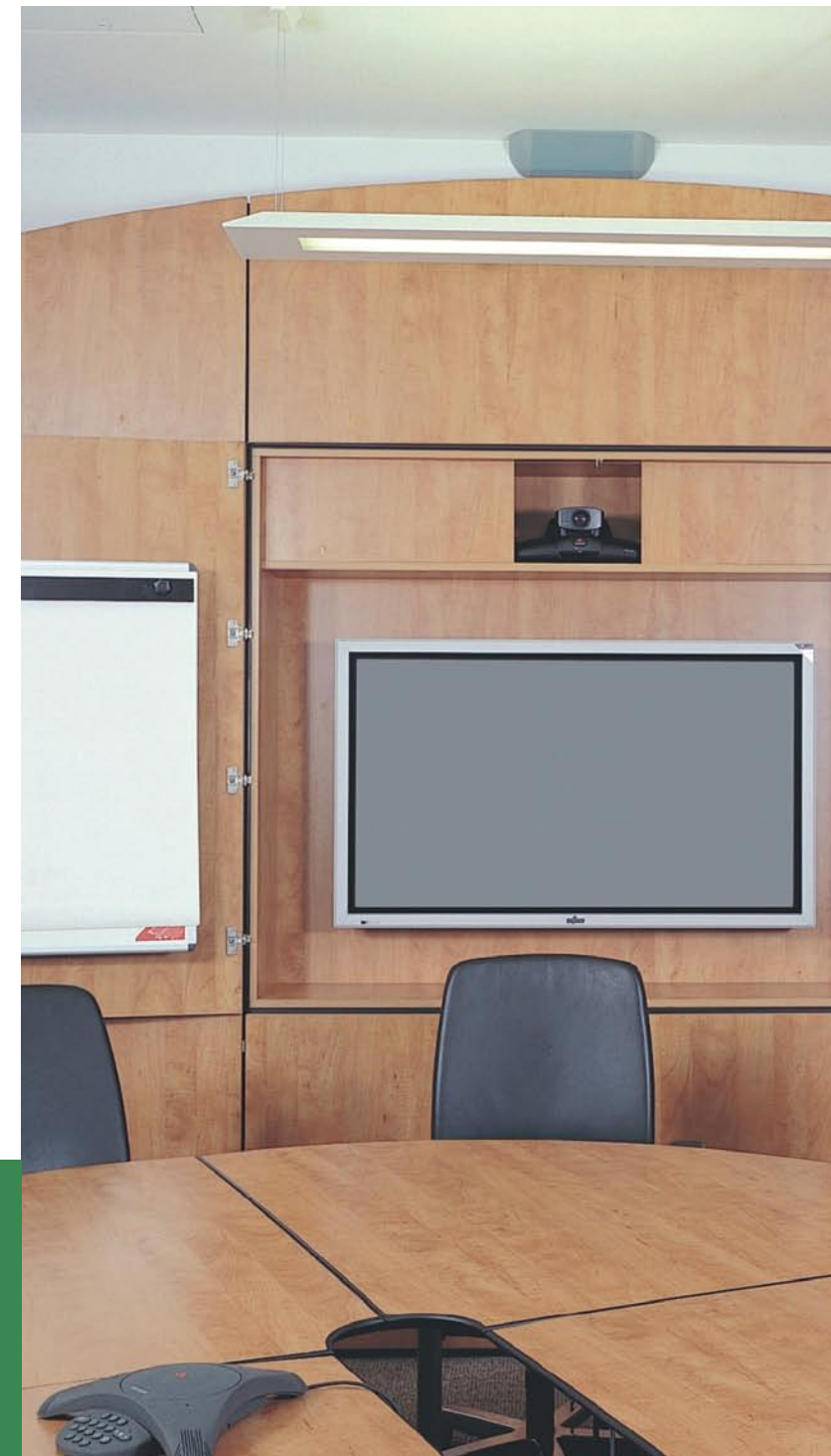
Storage wall represents fantastic value for money offering many premium features as standard:

- Soft seal edging reducing both noise and dust penetration
- Adjustable levellers to increase stability, reduce point loads and minimise the transmission of noise above or below the unit
- Threaded structural fixings to enable the unit to be dismantled and relocated as many times as you require
- 22mm thick panels offering unrivalled strength, stability and durability
- 180 degree opening hinges on all doors allowing them to be completely folded back to minimise the risk of damage or collision in busy areas
- Secure three point espagnolette locking mechanisms with locks having numbered cores that can be removed and changed



## Storage wall - audio visual wall

Storage wall can also be transformed into an audio visual wall allowing complete integration with the latest technology.





## Storage wall

Storage wall can be manufactured in a wide choice of finishes.

We offer bold colours, modern and traditional wood grains, in both melamine and laminate surfaces.

Natural real wood veneers are available and with the ability to stain and tint, we ensure that Storage wall can be tailored to meet our customers' exact requirements.

## Storage wall

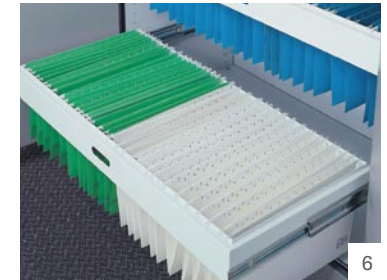
Storage wall is individually designed and manufactured to maximise available space by fitting from floor to ceiling and wall to wall.

By using the wide range of standard modules including 3 depth and 6 width options, storage wall can be installed anywhere to significantly enhance storage capacity.

Storage wall's unique combination of modular space planning footprints and purpose made units guaranteed to provide the optimum storage solution to satisfy each project's individual needs.

## Options, options, options...

Storage wall offers an almost infinite range of storage options



1. free standing dividers
2. garment rails
3. suspended dividers
4. combination shelf
5. anti-tilt fitting frame
6. standard filing frame
7. drop in bin
8. compartment drawers
9. cd drawer
10. roll out reference shelf
11. shallow slotted drawer



# HTM-71 shelving

Hospital Technical Memorandum 71 sets the definitive standard for hospital shelving and the HTM-71 shelving system builds on that standard, taking hospital shelving to new levels of excellence.

Constructed specifically to accommodate medical trays, and with a high load capacity of up to 120kg per shelf, the HTM-71 shelving system is robust enough to exceed the requirements of today's demanding medical environments.

The robust stainless steel shelving is designed for easy cleaning and maintenance. It is also possible to coat the entire system in an antibacterial agent if required.

A unique feature of the HTM-71 shelving system is that the entire shelving system can be placed on to mobile shelving bays, allowing either double the storage capacity or half the storage footprint, compared to traditional shelving systems.

HTM-71 is available in powder coated CR4 or stainless steel.





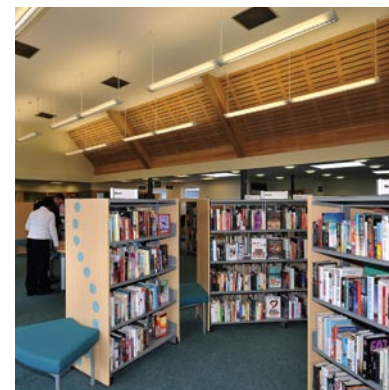


## Steel cantilever shelving

Reflection is a traditional cantilever shelving system proven to be cost-effective and robust across thousands of libraries.

Fully compatible with the original Reska shelving, Reflection is an extremely versatile shelving system ideal for both academic and public libraries.

An almost limitless range of design based end panels is also available to ensure that whatever your requirement, we will have an option to suit you.



## Optional end panels





## Latitude shelving

The Latitude shelving system, designed and manufactured in the UK, is set to become a firm favourite with designers and architects.

With the ability to customise components and accessories to fit the clients' needs precisely, this system is cost effective and brings a touch of finesse to both traditional and contemporary interiors. This versatile but affordable shelving system can be designed with maximum flexibility. Latitude is particularly suited to areas where space is limited and presence is required.







## Wooden shelving

The Libris shelving system is a real wood veneer or mfc based system that offers the flexibility of both wooden and metal shelves depending on budget.

### All wood

With wooden shelves, Libris Timber is an all wood system.

### Wood / Steel

Where budgets are more restricted, the wooden shelves can be replaced with steel which can result in significant cost savings.

Both Libris Timber and Libris Steel are durable, represent great value for money and are ideal for use in areas where image is important.

Standard finishes include: beech, oak, maple, ash and cherry. Other wood finishes are also available.



## Optional end panels

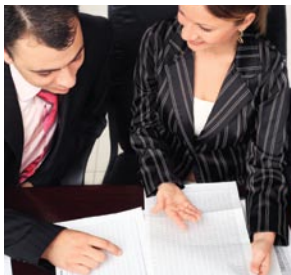




## Ask the experts

### Commissioning your ideal storage solution need not be a daunting task

- With our unique, no obligation six step design service we will guide you seamlessly and effortlessly from concept to installation.
- Our experience and commitment ensures unparalleled levels of service and attention to detail from our initial consultation to the complete installation.
- Whatever level of service you require and whatever the scale of your project, we are on hand to guide you through every step.



#### Step one

An experienced consultant will visit you to understand your specific needs, what you need to achieve, the type of product you require and also to survey the relevant area.



#### Step four

Our designers can create 3-D photo-real imagery of our concepts, bridging the gap from concept to creation and aiding any internal approvals which may need to be gained.



#### Step two

Our consultants will then liaise with our team of dedicated designers to ensure that your brief is effectively communicated and accurately translated.



#### Step five

Our team of engineers will now turn your concept into reality, using traditional skills and the latest technology to ensure the highest levels of quality.



#### Step three

Our consultant will now present our concept to ensure that we have accurately translated the brief and to take on board any tweaks, amendments or suggestions.



#### Step six

Our experienced teams will now install the finished product, taking care to ensure that the whole process is as seamless and hassle free as possible.

## Environmental commitment...

**Sustainable development has always been an integral part of our design process.**

We are committed to creating a better environment, through:

- The strategic planning of our business
- By continually reviewing and improving our activities, products and services.

### Sourcing of materials

Wherever possible we aim to manufacture products using recyclable materials and/or materials which have a valid chain of custody certification.

### Efficient production and installation

We strive to minimise all energy usage wherever possible and constantly review all of our practices to reduce, reuse and recycle our waste wherever possible. Our manufacturing complies with ISO 14001: 2004. We utilise minimal packaging ensuring minimal wastage. All pallets are returned to the factory for re-use. Waste steel is recycled. Wood off-cuts are used in our certified carbon neutral wood burner.

### Greater longevity

Modular designs minimise wastage, provide cost-effective solutions and facilitate the refurbishment and maintenance of our products. Wherever possible we ensure that our products are fully relocatable.

### Cradle to the grave...

All of our mobile storage solutions are manufactured from recyclable materials wherever possible.





## Finishes – choose the options which suit you

We offer a wide choice of finishes. Bold colours, modern and traditional wood grains, laminate surfaces and natural real wood veneers combined with the ability to stain and tint are available to meet our customers exact requirements. If you cannot find what you are looking for, please contact us and we will manufacture a solution to your exact specifications.

### mfc finishes

Available for Storage wall and as décor ends, veneers and laminates are also available. Please contact us for more information.

### metal finishes

We are able to supply all of our range in RAL colours. The standard finish is RAL 9002.



also available as options  
in laminate and mfc



**Storage Essentials Limited**  
SEL House, 139 West Street  
Dunstable, Bedfordshire, LU6 1SG.

**Tel:** 0800 804 8484 **Fax:** 0871 431 0555  
**Email:** [info@storageessentials.co.uk](mailto:info@storageessentials.co.uk)  
**Web:** [www.storageessentials.co.uk](http://www.storageessentials.co.uk)