

Exquip Reu-GmbH, Auf dem Knuf 10

D-59073 HAMM, Germany

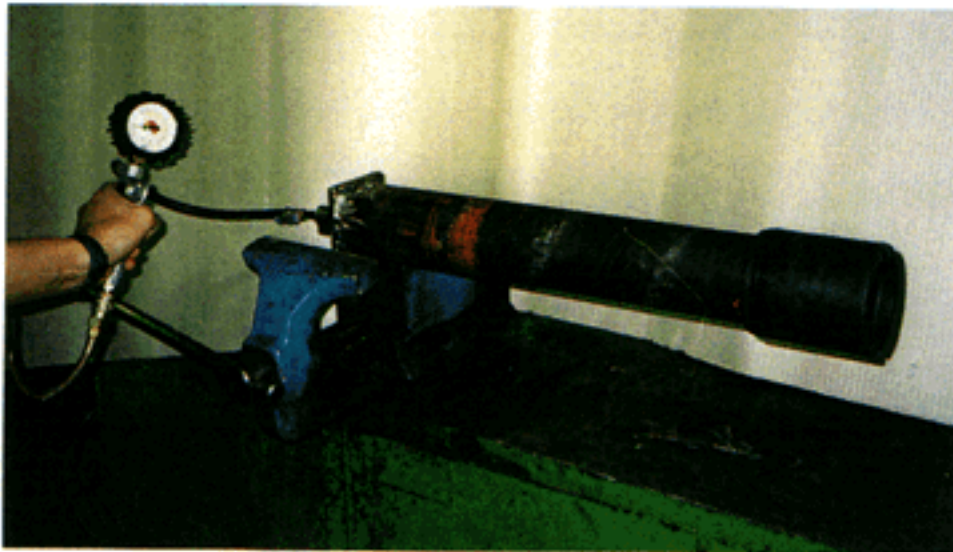
Telephone (0)2381-62266 // Telefax (0)2381-66787

Exquip

THREAD PROTECTORS

Date: 23.05.1995

PROTECTOR TEST DATA SHEET INTERNAL PRESSURE TEST



Type of protector: 3 1/2" NEW VAM, pin end , closed end
nominal weight of joint=10,20 lb/ft

Requirements: Five cycles between ambient pressure and 50kPa,
the internal pressure level has to stay at 50kPa for
five minutes .

Tests at room temperature , the protector has to be installed
with storage compound and screwed on with 3 mkp torque .

Results: The test was done with 200kPa (2bar) .
The protector held this pressure for five days .

Test engineer signature