

# -LINE

## DECORATIVE INTERIOR CLADDING FOR WALLS & CEILING

EASY FIT



EASY CLEAN



NO GROUTING



MAINTENANCE

FREE



ACCESSORIES



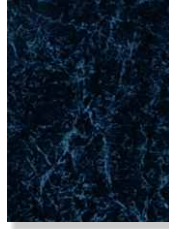
WIDE COLOUR

RANGE



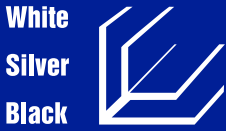
COST

EFFECTIVE



## ACCESSORIES

### Internal Corner



### External Corner



### Starter Trim



### Coving



### H-Trim



### Clad Seal



### Infill Trim



# Marbles

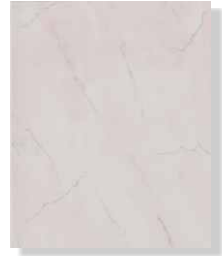
A CLASSIC MARBLE EFFECT AVAILABLE IN 6 SHADES



GREY



BLUE



PINK



BEIGE



ROSE



GREEN

# Colours

A VARIETY OF COLOURS AND FINISHES FOR ALL TASTES



JADE



OCEAN BLUE



TOPAZ



BLUE CRYSTAL



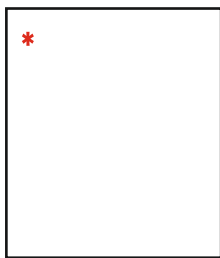
AMBER



AQUA MARINE

ALL PANELS ARE 10mm THICK, 250mm WIDE AND 2.7m LONG  
AVAILABLE IN PACKS OF 5. \*ALSO AVAILABLE IN 5.8m LENGTH

# Black & White



**SHINY WHITE**



**WHITE ASH**



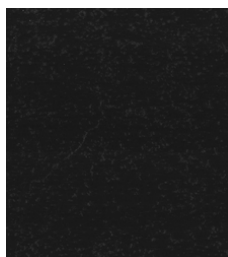
**RANDOM BLACK**



**SILVER BLACK**

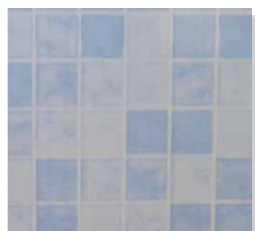


**BLACK ASH**

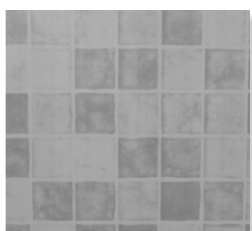


**BLACK PEARL**

# Mosaics



**BLUE MOSAIC**



**GREY MOSAIC**

# Metallic



**BRUSHED STEEL**



**SILVER BLACK**

**ALL PANELS ARE 10mm THICK, 250mm WIDE AND 2.7m LONG  
AVAILABLE IN PACKS OF 5. \*ALSO AVAILABLE IN 5.8m LENGTH**

## ACCESSORIES

### Internal Corner

White  
Silver  
Black



### External Corner

White  
Silver  
Black



### Starter Trim

White  
Silver  
Black



### Coving

White  
Silver



### H-Trim

White  
Silver  
Black



### Clad Seal

White



### Infill Trim

Silver  
Gold



## ACCESSORIES

### Internal Corner



### External Corner



### Starter Trim



### Coving



### H-Trim



### Clad Seal



### Infill Trim



# E-Line

AN ECONOMIC RANGE OF 5mm THICK, 2.6m LONG PANELS



**BRIGHT WHITE**



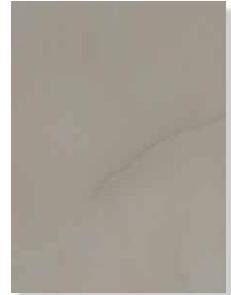
**BLACK NIGHT**



**DESSERT SAND**



**CLOUDY**



**BLUSH**

# Wall Panels

#### COVERAGE

Each pack contains 5 panels

#### MAINTENANCE

Use hot soapy water and a soft cloth or sponge NOT SOLVENTS or ABRASIVES

#### USAGE

Our panels are for internal use only

#### PREPARATION

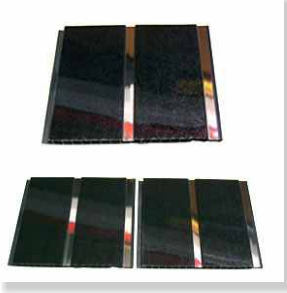
All panels should be inspected before fitting. Colours may vary slightly from batch to batch

# C-Line Silver

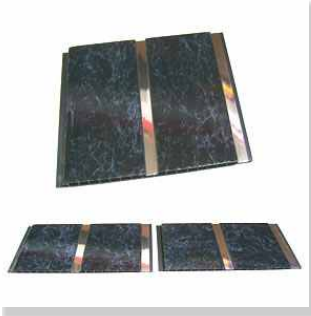
INCORPORATING AN INTEGRAL SILVER STRIP



**C-LINE WHITE**



**C-LINE BLACK PEARL**



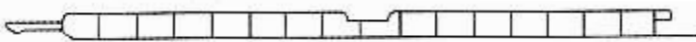
**C-LINE RANDOM BLACK**



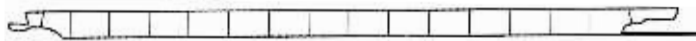
**C-LINE WHITE ASH**

## Ceiling Panels

**Ceiling plank with Silver Highlights  
250mm wide x 10mm thick**



**Ceiling plank with no Silver Highlights  
and all wall panels 250mm x 10mm thick**



Tongue and groove jointing system makes fitting simple. For ceiling mounting, screws should be fitted every 30 - 50cm to existing ceiling or pre fitted battens.

Down lighters can also be fitted as long as panels are not heated beyond 60°C

## ACCESSORIES

### Internal Corner

White  
Only



### External Corner

White



### Starter Trim

White



### Infill Trim

Silver  
Only



# ACCESSORIES

## Internal Corner

- White
- Black
- Silver



## External Corner

- White
- Black
- Silver



## Starter Trim

- White
- Black
- Silver



## Clad Seal

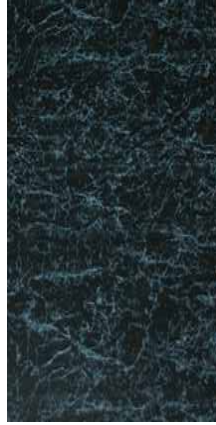
- White



# Aquaclad

**WATERPROOF, READY TO FIT PANELS, IDEAL FOR  
SHOWER ENCLOSURE AND ALSO BATHROOM WALLS**

**1000mm WIDE PANEL • 10mm THICK • 2400mm LONG**



**RANDOM**



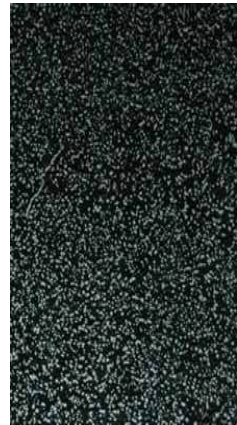
**GREY**



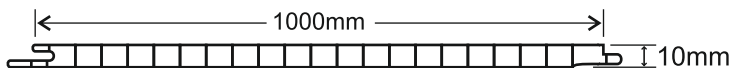
**NATURAL STONE**



**GLOSS WHITE**



**BLACK PEARL**



# Aqua-Clad

1000mm PVC Panelling

**EASY FIT**



**EASY CLEAN**



**NO GROUTING**



**MAINTENANCE**

**FREE**



**ACCESSORIES**



**WIDE COLOUR**

**RANGE**



**COST**

**EFFECTIVE**



**Pearl**

**Stone**

**White**

**Random**

**Grey**

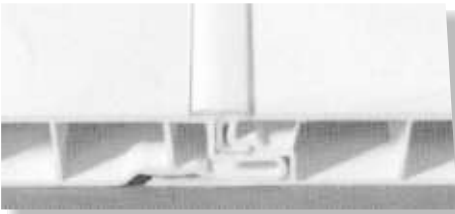
# Installation

The panels can be glued to the wall if the wall offers a flat surface. The background should be dry and in good condition. The panels can also be fixed using wooden battens.

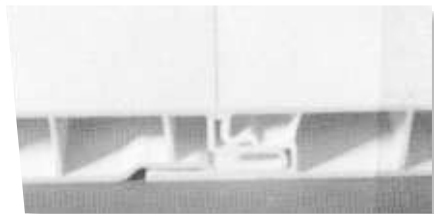
It is recommended that in rooms with humid conditions treated timber and stainless fixings be used. Screws, pins or staples can be used.

Battens should be fitted approximately 30cm apart. For horizontal panelling, battens should be fitted vertically, and for vertical panelling, battens should be fitted horizontally.

The panels are interlocking. Start by cutting to the height required the initial edging or corner profile and then fix this to the wall (or ceiling). The first wall panel is also cut to height and fixed into place leaving the trailing edge to be fixed to the batten, ready for the next panel. The final panel will need to be cut with approximately 3mm of play to enable it to be fixed and fitted to the penultimate panel. We recommend checking the vertical as you progress with either a spirit level or plumb line. If using battens then insulation can be further improved by installing extra insulation material between the wall and the panel.



**AN INFILL IS USED**



**A FLUSH EFFECT**

Normal cleaning products and a soft cloth or sponge should be used. Never use abrasive products for cleaning.

We advise that all panels should be visually inspected prior to fitting. Colours may vary slightly from batch to batch.