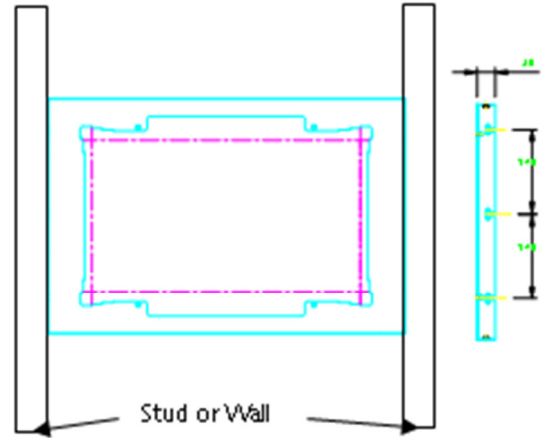


Bespoke Glass Bezel & LCD Installation

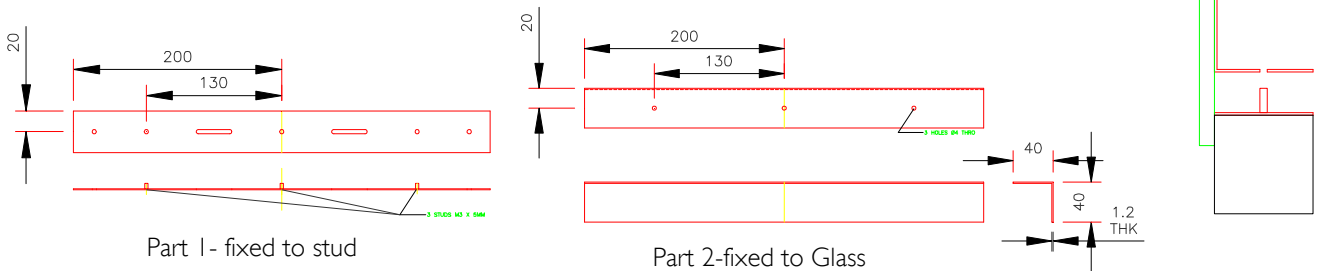


Screen size in inches.	Aquavision stock reference.	Chassis Drawing Ref.	Chassis mount size. Width Height	LCD Width Height Depth	Viewing window size. Width Height	Bezel Depth
19" L 16:9	AVF19L-4	1120-119	500 x 350	430 x 280 x 68	410 x 230	30
26" 16:9	AVF26L-4HD	1110-119	690 x 472	630 x 376 x 85	575.8 x 323.7	30
32" 16:9	AVF32L-4HD	1103-119	883 x 577	763 x 453 x 94	697 x 392	30
40" 16:9	AVF40L-4HD	1102-119	1095 x 691	955 x 555 x 100	885 x 498	30

Installing your Aquavision[®] bespoke couldn't be easier. Your glass should have been supplied with the metal screen mount bezel attached. This also has 3 fixings down each side of it spaced 140mm apart from the centre line as shown above. You will need to have a good wall or strong stud to the left and right of the bezel to support it. You will then need to provide 6 fixings, 3 either side, at 140 centres and 18mm in from the back of the glass. Fixings can be normal screws tightened into Rawlplugs or similar but leaving around 3-5mm of thread showing for the bezel to drop onto. When working out the height of these fixings remember that the glass will drop by 7-8mm dependant on the fixing size. Once this is done, it would be a good idea to check that the glass fits before you mount the LCD Screen to the bezel. Once you have confirmed that the fixings are in the right place, lay the glass down on its front and screw the LCD screen on to it carefully making sure you don't over tighten the screws causing them to damage the glass.

Connect the TV to the various power and input connections and then drop onto the brackets that you fitted earlier. It would be a good idea to power the system up and check all connections etc. Once you are happy all is working, run a bead of silicone around all sides of the glass ensuring a watertight fit. Remember, if any connections come out, or the screen develops a fault, you will need to remove this silicone so bear this in mind when you are applying it!

If your glass is larger than the bezel by 1 meter in any direction, we advise that secondary fixing kits are used. One of these is recommended for each meter the glass is, in any direction, bigger than the bezel. These are as shown on the left and should be fixed to a strong stud or wall, and on a similar position on the back of the glass. Details of these brackets are as shown.



aquavision.tv

Aquavision[®] Distribution Limited

Unit 7 Riverpark Industrial Estate
Billet Lane, Berkhamsted, Herts.
HP4 1HL
United Kingdom

registered in England & Wales 07756677

telephone
+44 (0)1442 872665

general enquiries
info@aquavision.tv

technical support
technical@aquavision.tv



2 Year UK Warranty
upgradeable to 5 years in home service