

MV-6 Series

Manual PTFE Ball Valve

aerospace
climate control
electromechanical
filtration
fluid & gas handling
hydraulics
pneumatics
process control
sealing & shielding

Product Overview:

The MV-6 Series is designed for semiconductor, ultra-pure water and aggressive chemical applications.

The MV-6 Series have wetted components that are made entirely of PTFE for superior chemical resistance and which also provides long life span. All valves have a full port design and a 1/4 turn operation with a low torque tee handle.



Contact Information:

Parker Hannifin Corporation
Veriflo Division

Partek Operation

7075 East Southpoint Road
Tucson, Arizona 85756

phone 520 574 2600
fax 520 574 2700

www.parker.com/partek

Product Features:

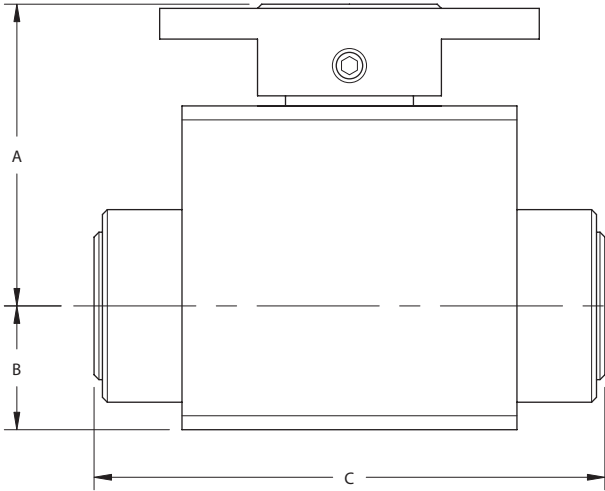
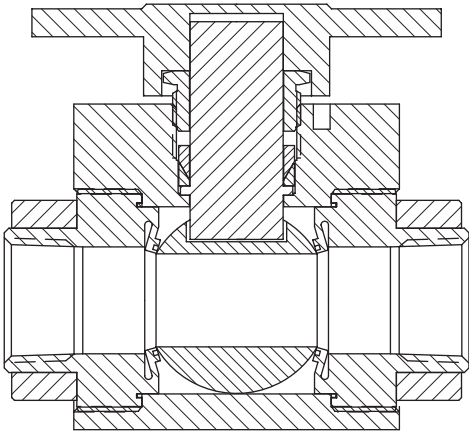
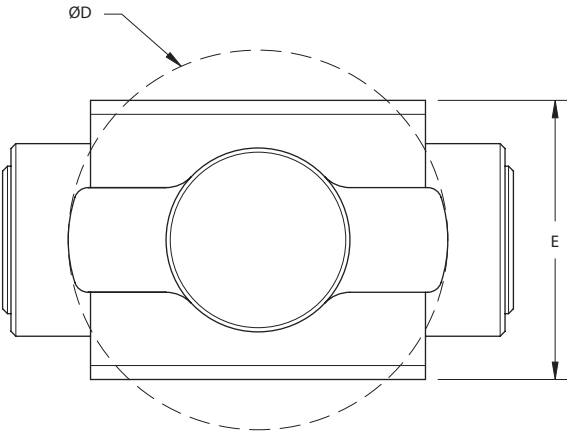
- Floating ball design without o-rings ensures bubble tight sealing at high pressures.
 - Bidirectional flow to 120 psi for liquid applications provide a high cycle life.
 - Panel mounting option is available for all sizes
- which is ideal for process instrumentation applications.
- Minimal torque operation is ideal for quick shut off when required contamination free applications.



ENGINEERING YOUR SUCCESS.

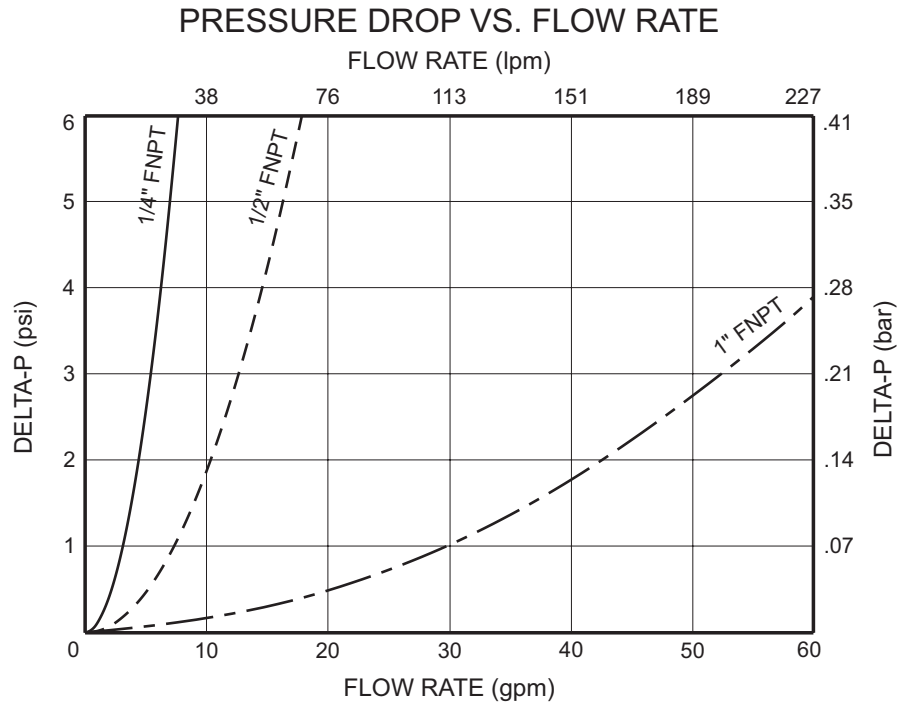
MV-6 Series

Dimensional Drawing



MV-6 Series

Flow Curves



Ordering Information

Model Number	Operation	End Size	End Type	A		B		C		D		E	
				inch	mm	inch	mm	inch	mm	inch	mm	inch	mm
MV-6-1414-0	1/4 TURN	1/4"	FNPT	1.73	43.94	.66	16.76	2.91	73.91	1.98	50.29	1.31	33.27
MV-6-1818-0	1/4 TURN	1/2"	FNPT	2.24	56.89	.89	22.60	3.72	94.49	2.72	69.08	2.00	50.80
MV-6-116116-0	1/4 TURN	1"	FNPT	3.18	80.77	1.39	35.50	5.00	127.00	4.40	111.76	2.53	64.26

MV-6 Series

Specifications

Materials of Construction

Wetted Options	PTFE
Non-wetted Options	HDPE, PVDF, PVC

Pressure Ranges

Ranges	27" HG vacuum (913 mbar) - 120 PSIG (8.3 bar)
--------	--

Pressure ranges for operation at ambient temperatures. For additional information on materials of construction, functional performance and operating conditions, please contact factory.

Temperature Ranges

Ambient	-60° - 176° F (-51° - 80° C)
Fluid	-60° - 400° F (-51° - 204° C)

Flow Capacity

MV-6-1414-0	C _v 1.88
MV-6-1818-0	C _v 6.59
MV-6-116116-0	C _v 28.06

OFFER OF SALE:

The items described in this document are hereby offered for sale by Parker-Hannifin Corporation, its subsidiaries or its authorized distributors. This offer and its acceptance are governed by the provisions stated in the detailed "Offer of Sale" elsewhere in this document or available at www.parker.com/veriflo

WARNING USER RESPONSIBILITY

FAILURE OR IMPROPER SELECTION OR IMPROPER USE OF THE PRODUCTS DESCRIBED HEREIN OR RELATED ITEMS CAN CAUSE DEATH, PERSONAL INJURY AND PROPERTY DAMAGE. THIS DOCUMENT IS FOR REFERENCE ONLY. PLEASE CONSULT FACTORY FOR LATEST PRODUCT DRAWINGS AND SPECIFICATIONS

This document and other information from Parker-Hannifin Corporation, its subsidiaries and authorized distributors provide product or system options for further investigation by users having technical expertise.

The user, through its own analysis and testing, is solely responsible for making the final selection of the system and components and assuring that all performance, endurance, maintenance, safety and warning requirements of the application are met. The user must analyze all aspects of the application, follow applicable industry standards, and follow the information concerning the product in the current product catalog and in any other materials provided from Parker or its subsidiaries or authorized distributors.

To the extent that Parker or its subsidiaries or authorized distributors provide component or system options based upon data or specifications provided by the user, the user is responsible for determining that such data and specifications are suitable and sufficient for all applications and reasonably foreseeable uses of the components or systems.

