

- Two knives
- Special shaped V-rotor
- For abrasive applications
- Solid construction
- Versions conforming to ATEX 94/9/EC available



MS

## MS Knife Valves

Besides the well known rotary valves and diverter valves, DMN-WESTINGHOUSE has now incorporated MS Knife Valves into their program. These large valves are suitable for applications in various industries for handling products, such as wood chips and fine minerals.

DMN Knife Valves are equipped with both an upper and lower cutter blade, which ensure that the valves do not jam or seize due to the particle size. The V-shaped 10 pocket rotor provides a strong shearing action as the blade enters the bore, which helps the cutting action in many applications. The valves can be used for charging and discharging into dryers in the particleboard industry, woodchips in the biomass power industry, the minerals industry (cement, mineral processing and recycling), metal industry (extraction systems) and power stations. Some valve types are available conforming to ATEX Directive 94/9/EC and can therefore be used in protective systems.

## Product information

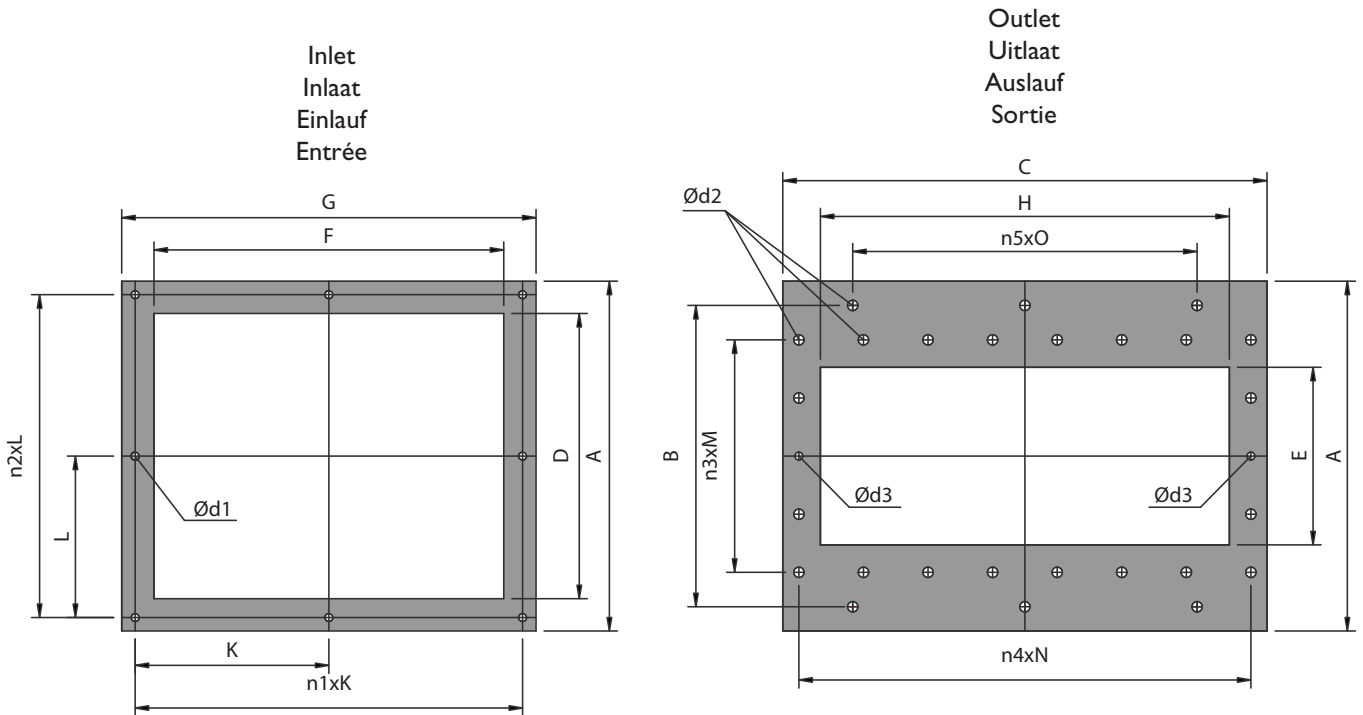
The wear resistant rotor tips in combination with the chrome plated housing makes the valves very suitable for abrasive applications. The upper cutter blade is easily accessible which makes adjustment very easy and convenient.

The MS valves are available in 12 sizes from 58 to 940 liters at 100 % filling efficiency, and rotor diameters vary between 500 and 1000 mm. The valves are suitable for pressures up to 0,8 bar and a product temperature up to 150 °C.

As standard these valves are directly driven, other drives are available on request.

An air purge seal is optionally available.

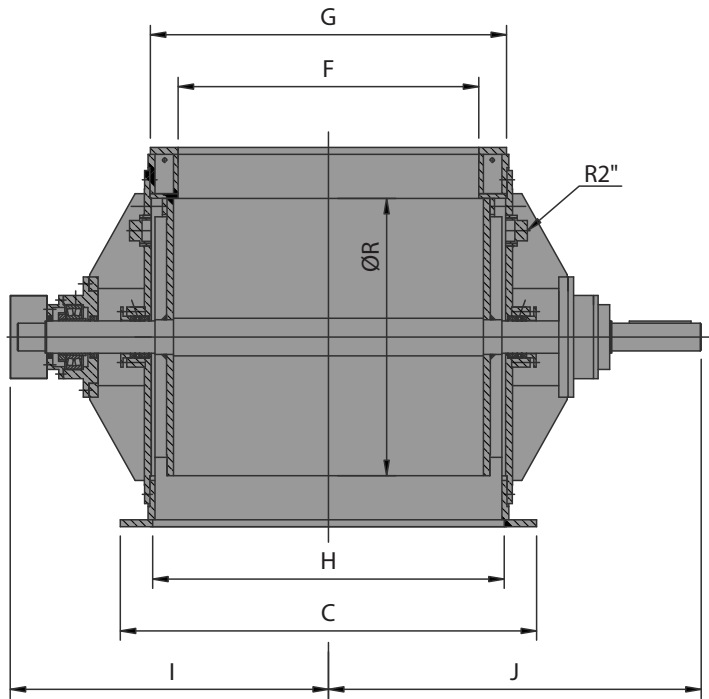
Dimensions MS flanges  
 Maatschets MS flenzen  
 Maßskizze MS flanschen  
 Dimensions d'écluse MS brides



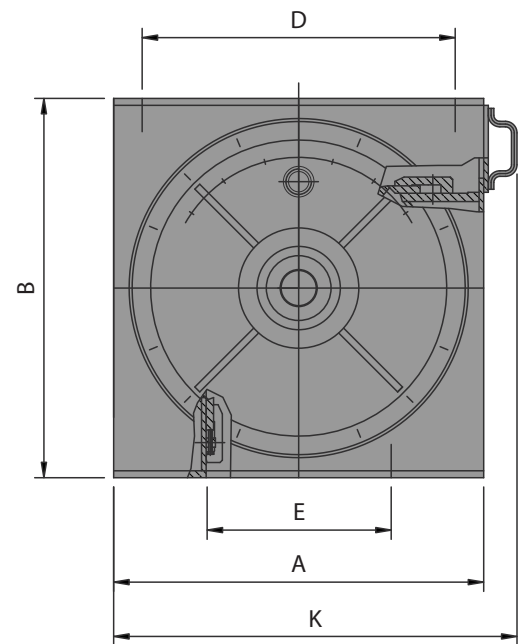
Type	A	B	C	D	E	F	G	H	n1xK	n2xL	n3xM	n4xN	n5xO	Ød1	Ød2	Ød3
MS 050-390	650	560	640	530	330	390	510	500	2x230	2x300	4x108	5x120	2x200	M16	19	M16
MS 050-650	650	560	900	530	330	650	770	760	2x360	2x300	4x108	7x120	2x320	M16	19	M16
MS 060-650	800	700	900	680	400	650	770	760	2x360	2x370	4x130	7x120	2x320	M16	19	M16
MS 060-760	800	700	1000	680	400	760	900	900	2x420	2x370	4x130	9x110	3x220	M16	19	M16
MS 070-650	930	760	900	810	450	650	770	760	2x360	2x440	4x140	7x120	2x320	M16	19	M16
MS 070-760	930	760	1060	810	450	760	900	900	2x420	2x440	4x140	9x110	3x220	M16	19	M16
MS 070-1030	950	760	1320	810	450	1030	1170	1160	3x370	2x440	4x140	11x115	3x320	M16	19	M16
MS 080-760	1110	1000	1120	910	610	760	920	900	4x210	4x250	4x180	9x115	3x220	M16	23	M20
MS 080-1030	1110	1000	1380	910	610	1030	1190	1160	4x280	4x250	4x180	11x117	4x260	M16	23	M20
MS 080-1320	1110	1000	1670	910	610	1320	1480	1450	5x280	4x250	4x180	13x124	3x440	M16	23	M20
MS 100-1030	1300	1200	1380	1100	810	1030	1190	1180	4x280	4x300	6x160	11x117	4x260	M16	23	M20
MS 100-1320	1300	1200	1670	1100	810	1320	1480	1450	5x280	4x300	6x160	13x124	3x440	M16	23	M20

Technical modifications are possible, dimensions in mm.  
 Technische wijzigingen voorbehouden, maten in mm.  
 Technische Änderungen vorbehalten, Maße in mm.  
 Changements d'exécutions techniques réservés, dimensions en mm.  
 Son posibles variaciones técnicas, dimensiones en mm.  
 Sono possibili variazioni tecniche, dimensioni in mm.

Dimensions MS  
 Maatschets MS  
 Maßskizze MS  
 Dimensions d'écluse MS



For flange detail see drawing  
 "Dimensions MS flanges"



Type	Ltr/rev	A	B	C	D	E	F	G	H	I	J	K	ØR
MS 050-390	58	650	710	640	530	330	390	510	500	550	685	725	500
MS 050-650	102	650	710	900	530	330	650	770	760	680	815	725	500
MS 060-650	176	800	820	900	680	400	650	770	760	700	850	875	600
MS 060-760	205	800	820	1000	680	400	760	900	900	765	915	875	600
MS 070-650	248	930	930	900	810	450	650	770	760	760	920	1005	700
MS 070-760	302	930	930	1060	810	450	760	900	900	825	975	1005	700
MS 070-1030	386	950	930	1320	810	450	1030	1170	1160	960	1110	1005	700
MS 080-760	398	1110	1110	1120	910	610	760	920	900	850	1070	1185	800
MS 080-1030	460	1110	1110	1380	910	610	1030	1190	1160	985	1205	1185	800
MS 080-1320	588	1110	1110	1670	910	610	1320	1480	1450	1130	1350	1185	800
MS 100-1030	740	1300	1300	1380	1100	810	1030	1190	1180	985	1255	1375	1000
MS 100-1320	940	1300	1300	1670	1100	810	1320	1480	1450	1130	1400	1375	1000

Technical modifications are possible, dimensions in mm.  
 Technische wijzigingen voorbehouden, maten in mm.  
 Technische Änderungen vorbehalten, Maße in mm.  
 Changements d'exécutions techniques réservés, dimensions en mm.  
 Son posibles variaciones técnicas, dimensiones en mm.  
 Sono possibili variazioni tecniche, dimensioni in mm.

## Other DMN-WESTINGHOUSE products:



AL



BL-DAIRY



BL-DMZC



GL



DL



MLD-MALD-MGLD



SAL



AML



OS / GOS



FDV



PTD



GPD



TDV



MTDV



SC

DMN-WESTINGHOUSE have been designing and manufacturing rotary valves, diverter valves and other related components for the bulk solids handling industry for more than 30 years. Offering tailor made solutions for chemical, food, plastics and pharmaceutical industries, DMN-WESTINGHOUSE products are distributed worldwide. Besides an extensive range of standard components, we supply USDA accredited sanitary versions and ATEX approved explosion-proof models. An extensive network of subsidiaries, distributors and representatives ensures a high level of service and support all over the world.

© DMN - HOLLAND - 04/05



[www.dmn.info](http://www.dmn.info)

**Head Office:**  
**DMN Machinefabriek Noordwykerhout BV**  
 PO Box 6, NL - 2210 AA Noordwykerhout, Holland  
 Tel. +31 252 361 800  
 Fax +31 252 375 972/934  
[dmn@dmn-nwh.nl](mailto:dmn@dmn-nwh.nl)

**DMN Incorporated**  
 3895 South Perkins Road, Suite 8  
 Memphis, TN 38118, USA  
 Tel. +1 901 360 1537  
 Fax +1 901 360 0348  
[dmnfo@dmn-inc.com](mailto:dmnfo@dmn-inc.com)

**DMN UK Ltd**  
 Unit 1&2, Harris Road,  
 Porte Marsh Industrial Estate  
 Calne, Wiltshire, SN 11 9PT, UK  
 Tel. +44 1249 818 400  
 Fax +44 1249 818 410  
[dmn@dmnuk.com](mailto:dmn@dmnuk.com)

**DMN Schüttguttechnik GmbH**  
 Rütgersstrasse 8  
 D-21244 Buchholz i.d. Ndh, Germany  
 Tel. +49 4181 931 40  
 Fax +49 4181 931 490  
[dmn@dmn-schuettingtechnik.de](mailto:dmn@dmn-schuettingtechnik.de)

**DMN France SAS**  
 65, rue Charles de Gaulle  
 91330 Yerres, France  
 Tel: +33 1 69 49 85 70  
 Fax: +33 1 69 49 85 79  
[dmnfrance@wanadoo.fr](mailto:dmnfrance@wanadoo.fr)