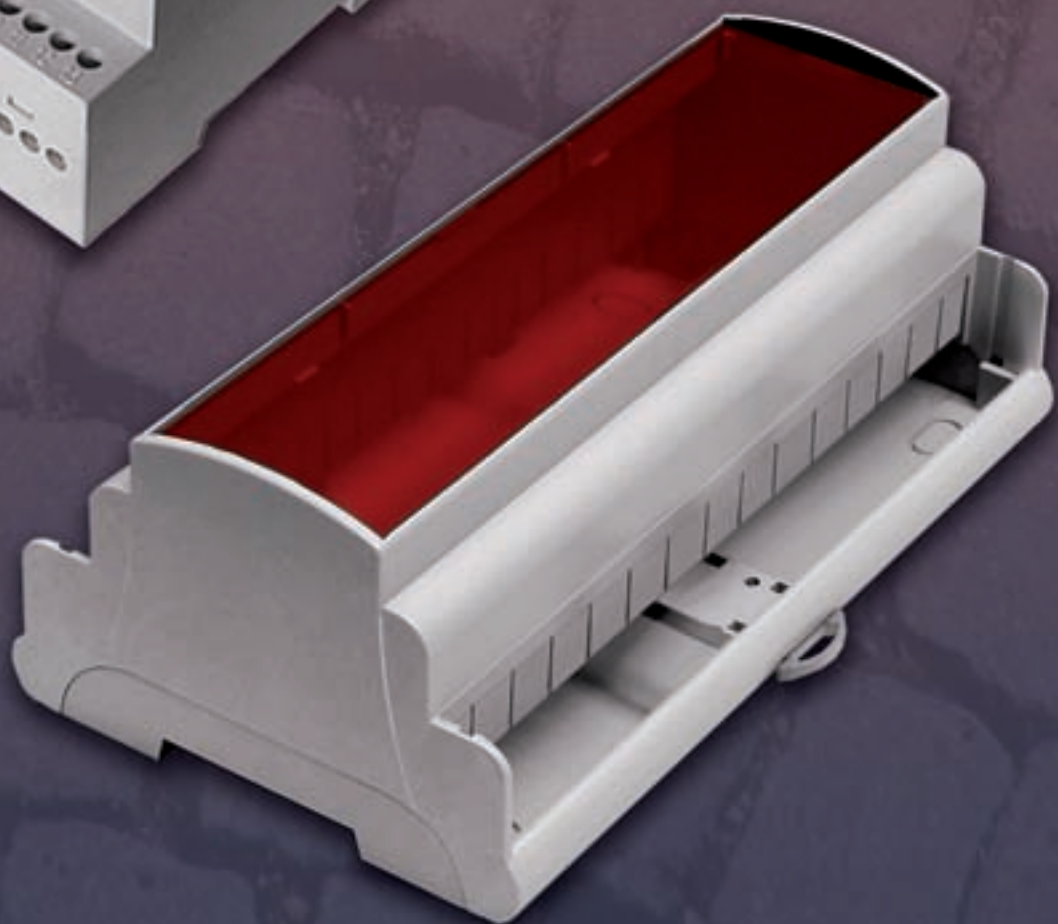
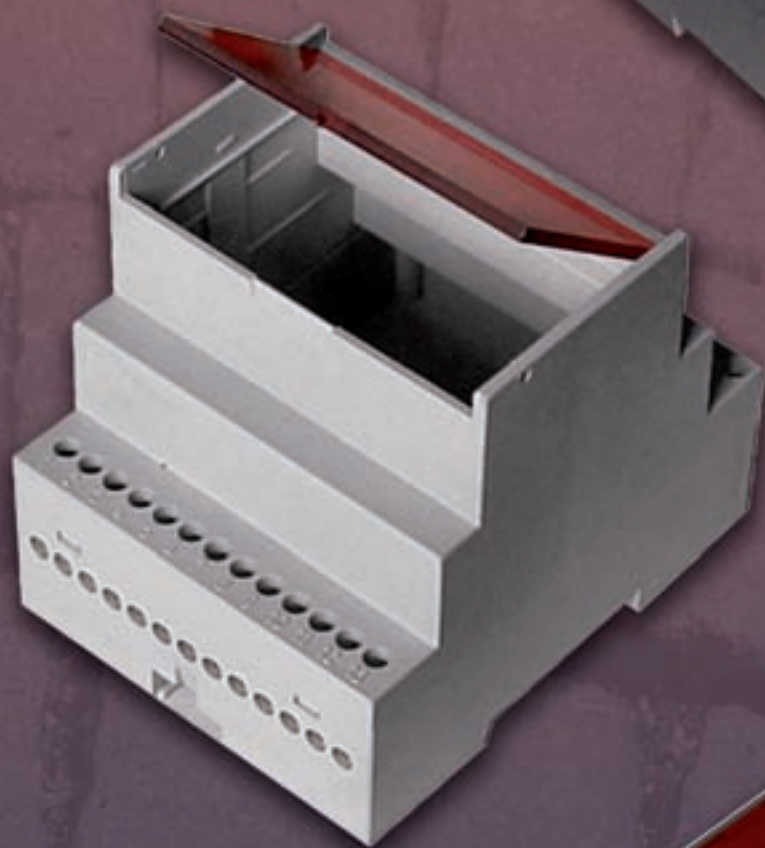
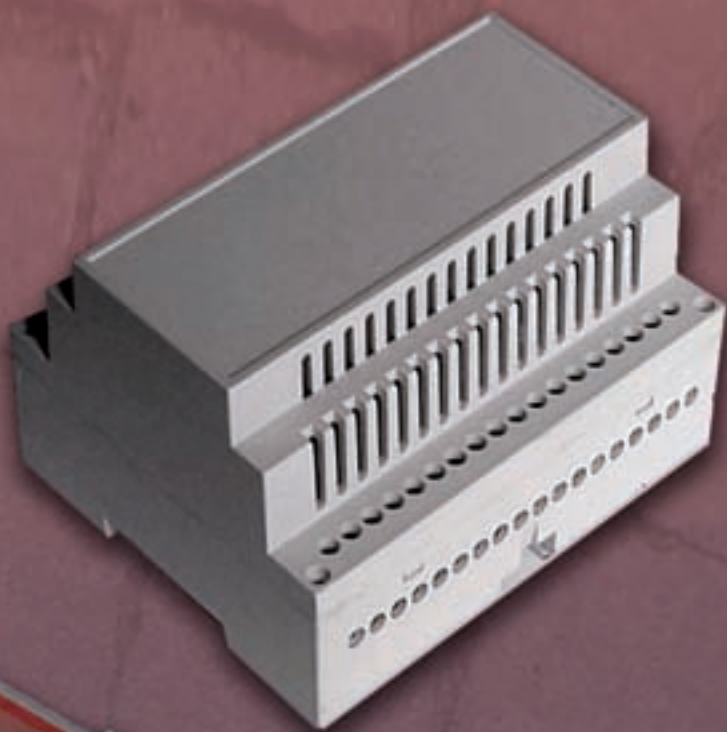


SIMP
EL BAG



MODULAR HOUSINGS - MODULARI

Modular Housing



MR3/K

MODULAR HOUSING MR3/K

Modular Housing, 3 unit, 53 mm long, for mounting on Omega Rail acc. To DIN EN 50022. It is suitable to house analogue and digital instrumentation. Snap-in locking between base and cover. The interconnection area is vented and can be open or covered with the relevant terminal hoses. Custom drilling on any side (windows, holes, slots). Made in Blend PC/ABS class UL94V2 or, on request, in class UL94V0, in RAL7035 grey. **Special colours on request.**

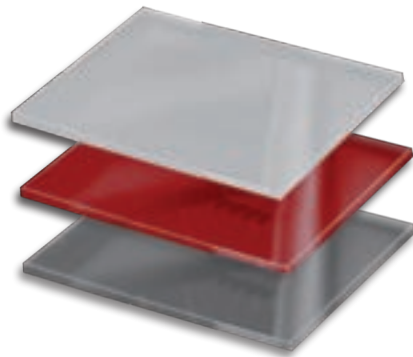
units	1	2	3	4	5	6	9	12
width mm			52.5	70	87.5	105	157.5	

TECHNICAL DRAWINGS ON: www.elbag.net

Grey

Red

Clear



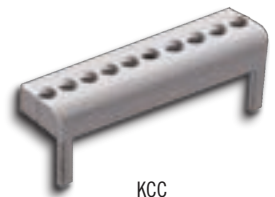
KDS



KFA

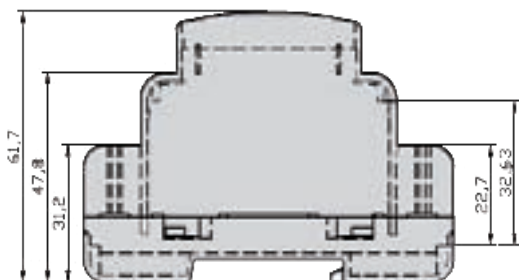


KML



KCC

Dimensions



KAL



KLC

Modular Housing

MODULAR HOUSING MR4/K

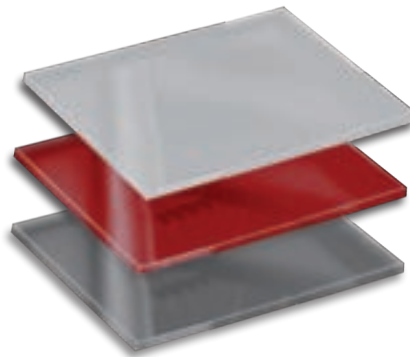
Modular Housing, 4 unit, 70 mm long, for mounting on Omega Rail acc. To DIN EN 50022. It is suitable to house analogue and digital instrumentation. Snap-in locking between base and cover. The interconnection area is vented and can be open or covered with the relevant terminal hoeses. Custom drilling on any side (windows, holes, slots). Made in Blend PC/ABS class UL94V2 or, on request, in class UL94V0, in RAL7035 grey. **Special colours on request.**

units	1	2	3	4	5	6	9	12
width mm			52.5	70	87.5	105	122.5	

TECHNICAL DRAWINGS ON: www.elbag.net



MR4/K



Grey

Red

Clear



KDS



KFA



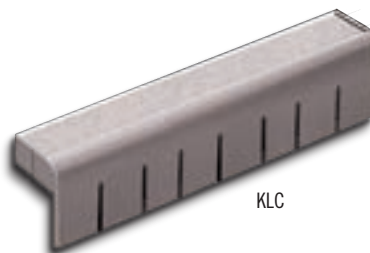
KML



KCC

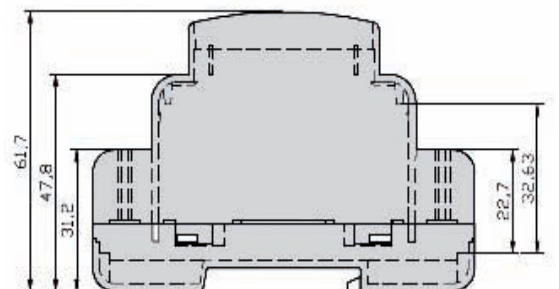


KAL

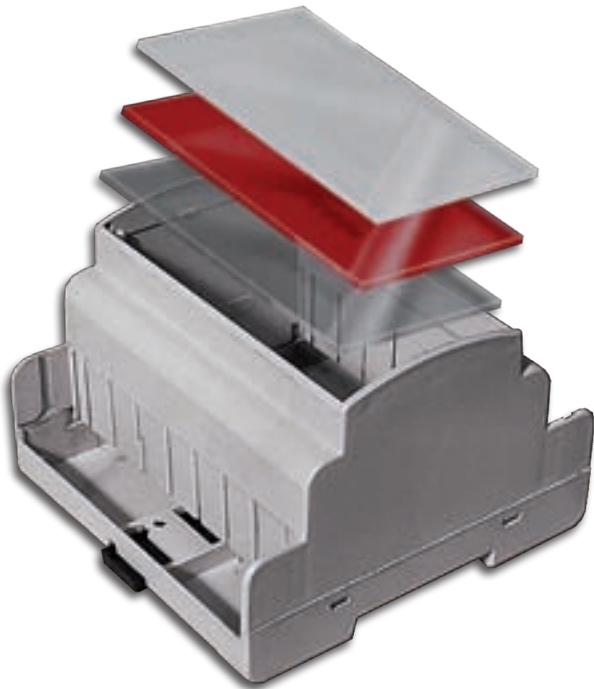


KLC

Dimensions



Modular Housing



MR5/K

MODULAR HOUSING MR5/K

Modular Housing, 5 unit, 87.5 mm long, for mounting on Omega Rail acc. To DIN EN 50022. It is suitable to house analogue and digital instrumentation. Snap-in locking between base and cover. The interconnection area is vented and can be open or covered with the relevant terminal hoses. Custom drilling on any side (windows, holes, slots). Made in Blend PC/ABS class UL94V2 or, on request, in class UL94V0, in RAL7035 grey. **Special colours on request.**

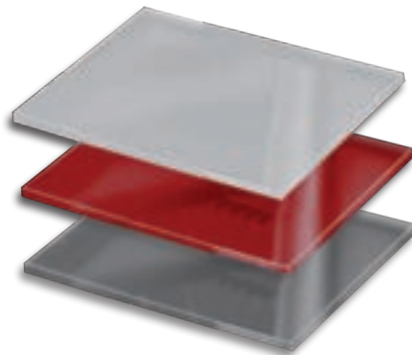
units	1	2	3	4	5	6	9	12
width mm			52.5	70	87.5	105	157.5	

TECHNICAL DRAWINGS ON: www.elbag.net

Grey

Red

Clear



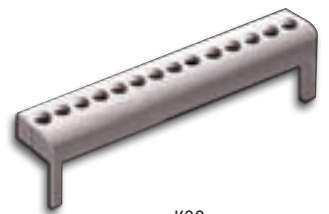
KDS



KFA

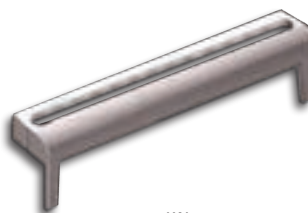
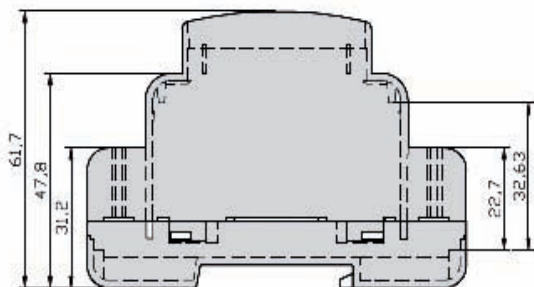


KML



KCC

Dimensions



KAL



KLC

Modular Housing

MODULAR HOUSING MR6/K

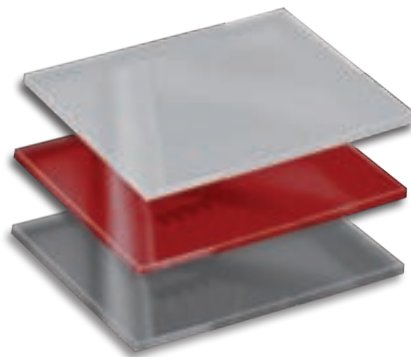
Modular Housing, 6 unit, 105 mm long, for mounting on Omega Rail acc. To DIN EN 50022. It is suitable to house analogue and digital instrumentation. Snap-in locking between base and cover. The interconnection area is vented and can be open or covered with the relevant terminal hoses. Custom drilling on any side (windows, holes, slots). Made in Blend PC/ABS class UL94V2 or, on request, in class UL94V0, in RAL7035 grey. **Special colours on request.**

units	1	2	3	4	5	6	9	12
width mm			52.5	70	87.5	105	157.5	

TECHNICAL DRAWINGS ON: www.elbag.net



MR6/K



Grey

Red

Clear



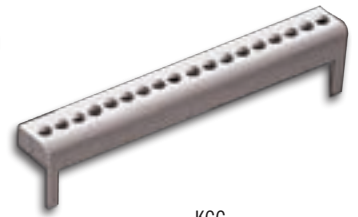
KDS



KFA



KML



KCC

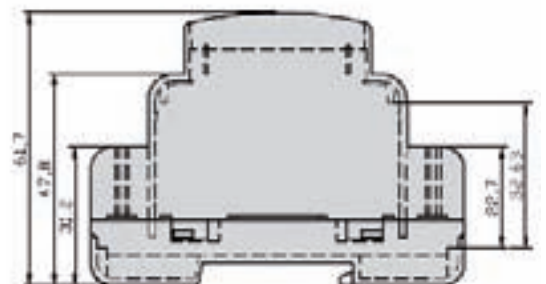


KAL



KLC

Dimensions



Modular Housing



MR9/K

MODULAR HOUSING MR9/K

Modular Housing, 9 unit, 157.5 mm long, for mounting on Omega Rail acc. To DIN EN 50022. It is suitable to house analogue and digital instrumentation. Snap-in locking between base and cover. The interconnection area is vented and can be open or covered with the relevant terminal hoses. Custom drilling on any side (windows, holes, slots). Made in Blend PC/ABS class UL94V2 or, on request, in class UL94V0, in RAL7035 grey. **Special colours on request.**

units	1	2	3	4	5	6	9	12
width mm			52.5	70	87.5	105	157.5	

TECHNICAL DRAWINGS ON: www.elbag.net

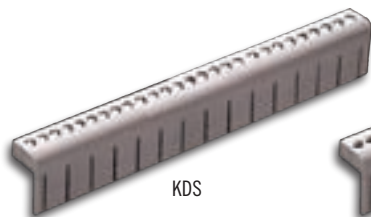
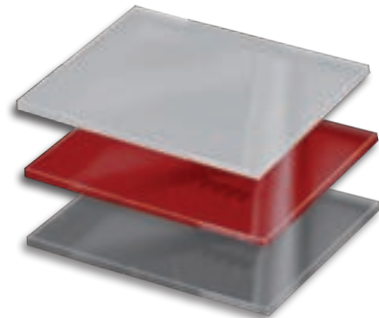


MR9/K

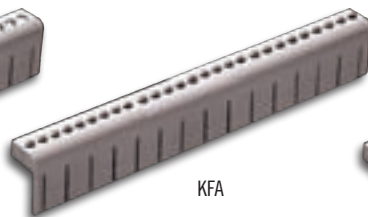
Grey

Red

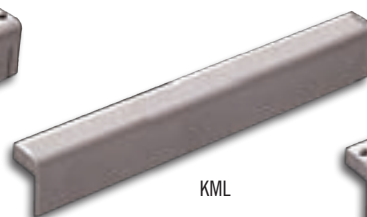
Neutro - Clear



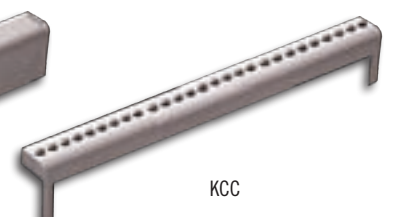
KDS



KFA

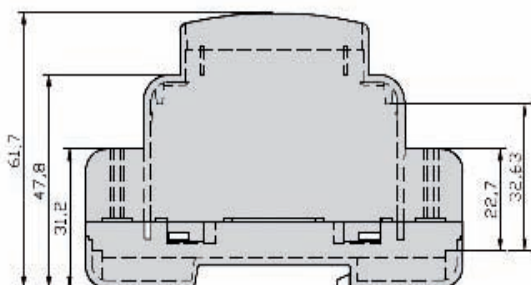


KML

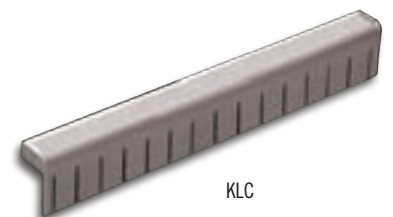


KCC

Dimensions



KAL



KLC

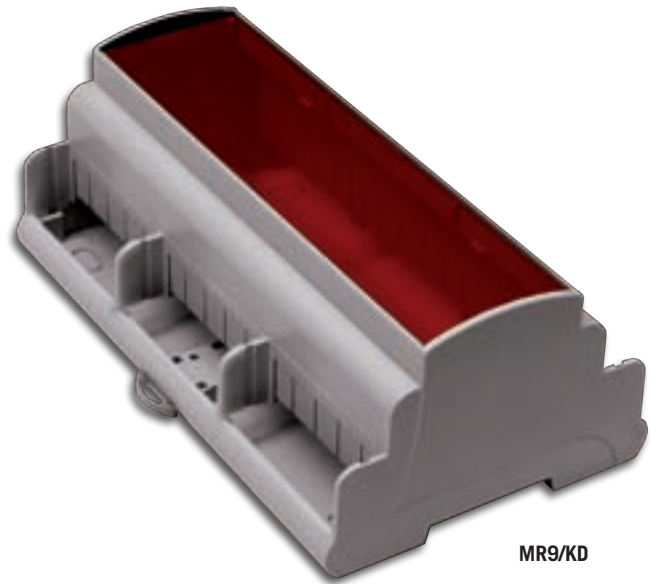
Modular Housing

MODULAR HOUSING MR9/KD

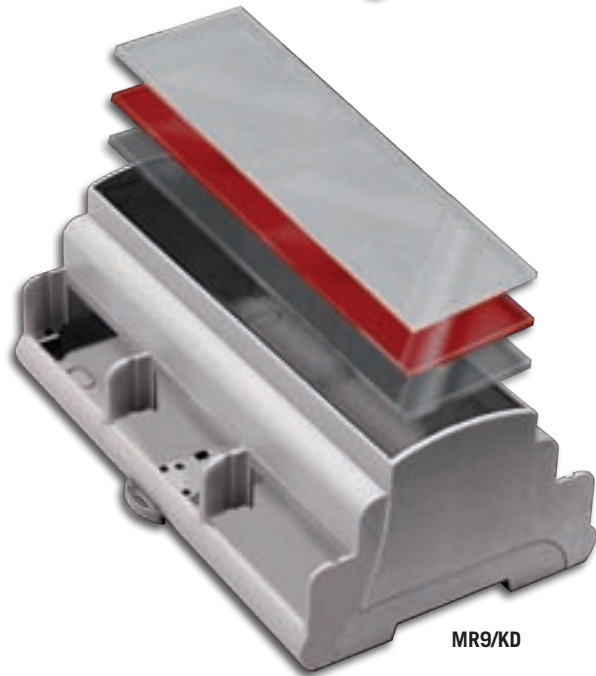
Modular Housing, 9 unit, 157.5 mm long, for mounting on Omega Rail acc. To DIN EN 50022. It is suitable to house analogue and digital instrumentation. Snap-in locking between base and cover. The 3-unit interconnection areas are vented and can be open or covered with the relevant terminal hoses. Custom drilling on any side (windows, holes, slots). Made in Blend PC/ABS class UL94V2 or, on request, in class UL94V0, in RAL7035 grey. **Special colours on request.**

units	1	2	3	4	5	6	9	12
width mm			52.5	70	87.5	105	157.5	

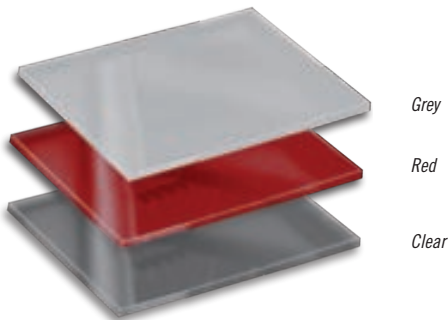
TECHNICAL DRAWINGS ON: www.elbag.net



MR9/KD



MR9/KD



Grey

Red

Clear



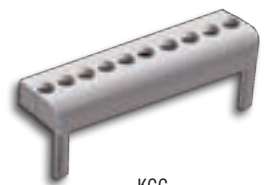
KDS



KFA



KML



KCC

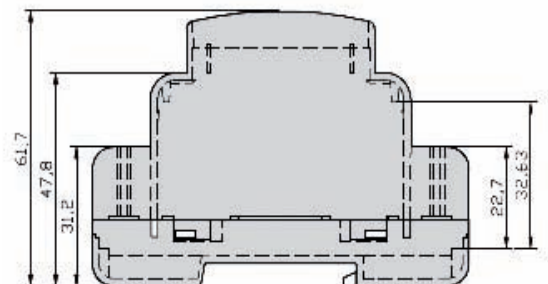


KAL

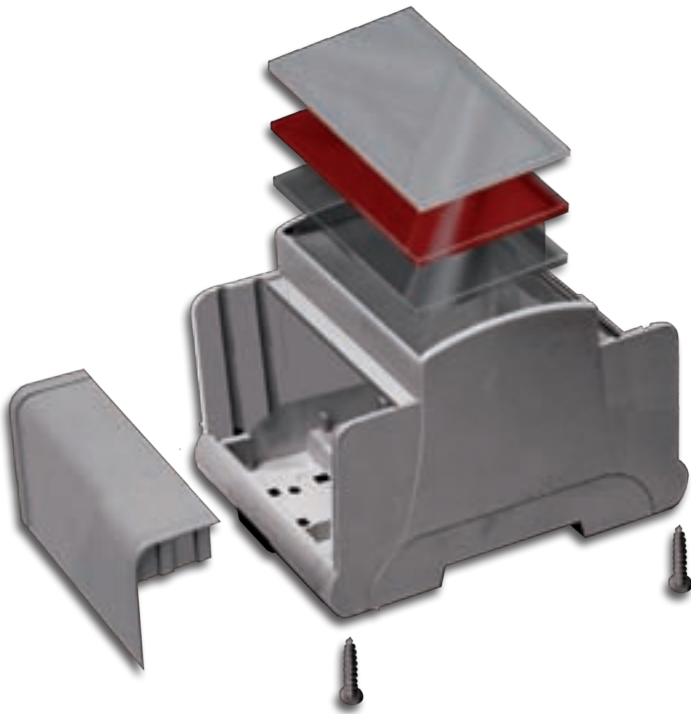


KLC

Dimensions



Modular Housing

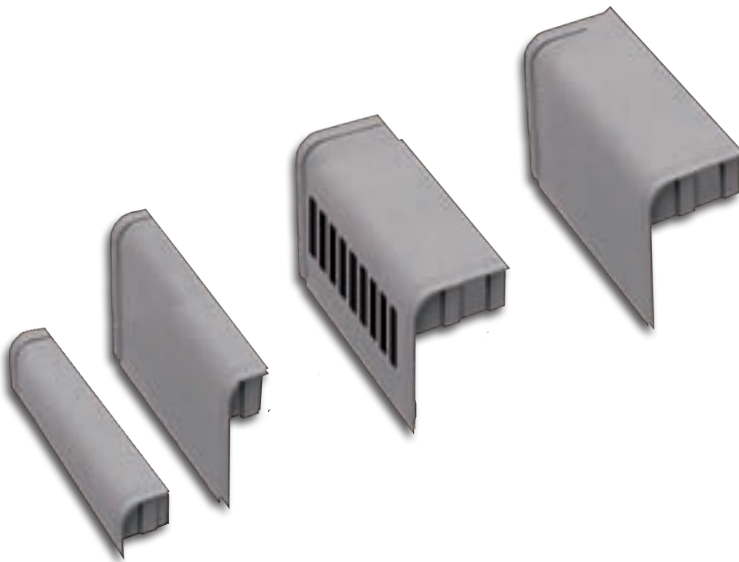


MODULAR HOUSING MR4/HDA

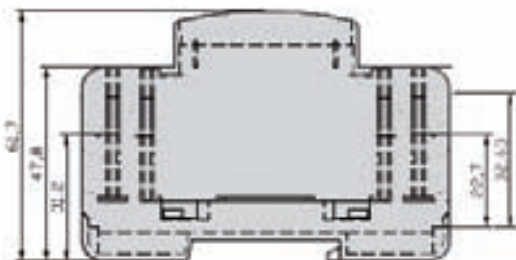
Modular Housing, 4 unit, 705 mm long, for mounting on Omega Rail acc. To DIN EN 50022. It is suitable to house two electronic boards, at two different levels, doubling the available space. Snap-in or **screw-in** locking between base and cover. Front panel grey, red or clear. The interconnection area is vented and can be open or covered with the relevant terminal hooses. Custom drilling on any side (windows, holes, slots). Made in Blend PC/ABS class UL94V2 or, on request, in class UL94V0, in RAL7035 grey. **Special colours on request.**

units	1	2	3	4	5	6	9	12
width mm				70		105	157.5	

TECHNICAL DRAWINGS ON: www.elbag.net



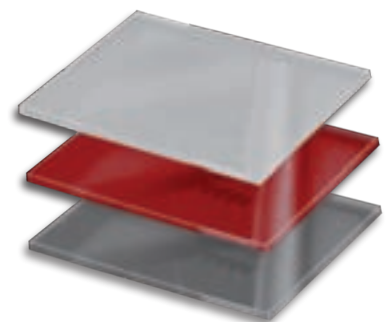
Dimensions



Grey

Red

Clear



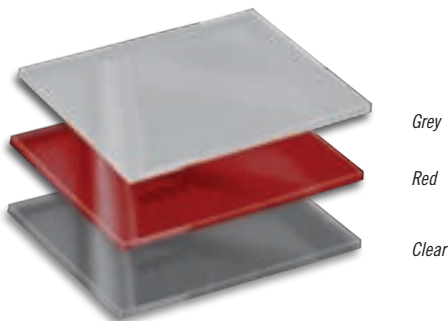
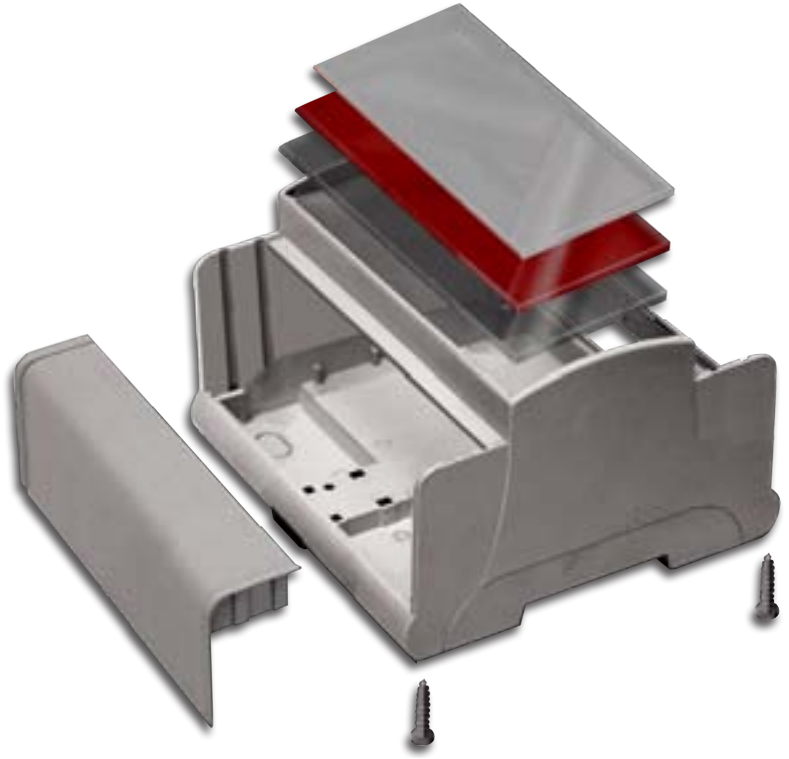
Modular Housing

MODULAR HOUSING MR6/HDA

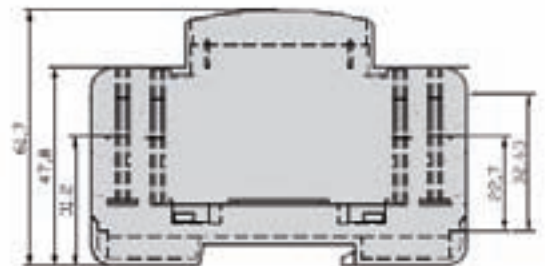
Modular Housing, 6 unit, 105 mm long, for mounting on Omega Rail acc. To DIN EN 50022. It is suitable to house two electronic boards, at two different levels, doubling the available space. Snap-in or **screw-in** locking between base and cover. Front panel grey, red or clear. The interconnection area is vented and can be open or covered with the relevant terminal hoods. Custom drilling on any side (windows, holes, slots). Made in Blend PC/ABS class UL94V2 or, on request, in class UL94V0, in RAL7035 grey. **Special colours on request.**

units	1	2	3	4	5	6	9	12
width mm				70		105	157.5	

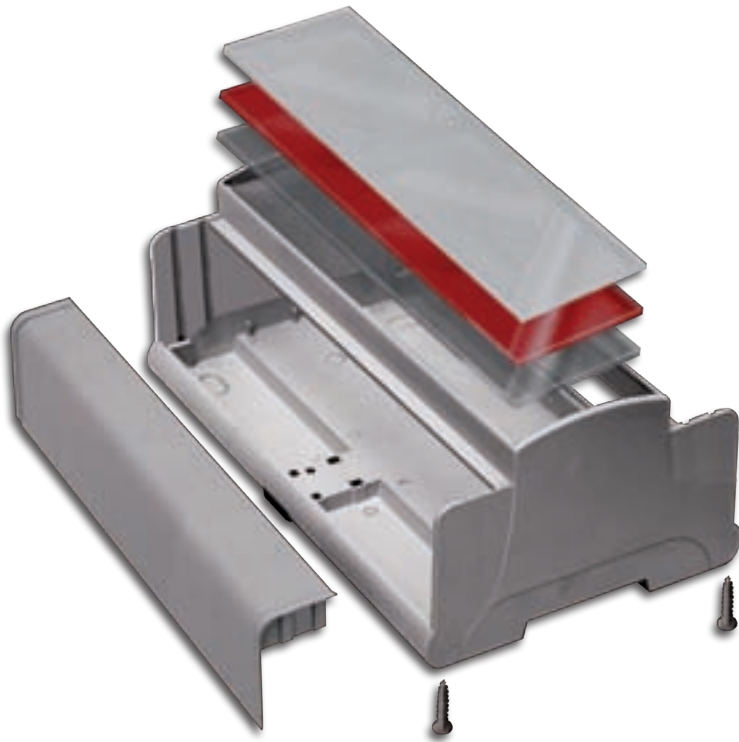
DISEGNI TECNICI SU: www.elbag.net
 TECHNICAL DRAWINGS ON:



Dimensioni - Dimensions



Modular Housing

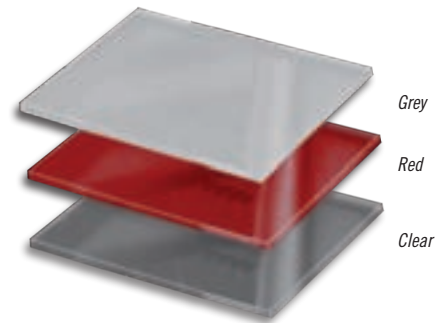


MODULAR HOUSING MR9/HDA

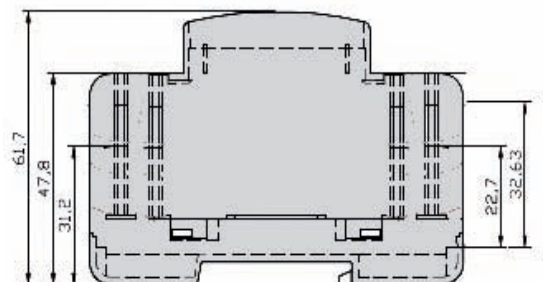
Modular Housing, 9 unit, 157.5 mm long, for mounting on Omega Rail acc. To DIN EN 50022. It is suitable to house two electronic boards, at two different levels, doubling the available space. Snap-in or **screw-in** locking between base and cover. Front panel grey, red or clear. The interconnection area is vented and can be open or covered with the relevant terminal hoses. Custom drilling on any side (windows, holes, slots). Made in Blend PC/ABS class UL94V2 or, on request, in class UL94V0, in RAL7035 grey. **Special colours on request.**

units	1	2	3	4	5	6	9	12
width mm				70		105	157.5	

TECHNICAL DRAWINGS ON: www.elbag.net



Dimensions



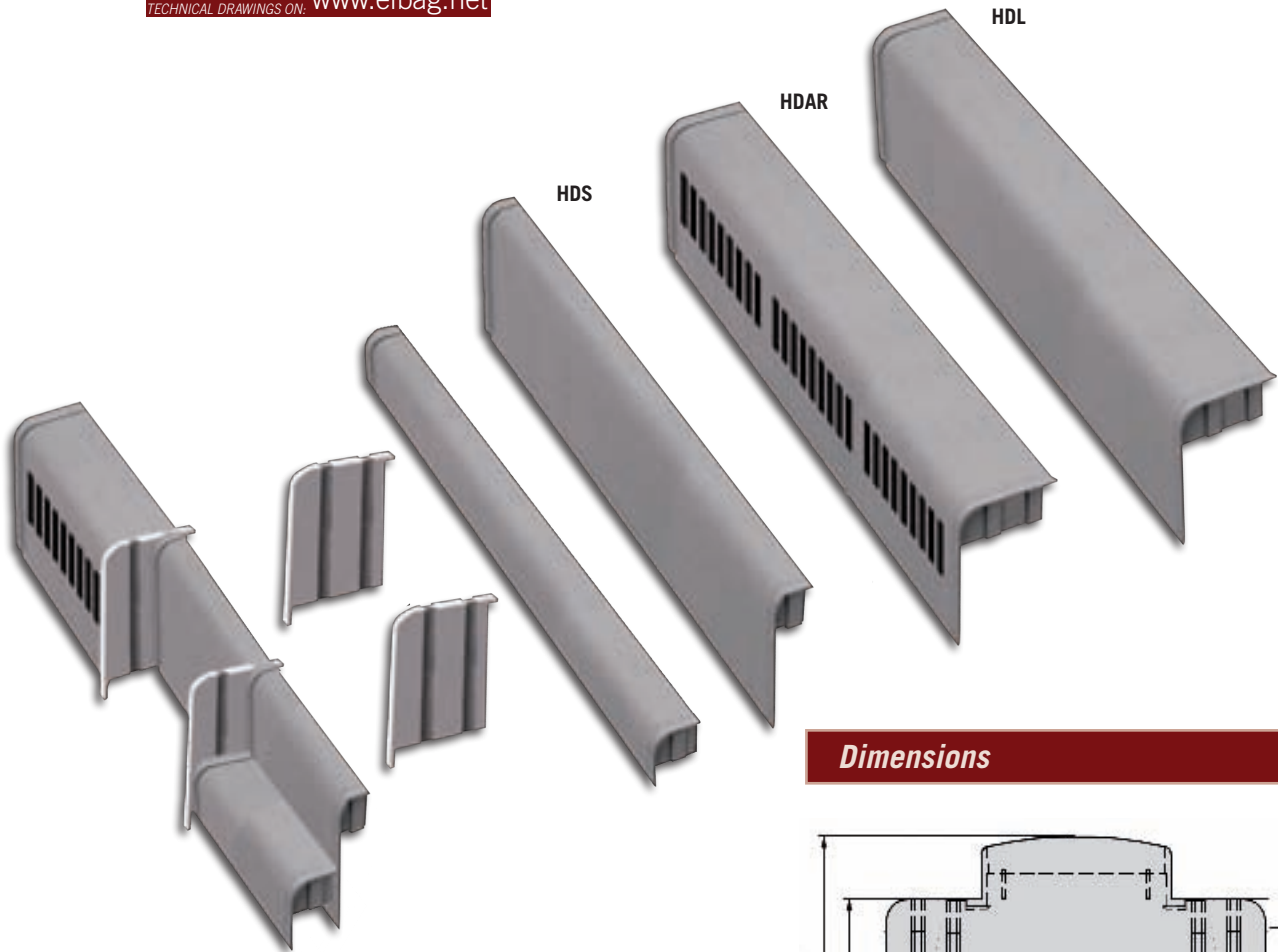
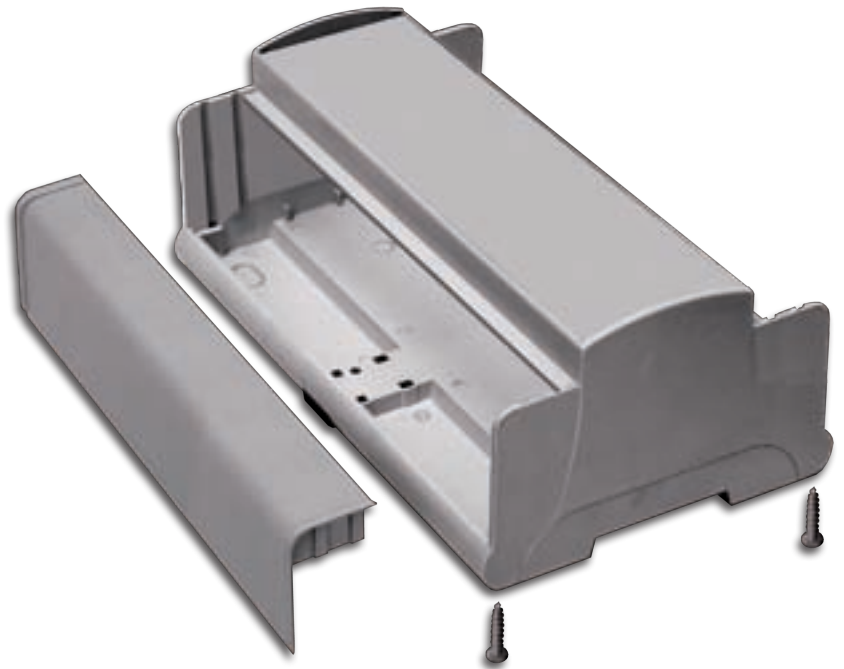
Modular Housing

MODULAR HOUSING MR9/HDC

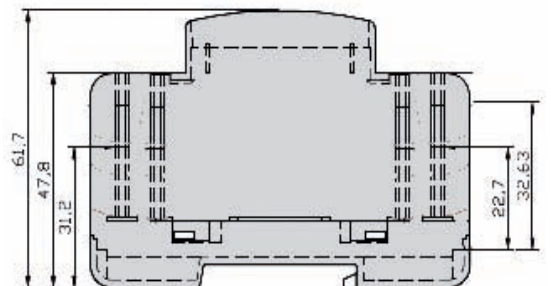
Modular Housing, 9 unit, 157.5 mm long, for mounting on Omega Rail acc. To DIN EN 50022. It is suitable to house two electronic boards, at two different levels, doubling the available space. Snap-in or **screw-in** locking between base and cover. Blind front panel. The interconnection area is vented and can be open or covered with the relevant terminal hoses. Custom drilling on any side (windows, holes, slots). Made in Blend PC/ABS class UL94V2 or, on request, in class UL94V0, in RAL7035 grey. **Special colours on request.**

units	1	2	3	4	5	6	9	12
width mm				70		105	157.5	

TECHNICAL DRAWINGS ON: www.elbag.net



Dimensions





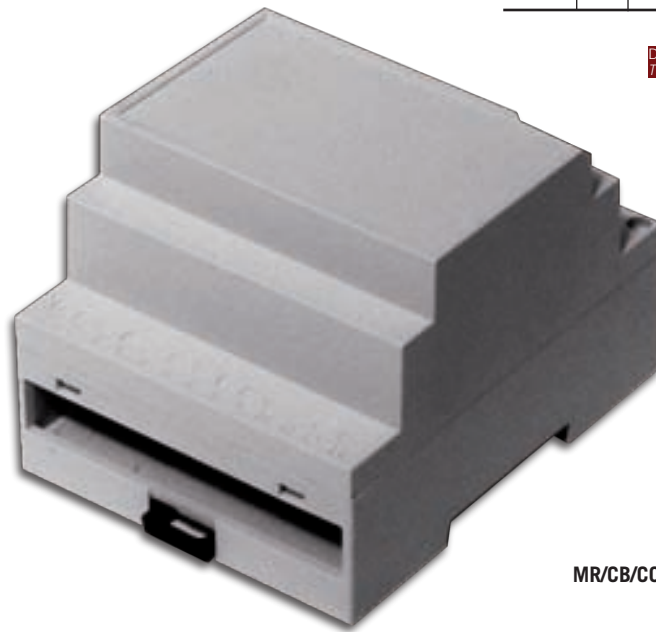
MR/CB/FA

MODULAR HOUSING MR.../CB

Modular Housing, 1 to 9 unit (17.5mm) long, H 53 mm for mounting on Omega Rail acc. To DIN EN 50022. It is suitable to house analogue and digital instrumentation. Screwed or snap-in locking between base and cover. Suitable to house fixed or detachable terminals with any pitch. Custom drilling on any side (windows, holes, slots). Made in Blend PC/ABS class V2 or, on request, in class V0 (UL94), in RAL7035 grey. **Special colours on request.**

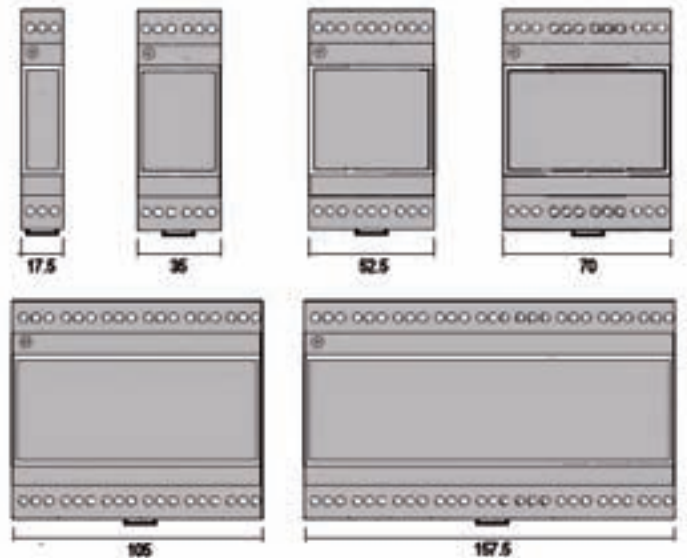
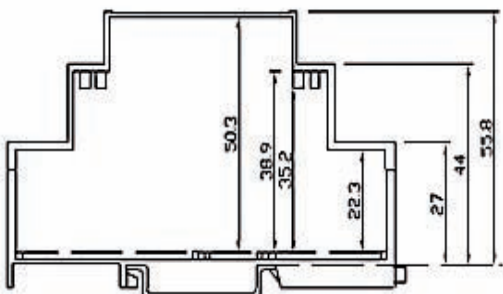
units	1	2	3	4	6	9
width mm	17.5	35	52.5	70	105	157.5

DISEGNI TECNICI SU: www.elbag.net
 TECHNICAL DRAWINGS ON:



MR/CB/CC

Dimensions



Modular Housing

MODULAR HOUSING MR9/CK

Modular Housing, 9 unit (157.5mm) long, H 53 mm for mounting on Omega Rail acc. To DIN EN 50022. It is suitable to house analogue and digital instrumentation. Screwed locking between base and cover. The walls behind terminal area are slotted. Suitable to house fixed or detachable terminals with any pitch. Custom drilling on any side (windows, holes, slots). Made in Blend PC/ABS class V2 or, on request, in class V0 (UL94), in RAL7035 grey. **Special colours on request.**



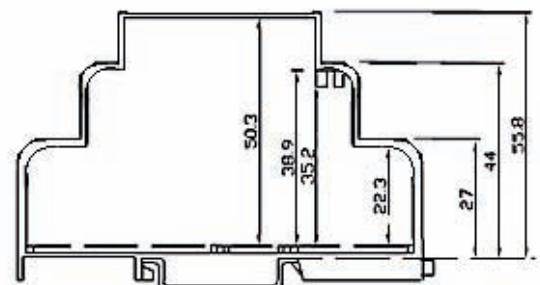
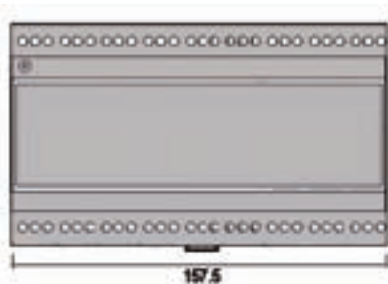
MR9/CK/CR

TECHNICAL DRAWINGS ON: www.elbag.net

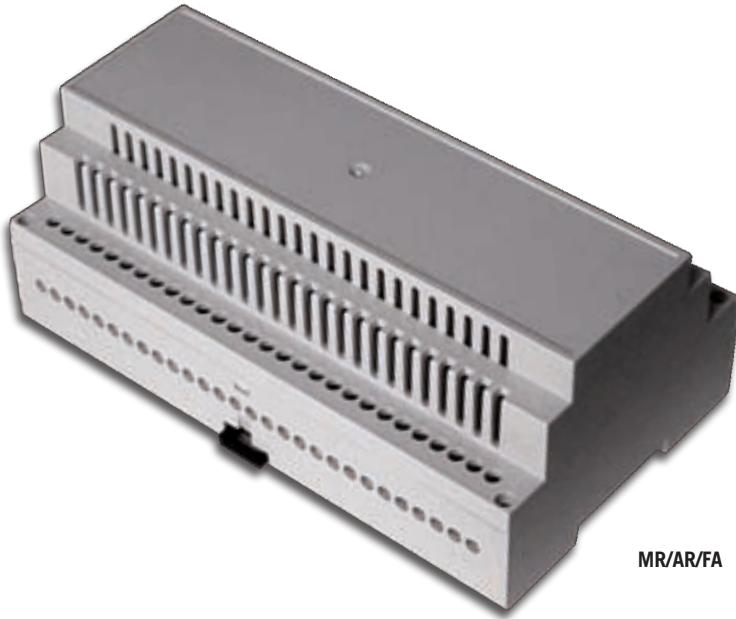


MR9/CK/SC

Dimensions



Modular Housing



MR/AR/FA

MODULAR HOUSING MR/AR

Modular Housing, 6 and 9 unit (17.5mm) long, H 53 mm for mounting on Omega Rail acc. To DIN EN 50022. Cover with ventilation (2.5 mm), allowing for a great heat sinking. It is suitable to house analogue and digital instrumentation. Screwed or snap-in locking between base and cover. Suitable to house fixed or detachable terminals with any pitch. Custom drilling on any side (windows, holes, slots). Made in Blend PC/ABS class V2 or, on request, in class V0 (UL94), in RAL7035 grey. **Special colours on request.**

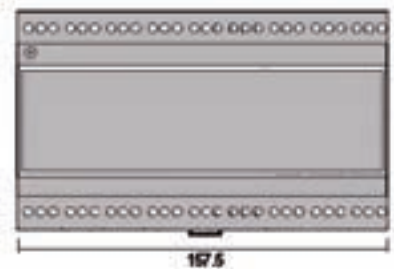
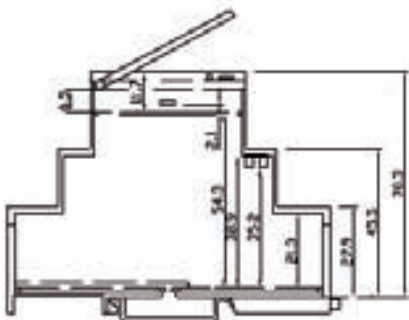
units						6	9
width mm						105	157.5

TECHNICAL DRAWINGS ON: www.elbag.net



MR/AR/CC

Dimensions



CONTENITORI MODULARI MR/C

Contentitore modulare da 1 a 9 unità (17.5mm), H 68 mm, per montaggio su guida Omega –DIN-EN50022. Atto a contenere strumentazione analogica o digitale. Il bloccaggio fra base e coperchio avviene a scatto o tramite viti. Si possono alloggiare morsetti fissi o estraibili di qualsiasi passo. Si eseguono lavorazioni custom su qualsiasi lato (cave, fori, asole). Il materiale utilizzato è Blend PC/ABS classe V2 o, a richiesta, in classe V0 UL94, in colore grigio RAL 7035. **Colori speciali a richiesta.**

MODULAR HOUSING MR/C

Modular Housing, 1 to 9 unit (17.5mm) long, H 68 mm for mounting on Omega Rail acc. To DIN EN 50022. It is suitable to house analogue and digital instrumentation. Screwed or snap-in locking between base and cover. Suitable to house fixed or detachable terminals with any pitch. Custom drilling on any side (windows, holes, slots). Made in Blend PC/ABS class V2 or, on request, in class V0 (UL94), in RAL7035 grey. **Special colours on request.**

units	1	2	3	4	6	9
width mm	17.5	35	52.5	70	105	157.5

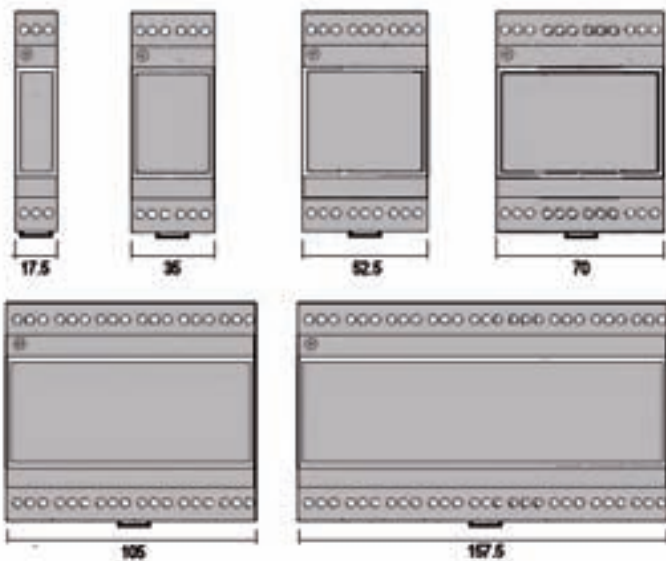
DISEGNI TECNICI SU:
TECHNICAL DRAWINGS ON: www.elbag.net



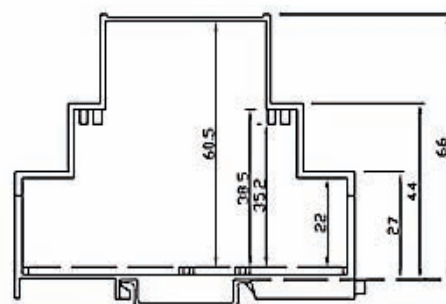
MR./A/FA



MR./A/CC



Dimensioni - Dimensions





MR../FA

CONTENITORI MODULARI MR/A

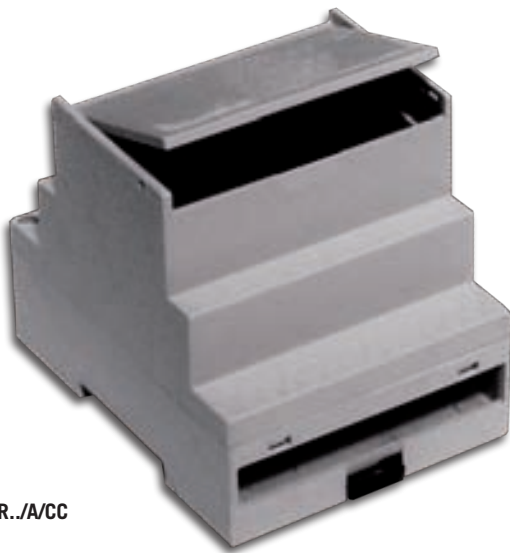
Contenitore modulare da 1 a 9 unità (17.5mm), H 68 mm, per montaggio su guida Omega –DIN-EN50022. Frontalino a cerniera rosso, trasparente o grigio. Atto a contenere strumentazione analogica o digitale. Il bloccaggio fra base e coperchio avviene a scatto o tramite viti. Si possono alloggiare morsetti fissi o estraibili di qualsiasi passo. La custodia è predisposta per la piombatura. Si eseguono lavorazioni custom su qualsiasi lato (cave, fori, asole). Il materiale utilizzato è Blend PC/ABS classe V2 o, a richiesta, in classe VO UL94, in colore grigio RAL 7035. **Colori speciali a richiesta.**

MODULAR HOUSING MR/A

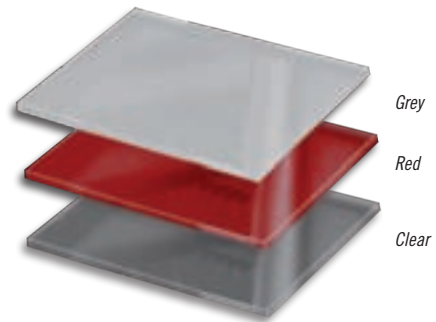
Modular Housing, 1 to 9 unit (17.5mm) long, H 68 mm for mounting on Omega Rail acc. To DIN EN 50022. Front panel red, clear or blind. It is suitable to house analogue and digital instrumentation. Screwed or snap-in locking between base and cover. Suitable to house fixed or detachable terminals with any pitch. The housing can be easily plumbed. Custom drilling on any side (windows, holes, slots). Made in Blend PC/ABS class V2 or, on request, in class VO (UL94), in RAL7035 grey. **Special colours on request.**

units	1	2	3	4	6	9
width mm	17.5	35	52.5	70	105	157.5

DISEGNI TECNICI SU: www.elbag.net
 TECHNICAL DRAWINGS ON:



MR../CC

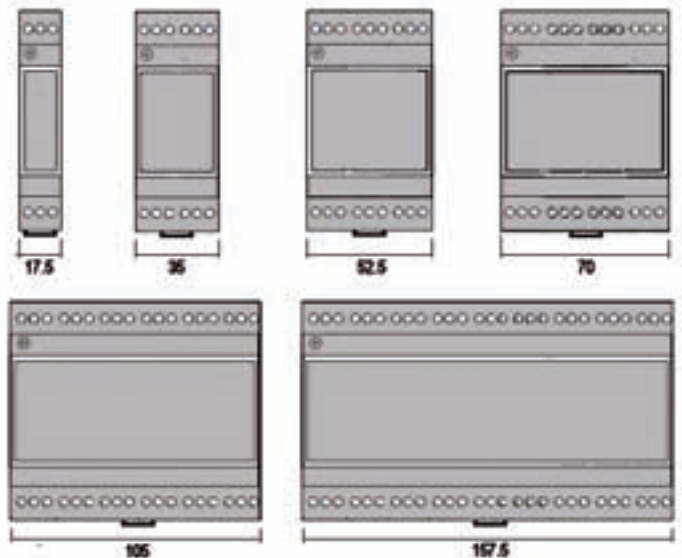
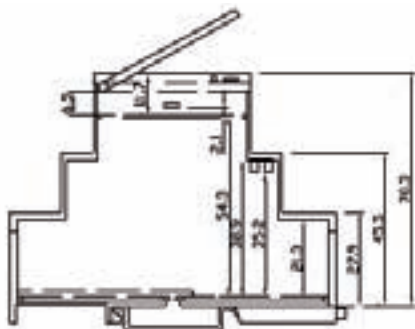


Grey

Red

Clear

Dimensioni - Dimensions

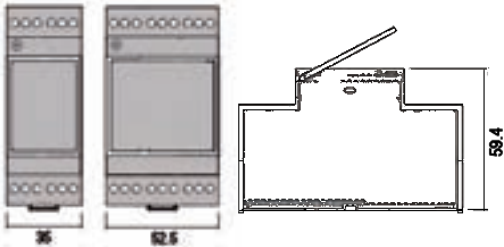


Modular Housing

MODULAR HOUSING MR/AB

Modular Housing, 2 and 3 unit (17.5mm) long, H 68 mm for mounting on Omega Rail acc. to DIN EN 50022. Front panel red, clear or blind. It is suitable to house analogue and digital instrumentation. Snap-in locking between base and cover. Suitable to house fixed or detachable terminals with any pitch. Custom drilling on any side (windows, holes, slots). Made in Blend PC/ABS class V2 or, on request, in class V0 (UL94), in RAL7035 grey. **Special colours on request.**

Dimensions



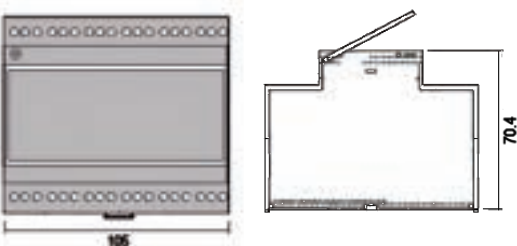
MR/AB

TECHNICAL DRAWINGS ON: www.elbag.net

MODULAR HOUSING MR/AB

Modular Housing, 6 unit (17.5mm) long, H 68 mm for mounting on Omega Rail acc. to DIN EN 50022. Front panel red, clear or blind. It is suitable to house analogue and digital instrumentation. Screwed or snap-in locking between base and cover. The case can house two 100 mm printed circuits. Suitable to house fixed or detachable terminals with any pitch. Custom drilling on any side (windows, holes, slots). Made in Blend PC/ABS class V2 or, on request, in class V0 (UL94), in RAL7035 grey. **Special colours on request.**

Dimensions



MR/AB/CC



MR/BB/CC



MR/BB/FA

TECHNICAL DRAWINGS ON: www.elbag.net

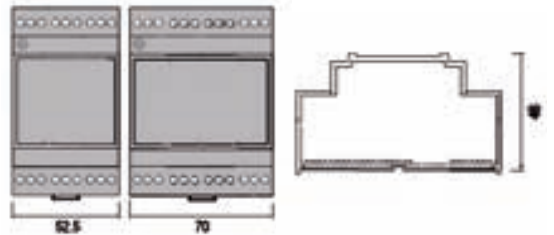


MR/MC

MODULAR HOUSING MR/BB

Modular Housing, 3 and 4 unit (17.5mm) long, reduced height (46 mm), for mounting on Omega Rail acc. To DIN EN 50022. It is suitable to house analogue and digital instrumentation. Screwed or snap-in locking between base and cover. Suitable to house fixed or detachable terminals with any pitch. Custom drilling on any side (windows, holes, slots). Made in Blend PC/ABS class V2 or, on request, in class V0 (UL94), in RAL7035 grey. **Special colours on request.**

Dimensioni - Dimensions



MODULAR HOUSING MR/MC

Modular Housing, 6 unit (17.5mm) long, H 60 mm for mounting on Omega Rail acc. To DIN EN 50022. It is suitable to house analogue and digital instrumentation. Screwed or snap-in locking between base and cover. Suitable to house detachable terminals with any pitch. The case can house two 100 mm printed circuits. Custom drilling on any side (windows, holes, slots). Made in Blend PC/ABS class V2 or, on request, in class V0 (UL94), in RAL7035 grey. **Special colours on request.**

Dimensioni - Dimensions

