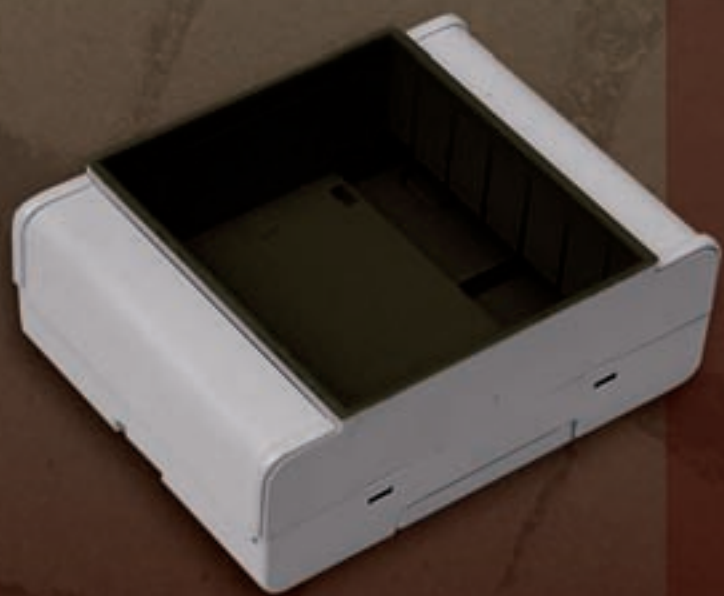


SIMP  
EL BAG

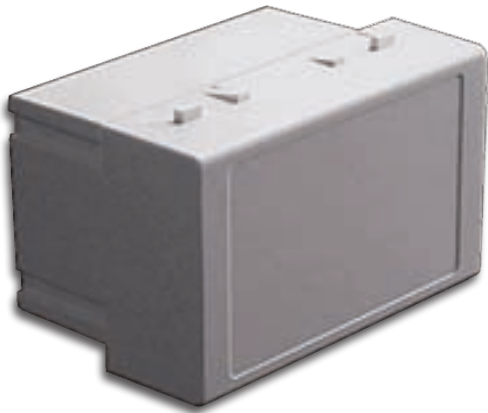


DOMOTICS - DOMOTICA

# Domotics 500 Series



503B



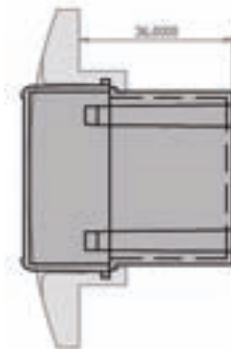
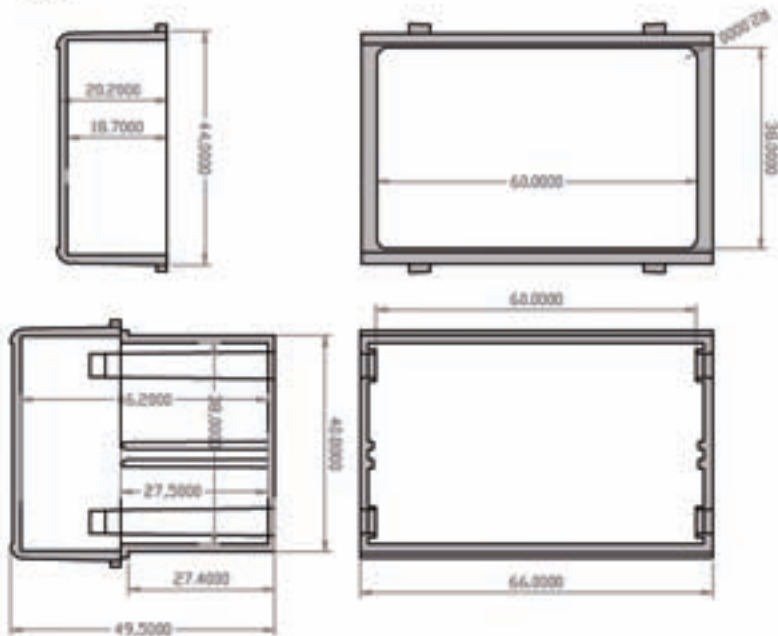
## DOMOTICS 503B SERIES

The housing 503B is suitable for Domotics and similar applications, where local terminals are installed in the wall like an usual wall-mounted socket or switch. This Series consists of a bottom and a front panel, to be mounted in any compatible wall plate of BTICINO and other Manufacturers. The Series 503 is also useful for light dimmers, ventilation and clima units, ambient heating controls, 24 hour timers, and small electronic units for display and control. This Series is particularly suited for application in CIVIL, MARINE and HOTELS environments. Custom drilling on any side. Made of Blend PC/ABS class V2 (on request class V0), in white, grey (RAL7035) or black (RAL7021).

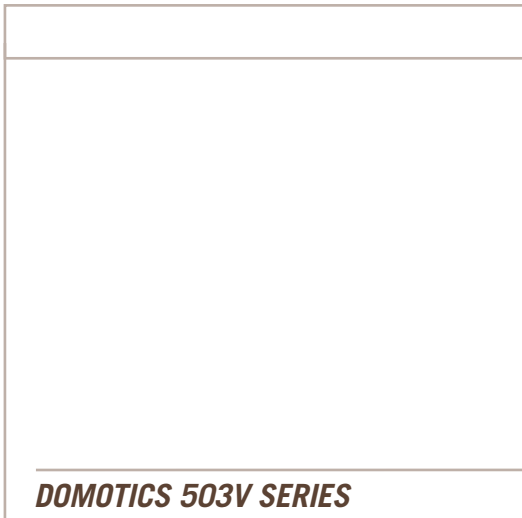
TECHNICAL DRAWINGS ON: [www.elbag.net](http://www.elbag.net)

## Dimensions

503/B



# Domotics 500 Series



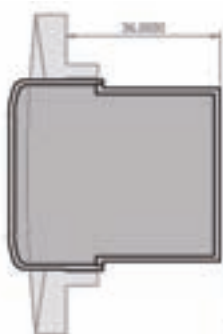
## DOMOTICS 503V SERIES

The housing 503V is suitable for Domotics and similar applications, where local terminals are installed in the wall like an usual wall-mounted socket or switch. This Series consists of a bottom and a front panel, to be mounted in compatible wall plates of VIMAR and other Manufacturers. The Series 500 is also useful for light dimmers, ventilation and clima units, ambient heating controls, 24 hour timers, and small electronic units for display and control. This Series is particularly suited for application in CIVIL, MARINE and HOTELS environments. Custom drilling on any side. Made of Blend PC/ABS class V2 (on request class V0), in grey (RAL7035) or black (RAL7021).

TECHNICAL DRAWINGS ON: [www.elbag.net](http://www.elbag.net)

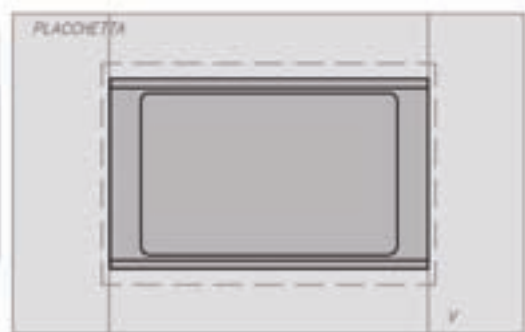
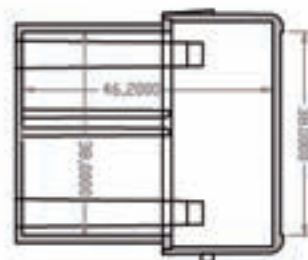
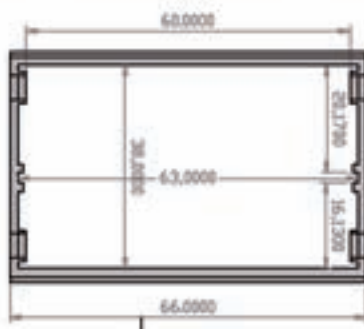
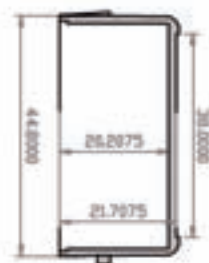


503V



## Dimensioni - Dimensions

503/V



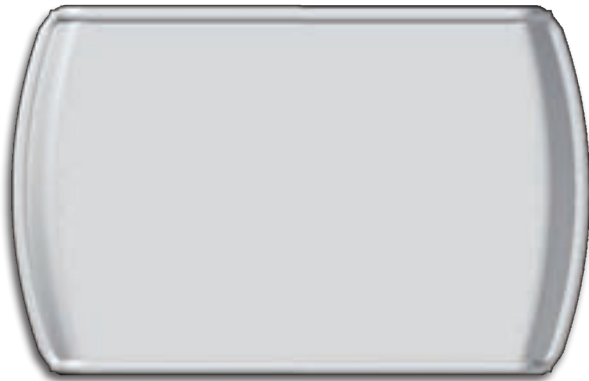


SM4B

### DOMOTICS SERIES SM4B

The housing SM4B is suitable for Domotics and similar applications, where local terminals are installed in the wall like an usual wall-mounted socket or switch. This Series consists of a bottom and a front panel, housing the same pcb of the MR4/K. The Series SM4B is useful for light dimmers, ventilation and clima units, ambient heating controls, 24 hour timers, and small electronic units for display and control. This Series is particularly suited for application in **CIVIL, MARINE and HOTELS** environments. Custom drilling on any side. Made of Blend PC/ABS class V2 (on request class V0), in grey (RAL7035) or black (RAL7021). **Special colours on request.**

TECHNICAL DRAWINGS ON: [www.elbag.net](http://www.elbag.net)



ST4K



ST2Q

### DOMOTICS SERIES ST

The housing ST is suitable for Domotics and similar applications, where local terminals are installed on the wall like an usual wall-mounted socket or switch. This Series consists of a bottom and a front panel, with dimensions compatible with 2-and 3-modules devices. The Series ST is useful for light dimmers, ventilation and clima units, ambient heating controls, 24 hour timers, and small electronic units for display and control. This Series is particularly suited for application in **CIVIL, MARINE and HOTELS** environments. Custom drilling on any side. Made of Blend PC/ABS class V2 (on request class V0), in grey (RAL7035) or black (RAL7021).