



SHOCKproof™ lockers

Probe offer their high quality steel lockers NOW with TRESPA® 10mm solid grade laminate inset doors. These tough doors are impact resistant, scratch resistant, moisture resistant and heat resistant! To find out more about this amazing material visit www.trespa.com

FREE ON-SITE ADVICE

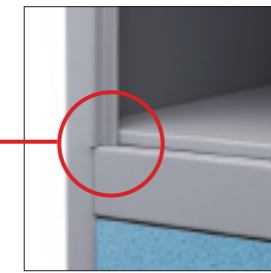
- IMPACT RESISTANT
- SCRATCH RESISTANT
- GRAFFITI RESISTANT
- INSET DOOR DESIGN
- WEAR RESISTANT
- EASY CLEAN



inset door design

ANTI-VANDAL DOOR STOPS

Unique to the Probe Shockproof range, these internal door stops are designed to prevent the door from being forced inwards.



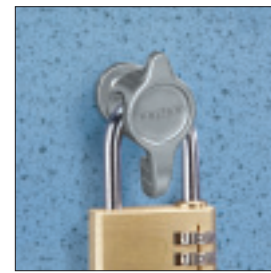
HIGH SECURITY
Welded Compartment divider incorporates internal door sill for added security.

5 KNUCKLE HINGES WITH SECURING PLATE

This strong hinge with securing plate offers 270° opening allowing easy access while keeping contents extra secure.



LOCK OPTIONS
Probe offer a versatile range of locks ensuring a locker that is suited to your environment. See page 8 for all lock options.



academies
schools
colleges
universities

SUPER TOUGH

These super tough lockers have solid grade TRESPA® laminate doors.

ADDED STRENGTH

The Die Cast securing plate gives added strength to the hinges ensuring contents remain secure.

DECOR END PANEL

An optional decorative end panel adds a real touch of style and strength.

TRESPA®

LOW LOCKER



NEW
SHOCKproof™ lockers

www.storwelldirect.co.uk

1

BUILDING SCHOOLS for the **FUTURE** ✓

Building Schools for the Future is a government initiative to rebuild or renew all secondary schools.

2

our toughest lockers set

OPTIONAL SLOPING TOP



NUMBERING SYSTEM

Available at additional cost.
Number plates will be recessed into door if ordered with lockers.

STANDARD LOCK

Probe standard locks feature a massive 3000 serial combinations - all exclusive to Probe.

HIGH SECURITY WELDED COMPARTMENT DIVIDER INCORPORATES INTERNAL DOOR STOP AND SILL

HASP AND STAPLE

This attractive design allows easy use of padlock. (Padlock not supplied).

HINGE SECURING PLATE

This Die Cast securing plate clamps the door to the hinge giving added security.

RE-PROGRAMMABLE COMBINATION LOCK

Easy to use dial with 10,000 combinations.

5 KNUCKLE HINGES

This strong hinge offers 270° opening.



SPECKLED WHITE

BLACK BODY Available at additional cost.

SPECKLED POWDER BLUE

SILVER BODY

WILD CHERRY

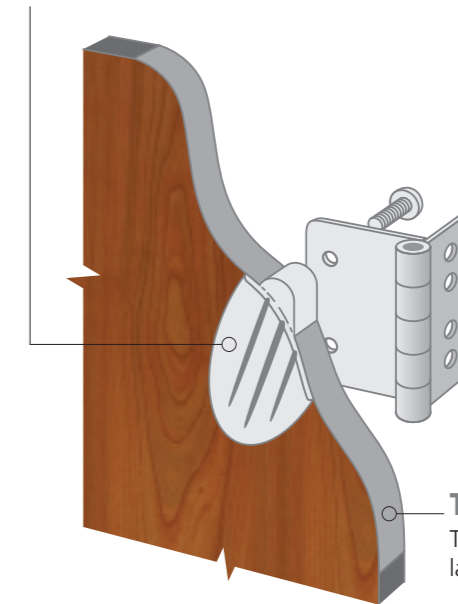
SILVER BODY

AVAILABLE IN 1, 2, 3 AND 4 TIER



HIGH SECURITY HINGE AND SECURING PLATE

This high quality Die Cast securing plate clamps the door to the hinge giving added strength for the toughest environments.



5 KNUCKLE HINGES

This strong hinge offers 270° opening.

TRESPA DOORS

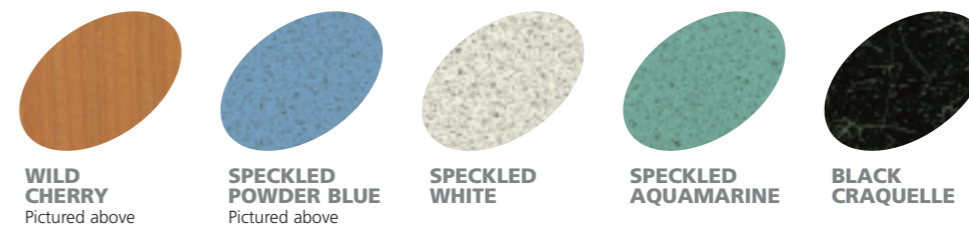
TRESPA® 10mm solid grade laminate inset doors.



TRESPA ATHLON FIRE CLASSIFICATION

Type: Standard (Non-FR): Euroclass D-s2, d0 EN 13501-1
Type: FR (Fire Resistant): Euroclass B-s2, d0 EN 13501-1 (available at additional cost)

STOCK DOOR COLOURS

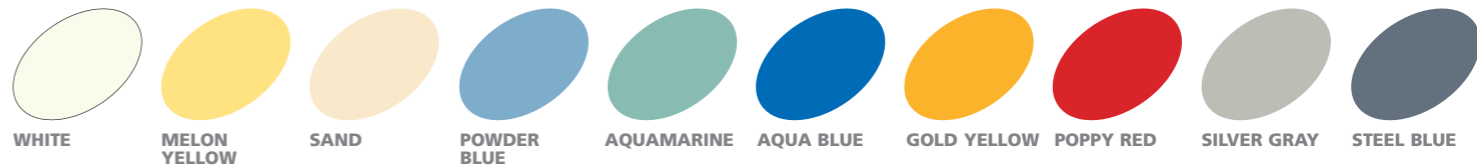


BODY COLOURS

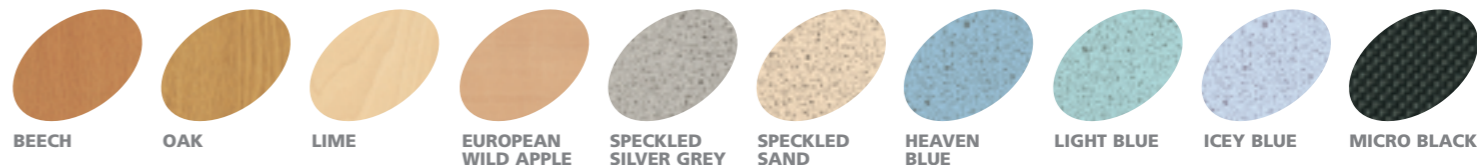


NON STOCK COLOURS Subject to minimum quantity of 100 doors.

PLAIN COLOURS



WOODGRAIN EFFECT AND PATTERNED FINISHES



NEW

SHOCKproof™ lockers

www.storwelldirect.co.uk

3

BUILDING SCHOOLS for the FUTURE

Building Schools for the Future is a government initiative to rebuild or renew all secondary schools.

4

education lockers - all steel

Probe Lockers offer colour options for every level, from kindergarten to college. From a simple cube upwards, the sheer variety of lockers available puts them at the top of every schools list for changing and storage requirements.

FREE ON-SITE ADVICE

STRENGTH

Every locker has a full height strengthener welded inside each door to increase strength and security.

WELDED PLINTH

Probe Lockers have a welded plinth making each compartment totally separate and increasing structural rigidity.

5 KNUCKLE HINGES

This strong hinge offers 270° opening allowing easy access.

LOCK OPTIONS

Probe offer a versatile range of locks ensuring a locker that is suited to your environment.

MEETS BS 4680:1996
excluding size specification



- Quality engineered to provide a sturdy and robust locker that will give many years of service.
- Built-in security features generate confidence that belongings will be kept safe.
- Replacement locks and keys are available if required. Numbered cards, for locker identification, available on request.
- Durable powder coated finish with colour options to suit your environment.
- **AC+IVECOAT**[®] anti-bacterial technology
The hard wearing anti-bacterial powder coating for an active environment as standard.



The miracles of science™

FULL HEIGHT LOCKERS
□ Available in 1-6 & 8 tiers.



CUBE LOCKERS
□ Three sizes available:
□ 305³, 380³, 460³ (mm)

LOW LOCKERS
□ Height 1220mm

1780mm

AVAILABLE COLOURS FOR LOCKERS / CLOAKROOM - WWW.PROBE-COLOURS.CO.UK

All steel components are powder coated with **AC+IVECOAT**[®] exclusive to Probe.

● LOCKER DOOR COLOUR
▲ LOCKER BODY COLOUR



BUILDING SCHOOLS for the FUTURE

Building Schools for the Future is a government initiative to rebuild or renew all secondary schools.

www.storwelldirect.co.uk

All our timber comes from suppliers with positive reforestation policies, and is supplied from sustainable forests.



5

6

steel body lockers surface mounted doors

FREE ON-SITE ADVICE



EASY ACCESS HINGES
Hinges open through a wide 164° for ease of access.

3 DOOR LOCKERS



4 DOOR LOCKERS



MDF CORE LAMINATED DOORS AND END PANELS
End panels optional.

STANDARD LOCK
Probe standard locks feature a massive 3000 serial combinations - all exclusive to Probe.

AVAILABLE COLOURS

All steel components are powder coated with **AC+IVECOAT**® exclusive to Probe.

SOLID COLOUR



RED

BLUE

Stock item on 3 & 4 door lockers sized 305mm wide.

*TIMBER EFFECT



ASH

OAK

CHERRY

Subject to minimum order quantity.

LAMINATED PANELS

Probe offer five durable laminated finishes, to a standard steel body, in 2, 3 & 4 compartment Lockers. Laminated panels comprise of 18mm MDF Core with solid laminated facing and 2mm PVC edging. (Timber effect subject to minimum order quantity).

locker options



NUMBER PLATES FOR TRESPA® DOORS

This is the optional numbering system for TRESPA® door lockers, available at an additional cost. Number plates will be recessed into door if ordered at same time as lockers.



INCORPORATED LOCK OPTIONS - INCLUDED IN LOCKER PRICE Please request lock type at time or ordering.



STANDARD LOCK

The standard lock has a micro sprung 10 disc lock featuring a massive 3000 serial combinations - all exclusive to Probe Lockers. Included in price of locker. **NOTE:** TRESPA® door lockers have a different numbering system, see above, and do not need a lock surround.



*HASP AND STAPLE

Attractive design allowing easy use of padlock fitting. Shank diameter minimum 6mm, maximum 7mm (Padlock not supplied).

NOTE: TRESPA® door lockers have a different numbering system, see above, and do not need a lock surround.

***Please request when ordering**

COSTED LOCK OPTIONS - NOT INCLUDED IN LOCKER PRICE Please request lock type at time or ordering.



DIGITAL COMBINATION LOCK

This Digital Combination Lock is simple to programme and use, it has in excess of 40,000 possible combinations. No more lost keys! Batteries last up to 15,000 user operations. **Includes: built in master code.**



RE-PROGRAMMABLE COMBINATION LOCK

Re-programming using service key.

Easy to use front facing dial with 10,000 combinations.

One Service Key required per installation (Service Key sold separately).

(Not available on laminated faced lockers)

NOTE: TRESPA® door lockers have a different numbering system, see above, and do not need a lock surround.

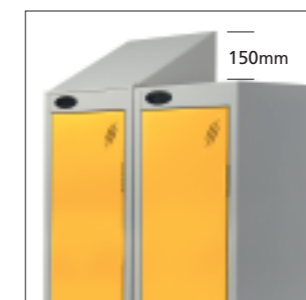
Above locks are pictured on steel doors. Some locks differ slightly in appearance when fitted to TRESPA® doors.



WIRELESS RFID LOCK

The user opens and closes the door using a non contact data carrier. Just tap on it briefly and the door locks or unlocks.

The standard battery free digital data carriers can be read and programmed without contact.



*SLOPING TOP OPTION

The optional sloping top, prevents the accumulation of rubbish and is **available on all standard lockers** at an additional cost.

***Please request when ordering.**
(Only available on 1780mm Height Lockers)

All sizes contained within this brochure are nominal. We reserve the right to alter design and specification of any product within this brochure without prior consent.

cloakroom

Probe offer a great range of easy install Cloakroom units to enhance your changing room. Many options available, comprehensive literature available for this product.

FREE ON-SITE ADVICE

Hook Bench DOUBLE SIDED

This bench is also available as a single sided unit.

COAT HOOKS

These stylish, plastic, coat hooks have been ergonomically designed and contain **AC+IVECOAT** technology.

COAT HOOKS
These **virtually unbreakable**, polymer coat hooks, have been ergonomically designed and contain **AC+IVECOAT** technology.



DOUBLE SIDED	
LENGTHS	HOOKS
1000mm	10
1500mm	16
2000mm	20

SINGLE SIDED	
LENGTHS	HOOKS
1000mm	5
1500mm	8
2000mm	10

ROBUST FRAMES

All frames are constructed from **robust 50mm round, thick tubing** with fully welded joints for strength and durability.



SOLID ASH SLATS

TYPE B

Single Compartment Baskets

TYPE A

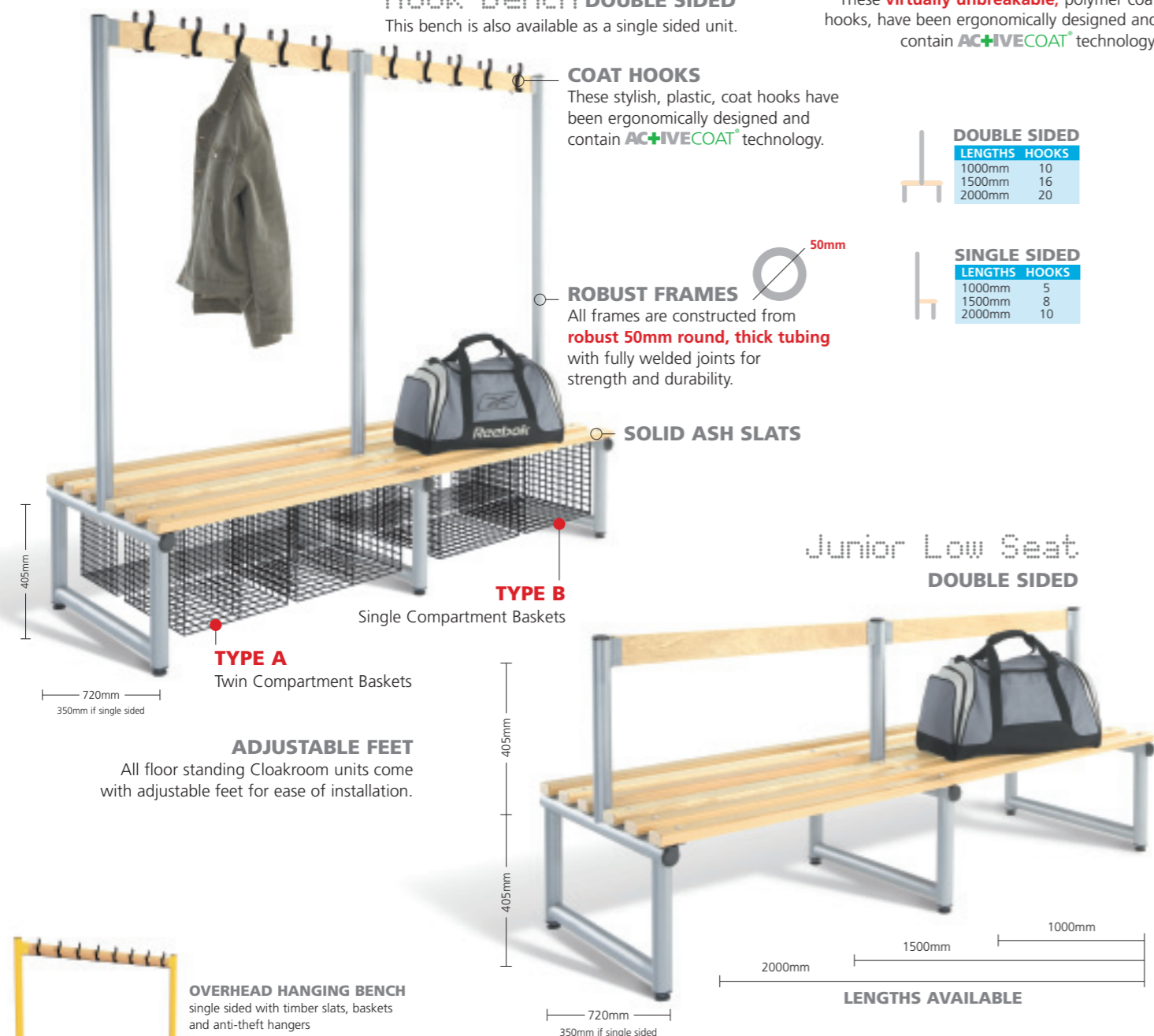
Twin Compartment Baskets

ADJUSTABLE FEET

All floor standing Cloakroom units come with adjustable feet for ease of installation.

Junior Low Seat

DOUBLE SIDED



OVERHEAD HANGING BENCH

single sided with timber slats, baskets and anti-theft hangers



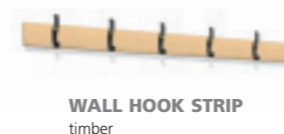
LOW SEAT

single sided with timber slats



BENCH

single sided with timber slats



WALL HOOK STRIP

timber

LENGTHS AVAILABLE



technic library shelving

This versatile shelving system is designed to offer maximum flexibility and provides sturdy and adaptable shelving for libraries large or small. With a great range of options and accessories you can quickly install a system tailored to suit your space. Comprehensive literature available for this product.

FREE ON-SITE ADVICE

FEATURES & BENEFITS

- Anti-slip finish on shelves.
- Huge range of optional accessories.
- Decor End Panels available
- Vertical support for Books, folders etc
- Quick and easy to build system
- Adjustable feet

UPRIGHTS

This versatile system includes single & double sided floorstanding uprights, wall mounted & wheel mounted uprights.

QUICK ADJUSTMENT

All uprights allow for quick and easy adjustment of shelves in increments of 25mm.

5 HEIGHT OPTIONS

Free standing uprights available in five heights 1200, 1500, 1800, 2100 & 2300mm. Note: Wall & wheel mounted available in different heights.

REMOVABLE BACKSTOP

The clear plastic backstops can be easily removed if required.



For your piece off mind, Probe Technic Shelving has passed the following British Standards for strength and rigidity:
BS 4875-7: 2006 PART 7 &
BS 4875-8: 1998 PART 8

AVAILABLE COLOURS FOR TECHNIC - WWW.PROBE-COLOURS.CO.UK

All steel components are powder coated with **AC+IVECOAT** exclusive to Probe.



RED



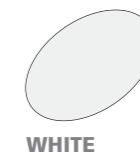
BLUE



YELLOW



GREEN



WHITE



SILVER



BLACK

Units supplied in component format including all necessary fixings (excludes wall and floor fixings). All sizes nominal.

www.storwelldirect.co.uk

All our timber comes from suppliers with positive reforestation policies, and is supplied from **sustainable forests**.



BUILDING SCHOOLS for the FUTURE

Building Schools for the Future is a government initiative to rebuild or renew all secondary schools.

storwell

■ ■ ■ S Y S T E M S



More storage in less space

Working with a specialist partner with over 28 years experience in the storage sector is just one reason why you can trust Storwell Systems with your enquiries.

We are **objective, non-tied, independent, and impartial** and continually researching all the leading UK manufacturers for product quality and innovation; only selecting those companies whose **integrity, design** and **product range** are the best in the industry so... you don't need to.

You can be sure you will get impartial advice, the best prices and delivery times and a dedicated project manager giving you all the technical support you need for complete peace of mind.



T: 01527 592444 F: 01527 592727
E: sales@storwellsystems.co.uk
W: www.storwelldirect.co.uk