

---


**ELECTROMAGNETIC LINEAR FEEDERS**

---

**MODEL LEV / LEX**

- Compact Feeder
- Electronic control for variation of feed rate
- Protection IP67
- Fibreglass Springs

On request can be supplied with ATEX certification

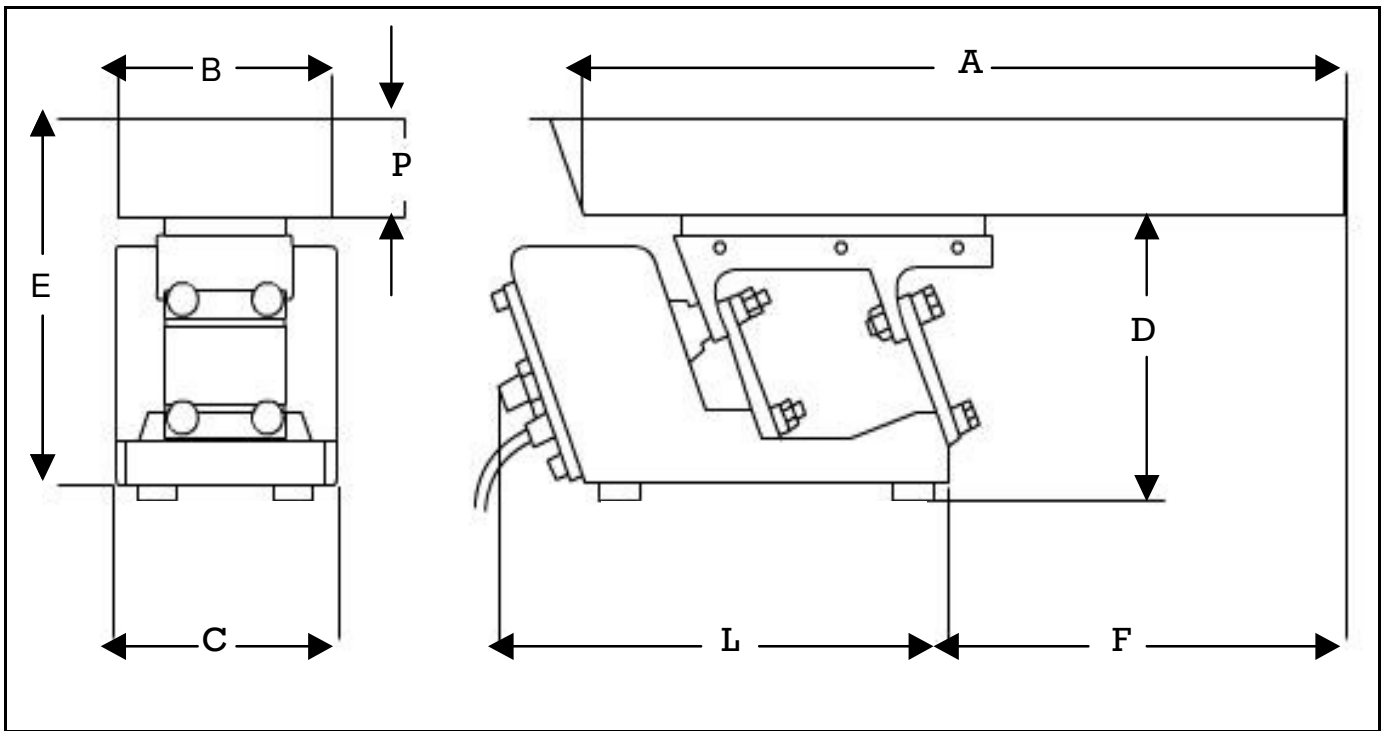
 II 2 G D / Ex e II T4 & Ex tD A21 IP67 T109° C

2 CHAPEL ROAD, PORTSLADE, BRIGHTON, BN41 1PF ENGLAND

Tel. +44(0) 1273 430977 Fax. +44 (0) 1273 430978

Web. [www.vibtec.com](http://www.vibtec.com) E-mail. [sales@vibtec.com](mailto:sales@vibtec.com)

## STANDARD TRAY DIMENSIONS

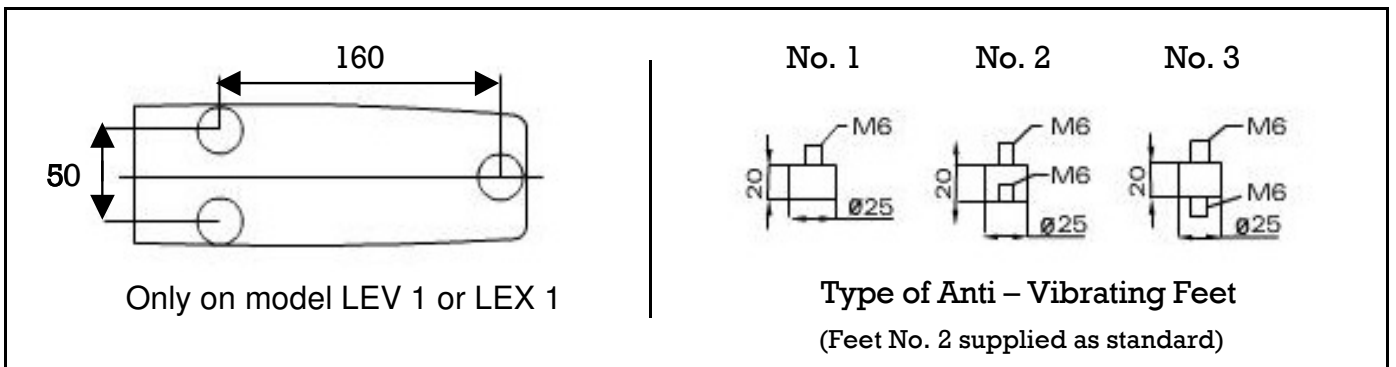
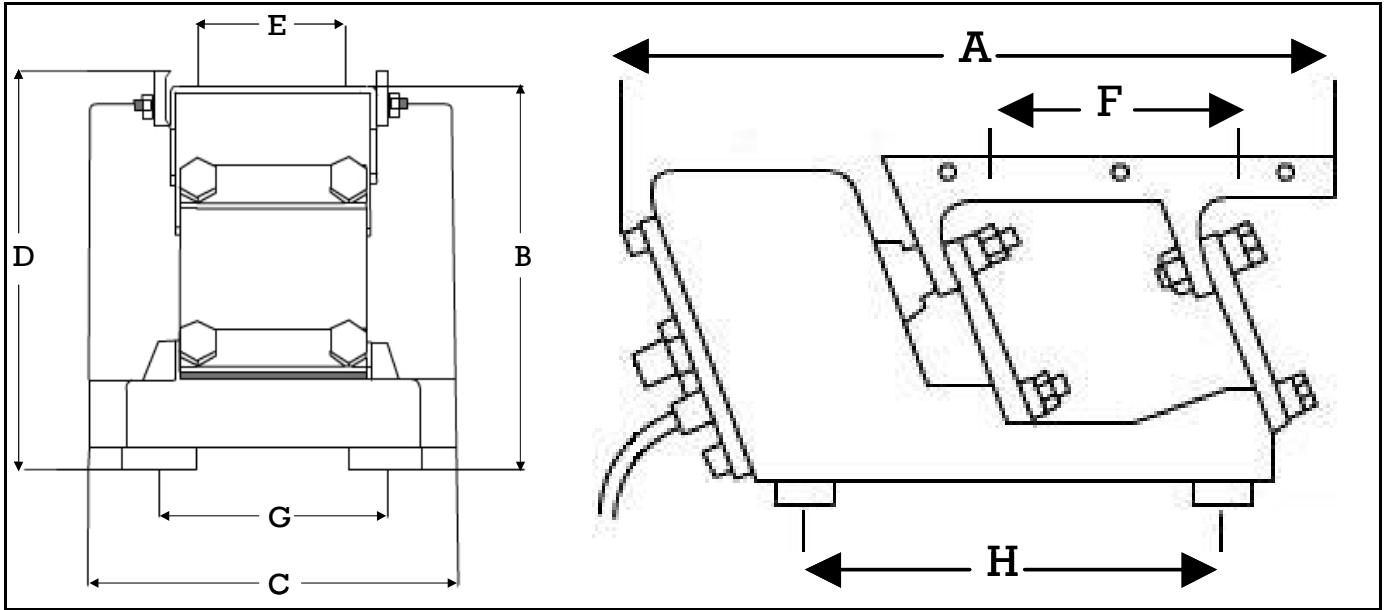


MODEL	A	B	C	D	E	F	L	P
<b>LEV 1</b>	300	80	78	116	136	117	230	40
<b>LEX 1</b>								
<b>LEV 2</b>	500	130	128	150	201	310	230	60
<b>LEX 2</b>								
<b>LEV 3</b>	700	150	148	174	245	460	293	80
<b>LEX 3</b>								
<b>LEV 4</b>	800	200	178	185	255	550	305	80
<b>LEX 4</b>								

MODEL	GREATEST LOAD OF THE TRAY (INDICATED)	CAPACITY (T/h)*
LEV 1 / LEX 1	1.5 KG	0.6
LEV 2 / LEX 2	3 KG	2
LEV 3 / LEX 3	7.5 KG	5
LEV 4 / LEX 4	10 KG	7

\*Calculated on dry sand density 1.6 t/m<sup>3</sup>

# TECHNICAL CHARACTERISTICS AND DIMENSIONS OF THE UNITS



MODEL	WEIGHT	A	B	C	D	E	F	G	H
LEV 1	4.6 KG	245	111	78	115	25	76	50	160
LEX 1									
LEV 2	13.1 KG	260	145	128	152	45	95	75	142
LEX 2								80	
LEV 3	19.1 KG	326	164	148	171	45	120	90	193
LEX 3									
LEV 4	26.2 KG	335	175	178	182	60	120	100	195
LEX 4								120	