



---

## HYDRAULIC ROTARY VIBRATORS

---

### MODEL HC

- Powered by a hydraulic motor
- Frequency range from 3000 to 5000rpm
- Centrifugal Force range from 1.7 kN to 158 kN
- Frequency adjustable by hydraulic pressure

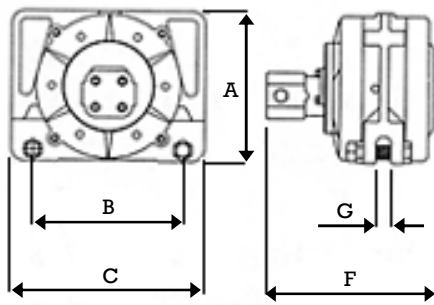
2 CHAPEL ROAD, PORTSLADE, BRIGHTON, BN41 1PF ENGLAND  
Tel. +44(0) 1273 430977 Fax. +44 (0) 1273 430978  
Web. [www.vibtec.com](http://www.vibtec.com) E-mail. [sales@vibtec.com](mailto:sales@vibtec.com)

**PERFORMANCE DATA**

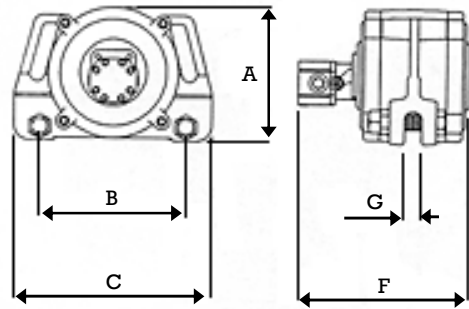
MODEL	START PSI	START BAR	SPEED RPM	FLOW LPM	FORCE KN	SPEED RPM	FLOW LPM	FORCE KN	SPEED RPM	FLOW LPM	FORCE KN	MAXIMUM WEIGHT OF MATERIAL IN SLOPED PORTION (Kgs)
C3-6A-2HC	80	5.5	3000	6.3	1.7	4000	8.5	3.0	5000	10.6	4.7	4850
	105	7.2	3000	6.3	2.3	4000	8.5	4.0	5000	10.6	6.3	6440
	130	9.0	3000	6.3	2.8	4000	8.5	5.1	5000	10.6	7.9	8070
	155	11	3000	6.3	3.4	4000	8.5	6.1	5000	10.6	9.5	9660
	200	14	3000	6.3	4.5	4000	8.5	8.1	5000	10.6	12.6	12900
	250	17	3000	6.3	5.7	4000	8.5	10.1	5000	10.6	15.8	16100
	300	21	3000	6.3	6.8	4000	8.5	12.1	5000	10.6	19.0	19300
D4.5-6-5HC	110	7.6	3000	19	6.8	4000	25	12.1	5000	32	19.0	19300
CC4.5-6-5HC	110	7.6	3000	19	6.8	4000	25	12.1	5000	32	19.0	19300
D4.5-8-5HC	140	9.7	3000	19	9.1	4000	25	16.2	5000	32	25.3	25800
CC4.5-8-5HC	140	9.7	3000	19	9.1	4000	25	16.2	5000	32	25.3	25800
D4.5-10-5HC	180	12.4	3000	19	11.4	4000	25	20.2	5000	32	31.6	32200
CC4.5-10-5HC	180	12.4	3000	19	11.4	4000	25	20.2	5000	32	31.6	32200
D7-12-8HC	120	8.3	3000	34	13.7	4000	46	24.3	5000	57	37.9	38600
CC7-12-8HC	120	8.3	3000	34	13.7	4000	46	24.3	5000	57	37.9	38600
D7-18-8HC	180	12.4	3000	34	20.5	4000	46	36.4	5000	57	56.9	58000
CC7-18-8HC	180	12.4	3000	34	20.5	4000	46	36.4	5000	57	56.9	58000
D7-25-8HC	250	17.2	3000	34	28.4	4000	46	50.6	5000	57	79.0	80500
CC7-25-8HC	250	17.2	3000	34	28.4	4000	46	50.6	5000	57	79.0	80500
D7-50-8HC	490	33.8	3000	34	56.9	4000	46	101.1	5000	57	158.0	161000
CC7-50-8HC	490	33.8	3000	34	56.9	4000	46	101.1	5000	57	158.0	161000

**PERFORMANCE DATA WITH ROLLER BEARINGS**

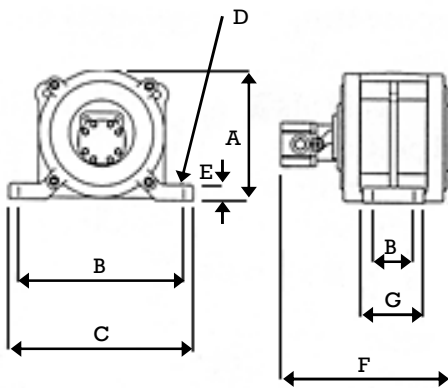
MODEL	START PSI	START BAR	SPEED RPM	FLOW LPM	FORCE KN	SPEED RPM	FLOW LPM	FORCE KN	SPEED RPM	FLOW LPM	FORCE KN	MAXIMUM WEIGHT OF MATERIAL IN SLOPED PORTION (Kgs)
D4.5-6-5HC-RB	110	7.6	6000	38	27.3	7000	45	37.2	7500	49	42.7	43500
CC4.5-6-5HC-RB	110	7.6	6000	38	27.3	7000	45	37.2	7500	49	42.7	43500
D4.5-8-5HC-RB	145	10.0	6000	38	36.4	7000	45	49.5	7500	49	56.9	58000
CC4.5-8-5HC-RB	145	10.0	6000	38	36.4	7000	45	49.5	7500	49	56.9	58000
D4.5-10-5HC-RB	175	12.1	6000	38	45.5	7000	45	61.9	7500	49	71.1	72500
CC4.5-10-5HC-RB	175	12.1	6000	38	45.5	7000	45	61.9	7500	49	71.1	72500



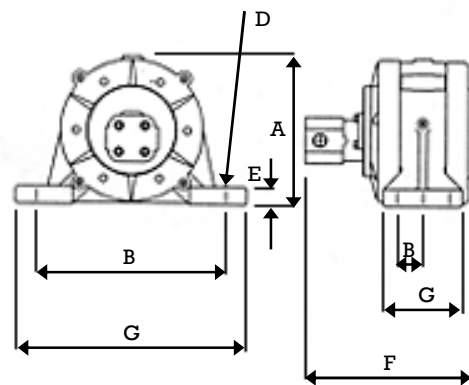
**CC7**



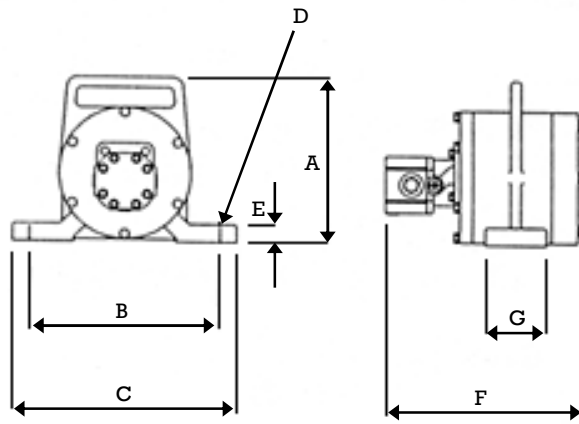
**CC4.5**



**D4.5**



**D7**



**C3**

**DIMENSIONS**

MODEL	A mm	B mm	C mm	D mm	E mm	F mm	G mm	Hydraulic Motor Port Size (2 ports)	Weight Kgs
C3	208	203	282	23	23	234	76	3/4 - 16	18
D4.5	213	254 x 46	307	17	25	274	104	3/4 - 16	22
CC4.5	218	234	320	-	-	274	28	3/4 - 16	25
D7	292	406 x 51	457	20	36	330	152	3/4 - 14 NPTF	45
CC7	292	292	376	-	-	343	28	3/4 - 14 NPTF	41