



ELECTRIC EXTERNAL VIBRATORS INCREASED SAFETY

MODEL MVSI-E

- Certificate No. LCIE 06 ATEX 6092 X - European Directive 94/9/EC
- Protection level: Ex e II, tD A21 IP66
- Temperature class: Gas - T3 (200°C) or T4 (135°C)
- Insulation Class F (155°C)
- Ambient temperature from -10°C to +40°C
- Power supply from 220V to 690V, three-phase, 50Hz or 60Hz
- With PTC rated thermistor heat detectors 130°C from size 70, on request for smaller sizes
- Thermistors with different temperatures and anti-condensation heaters available on request.

2 CHAPEL ROAD, PORTSLADE, BRIGHTON, BN41 1PF ENGLAND

Tel. +44(0) 1273 430977 Fax. +44 (0) 1273 430978

Web. www.vibtec.com E-mail. sales@vibtec.com

Eex e ELECTRIC EXTERNAL VIBRATORS 2 POLES 3000 RPM MVSI-E



MODEL	Frame Size	Temp. Class (G)	Temp. Class (D)	C/Force Kgs	Max. Power Rating (W)	Power Rating (W)	Max. Current (A) 400V 50Hz	t _E (s)	I _M /I _N	Fig.	A	B	C	D	E	F	G		I	L	M	N	Cable Entry thread X 1.5	Weight Kgs (50Hz)
																	Dia.	No.						
MVSI 3/100E-S02*	00	T3	120°C	121	180	120	0.33	30	2.68	A	211	153	125	62-74	106	24	9	4	46	103	100	117	M20	5.60
		T4			105	80	0.26	20	3.48															
MVSI 3/200E-S02*	01	T3	120°C	211	180	120	0.33	30	2.68	A	235	153	125	62-74	106	24	9	4	58	103	100	117	M20	6.40
		T4			230	172	0.48	12	4.20															
MVSI 3/300E-S02	10	T3	120°C	304	260	210	0.57	18	3.50	A	255	179	152	90	125	28	13	4	54	127	128	141	M20	9.70
		T4			350	210	0.57	8	5.60															
MVSI 3/500E-S02	20	T3	120°C	503	500	300	0.76	12	4.20	A	288	203	167	105	140	30	13	4	65	145	140	160	M25	14.8
		T4			390	290	0.72	8	5.52															
MVSI 3/800E-S02	30	T3	120°C	785	550	405	0.95	12	4.20	A	308	216	205	120	170	45	17	4	63	170	160	182	M25	21.0
		T4			460	290	0.76	11	4.37															
MVSI 3/1100E-S02	35	T3	120°C	1105	550	350	0.86	15	3.88	A	435	225	205	120	170	54	17	4	104.5	187	162	203	M25	23.0
		T4			700	500	1.24	6	6.40															
MVSI 3/1300E-S08	AF33	T4	200°C	1290	700	500	1.24	6	6.40	A	375	216.5	215	100	180	47	17	4	106	170	145	182	M25	27.0
		T4			700	500	1.24	6	6.40															
MVSI 3/1500E-S08	AF33	T4	200°C	1470	1010	720	1.62	6	9.29	A	430	246	230	140	190	54	17	4	99	207	190	225	M25	33.0
		T4			830	660	1.43	6	7.30															
MVSI 3/1600E-S02	50	T3	200°C	1545	1010	720	1.62	6	9.29	A	430	246	230	140	190	54	17	4	99	207	190	225	M25	34.0
		T4			1010	720	1.62	6	9.29															
MVSI 3/1800E-S02	50	T3	200°C	1802	1110	960	1.90	7	5.90	A	465	230	230	140	190	49	17	4	105	186	180	200	M25	48.7
		T4			1110	960	1.90	7	5.90															
MVSI 3/2010E-S90	AF50	T3	200°C	2059	1110	960	1.90	7	5.90	A	465	230	230	140	190	49	17	4	105	186	180	200	M25	49.6
		T4			1110	960	1.90	7	5.90															
MVSI 3/2310E-S90	AF50	T3	200°C	2316	1110	960	1.90	7	5.90	A	465	230	230	140	190	49	17	4	105	186	180	200	M25	49.6
		T4			3000	2600	4.75	5	8.00															
MVSI 3/5000E-S02	AF70	T3	135°C	5187	3000	2600	4.75	5	8.00	A	560	290	310	155	255	90	25	4	137	238	210	253	M25	109
		T4																						

* Available only in version 127/220V 50Hz three-phase, 200/346V 50Hz three-phase and 210/363V 60Hz three-phase

t_E (s) = set time t_E from IEC/EN 60079-7. I_M/I_N = ratio between star-up current and max. current.

Eex e ELECTRIC EXTERNAL VIBRATORS 4 POLES 1500 RPM MVSI-E



MODEL	Frame Size	Temp. Class (G)	Temp. Class (D)	C/ Force Kgs	Max. Power (W)	Power Rating (W)	Max. Current (A) 400V 50Hz	t _E (s)	I _M /I _N	Fig.	A	B	C	D	E	F	G		I	L	M	N	Cable Entry thread X 1.5	Weight Kgs (50Hz)
																	Dia.	No.						
MVSI 15/200E-S02	10	T3 T4	120°C	213	203 170	90 94	0.45 0.39	35 28	2.04 2.34	A	301	179	152	90	125	28	13	4	77	127	128	141	M20	12.5
MVSI 15/400E-S02	20	T3 T4	120°C	412	300 285	200 180	0.57 0.52	18 16	3.33 3.63	A	344	203	167	105	140	30	13	4	93	145	140	160	M25	19.0
MVSI 15/550E-S02	20	T3 T4	120°C	552	300 285	200 180	0.57 0.52	18 16	3.33 3.63	A	386	203	167	105	140	30	13	4	114	145	140	160	M25	20.4
MVSI 15/700E-S02	30	T3 T4	120°C	720	460 360	310 240	0.86 0.72	17 12	3.5 4.2	A	394	216	205	120	170	45	17	4	106	170	160	182	M25	27.5
MVSI 15/1100E-S02	35	T4	120°C	1045	370	285	0.81	13	4	A	435	225	205	120	170	54	17	4	117.5	187	162	203	M25	35.0
MVSI 15/1410E-S02	40	T3 T4	120°C	1413	900 630	660 460	1.38 1.05	13 8	4 5.36	A	448	246	230	140	190	54	17	4	116	207	190	225	M25	44.0
MVSI 15/1710E-S02	50	T3 T4	150°C	1798	1100 630	730 480	1.90 1.33	9 5.5	4.95 7	A	500	246	230	140	190	54	17	4	134	207	190	225	M25	51.0
MVSI 15/2000E-S02	50	T3 T4	150°C	2054	1100 630	730 480	1.90 1.33	9 5.5	4.95 7	A	574	246	230	140	190	54	17	4	171	207	180	225	M25	55.5
MVSI 15/2410E-S08	60	T3 T4	150°C	2420	1600 1150	1340 880	3.04 2.47	7 5.5	6 7.5	A	537	272	275	155	225	70	22	4	137	238	210	253	M25	71.0
MVSI 15/3000E-S08	60	T3 T4	135°C	3106	1280 1150	1000 900	3.14 2.85	5.5 5.5	7.42 8.16	A	617	272	275	155	225	70	22	4	177	238	210	253	M25	80.0
MVSI 15/3810E-S02	70	T3 T4	135°C	3640	2200 1850	1780 1500	3.71 3.14	6 6	7.17 8.42	A	584	321	310	155	255	77	23.5	4	137	277	215	295	M25	119
MVSI 15/4300E-S02	70	T3 T4	135°C	4326	2200 1850	1780 1500	3.71 3.14	6 6	7.17 8.42	A	666	321	310	155	255	77	23.5	4	178	277	215	295	M25	123
MVSI 15/5010E-S02	80	T3	135°C	5007	3200	2560	5.70	6	7	A	630	347	340	180	280	80	26	4	150	303	240	320	M32	161
MVSI 15/6000E-S02	80	T3	136°C	5690	3200	2560	5.70	6	7	A	680	370	390	200	320	90	28	4	160	330	270	350	M32	163.5
MVSI15/9500E-S02	97	T3	136°C	8416	7300	5925	11.6	5.5	7	C	862	437	460	125	380	35	39	6	230	387	320	414	M32	317

Ex e ELECTRIC EXTERNAL VIBRATORS 6 POLES 1000 RPM MVSI-E



MODEL	Frame Size	Temp. Class (G)	Temp. Class (D)	C/Force Kgs	Max. Power Rating (W)	Max. Current (A) 400V 50Hz	t _E (s)	I _A /I _N	Fig.	A	B	C	D	E	F	G		H	I	L	M	N	Cable Entry thread X1.5	Weight Kgs (50Hz)	
																Dia.	No.								
MVSI 10/200E-S02	20	T4	120°C	183	185	100	0.48	25	2.72	A	344	203	167	105	140	30	13	4	82.5	93	145	140	160	M25	19.0
MVSI 10/310E-S02	30	T4	120°C	321	320	201	0.67	25	2.81	A	394	216	205	120	170	45	17	4	93.5	106	170	160	182	M25	27.5
MVSI 10/550E-S02	35	T4	120°C	512	350	240	0.71	26	2.40	A	435	225	205	120	170	54	17	4	104.5	117.5	187	162	203	M25	36.5
MVSI 10/810E-S08	40	T3 T4	135°C	809	680 500	448 290	1.33 1.05	25 17	2.78 3.54	A	500	246	230	140	190	54	17	4	116	134	207	190	225	M25	48.0
MVSI 10/1110E-S08	50	T3 T4	135°C	1132	750 480	550 300	1.57 1.24	19 13	3.33 4.23	A	574	246	230	140	190	54	17	4	116	171	207	190	225	M25	58.0
MVSI 10/1400E-S08	50	T3 T4	135°C	1424	750 480	550 300	1.57 1.24	19 13	3.33 4.23	A	574	246	230	140	190	54	17	4	116	171	207	190	225	M25	66.0
MVSI 10/1610E-S08	60	T3 T4	135°C	1638	1100 850	825 615	2.09 1.81	15 10	3.63 4.73	A	617	272	275	155	225	70	22	4	130	177	238	210	253	M25	83.0
MVSI 10/2100E-S08	60	T3 T4	135°C	2154	1500 1050	940 750	2.85 2.19	9 8	4.50 4.89	A	617	272	275	155	225	70	22	4	130	177	238	210	253	M25	93.0
MVSI 10/2610E-S02	70	T3	135°C	2601	1960	1580	3.90	8	5.31	A	666	321	310	155	255	77	23.5	4	157	178	277	215	295	M25	130
MVSI 10/3000E-S02	70	T3 T4	135°C	3007	2200 1770	1630 1350	4.28 3.71	8 5	4.82 5.56	A	712	321	310	155	255	77	23.5	4	157	201	277	215	295	M25	145
MVSI 10/3810E-S02	80	T3 T4	135°C	3826	2200 2000	1575 1500	4.85 4.28	7 6	5.88 6.66	A	734	347	340	180	280	80	26	4	165	200	303	240	320	M32	188
MVSI 10/4700E-S02	80	T3 T4	135°C	4701	3100 2550	2500 2100	6.18 5.42	10 6	5.23 5.96	A	796	347	340	180	280	80	26	4	165	233	303	240	320	M32	204
MVSI 10/5150E-S02	80	T3 T4	135°C	5230	3100 2550	2500 2100	6.18 5.42	10 6	5.23 5.96	A	826	347	340	180	280	80	26	4	165	248	303	240	320	M32	225
MVSI 10/5200E-S02	90	T3	135°C	5208	3500	2590	6.65	10	4.64	A	744	370	390	200	320	90	28	4	180	192	330	270	350	M32	238
MVSI 10/5700E-S02	90	T3	135°C	5650	3500	2590	6.65	10	4.64	A	840	370	390	200	320	90	28	4	180	240	330	270	350	M32	240
MVSI 10/6600E-S02	97	T3	135°C	6799	4200	3360	7.60	5.3	6.67	C	750	437	460	125	380	35	39	6	215	174	387	320	414	M32	285
MVSI 10/10000E-S02	97	T3	135°C	9695	5400	4500	9.98	7	6.00	C	862	437	460	125	380	35	39	6	215	230	387	320	414	M32	381
MVSI 10/11200E-S02	97	T3	135°C	11160	5400	4500	9.98	7	6.00	C	912	437	460	125	380	35	39	6	215	255	387	320	414	M32	405

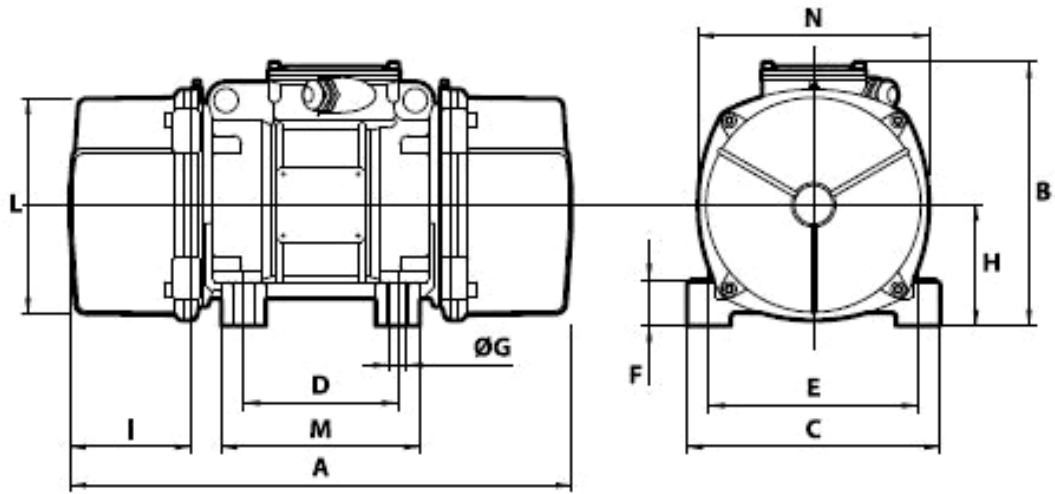
Ex e ELECTRIC EXTERNAL VIBRATORS 8 POLES 750 RPM MVSI-E



MODEL	Frame Size	Temp. Class (G)	Temp. Class (D)	C/Force Kgs	Max. Power Rating (W)	Max. Current (A) 400V 50Hz	t _E (s)	I _R /I _N	Fig.	A	B	C	D	E	F	G		H	I	L	M	N	Cable Entry thread X 1.5	Weight Kgs (50Hz)
																Dia.	No.							
MVSI075/150E-S02	20	T3	130°C	104	230	0.67	25	2.00	A	344	203	167	105	140	30	13	4	82.5	93	145	140	160	M25	19.0
MVSI075/250E-S02	30	T3	130°C	181	350	0.86	25	2.47	A	394	216	205	120	170	45	17	4	93.5	106	170	160	182	M25	27.5
MVSI075/400E-S02	35	T4	120°C	288	280	0.57	30	1.66	A	435	225	205	120	170	54	17	4	104.5	117.5	187	162	203	M25	36.5
MVSI075/660E-S08	40	T3	120°C	456	500	1.14	30	2.15	A	500	246	230	140	190	54	17	4	116	134	207	190	225	M25	48.0
MVSI075/910E-S08	50	T3 T4	120°C	637	600 450	1.33 1.14	30 25	2.14 2.50	A	574	246	230	140	190	54	17	4	116	171	207	190	225	M25	58.0
MVSI075/1310E-S08	60	T3	150°C	922	950	2.09	30	2.63	A	617	272	275	155	225	70	22	4	130	177	238	210	253	M25	83.0
MVSI075/2110E-S02	70	T3	135°C	1463	1500	3.61	15	4.18	A	666	321	310	155	255	77	23.5	4	157	178	277	215	295	M25	130
MVSI075/3110E-S02	80	T3	135°C	2152	2000	5.13	13	3.96	A	734	347	340	180	280	80	26	4	165	202	303	240	320	M32	188
MVSI075/3800E-S02	80	T3	135°C	2645	2500	5.70	14	4.00	A	796	347	340	180	280	80	26	4	165	233	303	240	320	M32	204
MVSI075/4200E-S02	90	T3	135°C	2930	2630	6.18	14	3.84	A	744	370	390	200	320	90	28	4	180	192	330	270	350	M32	238
MVSI075/5300E-S02	90	T3	135°C	3672	3520	7.79	14	3.80	A	840	370	390	200	320	90	28	4	180	240	330	270	350	M32	268
MVSI075/10000E-S02	97	T3	135°C	7792	5100	11.4	17	3.50	C	1002	437	460	125	380	35	39	6	215	300	387	320	414	M32	438

t_E (s) = set time t_E from IEC/EN 60079-7. I_R/I_N = ratio between start-up current and max. current.

4 Hole Mounting
Fig. A



6 Hole Mounting
Fig. C

