

Before putting into operation, make sure that the equipment does not show any signs of exterior damage.

Connect the **VPI 37** to a suitable 42v - 48v or 110v [250v] / 200 Hz frequency converter. The CEE-type plug connector fits most commercially available transformers.

Caution: Converters with output voltages different from those allowed for the equipment can lead to the destruction of the equipment or considerably impair its performance.

For model with hand switch: Immerse the vibratory poker completely in the concrete and operate hand switch. As soon as the desired compatibility is reached, withdraw equipment and switch off.

For model with automatic switch: Immerse the vibratory poker completely in the concrete. As soon as an angle of inclination of about 30° is reached, the automatic switch installed in the connection hose (at approx. 60 cm above the connection) is triggered. As soon as the desired compatibility is reached, withdraw equipment again and put that section of the hose that contains the switch in a horizontal position (for example by laying it on the ground) to cut off the vibrator.

For model VPK 37 with integral Inverter Control: Connect the VPK 37 to a suitable 110v 1ph 50Hz supply. The CEE type plug is standard for 110v connection. The VPK 37 is fitted with a special version of the VPI 37, using a different stator, otherwise mechanically its the same and can be serviced as described below.

The Inverter Control is a sealed unit and no servicing is necessary or possible.

NOTE: If the VPK range is being run off a generator the generator must be a regulated type. The electronics of the VPK switch box will only accept +/- 10% voltage variation. Spikes of over 150 volts will damage the switch box. Impact sensitive electronics are used in the switch box. Impacts over 100m/s² may damage the unit.

To ensure proper cooling, all poker heads should be completely immersed in the concrete.

Where this doesn't happen, it increases the risk of the integrated thermo - switch automatically cutting down the equipment to protect it from overheating. If this should happen, please allow time for the equipment to cool down before restarting. Immersing in a bucket of cold water would speed up this process.

Danger: HEALTH HAZARD Do not handle or touch vibrating part during operation

Dismantling. The replacement of defective components as well as any subsequent assembly must be carried out by skilled technicians. **Always disconnect equipment from power supply.**

To open vibratory poker, clamp the stator body [9] firmly in a pipe vice.

Release locking weld points between nosepiece (17 / 18) and vibrator housing (13). This thread has been assembled using 'Loctite' or similar thread sealant. To release, heat the area, to a temperature of 100° C –120° C, at the threaded point and unscrew steel head by using a pipe wrench (right-hand thread).

Remove spring washers (15) and distance washer (14). then gently tap side of housing with block of wood to release interior components (rotor complete, needle bearing sleeve and stator) . Screw M8 threaded studding into the extraction nut (8) and withdraw needle bearing (9) out of stator (11).

To continue dismantling the rotor, remove circlip (4), draw off bearing (3) and slide off distance sleeve (2). Both the needle bearing (6) and the inner raceways (10,7) can now be drawn off the rotor (1).

The assembly must be carried out in reverse order. Always pay particular attention to the correct orientation .of the spring washers (see exploded view).

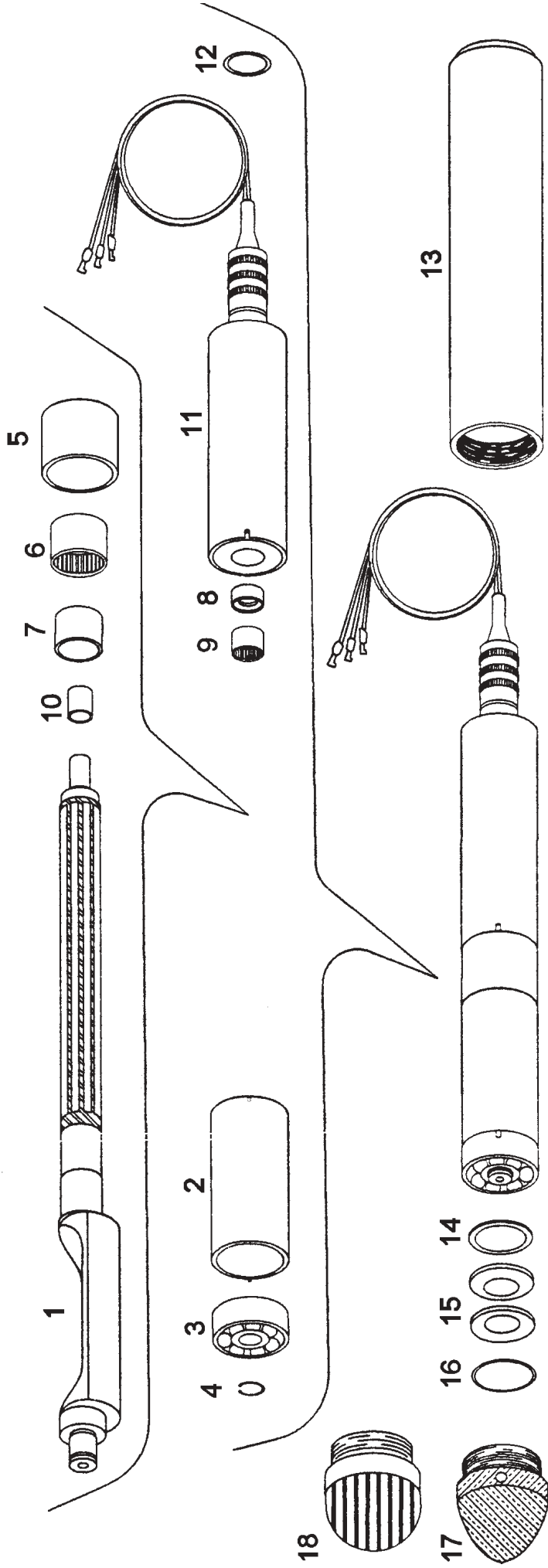
When re-assembling, threads must be treated with 'Loctite ' or similar thread sealant. If possible re-weld locking points.

Lubrication: The VPI 37 is oil-lubricated. Quantity 4 cm³

Technical Data:

	VPI 37	VPK 37
Diameter	39mm	39mm
Length head	360 mm	360mm
Weight (head only)	2.8 kgs	5.7 kg (Head & Control less hose)
Input (voltage)	42- 48v / 200 Hz	110v 1ph 50Hz
Output (power)	0.85 kVA	0.85 kVA
Speed	12.000 RPM	12.000 RPM
Compaction rate	15 m ³ /h	15 m ³ /h
Length /rubber hose	5m	5m
Length /supply cable	10m	10m

VPI 37



Item	Description	Ref. No.	Item	Description	Ref. No.
1	Rotor / 37H	R1050	11	Stator 42v / 37	R1057
2	Distance sleeve / 37	R1051	11	Stator 115v / 37	R1058
3	Ball bearing / 37	R1052	11	Stator 250v / 37	R1059
4	Circlip / 37	R1053	12	Outer 'O' ring stator / 37	R1060
5	Needle bearing sleeve / 37	R1054	13	Vibrator housing / 37	R1061
6	Needle bearing / 37	R1055	14	Distance washer 0.5 mm / 37	R1062
7	Inner raceway of needle bearing / 37	R1056	15	Belleville spring washer / 37	R1063
8	Extraction nut / 37	R1014	16	'O' ring of nosepiece / 37	R1064
9	Needle bearing / 37	R1012	17	Steel nosepiece / 37	R1065
10	Inner raceway of needle bearing / 37	R1013	18	Rubber nosepiece (vulcan) / 37	R1066