

**SAFETY DEVICES**

**Automatic Quick Acting Shut-Off Device HDS17**



**WITT Automatic Quick Acting Shut-Off Devices (slam shut valves) for reliable protection against dangerous decomposition of acetylene in high pressure pipelines in accordance to EN ISO 14114 Certified and under surveillance**  
**Every Arrestor 100% tested.**

**The best Automatic Quick Acting Shut-Off Devices in the world**

- a pressure sensitive piston valve stops explosive decomposition of acetylene
- immediately cuts off the gas supply in case of decomposition of acetylene

**Operation / Usage**

- as an Automatic Quick Acting Shut-Off Device according to EN ISO 14114 in high pressure pipelines, which are immediately supplied by more than six cylinders
- WITT Automatic Quick Acting Shut-Off Devices may be mounted in any position / orientation

- the maximum ambient / working temperature is 70 °C / 158 °F

**Maintenance**

- it is recommended that an annual body leakage test is performed
- Automatic Quick Acting Shut-Off Devices are only to be serviced by the manufacturer

**Approvals**

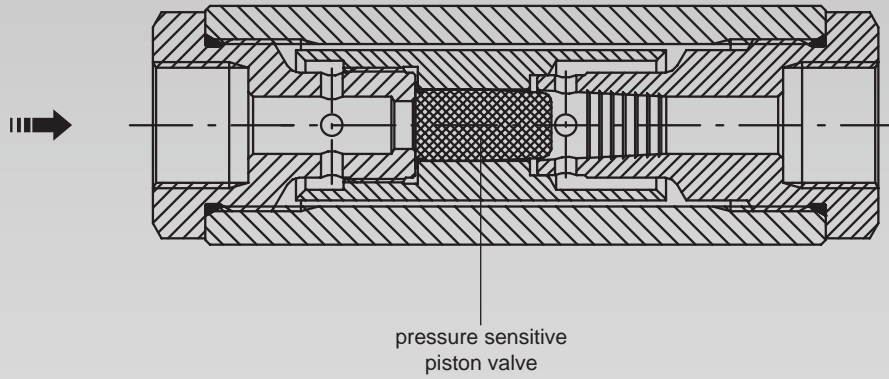
Manufactured in accordance to EN ISO 15615  
 Company certified according to ISO 9001:2000 and ISO 14001

Product Information

Technical Data

Model	Max. working pressure [bar]	Materials	Weight [g]	Connection [inch]	Order-No.
HDS17 BAM/ZBA/003/04	Acetylene (A) 25.0	Aluminium / galvanised steel, chromed, Elastomer	1797	G 3/4 RH	017.001

Other connections available on request



**HDS17**

