

The Construction Site Safety Audit System has been specifically developed for use on handheld, desktop and laptop computers, by Safety Advisors, Managers, Consultants; Planning Supervisors; Clients; Architects; Engineers; Site Agents; Contractors and others responsible for overseeing construction work.

Through a series of linked screens, the software addresses over 80 key health, safety & welfare issues, which are grouped under the following sections:

- Welfare Facilities
- Safety Management Procedures
- Site Safety Controls
- Traffic Management (pedestrian & vehicular)
- Storage Areas
- Working at Height
- Site Management
- Plant and Equipment
- General Site Works
- Use of personal protective equipment

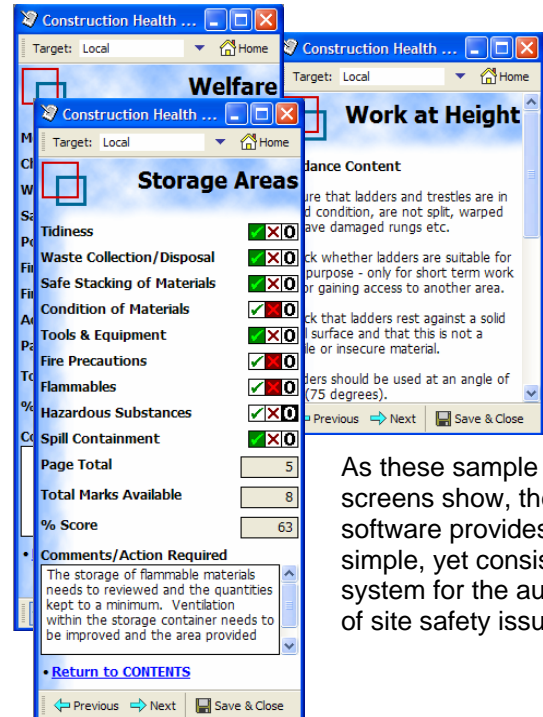


Each sections has on average 8 items which are scored as **Satisfactory**, **Unsatisfactory** or **Not Applicable** by simply clicking the appropriate symbol: . The software does the rest and calculates page totals, and percentage scores for individual sections and the audit as a whole.

Key Features & Benefits Include:

- Easy to use graphical interface which requires no special training or knowledge to use
- Operates within the familiar Microsoft Office environment
- The facility to use the software on desktop, laptop and handheld computers
- Automated calculation of audit scores /percentages for each section and for the audit as a whole
- A simple point and click operating system
- Additional information & guidance notes are provided by simple pop-up boxes, this is particularly useful for inexperienced users and where the auditor has little knowledge in a particular area
- Facility to export data into MS Excel to enable data to be plotted onto charts and graphs
- Each section includes a space for recording notes and comments relating to the findings
- Comes complete with Pocket PC Creations Software

State of the Art Mobile Solutions



As these sample screens show, the software provides a simple, yet consistent system for the auditing of site safety issues.

The audit software also holds information about the project, persons present during the audit, the weather, the reason for the audit and other general information. All information is held in its own internal database, this links via the desktop version of Pocket PC Creations, to other packages for the presentation of data. This includes HTML and MS Excel. Included with the software are a series of Excel spreadsheets that enable users to graphically view the results of audits.

System Requirements:

- Minimum processor - Pentium III or newer
- Recommended 128MB RAM or higher
- CD ROM drive
- Operating system Windows 95/98/2000/XP/Vista
- Microsoft Excel 97 or newer
- Windows for Mobile Pocket PC
- Microsoft Activesync (Pocket PC communications Software)

For further information visit:
www.SafetyServicesDirect.com

Or Email:
Info@SafetyServicesDirect.com

**Only
£149.00**
(Exc. VAT)