



Pictura

Fibre cement cladding

Introduction

The Pictura coating system incorporates an additional surface treatment for Fibre Cement panels. The main characteristic of this treatment is the hard, smooth, silky matt surface.

The UV cured top layer offers good protection against many types of staining and mechanical damage during construction.

Whilst the Pictura surface is smooth and easily cleanable, it also provides protection against graffiti produced by common aerosol and other paints. Graffiti can be eliminated with common graffiti removers.



Advantages

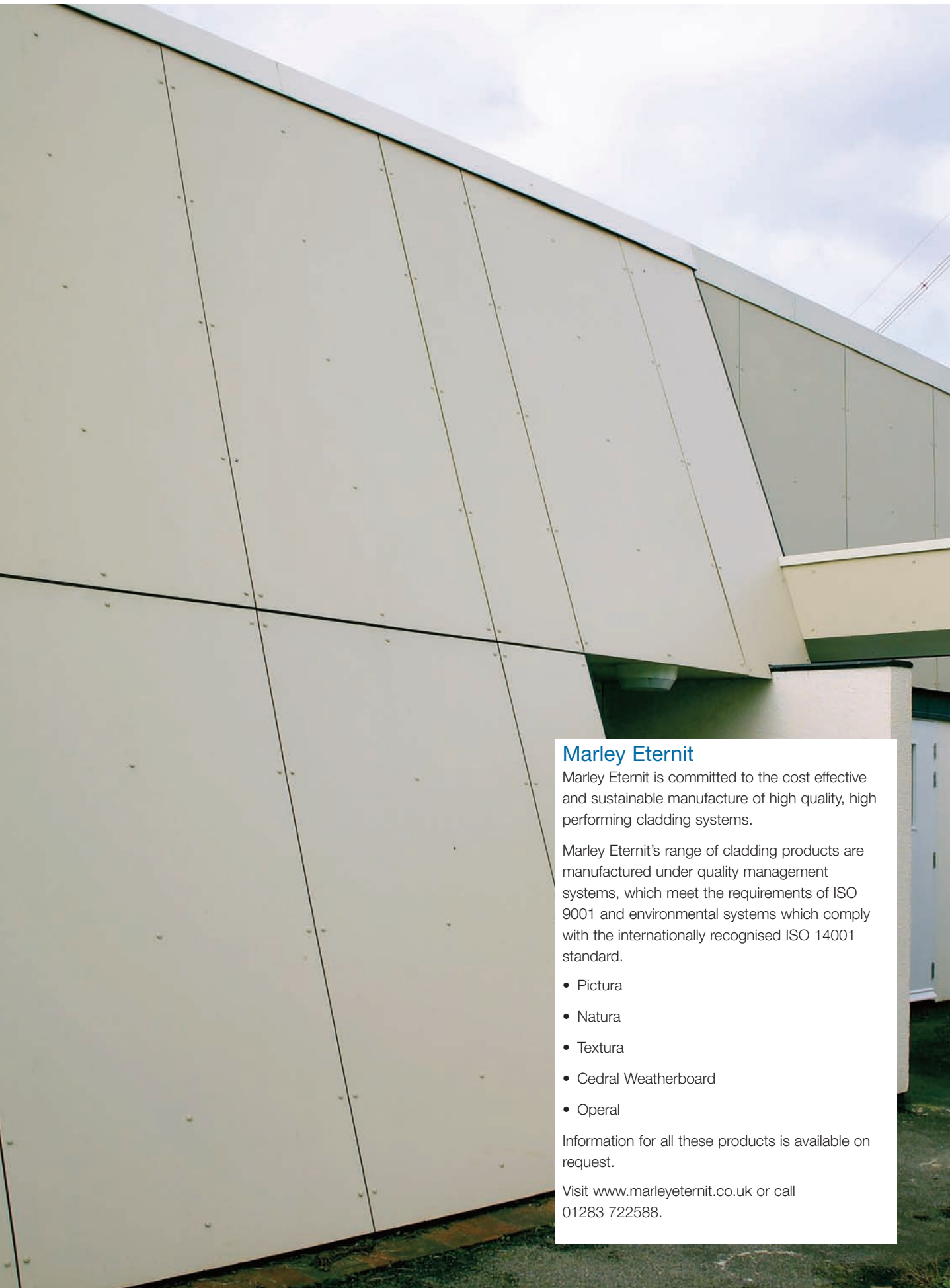
- ✓ Can achieve an A⁺ rating as defined in the BRE Green Guide*
- ✓ Pictura panels have an installed life expectancy of at least 50 years
- ✓ Non-combustible classified to EN 13501-1
- ✓ Class 0 fire performance
- ✓ Good noise insulation properties
- ✓ Excellent weather resistance
- ✓ Resistant against living organisms (mould, bacteria, insects, etc.)
- ✓ Chemical resistant
- ✓ Environmentally friendly, no harmful gas emissions
- ✓ Easy to fix
- ✓ Strong and rigid panels
- ✓ Anti-graffiti protection as standard
- ✓ No routine maintenance necessary

Applications

- ✓ Rainscreen cladding
- ✓ Weather boarding
- ✓ Outdoor planking for sandwich elements
- ✓ Window cills and recesses
- ✓ Cladding for lintels (doors, windows)
- ✓ Interior wall lining
- ✓ Soffits
- ✓ Fascias
- ✓ Bargeboards

* Based on generic rating for autoclaved fibre cement single sheet - (Element Ref: 80623042, 806230422, 806230447, 806230450)





Marley Eternit

Marley Eternit is committed to the cost effective and sustainable manufacture of high quality, high performing cladding systems.

Marley Eternit's range of cladding products are manufactured under quality management systems, which meet the requirements of ISO 9001 and environmental systems which comply with the internationally recognised ISO 14001 standard.

- Pictura
- Natura
- Textura
- Cedral Weatherboard
- Operal

Information for all these products is available on request.

Visit www.marleyeternit.co.uk or call 01283 722588.

Technical data



Standards

The technical properties of Pictura sheets are in accordance with the prescriptions of BS EN 12467: 2004, Category A, Class 3. The panels are manufactured to ISO 9001 and ISO 14001.

Manufacture

Pictura panels are produced on a Hatschek machine and are pressed and air-dried. The surface is smooth, not glossy, with an acrylic coating and a UV hardened top layer, to produce a strong impact and dirt resistant finish. This finish gives a hard surface, offering scratch resistance and 'anti graffiti' protection from most types of paint.

Finishing

Cut edges of Pictura must be sealed with Luko solution.

Availability

Colours marked 'standard' (pages 6-7) are the most popular and are either kept in stock or are usually available on short lead times.

All other colours are made to order and will be subject to longer lead times.

Dimensions

Nominal thickness	8/12mm
Sheet sizes*	2500 x 1250mm 3100 x 1250mm
Tolerance on thickness	±10%
Nominal weight:	15.4 kg/m ² (8mm) 22.8 kg/m ² (12mm)

* These are the maximum sheet sizes available after trimming by a fabricator.

Properties (air dry)

Density	1650 kg/m ³
Bending strength:	
Longitudinal	26N/mm ²
Transverse	17N/mm ²
Modulus of elasticity	15,000N/mm ²
Porosity	20%
Hygroscopic movement	1.0mm/m
Co-efficient of linear expansion	10 x 10 ⁻⁶ m/mK
Thermal conductivity	0.6 W/mK
Water vapour resistance coefficient:	
(0-50 % rel. humidity)	350
(50-100 % rel. humidity)	140
Frost resistance	To DIN 52104
Reaction to fire:	
Building Regulations	Class 0
EN 13501-1	A2-s1-d0
Moisture content	8 %
Temperature – durability	rated up to 80 °C
Environmental Product Declaration	according to ISO 14025 (EPD)

Fixing overview

In facade applications, Pictura can be screwed to vertical timber battens or riveted to an aluminium sub-frame.

Concealed fixings

In facade applications, where a smooth, unbroken surface is required, Marley Eternit offer a choice of concealed fixing systems.

Batten sizing

At panel joints: min 100 x 38mm.

At intermediate points: min 50 x 38mm.

Batten rail spacing

Maximum batten centres 600mm. For 1.5kN/m² wind load.

Bonding for secret fixing

If Pictura is to be glued, the adhesive must be used in accordance with the application guidelines and guarantee conditions of the adhesive supplier (SikaTack-Panel). Further information is available from Marley Eternit.

Screwing

Stainless steel screws with mushroom head and torx drive.

Screws can be used in pre-drilled holes only.

- 5.5 x 35mm for 8mm thickness.
- Screws must be used in conjunction with top hat sleeve.

Blind riveting

Aluminium rivets and associated cylindrical spacer sleeve in 9.5 mm holes.

Aluminium rivets:

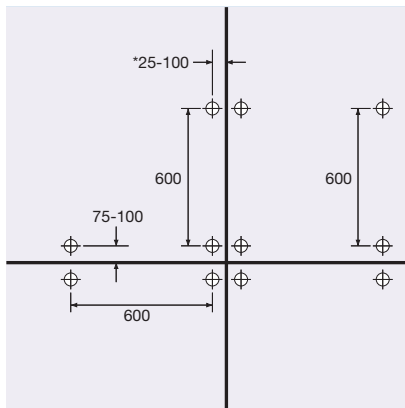
- 4 x 18 – K15mm for 8mm thickness.
- Special rivet-setting tool must be used.

Mechanical secret fix

In facade applications where a smooth unbroken surface is required, Marley Eternit offer a concealed mechanical fixing system. Hangers are fixed to the rear face of 12mm thick Pictura panels. The hangers hook onto horizontal rails, which, in turn, are fixed to vertical rails.

Screw fixing

Maximum screw fixing centres for 8mm Pictura panels



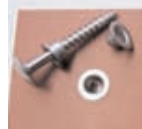
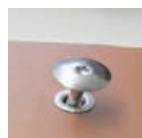
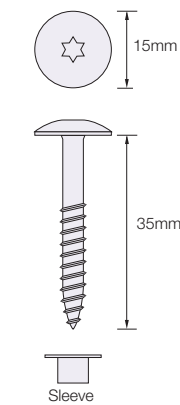
Larger battens are required if panel fixings are located more than 25mm from the vertical edge.

Hole sizes

Pre-drilled holes in the panels should be 7mm.

Notes

- 1 In all cases it is important to have the corner fixings staggered at unequal spacings from the two edges.
- 2 A minimum 8-10mm gap should be allowed between all panels.

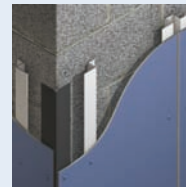


Other fixing systems and design detailing

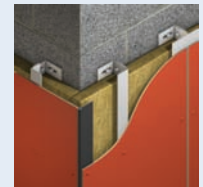
Pictura can be fixed using the systems below.



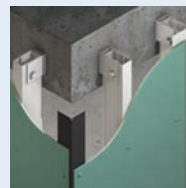
Timber battens



Omega and Zeds



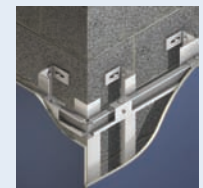
Ventisol



Ventispan



Structural bonding
(restrictions apply)



Mechanical secret fix

Application Instructions

Marley Eternit offer a full range of Application Instructions for their fixing systems, setting out detailed design and installation data.

Please contact the Technical Advisory Service for further information on 01283 722588.

Colour range



PU 041 **Black**



PU 241 **Grey**



PU 242 **Grey**



PU 941 **Brown**



PU 943 **Brown**



PU 441 **Blue**



PU 341 **Red**



PU 741 **Orange**



PU 243 Grey



PU 141 White



PU 543 Green



PU 541 Green



PU 542 Green



PU 842 Beige



PU 841 Beige



This publication is based on the latest data available at the time of printing. Due to product changes, improvements and other factors, the Company reserves the right to change or withdraw information contained herein without prior notice. For specific applications users should refer to the Technical Advisory Service and relevant Standards and Codes of Practice for guidance.

The photography shown in the document should not necessarily be taken as recommendations of good practice. The printing process restricts the exact representation of colours. For true colour reference, please request product samples.

Sitework guidance

Cutting

When cutting fibre cement, saw blades of the highest quality should be used; diamond tipped circular saws: diamond tipped for Mafell panel saws; ABC saw blades for compass saws; tungsten carbide black jigsaw blades. Silicon carbide and diamond cutting discs should not be used for cutting fibre cement.

Cutting and feeding speeds will be dependent on the power tool used and by practical trial.

Drilling

For predrilling panels cleanly and accurately, we recommend using HSS (high speed steel) drills or tungsten carbide-tipped drills.

Hole diameter will depend upon the framing to be fixed back to timber or metal framing.

Immediately remove dust from cutting/drill holes using a vacuum or soft brush or dry soft and clean cloths. It is advisable to coat the undercut anchor holes with Luko solution.

Finishes

Cut edges of Pictura must be sealed with Luko solution.

Health and safety

Fibre cement is a modern, reinforced construction material made from natural and environmentally-neutral raw materials, predominantly Portland cement.

Transport conditions

The panels should be moved in stacks using a fork-lift truck or a crane. Individual panels should be carried vertically and should not be set down on corners.

Stacks should be transported under a waterproof cover.

Storage and handling

Pictura should be stored and transported on a flat, dry surface which gives support over the entire area. Stack to a maximum height of 1.0 metre, preferably on pallets, or on dry wooden slats placed sufficiently close to avoid sagging. The panels should be covered, for example with a heavy-duty tarpaulin, to protect against dampness, weather and dirt. The covering must remain in place at all times for stacked material.

Individual panels should be stored on edge with air circulation on both sides. If only one side of a panel dries out or becomes damp this can lead to deformation. Paper or foil is inserted between front surfaces to protect the high quality finish, and this should be kept in place when restacking. Stack the panels front face to front face or rear surface to rear surface. Each panel should be lifted from the pile by two workers, removed without scraping the other panels and then carried vertically. Pictura panels should always be carried upright.

Services & support



Technical Advisory Service

Marley Eternit provides a free Technical Advisory Service which is staffed by personnel with specialist knowledge of the use of all Marley Eternit products and systems.

- T 01283 722588
- E info@marleyeternit.co.uk

Marley Eternit offer a comprehensive range of products, including:

- ✓ Clay and concrete plain and interlocking tiles
- ✓ Fibre cement slates
- ✓ Interlocking slates
- ✓ Ventilation and dry fix accessories
- ✓ Decorative cladding
- ✓ Profiled sheeting
- ✓ High performing interior and exterior building boards

Information for all these products is available on request.

- www.marleyeternit.co.uk T 01283 722588



Customer Services

Marley Eternit is committed to providing outstanding customer care and is staffed by experienced personnel in departments dedicated to providing the following services:

Advice, literature and samples

- All current product and technical literature can be downloaded from www.marleyeternit.co.uk/downloads

To request samples and advice:

- T 01283 722588 E info@marleyeternit.co.uk

Quotations and ordering information

- T 01283 722588 E info@marleyeternit.co.uk

Stockist information

To find details for stockists of Marley Eternit products:

- T 01283 722588 E info@marleyeternit.co.uk

Customer Services

Tel 01283 722588 Fax 01283 722219 E-Mail info@marleyeternit.co.uk

www.marleyeternit.co.uk



an **Etex** GROUP company