

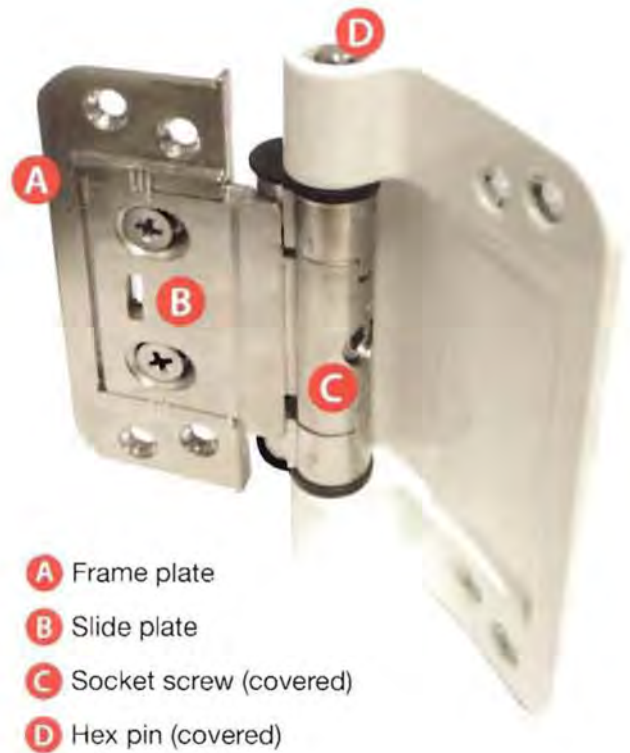


3D adjustable butt hinge

Tools required

- Drill
- Suitable pozi drive bit
- Flat screw driver (for compression adjustment)
- 4mm allen Key
- 6mm socket spanner (for side-to-side adjustment)

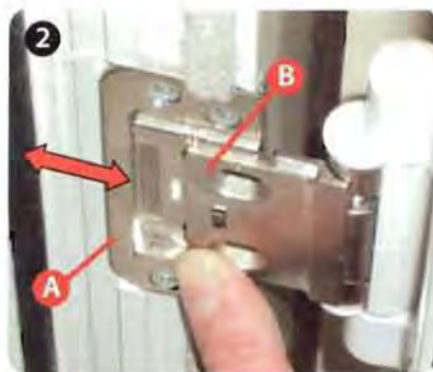
An adjustment tool that combines both 6mm socket and 4mm Allen key is available from Door-Stop International.



Hanging and removing the door



Remove the 2 screws that clamp side plate (B) to frame plate (A) to all three hinges



Carefully slide the door away from the frame plates.



Replace the door by reversing steps 1 and 2.

Compression



Loosen the 2 screws that clamp side plate (B) to frame plate (A)

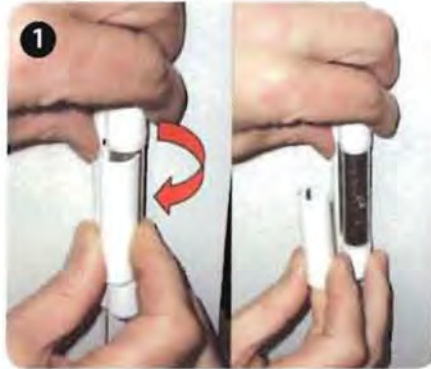


Lever the slide plate (B) with a screwdriver in the adjustment slot

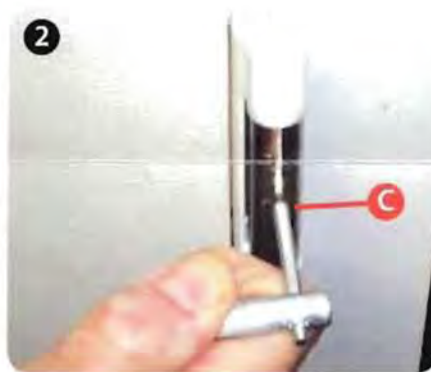


Secure the screws in the side plate.

Height



Remove the centre covers by hand.

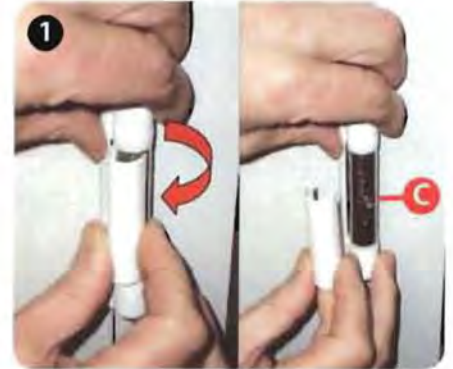


With a 4mm allen key loosen the socket screws (C) by about 1/3 of a turn

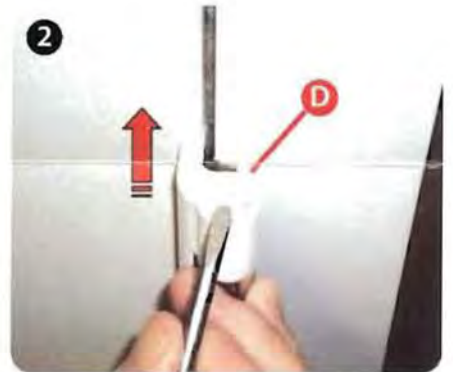


Lift and support the door to the required height whilst securing the socket screws. Replace the covers.

Side-to-side



Repeat steps 1 and 2 of the height adjustment to one hinge at a time



Carefully remove the top cap and with a 6mm socket spanner rotate the hex pin (D).



When in position secure the socket screw and replace the covers.