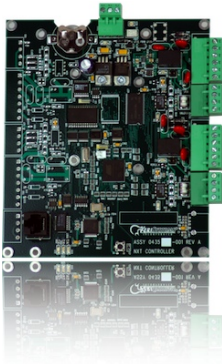


# Keri DuoPak – 2-door Access Control System with Auto USB



## **Step 1 - Contents for KeriDuoPak, 2 Door Access Control System with AutoUSB**

1ea. NXT-2D



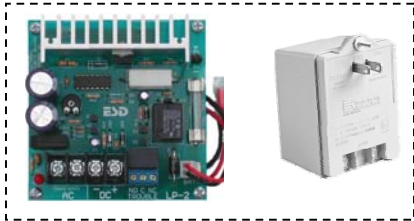
2ea. NXT-3R



Software



1ea. KPS-4-1



1ea. KUSB-1



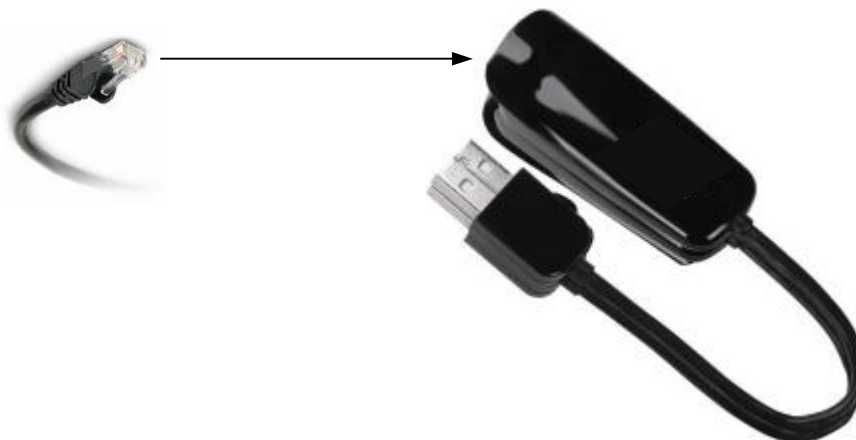
1ea. KPC-1



*Note: the NXT-2D includes the enclosure, which is not shown above.*

## **Step 2 – Mount all Controllers and Readers in the desired locations**

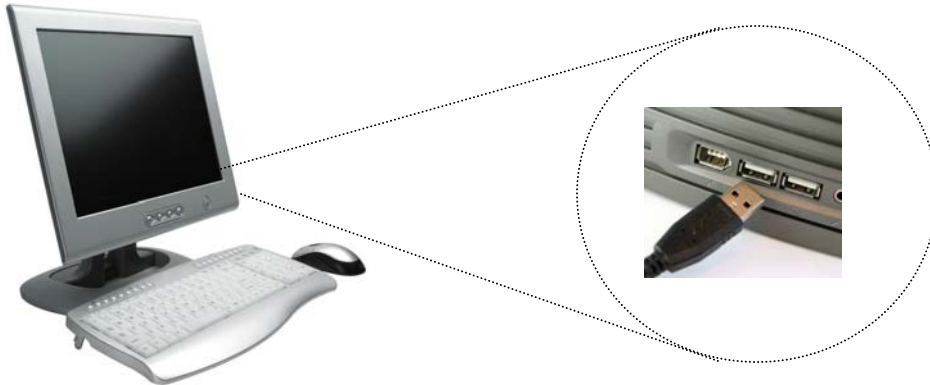
## **Step 3 - Connect the KPC-1 cable to the K-USB.**



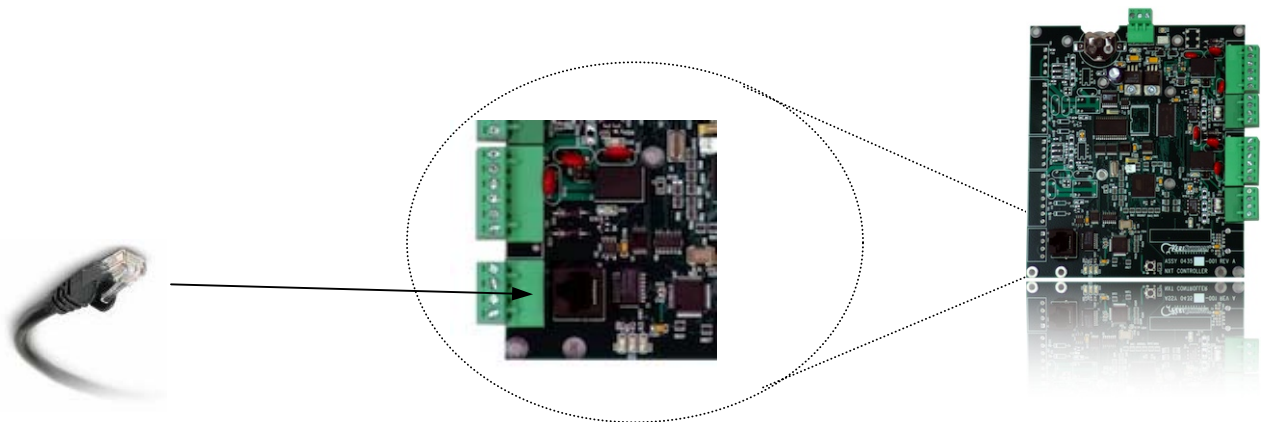
# Keri DuoPak – 2-door Access Control System with Auto USB



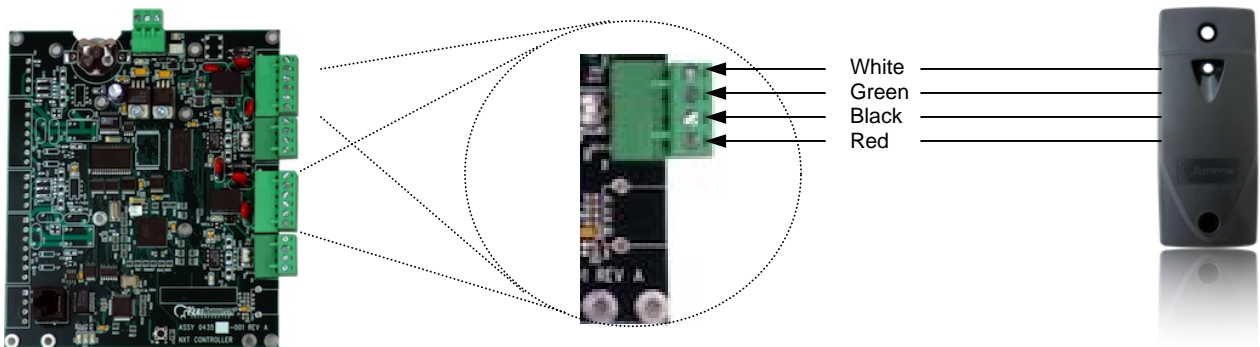
**Step 4 – Plug the USB Connector of the K-USB to any available USB port on the PC.**



**Step 5 – Plug the one end of the KPC-1 into the K-USB and the other end into the black RJ-45 connector (J2) on the NXT-2D.**



**Step 6 - Connect 2ea. NXT-3Rs to the right side connectors (TB1 and TB3)of the NXT-2D.**



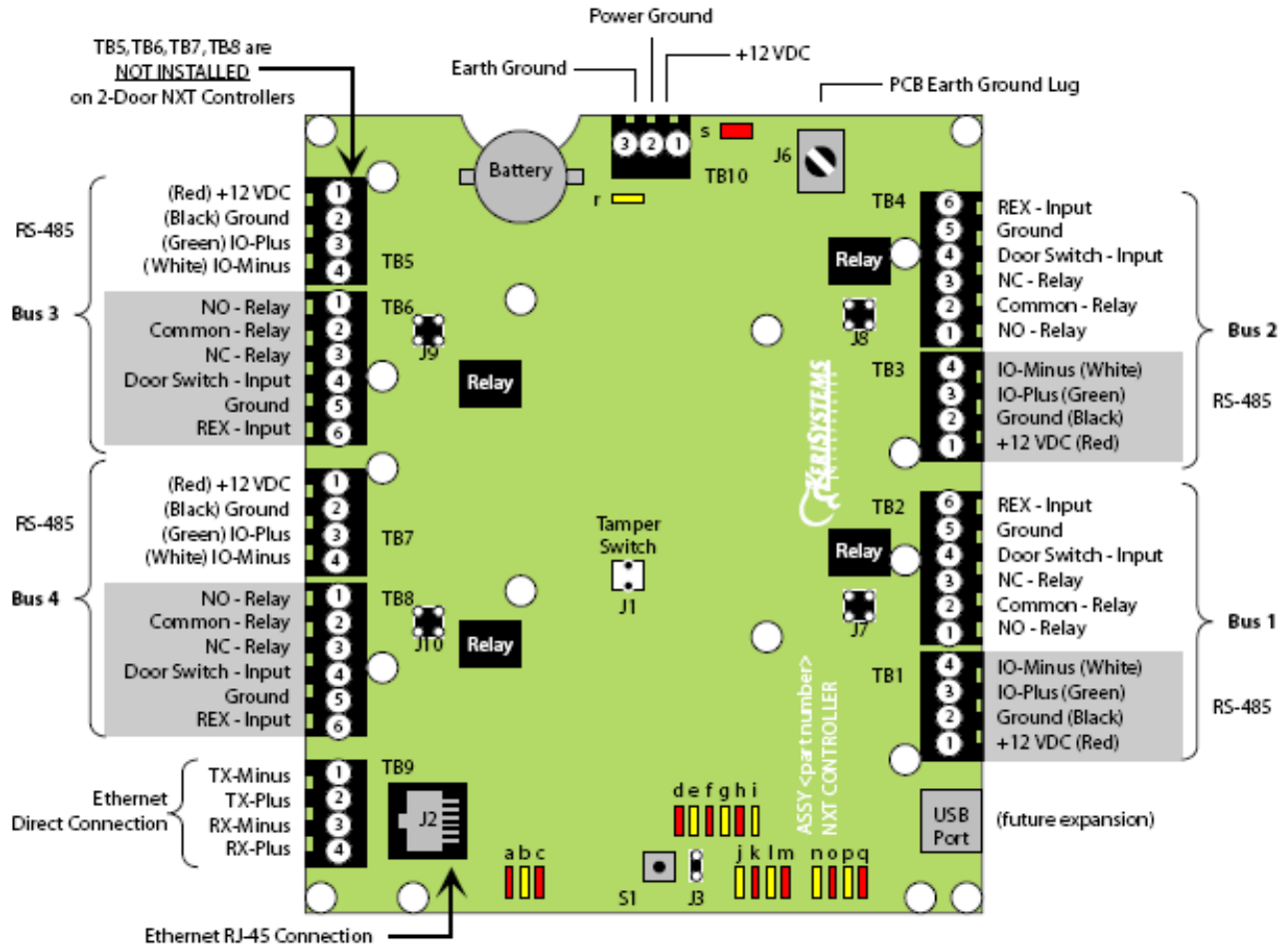
**Step 7 – Connect the 2 two contacts for the transformer from the KPS-4-1 to the main board for the KPS-4-1. The KPS-4 main board should already be connected to the NXT-2D.**



**Step 8 – Connecting the Door Hardware**

Use the Diagram below to hook up the remaining door hardware.

**NXT-2D/4D Installation Drawing**



## Step 9 – Software Installation

**Driver Installation** - Insert the Installation CD, packaged with the K-USB device, into your computer's CD-ROM drive. The computer's operating system automatically detects the Adapter and asks you how to begin the driver installation. For Windows XP, select **Install the software automatically**. For Windows Vista or 7, select **Locate and install driver software**.

**NOTE:** If the operating system does not auto detect the USB to Serial adapter and install its driver, you must manually install the driver using the CD provided with the device.

### Doors.NET installation

**NOTE:** Doors.NET utilizes the latest Microsoft .NET framework and service patches. Depending on the computer, Windows Update may need to be run multiple times before installing Doors.NET. The installer will install the required .NET patches if needed. Computers that are not up to date will require additional time for the install.

- Close all running applications.
- Select a Typical Installation to install the Doors.NET Application Server, NXT Gateway, Administrative Client and the Global Linkage Service.
- Use the Custom installation Option if different components need to be installed.

## Step 10 – Software Configuration

- After installation, run the Eclipse License Manger. (*Start → Programs → Door. NET → License Manager*)
  - In the Installed Components section, select Application Server under Services

- Enter the License Keys for the Application Server if one has been provided and click on Activate.

## Keri DuoPak – 2-door Access Control System with Auto USB



- If a License Key was not provided, click on the Demo button to run Doors.NET in a fully functional demo mode.
  - If the computer is not connected to the Internet, the license file must be activated off line. The license manager will display instructions to copy the license file and provide an email address where the license file should be sent. Once the license file is received via email, it will be digitally signed and emailed back with instructions on how to install the file and restart the services. This process will also activate the software in demo mode that will last for 30 days.
  - The Application Server Service will restart after Activation is successful.
- Run the Gateway Wizard (*Start → Programs → Door.NET → Gateway Wizard*)
    - Under Gateway Selection, select Keri- NXT Series

- Connect to the server,
  - Select Keri – NXT Series as the Gateway Selection.
  - Enter the IP Address of the Application Server (or localhost if the Server and Gateway reside on the same computer)
  - Enter the User Name and Password (the default username is “admin” and the default password is “admin”).
- Enter a name for the gateway in the Description box and select Add Gateway.

- Select the Gateway and then click on the Next button and then the Finish button. The NXT Gateway service will be restarted.

## Step 11 – Auto Configuration

Start the Administrative Client Application.

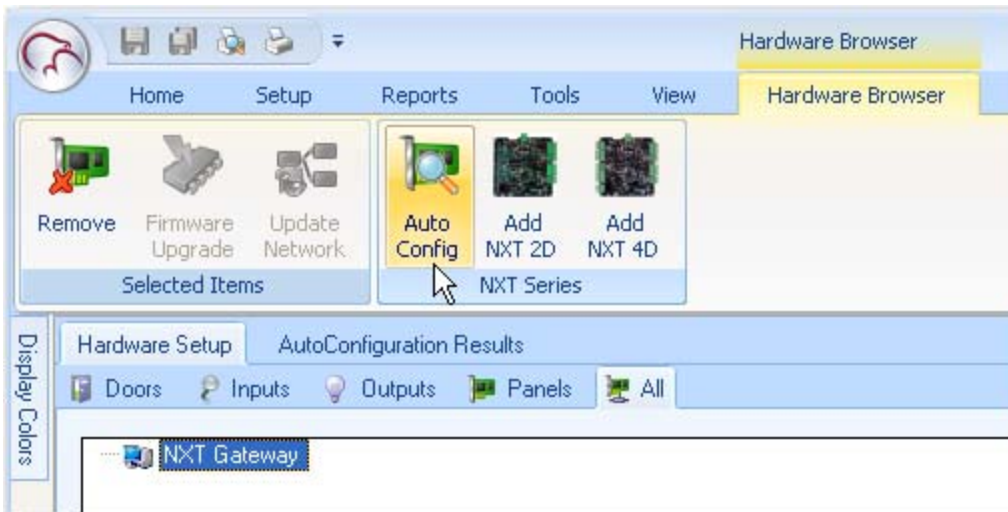
Autoconfig queries the local subnets for each NXT Gateway and returns a list of NXT Controllers found on the network.

**Note:** The DoorsNXTProxy.exe service must be allowed to communicate through any firewall installed on the computer running the NXT Gateway service. The DoorsNXTProxy Service is automatically added to the list of exceptions in the Windows Firewall during installation, however if another firewall is being used, it may prevent Autoconfig from finding the controllers on the Local LAN. The following Port numbers are used for Doors.NET communication and should be allowed to pass through a firewall – UDP 11434&11435, TCP 10020, 10030, 11000-11015 &11435.

- Click on the Setup tab and then on the **Hardware Setup** button in the Hardware Toolbar.



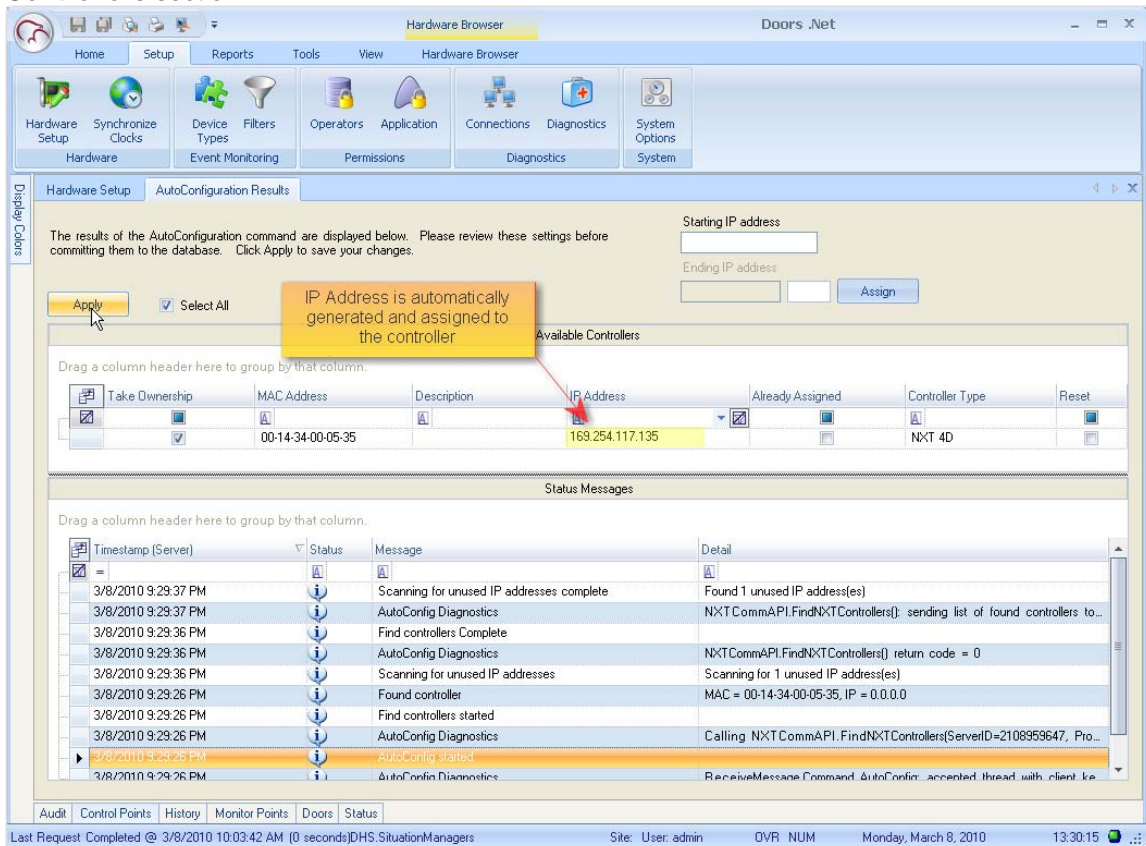
- In the Hardware Setup tab, click on the All tab and then select the NXT Gateway. The Auto Config icon will appear in the tool bar. Click on the Auto Config button.



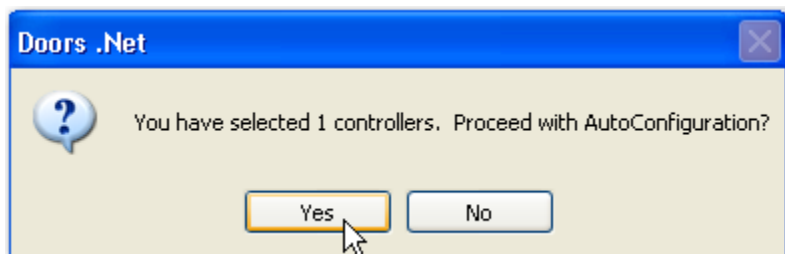
## Keri DuoPak – 2-door Access Control System with Auto USB



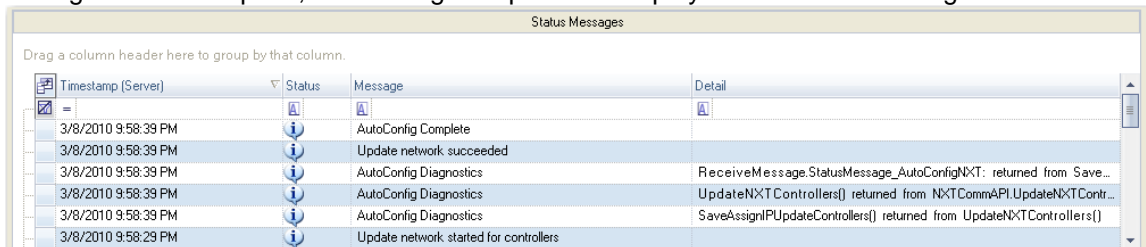
- The AutoConfigurationResults Tab will be displayed. Progress of the Auto Configuration will be shown in the **Status Messages** section. Detected controllers will appear in the **Available Controllers** section.



- Click Apply and then click Yes (in the dialog that appears) to continue the Auto Configuration Process.



- Auto Configuration will next assign the IP Address to the controller and update the controller's settings. Once complete, AutoConfig Complete will display in the Status Messages.

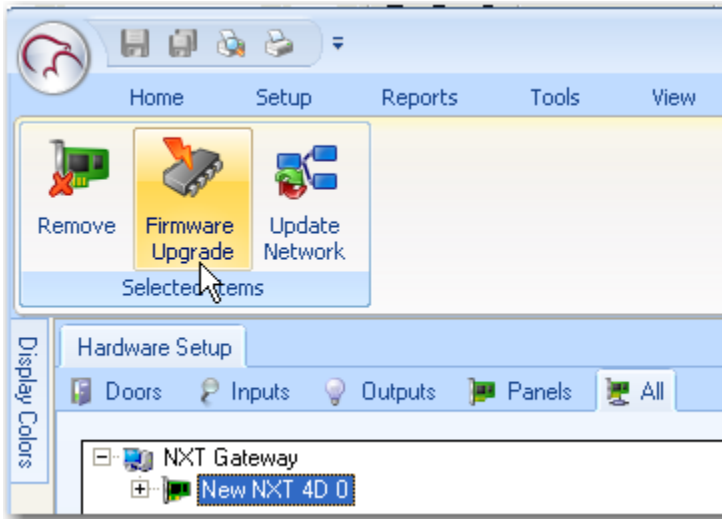




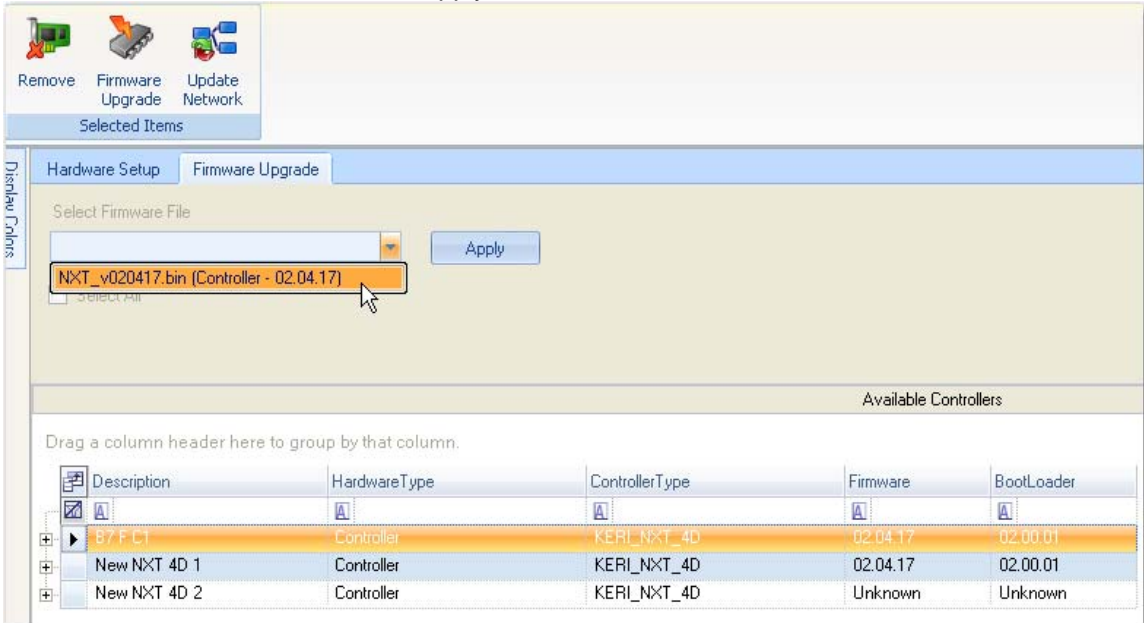
## Step 13 – Firmware Upgrade

**NOTE:** When upgrading firmware, the Administrative Client must run on the computer that is running the NXT Gateway service.

- o In the Hardware Setup tab, select the All tab and then select a controller on the tree.
- o Click on the Firmware Upgrade button, which will be present in the Selected Items Toolbar ribbon.



- o Select the controller or controllers that need to be updated in the Available Controllers list and then select a firmware file and click apply.



- o A progress bar will appear on the right side of the selected controller tracking the progress of the firmware upgrade.
- o The Firmware Upgrade is complete once the progress bar for all selected controllers reaches 100%.