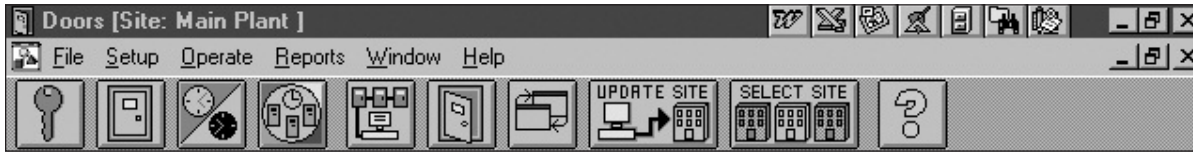


Doors™ for use with Windows™ Access Control Software



Doors for use with Windows is a software program that configures and manages an access control system utilizing Keri's PXL-250 and PXL-500 Tiger Controller family. *Doors* makes use of all popular Windows features such as resizing and relocation of windows, drag and drop functions, multiple windows open simultaneously, and "real time" operation.

The software provides the operator an extremely user friendly interface that defines system parameters, manages card and transaction files, sets timing functions, and prepares reports. *Doors* operates under Windows 95, 98, NT, 2000, ME, or XP and is capable of managing a single site via direct connect or modem as well as virtually an unlimited number of remote sites via modem or TCP/IP (ethernet). Video Badging is available as an option.

Keri has designed some great features into *Doors* that make it extremely easy and flexible to learn and use:

Spreadsheet or Dialog Box Interface

For operators who are familiar with Microsoft Excel™, many operations can be performed in spreadsheet format, with simple sorting, block and copy functions.

SAVE	VOID	DELETE	START ENROLL	STOP ENROLL	SORT	BLOCK	COPY
Last Name	First	Card Num	Access Group	Dept Group	On Off	Enroll Date	
1	Abrams	Kathleen	1005 Ship/Receive	Stockroom	ON	07/30/1997	
2	Anderson	James	1001 Janitorial	Maintenance	ON	07/30/1997	
3	Baker	Keith	1007 Swing Shift	Assembly	ON	07/30/1997	
4	Callahan	Deborah	1010 Ship/Receive	Warehouse	ON	07/30/1997	
5	Johnson	Matt	1011 Managers	Accounting	ON	07/30/1997	
6	Martinez	Tony	1003 Managers	Accounting	ON	07/30/1997	
7	McMillan	Scott	1012 Day Shift	Engineering	ON	07/30/1997	
8	Smith	Robert	1002 Janitorial	Maintenance	ON	07/30/1997	
9	Sullivan	Rebecca	1006 Managers	Marketing	ON	07/30/1997	
10	Thibeaux	Peter	1013 Graveyard	Assembly	OFF		
11	Thomas	Bill	1004 Swing Shift	Assembly	ON	07/30/1997	
12	Thompson	Jerry	1008 Total Access	Executive	ON	07/30/1997	
13	Webber	Lucille	1009 Day Shift	Assembly	OFF		

Enroll | Card Data | More Card Data | Preferences | Personal Setup

SAVE | All Sites

PREV

Next

VOID

DELETE

Last Name: Sullivan, First: Rebecca, Middle: Marie

Internal Number: 874549898, Enroll Date and Time: 07/30/1997 15:20, Card Status: Active, Card Number: 1006

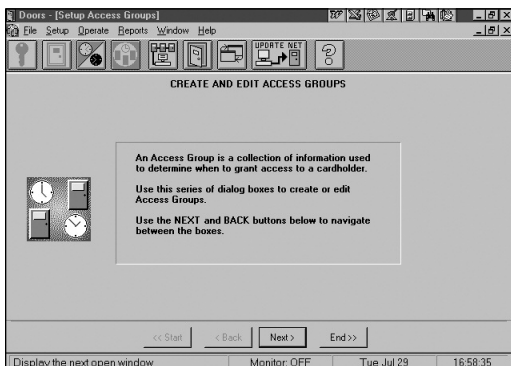
Void Date and Time: []

Access Group: Managers

Start Doors event monitoring | Monitor: OFF | Wed Jul 30 | 15:33:23

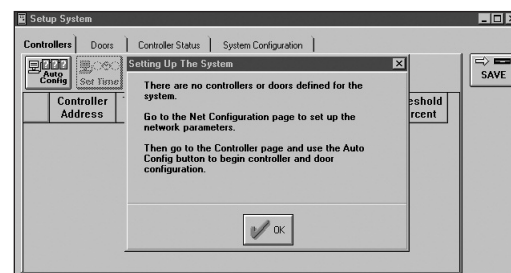
Wizards

Wizards provide the operator a step by step walk-through procedure for setting up access groups.



Auto-Configuration

The software automatically checks the network and configures itself according to the connected hardware, greatly simplifying the system setup procedure.



2305 Bering Drive, Ste A
San Jose, CA 95131 U.S.A.
(800) 260-5265 • (408) 435-8400 • Fax (408) 577-1792
e-mail: sales@kerisys.com web: www.kerisys.com

DATA SHEET | Doors™ for use with Windows™
Access Control Software

Doors™ for use with Windows™

Access Control Software

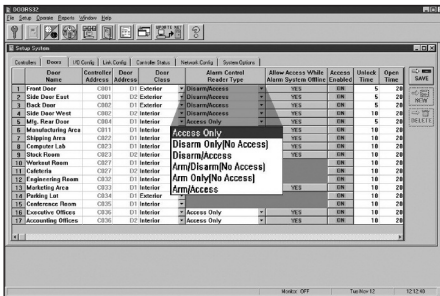
- No dedicated PC required, runs in the background with other applications
- PC does not need to be on or connected, only required during uploading, downloading, or monitoring
- Extensive Help file
- Full Windows feature set, including multiple windows open simultaneously, window resizing and relocating, drag and drop functions, cascading and tiling, no DOS boxes
- Custom communications protocol to reduce or eliminate general protection faults (GPFs) and crashes
- Remote multiple site monitoring with dial up, global and site specific card enrollment, and reporting
- Configurable automatic download of controller event buffer
- 32 system operators, each with password protection and configurable privileges
- 32 time zones, each with 4 start and stop intervals
- 3 holiday schedules, each with 32 user definable holidays, on-board calendar for programming ease
- Unlimited number of Access Groups
- 6 extra sortable, user definable text fields for individual cardholder information in addition to last name, card number, access group and department group
- Alarm system control and reporting with NetworX (Caddx) NX-8E Alarm Panel
- Future card activation and expiration

PC Requirements

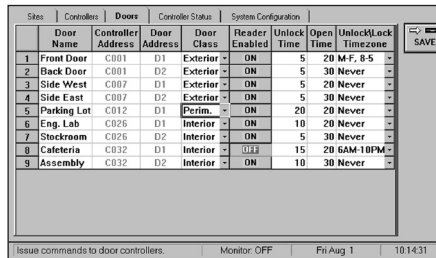
- 90 Mhz Celeron or Pentium Processor
- Mouse and Keyboard
- 128 MB RAM, 20GB Hard Drive
- SVGA Monitor Graphics Card
- CD-RW CD-Burner
- Available Com Port
- Windows 95, 98, 2000, ME, XP, or NT 4.0

NEW FEATURES!

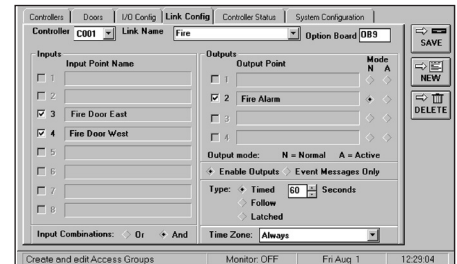
Alarm Control



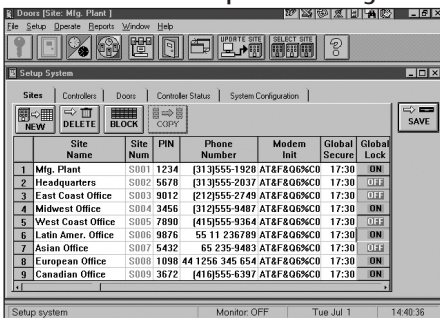
Door Setup



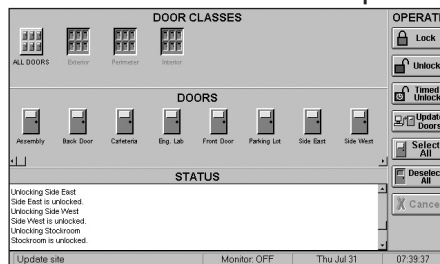
Input/Output Links



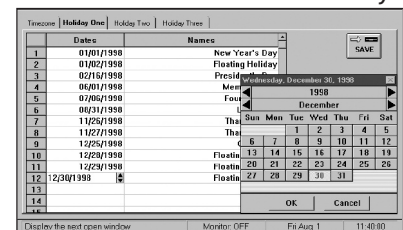
Multiple Site Management



Manual Door Operation



Holidays



Presented By:

