

Uniclass
L384:D941
CI/SfB
941 (22.3) X



Komfort Washrooms

Bespoke washroom solutions

Love the space you're in.

Specialist expertise

Komfort are specialists in the design and production of commercial glazed and solid partitioning, laminate, timber and veneered doors & panels, so using this extensive product knowledge have now created a new range of washrooms.

As the UK's leading supplier of partitioning systems, we provide solutions to the commercial interiors sector which range from traditional design to modern contemporary styles. All our systems are compliant with current building regulations and suitable for any office fit-out or refurbishment.

As part of our continuing commitment to delivering exceptional service we offer specialist expertise in the following areas:

Structural strength, fire and acoustic performance. To guarantee the safest and widest product offering in the UK's commercial interiors sector and provide peace of mind, we operate an uncompromising programme of product testing.

Our glazed and solid, fire and non-fire rated partitioning and doors are independently tested at authorised laboratories in accordance with the relevant British Standard.

Technical knowledge. Through our long term product research, development and experience supplying complex and large projects, we have established an unrivalled understanding of the needs of the contractor and end user.

Our logistics expertise, scaled with dedicated project management, supports monitoring manufacturer deadlines and schedules from order through to production and delivery.

Ongoing investment. We invest in extensive stock to ensure the widest selection of products, supported by specialist distribution to offer delivery in consolidated loads, thereby reducing disruption and minimising environmental impact.

Tooling and manufacturing facilities. Our extensive ongoing investment, means we are able to deliver cost effective, high quality products under-pinned by continual enhancements to service.

- Full accreditation to BS EN ISO 9001, 14001 and OHSAS 18001.
- Full IFC certification for FD30 and FD60 30 and 60 minute fire rated doors and door kits.
- FSC certification.
- Carbon Trust Standard.
- NBS Plus clauses.

Outstanding service

Our portfolio of support services is available throughout the duration of the project and includes:

- Estimates.
- Technical support and guidance.
- Web accessible technical documentation including junction drawings in CAD and PDF formats.
- Certification and installation statements.
- Sales support.
- Site surveys for glass and blinds.
- Product installation training.
- NBS specifications.
- Dedicated specifiers support line.
- RIBA approved CPD seminars.

Washrooms

- Outline
- Outline Sheer
- Stature
- Solo
- Vanity Units

Partitioning Systems

- Ls90
- Single/Double Glazed Polar
- Polar Vision
- PolarTec
- Polar 100
- Klassic
- Komfire 75 & 100
- Kameo 75
- 600 Series
- Confluence
- KM³ StorageWall
- Movable Walls 80 & 200

Doors

- Veneered
- Glass
- Laminate
- Door Furniture

SwitchGlass

Blinds and Graphics

Manifestation

Architectural Glass and Firescreens

Creating an interior space and looking for project inspiration?

Komfort has showrooms located in London, Leeds and Scotland which are used by architects, designers and contractors.

To find out more or arrange a visit, email general@komfort.com



Komfort Washrooms

Bespoke washroom solutions

Contents

04	Komfort Washrooms
08	Outline
12	Outline Sheer
16	Stature
22	Solo
26	Vanity Units
30	Finishes
32	Sanitaryware
33	Brassware
34	Technical

Komfort Washrooms

Komfort has partnered with innovative product and interior designers to create a washroom range that reflects Komfort's reputation for quality and innovation in product design - high performance washrooms that meet the needs of today's commercial spaces.

This range brings together a sense of comfort, luxury and privacy to the commercial space. The latest trends in modern bathroom design, materials and colour combine with the eco and technological credentials demanded of the modern washroom. Infra red, touch free and LED technology ensure Komfort Washrooms are efficient eco spaces with plenty of contemporary style. Reacting to increasing demand for privacy in the washroom, Komfort has developed a completely unique product concept with Solo - much more than a cubicle it is a completely private executive washroom

that reflects an upmarket en-suite with its range of design led fittings and luxury materials. It uses Komfort partitioning including the new Confluence detailing and door kit technology- bringing a new quality and performance standard to the washroom market.

The range consists of 4 individual products:

Outline – a minimal framed cubicle system.

Outline Sheer – incorporates back painted glass for partitions and doors within the Outline frame

Stature – a full height solid cubicle system with the option of utilising an overpanel.

Solo – a fully integrated unisex cubicle including vanity and wash area.

In addition to the cubicles, a range of complementary bespoke vanity units have been designed to enhance the ethos of the washroom. The Komfort washroom collection is a one stop shop for specifiers and designers, providing them with a comprehensive range of washroom products with a stylish and modern design aesthetic that would sit in any high spec architectural space. Choice is the key to

Bespoke

In addition to the wide range of laminate, wood veneer and glass finishes available, Komfort can apply bespoke graphics to the door and partition panels of Outline, and all panels including the pilasters of Stature.

Utilising technologies within Komfort's signage and graphics division a double layer film is face applied to the panels. This could include corporate branding or full scale images creating high impact aesthetics to your washroom.



this collection - the offer extends beyond cubicle systems to every element needed to create stylish and individual contemporary washrooms, from unique vanity units to design led ranges of sanitaryware, brassware and accessories are offered as standard. With a carefully selected range of completely interchangeable key finishes, colours and shapes, there is a unique solution for every project. It brings together the best in washroom design to offer a complete design solution.

Our simple to install products are finished to the highest standard and feature:

- A wide range of panel options which offer the highest quality finish
- Consistent fixings throughout the range, offering a complete solution
- Bespoke vanity units complementing the cubicle ranges
- Variety of full height, individual, glass or floating cubicle systems



Building Regulations Summary

Standard

A standard WC compartment must have a minimum 450mm diameter manoeuvring space within the cubicle. This is to be maintained between the swing of the door, the WC pan and the side wall of the compartment.

Enlarged

Where four or more cubicles are provided in a washroom, one of these should be enlarged. Enlarged cubicles are there to assist people who need extra space. The provision of an enlarge cubicle is in addition to the requirements to provide an ambulant cubicle.

Ambulant Disabled

Every same sex washroom must have at least one WC compartment (Cubicle) that is suitable for the ambulant disabled. If there is only one cubicle in the washroom then this must be suitable for an ambulant disabled person. In addition, the ambulant cubicle must provide the correct grab rails and inner pull handles.

Stature washroom in Blanc Megeve Polyrey laminate finish with bespoke applied water lily graphics to the flush frontage.



Post formed IPS in F7858 Formica laminate finish with stainless steel grab rail.



Square profile IPS in White Oak veneer. Veneer IPS panels are only available in square profile.

Simplicity through design

The concept of pre-plumbed modules is not new, but the way that it is achieved by Komfort Washrooms is revolutionary.

Traditional pre-plumbed methods have a number of associated drawbacks such as accessing a site with heavy, cumbersome and often fragile units; sanitaryware that is exposed to damage in transit; and exposure to other trades on site as panels are removed to complete the installation and plumbing. The Komfort Washroom IPS (Integrated Plumbing System) re-defines the standard for easy to specify, simple to install pre-plumbed systems by a number of ingenious design features and attention to detail.

Robust, self supporting modules

IPS is a self supporting module manufactured from strong 1.6mm thick galvanised steel – not just a flimsy frame. It is fully adjustable for height, plumb and level, effectively creating a pre-plumbed duct wall.

Complete and ready to install

The modules are produced to specification, including plumbing, sanitaryware, water and soil connections and then function tested. Decorative access panels are fitted already machined, ready to receive sanitaryware.

Protective packaging

Each module is tested, numbered and vulnerable sanitaryware removed and boxed for protection. All decorative access panels are removed, numbered and packed to prevent damage.

Easy to handle on site

On site, the modules are lightweight and easy to handle, ideal for transfer into often limited size washroom facilities. Vulnerable parts and sanitaryware remain protected until required, eliminating the risk of damage.

Easy 5 stage installation

Installation of IPS modules is achieved in five easy stages, which delivers a rapid and efficient completion to the project. Sanitaryware is repositioned and fixed, water and soil services coupled up and decorative access panels refitted to complete the installation.

The IPS panelling can be specified as an option with all Komfort Washroom ranges in both post formed (rounded edges) and square profiles. IPS front panels are available in a variety of materials and finishes including laminated chipboard with square or post formed edges, solid grade laminate in routed or radiused edges, veneer in square edges or toughened back painted glass. All products are produced in a BSI Registered ISO9001:2000 accredited manufacturing facility to ensure the highest standards every time.





Outline

Outline is a minimal framed cubicle system using bespoke designed pilasters produced from high quality aluminium extrusions. The engineering and design of the system means no fixings apart from lock and indicator are visible.




The set back feet of Outline produce a floating appearance. The minimal design to the pilaster framework create a near flush front. The straight lines of Outline are complemented by Block vanity unit in Formica F5373 Nocturn Wood laminate with Sanindusa Flow basin and Crosswater Glide mixer tap.

The Outline range is produced with aluminium extrusions that can be painted to any RAL colour to meet specification. Hardware includes stainless steel indicator and mortice lock and leg giving nominal floor to partition gap of 100mm producing a floating appearance.

Quality butt hinges and door closers provide a minimal and near flush facade.



Lock keep is fitted within the pilaster.



Outline cubicle with Polyrey Sarum Grey F2770 Matt laminate doors and partitions with Oak lipping applied to the doors, post formed IPS unit in Formica Iron F7902 and framework painted in RAL 9006 satin finish. Accessories featured within the cubicle are sensor flush and Sanindusa Reflex wall hung WC pan.



Outline

Technical specification at a glance

Outline - a minimal framed, laminated chipboard cubicle system.

DIMENSIONS:

Doors
Thickness - 32mm
Height - 2000mm



Partition
Thickness - 24mm
Height - 2000mm

WEIGHT Approx (kg):

Door - 30kg (2000mm x 725mm)
Pilaster - 4kg (2000mm x 90mm)
Partition - 48kg (2000mm x 1500mm)



APPLIED GRAPHICS:

Available applied to doors



IPS AVAILABLE:

Square or post formed edge
laminated chipboard

Radiused edge Solid Grade
Laminate (SGL)

Polished edge toughened, back
painted glass



BACK PAINTED GLASS:

Available for IPS



For further technical specifications and technical drawing downloads go to - www.komfort.com



Outline Sheer

Outline Sheer is constructed using the same bespoke extrusions as Outline but exchanges solid doors and partitions for back painted glass creating a reflective quality with elegance and durability.



Outline Sheer cubicles in back painted glass - RAL 5013 and gloss finish pilasters in RAL 9003.

Outline Sheer glass partition panels are formed from two 5mm sheets of toughened glass laminated with a 1.5mm interlayer and doors are 10mm heatsoak and toughened back painted glass. The glass and extrusions can be painted to any RAL colour to your specification.

To complement the linear aesthetic of the system, rectangular patch plate fixings connect to the concealed hinge creating neat and minimal external fittings.



Polished stainless steel patch plate detail.



Complementing curves and straight lines with stainless steel brackets and leg.

Outline Sheer highlighting beautiful reflective qualities of glass.



Outline Sheer

Technical specification at a glance

Outline Sheer - a minimal framed, glazed cubicle system.

DIMENSIONS:

Doors

Thickness - 10mm toughened and heatsoaked glass

Height - 2000mm



Partition

Thickness - 11.5mm toughened laminated glass

Height - 2000mm

WEIGHT Approx (kg):

Door - 35kg (2000mm x 725mm)

Pilaster - 4kg (2000mm x 90mm)

Partition - 86kg (2000mm x 1500mm)



APPLIED GRAPHICS:

N/A



IPS AVAILABLE:

Square or post formed edge

laminated chipboard

Radiused edge Solid Grade

Laminate (SGL)

Polished edge toughened, back painted glass



BACK PAINTED GLASS:

Yes - partitions & doors



For further technical specifications and technical drawing downloads go to - www.komfort.com



Stature

Stature and Stature with overpanel are flush fronted floor to ceiling washroom systems.



Run of Stature with overpanel cubicles in Polyrey Frutier Cendre F012 laminate, with outward opening cubicle as recommended in Building Regulations for ambulant toilet. This is complemented by Orbis vanity unit, Duravit Starck washbasin and Sanindusa Tube sensor tap.

Stature doors and pilasters are formed from a high quality 38mm chipboard core and hardwood edge for a luxurious appearance. Doors are rebated to create a flush front and include a sprung hinge, stainless steel indicator and mortise lock.

To complete the quality aesthetics, the aluminium extruded wall channels are colour coded to complement the pilaster and partition finish.



Oak veneered square profile IPS unit with RAK Metropolitan wall hung WC and sensor flush.



Stainless steel foot detail creating 20mm floor to partition gap.

Stature partition with post
formed laminate IPS



Stature with overpanel including outward opening door.



Full height Stature in Polyrey Blanc Megeve BO70 laminate applied to the doors and pilasters with LED lighting within headtrack. The inside of the cubicle is finished in Oak veneer throughout.





Stature

Technical specification at a glance

Stature - a flush fronted floor to ceiling washroom system available full height or with overpanel add to a maximum height of 2.8m.

DIMENSIONS:

Doors
Thickness - 38mm
Height - up to 2800mm
(2000mm with overpanel)



Partition
Thickness - 24mm
Height - up to 2800mm

WEIGHT Approx (kg):

Door - 40kg (2400mm x 620mm)
Pilaster - 13.5kg (2400mm x 200mm)
Partition - 60kg (2400mm x 1500mm)



APPLIED GRAPHICS:

Applied graphics
Available applied to doors and pilasters, plus overpanel if applicable



IPS AVAILABLE:

Square or post formed edge laminated chipboard
Rounded edge Solid Grade Laminate (SGL)
Polished edge toughened, back painted glass



BACK PAINTED GLASS:

Available for IPS



For further technical specifications and technical drawing downloads go to - www.komfort.com



Solo

Solo washrooms are completely enclosed individual washrooms that can be unisex, or user defined and will blend in with your interior space.



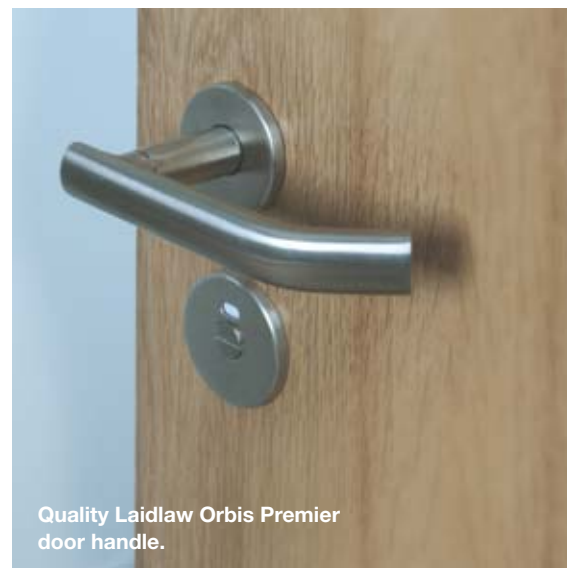
Solo with 6mm back painted glass IPS panels in grey RAL 9022. Mirrors are flush with the panelling and the IPS incorporates Sanindusa Flux wall hung basin, Vado Infra red Itech mounted sensor tap.

Solo is produced using Komfort's high quality stud and track wall construction and can incorporate Confluence seamless detailing.

A 44mm veneered door is offered and can be used with either a Komfire 100 aluminium extruded door frame, or Klassic frame - whichever will best suit your specification.



Solo integrated washroom.



Quality Laidlaw Orbis Premier door handle.

Solo can be grouped or individual washrooms according to your specification. Bespoke backlit IPS panel dividers have been used to create an eye catching and calming interior. Standard designs can be found in the swatches section of the brochure, however any design can be applied onto the perspex creating a completely bespoke interior.





Solo

Technical specification at a glance

Solo - a unisex individual washroom environment.



DIMENSIONS:

As per specification



WEIGHT Per m² (kg):

Dependant on specification



APPLIED GRAPHICS:

Dependant on specification



IPS AVAILABLE:

Square or post formed edge laminated chipboard

Radiused edge Solid Grade Laminate (SGL)

Polished edge toughened, back painted glass



BACK PAINTED GLASS:

Available for IPS

For further technical specifications and technical drawing downloads go to - www.komfort.com

Bespoke Pyramid freestanding washbasin. These can be specified individually or to your requirements. The units are formed from high quality LG HI-MACS.



Vanity Units

A vanity unit is a necessity in any washroom that can be specified to align with and complement cubicles and washroom interiors. The Komfort Washroom vanity units have been designed to create a lasting statement with LG HI-MACS cast units and high end laminate finished simple designs.



Wave vanity unit in LG HI-MACS M104 Roma finish and Duravit Starck washbasin.



Block vanity unit in Formica F5373 Nocturn Wood matt finish laminate and Sanindusa Flow washbasin with Vado Itech sensor tap.

Wall hung Orbis vanity unit in HI-MACS S05 grey finish. This unit can house an individual basin or up to four.

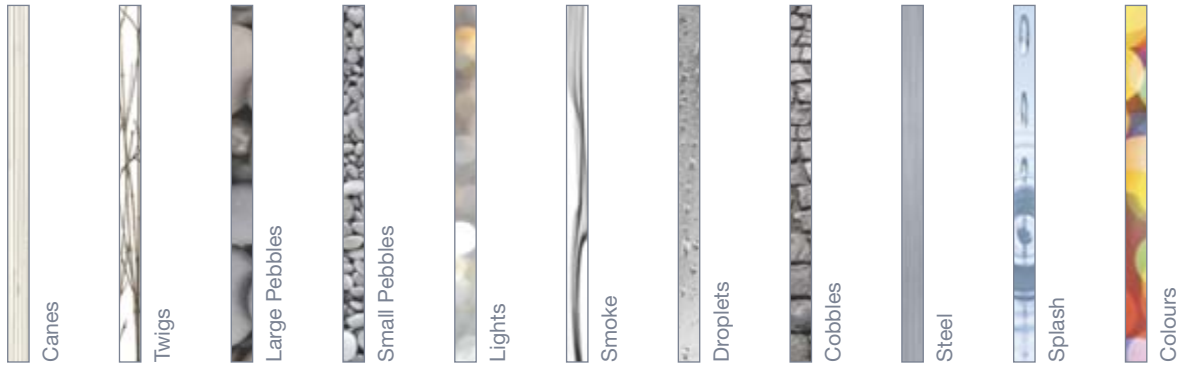




Finishes/swatches

Additional finish options available on request. Glass can be back painted to any RAL colour reference.

Back lit IPS divider panel graphic options



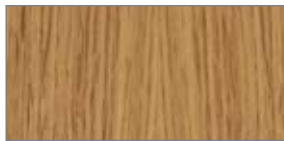
Door veneers



Quarter cut Sapele



Quarter cut Koto



Crown cut White Oak



Rotary cut Red Oak



Crown cut Cherry



Crown cut Ash



Crown cut Steamed Beech



American Black Walnut



Rotary cut Birch

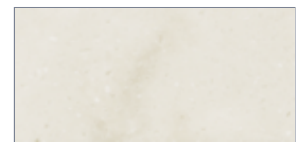


Birds Eye Maple

LG HI-MACS finishes



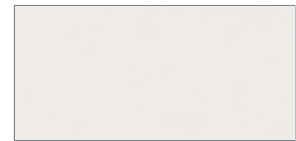
G515R Pecan



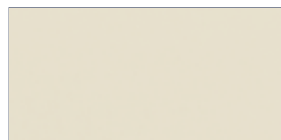
M101 Torino



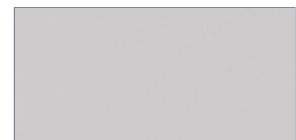
M104 Roma



S01 Satin white



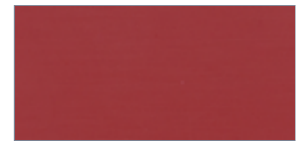
S02 Almond



S05 Grey



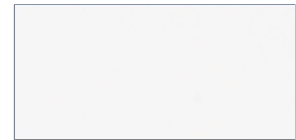
S22 Black



S25 Fiery red



S27 Orange



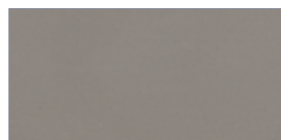
S28 Alpine white



S104 Toffee brown



S207 Marta grey



S209 Steel grey



S215 Marazin blue

Polyrey finishes



O030 Olivier de Seville



B070 Blanc Megève BRI-HG



F012 Fruitier Cendré FA



B070 Blanc Megève SOFT



P001 Pierre de Lune FA



P002 Palmarès Bleu FA



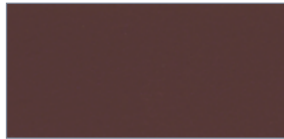
N005 Noir FA



P002 Palmarès Bleu BRI-HG



N005 Noir BRI-HG



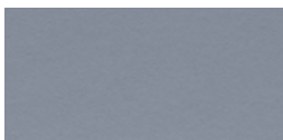
A088 Aubergine FA



N005 Noir GRAIN



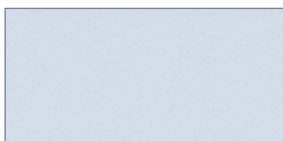
A088 Aubergine BRI-HG



G033 Gris Typhon FA



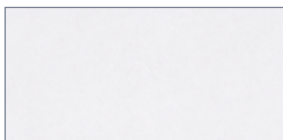
R036 Rouge Cerise FA



G029 Gris Tourterelle FA



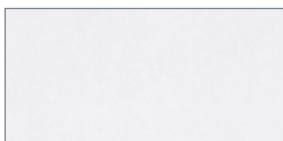
R036 Rouge Cerise BRI-HG



B004 Blanc Lys FA



S011 Safran FA



B004 Blanc Lys BRI-HG

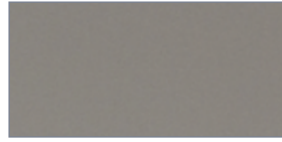


S011 Safran BRI-HG



B070 Blanc Megève FA

Formica finishes



F2770 Sarum Grey MAT



F6209 Prestige Walnut MAT



F7912 Storm Grey MAT



F5489 Espresso Pear NAT



F2297 Terril MAT



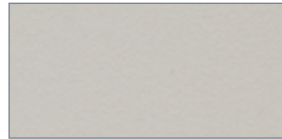
F9012 Ebony NAT



F3091 Crystal White AR Plus



F6308 Vogue Wood MAT



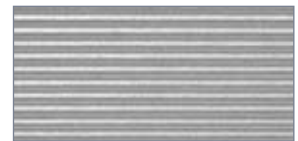
F2791 Silver MAT



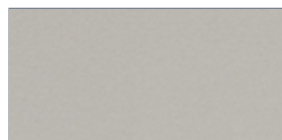
F5374 Elegant Oak NAT



K1994 Fox MAT



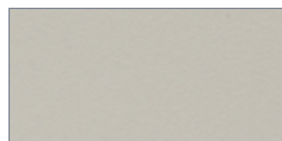
M4749 Isis Horizontal



F7902 Iron MAT



M2022 Brushed Aluminium



F7858 Pumice MAT



F1079 Natural Oak NAT



F5373 Nocturne Wood MAT

Note: These colours are printed for guidance only and may vary slightly from the actual finish of the product.

Sanitaryware - washbasins

This range from various luxury brands has been specially selected to complement the vanity and cubicle units of Komfort Washrooms.



Duravit Starck 1 washbowl
White ceramic - 460mm



Sanindusa Flux 65
wall hung washbasin



Sanindusa Flow
washbasin 47

Sanitaryware - wc



RAK Metropolitan
wall hung WC



Sanindusa Advance
wall hung WC

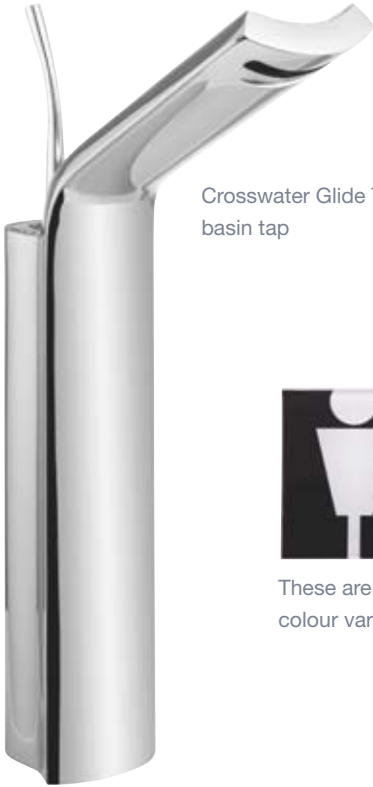


Sanindusa Tube sensor tap

Vado infra-red Itech wall mounted tap

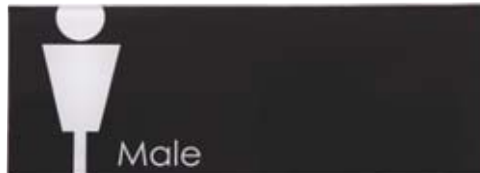


Crosswater Glide Tall basin tap



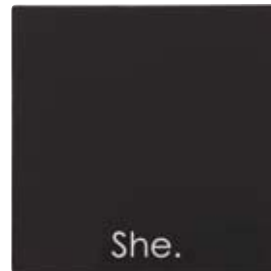
Brassware

Acrylic signs



These are available with any colour variations.

Perspex self adhesive indicator signs



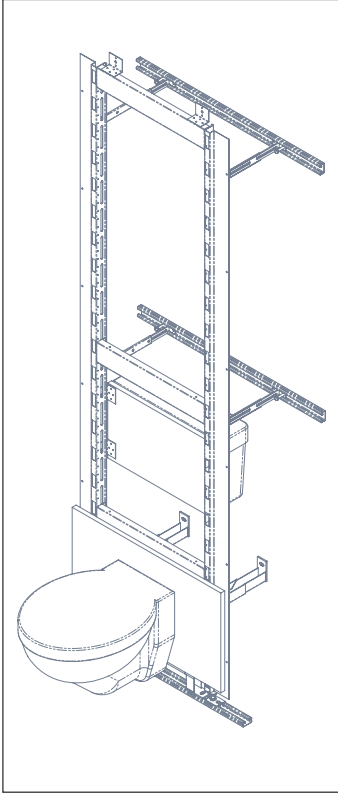
Sanindusa Reflex suspended WC



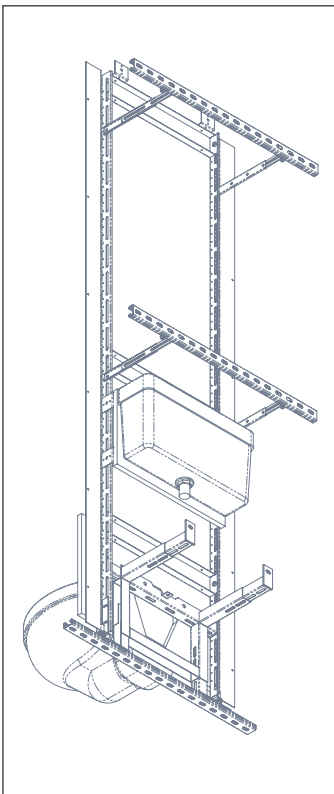
Philip Watts Design Gloop urinal

Technical

IPS units

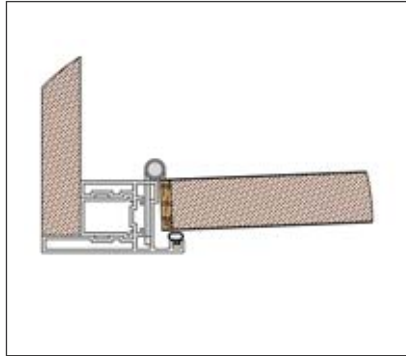


IPS Module complete with wall mounted pan and frame

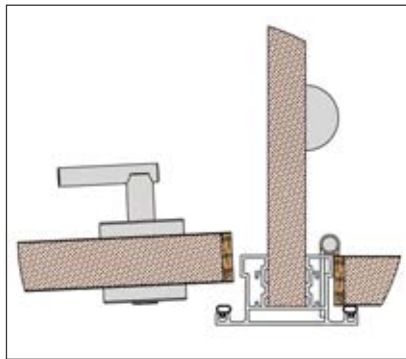


IPS Module rear view

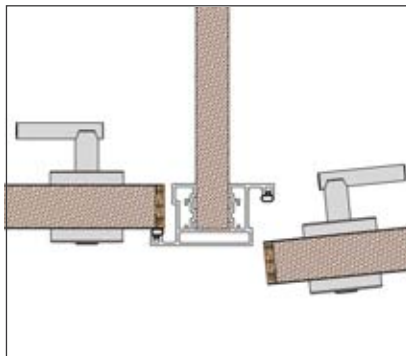
Outline



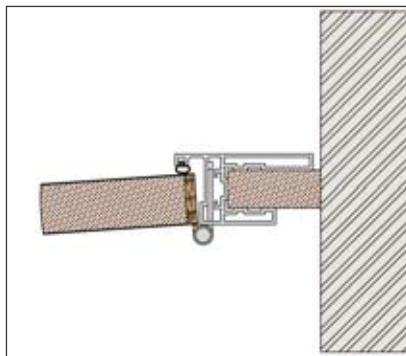
End pilaster



Centre pilaster with inward opening door

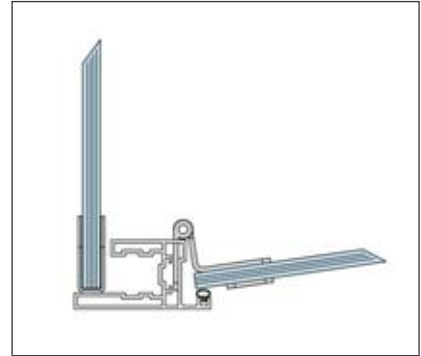


Centre pilaster with inward and outward opening doors

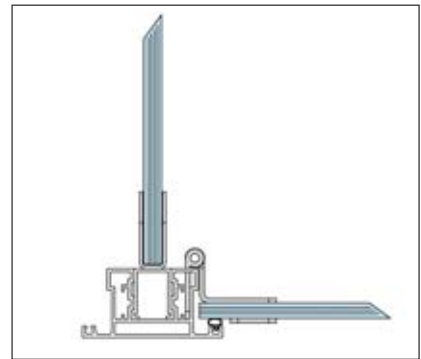


Wall pilaster

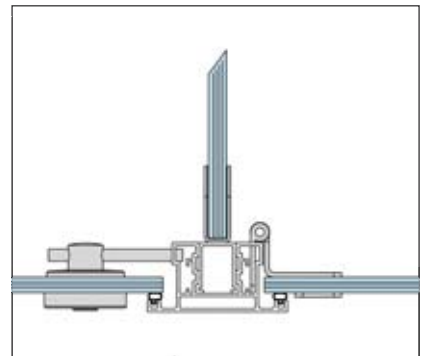
Outline Sheer



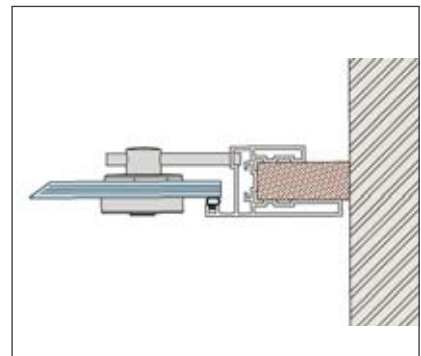
End pilaster



Centre pilaster

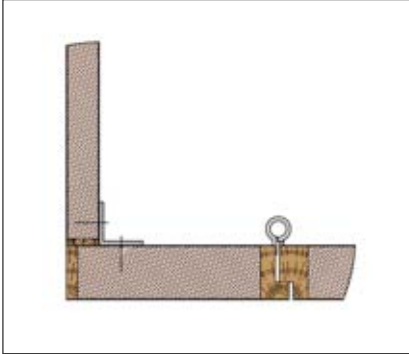


Centre pilaster with inward opening doors

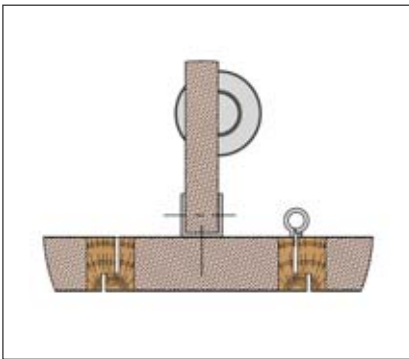


Wall pilaster

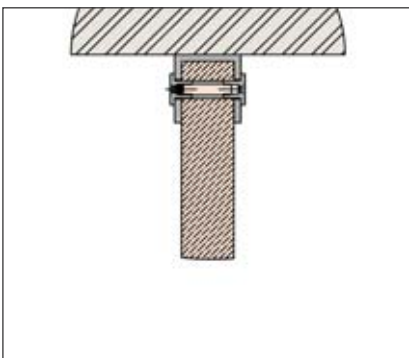
Stature



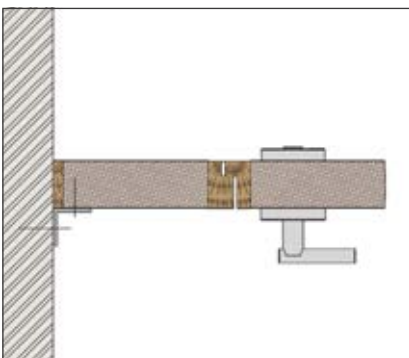
End pilaster



Centre pilaster with inward opening door

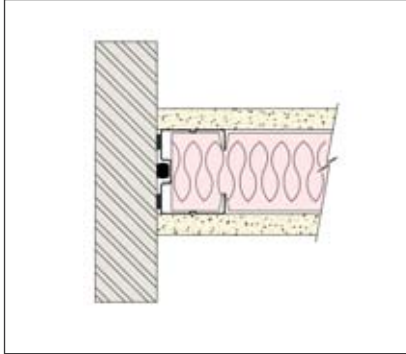


Wall fixing (same for Outline)

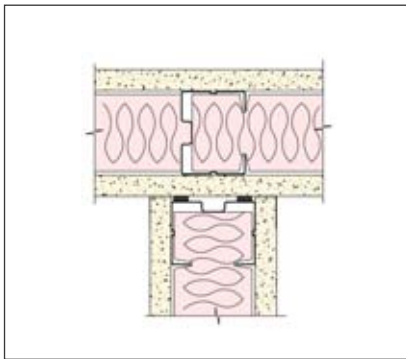


Wall pilaster with outward opening door.

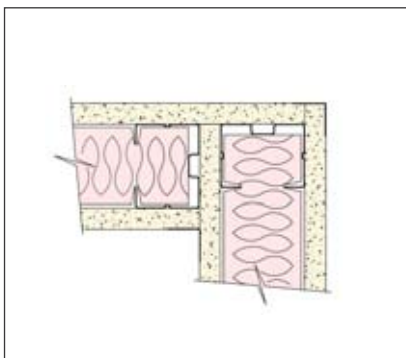
Solo



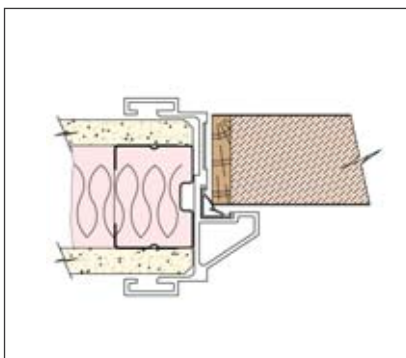
Solid abutment



3 way solid junction



90° junction



Solid to doorset junction

These drawings are for guidance only. For comprehensive information please contact our technical department.

Due to a policy of continuous product development we reserve the right to change product specification without prior notice.

Credits:

Tiles: N&C Building Products - www.ncdirect.co.uk

Flooring: International Decorative Surfaces - www.idsurfaces.co.uk

Wallcoverings: Tektura - www.tektura.com

Love the space you're in.

Sales Offices

Head Office – Horsham

Ashurst
Broadlands Business Campus
Langhurstwood Road
Horsham
West Sussex
RH12 4QP
Tel: 01403 390300
Fax: 01403 218828
E-mail: general@komfort.com

Leeds

Unit 2
Intermezzo Drive
Stourton Link
Leeds
West Yorkshire
LS10 1DF
Tel: 0113 395 6565
Fax: 0113 395 6566
E-mail: northern-sales@komfort.com

Birmingham

Unit 2
Rabone Park
Rabone Lane
Smethwick
Birmingham
B66 2NN
Tel: 0121 555 0300
Fax: 0121 555 0301
E-mail: midland-sales@komfort.com

Southern Sales Counter

Unit 10
Gatwick Distribution Centre
Whittle Way
Crawley
West Sussex
RH10 9RT
Tel: 01293 577890
(for stock/sales counter enquiries only)

Showrooms

London

14 Bonhill Street
London
EC2A 4BX
Tel: 0207 256 5701
Fax: 0207 374 8649
E-mail: london.showsuite@komfort.com

Leeds

Unit 2
Intermezzo Drive
Stourton Link
Leeds
West Yorkshire
LS10 1RU
Tel: 0113 395 6565
Fax: 0113 395 6566
E-mail: leeds.showsuite@komfort.com

Scotland

The Skyhouse
18 Elliot Place
Glasgow
G3 8EP
Tel: 01506 448190
Fax: 01506 437902
E-mail: scotland.showsuite@komfort.com



Scan the QR code to automatically download Komfort's Head Office contact details direct to your smart device. To download a QR scanner visit the relevant app store to correspond with your device.

ID Number: KOMWash02/12

Find us on:

Facebook  Twitter  YouTube 

www.komfort.com

Part of the Laidlaw Interiors Group

