



www.laidlawinteriorsgroup.com

one vision **one source** **one partner**

balustrade glass security hinges architectural glass levers technical expertise **balustrading** **access control** graphics and signage **partitioning** **metal doors** firecreens **blinds** anti-bacterial manifestation **washrooms** vision panels **handrail** anti-microbial protection **flat panel** flush bolts door closers **ironmongery** **project management** pull handles **locks** kick plates **glass doors** **reliable service** access panels **timber doorsets** cylinder and turns **ironmongery** **cubicles** curved glass privacy viewing panels **sound reduction** **finger protection** **heritage** **bespoke veneers** floor springs **thermal doorsets** **metal frames** **keys** **solid timber** **panelled doors** **post-formed protection** **storage wall** **fire resistance**

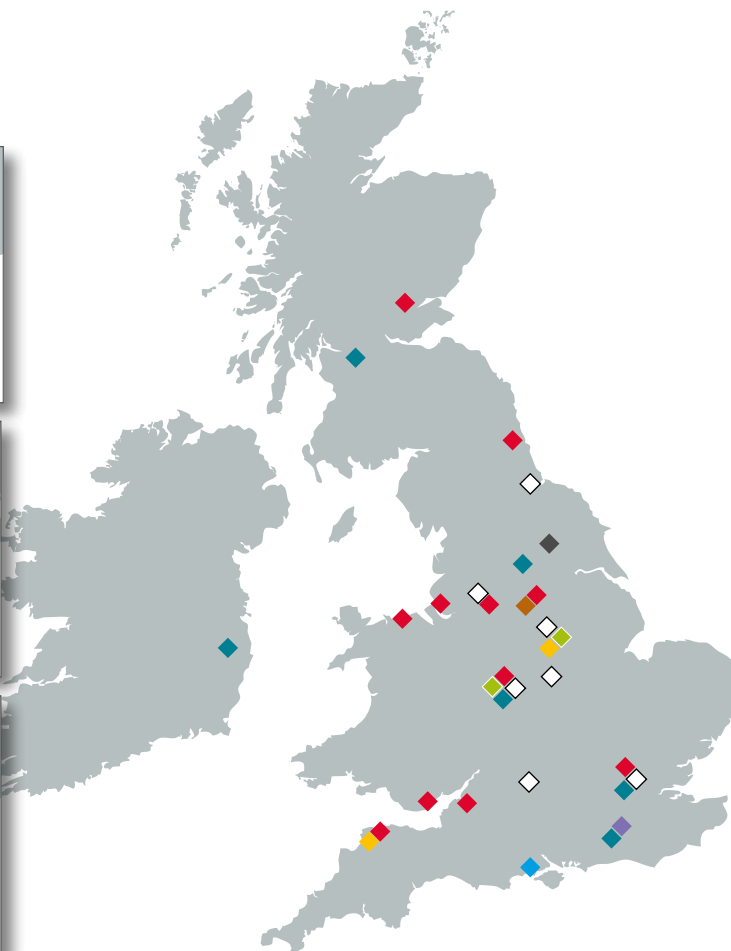


FITZPATRICK



Building Partnerships in Construction

Market leading products and service from a growing force in architectural interiors



1 - 2

Laidlaw Interiors Group has a history which can be traced back to Manchester in 1876 when a partnership between Frederick Thomson and Richard Laidlaw was formed producing malleable iron harnesses and mill equipment. Builders' ironmongery products were added later which developed further into architectural ironmongery.

Decades of business development have culminated in Laidlaw Interiors Group which was formed in 2011 from the amalgamation of some of the leading companies and brands in the architectural products sector.

To support our extensive and growing portfolio of market leading products, Laidlaw Interiors Group is now a comprehensive, integrated group of companies which are all committed to providing the highest levels of professional service to the architectural and building community.

Due to the specialised nature of our products and services we will continue to provide targeted support to all product areas but with an increasing degree of co-ordination and integration across the businesses.

Supporting and contributing to countless construction projects in the UK and overseas.



Washroom systems



Steel doorsets



Partitioning systems



Handrail & balustrading



Performance timber doorsets



Architectural ironmongery



Access control



Glass & structural glazing

One Vision, One Source, One Partner ...



Leading the way in architectural interiors

One Vision

The activity of building involves a great number of individuals and companies working towards the creation of a visual and functional entity; the '*Vision*' of the creative team. Making sure everyone involved is pulling in the same direction is critical to achieving that goal and at Laidlaw Interiors Group *Our Vision* is to become an integral and indispensable part of that process. In becoming the supply partner you can rely on, we aim to share your vision by seamlessly delivering the most appropriate interior solutions for your projects.

One Source

Whether products have a direct correlation with each other or not, there are fundamental advantages in supplying more integrated multiple product solutions from one source. The benefits are wide ranging and impact on many aspects of the design, specification, manufacturing, delivery, installation and construction phases of a building. From the performance and aesthetic advantages of a fully integrated doorset to the co-ordination of installation teams, the benefits are tangible and cost effective. We will continue to provide product specific service and advice but with the objective of delivering a greater degree of co-ordination throughout the wider Group.

One Partner

With Laidlaw Interiors Group as your supply partner you can be assured of industry leading specialist support at all stages of a project on the broadest range of "solutions based" products. With design, manufacturing and testing all within our control there are few situations that we either haven't experienced before or can't resolve. It's what makes us the largest independent supplier of architectural interior products in the UK.

Our Core Values



... One Team

What bonds One Vision, One Source and One Partner together and makes it work is One Team.

Working as One Team with a strong set of Core Values our customer centred approach is achieved through ...

Integrity - showing trust, honesty and confidentiality

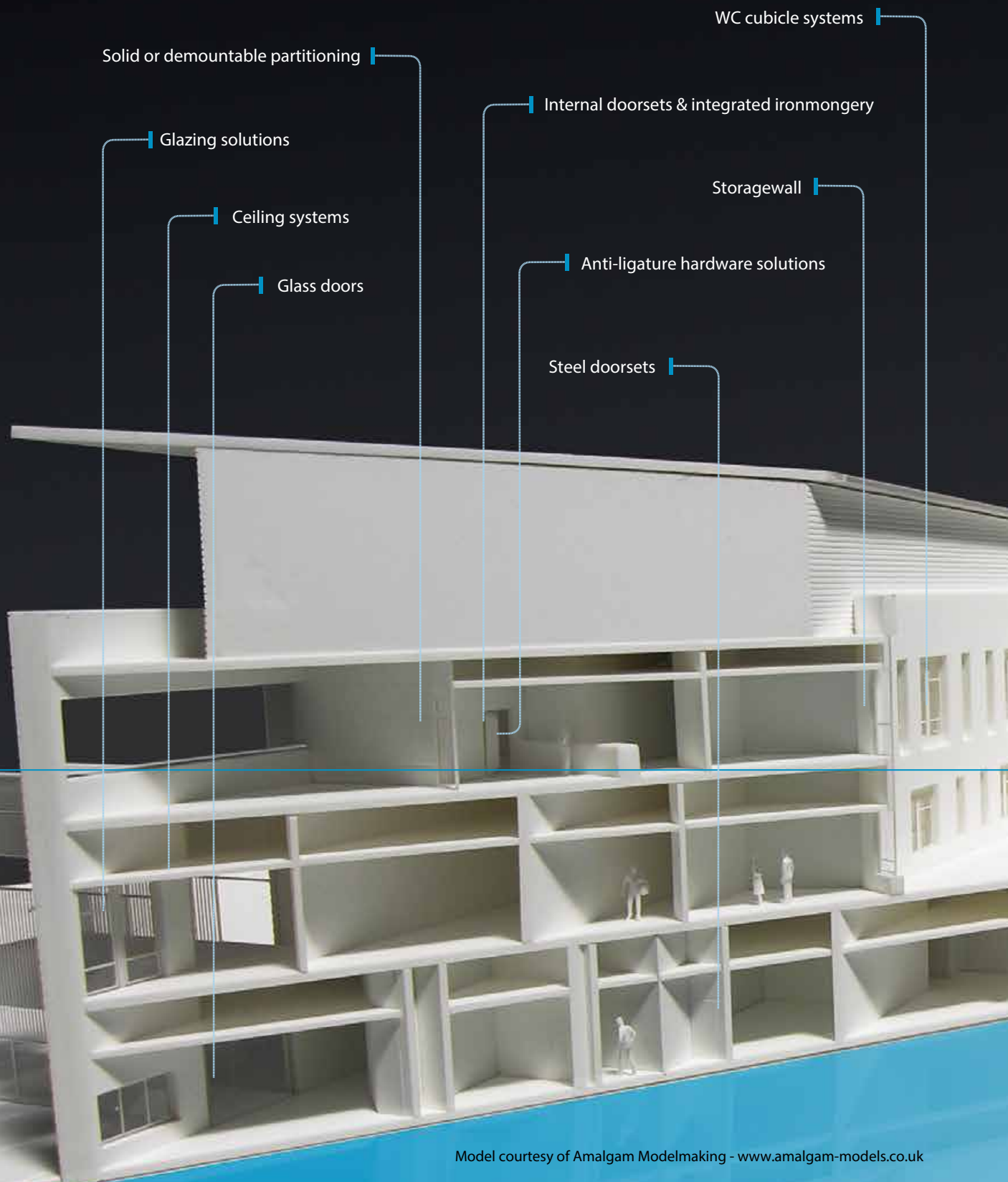
Respect - in our treatment of our employees, customers and suppliers

Innovation - by exploring all possibilities and generating new ideas in challenging circumstances

Accountability - at all times by upholding the highest standards of customer service and by adopting a 'can do' attitude in all aspects of our business.

A comprehensive portfolio

Supplying multiple product solutions from a single source



Solid or demountable partitioning

Glazing solutions

Ceiling systems

Glass doors

Internal doorsets & integrated ironmongery

Storagewall

Anti-ligature hardware solutions

Steel doorsets

WC cubicle systems

5 - 6

Laidlaw Interiors Group comprises some of the most prestigious brand names in the construction industry. Available from a single source this offers the benefits of integration of products and an integrated and co-ordinated specification and supply process.



The right supply chain partner

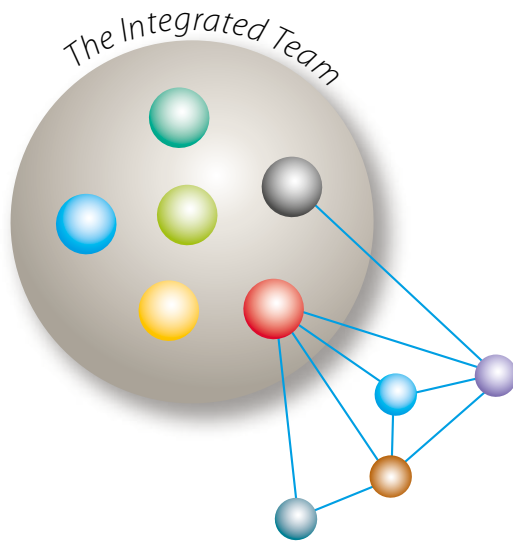
Working as part of an integrated team to deliver practical benefits

Laidlaw Interiors Group (LIG) has developed a collaborative working relationship by understanding and demonstrating the true values of a cohesive, integrated supply chain.

The ability to be flexible in communication and manufacturing within the vertical and horizontal supply teams enables integration benefits to be realised on many levels.

By their very nature, integrated supply chains will generally be project specific and transient, drawing upon previous experiences and working relationships. The principles and practices of these successful supply chains are then carried over to future projects.

The concept is not new, nor are the benefits associated to all parties, from reduced cost and risk to improved lead times and cost saving. The commitment from all parties to embrace the ethos of working as part of an integrated team is key to the success of a project or long term working relationship.



- | | | |
|---|---|---|
|  Client |  Main Contractor |  Quantity Surveyor |
|  Architect |  Engineers |  Designers |
|  Supply Partner LIG |  Specialist Contractor |  Manufacturer |



Supporting you from initial concept proposal to installation & maintenance

The benefits of partnering with Laidlaw Interiors Group include:

- 130 year history of providing quality products and service
- Full national coverage from regional centres
- International presence in The Middle East, Far East and India
- The largest independent supplier of architectural interior products in the UK
- Exceptional levels of support, offering
 - Technical support before, during and after specification
 - Advice on legislation and compliance
 - Full design, manufacturing and scheduling service
 - Up to date in-house and third party performance testing
 - Value engineering & management
 - Technical input into Building Information Modelling programmes (BIM)
 - Project liaison & management
 - Site surveys, design and installation
 - Project delivery
- Integrated supply of related building elements and products
- Continual programme of product development, testing & certification



It is an increasingly important requirement for any professional practice working in the building industry to seek to reduce their commercial risk when choosing suppliers. In so doing, they will naturally look for high levels of professionalism in the specification partners they engage.

With such a depth of knowledge covering a wide range of product areas, Laidlaw Interiors Group is able to provide the kind of reassurance that has made us the UK's largest independent specialist supplier to the construction industry.

Technical & manufacturing expertise

Investment in UK manufacturing benefits the product development programme

Laidlaw Interiors Group has extensive manufacturing capability and capacity and is committed to the continual development and improvement of its products and services in response to the growing demands through changes in legislation, advances in technology and the changing needs of the market.

A broad product portfolio represents extensive investment in manufacturing and testing facilities throughout the UK and India and ensures:

- A continual programme of product development and innovation
- Ability to respond quickly to bespoke manufacturing whenever required
- Continual product certification for fire, acoustic and structural performance
- Quality assurance and environmental standards can be constantly monitored

In addition to ISO 9001, ISO 9002, ISO 14001 and OHSAS 18001 accreditation, Laidlaw Interiors Group companies also carry specific product sector accreditations including, for example:

- Subscribers to NBS Plus
- RIBA approved suppliers of CPD seminars
- Founder members of the GAI Guildmark scheme endorsed by RIBA
- Achilles Building Confidence accredited
- Build Offsite members
- CHAS accredited



RS 10508



EMS 531228



OHS 580354



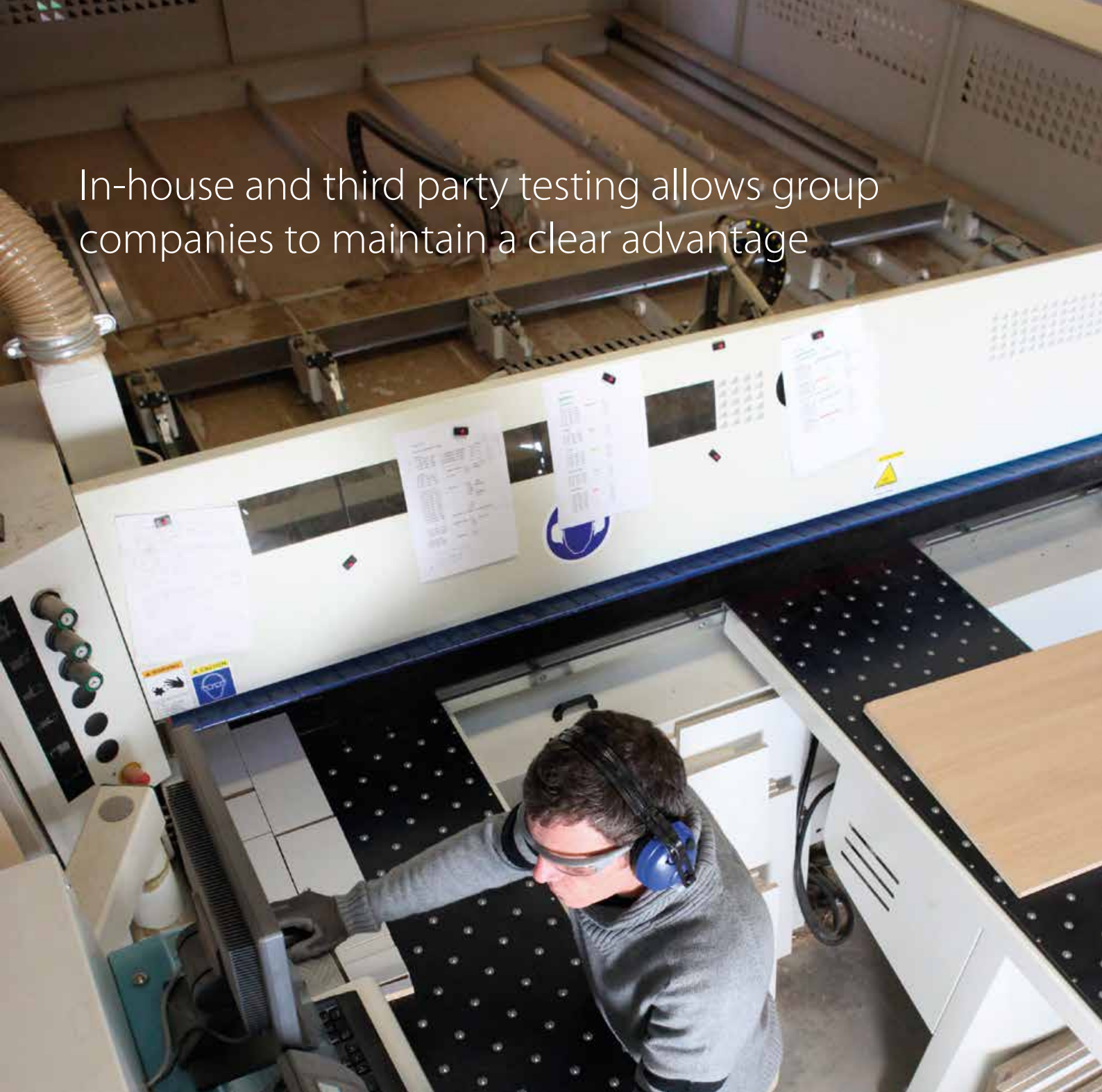
Endorsed by the RIBA



CPD PROVIDER



In-house and third party testing allows group companies to maintain a clear advantage



Comprehensive in-house testing facilities include a full size furnace for fire testing complete assemblies of doorsets and partitioning. Combined with other third party testing it provides up to date performance data which can feed into current 'Building Information Modelling' programmes.

Cycle testing, fire, acoustic and structural stability tests can be carried out on project specific assemblies, providing the client with the most comprehensive level of product certification available in the industry.



Internal space division

In-house design capability providing innovative and bespoke solutions

Komfort is the UK's market leader in the design and manufacture of commercial glazed, solid and demountable partition systems, laminate and veneered doors, movable walls, storagewall and washrooms. With the widest range of partition systems available within the industry Komfort can accommodate any style from contemporary to traditional.



In-house design and technical functions provide innovative and bespoke solutions when standard build methods cannot meet the client's unique requirements. All systems are stringently tested to European and British standards for fire, acoustic and structural performance. This guarantees the safest and widest product offering in the UK's commercial interiors sector and ensures office partitions conform to the building regulation requirements, most suited to the office fit out and refurbishment markets.

Komfort supply mainly through a nationwide network of approved installers and provide comprehensive training to ensure a high standard of finish is always achieved.



Experienced in nationwide supply chain agreements, Komfort provides logistics expertise alongside scaled project management. In-house capabilities also include design and technical expertise and an unrivalled understanding of the needs of the contractor and end user client gained from supplying large and complex projects over many years.

Komfort also provides a range of architectural glass solutions including bolted glass facades and atria, glass canopies, glass balustrades, glass floors, firescreens and bespoke glass assemblies.

To complement our partitioning systems we also have a dedicated in-house graphics team capable of producing an array of printed and applied graphics from simple bespoke manifestations through to full height printed graphics for internal or external applications.

*Opposite page: from top to bottom
Full height single glazed Polar partitioning with standard height glass doors
Curved single glazed Polar and doors with applied graphics
Double glazed Polar partitioning with oak veneer door
Full height printed graphics mounted on glass panels
White gloss KM³ Storagewall and single glazed Polar*

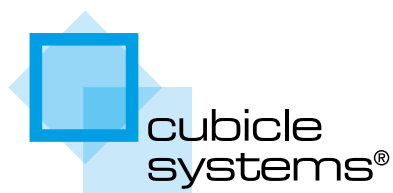


Right: Banded oak veneer panel Ls90 partitioning



From hygiene to high gloss

Specialist manufacture and installation of washroom solutions



13 - 14



Cubicle Systems is a long established company with a nationwide reputation as a leader in the design, manufacture and supply of washroom solutions, providing high levels of customer satisfaction from design through to installation.

We offer a wide range of options from high specification veneered and stainless steel systems through to laminate and duct mounted 'pre-plumbed' solutions offering quick, accurate and ultimately, hygienic installation.

Bespoke glass solutions

Partitioning and architectural glass



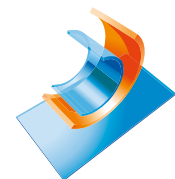
Glass and Glazing Federation



Tufwell Glass are specialists in the processing and installation of a wide range of high performance glass products including frameless glass partitioning.

Many of Tufwell's products and services are used to supply the architectural glazing and interiors market, providing specialist services in the production of toughened and laminated glass for example.

Using state of the art machines and finishing techniques Tufwell are dedicated to producing bespoke products quickly and efficiently, which keep order turn around time to a minimum.



**TUFWELL
GLASS**



The importance of doorsets

Performance driven timber and steel doorsets to suit all applications

Laidlaw Interiors Group Doorsets Division

The advent of CE marked doorsets brings into sharp focus the increasingly important role that the LIG Doorsets Division will play in the construction industry in the years to come.

The depth of knowledge, expertise and wealth of product solutions that our doorsets division is able to offer is truly second to none. From a simple budget doorset solution for social housing right through to hand crafted solid timber doorsets for some of our finest country houses, we have not just one solution, but many solutions for all types of application.

A number of specialist manufacturers including industry leading companies, Leaderflush Shapland and TDSL make up the Laidlaw Interiors Group Doorsets Division, all with their own brands offering solutions to slightly different market sectors.

We have doorset solutions in timber and steel for all commercial, education, healthcare, residential, retail, hospitality and transport applications supplied from our manufacturing facilities across the UK and in India.

Right: An example of Orbis veneered door with on-site painted frame

Below: Leaderflush Shapland manufacturing plant in Nottingham

As manufacturers with our own in-house testing facilities we are able to respond quickly to bespoke requirements which means we are able to satisfy your project requirements no matter how straight forward, unique, detailed or extensive they may be.

FITZPATRICK

Laidlaw

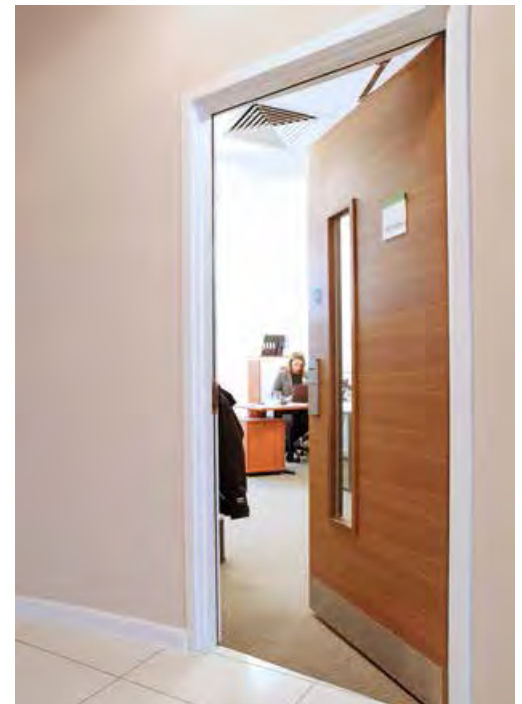


Leaderflush
Shapland



LONGDEN

INDIVIDUALLY CRAFTED DOORS
Beautiful since 1858



15 - 16

Opposite Page:

Top: Longden Weybridge two panel door glazed

Leaderflush Shapland veneer faced double doors

Centre: Laidlaw factory painted doorsets installed in Komfort partitioning

Bottom Left: External steel doorsets from Fitzpatrick

Bottom Right: TDSL manufacturing plant in Mansfield





Comprehensive doorset solutions

Bespoke timber doorsets with world class performance

Leaderflush Shapland provide a range of bespoke flush engineered doors and doorsets to meet today's performance requirements of fire resistance, acoustics, radiation shielding, hygiene and security, making the range the most comprehensive in the marketplace.



The brand has great flexibility providing bespoke solutions for any application from major PFI projects to small commercial developments using a huge choice of materials including hardwood, laminates, PVC and metals.

A comprehensive ironmongery and door furniture range enables complete doorsets to be sourced from a single manufacturer. Special design solutions have been developed to satisfy particular applications such as healthcare, pharmaceuticals, education and PFI projects.

Continuing product development and exhaustive performance testing enable the company to offer a wide scope of certified doorsets. Investment in full size in-house test facility allows continuous

product development and quality assurance checks including cyclic testing, mechanical properties and security performance. This innovative approach is also applied to customer service and procurement initiatives to meet the challenges of today's construction industry.

Urban Edge

Leaderflush Shapland recognises the needs of sectors such as key worker accommodation, budget hotels, student accommodation and city living are vastly different from those of other sectors. That's why we've formed Urban Edge, a dedicated division to serve the specific needs for doorsets in this market.

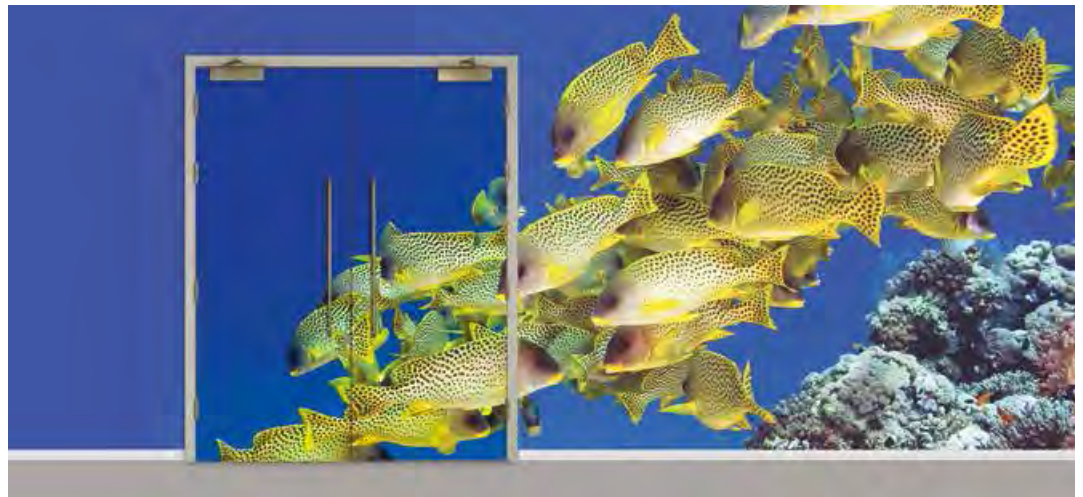
Our well established supply chain and capacity to deliver makes us the perfect choice for high volume developments like city apartments and student accommodation. Working extensively with architectural practices and designers, we deliver a product range that offers exceptional style and flexibility from a standard range to a more bespoke range, bringing an unrivalled product offering.



**Leaderflush
Shapland**



Urban Edge

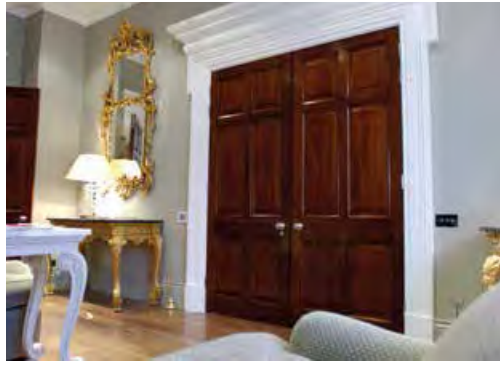




Top: High quality veneered timber doorsets
Centre: Plasform postformed laminate door
Bottom: Sentinel finger protection system

The skills of bespoke manufacturing

Where traditional craftsmanship meets state of the art performance




LONGDEN
INDIVIDUALLY CRAFTED DOORS
Beautiful since 1838

Longden hardwood interior doors and doorsets and associated internal joinery combine the highest quality of traditional craftsmanship with performance levels needed to meet today's technical criteria.

All products are made to order, allowing complete freedom in design and the capability of either replacing or replicating existing doors to keep in line with the existing building and its features. Glazing can be accommodated as part of the overall design by replacing specific panels within the design.

Longden's tradition of quality which had its origins in the 19th century continues into the 21st with doors of remarkable beauty, doors fit to grace some of the finest building projects of our age.

The Longden solid timber, bespoke panelled door set range has been gracing some of the UK's finest buildings for well over a hundred years. Many of our historic listed buildings have relied on Longden's traditional craftsmanship and expertise to maintain and preserve their heritage.

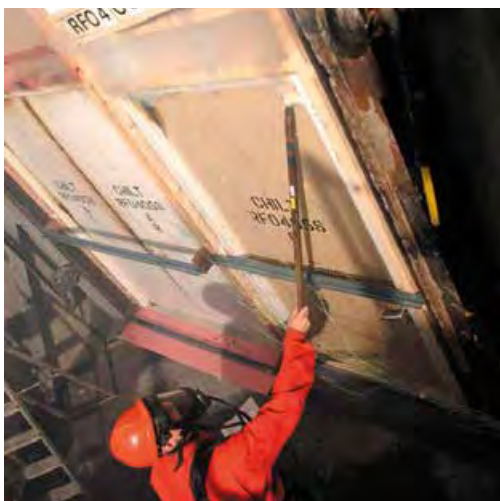
Accredited Specialist Doorsets

Offering a complete management package to specifiers, buyers and installers



TDSL is a specialist door manufacturer with manufacturing and sales facilities throughout the UK and India. Our product offering places very strong emphasis on stringent testing and certification. Wherever possible all our product ranges are rigorously tested in third party facilities using full size samples to provide the most comprehensive performance data available anywhere in the market.

With a wide spectrum of performance characteristics the TDSL product range can be specified with full confidence on a broad range of applications from our Audiospec acoustic doors to Plasdor PVC coated antibacterial doors for applications where ultimate hygiene is expected.



Our unique approach has developed through the way we source, manufacture and create services that allow us to offer a complete project management package to specifiers, buyers and installers. Smooth running of a project is vital and our project managers are available to oversee every stage of every contract - from feasibility through to delivery. All aspects of the function are carefully monitored to deliver a fit for purpose product on time, every time.

Performance steel doorsets

Suitable for internal as well as external applications

Fitzpatrick metal doors and doorsets allow the specifier and end user to choose from a comprehensive range of steel doorset options to satisfy the requirements of the most demanding projects.

The design, specification, manufacture and installation of metal doorsets is a complex and technical process. Fitzpatrick can offer assistance to specifiers and architects to ensure that products meet expectations. Expert technical support and a full NBS-based specification facility is available, supported by a team of specification managers. Project management services provide a single point of contact at all stages.

The Fitzpatrick installation service includes on-site survey, measurement and installation. This helps to maintain quality from specification through manufacture to commissioning and ensures that there are no issues with certification.



FITZPATRICK



Access, automatics and ironmongery

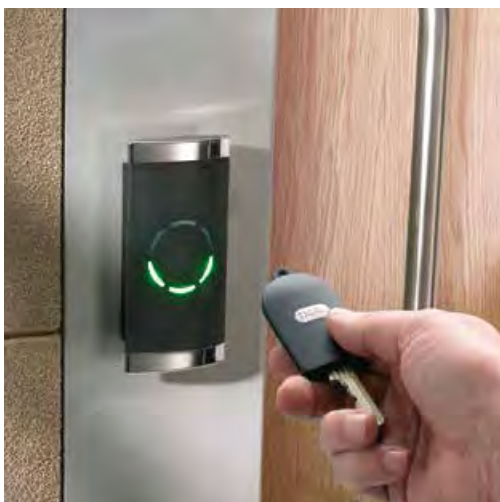
A proven track record in commercial and residential applications



Saturn is a specialist in the supply and installation of automatically operated door solutions, access control and building management systems, architectural ironmongery and integrated doorsets.

Saturn has developed a number of unique partnerships with main contractors and specifiers and actively engages in the specification and supply process to provide a high level of focused customer support at all stages to deliver projects on time and on budget.

The access control products and automatic door systems available to Saturn afford some of the most technologically advanced systems available on the market, including biometric authentication systems and automatic operators for sliding, folding, swinging and revolving door applications.



A trusted name for 130 years

Architectural ironmongery, balustrading access control and integrated doorsets



Endorsed by the
RIBA



Laidlaw Solutions has built a worldwide reputation for providing the highest levels of product and service to the construction industry, being the largest independent supplier of architectural ironmongery, handrail & balustrading, access control systems and integrated doorsets to the commercial, retail, education, healthcare and leisure sectors of the market.

Operating from 11 regional UK sales centres and offices in Dubai and Hong Kong, a staff in excess of 200 is able to provide industry leading technical and specification guidance through to project delivery.

Laidlaw's comprehensive ranges of market leading solutions include the unique Orbis branded ranges of architectural ironmongery and a comprehensive portfolio of fully engineered stainless steel, nylon or timber handrail and balustrading solutions.

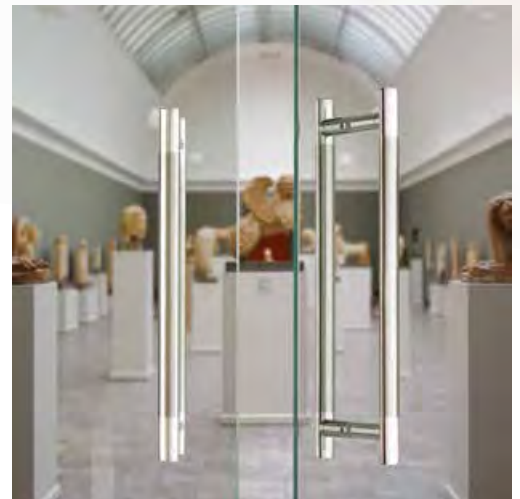
Laidlaw pioneered the development of the integrated timber doorset. As part of the Laidlaw Interiors Group Doorsets division, the Orbis doorsets range illustrates the key advantages of an integrated product supply combining highly engineered doorsets, factory prepared and fitted with hardware selected from the largest range of high quality architectural ironmongery available in the market.

Laidlaw



23 - 24

High quality ironmongery options are available in a wide selection of styles and finishes to suit any interior application.





Above: Typical Orbis laminate faced doorset complete with factory prepared Orbis ironmongery.
Far Left: The Orbis ranges of architectural ironmongery incorporate the complete hardware requirement for most buildings.
Left: The Orbis brand includes a comprehensive range of anti-ligature products.

From site survey to installation

Handrail and balustrading providing life safety and security



Endorsed by the
RIBA



Laidlaw Balustrading Solutions is able to provide one of the most comprehensive handrail & balustrading services available in the UK, with systems precision manufactured in Germany using the highest quality materials.



Balustrading
Solutions



25 - 26



Laidlaw Balustrading Solutions' range of options include fully bespoke highly engineered systems, componentised systems for on-site assembly or an on-site fabricated system for applications requiring an economic but fully compliant system.

Handrailing can be co-ordinated with other Laidlaw architectural ironmongery finishes or with timber rails to match doorset veneers.

The Laidlaw Balustrading Solutions service provides specifiers and contractors with a complete turnkey solution, from initial site survey and detailed design drawings through to full installation.

Controlling building access

From simple code locks to state of the art biometric access control



Controlling the access rights into and within a building requires a great deal of careful and informed decision making. It can call for a complex integration of a wide range of issues concerning the management of the building and its occupants in order to optimise energy resources, keep control not only of who has access but to be able to link it to time management software for example.

We frequently liaise with the client, architect and contractor to develop a solution which is driven by all such considerations of use, type of application, budget and the future expansion of the system should it be required.

Whether your solution calls for a hardwired biometric access control and workforce management software or simply a stand-alone access control unit using Network on Card technology, we have a depth of experience which is readily available to you for all sizes of project.

The depth of our involvement is up to you and can include design, supply, installation and even user training programmes if required on a large selection of systems.



Endorsed by the
RIBA



Access Control Solutions



Locking Systems

The Laidlaw Locking Systems range of services encompasses all levels of cylinder based master keyed locking.

Masterkeying can be accommodated using a wide selection of protected or non protected cylinder systems.

Partnerships in practice

Close collaboration between all parties from planning through to installation



27 - 28

Project: The Life Centre, Wigan

Architects: LCE & AStudio

Contractor: Morgan Sindall

Stringent requirements for fire and acoustic performance were the principal drivers for a multi-million pound public service and leisure hub in the centre of Wigan, leading to the specification of LIG company products throughout.

Following discussions with architects LCE / AStudio, main contractor Morgan Sindall and sub-contractor Parpac, Komfort Workspace's partitioning systems and Laidlaw Solutions'

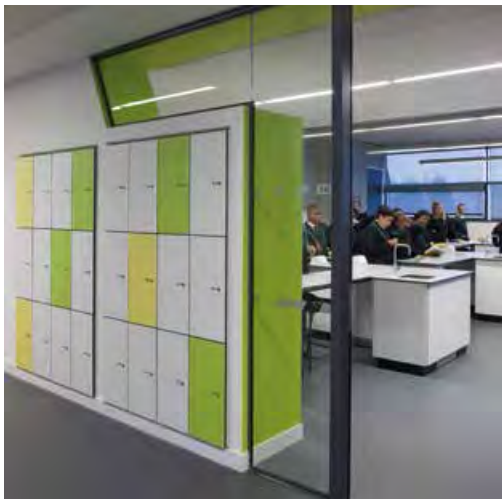
handrail & balustrading, doorsets and ironmongery were specified for The Life Centre.

The project entailed close co-ordination between all parties to ensure the project was delivered efficiently and in view of the large amounts of glass utilised in the design, to accommodate substantial health and safety strategies.

Partnerships in practice

RIBA Stirling Prize for Best Building 2011

Evelyn Grace Academy - Architect Zaha Hadid



Project: Evelyn Grace Academy, London

Architects: Zaha Hadid & Bamber and Reddan

Contractor: Stortford Interiors (UK) Ltd

Architects Bamber and Reddan selected Komfort's PolarTec and Polar systems to meet the academy's drive for excellence and to ensure the building was light and fresh. Komfort worked in collaboration with the architects to design the flexible partitioning system to produce angles at ceiling height replicating the geometric shapes of the building's exterior. All the partitioning and internal doors were installed by approved contractor Stortford Interiors.

Partnerships in practice

Working closely with the contractor produces quick results



29 - 30

*Project: Fluor Headquarters, Farnborough
Architects: Edge Architecture & Design
Contractor: Stortford Interiors (UK) Ltd*

Using a combination of Polar, Ls90 and full height walnut doors Komfort worked closely with the contractors, Stortford Interiors to deliver a series of private, individual offices finished to the very high standard expected from Fluor, an engineering and construction company of international repute.

Jim Nania, Managing Director of Stortford Interiors said: "The installation at Fluor's offices went extremely smoothly and was in fact a relatively straightforward project for us. I believe that three key reasons can be attributed to this - namely our vast experience of working with the Ls90 and Single Glazed Polar products, the training of the Stortford Interiors delivery team, and the fact that we were able to work very closely with a dedicated team from Komfort who excelled. Despite extremely tight deadlines, we delivered the project on time as a result of good planning, and constant communication with Komfort."

Partnerships in practice

Veneered doorsets supplied to meet the highest environmental standards



Project: Mint Hotel

Architects: Bennetts Associates

Contractor: SJ Eastern

The project, which was designed to the highest environmental standards, included the provision of extensive renewable energy provisions for the hotel. Laidlaw Solutions was chosen to supply doorsets, ironmongery and access control following its extensive experience of the hotel and leisure sector.

Working closely with the main contractor and specialist supply-and-fit joinery subcontractor SJ Eastern, in excess of 2000 quarter-cut veneered doorsets were supplied. By providing an integrated doorset package from a single source, the potential for on-site disruption associated with multi-supplier provision of doors, frames, architraves and ironmongery was avoided.

Partnerships in practice

When performance, durability and service are required



31 - 32

Project: Chelsea & Westminster Hospital
Architects: Studio 4
Main Contractor: BAM

A £40 million redevelopment will help to provide world class children's services, improved facilities for people living with HIV, a new outpatient area and better emergency care.

Over 300 doorsets from Leaderflush Shapland's Designer, Extended Performance and Plasform ranges were specified and constructed using EnduraCor, an exclusive engineered

performance core, whose durability and stability make it especially suitable for harsh environments

Door finishes include veneer, laminate and unique Hygieniform, an antimicrobial laminate whose durability and robust qualities make it suitable for severe duty applications such as busy hospital environments.

Other performance characteristics achieved include 90 minute fire protection and sound reduction of up to 32dB (Rw).

Partnerships in practice

One Canada Square

Uncompromising aesthetics and performance



Project: Bank of New York Mellon

Architects: BDG Workfutures

Contractor: BW Interiors

The world's largest securities servicing and asset management firm was created when The Bank of New York and Mellon Financial Corporation merged.

When it came to refurbishing One Canada Square in the heart of Canary Wharf, Komfort Workspace was chosen as the preferred supplier of partitions. Double glazed Polar was selected as the backdrop to the stunning and bright reception area. Komfort's SwitchGlass film was applied on the sidewall of the seminar area, so that, when needed, this room could become private at the flick of a switch.

Single glazed Polar was also installed to delineate a break out area for informal meetings and relaxation. Komfort's Blinds and Graphics division also supplied the striking graphics depicting the beauty and intricacies of a dandelion.

Specialist contractor BW Interiors carried out the fit-out. The success of the Canary Wharf project meant that Komfort's single glazed Polar was also specified for BNY Mellon's subsequent scheme in Manchester.



Partnerships in practice

Well versed in the supply of integrated packages for the education sector



Project: Goldsmiths University, London
Architects: Stride Treglown
Main Contractor: Willmott Dixon

33 - 34

Goldsmiths University London commissioned architects Stride Treglown to design a £20m purpose-built Department of Media and Communications incorporating a 250-seat lecture theatre, 120 seat screening room, TV and photographic studios, editing suites and offices.

Laidlaw Solutions collaborated with main contractor Willmott Dixon and scheduled the supply of fully integrated doorset packages with factory fitted ironmongery and adjoining glass screens for the four-storey building.

Installation was carried out in collaboration with SJ Eastern Carpentry and Joinery.

Peter Fenton of Stride Treglown commented, *"Laidlaw provided us with a comprehensive service and backed it up with excellent technical assistance; essential when dealing with such large and complex buildings"*.

Partnerships in practice

Today's retail environments can be some of the most demanding



Project: Westfield White City
Clients: M&S, House of Fraser, Boots and FCUK

Europe's biggest retail outlet in Europe, the £1.6 billion, 42-acre, 300-store Westfield Shopping Centre in White City saw several leading retailers use Laidlaw doorsets, handrail and ironmongery systems. These included the prestigious Marks and Spencer, House of Fraser, Boots and FCUK outlets.

Laidlaw worked closely with each individual client to satisfy their specific requirements and resulted in the supply and installation of a wide and varied range of product from Laidlaw's Square Top handrail & balustrade system at the flagship M&S store to the Orbis branded

Commercial and Classic ranges of architectural ironmongery at the centre's Northwest Bus Interchange.

"Westfield asked retailers to produce something special for the centre and this offered a great opportunity for us to trial a range of new design features. We have focused on helping our customers to shop easily in an environment which feels really special."

Tessa Clark,
[Head Of Store Design, Marks & Spencer]

Partnerships in practice

Product development to meet the demands of the healthcare sector



To combat the spread of waterborne bacterial infections, a range of pre-plumbed, duct mounted modules has been designed by Cubicle Systems in association with Twyford Bathrooms to comply with HTM 64 and Department of Health guidance.

The combination and strength of two leading companies has been brought together to create Pre-plumbed Healthcare Solutions, offering an integrated approach to today's issues of infection control.

35 - 36



With the introduction of the Disability Discrimination Act and later the Equality Act, Laidlaw Interiors Group have invested a great deal of effort right across product sectors in providing solutions which take into account less able users. Laidlaw Solutions is able to offer a full programme of washroom and shower room fittings for disabled people in anti-microbial stainless steel and solid nylon.

Corporate social responsibility

Driving commercial activities to benefit our customers, staff and the environment

Laidlaw Interiors Group is committed to carrying out its commercial activity in a socially responsible manner for the benefit of our customers, suppliers and staff under our ISO 14001 accreditation.

The Group carries out extensive due diligence on all supply sources to ensure compliance with environmental standards and best practices.

Wherever possible, Laidlaw Interiors Group companies use suppliers that are certified by the Forestry Stewardship Council (FSC) and Pan European Forest Certification (PEFC).

As part of our working practices we work with our supply partners, contractors and clients to assist in meeting requirements for environmental ratings including:

- BREEAM and SKA rating assessments
- To support continuous investment in cleaner technology, recovering and recycling waste materials
- Participating in the 'Recipro' scheme for diverting construction surplus and re-usable materials
- To provide all data required to feed into Building Information Modelling (BIM) tools

Laidlaw Interiors Group recognises that working conditions, which are safe and promote good health are vital to achieving business excellence. We therefore aim to conduct our business in a way that presents minimum risk of injury or ill health to our colleagues, suppliers, visitors or customers so far as reasonably practicable, and gives rise to no damage to our plant, equipment, materials or any other property as a result of accidents, fires or dangerous occurrences.

To this end, the Company will:

- As a minimum comply with all relevant statutory legislation, and always look towards best practice
- Provide a working environment that presents a minimal risk to health
- Ensure all plant and equipment is proactively maintained to ensure safe use
- Take all reasonable steps to prevent accident, illness or injury
- Provide safety equipment and personal protective equipment when necessary and enforce its use
- Have a formal Management System that continues to meet the requirements of the OHSAS 18001: 2007 Standard



Laidlaw Interiors Group companies are an equal opportunities employer and an Investor in People offering both graduate development and apprenticeship schemes throughout the group.





How to contact us



Laidlaw Interiors Group

www.laidlawinteriorsgroup.com

Tel: 0845 303 2773

Strawberry Lane, Willenhall, West Midlands WV13 3RS

MIDDLE EAST	Laidlaw Gulf LLC, PO Box 185292, Dubai, United Arab Emirates	T: +971 4885 7404
SOUTH EAST ASIA	Laidlaw Asia Ltd, Room 2/1 - 2nd Floor, On Hing Mansion 156-164 Queens Road East, Wan Chai, Hong Kong	T: +852 6897 6092



Cubicle Systems

www.cubiclesystems.co.uk

NEW MILTON	1-3 Nova Business Unit, Gore Rd Industrial Estate, New Milton, Hampshire BH25 6SA	T: 01425 615585
-------------------	---	-----------------



Fitzpatrick Doors

www.fitzpatrickmetaldors.com

NOTTINGHAM	Sales - Milnhay Road, Langley Mill, Nottingham NG16 4AZ	T: 01773 530500
BIRMINGHAM	Production - Unit 2, Rabone Park, Rabone Lane, Smethwick, Birmingham B66 2NN	T: 01773 530500



Komfort

www.komfort.com

BIRMINGHAM	Unit 2, Rabone Park, Rabone Lane, Smethwick, Birmingham B66 2NN	T: 0121 555 0300
	Globe House, Parkrose Industrial Estate, Middlemore Road, Smethwick, Birmingham B66 2DR	T: 0121 555 0333
CRAWLEY	Unit 10, Gatwick Distribution Centre, Whittle Way, Crawley, West Sussex RH10 9RT	T: 01293 577890
GLASGOW	Showroom - The Skyhouse, 18 Elliot Place, Glasgow G3 8EP	T: 0113 395 6565
HORSHAM	Ashurst, Broadlands Business Campus, Langhurstwood Rd, Horsham, W.Sussex RH12 4QP	T: 01403 390300
LEEDS	Sales & Showroom - Unit 2, Intermezzo Drive, Stourton Link, Leeds LS10 1DF	T: 0113 395 6565
	Blinds & Graphics - Unit 2, Intermezzo Drive, Stourton Link, Leeds LS10 1DF	T: 0113 395 6592
LONDON	Showroom - 14 Bonhill Street, London EC2A 4BX	T: 0207 256 5701

37 - 38



Laidlaw Solutions

www.laidlaw.net

BARNSTAPLE	Unit 1, Brannam Crescent, Roundswell Business Park, Barnstaple EX31 3TD	T: 01271 311920
BRISTOL	Unit 4, Markeside Industrial Estate, Albert Road, St. Philips, Bristol BS2 0XS	T: 0117 300 3980
CARDIFF	Unit A2, Cook Court, Pacific Business Park, Cardiff CF24 5HJ	T: 029 2047 1808
GATESHEAD	Unit 1, Halifax Court, Halifax Road, Dunston, Gateshead, Tyne & Wear NE11 9JT	T: 0191 461 4100
KINMEL BAY	Unit 37, Tir Llwyd Industrial Estate, St Asaph Avenue, Kinmel Bay, Rhyl, LL18 5JA	T: 01745 332151
LIVERPOOL	3 - 5 Century Building, Summers Road, Brunswick Business Park, Liverpool L3 4BL	T: 0151 709 9438
LONDON	The Building Centre, 26 Store Street, London WC1E 7BT	T: 0207 436 0779
PERTH	PO Box 15, Arran Road, Perth PH1 3DU	T: 01738 620581
SALFORD	Centurion House, Dakota Avenue, Salford, Manchester M50 2PU	T: 0161 848 0101
SHEFFIELD	Unit 17, Riverside Court, Don Road, Sheffield S9 2TJ	T: 0114 243 8916
WILLENHALL	Strawberry Lane, Willenhall, West Midlands WV13 3RS	T: 01902 600400
LOCKING SYSTEMS	Unit 5 Halifax Court, Halifax Road, Dunston, Gateshead, Tyne & Wear NE11 9JT	T: 01902 600488



BARNSTAPLE
NOTTINGHAM

Leaderflush Shapland
www.leaderflushshapland.co.uk

Raleigh Works, Barnstaple, Devon EX31 2AA
Milnhay Road, Langley Mill, Nottingham NG16 4AZ

T: 01271 321007
T: 01773 530500



SHEFFIELD

Longden Doors
www.longdendoors.co.uk

55 Parkwood Road, Sheffield, South Yorkshire S3 8AH

T: 0114 270 6330



YORK

Saturn Architectural
www.saturnarchitectural.com

Unit 9 Harrier Court, Airfield Business Park, Elvington, York YO41 4EA

T: 01904 608864



LEICESTER
LONDON
MANCHESTER
MANSFIELD
SHRIVENHAM
STOCKTON

TDSL
www.tds-l.com

Amicare House, Thurmaston Village Court, 651 Melton Road, Thurmaston, Leicester LE4 8EB
The White House, 14A Commercial Road, Tunbridge Wells, Kent TN1 2RR
Greengate Industrial Park, Greenside Way, Middleton, Manchester M24 1SW
Millenium Business Park, Concorde Way, Mansfield, Nottingham NG19 7JZ
Unit 29C Shrivenham Hundred Business Park, Majors Road, Watchfield, Swindon SN6 8TZ
Varsity House, Falcon Court, Preston Farm Business Park, Stockton-on-Tees TS18 3TS

T: 0116 269 3262
T: 01892 512625
T: 0161 284 4109
T: 01623 420 664
T: 01793 787 500
T: 01642 702 320

DELHI
GUJARAT

213/214 Square One Complex, Saket, New Delhi - 110017, India
Plot 224-227, Sector-IV, KASEZ, Gandhidam, Distt. Kutch, Gujarat 370 230, India

T: 011 4660 5015
T: +91 2836 253 512



CRAWLEY

Tufwell Glass
www.tufwell.com

Church Court, Church Industrial Estate, Lowfield Way, Lowfield Heath, Crawley RH11 0PQ

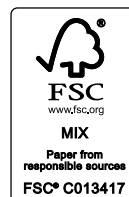
T: 01293 533 533



Laidlaw Interiors Group
Strawberry Lane
Willenhall
West Midlands
WV13 3RS

0845 303 2773

www.laidlawinteriorsgroup.com



As part of continual efforts to reduce our carbon footprint, this brochure is printed on a FSC® certified paper stock which originates from well-managed forests, controlled sources and recycled wood or fibre as indicated by the logo opposite.

