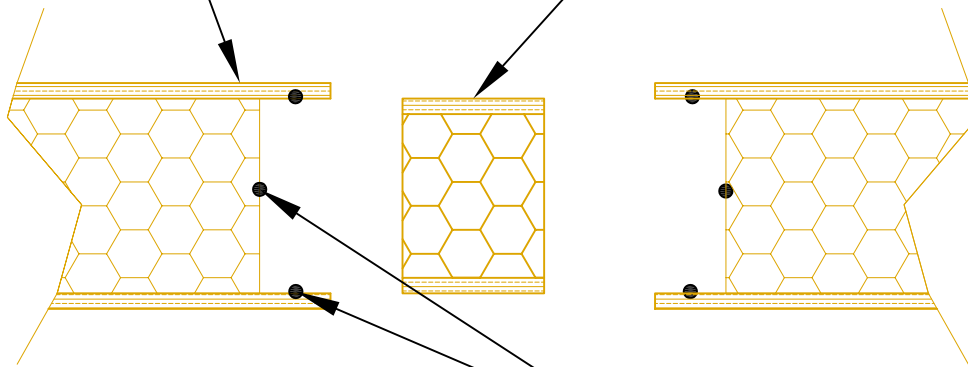


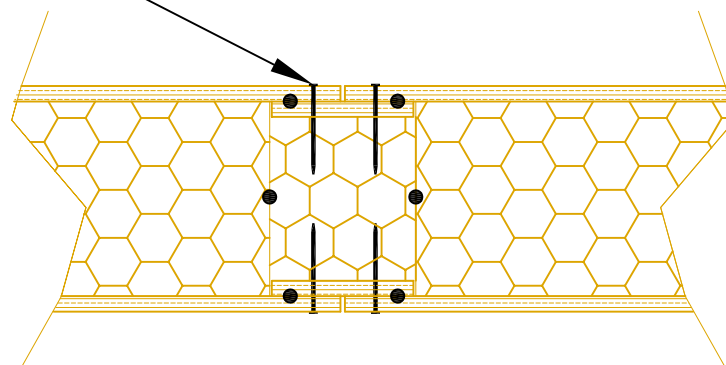
SIP Build Floor, Wall,  
or Roof Panel

Panel Spline



Fasten Splines Using  
2.8 x 63mm  
Galvanised Nails @  
150mm c/c

Continuous bead of SIP Build  
Adhesive/Sealant



Structural Insulated Panels

SIP Build Limited  
Unit 2, Expressway Industrial Estate, Turnall Road, Ditton,  
Widnes, Cheshire, WA8 8RB  
Tel: 0870 850 2264 Fax: 0870 850 2265  
Email: [info@sipbuildltd.com](mailto:info@sipbuildltd.com)

Drawing Title:

Typical Panel Spline Joint

Revisions:

Date:

October 2006

Drawn by:  
KA

Scale:  
1:5

