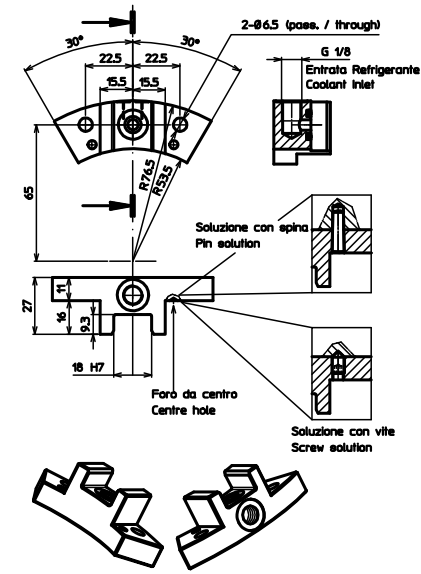
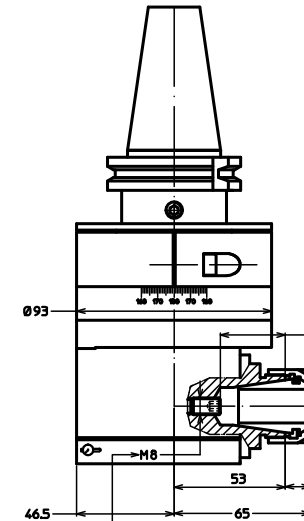
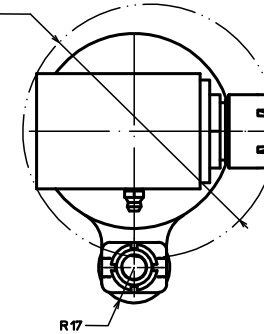


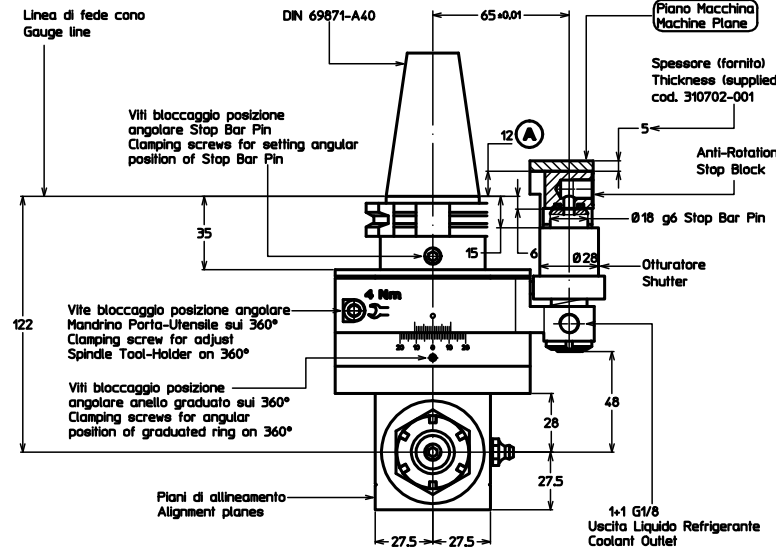
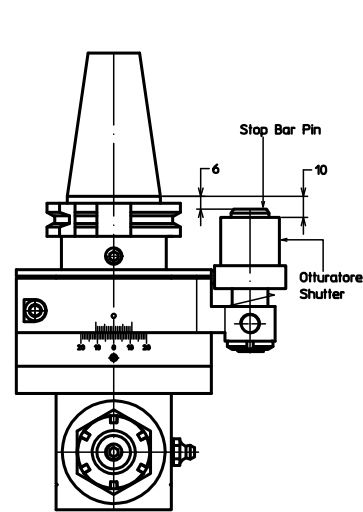
STOP BLOCK antirrotante standard codice 311201-025  
standard anti-rotation STOP BLOCK code 311201-025



Diametro minimo del foro  
in cui entra la testa senza utensile  
Minimum bore diameter through  
which unfooted head can pass.



Capacità max di bloccaggio Utensile  
Max Clamping Capacity



Testa angolare libera (In macchina)  
Angle head free (inside machine)

Fuori macchina  
(caricata nel magazzino utensili)  
Outside machine  
(charged into tool magazine)

## TESTA ANGOLARE A 90° tipo A25CN-SK40 90° ANGLE HEAD type A25CN-SK40

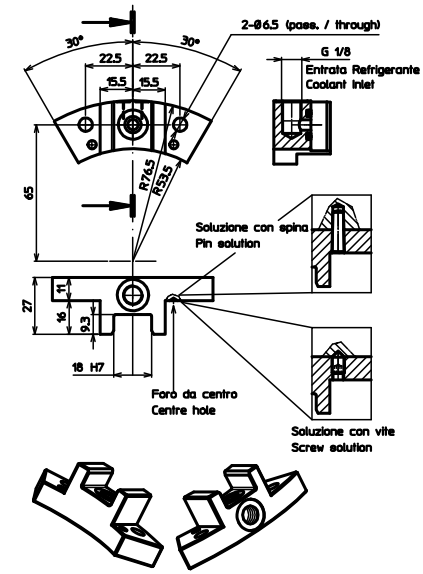
### SPECIFICHE TECNICHE / TECHNICAL FEATURES

|  |  |
|--|--|
| Modello / Type                                 | A25CN-SK40   |
| Codice / Code                                  | 124915.100   |
| Mandrini per pinza / Spindle for collet        | ER 25  |
| Rotazione presa di forza / Main drive rotation | SX / LH  |
| Rotazione mandrino / Spindle rotation          | DX / RH  |
| Rapporto di trasmissione / Transmission ratio  | 1:1  |
| Velocità max / Max speed                       | 5000 rpm   |
| Coppia / Torque                                | 18 Nm @ 1000 rpm<br>13.2 Nm @ 2000 rpm<br>8.6 Nm @ 4000 rpm<br>7.3 Nm @ 5000 rpm |
| Spinta Max. Mandrino / Spindle max. thrust     | 450 N  |
| Peso / Weight                                  | 4.5 Kg   |
| Lubrificazione a grasso / Grease lubricated    | KLÜBER ISOFLEX NBU 15  |

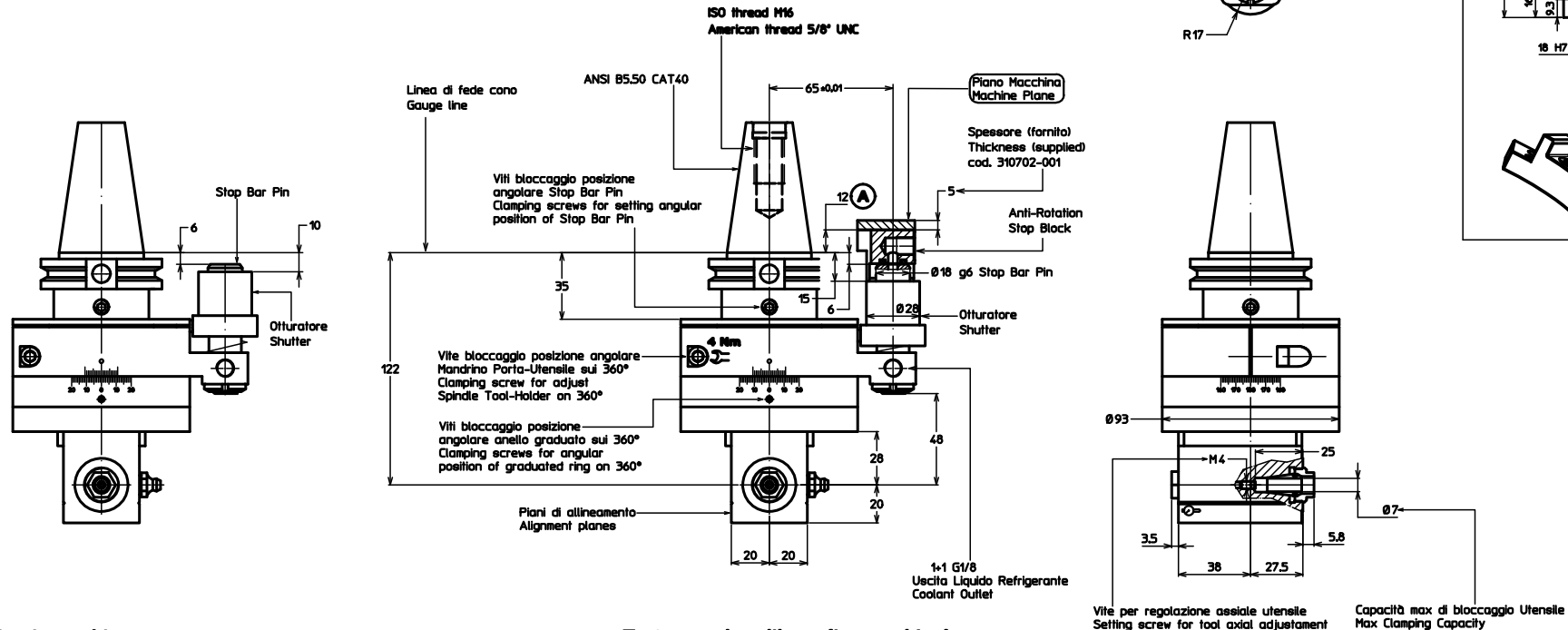
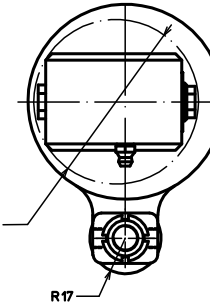
### ACCESSORI / ACCESSORIES (optional)

|   |            |
|---|------------|
| Pinza ER25 DIN 6499/B                               | 411225.100 |
| ER25 Collet DIN 6499/B                              |            |
| Pinza di maschiatura ET-1-25<br>(con compensazione) | 401225.200 |
| Tapping collet ET-1-25<br>(with compensation)       |            |
| Pinza di maschiatura ER25 con quadro                | 411225.200 |
| Tapping collet ER25 with square                     |            |

STOP BLOCK antirrotante standard codice 31201-025  
standard anti-rotation STOP BLOCK code 31201-025



Diametro minimo del foro  
in cui entra la testa  
Minimum bore diameter through  
which untooled head can pass.



Fuori macchina  
(caricata nel magazzino utensili)  
Outside machine  
(charged into tool magazine)

Testa angolare libera (In macchina)  
Angle head free (inside machine)

### TESTA ANGOLARE A 90° tipo A11CN-CAT40 90° ANGLE HEAD type A11CN-CAT40

#### SPECIFICHE TECNICHE / TECHNICAL FEATURES

Modello / Type A11CN-CAT40  
Codice / Code 124997.100  
Mandrini per pinza / Spindle for collet ER 11  
Rotazione presa di forza / Main drive rotation SX / LH  
Rotazione mandrino / Spindle rotation DX / RH  
Rapporto di trasmissione / Transmission ratio 1:1  
Velocità max / Max speed 8000 rpm  
Coppia / Torque 6.6 Nm @ 2000 rpm  
4.5 Nm @ 4000 rpm  
3.5 Nm @ 6000 rpm  
2.8 Nm @ 8000 rpm

Spinta Max. Mandrino / Spindle max. thrust 330 N  
Peso / Weight 3.5 Kg  
Lubrificazione a grasso / Grease lubricated

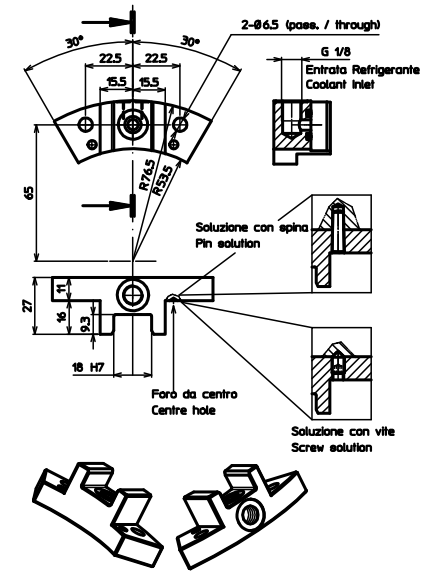
#### ACCESSORI / ACCESSORIES (optional)

Pinza ER11 DIN 6499/B 41211.100  
ER11 Collet DIN 6499/B

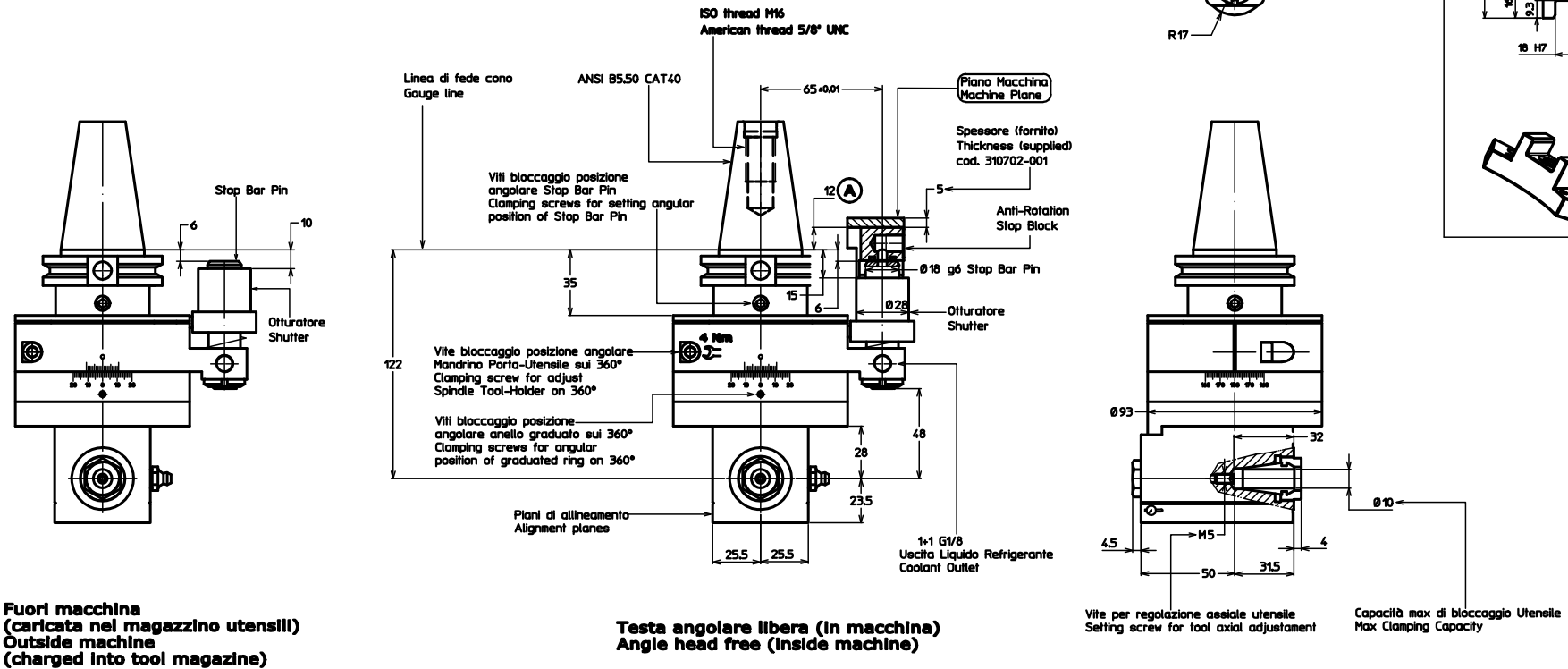
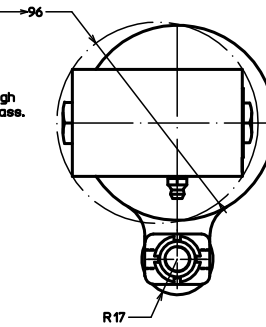
KLÜBER ISOFLEX NBU 15



STOP BLOCK antirrotante standard codice 311201-025  
standard anti-rotation STOP BLOCK code 311201-025



Diametro minimo del foro  
in cui entra la testa  
Minimum bore diameter through  
which unfooled head can pass.



**Fuori macchina**  
**(caricata nel magazzino utensili)**  
**Outside machine**  
**(charged into tool magazine)**

**Testa angolare libera (In macchina)**  
**Angle head free (inside machine)**

**TESTA ANGOLARE A 90° tipo A16CN-CAT40**  
**90° ANGLE HEAD type A16CN-CAT40**

**SPECIFICHE TECNICHE / TECHNICAL FEATURES**

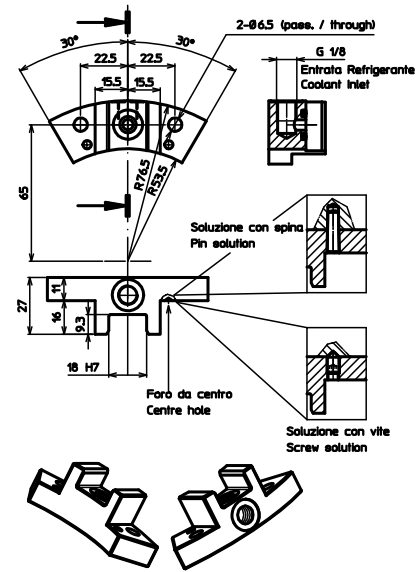
|  |  |
|--|--|
| Modello / Type                                 | A16CN-CAT40  |
| Codice / Code                                  | 124996.100   |
| Mandrini per pinza / Spindle for collet        | ER 16  |
| Rotazione presa di forza / Main drive rotation | SX / LH  |
| Rotazione mandrino / Spindle rotation          | DX / RH  |
| Rapporto di trasmissione / Transmission ratio  | 1:1  |
| Velocità max / Max speed                       | 7000 rpm   |
| Coppia / Torque                                | 18 Nm @ 1000 rpm<br>13.2 Nm @ 2000 rpm<br>8.6 Nm @ 4000 rpm<br>5.6 Nm @ 7000 rpm |
| Spinta Max. Mandrino / Spindle max. thrust     | 450 N  |
| Peso / Weight                                  | 4 Kg   |
| Lubrificazione a grasso / Grease lubricated    | KLÜBER ISOFLEX NBU 15  |

**ACCESSORI / ACCESSORIES (optional)**

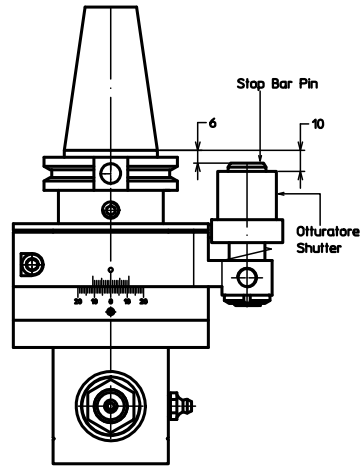
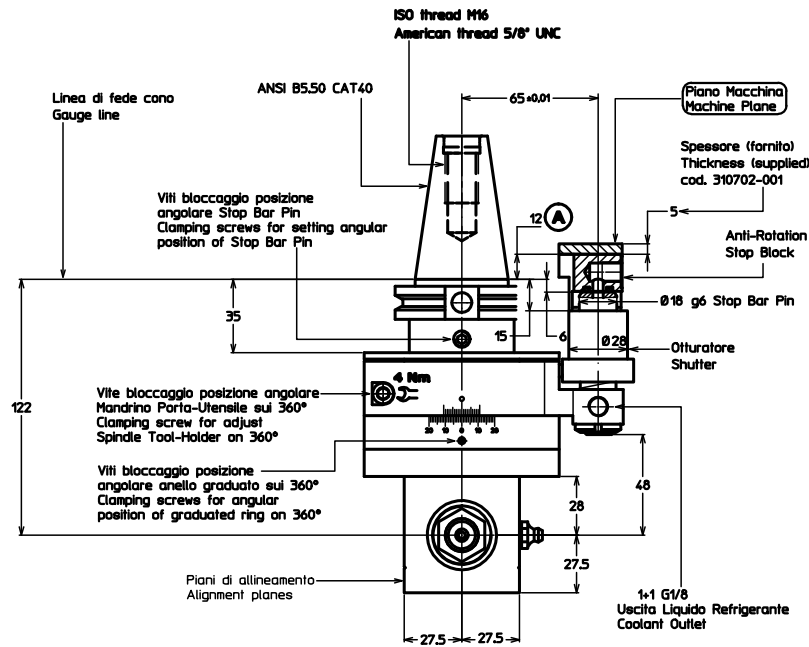
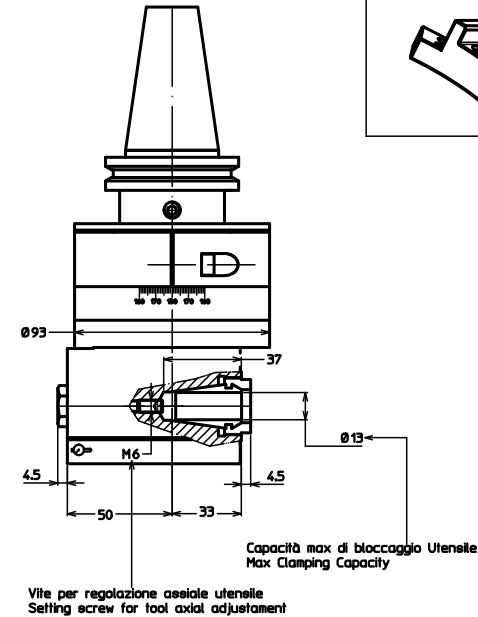
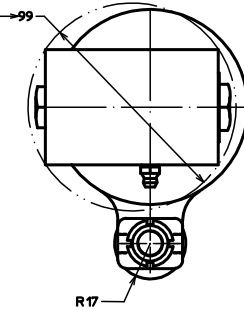
|   |            |
|---|------------|
| Pinza ER16 DIN 6499/B                               | 411216.100 |
| ER16 Collet DIN 6499/B                              |            |
| Pinza di maschiatura ET-1-16<br>(con compensazione) | 401216.200 |
| Tapping collet ET-1-16<br>(with compensation)       |            |
| Pinza di maschiatura ER16 con quadro                | 411216.200 |
| Tapping collet ER16 with square                     |            |



STOP BLOCK antirrotante standard codice 311201-025  
standard anti-rotation STOP BLOCK code 311201-025



Diametro minimo del foro  
in cui entra la testa senza utensile  
Minimum bore diameter through  
which untooled head can pass.



**Fuori macchina**  
(caricata nel magazzino utensili)  
**Outside machine**  
(charged into tool magazine)

**Testa angolare libera (In macchina)**  
**Angle head free (inside machine)**

### TESTA ANGOLARE A 90° tipo A20CN-CAT40 90° ANGLE HEAD type A20CN-CAT40

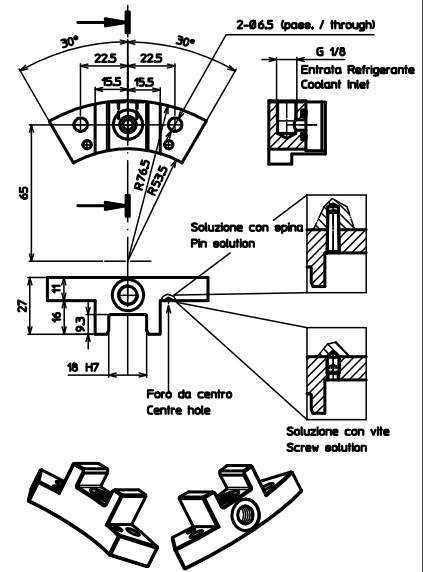
**SPECIFICHE TECNICHE / TECHNICAL FEATURES**

|  |  |
|--|--|
| Modello / Type                                 | A20CN-CAT40  |
| Codice / Code                                  | 124995.100   |
| Mandrini per pinza / Spindle for collet        | ER 20  |
| Rotazione presa di forza / Main drive rotation | SX / LH  |
| Rotazione mandrino / Spindle rotation          | DX / RH  |
| Rapporto di trasmissione / Transmission ratio  | 1:1  |
| Velocità max / Max speed                       | 6000 rpm   |
| Coppia / Torque                                | 18 Nm @ 1000 rpm<br>13.2 Nm @ 2000 rpm<br>8.6 Nm @ 4000 rpm<br>6.4 Nm @ 6000 rpm |
| Spinta Max. Mandrino / Spindle max. thrust     | 450 N  |
| Peso / Weight                                  | 4.1 Kg   |
| Lubrificazione a grasso / Grease lubricated    | KLÜBER ISOFLEX NBU 15  |

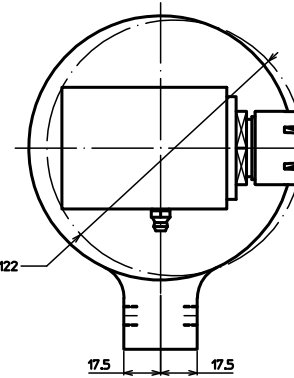
**ACCESSORI / ACCESSORIES (optional)**

|  |            |
|--|------------|
| Pinza ER20 DIN 6499/B                            | 411220.100 |
| ER20 Collet DIN 6499/B                           |            |
| Pinza di maschiatura ET-1-20 (con compensazione) | 401220.200 |
| Tapping collet ET-1-20 (with compensation)       |            |
| Pinza di maschiatura ER20 con quadro             | 411220.200 |
| Tapping collet ER20 with square                  |            |

STOP BLOCK antirrotante standard codice 31201-025  
standard anti-rotation STOP BLOCK code 31201-025



Diametro minimo del foro  
in cui entra la testa senza utensile  
Minimum bore diameter through  
which untooled head can pass.



ISO thread M24  
American thread 1" UNC

ANSI B5.50 CAT50

Viti bloccaggio posizione  
angolare Stop Bar Pin  
Clamping screws for setting angular  
position of Stop Bar Pin

Piano Macchina  
Machine Plane

Spessore (fornito)  
Thickness (supplied)  
cod. 310702-001

Anti-Rotation  
Stop Block

Ø18 g6 Stop Bar Pin

Otturatore  
Shutter

Linea di fede cono  
Gauge line

Vite bloccaggio posizione  
angolare Mandrino Porta-Utenziale sui 360°  
Clamping screw for adjust  
Spindle Tool-Holder on 360°

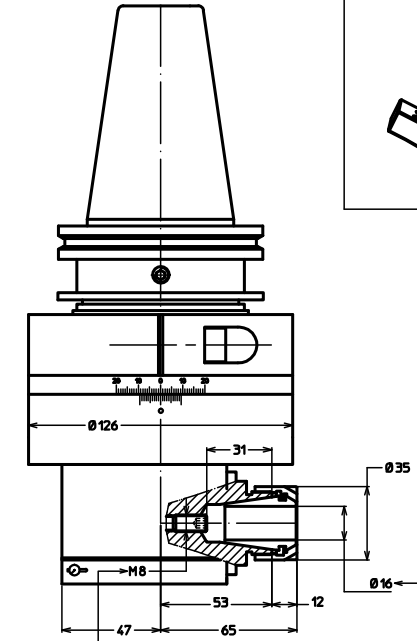
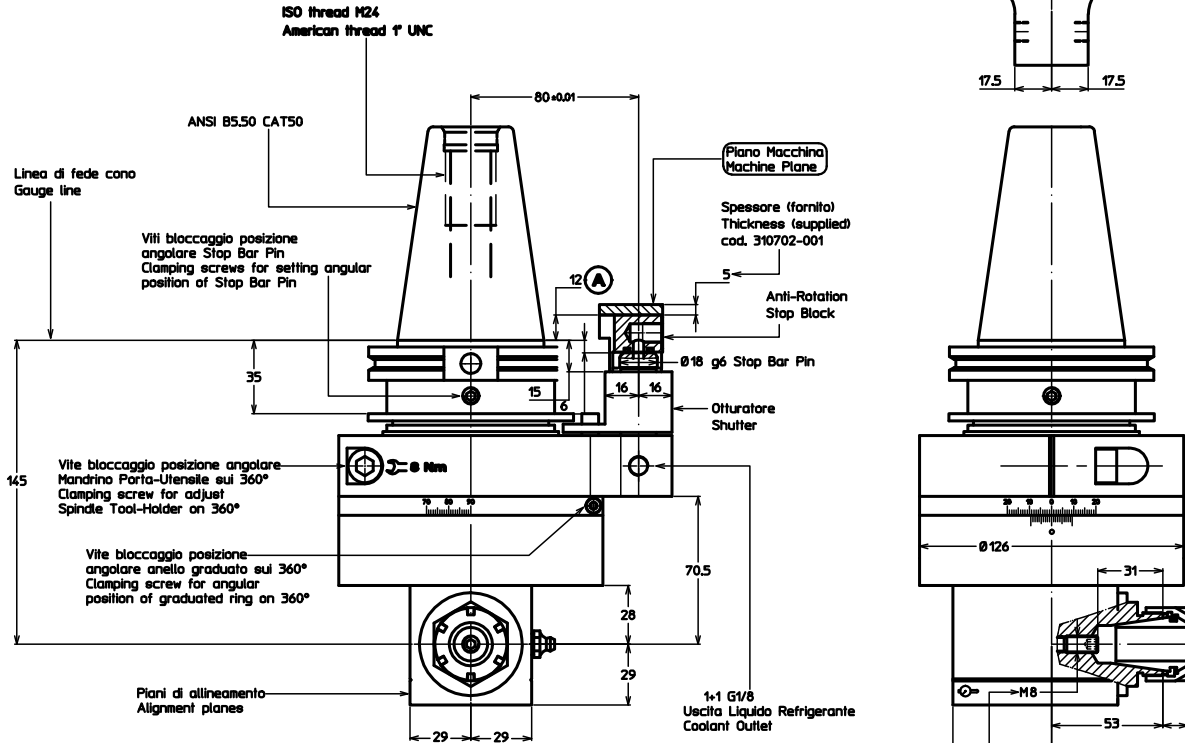
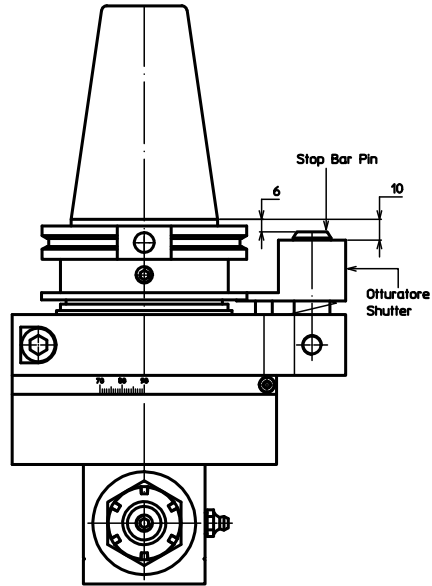
Vite bloccaggio posizione  
angolare anello graduato sui 360°  
Clamping screw for angular  
position of graduated ring on 360°

Piani di allineamento  
Alignment planes

1-1 G1/8  
Uscita Liquido Refrigerante  
Coolant Outlet

Vite per regolazione assiale utensile  
Setting screw for tool axial adjustment

Capacità max di bloccaggio Utensile  
Max Clamping Capacity



Fuori macchina  
(caricata nel magazzino utensili)  
Outside machine  
(charged into tool magazine)

Testa angolare libera (In macchina)  
Angle head free (Inside machine)

### TESTA ANGOLARE A 90° tipo A25CN-CAT50 90° ANGLE HEAD type A25CN-CAT50

#### SPECIFICHE TECNICHE / TECHNICAL FEATURES

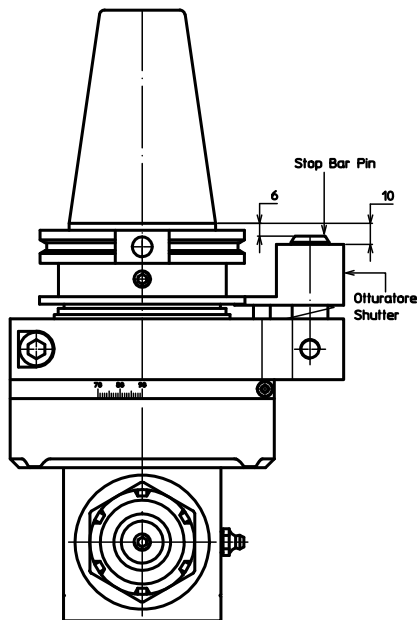
Modello / Type A25CN-CAT50  
Codice / Code 124994.100  
Mandrini per pinza / Spindle for collet ER 25  
Rotazione presa di forza / Main drive rotation SX / LH  
Rotazione mandrino / Spindle rotation DX / RH  
Rapporto di trasmissione / Transmission ratio 1:1  
Velocità max / Max speed 5000 rpm  
Coppia / Torque 18 Nm @ 1000 rpm  
13.2 Nm @ 2000 rpm  
8.6 Nm @ 4000 rpm  
7.3 Nm @ 5000 rpm

Spinta Max. Mandrino / Spindle max. thrust 1000 N  
Peso / Weight 9.2 Kg  
Lubrificazione a grasso / Grease lubricated

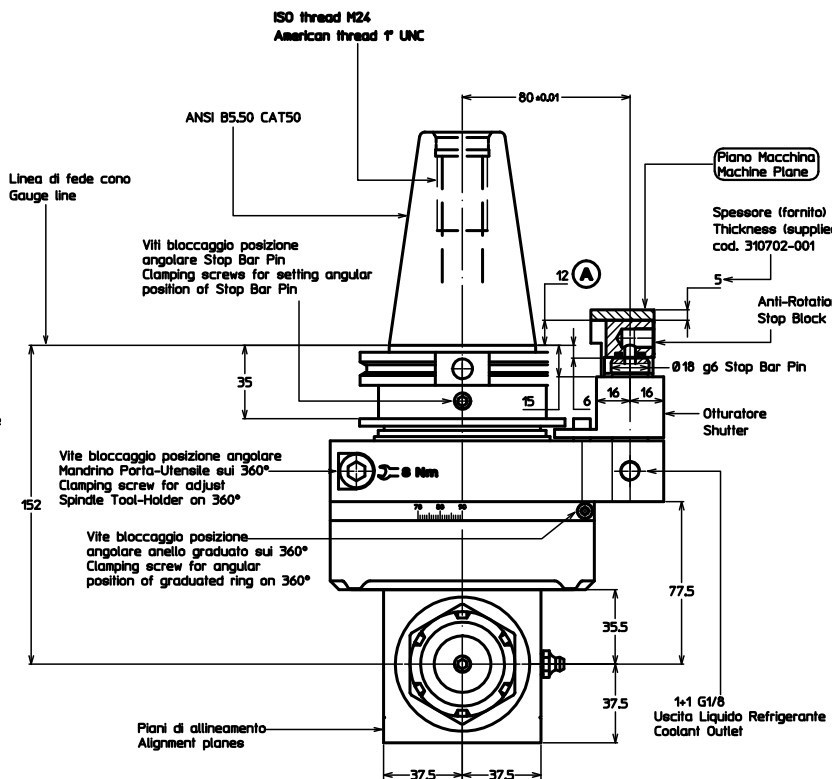
#### ACCESSORI / ACCESSORIES (optional)

Pinza ER25 DIN 6499/B 411225.100  
ER25 Collet DIN 6499/B  
Pinza di maschiatura ET-1-25 401225.200  
(con compensazione)  
Tapping collet ET-1-25  
(with compensation)  
Pinza di maschiatura ER25 con quadro 411225.200  
Tapping collet ER25 with square

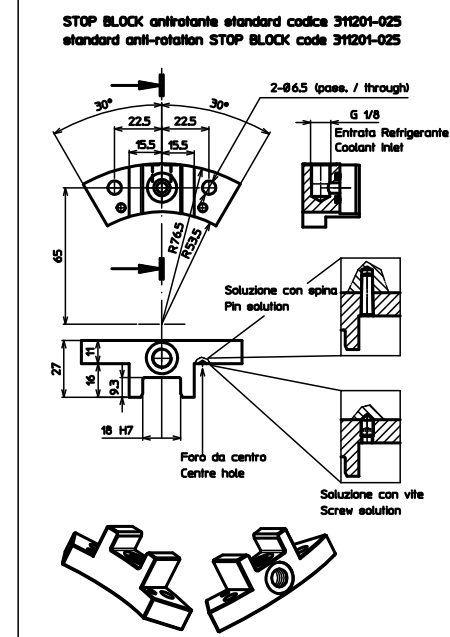
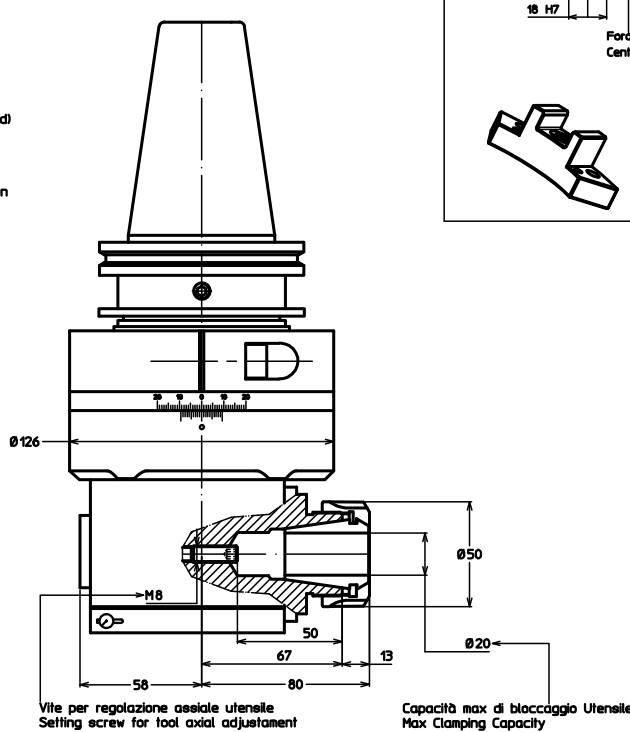
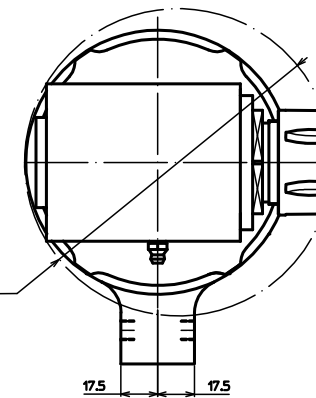




**Fuori macchina**  
(caricata nel magazzino utensili)  
**Outside machine**  
(charged into tool magazine)



**Testa angolare libera (in macchina)**  
**Angle head free (inside machine)**



**TESTA ANGOLORE A 90° tipo A32CN-CAT50**  
**90° ANGLE HEAD type A32CN-CAT50**

**SPECIFICHE TECNICHE / TECHNICAL FEATURES**

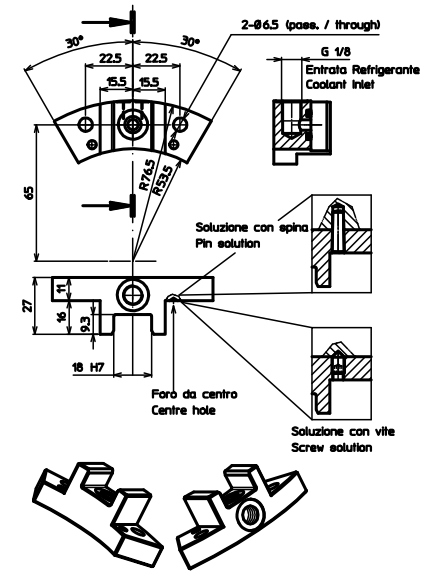
|  |  |
|--|--|
| Modello / Type                                 | A32CN-CAT50  |
| Codice / Code                                  | 124993.100   |
| Mandri per pinza / Spindles for collet         | ER 32  |
| Rotazione presa di forza / Main drive rotation | SX / LH  |
| Rotazione mandrino / Spindle rotation          | DX / RH  |
| Rapporto di trasmissione / Transmission ratio  | 1:1  |
| Velocità max / Max speed                       | 4000 rpm   |
| Coppia / Torque                                | 33.8 Nm @ 1000 rpm<br>26 Nm @ 2000 rpm<br>14.7 Nm @ 4000 rpm |
| Spinta Max. Mandrino / Spindle max. thrust     | 1200 N   |
| Peso / Weight                                  | 11.2 Kg  |
| Lubrificazione a grasso / Grease lubricated    | KLÜBER ISOFLEX NBU 15  |

**ACCESSORI / ACCESSORIES (optional)**

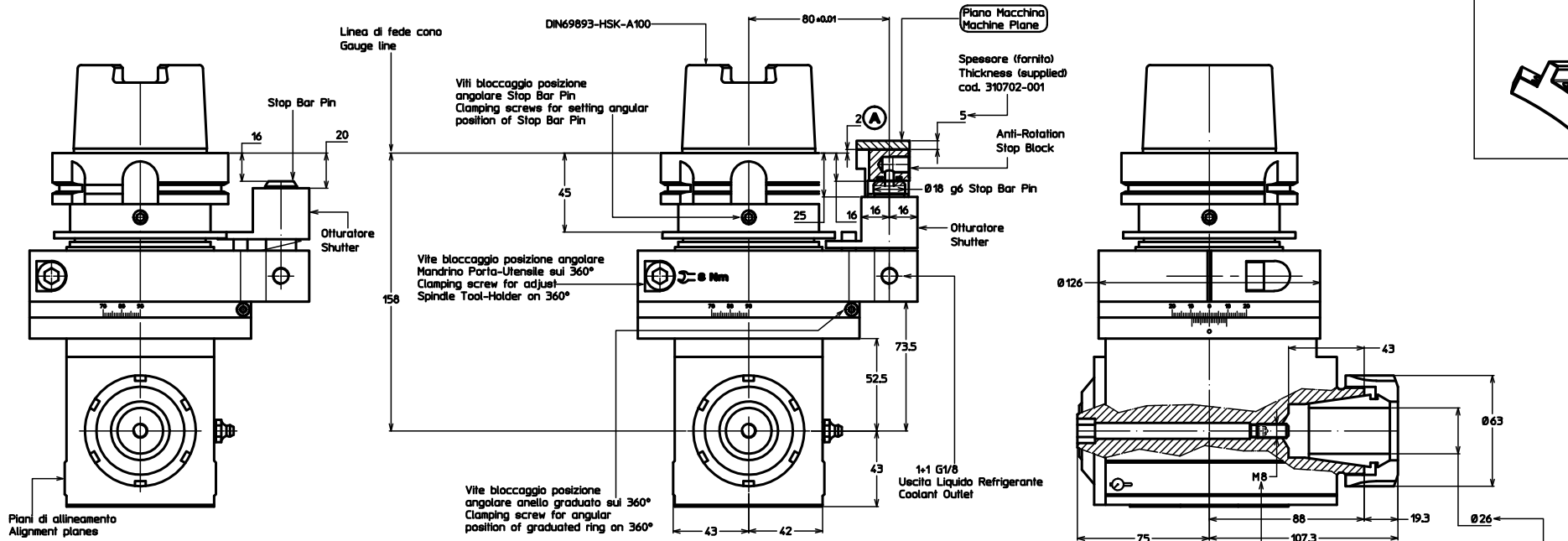
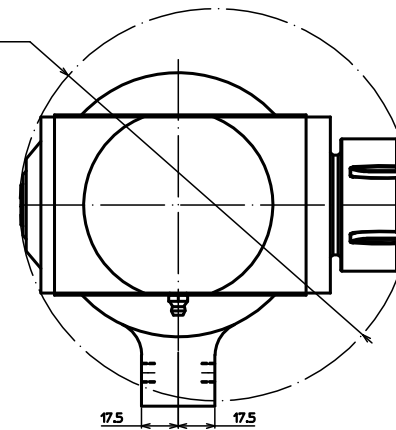
|   |            |
|---|------------|
| Pinza ER32 DIN 6499/B                               | 411232.100 |
| ER32 Collet DIN 6499/B                              |            |
| Pinza di maschiatura ET-1-32<br>(con compensazione) | 401232.200 |
| Tapping collet ET-1-32<br>(with compensation)       |            |
| Pinza di maschiatura ER32 con quadro                | 411232.200 |
| Tapping collet ER32 with square                     |            |



STOP BLOCK antirrotante standard codice 31201-025  
standard anti-rotation STOP BLOCK code 31201-025



Diametro minimo del foro  
in cui entra la testa senza utensile  
Minimum bore diameter through  
which untooled head can pass.



Piani di allineamento  
Alignment planes

**Fuori macchina**  
(caricata nel magazzino utensili)  
**Outside machine**  
(charged into tool magazine)

**Testa angolare libera (in macchina)**  
**Angle head free (inside machine)**

Vite per regolazione assiale utensile  
Setting screw for tool axial adjustment

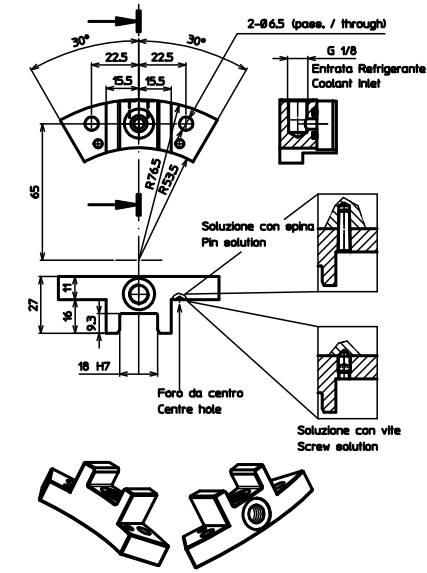
Capacità max di bloccaggio Utensile  
Max Clamping Capacity

**TESTA ANGOLARE A 90° tipo A40CN-HSK100**  
**90° ANGLE HEAD type A40CN-HSK100**

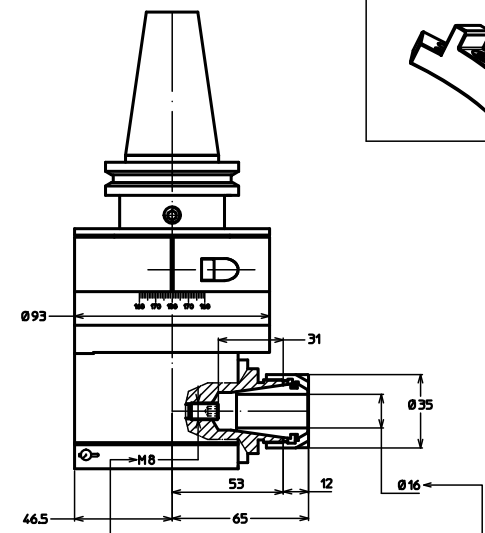
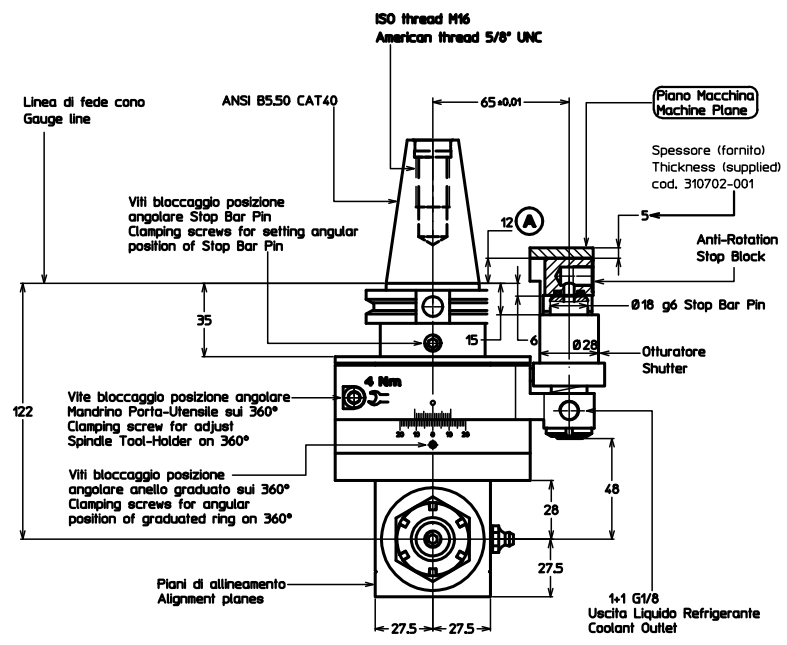
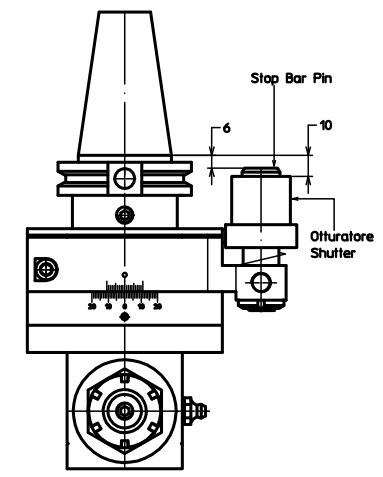
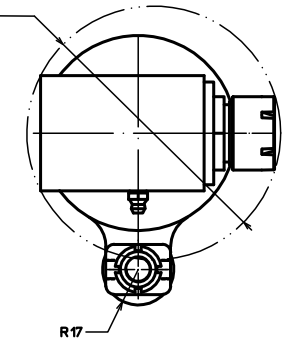
| SPECIFICHE TECNICHE / TECHNICAL FEATURES       |                       | ACCESSORI / ACCESSORIES (optional)   |            |
|--|-----------------------|--------------------------------------|------------|
| Modello / Type                                 | A40CN-HSK100          | Pinza ER40 DIN 6499/B                | 411240.100 |
| Codice / Code                                  | 124992.100            | ER40 Collet DIN 6499/B               |            |
| Mandrini per pinza / Spindles for collet       | ER 40                 |                                      |            |
| Rotazione presa di forza / Main drive rotation | SX / LH               | Pinza di maschiatura ET-1-40         | 401240.200 |
| Rotazione mandrino / Spindle rotation          | DX / RH               | (con compensazione)                  |            |
| Rapporto di trasmissione / Transmission ratio  | 1:1                   | Tapping collet ET-1-40               |            |
| Velocità max / Max speed                       | 3500 rpm              | (with compensation)                  |            |
| Coppia / Torque                                | 49 Nm @ 1000 rpm      |                                      |            |
|  | 34 Nm @ 2000 rpm      | Pinza di maschiatura ER40 con quadro | 411240.200 |
|  | 23 Nm @ 3500 rpm      | Tapping collet ER40 with square      |            |
| Spinta Max. Mandrino / Spindle max. thrust     | 1350 N                |                                      |            |
| Peso / Weight                                  | 14.6 Kg               |                                      |            |
| Lubrificazione a grasso / Grease lubricated    | KLÜBER ISOFLEX NBU 15 |                                      |            |



STOP BLOCK antirrotante standard codice 311201-025  
standard anti-rotation STOP BLOCK code 311201-025



Diametro minimo del foro in cui entra la testa senza utensile  
Minimum bore diameter through which unfooted head can pass.



Capacità max di bloccaggio Utensile  
Max Clamping Capacity

Fuori macchina  
(caricata nel magazzino utensili)  
Outside machine  
(charged into tool magazine)

Testa angolare libera (In macchina)  
Angle head free (inside machine)

### TESTA ANGOLARE A 90° tipo A25CN-CAT40 90° ANGLE HEAD type A25CN-CAT40

SPECIFICHE TECNICHE / TECHNICAL FEATURES

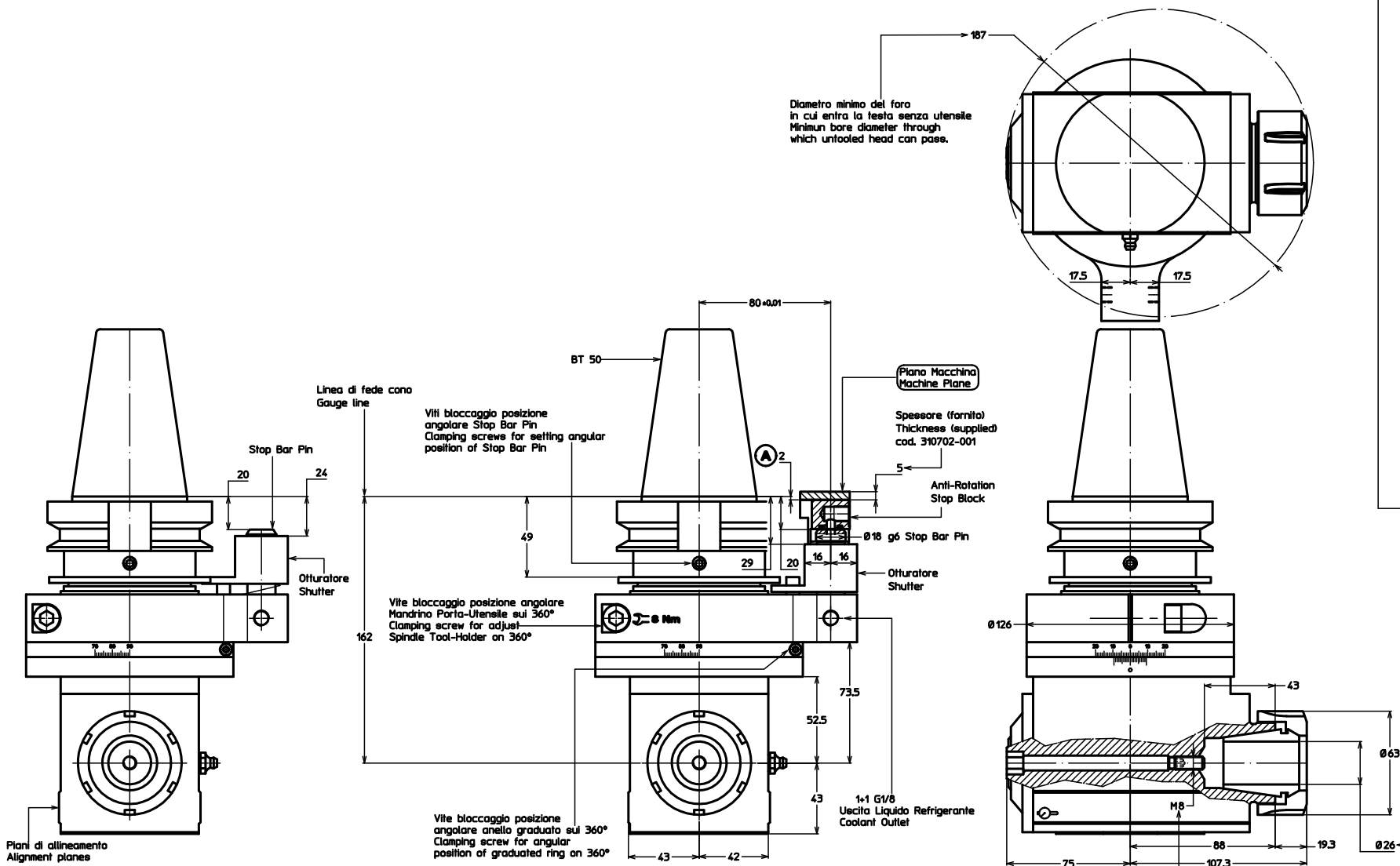
|  |  |
|--|--|
| Modello / Type                                 | A25CN-CAT40  |
| Codice / Code                                  | 124985.100   |
| Mandrini per pinza / Spindle for collet        | ER 25  |
| Rotazione presa di forza / Main drive rotation | SX / LH  |
| Rotazione mandrino / Spindle rotation          | DX / RH  |
| Rapporto di trasmissione / Transmission ratio  | 1:1  |
| Velocità max / Max speed                       | 5000 rpm   |
| Coppia / Torque                                | 18 Nm @ 1000 rpm<br>13.2 Nm @ 2000 rpm<br>8.6 Nm @ 4000 rpm<br>7.3 Nm @ 5000 rpm |
| Spinta Max. Mandrino / Spindle max. thrust     | 450 N  |
| Peso / Weight                                  | 4.5 Kg   |
| Lubrificazione a grasso / Grease lubricated    | KLÜBER ISOFLEX NBU 15  |

ACCESSORI / ACCESSORIES (optional)

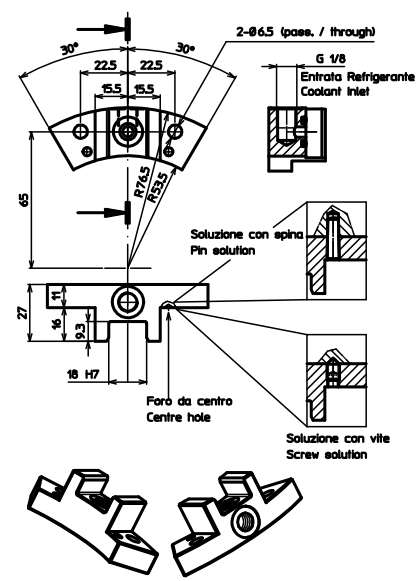
|  |            |
|--|------------|
| Pinza ER25 DIN 6499/B                            | 411225.100 |
| ER25 Collet DIN 6499/B                           |            |
| Pinza di maschiatura ET-1-25 (con compensazione) | 401225.200 |
| Tapping collet ET-1-25 (with compensation)       |            |
| Pinza di maschiatura ER25 con quadro             | 411225.200 |
| Tapping collet ER25 with square                  |            |







STOP BLOCK antirrotante standard codice 31201-025  
standard anti-rotation STOP BLOCK code 31201-025



**Fuori macchina**  
(caricata nel magazzino utensili)  
**Outside machine**  
(charged into tool magazine)

**Testa angolare libera (in macchina)**  
**Angle head free (inside machine)**

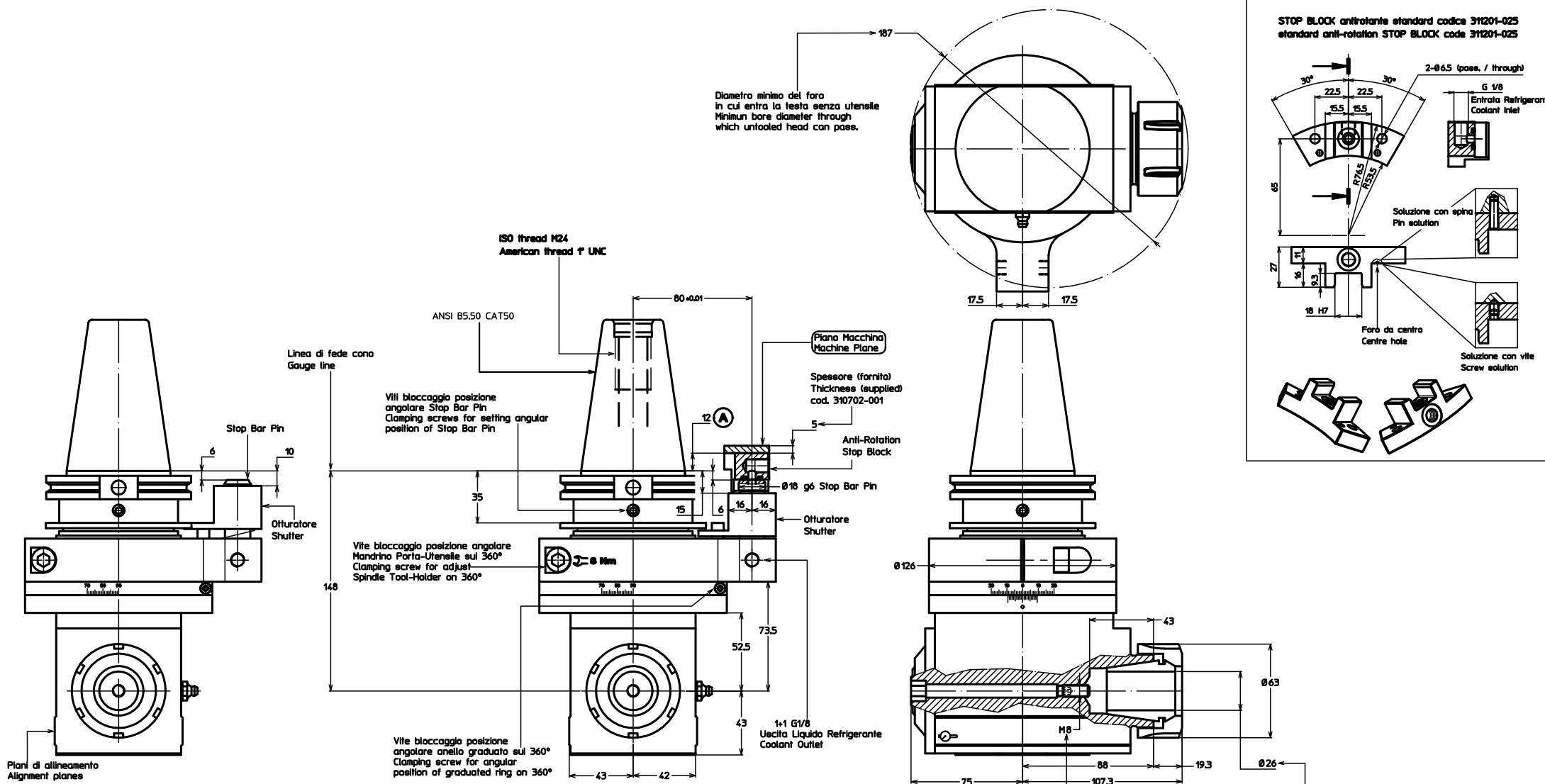
Vite per regolazione assiale utensile  
Setting screw for tool axial adjustment

Capacità max di bloccaggio Utensile  
Max Clamping Capacity

**TESTA ANGOLARE A 90° tipo A40CN-BT50**  
**90° ANGLE HEAD type A40CN-BT50**

| SPECIFICHE TECNICHE / TECHNICAL FEATURES       |                       | ACCESSORI / ACCESSORIES (optional)   |            |
|--|-----------------------|--------------------------------------|------------|
| Modello / Type                                 | A40CN-BT50            | Pinza ER40 DIN 6499/B                | 411240.100 |
| Codice / Code                                  | 124984.100            | ER40 Collet DIN 6499/B               |            |
| Mandrini per pinza / Spindles for collet       | ER 40                 |                                      |            |
| Rotazione presa di forza / Main drive rotation | SX / LH               | Pinza di maschiatura ET-1-40         | 401240.200 |
| Rotazione mandrino / Spindle rotation          | DX / RH               | (con compensazione)                  |            |
| Rapporto di trasmissione / Transmission ratio  | 1:1                   | Tapping collet ET-1-40               |            |
| Velocità max / Max speed                       | 3500 rpm              | (with compensation)                  |            |
| Coppia / Torque                                | 49 Nm @ 1000 rpm      |                                      |            |
|  | 34 Nm @ 2000 rpm      | Pinza di maschiatura ER40 con quadro | 411240.200 |
|  | 23 Nm @ 3500 rpm      | Tapping collet ER40 with square      |            |
| Spinta Max. Mandrino / Spindle max. thrust     | 1350 N                |                                      |            |
| Peso / Weight                                  | 14.6 Kg               |                                      |            |
| Lubrificazione a grasso / Grease lubricated    | KLÜBER ISOFLEX NBU 15 |                                      |            |





**Fuori macchina**  
(caricata nel magazzino utensili)  
**Outside machine**  
(charged into tool magazine)

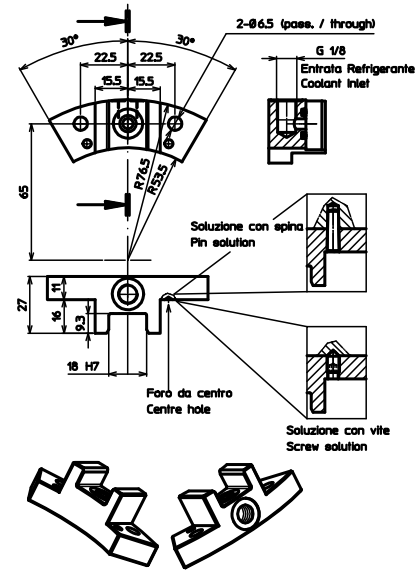
**Testa angolare libera (in macchina)**  
**Angle head free (inside machine)**

**TESTA ANGOLARE A 90° tipo A40CN-CAT50**  
**90° ANGLE HEAD type A40CN-CAT50**

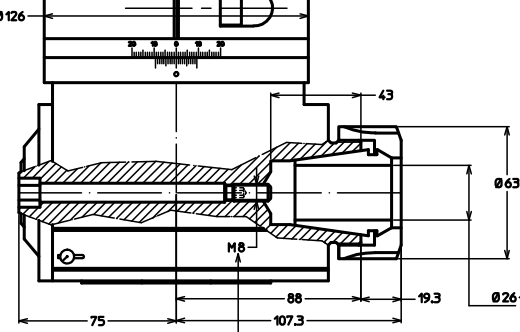
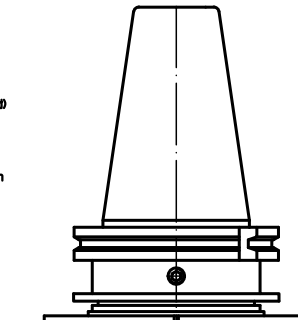
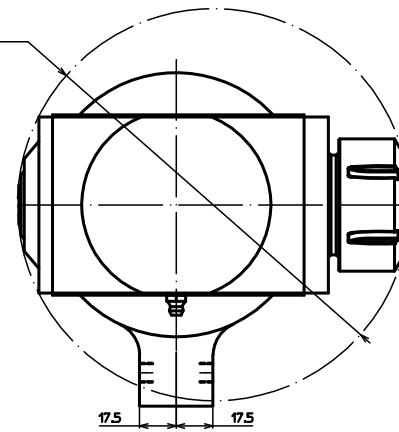
| SPECIFICHE TECNICHE / TECHNICAL FEATURES       |                       | ACCESSORI / ACCESSORIES (optional)   |            |
|--|-----------------------|--------------------------------------|------------|
| Modello / Type                                 | A40CN-CAT50           | Pinza ER40 DIN 6499/B                | 411240.100 |
| Codice / Code                                  | 124983.100            | ER40 Collet DIN 6499/B               |            |
| Mandrini per pinza / Spindles for collet       | ER 40                 |                                      |            |
| Rotazione presa di forza / Main drive rotation | SX / LH               | Pinza di maschiatura ET-1-40         | 401240.200 |
| Rotazione mandrino / Spindle rotation          | DX / RH               | (con compensazione)                  |            |
| Rapporto di trasmissione / Transmission ratio  | 1:1                   | Tapping collet ET-1-40               |            |
| Velocità max / Max speed                       | 3500 rpm              | (with compensation)                  |            |
| Coppia / Torque                                | 49 Nm @ 1000 rpm      |                                      |            |
|  | 34 Nm @ 2000 rpm      | Pinza di maschiatura ER40 con quadro | 411240.200 |
|  | 23 Nm @ 3500 rpm      | Tapping collet ER40 with square      |            |
| Spinta Max. Mandrino / Spindle max. thrust     | 1350 N                |                                      |            |
| Peso / Weight                                  | 14.6 Kg               |                                      |            |
| Lubrificazione a grasso / Grease lubricated    | KLÜBER ISOFLEX NBU 15 |                                      |            |



STOP BLOCK antirrotante standard codice 31201-025  
standard anti-rotation STOP BLOCK code 31201-025

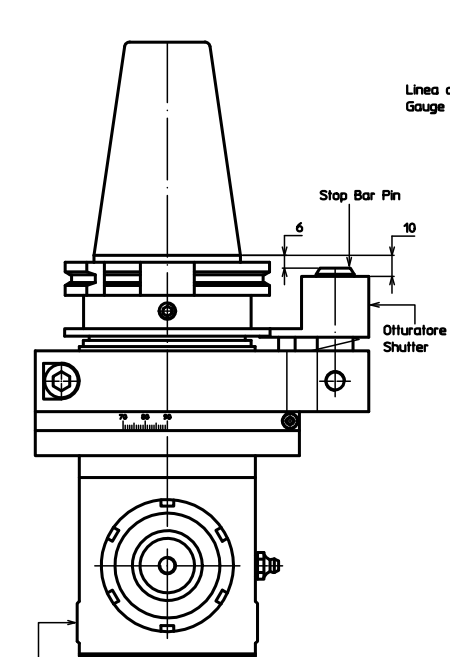


Diametro minimo del foro  
in cui entra la testa senza utensile  
Minimum bore diameter through  
which untooled head can pass.



Vite per regolazione assiale utensile  
Setting screw for tool axial adjustment

Capacità max di bloccaggio Utensile  
Max Clamping Capacity



Piani di allineamento  
Alignment planes

**Fuori macchina**  
(caricata nel magazzino utensili)  
**Outside machine**  
(charged into tool magazine)

Linea di fede cono  
Gauge line

Viti bloccaggio posizione  
angolare Stop Bar Pin  
Clamping screws for setting angular  
position of Stop Bar Pin

Vite bloccaggio posizione angolare  
Mandrino Porta-Utensile sui 360°  
Clamping screw for adjust-  
Spindle Tool-Holder on 360°

Vite bloccaggio posizione  
angolare anello graduato sui 360°  
Clamping screw for angular  
position of graduated ring on 360°

DIN69871-A 50

**Testa angolare libera (in macchina)**  
**Angle head free (inside machine)**

**TESTA ANGOLARE A 90° tipo A40CN-SK50**  
**90° ANGLE HEAD type A40CN-SK50**

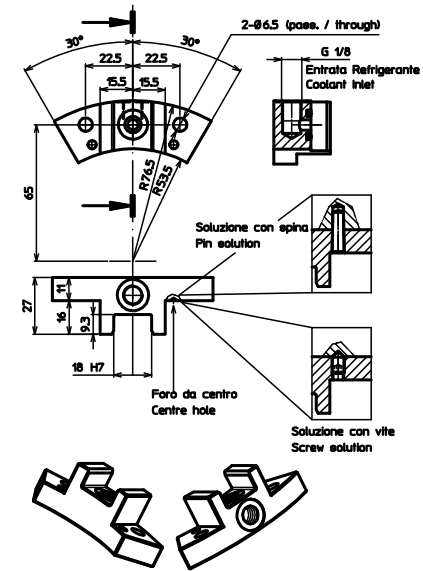
SPECIFICHE TECNICHE / TECHNICAL FEATURES

|  |  |
|--|--|
| Modello / Type                                 | A40CN-SK50   |
| Codice / Code                                  | 124982.100   |
| Mandrini per pinza / Spindles for collet       | ER 40  |
| Rotazione presa di forza / Main drive rotation | SX / LH  |
| Rotazione mandrino / Spindle rotation          | DX / RH  |
| Rapporto di trasmissione / Transmission ratio  | 1:1  |
| Velocità max / Max speed                       | 3500 rpm   |
| Coppia / Torque                                | 49 Nm @ 1000 rpm<br>34 Nm @ 2000 rpm<br>23 Nm @ 3500 rpm |
| Spinta Max. Mandrino / Spindle max. thrust     | 1350 N   |
| Peso / Weight                                  | 14.6 Kg  |
| Lubrificazione a grasso / Grease lubricated    | KLÜBER ISOFLEX NBU 15                                    |

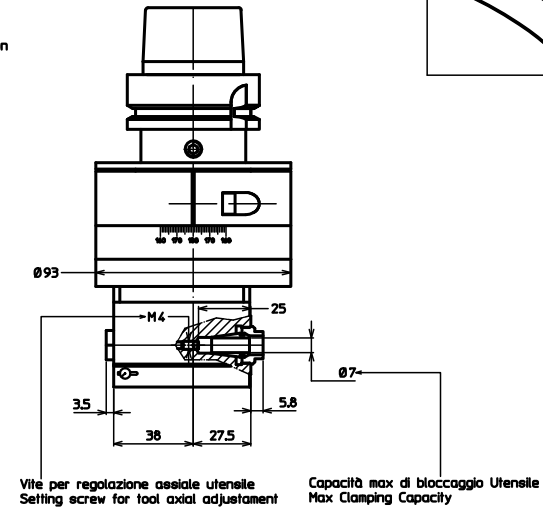
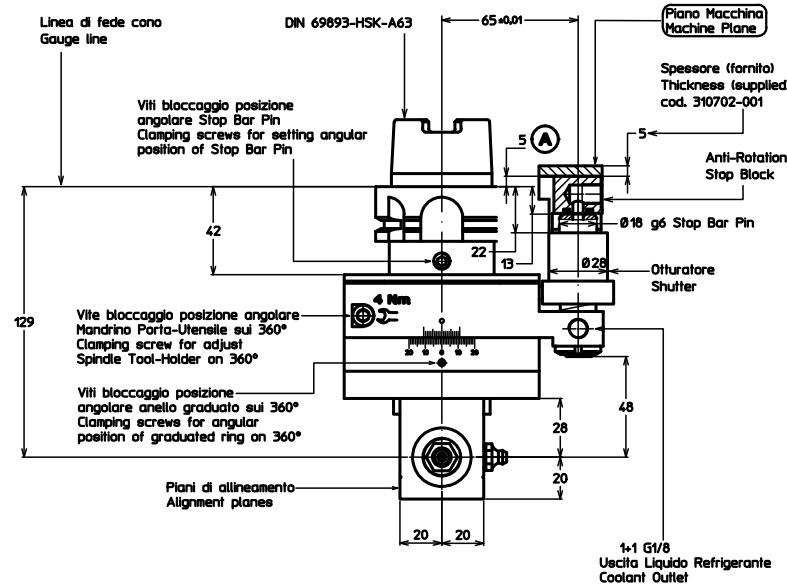
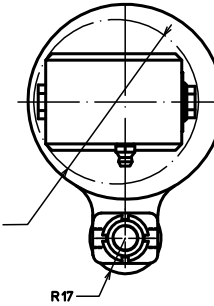
ACCESSORI / ACCESSORIES (optional)

|  |            |
|--|------------|
| Pinza ER40 DIN 6499/B  | 411240.100 |
| ER40 Collet DIN 6499/B   |            |
| Pinza di maschiatura ET-1-40<br>(con compensazione)<br>Tapping collet ET-1-40<br>(with compensation) | 401240.200 |
| Pinza di maschiatura ER40 con quadro<br>Tapping collet ER40 with square                              | 411240.200 |

STOP BLOCK antirrotante standard codice 31201-025  
standard anti-rotation STOP BLOCK code 31201-025



Diametro minimo del foro  
in cui entra la testa  
Minimum bore diameter through  
which untooled head can pass.



Fuori macchina  
(caricata nel magazzino utensili)  
Outside machine  
(charged into tool magazine)

Testa angolare libera (In macchina)  
Angle head free (inside machine)

### TESTA ANGOLARE A 90° tipo A11CN-HSK63 90° ANGLE HEAD type A11CN-HSK63

#### SPECIFICHE TECNICHE / TECHNICAL FEATURES

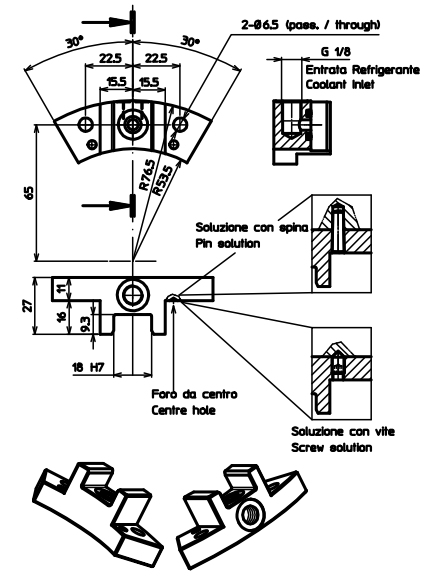
|  |  |
|--|--|
| Modello / Type                                 | A11CN-HSK63  |
| Codice / Code                                  | 124957.100   |
| Mandrini per pinza / Spindle for collet        | ER 11  |
| Rotazione presa di forza / Main drive rotation | SX / LH  |
| Rotazione mandrino / Spindle rotation          | DX / RH  |
| Rapporto di trasmissione / Transmission ratio  | 1:1  |
| Velocità max / Max speed                       | 8000 rpm   |
| Coppia / Torque                                | 6.6 Nm @ 2000 rpm<br>4.5 Nm @ 4000 rpm<br>3.5 Nm @ 6000 rpm<br>2.8 Nm @ 8000 rpm |
| Spinta Max. Mandrino / Spindle max. thrust     | 330 N  |
| Peso / Weight                                  | 3.5 Kg   |
| Lubrificazione a grasso / Grease lubricated    | KLÜBER ISOFLEX NBU 15  |

#### ACCESSORI / ACCESSORIES (optional)

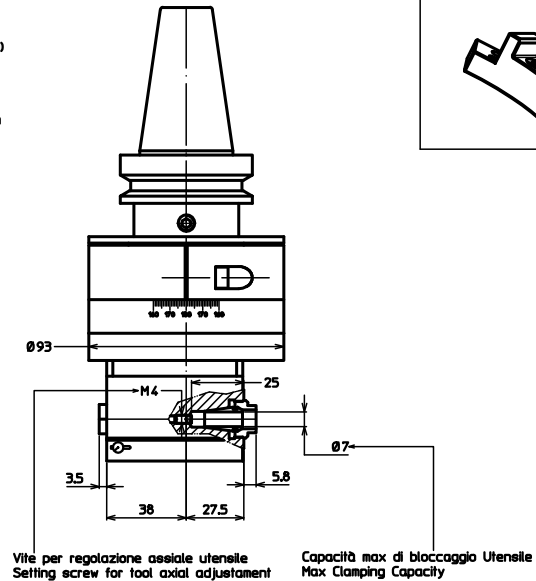
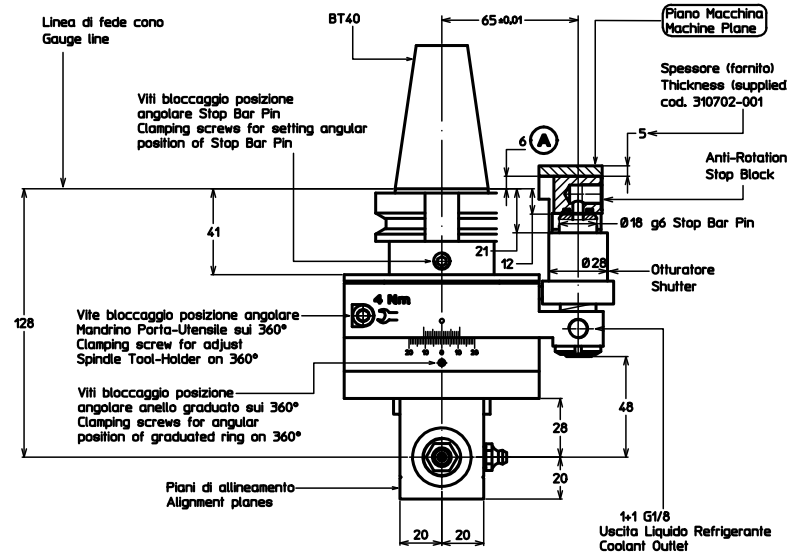
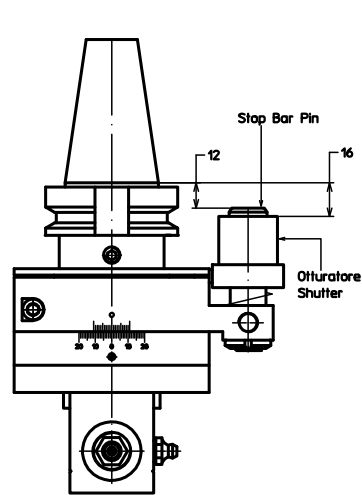
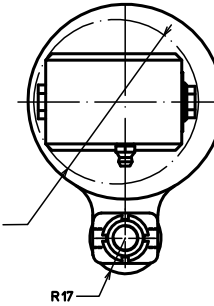
|                        |           |
|------------------------|-----------|
| Pinza ER11 DIN 6499/B  | 41211.100 |
| ER11 Collet DIN 6499/B |           |



STOP BLOCK antirrotante standard codice 31201-025  
standard anti-rotation STOP BLOCK code 31201-025



Diametro minimo del foro  
in cui entra la testa  
Minimum bore diameter through  
which untooled head can pass.



**Fuori macchina**  
**(caricata nel magazzino utensili)**  
**Outside machine**  
**(charged into tool magazine)**

**Testa angolare libera (In macchina)**  
**Angle head free (inside machine)**

### TESTA ANGOLARE A 90° tipo A11CN-BT40 90° ANGLE HEAD type A11CN-BT40

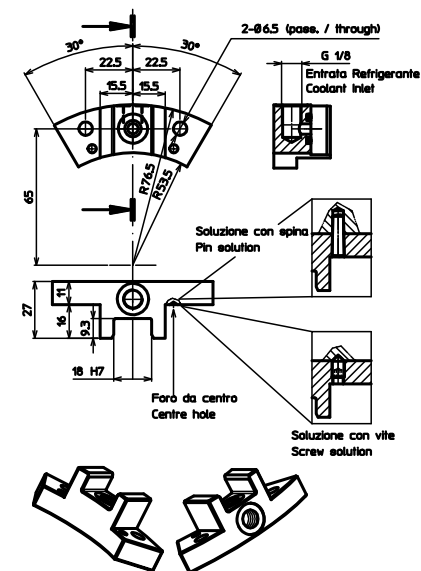
**SPECIFICHE TECNICHE / TECHNICAL FEATURES**

|  |  |
|--|--|
| Modello / Type                                 | A11CN-BT40   |
| Codice / Code                                  | 124956.100   |
| Mandrini per pinza / Spindle for collet        | ER 11  |
| Rotazione presa di forza / Main drive rotation | SX / LH  |
| Rotazione mandrino / Spindle rotation          | DX / RH  |
| Rapporto di trasmissione / Transmission ratio  | 1:1  |
| Velocità max / Max speed                       | 8000 rpm   |
| Coppia / Torque                                | 6.6 Nm @ 2000 rpm<br>4.5 Nm @ 4000 rpm<br>3.5 Nm @ 6000 rpm<br>2.8 Nm @ 8000 rpm |
| Spinta Max. Mandrino / Spindle max. thrust     | 330 N  |
| Peso / Weight                                  | 3.5 Kg   |
| Lubrificazione a grasso / Grease lubricated    | KLÜBER ISOFLEX NBU 15  |

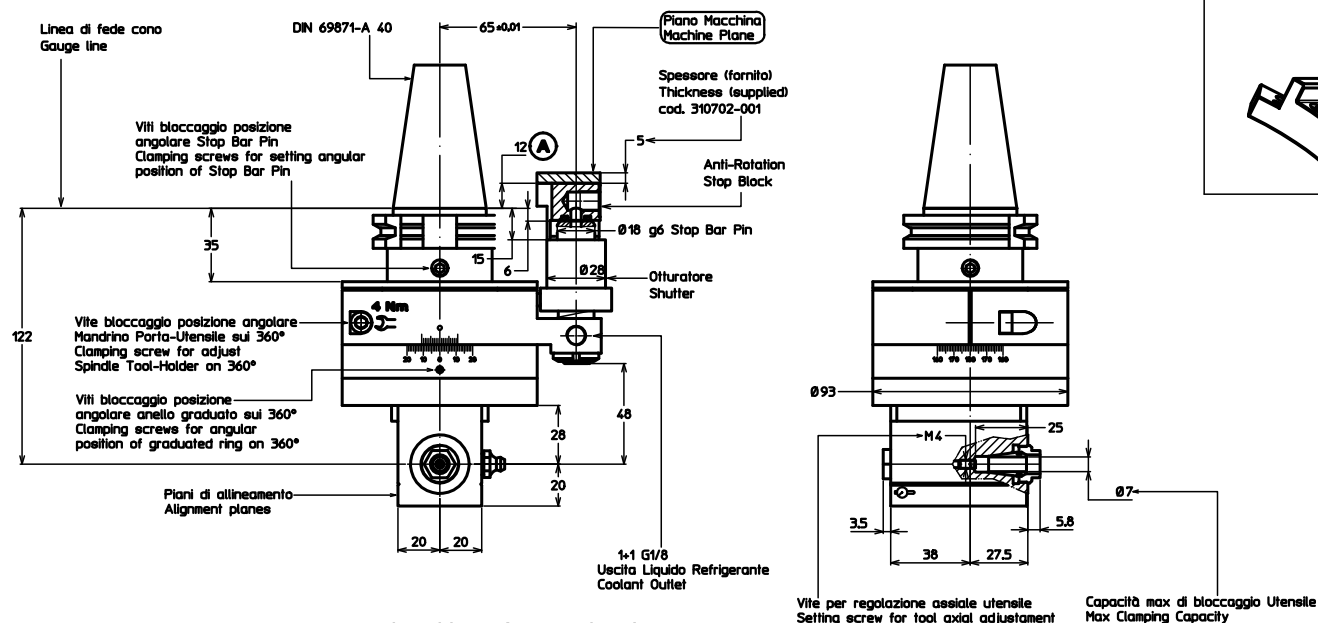
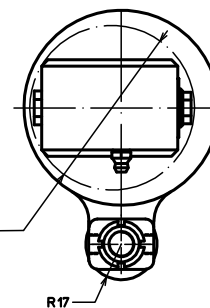
**ACCESSORI / ACCESSORIES (optional)**

|                        |           |
|------------------------|-----------|
| Pinza ER11 DIN 6499/B  | 41211.100 |
| ER11 Collet DIN 6499/B |           |

STOP BLOCK antirrotante standard codice 31201-025  
standard anti-rotation STOP BLOCK code 31201-025



Diametro minimo del foro  
in cui entra la testa  
Minimum bore diameter through  
which untooled head can pass.



**Fuori macchina  
(caricata nel magazzino utensili)  
Outside machine  
(charged into tool magazine)**

**Testa angolare libera (In macchina)  
Angle head free (inside machine)**

### TESTA ANGOLARE A 90° tipo A11CN-SK40 90° ANGLE HEAD type A11CN-SK40

**SPECIFICHE TECNICHE / TECHNICAL FEATURES**

Modello / Type A11CN-SK40  
Codice / Code 124955.100  
Mandrini per pinza / Spindle for collet ER 11  
Rotazione presa di forza / Main drive rotation SX / LH  
Rotazione mandrino / Spindle rotation DX / RH  
Rapporto di trasmissione / Transmission ratio 1:1  
Velocità max / Max speed 8000 rpm  
Coppia / Torque 6.6 Nm @ 2000 rpm  
4.5 Nm @ 4000 rpm  
3.5 Nm @ 6000 rpm  
2.8 Nm @ 8000 rpm

Spinta Max. Mandrino / Spindle max. thrust 330 N  
Peso / Weight 3.5 Kg  
Lubrificazione a grasso / Grease lubricated

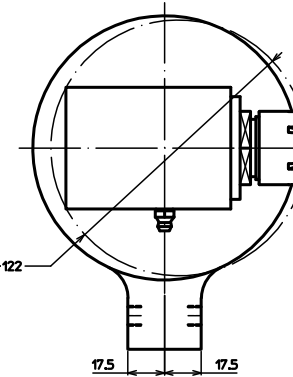
**ACCESSORI / ACCESSORIES (optional)**

Pinza ER11 DIN 6499/B 411211.100  
ER11 Collet DIN 6499/B

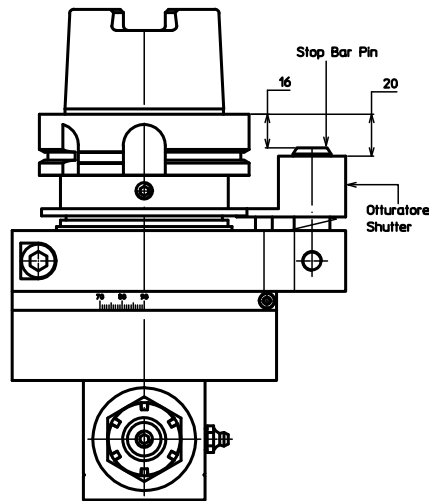
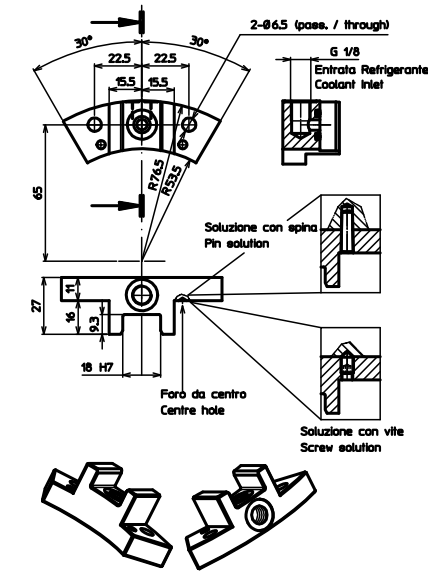
KLÜBER ISOFLEX NBU 15



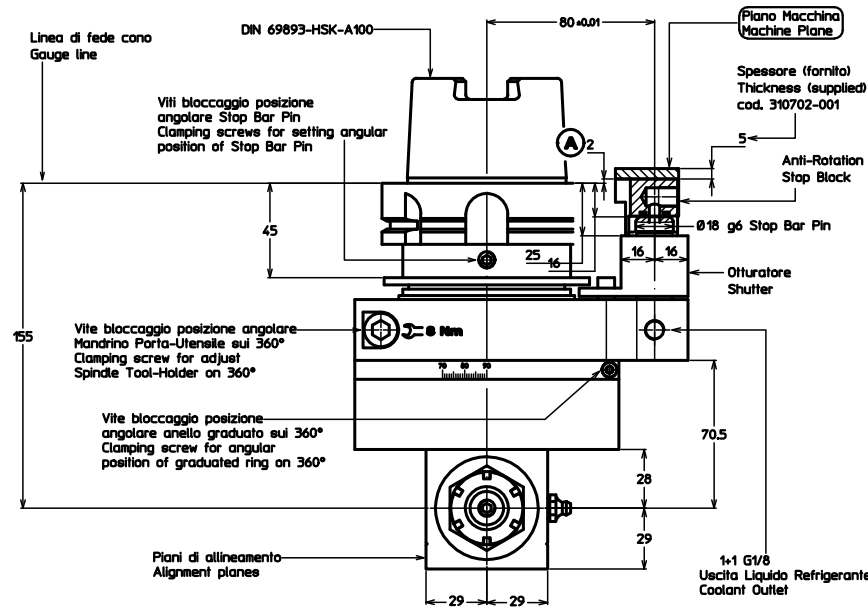
STOP BLOCK antirrotante standard codice 31201-025  
standard anti-rotation STOP BLOCK code 31201-025



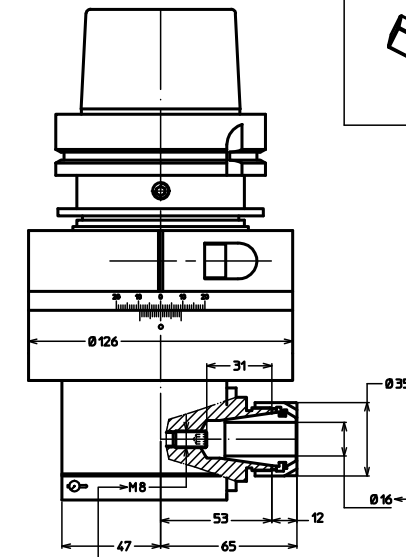
Diametro minimo del foro  
in cui entra la testa senza utensile  
Minimum bore diameter through  
which unthreaded head can pass.



**Fuori macchina**  
**(caricata nel magazzino utensili)**  
**Outside machine**  
**(charged into tool magazine)**



**Testa angolare libera (In macchina)**  
**Angle head free (Inside machine)**



Vite per regolazione assiale utensile  
Setting screw for tool axial adjustment

Capacità max di bloccaggio Utensile  
Max Clamping Capacity

### TESTA ANGOLARE A 90° tipo A25CN-HSK100 90° ANGLE HEAD type A25CN-HSK100

#### SPECIFICHE TECNICHE / TECHNICAL FEATURES

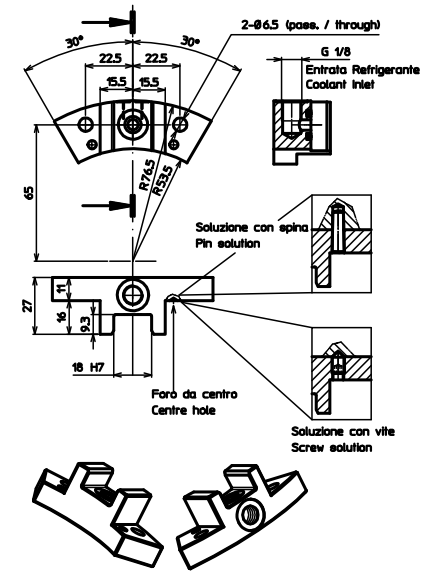
|  |  |
|--|--|
| Modello / Type                                 | A25CN-HSK100   |
| Codice / Code                                  | 124945.100   |
| Mandrini per pinza / Spindle for collet        | ER 25  |
| Rotazione presa di forza / Main drive rotation | SX / LH  |
| Rotazione mandrino / Spindle rotation          | DX / RH  |
| Rapporto di trasmissione / Transmission ratio  | 1:1  |
| Velocità max / Max speed                       | 5000 rpm   |
| Coppia / Torque                                | 18 Nm @ 1000 rpm<br>13.2 Nm @ 2000 rpm<br>8.6 Nm @ 4000 rpm<br>7.3 Nm @ 5000 rpm |
| Spinta Max. Mandrino / Spindle max. thrust     | 1000 N   |
| Peso / Weight                                  | 9.2 Kg   |
| Lubrificazione a grasso / Grease lubricated    | KLÜBER ISOFLEX NBU 15  |

#### ACCESSORI / ACCESSORIES (optional)

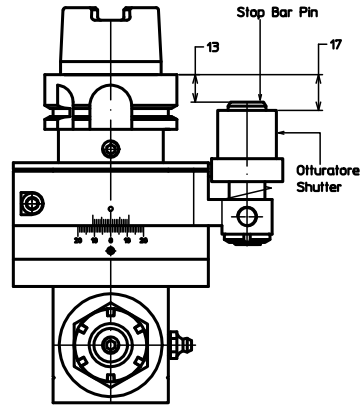
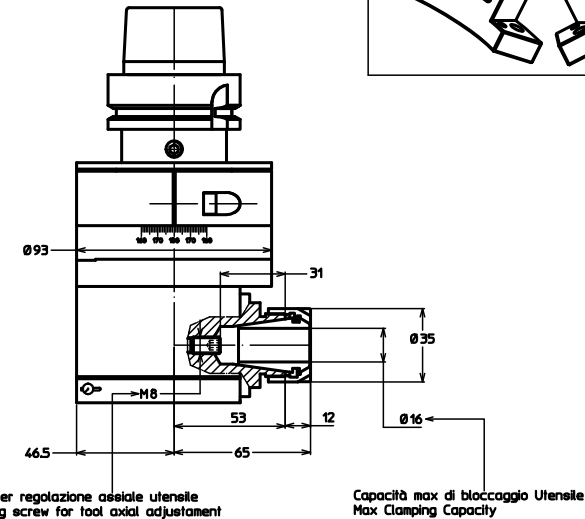
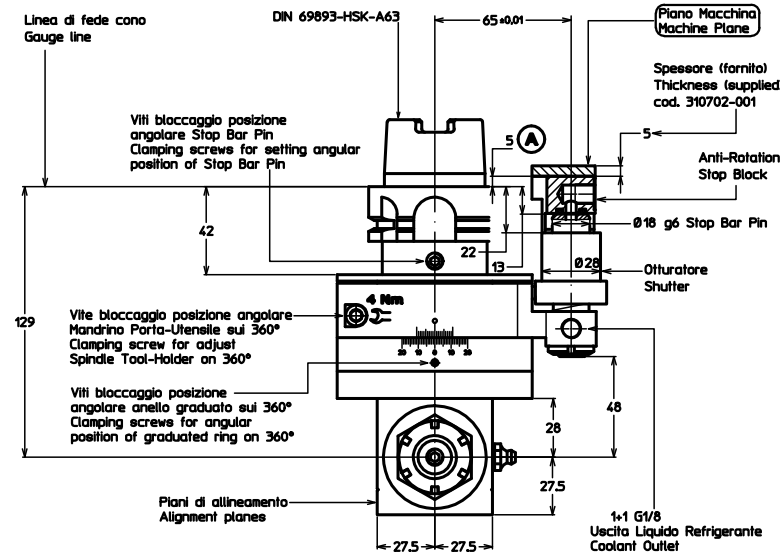
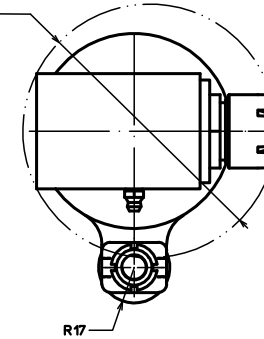
|   |            |
|---|------------|
| Pinza ER25 DIN 6499/B                               | 411225.100 |
| ER25 Collet DIN 6499/B                              |            |
| Pinza di maschiatura ET-1-25<br>(con compensazione) | 401225.200 |
| Tapping collet ET-1-25<br>(with compensation)       |            |
| Pinza di maschiatura ER25 con quadro                | 411225.200 |
| Tapping collet ER25 with square                     |            |



STOP BLOCK antirrotante standard codice 311201-025  
standard anti-rotation STOP BLOCK code 311201-025



Diametro minimo del foro  
in cui entra la testa senza utensile  
Minimum bore diameter through  
which unfooted head can pass.



Fuori macchina  
(caricata nel magazzino utensili)  
Outside machine  
(charged into tool magazine)

Testa angolare libera (In macchina)  
Angle head free (inside machine)

### TESTA ANGOLARE A 90° tipo A25CN-HSK63 90° ANGLE HEAD type A25CN-HSK63

#### SPECIFICHE TECNICHE / TECHNICAL FEATURES

|  |  |
|--|--|
| Modello / Type                                 | A25CN-HSK63  |
| Codice / Code                                  | 124944.100   |
| Mandrini per pinza / Spindle for collet        | ER 25  |
| Rotazione presa di forza / Main drive rotation | SX / LH  |
| Rotazione mandrino / Spindle rotation          | DX / RH  |
| Rapporto di trasmissione / Transmission ratio  | 1:1  |
| Velocità max / Max speed                       | 5000 rpm   |
| Coppia / Torque                                | 18 Nm @ 1000 rpm<br>13.2 Nm @ 2000 rpm<br>8.6 Nm @ 4000 rpm<br>7.3 Nm @ 5000 rpm |
| Spinta Max. Mandrino / Spindle max. thrust     | 450 N  |
| Peso / Weight                                  | 4.5 Kg   |
| Lubrificazione a grasso / Grease lubricated    | KLÜBER ISOFLEX NBU 15  |

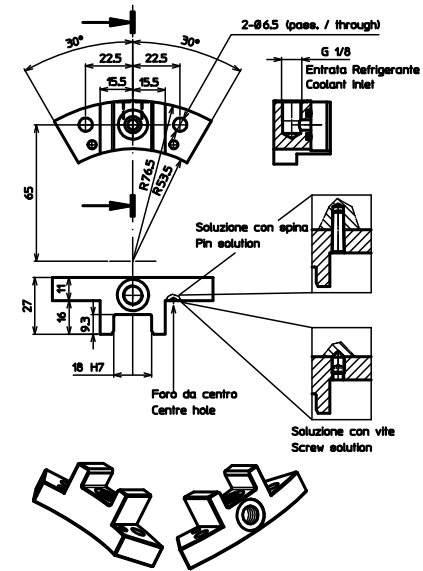
#### ACCESSORI / ACCESSORIES (optional)

|   |            |
|---|------------|
| Pinza ER25 DIN 6499/B                               | 411225.100 |
| ER25 Collet DIN 6499/B                              |            |
| Pinza di maschiatura ET-1-25<br>(con compensazione) | 401225.200 |
| Tapping collet ET-1-25<br>(with compensation)       |            |
| Pinza di maschiatura ER25 con quadro                | 411225.200 |
| Tapping collet ER25 with square                     |            |

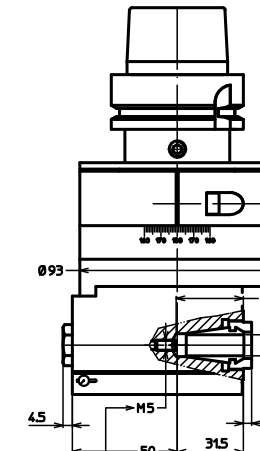
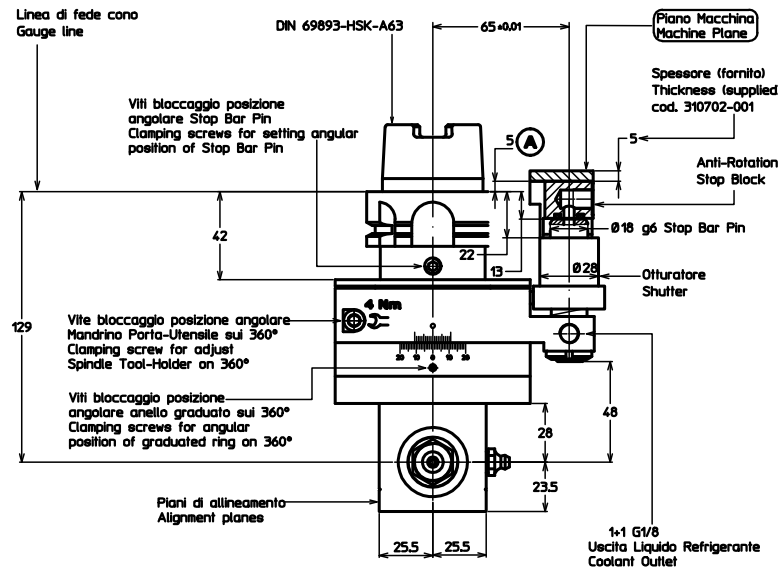
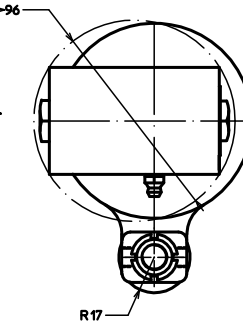




STOP BLOCK antirrotante standard codice 311201-025  
standard anti-rotation STOP BLOCK code 311201-025

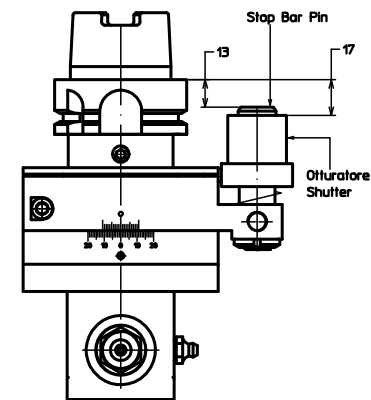


Diametro minimo del foro  
in cui entra la testa  
Minimum bore diameter through  
which unfooted head can pass.



Vite per regolazione assiale utensile  
Setting screw for tool axial adjustment

Capacità max di bloccaggio Utensile  
Max Clamping Capacity



**Fuori macchina**  
**(caricata nel magazzino utensili)**  
**Outside machine**  
**(charged into tool magazine)**

**Testa angolare libera (In macchina)**  
**Angle head free (inside machine)**

### TESTA ANGOLARE A 90° tipo A16CN-HSK63 90° ANGLE HEAD type A16CN-HSR63

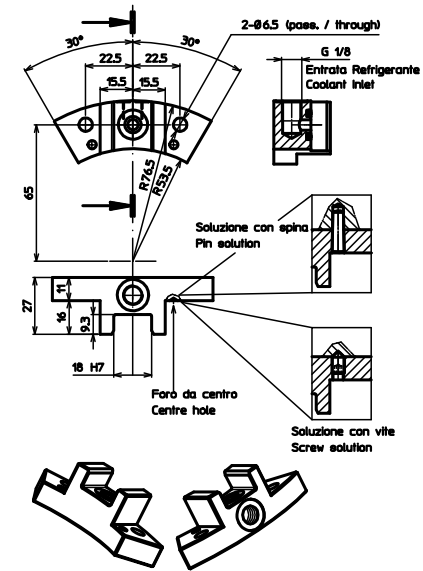
#### SPECIFICHE TECNICHE / TECHNICAL FEATURES

|  |  |
|--|--|
| Modello / Type                                 | A16CN-HSK63  |
| Codice / Code                                  | 124943.100   |
| Mandrini per pinza / Spindle for collet        | ER 16  |
| Rotazione presa di forza / Main drive rotation | SX / LH  |
| Rotazione mandrino / Spindle rotation          | DX / RH  |
| Rapporto di trasmissione / Transmission ratio  | 1:1  |
| Velocità max / Max speed                       | 7000 rpm   |
| Coppia / Torque                                | 18 Nm @ 1000 rpm<br>13.2 Nm @ 2000 rpm<br>8.6 Nm @ 4000 rpm<br>5.6 Nm @ 7000 rpm |
| Spinta Max. Mandrino / Spindle max. thrust     | 450 N  |
| Peso / Weight                                  | 4 Kg   |
| Lubrificazione a grasso / Grease lubricated    | KLÜBER ISOFLEX NBU 15  |

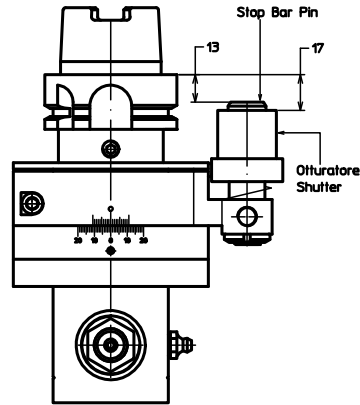
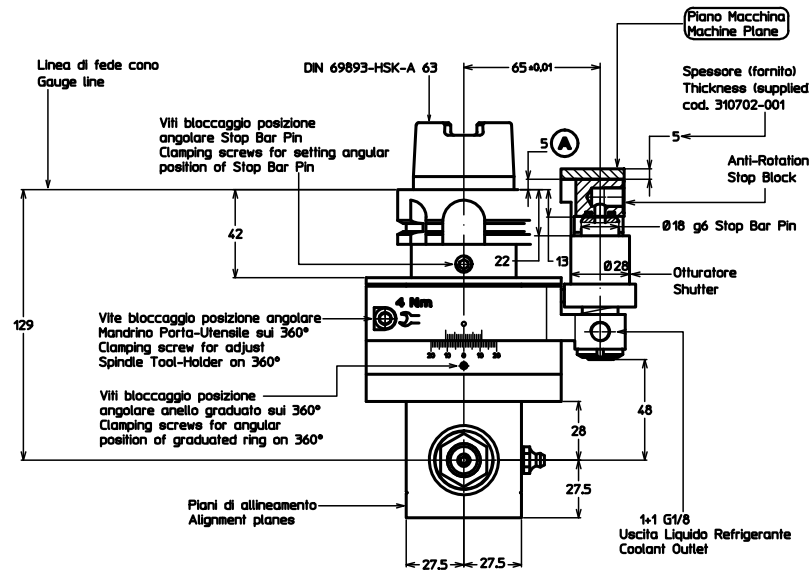
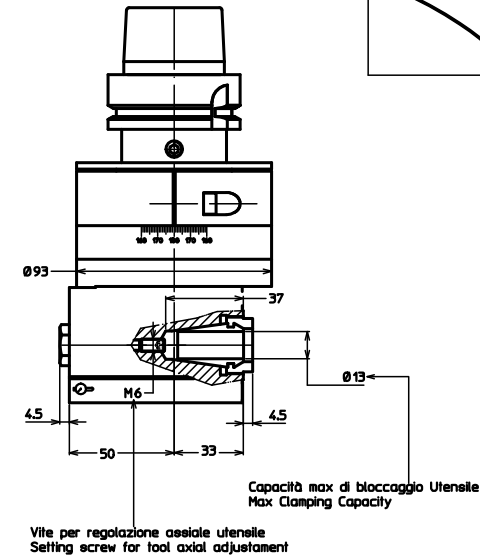
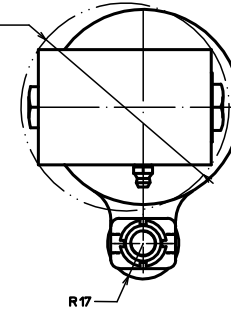
#### ACCESSORI / ACCESSORIES (optional)

|   |            |
|---|------------|
| Pinza ER16 DIN 6499/B                               | 411216.100 |
| ER16 Collet DIN 6499/B                              |            |
| Pinza di maschiatura ET-1-16<br>(con compensazione) | 401216.200 |
| Tapping collet ET-1-16<br>(with compensation)       |            |
| Pinza di maschiatura ER16 con quadro                | 411216.200 |
| Tapping collet ER16 with square                     |            |

STOP BLOCK antirrotante standard codice 31201-025  
standard anti-rotation STOP BLOCK code 31201-025



Diametro minimo del foro  
in cui entra la testa senza utensile  
Minimum bore diameter through  
which untooled head can pass.



Fuori macchina  
(caricata nel magazzino utensili)  
Outside machine  
(charged into tool magazine)

Testa angolare libera (In macchina)  
Angle head free (inside machine)

### TESTA ANGOLARE A 90° tipo A20CN-HSK63 90° ANGLE HEAD type A20CN-HSK63

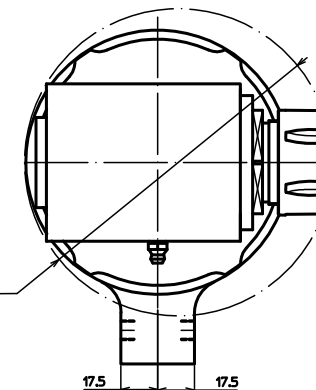
#### SPECIFICHE TECNICHE / TECHNICAL FEATURES

Modello / Type A20CN-HSK63  
Codice / Code 124939.100  
Mandrini per pinza / Spindle for collet ER 20  
Rotazione presa di forza / Main drive rotation SX / LH  
Rotazione mandrino / Spindle rotation DX / RH  
Rapporto di trasmissione / Transmission ratio 1:1  
Velocità max / Max speed 6000 rpm  
Coppia / Torque 18 Nm @ 1000 rpm  
13.2 Nm @ 2000 rpm  
8.6 Nm @ 4000 rpm  
6.4 Nm @ 6000 rpm

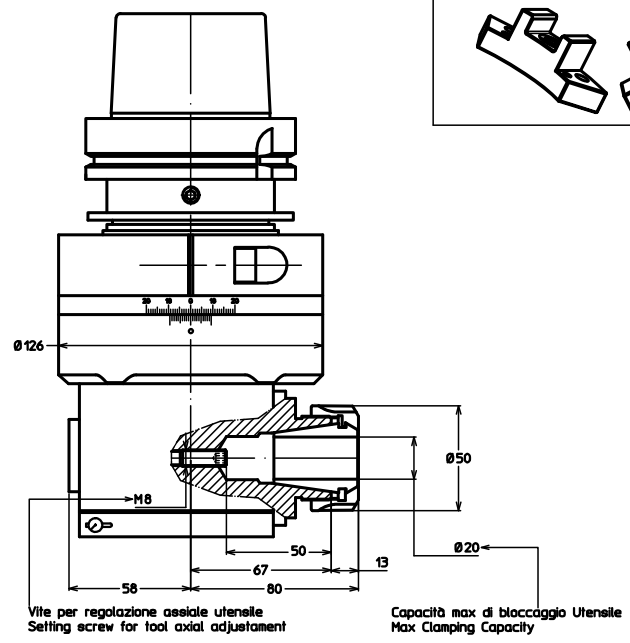
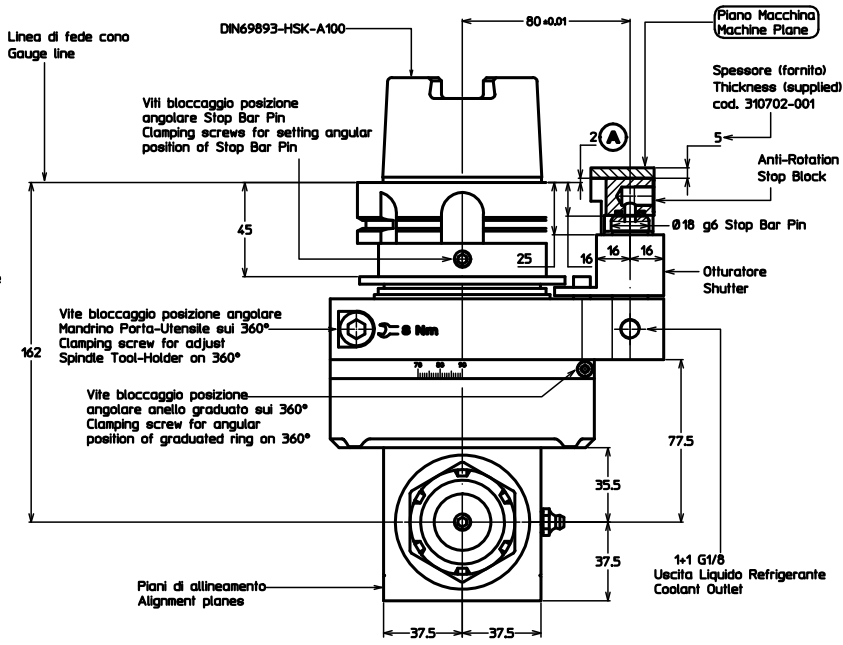
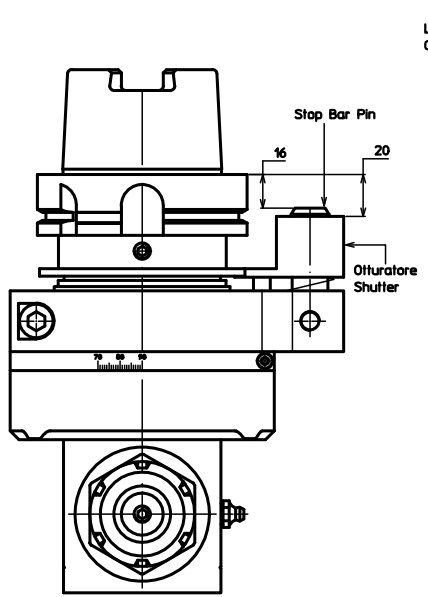
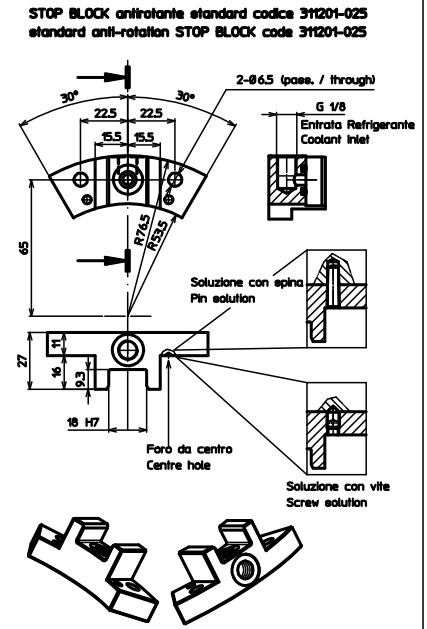
Spinta Max. Mandrino / Spindle max. thrust 450 N  
Peso / Weight 4.1 Kg  
Lubrificazione a grasso / Grease lubricated KLÜBER ISOFLEX NBU 15

#### ACCESSORI / ACCESSORIES (optional)

Pinza ER20 DIN 6499/B 411220.100  
ER20 Collet DIN 6499/B  
Pinza di maschiatura ET-1-20 401220.200  
(con compensazione)  
Tapping collet ET-1-20  
(with compensation)  
Pinza di maschiatura ER20 con quadro 411220.200  
Tapping collet ER20 with square



Diametro minimo del foro  
in cui entra la testa senza utensile  
Minimum bore diameter through  
which untoolted head can pass.



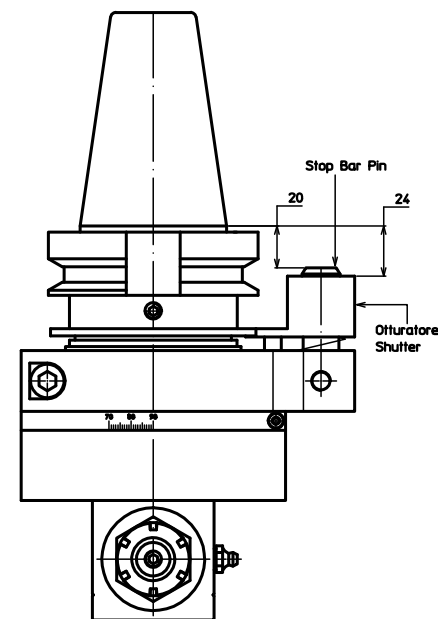
**Fuori macchina**  
**(caricata nel magazzino utensili)**  
**Outside machine**  
**(charged into tool magazine)**

**Testa angolare libera (in macchina)**  
**Angle head free (inside machine)**

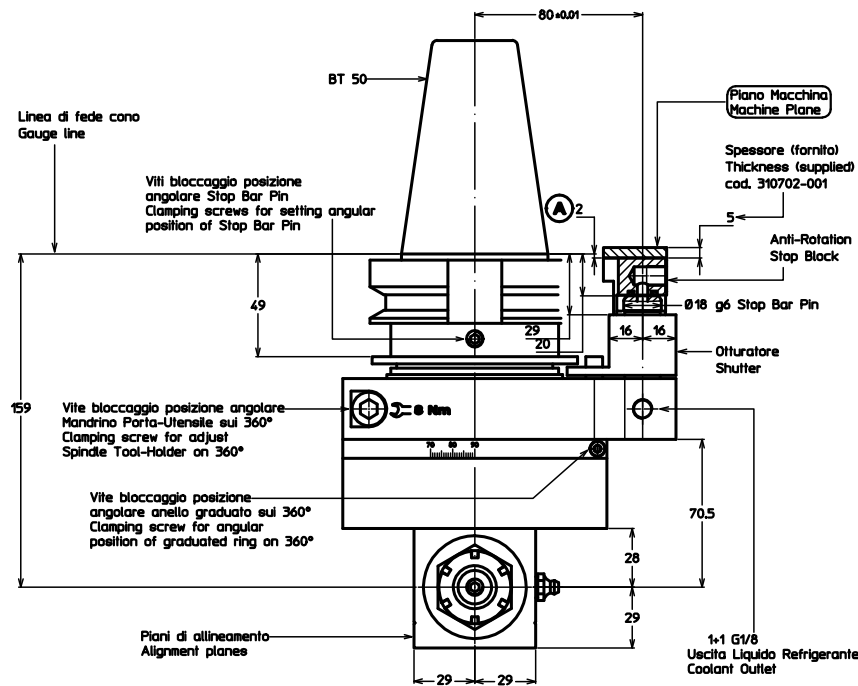
**TESTA ANGOLARE A 90° tipo A32CN-HSK100**  
**90° ANGLE HEAD type A32CN-HSK100**

| SPECIFICHE TECNICHE / TECHNICAL FEATURES       |                       | ACCESSORI / ACCESSORIES (optional)   |            |
|--|-----------------------|--------------------------------------|------------|
| Modello / Type                                 | A32CN-HSK100          | Pinza ER32 DIN 6499/B                | 411232.100 |
| Codice / Code                                  | 124938.100            | ER32 Collet DIN 6499/B               |            |
| Mandrini per pinza / Spindles for collet       | ER 32                 |                                      |            |
| Rotazione presa di forza / Main drive rotation | SX / LH               | Pinza di maschiatura ET-1-32         | 401232.200 |
| Rotazione mandrino / Spindle rotation          | DX / RH               | (con compensazione)                  |            |
| Rapporto di trasmissione / Transmission ratio  | 1:1                   | Tapping collet ET-1-32               |            |
| Velocità max / Max speed                       | 4000 rpm              | (with compensation)                  |            |
| Coppia / Torque                                | 33.8 Nm @ 1000 rpm    |                                      |            |
|  | 26 Nm @ 2000 rpm      | Pinza di maschiatura ER32 con quadro | 411232.200 |
|  | 14.7 Nm @ 3000 rpm    | Tapping collet ER32 with square      |            |
| Spinta Max. Mandrino / Spindle max. thrust     | 1200 N                |                                      |            |
| Peso / Weight                                  | 11.2 Kg               |                                      |            |
| Lubrificazione a grasso / Grease lubricated    | KLÜBER ISOFLEX NBU 15 |                                      |            |

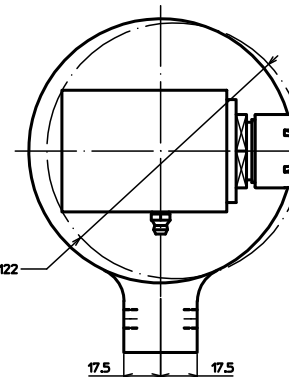




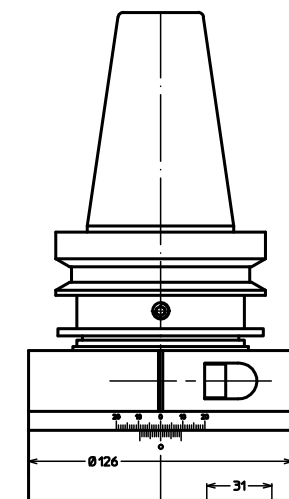
**Fuori macchina  
(caricata nel magazzino utensili)  
Outside machine  
(charged into tool magazine)**



**Testa angolare libera (In macchina)  
Angle head free (Inside machine)**



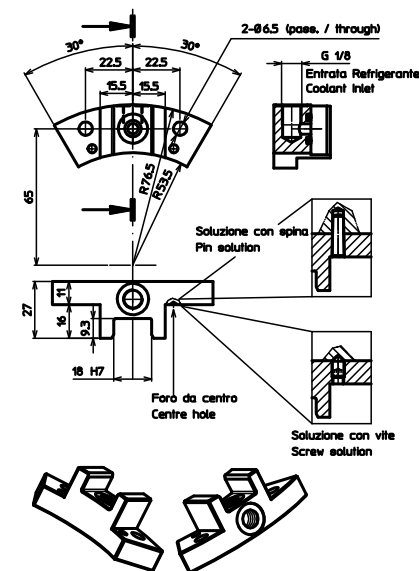
Diametro minimo del foro  
in cui entra la testa senza utensile  
Minimum bore diameter through  
which untooled head can pass.



Vite per regolazione assiale utensile  
Setting screw for tool axial adjustment

Capacità max di bloccaggio Utensile  
Max Clamping Capacity

**STOP BLOCK antirrotante standard codice 31201-025  
standard anti-rotation STOP BLOCK code 31201-025**



**TESTA ANGOLARE A 90° tipo A25CN-BT50  
90° ANGLE HEAD type A25CN-BT50**

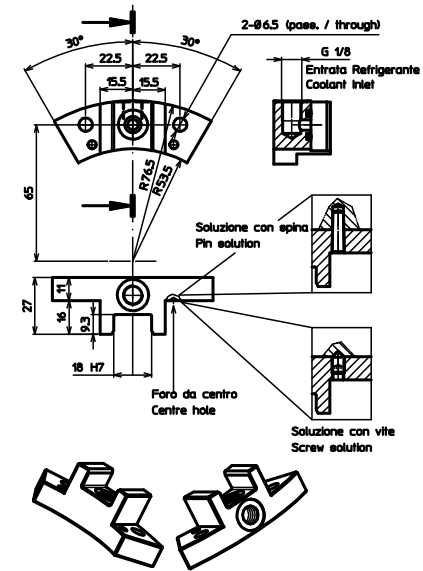
**SPECIFICHE TECNICHE / TECHNICAL FEATURES**

|  |  |
|--|--|
| Modello / Type                                 | A25CN-BT50   |
| Codice / Code                                  | 124934.100   |
| Mandrini per pinza / Spindle for collet        | ER 25  |
| Rotazione presa di forza / Main drive rotation | SX / LH  |
| Rotazione mandrino / Spindle rotation          | DX / RH  |
| Rapporto di trasmissione / Transmission ratio  | 1:1  |
| Velocità max / Max speed                       | 5000 rpm   |
| Coppia / Torque                                | 18 Nm @ 1000 rpm<br>13.2 Nm @ 2000 rpm<br>8.6 Nm @ 4000 rpm<br>7.3 Nm @ 5000 rpm |
| Spinta Max. Mandrino / Spindle max. thrust     | 1000 N   |
| Peso / Weight                                  | 9.2 Kg   |
| Lubrificazione a grasso / Grease lubricated    | KLÜBER ISOFLEX NBU 15  |

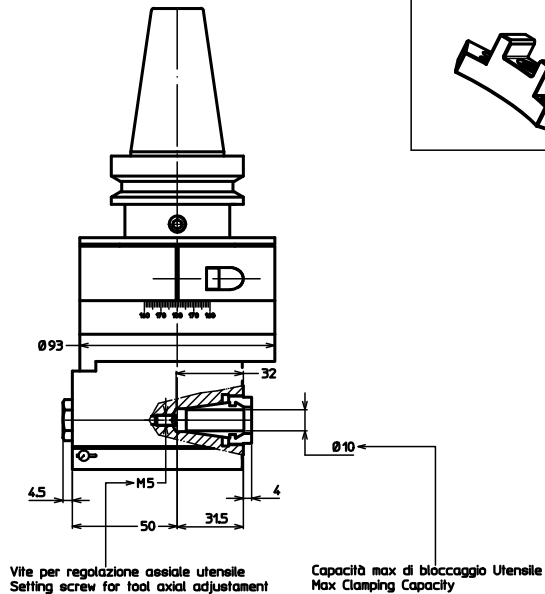
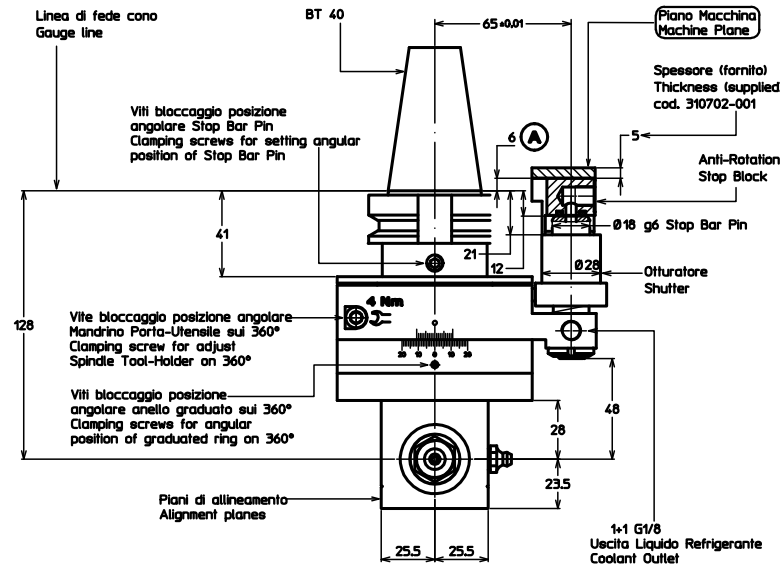
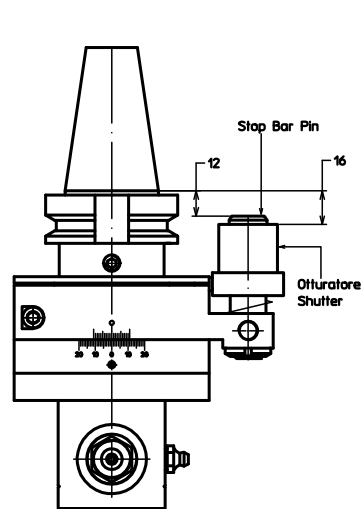
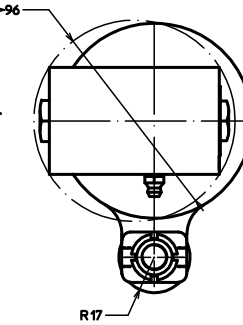
**ACCESSORI / ACCESSORIES (optional)**

|   |            |
|---|------------|
| Pinza ER25 DIN 6499/B                               | 411225.100 |
| ER25 Collet DIN 6499/B                              |            |
| Pinza di maschiatura ET-1-25<br>(con compensazione) | 401225.200 |
| Tapping collet ET-1-25<br>(with compensation)       |            |
| Pinza di maschiatura ER25 con quadro                | 411225.200 |
| Tapping collet ER25 with square                     |            |

STOP BLOCK antirrotante standard codice 311201-025  
standard anti-rotation STOP BLOCK code 311201-025



Diametro minimo del foro  
in cui entra la testa  
Minimum bore diameter through  
which unfooted head can pass.



**Fuori macchina**  
**(caricata nel magazzino utensili)**  
**Outside machine**  
**(charged into tool magazine)**

**Testa angolare libera (In macchina)**  
**Angle head free (inside machine)**

### TESTA ANGOLARE A 90° tipo A16CN-BT40 90° ANGLE HEAD type A16CN-BT40

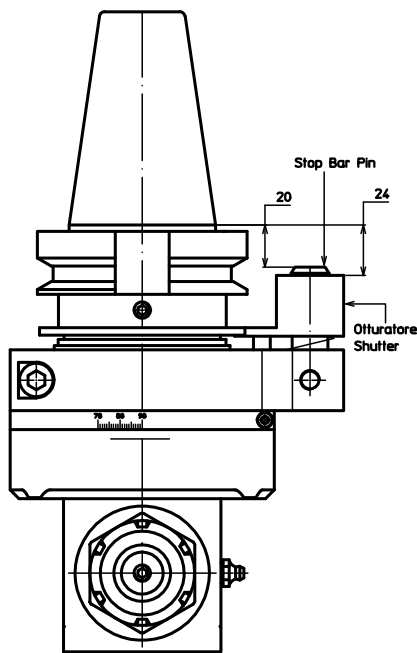
**SPECIFICHE TECNICHE / TECHNICAL FEATURES**

Modello / Type A16CN-BT40  
Codice / Code 124933.100  
Mandrini per pinza / Spindle for collet ER 16  
Rotazione presa di forza / Main drive rotation SX / LH  
Rotazione mandrino / Spindle rotation DX / RH  
Rapporto di trasmissione / Transmission ratio 1:1  
Velocità max / Max speed 7000 rpm  
Coppia / Torque 18 Nm @ 1000 rpm  
13.2 Nm @ 2000 rpm  
8.6 Nm @ 4000 rpm  
5.6 Nm @ 7000 rpm

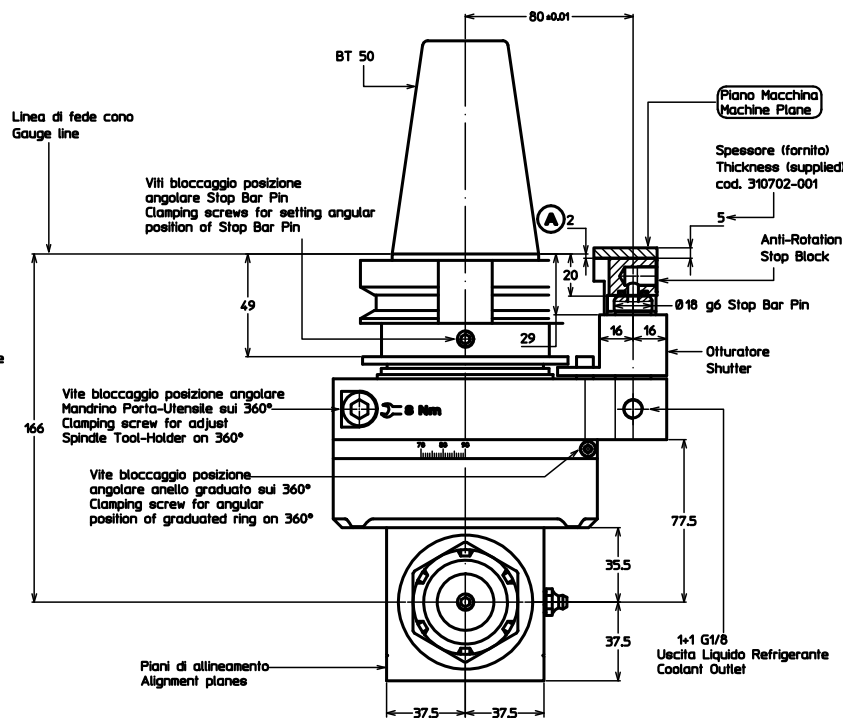
Spinta Max. Mandrino / Spindle max. thrust 450 N  
Peso / Weight 4 Kg  
Lubrificazione a grasso / Grease lubricated

**ACCESSORI / ACCESSORIES (optional)**

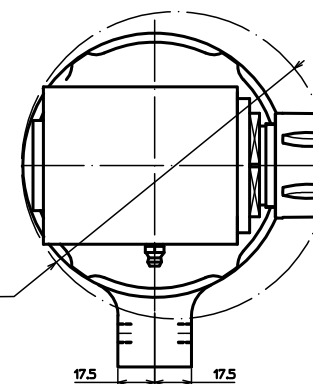
Pinza ER16 DIN 6499/B 411216.100  
ER16 Collet DIN 6499/B  
Pinza di maschiatura ET-1-16 401216.200  
(con compensazione)  
Tapping collet ET-1-16  
(with compensation)  
Pinza di maschiatura ER16 con quadro 411216.200  
Tapping collet ER16 with square



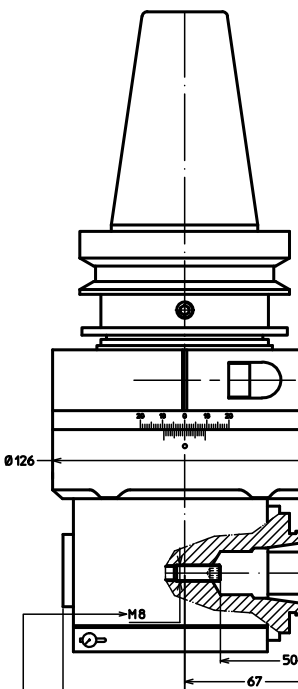
**Fuori macchina**  
(caricata nel magazzino utensili)  
**Outside machine**  
(charged into tool magazine)



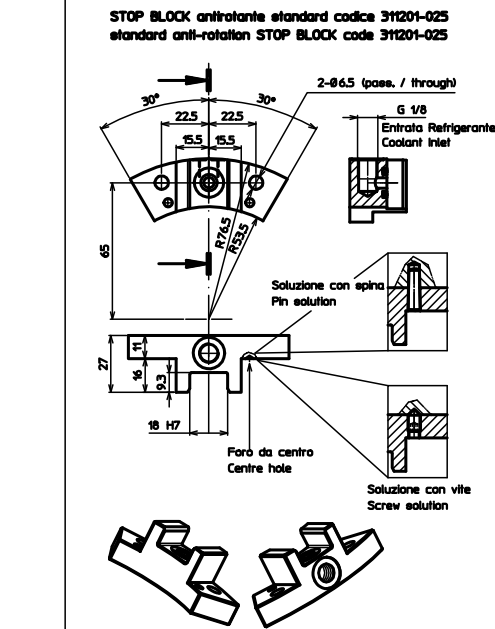
**Testa angolare libera (in macchina)**  
**Angle head free (inside machine)**



Diametro minimo del foro  
in cui entra la testa senza utensile  
Minimum bore diameter through  
which untool head can pass.



Vite per regolazione assiale utensile  
Setting screw for tool axial adjustment



**STOP BLOCK** antirrotante standard codice 31201-025  
standard anti-rotation **STOP BLOCK** code 31201-025

2-Ø6.5 (pass. / through)  
G 1/8  
Entrata Refrigerante  
Coolant Inlet

Soluzione con aprina  
Pin solution

Foro da centro  
Centre hole  
Soluzione con vite  
Screw solution

Capacità max di bloccaggio Utensile  
Max Clamping Capacity

**TESTA ANGOLARE A 90° tipo A32CN-BT50**  
**90° ANGLE HEAD type A32CN-BT50**

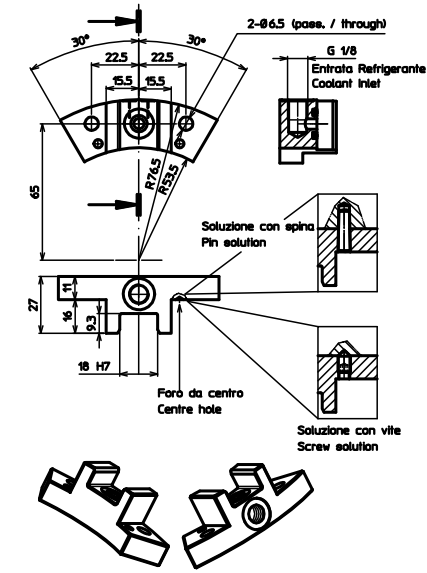
**SPECIFICHE TECNICHE / TECHNICAL FEATURES**

|  |  |
|--|--|
| Modello / Type                                 | A32CN-BT50   |
| Codice / Code                                  | 124932.100   |
| Mandri per pinza / Spindle for collet          | ER 32  |
| Rotazione presa di forza / Main drive rotation | SX / LH  |
| Rotazione mandrino / Spindle rotation          | DX / RH  |
| Rapporto di trasmissione / Transmission ratio  | 1:1  |
| Velocità max / Max speed                       | 4000 rpm   |
| Coppia / Torque                                | 33.8 Nm @ 1000 rpm<br>26 Nm @ 2000 rpm<br>14.7 Nm @ 4000 rpm |
| Spinta Max. Mandrino / Spindle max. thrust     | 1200 N   |
| Peso / Weight                                  | 11.2 Kg  |
| Lubrificazione a grasso / Grease lubricated    | KLÜBER ISOFLEX NBU 15  |

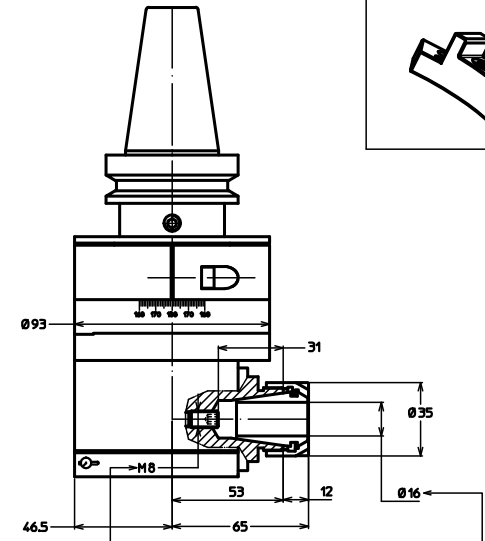
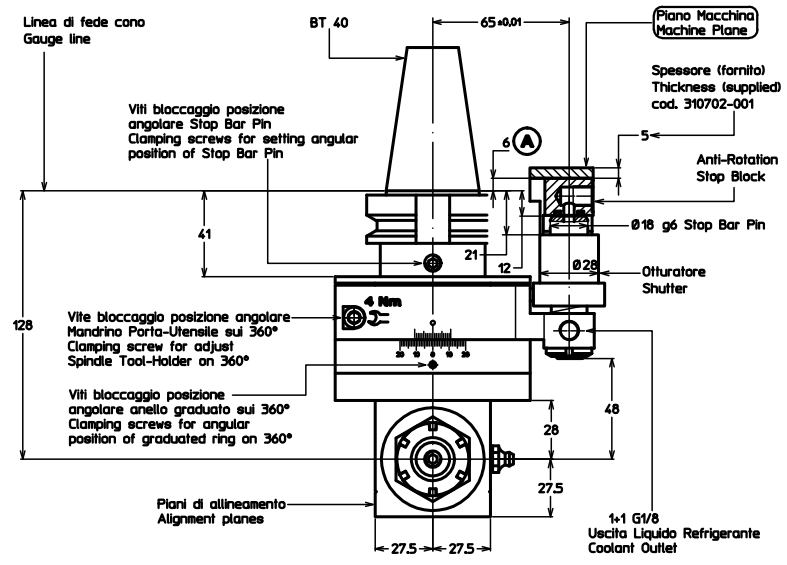
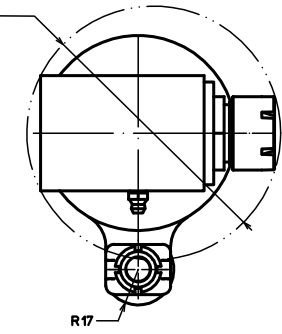
**ACCESSORI / ACCESSORIES (optional)**

|  |            |
|--|------------|
| Pinza ER32 DIN 6499/B                            | 411232.100 |
| ER32 Collet DIN 6499/B                           |            |
| Pinza di maschiatura ET-1-32 (con compensazione) | 401232.200 |
| Tapping collet ET-1-32 (with compensation)       |            |
| Pinza di maschiatura ER32 con quadro             | 411232.200 |
| Tapping collet ER32 with square                  |            |

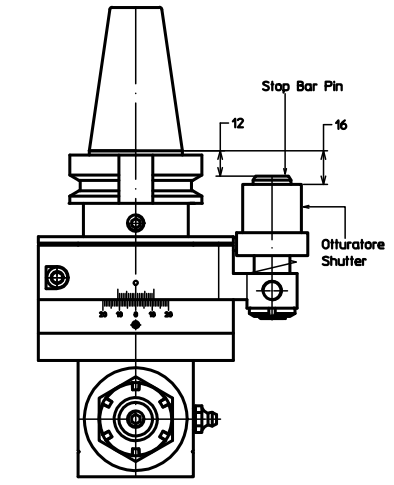
STOP BLOCK antirrotante standard codice 311201-025  
standard anti-rotation STOP BLOCK code 311201-025



Diametro minimo del foro  
in cui entra la testa senza utensile  
Minimum bore diameter through  
which unfooted head can pass.



Capacità max di bloccaggio Utensile  
Max Clamping Capacity



Fuori macchina  
(caricata nel magazzino utensili)  
Outside machine  
(charged into tool magazine)

Testa angolare libera (In macchina)  
Angle head free (inside machine)

### TESTA ANGOLARE A 90° tipo A25CN-BT40 90° ANGLE HEAD type A25CN-BT40

SPECIFICHE TECNICHE / TECHNICAL FEATURES

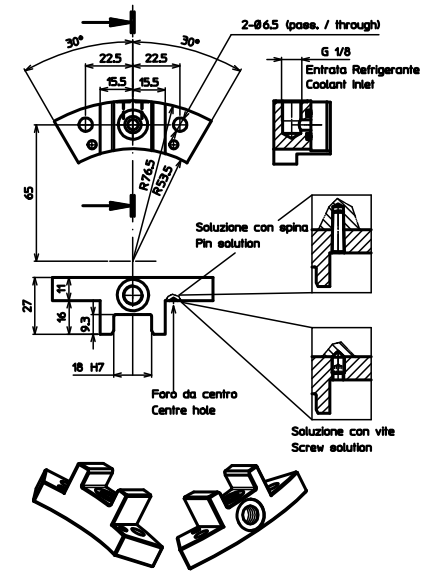
|  |  |
|--|--|
| Modello / Type                                 | A25CN-BT40   |
| Codice / Code                                  | 124931,100   |
| Mandrini per pinza / Spindle for collet        | ER 25  |
| Rotazione presa di forza / Main drive rotation | SX / LH  |
| Rotazione mandrino / Spindle rotation          | DX / RH  |
| Rapporto di trasmissione / Transmission ratio  | 1:1  |
| Velocità max / Max speed                       | 5000 rpm   |
| Coppia / Torque                                | 18 Nm @ 1000 rpm<br>13.2 Nm @ 2000 rpm<br>8.6 Nm @ 4000 rpm<br>7.3 Nm @ 5000 rpm |
| Spinta Max. Mandrino / Spindle max. thrust     | 450 N  |
| Peso / Weight                                  | 4.5 Kg   |
| Lubrificazione a grasso / Grease lubricated    | KLÜBER ISOFLEX NBU 15  |

ACCESSORI / ACCESSORIES (optional)

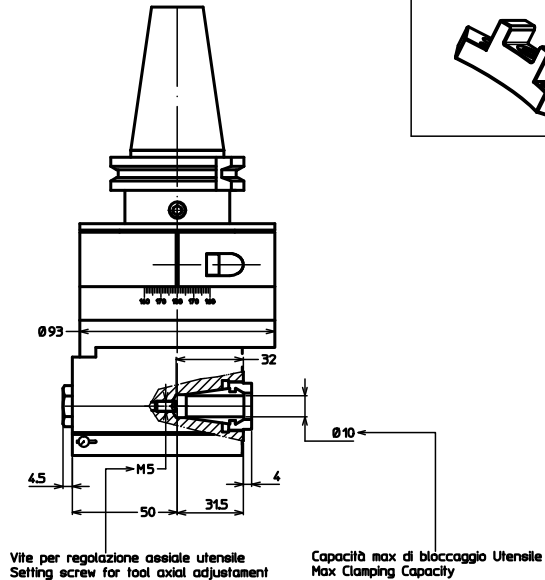
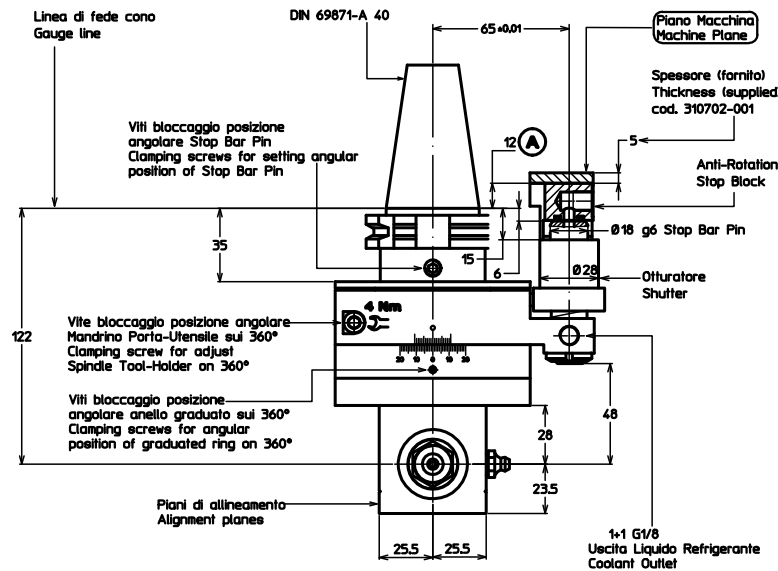
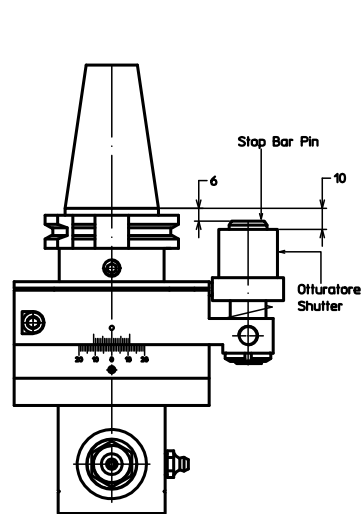
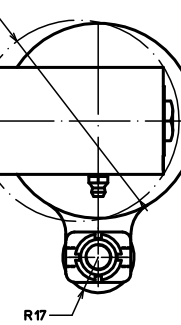
|   |            |
|---|------------|
| Pinza ER25 DIN 6499/B                               | 411225.100 |
| ER25 Collet DIN 6499/B                              |            |
| Pinza di maschiatura ET-1-25<br>(con compensazione) | 401225.200 |
| Tapping collet ET-1-25<br>(with compensation)       |            |
| Pinza di maschiatura ER25 con quadro                | 411225.200 |
| Tapping collet ER25 with square                     |            |



STOP BLOCK antirrotante standard codice 311201-025  
standard anti-rotation STOP BLOCK code 311201-025



Diametro minimo del foro  
in cui entra la testa  
Minimum bore diameter through  
which unfooted head can pass.



**Fuori macchina**  
**(caricata nel magazzino utensili)**  
**Outside machine**  
**(charged into tool magazine)**

**Testa angolare libera (In macchina)**  
**Angle head free (inside machine)**

### TESTA ANGOLARE A 90° tipo A16CN-SK40 90° ANGLE HEAD type A16CN-SK40

**SPECIFICHE TECNICHE / TECHNICAL FEATURES**

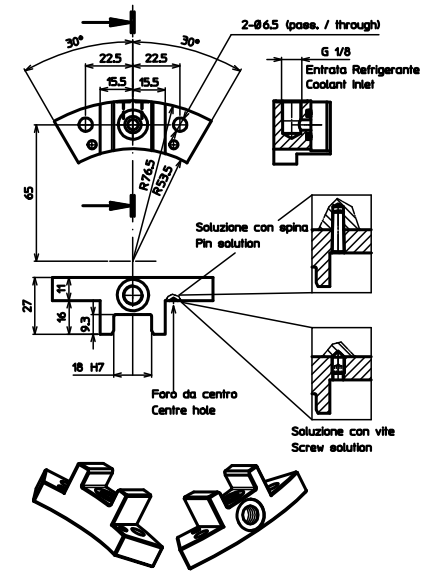
|  |  |
|--|--|
| Modello / Type                                 | A16CN-SK40   |
| Codice / Code                                  | 124928.100   |
| Mandrini per pinza / Spindle for collet        | ER 16  |
| Rotazione presa di forza / Main drive rotation | SX / LH  |
| Rotazione mandrino / Spindle rotation          | DX / RH  |
| Rapporto di trasmissione / Transmission ratio  | 1:1  |
| Velocità max / Max speed                       | 7000 rpm   |
| Coppia / Torque                                | 18 Nm @ 1000 rpm<br>13.2 Nm @ 2000 rpm<br>8.6 Nm @ 4000 rpm<br>5.6 Nm @ 7000 rpm |
| Spinta Max. Mandrino / Spindle max. thrust     | 450 N  |
| Peso / Weight                                  | 4 Kg   |
| Lubrificazione a grasso / Grease lubricated    | KLÜBER ISOFLEX NBU 15  |

**ACCESSORI / ACCESSORIES (optional)**

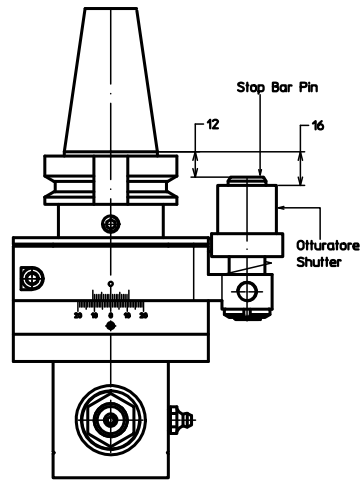
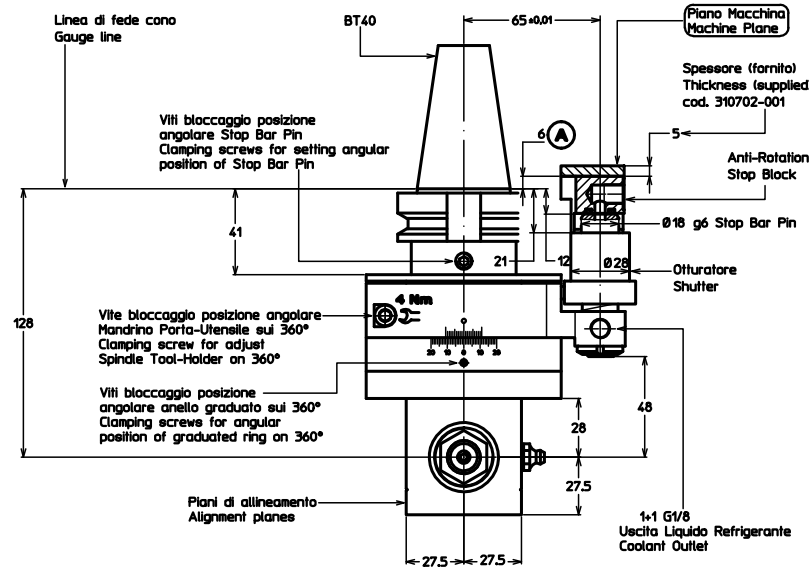
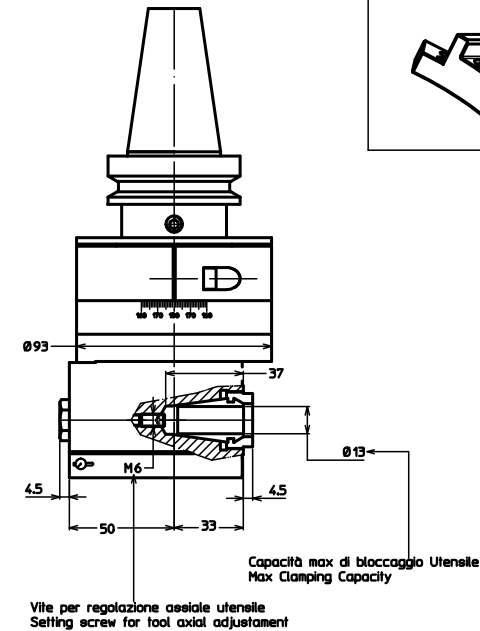
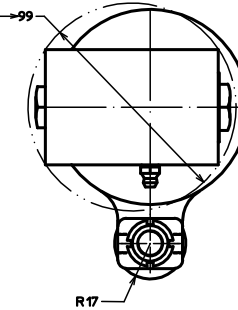
|   |            |
|---|------------|
| Pinza ER16 DIN 6499/B                               | 411216.100 |
| ER16 Collet DIN 6499/B                              |            |
| Pinza di maschiatura ET-1-16<br>(con compensazione) | 401216.200 |
| Tapping collet ET-1-16<br>(with compensation)       |            |
| Pinza di maschiatura ER16 con quadro                | 411216.200 |
| Tapping collet ER16 with square                     |            |



STOP BLOCK antirrotante standard codice 311201-025  
standard anti-rotation STOP BLOCK code 311201-025



Diametro minimo del foro  
in cui entra la testa senza utensile  
Minimum bore diameter through  
which untooled head can pass.



Fuori macchina  
(caricata nel magazzino utensili)  
Outside machine  
(charged into tool magazine)

Testa angolare libera (In macchina)  
Angle head free (inside machine)

### TESTA ANGOLARE A 90° tipo A20CN-BT40 90° ANGLE HEAD type A20CN-BT40

#### SPECIFICHE TECNICHE / TECHNICAL FEATURES

|  |                       |                                      |            |
|--|-----------------------|--------------------------------------|------------|
| Modello / Type                                 | A20CN-BT40            | Pinza ER20 DIN 6499/B                | 411220.100 |
| Codice / Code                                  | 124925.100            | ER20 Collet DIN 6499/B               |            |
| Mandrini per pinza / Spindle for collet        | ER 20                 |                                      |            |
| Rotazione presa di forza / Main drive rotation | SX / LH               | Pinza di maschiatura ET-1-20         | 401220.200 |
| Rotazione mandrino / Spindle rotation          | DX / RH               | (con compensazione)                  |            |
| Rapporto di trasmissione / Transmission ratio  | 1:1                   | Tapping collet ET-1-20               |            |
| Velocità max / Max speed                       | 6000 rpm              | (with compensation)                  |            |
| Coppia / Torque                                | 18 Nm @ 1000 rpm      | Pinza di maschiatura ER20 con quadro | 411220.200 |
|  | 13.2 Nm @ 2000 rpm    | Tapping collet ER20 with square      |            |
|  | 8.6 Nm @ 4000 rpm     |                                      |            |
|  | 6.4 Nm @ 6000 rpm     |                                      |            |
| Spinta Max. Mandrino / Spindle max. thrust     | 450 N                 |                                      |            |
| Peso / Weight                                  | 4.1 Kg                |                                      |            |
| Lubrificazione a grasso / Grease lubricated    | KLÜBER ISOFLEX NBU 15 |                                      |            |

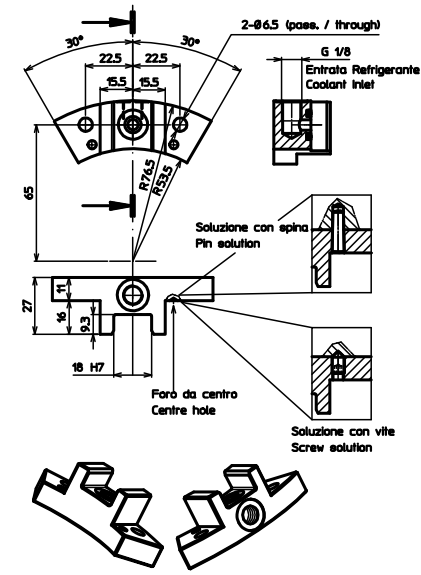
#### ACCESSORI / ACCESSORIES (optional)

|   |            |
|---|------------|
| Pinza ER20 DIN 6499/B                               | 411220.100 |
| ER20 Collet DIN 6499/B                              |            |
| Pinza di maschiatura ET-1-20<br>(con compensazione) | 401220.200 |
| Tapping collet ET-1-20<br>(with compensation)       |            |
| Pinza di maschiatura ER20 con quadro                | 411220.200 |
| Tapping collet ER20 with square                     |            |

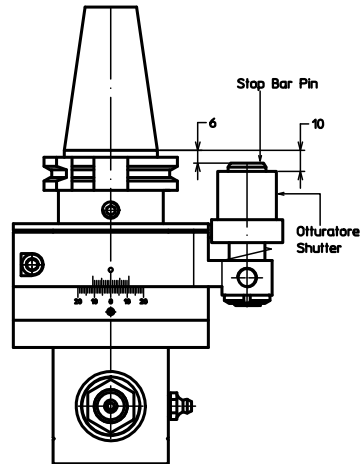
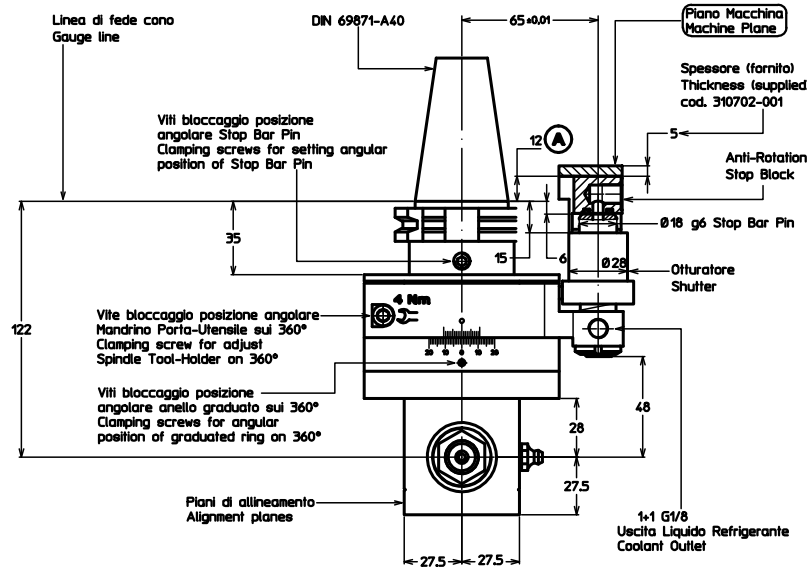
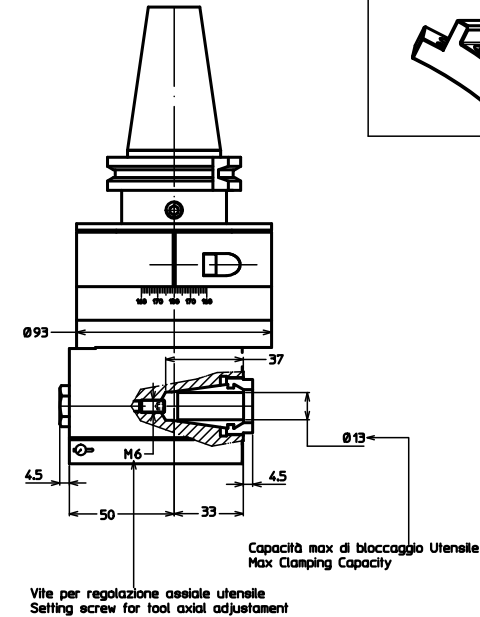
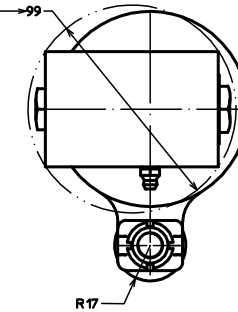
mpa

PIRELLA GÖTTSCHE LOWE

STOP BLOCK antirrotante standard codice 311201-025  
standard anti-rotation STOP BLOCK code 311201-025



Diametro minimo del foro  
in cui entra la testa senza utensile  
Minimum bore diameter through  
which untooled head can pass.



Fuori macchina  
(caricata nel magazzino utensili)  
Outside machine  
(charged into tool magazine)

Testa angolare libera (In macchina)  
Angle head free (inside machine)

### TESTA ANGOLARE A 90° tipo A20CN-SK40 90° ANGLE HEAD type A20CN-SK40

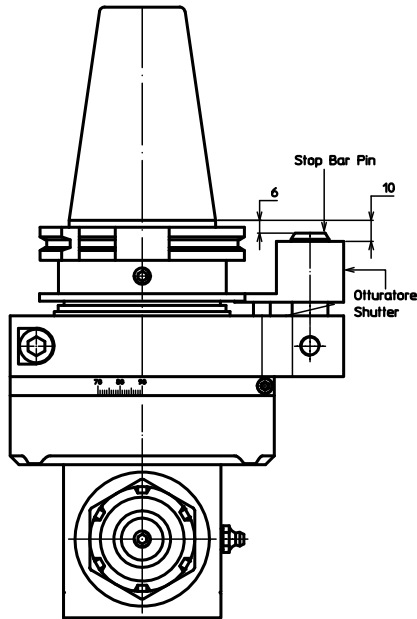
#### SPECIFICHE TECNICHE / TECHNICAL FEATURES

|  |                       |                                      |            |
|--|-----------------------|--------------------------------------|------------|
| Modello / Type                                 | A20CN-SK40            | Pinza ER20 DIN 6499/B                | 411220.100 |
| Codice / Code                                  | 124923.100            | ER20 Collet DIN 6499/B               |            |
| Mandrini per pinza / Spindle for collet        | ER 20                 |                                      |            |
| Rotazione presa di forza / Main drive rotation | SX / LH               | Pinza di maschiatura ET-1-20         | 401220.200 |
| Rotazione mandrino / Spindle rotation          | DX / RH               | (con compensazione)                  |            |
| Rapporto di trasmissione / Transmission ratio  | 1:1                   | Tapping collet ET-1-20               |            |
| Velocità max / Max speed                       | 6000 rpm              | (with compensation)                  |            |
| Coppia / Torque                                | 18 Nm @ 1000 rpm      |                                      |            |
|  | 13.2 Nm @ 2000 rpm    | Pinza di maschiatura ER20 con quadro | 411220.200 |
|  | 8.6 Nm @ 4000 rpm     | Tapping collet ER20 with square      |            |
|  | 6.4 Nm @ 6000 rpm     |                                      |            |
| Spinta Max. Mandrino / Spindle max. thrust     | 450 N                 |                                      |            |
| Peso / Weight                                  | 4.1 Kg                |                                      |            |
| Lubrificazione a grasso / Grease lubricated    | KLÜBER ISOFLEX NBU 15 |                                      |            |

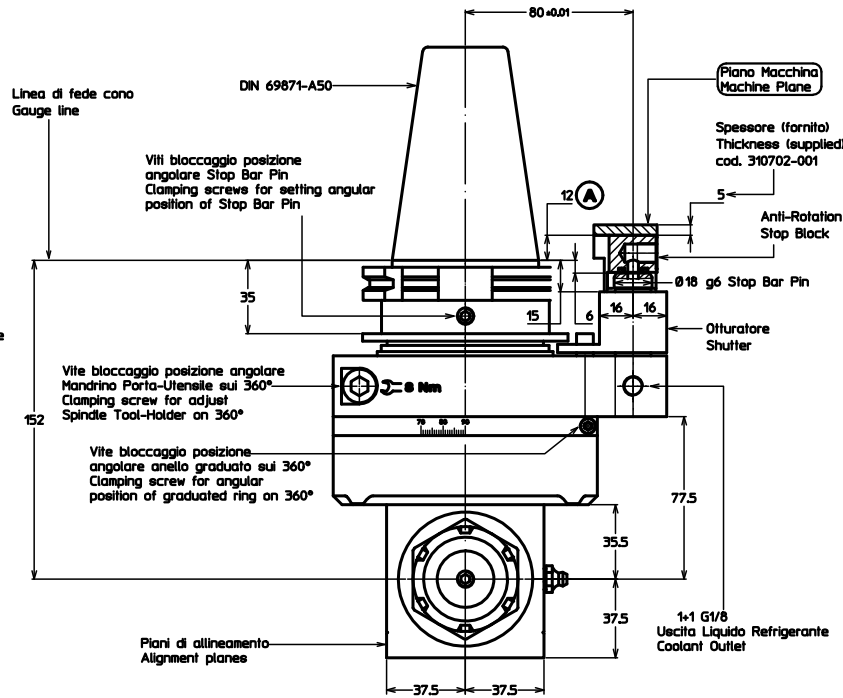
#### ACCESSORI / ACCESSORIES (optional)

|  |            |
|--|------------|
| Pinza ER20 DIN 6499/B                            | 411220.100 |
| ER20 Collet DIN 6499/B                           |            |
| Pinza di maschiatura ET-1-20 (con compensazione) | 401220.200 |
| Tapping collet ET-1-20 (with compensation)       |            |
| Pinza di maschiatura ER20 con quadro             | 411220.200 |
| Tapping collet ER20 with square                  |            |

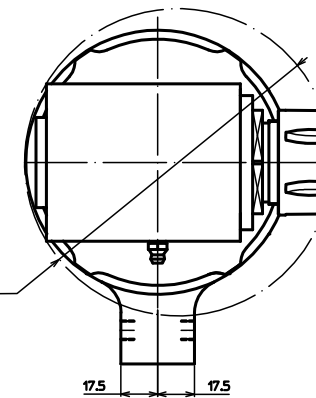




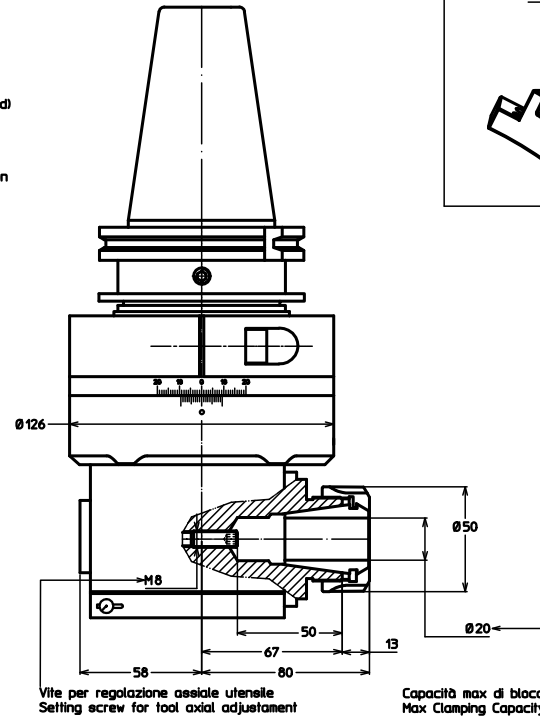
**Fuori macchina**  
**(caricata nel magazzino utensili)**  
**Outside machine**  
**(charged into tool magazine)**



**Testa angolare libera (in macchina)**  
**Angle head free (inside machine)**

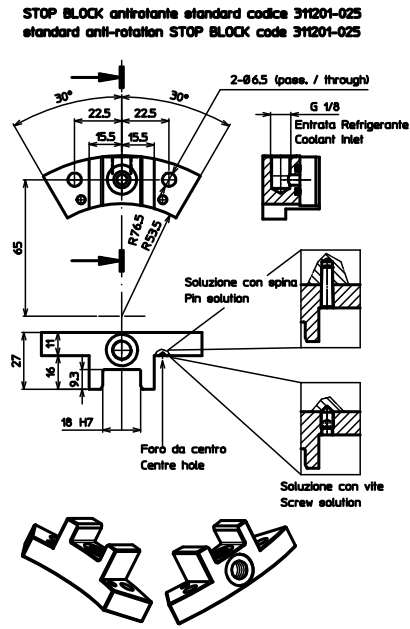


Diametro minimo del foro  
in cui entra la testa senza utensile  
Minimum bore diameter through  
which untool head can pass.



Vite per regolazione assiale utensile  
Setting screw for tool axial adjustment

Capacità max di bloccaggio Utensile  
Max Clamping Capacity



**STOP BLOCK antirrotante standard codice 31201-025**  
**standard anti-rotation STOP BLOCK code 31201-025**

**TESTA ANGOLARE A 90° tipo A32CN-SK50**  
**90° ANGLE HEAD type A32CN-SK50**

**SPECIFICHE TECNICHE / TECHNICAL FEATURES**

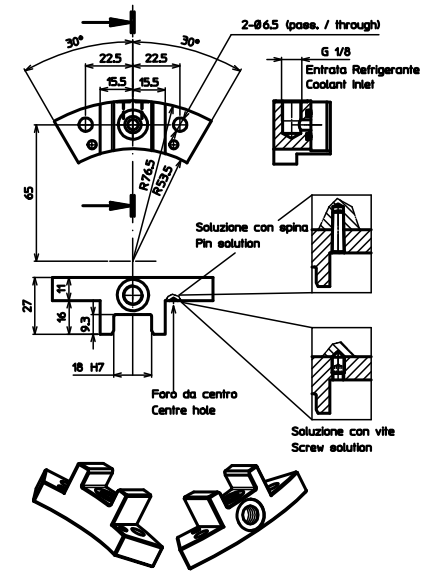
|  |  |
|--|--|
| Modello / Type                                 | A32CN-SK50   |
| Codice / Code                                  | 124917.100   |
| Mandri per pinza / Spindle for collet          | ER 32  |
| Rotazione presa di forza / Main drive rotation | SX / LH  |
| Rotazione mandrino / Spindle rotation          | DX / RH  |
| Rapporto di trasmissione / Transmission ratio  | 1:1  |
| Velocità max / Max speed                       | 4000 rpm   |
| Coppia / Torque                                | 33,8 Nm @ 1000 rpm<br>26 Nm @ 2000 rpm<br>14,7 Nm @ 4000 rpm |
| Spinta Max. Mandrino / Spindle max. thrust     | 1200 N   |
| Peso / Weight                                  | 11,2 Kg  |
| Lubrificazione a grasso / Grease lubricated    | KLÜBER ISOFLEX NBU 15  |

**ACCESSORI / ACCESSORIES (optional)**

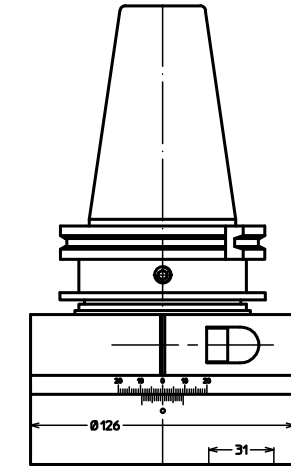
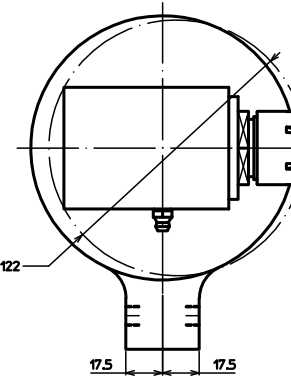
|  |            |
|--|------------|
| Pinza ER32 DIN 6499/B                            | 411232.100 |
| ER32 Collet DIN 6499/B                           |            |
| Pinza di maschiatura ET-1-32 (con compensazione) | 401232.200 |
| Tapping collet ET-1-32 (with compensation)       |            |
| Pinza di maschiatura ER32 con quadro             | 411232.200 |
| Tapping collet ER32 with square                  |            |



STOP BLOCK antirrotante standard codice 31201-025  
standard anti-rotation STOP BLOCK code 31201-025

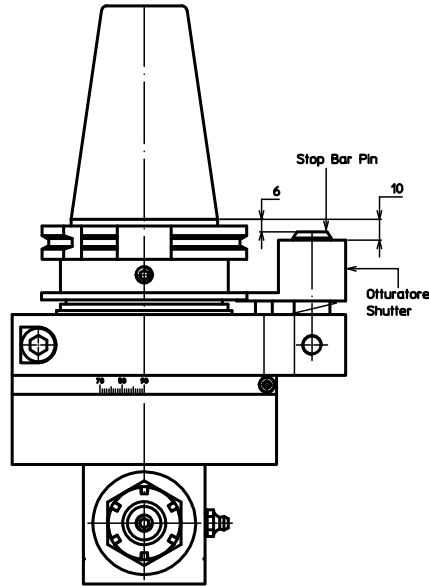


Diametro minimo del foro  
in cui entra la testa senza utensile  
Minimum bore diameter through  
which untooled head can pass.

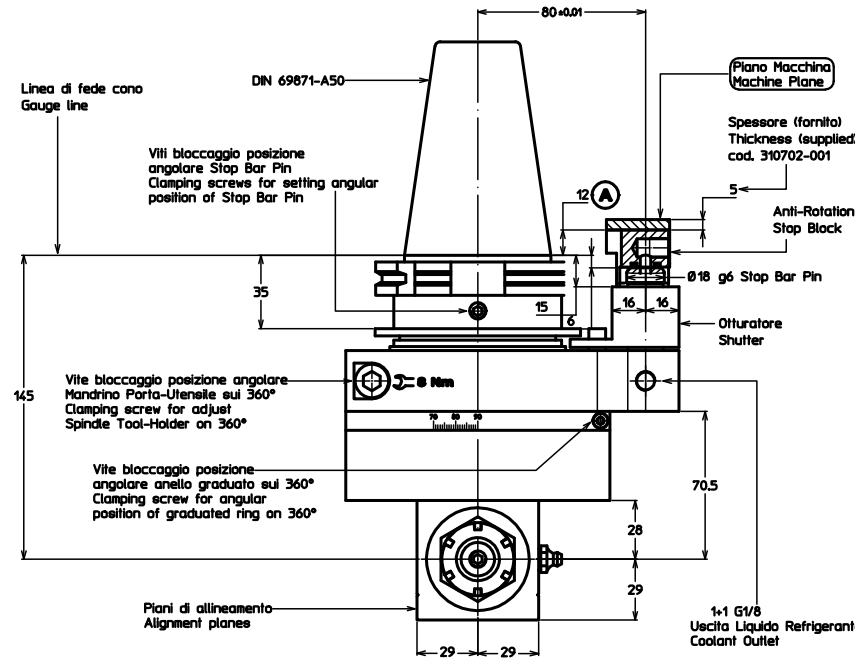


Vite per regolazione assiale utensile  
Setting screw for tool axial adjustment

Capacità max di bloccaggio Utensile  
Max Clamping Capacity



**Fuori macchina**  
**(caricata nel magazzino utensili)**  
**Outside machine**  
**(charged into tool magazine)**



**Testa angolare libera (in macchina)**  
**Angle head free (inside machine)**

1-1 G1/8  
Uscita Liquido Refrigerante  
Coolant Outlet

### TESTA ANGOLARE A 90° tipo A25CN-SK50 90° ANGLE HEAD type A25CN-SK50

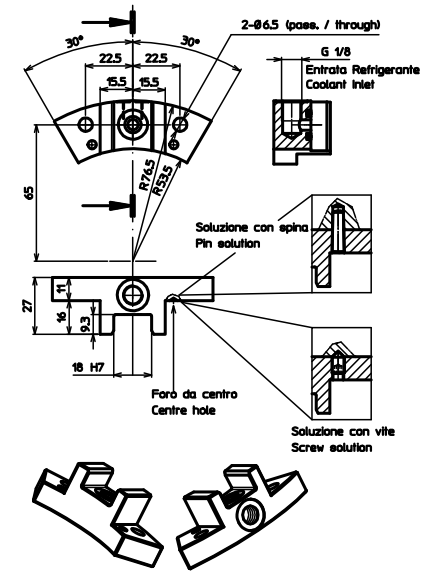
#### SPECIFICHE TECNICHE / TECHNICAL FEATURES

|  |  |
|--|--|
| Modello / Type                                 | A25CN-SK50   |
| Codice / Code                                  | 124916.100   |
| Mandrini per pinza / Spindle for collet        | ER 25  |
| Rotazione presa di forza / Main drive rotation | SX / LH  |
| Rotazione mandrino / Spindle rotation          | DX / RH  |
| Rapporto di trasmissione / Transmission ratio  | 1:1  |
| Velocità max / Max speed                       | 5000 rpm   |
| Coppia / Torque                                | 18 Nm @ 1000 rpm<br>13.2 Nm @ 2000 rpm<br>8.6 Nm @ 4000 rpm<br>7.3 Nm @ 5000 rpm |
| Spinta Max. Mandrino / Spindle max. thrust     | 1000 N   |
| Peso / Weight                                  | 9.2 Kg   |
| Lubrificazione a grasso / Grease lubricated    | KLÜBER ISOFLEX NBU 15  |

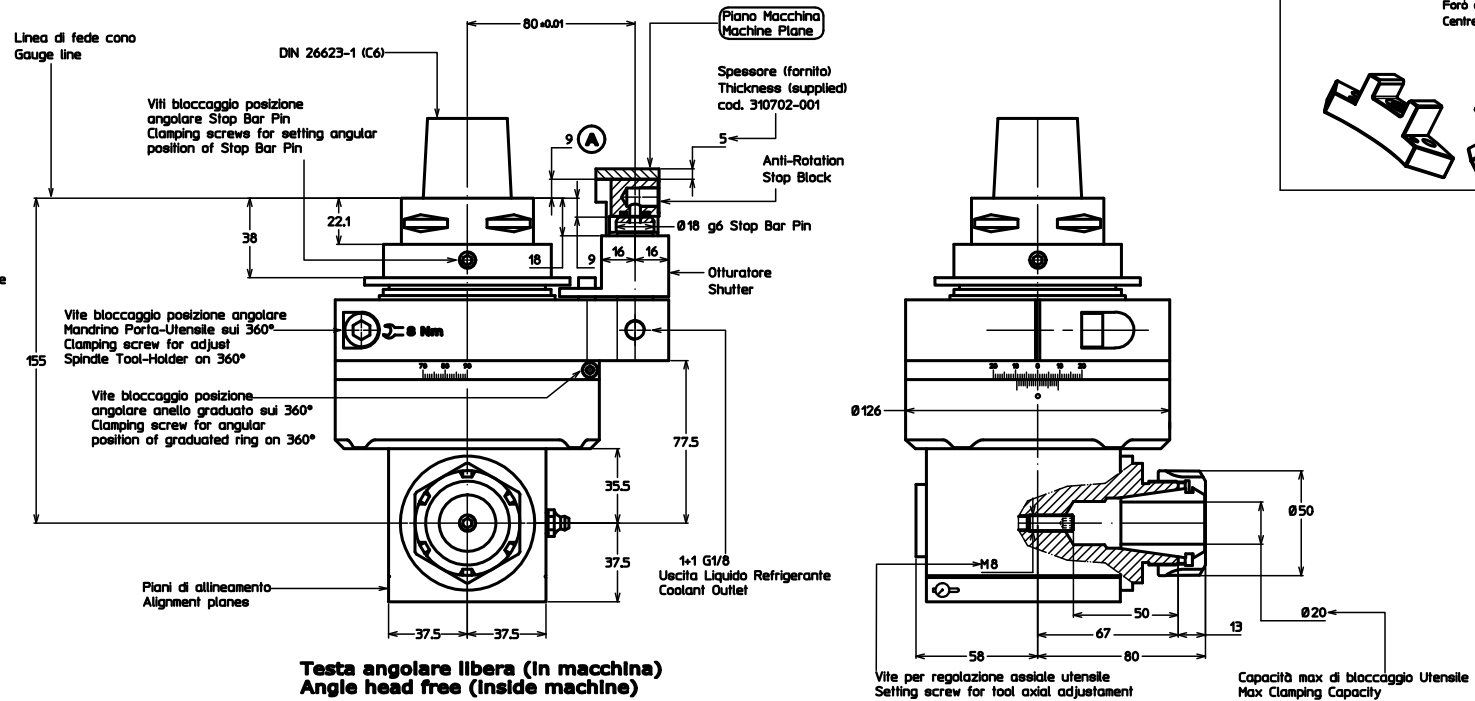
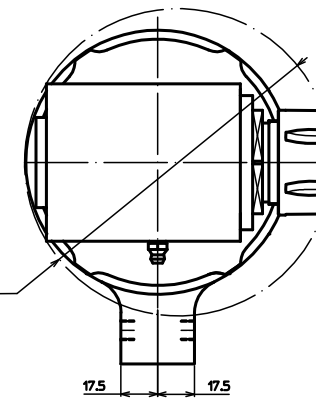
#### ACCESSORI / ACCESSORIES (optional)

|   |            |
|---|------------|
| Pinza ER25 DIN 6499/B                               | 411225.100 |
| ER25 Collet DIN 6499/B                              |            |
| Pinza di maschiatura ET-1-25<br>(con compensazione) | 401225.200 |
| Tapping collet ET-1-25<br>(with compensation)       |            |
| Pinza di maschiatura ER25 con quadro                | 411225.200 |
| Tapping collet ER25 with square                     |            |

STOP BLOCK antirrotante standard codice 31201-025  
standard anti-rotation STOP BLOCK code 31201-025



Diametro minimo del foro  
in cui entra la testa senza utensile  
Minimum bore diameter through  
which untooled head can pass.



**Fuori macchina**  
(caricata nel magazzino utensili)  
**Outside machine**  
(charged into tool magazine)

**Testa angolare libera (in macchina)**  
**Angle head free (inside machine)**

### TESTA ANGOLARE A 90° tipo A32CN-C6 90° ANGLE HEAD type A32CN-C6

**SPECIFICHE TECNICHE / TECHNICAL FEATURES**

|  |  |
|--|--|
| Modello / Type                                 | A32CN-C6   |
| Codice / Code                                  | 124998.100   |
| Mandrini per pinza / Spindles for collet       | ER 32  |
| Rotazione presa di forza / Main drive rotation | SX / LH  |
| Rotazione mandrino / Spindle rotation          | DX / RH  |
| Rapporto di trasmissione / Transmission ratio  | 1:1  |
| Velocità max / Max speed                       | 4000 rpm   |
| Coppia / Torque                                | 33.8 Nm @ 1000 rpm<br>26 Nm @ 2000 rpm<br>14.7 Nm @ 4000 rpm |
| Spinta Max. Mandrino / Spindle max. thrust     | 1200 N   |
| Peso / Weight                                  | 11.2 Kg  |
| Lubrificazione a grasso / Grease lubricated    | KLÜBER ISOFLEX NBU 15  |

**ACCESSORI / ACCESSORIES (optional)**

|  |            |
|--|------------|
| Pinza ER32 DIN 6499/B                            | 411232.100 |
| ER32 Collet DIN 6499/B                           |            |
| Pinza di maschiatura ET-1-32 (con compensazione) | 401232.200 |
| Tapping collet ET-1-32 (with compensation)       |            |
| Pinza di maschiatura ER32 con quadro             | 411232.200 |
| Tapping collet ER32 with square                  |            |