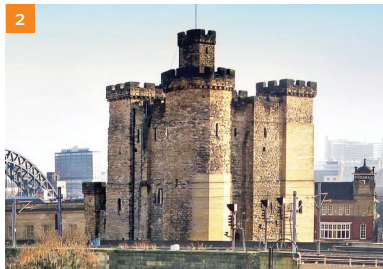




1



4



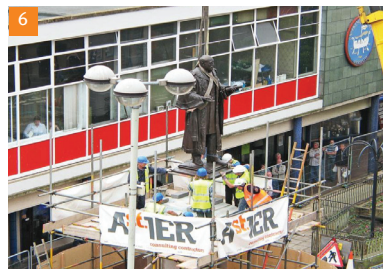
2



5



3



6



Building Conservation

We have a wealth of experience in managing and delivering specialist historic repair and building conservation projects which demand a unique focus and sympathetic attention to ensure our region's built heritage is maintained and conserved.

1 The Theatre Royal

The project focussed on the careful repair and conservation of the theatre's external façade, specifically the Portico and front elevation. Works comprised stone indentation, mortar based repairs, re-pointing, limited gentle cleaning and removal of bird guano. The external works formed part of a larger award winning package.

2 The Castle Keep

St Astier undertook three phases of work to the Castle Keep. The phases addressed the replacement of 160 structurally failing natural stone blocks along with large areas of historic lime re-pointing, repairs and the installation of drainage falls to the roof, and finally, deshaling and the reinstatement of architectural features designed to shed water away from the structure.

3 Spanish City Dome

Essential repair and cleaning works were carried out to this Grade II listed iconic coastal building as the Ferro-crete dome had suffered deterioration at the hands of the North Sea wind and rain. Existing coatings were removed from the concrete dome which was then repaired and protected using specialist concrete repair systems.

4 Dunstanburgh Castle

Works to this Grade I* listed building and scheduled ancient monument involved the removal of loose stone and mortar to anticipate its accidental fall. Structurally damaged stone was selectively replaced. Other elements included raking out mortar joints, filling and consolidating cavities and re-pointing. toric lime mortar.

5 Rockliffe Hall

St Astier were engaged to carry out the careful restoration of stonework and architectural features as part of a change of use scheme, turning the Grade II structure into a 5* hotel. The scheme also included the complete renewal of roof covering in systematic phases, including timber repairs, the application of breathable membranes and recovering with existing slate.

6 Statue of Sir Charles Palmer

An award winning building conservation scheme to remove, restore and relocate the statue of Sir Charles Mark Palmer to make way for the new Tyne Crossing. Stone repairs were undertaken to the base and pedestal whilst corrosion was gently removed from bronze statue before it was cleaned, repatinated and protected prior to the structure being rebuilt at its new location.