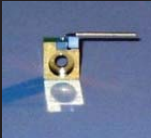












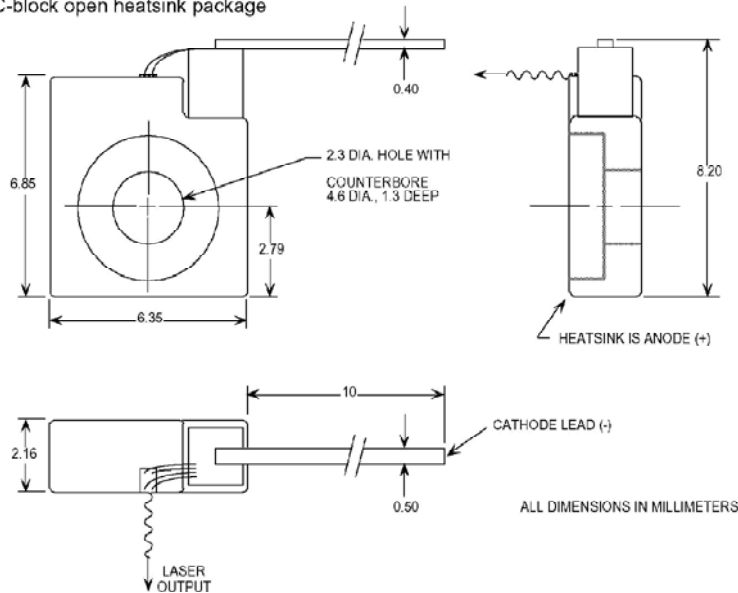
Packages

C-mount	
B-mount	
Q-mount	
TO-3 (with TEC)	
TO-3 (without TEC)	
9mm	
9mm SMA	
High Heat Load (HHL)	
HHL fiber Coupled	
Butterfly Fiber Coupled	
Laser Bar Package	

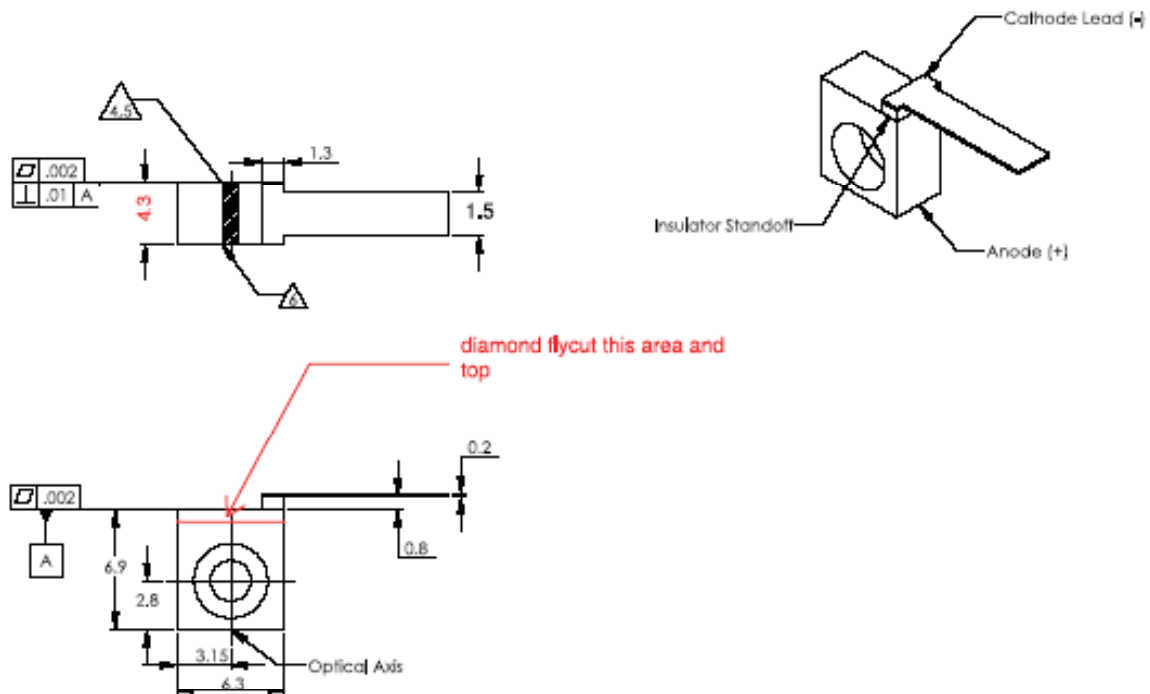
LDX Optronics Inc.

C-mount Package

C-block open heatsink package

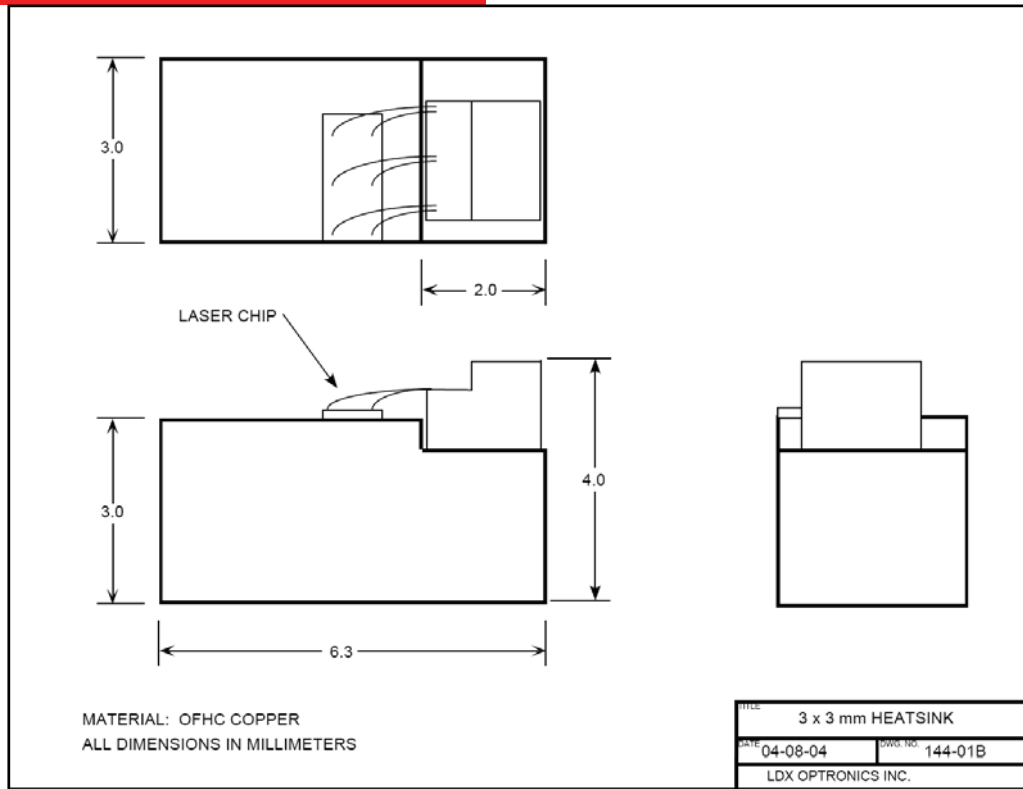


Tall C-mount Package

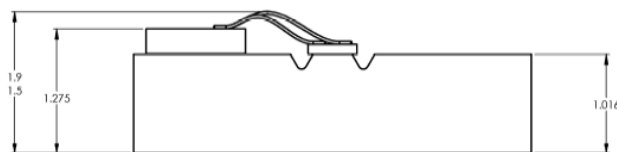
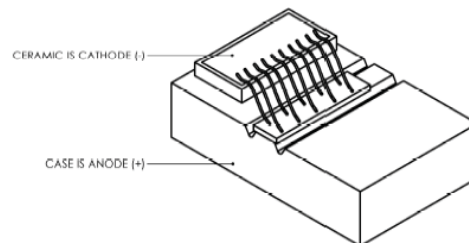
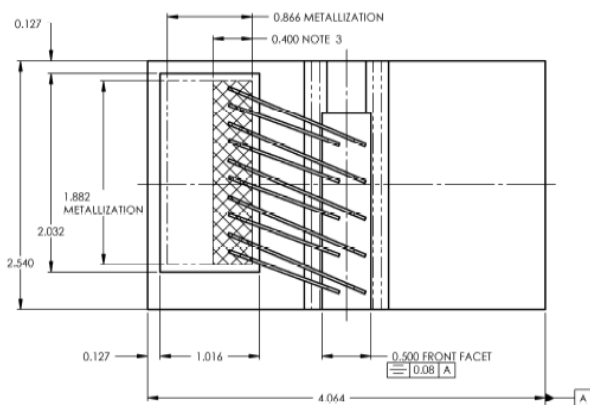


LDX Optronics Inc.

B-mount Package

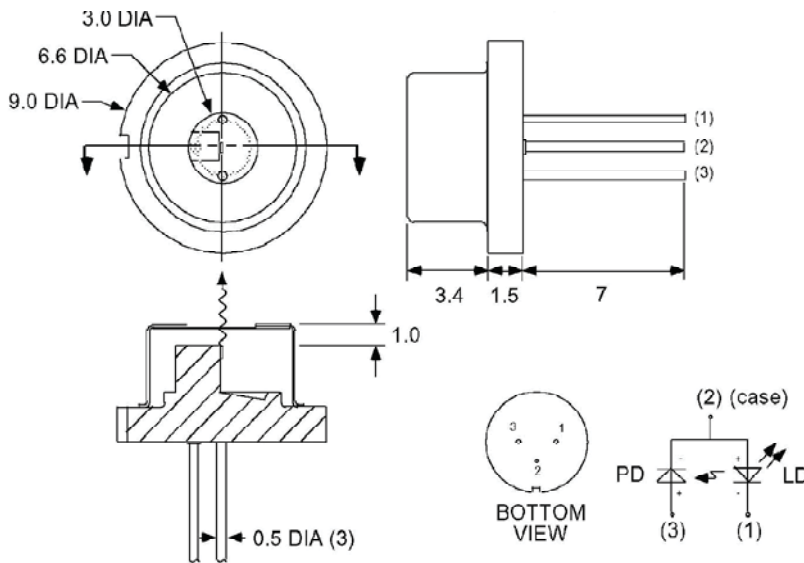


Q-mount Package



LDX Optronics Inc.

9mm Package



9mm Package Fiber Coupled with SMA

Technical drawing of a 9mm package fiber coupled with SMA showing side and top views with dimensions and a list of minimum fiber sizes.

- Side View: Thread for SMA, dimensions 0.596, 0.537, 0.193, 0.281, 0.059.
- Top View: Dimensions 0.125, 0.354.

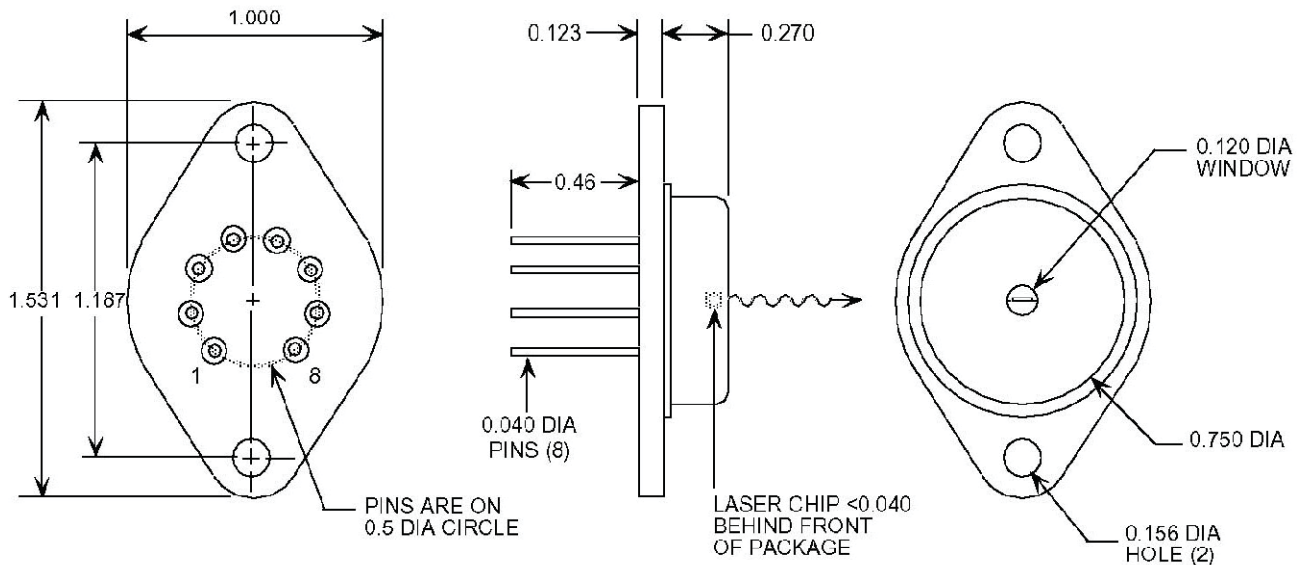
Minimum fiber size for this package is dependent on the emitter size of the laser diode. Minimum fiber sizes are:

- 50um emitter 200um fiber
- 100um emitter 400um fiber
- 150um emitter 400um fiber
- 200um emitter 400um fiber
- 300um emitter 600um fiber

TO-3 Package (With TEC)

TO-3 WINDOW PACKAGE, W/ TEC

ALL DIMENSIONS IN INCHES
TOLERANCE ± 0.004 UNLESS NOTED

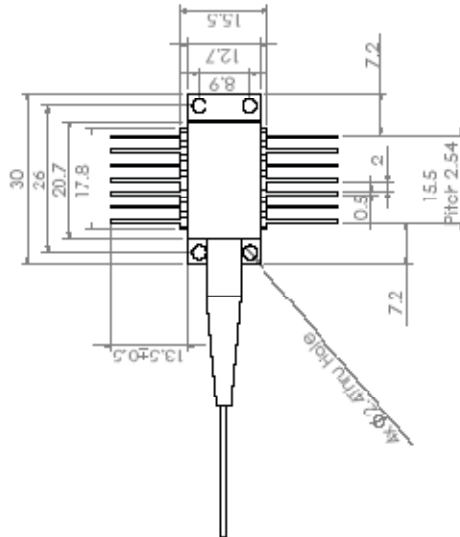
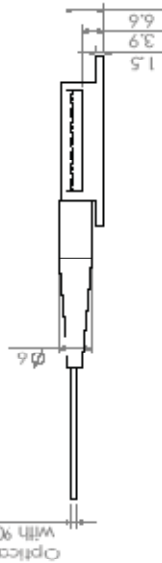
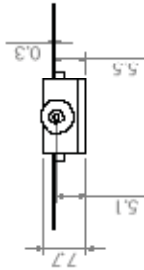
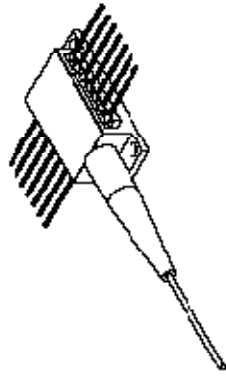


PIN 1: TEC (+)
PIN 2: THERMISTOR
PIN 3: THERMISTOR
PIN 4: LASER CATHODE (-)
PIN 5: LASER ANODE (+)
PIN 6: P.D. ANODE
PIN 7: P.D. CATHODE
PIN 8: TEC (-)

- THERMOELECTRIC COOLER RATED 6.2 VOLT, 1.8 AMP MAXIMUM.
- THERMISTOR CONSTANTS: $A=1.129 \text{ E-}3$, $B=2.341 \text{ E-}4$, $C=0.878 \text{ E-}7$
- THERMISTOR RESISTANCE:
 - 10.0 K @ 25 °C
 - 12.5 K @ 20 °C
 - 15.7 K @ 15 °C
 - 19.9 K @ 10 °C
 - 25.4 K @ 5 °C

TO-3 Available without TEC

Butterfly Uncooled Fiber Coupled Package



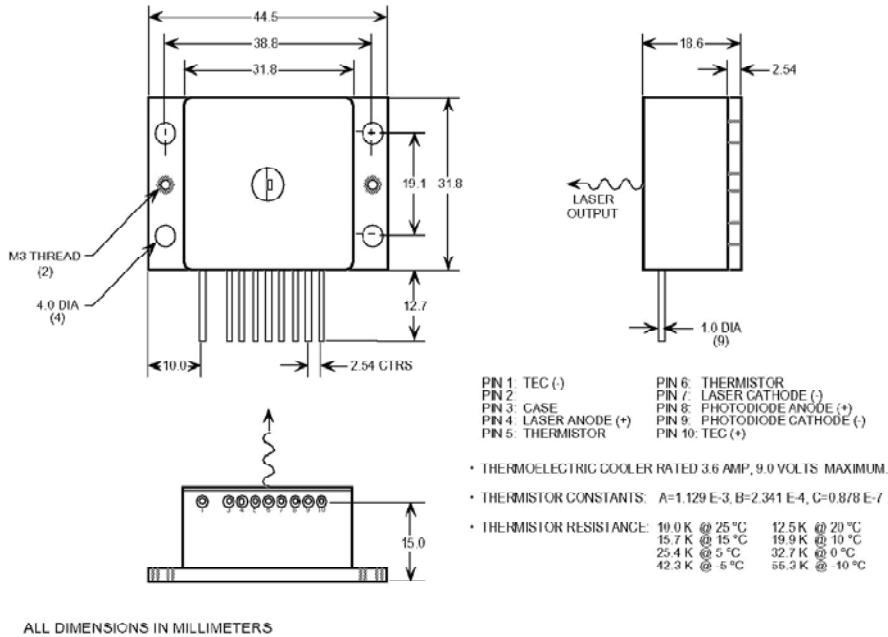
Note:

1. Fiber cable has 900um buffer terminated with connector TBD, length TBD.
2. Finish: Plate Ni(1-2um)/Au(0.15-0.5um)

UNLESS OTHERWISE SPECIFIED:		NAME	DATE	LDX Optronics, Inc.	
UNIT: MM	TOLERANCES: ISO 2	P. Zhou	1/7/2010	SIZE	DWG. NO.
FRACTIONAL: 1/16	ANGULAR: MACH: 1/16			A	V007-D207-1
TWO PLACE DECIMAL: ±	THREE PLACE DECIMAL: ±			SCALE: 1:1	WEIGHT:
INTERPRET GEOMETRIC TOLERANCE FEES:					
MATERIAL:					
FINISH:					
PROPRIETARY AND CONFIDENTIAL THE INFORMATION CONTAINED IN THIS DRAWING IS THE SOLE PROPERTY OF LDX Optronics, Inc. ANY REPRODUCTION IN PART OR AS A WHOLE WITHOUT THE WRITTEN PERMISSION OF LDX Optronics, Inc. IS PROHIBITED.		COMMENTS:		REV	x00
		TITLE: BF Fiber Optic Module Uncooled 14 Pin		SHEET 1 OF 1	

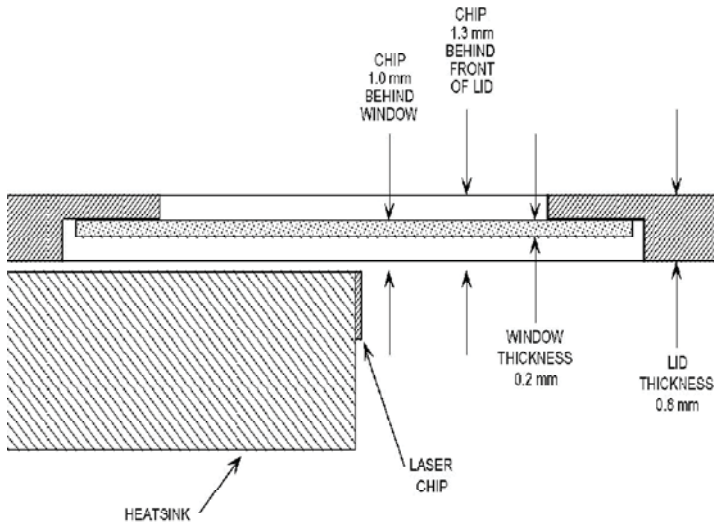
LDX Optronics Inc.

High Heat Load (HHL) Package



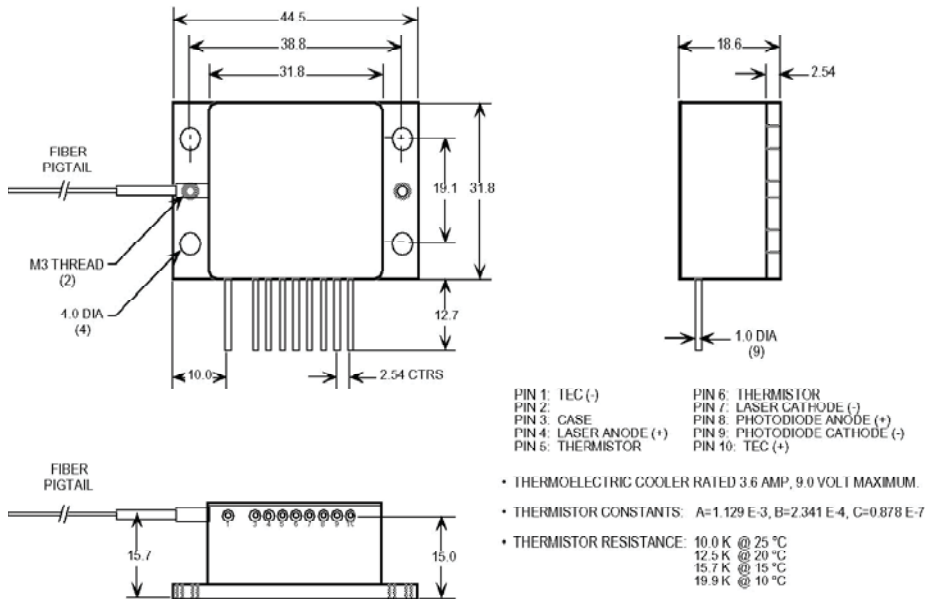
HHL Package Window Detail

HHL PACKAGE-WINDOW SECTION DETAIL



LDX Optronics Inc.

HHL Package Fiber Coupled



ALL DIMENSIONS IN MILLIMETERS

CS Bar Package

